

LumiPar 12Arc

12x9W RGBW compact IP65 LED PAR



LumiPar 12Arc is a bright and flexible IP LED PAR made for architectural accent light for outdoor events. The housing in die-cast aluminium is designed to feature both as a robust workhorse and being totally fan-free allows for total silence during operation.

MAIN FEATURES

- IP65 die-cast aluminium housing
- 12x9W RGBW LED PAR
- Fan-free and flicker-free
- Filter frame included

VERSIONS

Code	Beam angle
LUMIPAR12ARC20D	20°
LUMIPAR12ARC45D	45°

TECHNICAL SPECIFICATION

LIGHT SOURCE

- Source: 12x9 W RGBW LEDs
- Luminous flux: (20°) 5'364 lm - (45°) 5'231 lm
- Lux: (20°) 1'401 lx @5 m full
- Lux: (45°) 484 lx @5 m full
- Source life expectancy: > 50.000 h

OPTICS

- Beam angle: available in 20° or 45°
- Field angle: 36° or 60°

COLOUR SYSTEM

- Colour mixing: RGBW / FC
- White presets: 3.000 K ~ 10.000 K
- Colour wheel: virtual colour wheel with macros
- Macros: built-in white presets

DYNAMIC EFFECTS

- Static mode: selection of static colour
- Manual mode: manual adjustment of colour
- Auto mode: built-in programs with execution speed adjustment

BODY

- Body: sturdy die-cast aluminium body
- Body colour: RAL 9010
- Other: display cover

CONTROL

- Protocols: DMX512
- DMX channels: 4 / 6 / 11 channel
- Display: black OLED touch display
- Firmware upgrade: yes, via USB - DMX interface (UPBOXPRO/UPBOX1) not included
- Master/Slave: for synchronised operation of more units linked in a chain

ELECTRONICS

- Dimmer: linear 0 ~ 100% electronic dimmer
- Dimmer curves: 4 selectable dimming modes available
- Strobe / shutter: 0 - 30 Hz, electronic
- Operating temperature: -20° ~ +45°
- LED Control: flicker free operation
- Selectable PWM: 600 ~ 25.000 Hz

ELECTRICAL

- Mains power supply: 100-240V - 50/60Hz
- Max power consumption: 115 W
- Max power consumption (at 120V): 115 W
- Output (at 230V): 33 units on a single power line
- Output (at 120V): 18 units on a single power line

PHYSICAL

- IP rating: 65
- IK rating: 07
- Cooling: passive cooling and fan-free
- Suspension and fixing: double hanging bracket suitable for safe hanging and for floor positioning
- Signal connection: moulded IP signal IN/OUT connectors
- Power connection: moulded IP power IN/OUT connectors
- Dimensions (WxHxD): 305x326x177 mm
- Weight: 6,2 kg

CERTIFICATIONS / APPROVALS

- Certifications / Approvals: CE, RCM

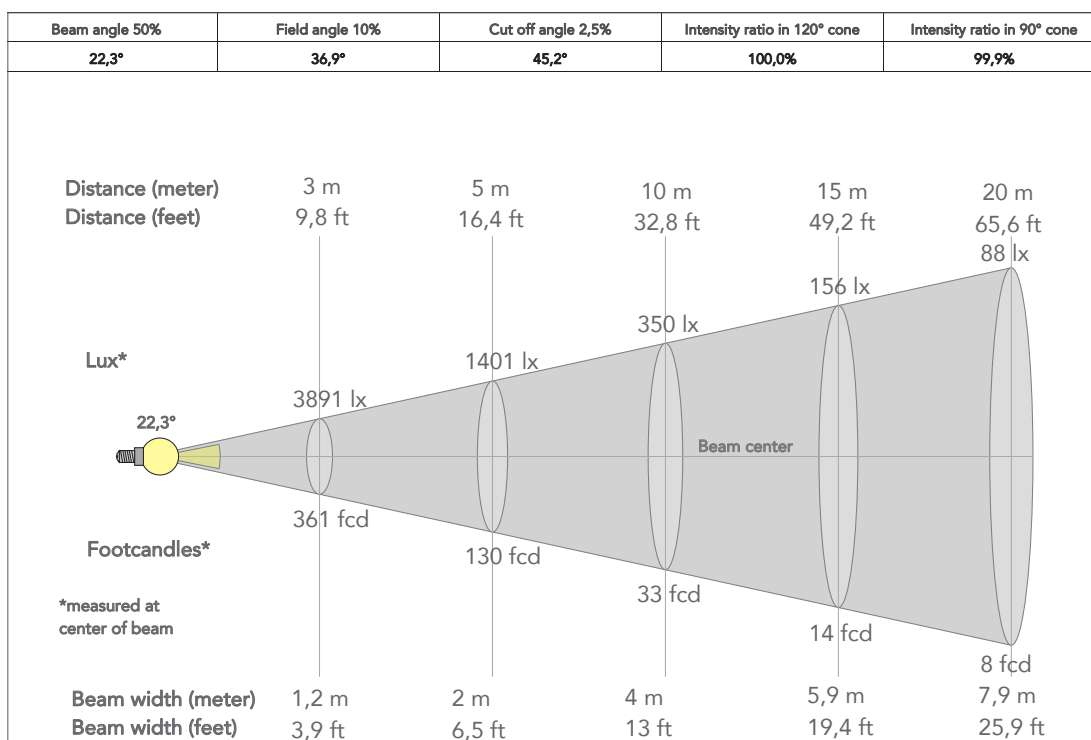
ACCESSORIES & RELATED PRODUCTS

▪ CRMXBOXIP67	IP67 CRMX TX / RX box
▪ ARCLUMIL15/25/45D45	Optic lens 15°, 25°, 45°, D.45mm
▪ LUMIPAR12IPBD	Barn door 4 directional flaps to adjust the light beam, f. frame not included
▪ C6002B	Slim aluminum clamp, 200kg loading, 48-51mm tubes, M10 bolt, Black
▪ AWEXAC203/05/10/20	Extension IP67 power cable, IPpowercon-F -> IPpowercon-M, 3/5/10/20m
▪ AWEXDC2L0305/10/20	Extension IP67 signal cable, IPdataCON-F -> IPdataCON-M, 3/5/10/20m
▪ AWEXDC1221ADP	Signal adapter kit from AWEXDC1 series to AWEXDC2 series and vice versa

▪ AWEXAC12ADP	Power adapter from AWEXAC1 cable series to AWEXAC2 cable series
▪ RSR0630B	Steel security cable for hanging bodies, inox steel shackle, L=60 cm, black
▪ 9333FXWL03	Ass. 3x2.5mm TH07 cable, SHUKO plug, SETSAC3FX socket, L.3m
▪ 9313FXWL03	Ass. 3x2.5mm TH07 cable, 16A 3p 230V CEE plug, SETSAC3FX socket, L.3 m
▪ 938225L03	3x2.5mm TH07 Cable, 16A SETSAC3MX, 16A SETSAC3FX, L.3m
▪ INF53415L03	Dmx cable HC5340. SETMC5MXXB XLR 5p->SETMC5FXXB XLR (f) 5p L.3m
▪ UPBOX1UP5	Firmware uploader kit, USB IN, 5p XLR DMX OUT, DMX OUT
▪ UPBOXPRO	Firmware uploader kit, USB IN, 5-pin XLR DMX OUT connector

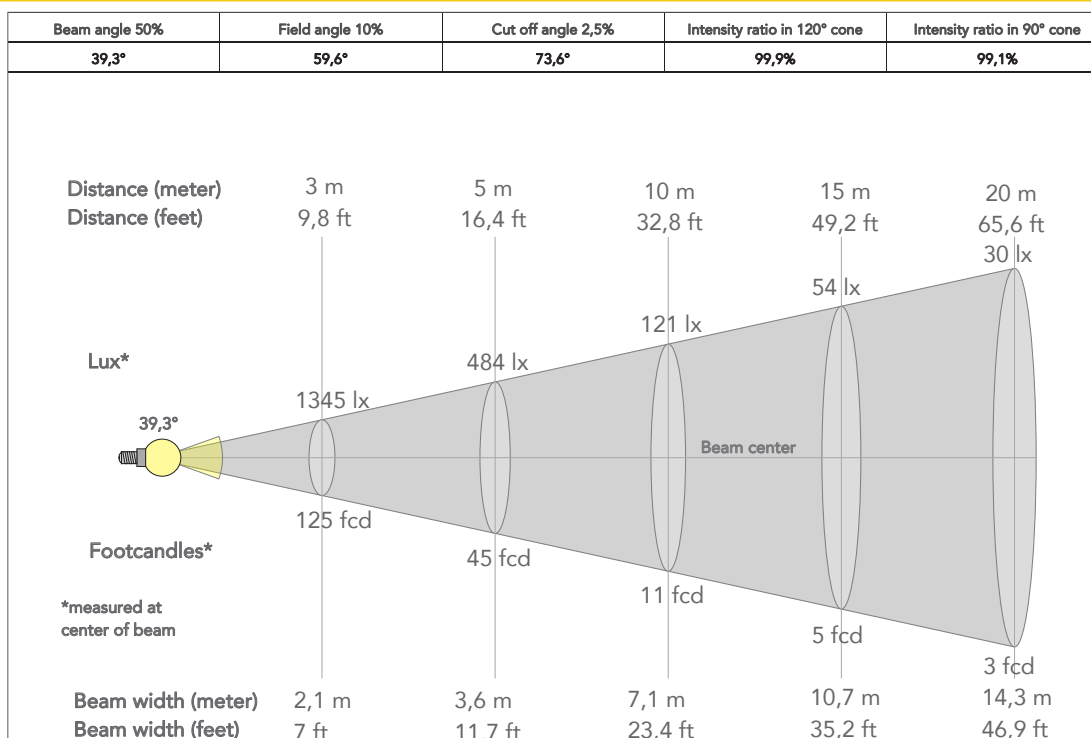
PRESET FULL ON

Beam angle 50%: 20°

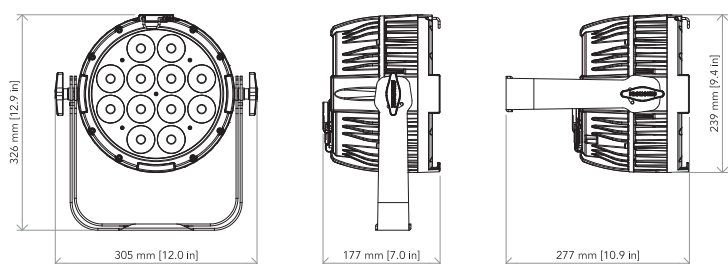


PRESET FULL ON

Beam angle 50%: 26,2°



TECHICAL DRAWINGS



CERTIFICATIONS / APPROVALS

