

# SigmaPix 39TC1X1WF

Four sides 45° cut outdoor rental 3,9 mm LED screen, 50x50cm tile with white LEDs

ORDER CODE: **SIGMAX39TC1X1WF**



**SigmaPix 39T** is a rental LED screen for outdoor use with a 3,9 mm pixel pitch, designed to meet requirements for touring, events and install applications.

This series is available in both 50x50cm and 50x100cm tiles, mechanically compatible in order to assemble a large surface of screen in a shorter time.

The mechanical design of the tiles has been conceived to allow fast single person installation with automatic lock design and extra safety & handling features such as flip corner shield and bottom protection.

Panel maintenance has been furtherly enhanced allowing quick replacement of LED modules and the PSU unit.

**SigmaPix 39T** tiles have on board curve mechanics allowing both concave and convex precise installation of  $+10^\circ / -10^\circ$  each tile and the weight has been reduced down to 8,6 kg (50x50) / 14,6 kg (50x100) per panels (34,4 / 29,2 kg per sqm)

**SigmaPix 39T** is truly creative and it is enriched by the special C tiles, a special  $90^\circ$  cutted edge panel on every side allowing to create  $90^\circ$  seamless corner on every edge.

The on-board electronics include the latest generation of Novastar A8s receiver card and refresh rate up to 3.840 Hz.

## MAIN FEATURES

- Single person installation, auto lock design, scratch protection and flip corner shield
- Fast LED Module and PSU replacement
- Built in curve mechanics for  $+10^\circ / -10^\circ$  concave & convex
- Refresh rate of 3.840 Hz

## TECHNICAL SPECIFICATION

### VIDEO

- Driver chip type: MBI 5253
- LED source: Nationstar SMD1921 black frame and white face
- Pixel pitch: 3,9 mm
- Panel resolution: 128x128 pixels
- Module resolution: 64x64 pixels
- Luminous flux: 4.500 nit
- Contrast: 3.000:1
- Grayscale: 14 bit
- Refresh rate  $\geq$ : 3.840 Hz
- Drive Mode: 1/16 scan, constan current
- Vertical viewing angle:  $120^\circ$
- Horizontal viewing angle:  $140^\circ$
- LED density: 65.536 LED/sqm
- Dead Pixel Ratio:  $<0.002$
- LED avg life span: 100.000

### ELECTRICAL

- Power input/output: IPKON Seetronic IN/OUT
- Power supply: AC 110/230 V 50/60 Hz
- Max power consumption (panel): 170 W
- Avg power consumption (panel): 50 W
- Max power consumption (sqm): 680 W
- Avg power consumption (sqm): 200 W
- Standby power consumption (pannello): 50 W
- Max rated current/panel: AC 220V / 0,77 A
- Working temperature:  $-20^\circ\text{C} / +50^\circ\text{C}$
- Working humidity: 10~90 RH %

### CONTROL

- Receiving card type: A8S-N
- Other controllers type: mapping, firmware copy, RCFGX restore, calibration restore, rotation supported, calibration chip on LDM (auto calibration)
- Control protocol: Novastar
- Signal input: waterproof Seetronic RJ45
- Signal output: waterproof Seetronic RJ45

### MECHANICS

- Other specifics: curve configurations (mechanics on board), bottom protection, auto-lock mechanics
- Magnetic LED modules: not available
- Module size (WxH): 250x250 mm
- Panel size (WxHxD): 500x500x83 mm
- Vertical hanging system: built-in aliscap clamp support
- Cooling: natural cooling of the peculiar chassis and to absence of fans
- Connection: seamless locking system
- Curvability: convex and concave  $-10^\circ / +10^\circ$
- Body: die-cast aluminium housing
- Color: black
- IP rating: IP65 (front and rear)
- Panel weight: 8,6 kg
- Weight per square meter: 34,4 kg
- Hanging Panel Quantity  $\leq$ : 20 for hanging and 12 for grounding
- Compliant Standard: CE, UKCA, cURus

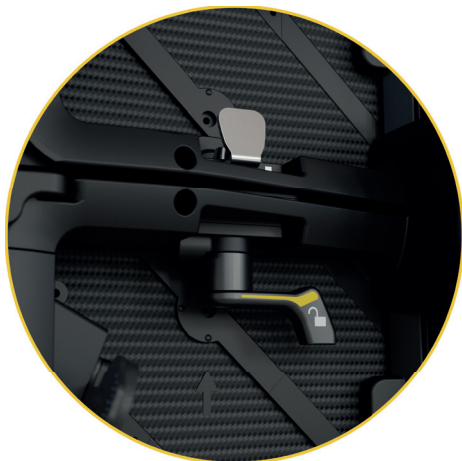
Indoor White LEDs Outdoor Black LEDs



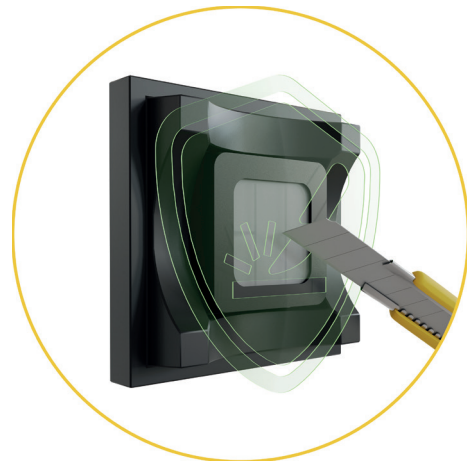
Single-Person Installation



Automatic Lock Design



Scratch Protection of the Lamp Face



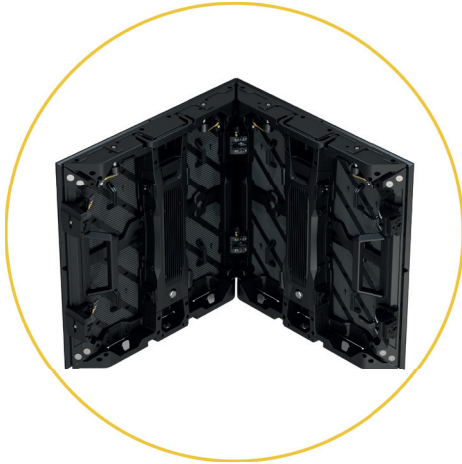
Flip Corners Shield and Bottom Protection



On Board Curve Mechanics +/- 10°



Special C 90° Corner



Special S +/- 40° Flexible Tiles



Fast and Tool Free Replacement of PSU and LED Module



Refresh Rate of 3.840 Hz



Lightweight: Approx 23Kg/Sqm



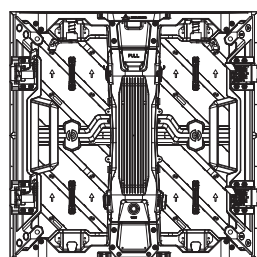
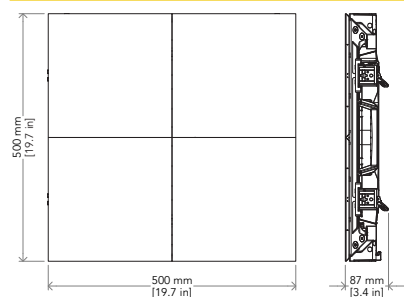
Novastar A8S Receiver Card



## ACCESSORIES & RELATED PRODUCTS

	SXFCM8039C45	Flightcase 8 in1 for SIGMAX39TC1X1		KSXGHR	Back plate for SIGMAX and KAPPAX series LED wall for ground system fixing
	KSXHGB01C45LR	Double side 45° cut fly bar / ground bar for SIGMAX26BC1X1BF		OXACL01/10	Power cable for OMEGAX and DELTAX LED display series L.1/10 m
	KSXCJB	Ground system back horizontal support for SIGMAX and KAPPAX series LED wall		SXDC01/10	Data cable for SIGMAX LED display series assembled with RJ45
	KSXBS21	2in1 back support for SIGMAX and KAPPAX series LED wall for ground system fixing		SIGMAXCMM	Optional male mechanics for SIGMAXC cabinets for corner / cube configurations
	KSXBS31	3in1 back support for SIGMAX and KAPPAX series LED wall for ground system fixing		SIGMAXCFM	Optional female mechanics for SIGMAXC cabinets for corner / cube configurations
	KSXBSC	Back plate for SIGMAX and KAPPAX series LED wall for ground system fixing			

## TECHNICAL DRAWINGS



Visit our website  
for specifications and  
tech documentations

