

SigmaPix 26BC1X1BF

Four sides 45° cut indoor rental 2,6 mm LED screen, 50x50cm tile with full black LEDs

ORDER CODE: **SIGMAX26BC1X1BF**



SigmaPix 26B is a rental LED screen for indoor use with a 2,6 mm pixel pitch, designed to meet requirements for corporate, studio and install applications.

The mechanical design of the tiles has been conceived to allow fast single person installation with automatic lock design and extra safety & handling features such as flip corner shield and bottom protection.

Panel maintenance has been furtherly enhanced allowing quick replacement of LED modules and the PSU unit.

SigmaPix 26B tiles have on board curve mechanics allowing both concave and convex precise installation of $+10^\circ$ / -10° each tile and the weight has been reduced down to 8 kg per panels (32 kg per sqm).

SigmaPix 26B is truly creative and it is enriched by the special S and C tiles to achieve unprecedented design. The S tile is a flexible panel, that it is designed with a flex PCB allowing to reach a curve angle of $+40^\circ$ and -40° within one single cabinet. The C Tile is a special 90° cutted edge panel on every side allowing to create 90° seamless corner on every edge.

The on-board electronics include the latest generation of Novastar A8s receiver card and refresh rate up to 3.840 Hz.

MAIN FEATURES

- Single person installation, auto lock design, scratch protection and flip corner shield
- Fast LED Module and PSU replacement
- Built in curve mechanics for $+10^\circ$ / -10° concave & convex
- Special S ($\pm 40^\circ$ flex tiles) and C (90° corner) cabinets for unprecedented design
- Refresh rate of 3.840 Hz

TECHNICAL SPECIFICATION

VIDEO

- Driver chip type: MBI 5253
- LED source: Nationstar SMD 1515 full black
- Pixel pitch: 2,6 mm
- Panel resolution: 192x192 pixels
- Module resolution: 96x96 pixels
- Luminous flux: 1000 nit
- Contrast: 4.000:1
- Grayscale: 14 bit
- Refresh rate \geq : 3.840 Hz
- Drive Mode: 1/24 scan, constan current
- Vertical viewing angle: 160°
- Horizontal viewing angle: 160°
- LED density: 147.456 LED/sqm
- Dead Pixel Ratio: <0.002
- LED avg life span: 100.000

ELECTRICAL

- Power input/output: IPKON Seetronic IN/OUT
- Power supply: AC 110/230 V 50/60 Hz
- Max power consumption (panel): 120 W
- Avg power consumption (panel): 35 W
- Max power consumption (sqm): 480 W
- Avg power consumption (sqm): 140 W
- Standby power consumption (pannello): 35 W
- Max rated current/panel: AC220V / 0.55A
- Working temperature: -10°C / $+45^\circ\text{C}$
- Working humidity: 10~80 RH %

CONTROL

- Receiving card type: A8S-N
- Other controllers type: mapping, firmware copy, RCFGX restore, calibration restore, rotation supported, calibration chip on LDM (auto calibration)
- Control protocol: Novastar
- Signal input: waterproof Seetronic RJ45
- Signal output: waterproof Seetronic RJ45

MECHANICS

- Other specifics: curve configurations (mechanics on board), bottom protection, auto-lock mechanics
- Magnetic LED modules: available
- Module size (WxH): 250x250 mm
- Panel size (WxHxD): 500x500x83 mm
- Vertical hanging system: built-in aliscap clamp support
- Cooling: natural cooling of the peculiar chassis and to absence of fans
- Connection: seamless locking system
- Curvability: convex and concave -10° / $+10^\circ$
- Body: die-cast aluminium housing
- Color: black
- IP rating: IP30 (front and rear)
- Panel weight: 8 kg
- Weight per square meter: 32 kg
- Hanging Panel Quantity \leq : 20 for hanging and 12 for grounding
- Compliant Standard: CE

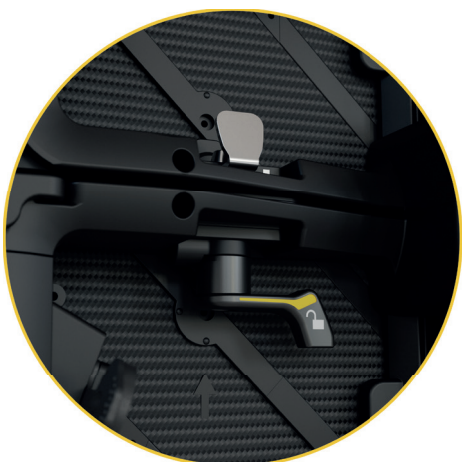
Indoor White LEDs Outdoor Black LEDs



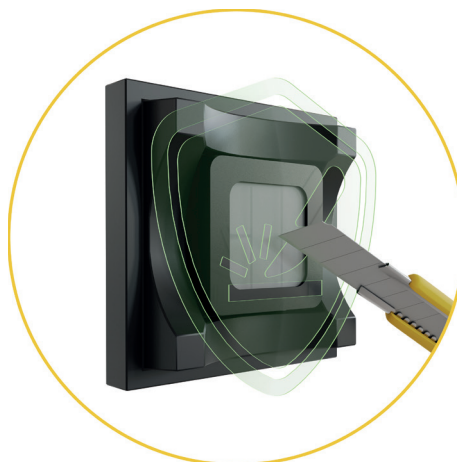
Single-Person Installation



Automatic Lock Design



Scratch Protection of the Lamp Face



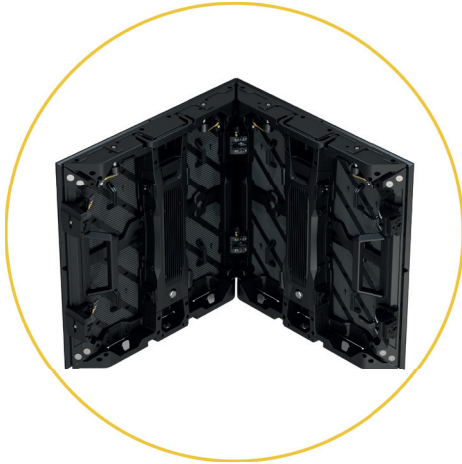
Flip Corners Shield and Bottom Protection



On Board Curve Mechanics $\pm 10^\circ$



Special C 90° Corner



Special S +/- 40° Flexible Tiles



Fast and Tool Free Replacement of PSU and LED Module



Refresh Rate of 3.840 Hz



Lightweight: Approx 23Kg/Sqm



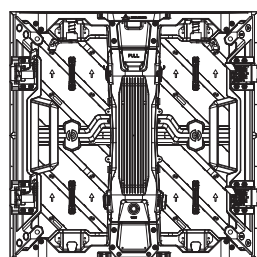
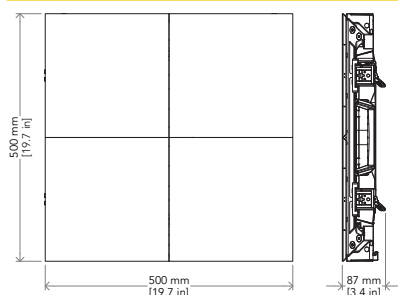
Novastar A8S Receiver Card



ACCESSORIES & RELATED PRODUCTS

	SXFCM8026C45	Flightcase 8 in1 for SIGMAX26BC1X1BF		KSXGHR	Back plate for SIGMAX and KAPPAX series LED wall for ground system fixing
	KSXHGB01C45LR	Double side 45° cut fly bar / ground bar for SIGMAX26BC1X1BF		OXACL01/10	Power cable for OMEGAX and DELTAX LED display series L.1/10 m
	KSXCJB	Ground system back horizontal support for SIGMAX and KAPPAX series LED wall		SXDC01/10	Data cable for SIGMAX LED display series assembled with RJ45
	KSXBS21	2in1 back support for SIGMAX and KAPPAX series LED wall for ground system fixing		SIGMAXCMM	Optional male mechanics for SIGMAXC cabinets for corner / cube configurations
	KSXBS31	3in1 back support for SIGMAX and KAPPAX series LED wall for ground system fixing		SIGMAXCFM	Optional female mechanics for SIGMAXC cabinets for corner / cube configurations
	KSXBSC	Back plate for SIGMAX and KAPPAX series LED wall for ground system fixing			

TECHNICAL DRAWINGS



Visit our website
for specifications and
tech documentations

