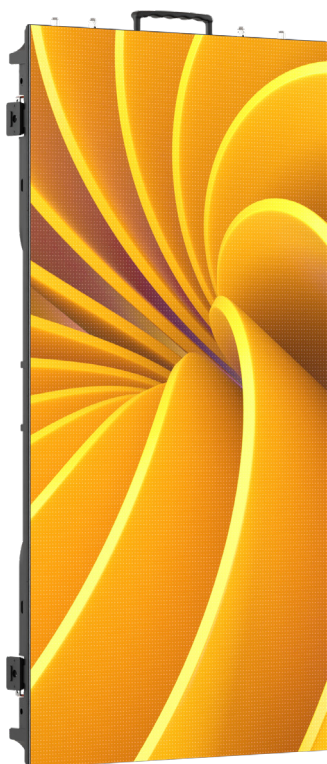


GammaPix 48T1X2WF

Outdoor rental 4,8 mm LED screen, 50x100cm tile, black frame & white face LEDs
ORDER CODE: **GAMMAX48T1X2WF**



GammaPix 48T is a rental LED screen for outdoor use with a 4,8 mm pixel pitch, designed to meet requirements for touring, events and install applications. This series is available in both 50x50cm and 50x100cm tiles, mechanically compatible in order to assemble a large surface of screen in a shorter time.

The mechanical design of the tiles has been conceived to allow fast single person installation with automatic lock design and extra safety & handling features such as scratch protection of the lamp face and bottom protection.

GammaPix 48T tiles have on board curve mechanics allowing both concave and convex precise installation of $+10^\circ$ / -10° each tile and the weight has been reduced down to 6,4 kg (50x50cm tiles) and 11,4 kg (50x100 tiles).

The on-board electronics include the latest generation of Novastar A5s receiver card and refresh rate up to 3.840 Hz.

MAIN FEATURES

- Single person installation, auto lock design and scratch protection
- Built in curve mechanics for $+10^\circ$ / -10° concave & convex
- Refresh rate of 3.840 Hz

TECHNICAL SPECIFICATION

VIDEO

- Driver chip type:ICN 2153
- LED source: Nationstar SMD1921 black frame and white face
- Pixel pitch:4,8 mm
- Panel resolution:104x208 pixels
- Module resolution:52x52 pixels
- Luminous flux:3.500 nit
- Contrast:3.000:1
- Grayscale: 14 bit
- Refresh rate \geq :3.840 Hz
- Drive Mode: 1/13 scan, constant current
- Vertical viewing angle:120 °
- Horizontal viewing angle:140 °
- LED density:43.276 LED/sqm
- Dead Pixel Ratio:<0,002
- LED avg life span: 100.000

ELECTRICAL

- Power input/output: IPKON Seetronic IN/OUT
- Power supply: AC 110/230 V 50/60 Hz
- Max power consumption (panel):300 W
- Avg power consumption (panel):100 W
- Max power consumption (sqm):600 W
- Avg power consumption (sqm):200 W
- Standby power consumption (pannello):100 W
- Max rated current/panel::AC 220 V / 1.36 A
- Working temperature:-20°C / +50 °C
- Working humidity:10~90 RH %

CONTROL

- Receiving card type:A5S PLUS
- Other controllers type:mapping, firmware copy, RCFGX restore, calibration chip on LDM (module flash)
- Control protocol: Novastar
- Signal input: RJ45
- Signal output: RJ45

MECHANICS

- Other specifics:curve configurations (mechanics on board), bottom protection, auto-lock mechanics
- Magnetic LED modules:not available
- Module size (WxH):250x250 mm
- Panel size(WxHxD):500x1000x64 mm
- Vertical hanging system: built-in aliscraf clamp support
- Cooling: natural cooling of the peculiar chassis and to absence of fans
- Connection: seamless locking system
- Curvability:convex and concave -10° / $+10^\circ$
- Body: die-cast aluminium housing
- Color: black
- IP rating:IP65/IP54 (front and rear)
- Panel weight:11,4 kg
- Weight per square meter:22,8 kg
- Hanging Panel Quantity \leq :10 for hanging and 6 for grounding
- Compliant Standard: CE, UKCA

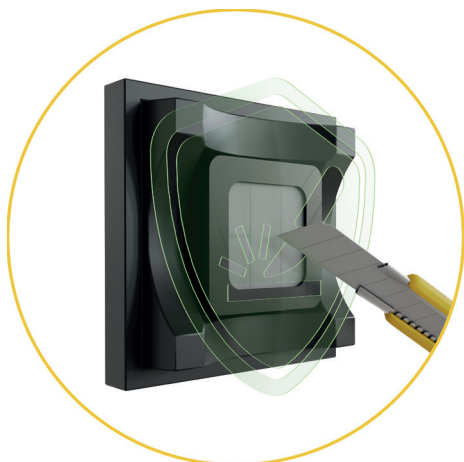
Single-Person Installation



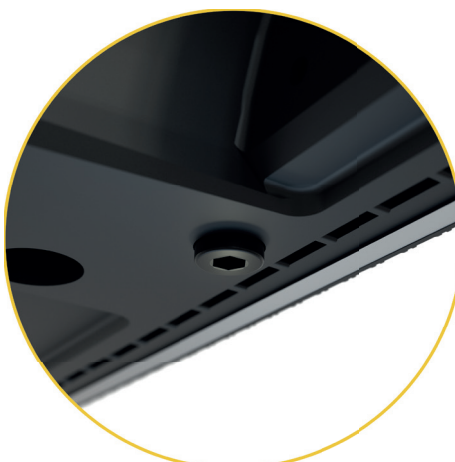
Automatic Lock Design



Scratch Protection of the Lamp Face



Bottom Protection



Flip Corners Shield



On Board Curve Mechanics +/- 10°



Fast Swap of LDMs



Refresh Rate of 3.840 Hz



Lightweight:
Approx 23Kg/Sqm



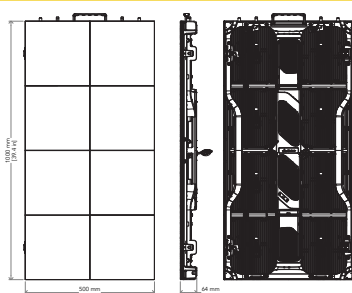
Novastar A5S Receiver Card



ACCESSORIES & RELATED PRODUCTS

	GXFCM50481X2	Flightcase 5 in 1 for GAMMAX48T1X2WF		GXCJ	Cabinet curve metal plate for GAMMAX series LED wall
	GXHGB01	Fly bar / ground bar for GAMMAX29B and GAMMAX48T systems, 1 column		OXFCIS100	Rigging/ground-stack structure flightcase OMEGAX-DELTA series LED-display, 100cm
	GXHGB02	Fly bar / ground bar for GAMMAX29B and GAMMAX48T systems, 2 columns		OXFCIS200	Rigging/ground-stack structure flightcase OMEGAX-DELTA series LED-display, 200cm
	DXBS21	2in1 back support for GAMMAX series LED wall for ground system fixing		OXFCSP	Spare part flightcase for OMEGAX-DELTA series LED-display
	DXBS31	3in1 back support for GAMMAX series LED wall for ground system fixing		OXACL01/10	Power cable for OMEGAX and DELTAX LED display series L.1/10 m
	DXBS41	4in1 back support for GAMMAX series LED wall for ground system fixing		SXDC01/10	Data cable for SIGMAX LED display series assembled with RJ45
	DXBSC	Back plate for DELTAX series LED wall for ground system fixing			
	DXXJ	Metal joint used to connect 4 pcs DELTAX series cabinets, M10 hole for clamp			

TECHNICAL DRAWINGS



Visit our website
for specifications and
tech documentations

