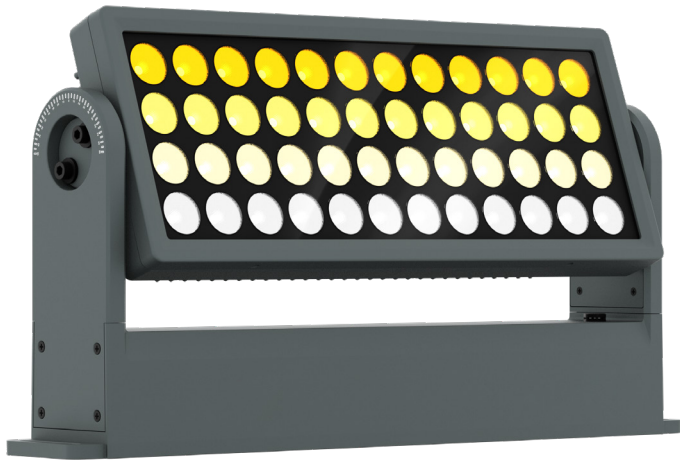


ArcPod 48Q

48x10W RGBW/FC outdoor IP66 LED wash light for exterior installations

ORDER CODE: **ARCP0D48Q**



ArcPod 48Q is a compact high-power exterior wash light featuring an outstanding brightness of 23'000 lumens. It is equipped with 48x10W RGBW / FC LEDs, delivering a limitless reproduction of colours and whites. **ArcPod 48Q** is designed slim and fanless, and it's completed by a wide selection of available optics, making the ArcPod 48Q an incredibly flexible and versatile device for any outdoor install.

MAIN FEATURES

- 48x10W RGBW / FC LEDs delivering 23'000 lumens
- LED emitters controllable in 4 sections
- Compact form factor and fanless

TECHNICAL SPECIFICATION

LIGHT SOURCE

- Source: 48x10W RGBW / FC LEDs
- Luminous flux: (10°) 18'421 lm; (15°) 22'977 lm; (25°) 20'741 lm; (45°) 16'408lm @full
- Lux: (10°) 37'370 lx; (15°) 30'888 lx; (25°) 12'884 lx; (45°) 2'739lx @3 m full
- Lux: (10°) 13'453 lx; (15°) 11'120 lx; (25°) 4'638 lx; (45°) 986lx @5 m full
- Source life expectancy: > 50.000 hrs (L70B10 @Ta 25° C / 77° F)

OPTICS

- Beam angle: 15°
- Field angle: 27°
- Additional optics: 10° - 25° - 45° (optional)

COLOUR SYSTEM

- Colour mixing: RGBW / FC
- CCT: CCT control through dedicated DMX channel
- White presets: 2.800 K ~ 10.000K
- Colour wheel: virtual colour wheel with macros
- Macros: several pre-built macros with adjustable speed

DYNAMIC EFFECTS

- FX generator: up to 4 linear controllable sections
- Static mode: selection of static colour

BODY

- Tilt angle: 0 ~ 130° with manual regulation
- Body: sturdy die-cast aluminium body
- Body colour: RAL 7012

CONTROL

- Protocols: DMX512, RDM
- DMX channels: 5 / 7 / 10 / 17 / 22channel
- Pixel control: up to 4 linear controllable sections
- RDM: RDM for remote monitoring and settings
- Display: user interface through DATAMASTER external coder (not included)
- Firmware upgrade: yes, via USB - DMX interface (UPBOX1) not included
- Master/Slave: for synchronised operation of more units linked in a chain

ACCESSORIES & RELATED PRODUCTS

- | | |
|---|--|
| ▪ C6002B | Slim aluminum clamp, 200kg loading, 48-51mm tubes, M10 bolt, Black |
| ▪ FCLA48Q | Flight case for 6 pcs of ARCP0D48Q |
| ▪ RSR0630B | Steel security cable for hanging bodies, inox steel shackle, L=60 cm, black |
| ▪ A48QFILTER20 30/40/60/80 | 20°/30°/40°/60°/80° symmetric light diffusion filter for ARCP0D48Q and ARCP0D96Q 15x44,7 cm |
| ▪ A48QFILTER1090/1060 3060/9010/6010/6030 | 10°x90°/10°x60°/30°x60°/90°x10°/60°x10°/60°x30° asymmetric light diffusion filter for ARCP0D48Q and ARCP0D96Q 15x44,7 cm |
| ▪ S27QLENS10/15/25/45 | 10°/15°/25°/45° lens for SOLAR27Q, ARCP0D27Q, SOLAR48Q, ARCP0D48Q, ARCP0D15Q and ARCP0D96Q |

ELECTRONICS

- Dimmer: linear 0 ~ 100% electronic dimmer
- Dimmer curves: 4 selectable dimming modes available
- Strobe / shutter: 1 ~ 30 Hz, electronic
- Operating temperature: -20° C / +45° C (-4° F / +113° F)
- LED Control: flicker free operation
- Selectable PWM: 600 ~ 25.000 Hz

ELECTRICAL

- Max power consumption: 700
- Mains power supply: 100-240V - 50/60Hz
- Max power consumption: 521W
- Max power consumption (at 120V): 552W
- Output (at 230V): 4 units on a single power line
- Output (at 120V): 2 units on a single power line
- Power factor: 0,95

PHYSICAL

- IP rating: 66 for outdoor installations
- IK rating: 08
- Cooling: passive cooling and fan-free
- Adaptors: XLR and Schuko 16A adaptors included
- Signal connection: moulded IP signal IN/OUT connectors
- Power connection: moulded IP power IN/OUT connectors
- Dimensions (WxHxD): 584x304x93mm
- Weight: 14kg

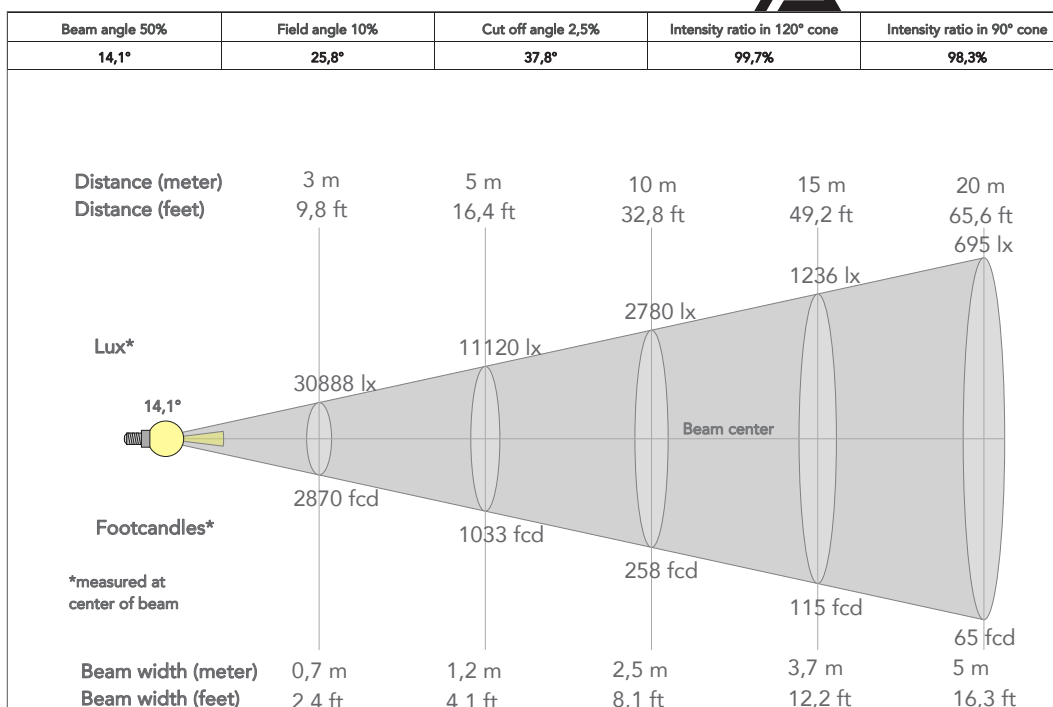
CERTIFICATIONS / APPROVALS

- Certifications / Approvals: CE, UKCA, RCM, cTUVus, FCC

- | | |
|-----------------------|--|
| ▪ S48QBD | Black barn door 4 directional flaps to adjust the light beam, SOLAR4Q,ARCP0D48Q |
| ▪ DATAMASTER | RDM/DMX tool,cable tester, 5p XLR connectors,pouch, charging cable, XLR adapters |
| ▪ AWEXAC1L03/05/10/20 | IP67 power extension cable for outdoor architectural projectors, L.03/05/10/20 m |
| ▪ AWEXDC1L03/05/10/20 | IP67 DMX extension cable for outdoor architectural projectors, L.03/05/10/20 m |
| ▪ UPBOX1U | Firmware uploader kit, USB IN, 3pin XLR DMX OUT, USB OUT |

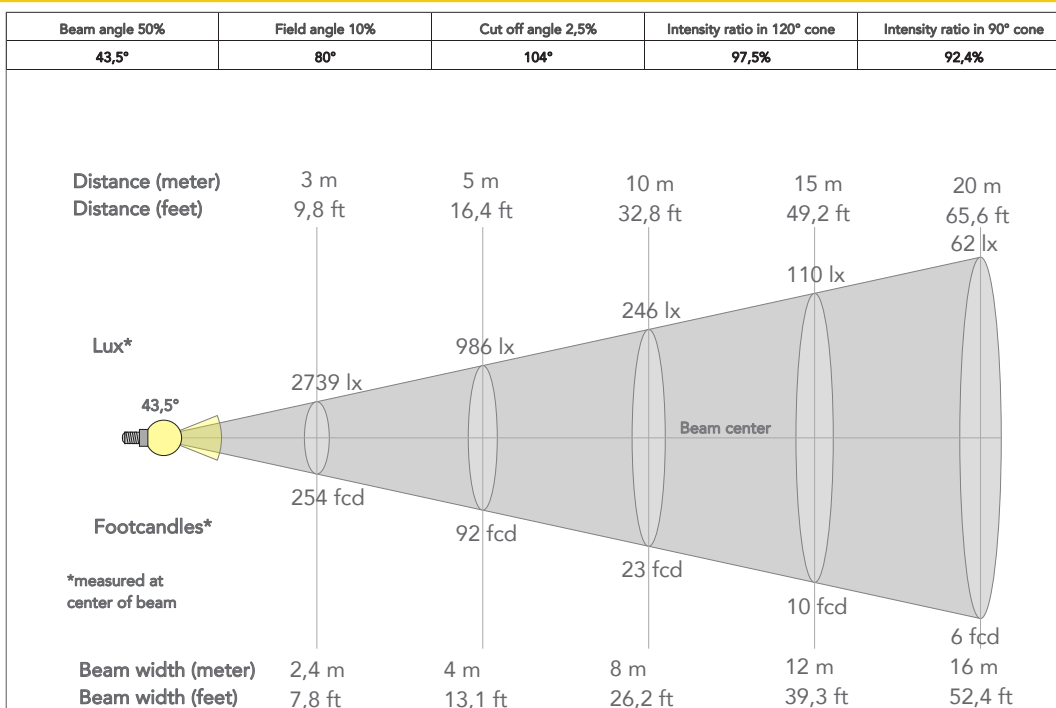
PRESET FULL ON

Beam angle 50%:15°

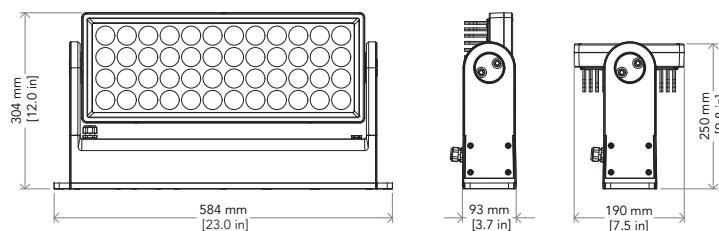


PRESET FULL ON

Beam angle 50%: 45°



TECHNICAL DRAWINGS



CERTIFICATIONS / APPROVALS



Conforms to UL STD. 1573
Certified to CSA STD: C22.2 NO. 166

Visit our website
for specifications and
tech documentations

