

# StudioCob PlusFC

150W IP65 rated full colour COB LED Par



**StudioCob PlusFC** is a powerful, incredibly versatile and IP65 rated LED PAR. Fusing the old and the new, it pairs a COB LED source with a traditional parabolic reflector to deliver a proper PAR replacement with a homogenised output, single shadow and flexible lens options.

## MAIN FEATURES

- IP65 rated connectors for easy use both indoor and outdoor
- 150W RGBW COB LED source with HD dimming with an extensive and even colour palette
- Flexible lens options of 18° - 38° - 60°

## VERSIONS

Code	Housing
STUDIOCOBPLUSFCBK	Black
STUDIOCOBPLUSFCWH	White

## TECHNICAL SPECIFICATION

### LIGHT SOURCE

- Source: 150W COB RGBW / FC LED
- Luminous flux: (18°) 3'530 lm - (38°) 3'172lm
- Lux: (18°) 2'558lx @3 m full
- Lux: (38°) 645lx
- Source life expectancy: > 50.000 h

### OPTICS

- Beam angle: (on-board) 18° - (inc) 38° - (opt) 60°
- Field angle: (on-board) 36° - (inc) 63°
- Lens type: parabolic reflector in combination with HD fresnel lens
- Additional optics: 38° (inc)

### COLOUR SYSTEM

- Colour mixing: RGBW / FC
- CCT: CCT control through dedicated DMX channel
- White presets: 2.000 K ~ 10.000K
- Colour wheel: virtual colour wheel with macros

### DYNAMIC EFFECTS

- Static mode: selection of static colour
- Manual mode: manual adjustment of colour
- Auto mode: built-in programs with execution speed adjustment

### BODY

- Body: sturdy die-cast aluminium body
- Body colour: black, white finishing available

### CONTROL

- Protocols: DMX512, RDM
- DMX channels: 4 / 6 / 10channel
- RDM: RDM for remote monitoring and settings
- Display: black OLED touch display
- Firmware upgrade: yes, via USB - DMX interface (UPBOX1) not included
- Master/Slave: for synchronised operation of more units linked in a chain

### ELECTRONICS

- Dimmer: linear 0 ~ 100% electronic dimmer
- Dimmer curves: 4 selectable dimming modes available
- Strobe / shutter: 1 - 28 Hz, electronic
- Display battery: self-charging battery backup
- Operating temperature: -20° ~ +45°
- LED Control: flicker free operation
- Selectable PWM: 600 ~ 25.000 Hz

### ELECTRICAL

- Mains power supply: 100-240V - 50/60Hz
- Max power consumption: 140W
- Max power consumption (at 120V): 145W
- Output (at 230V): 12 units on a single power line
- Power factor: 0,96

### PHYSICAL

- IP rating: 65 for temporary outdoor application, not for fixed installation
- Cooling: active, silent operation
- Suspension and fixing: double hanging bracket suitable for safe hanging and for floor positioning
- Signal connection: Seetronic XLR 5p IN/OUT connectors
- Power connection: Seetronic powerCON waterproof IN/OUT connectors
- Dimensions (WxHxD): 259x187x370mm
- Weight: 5,6kg

### CERTIFICATIONS / APPROVALS

- Certifications / Approvals: CE, UKCA, RCM, cTUVus, FCC

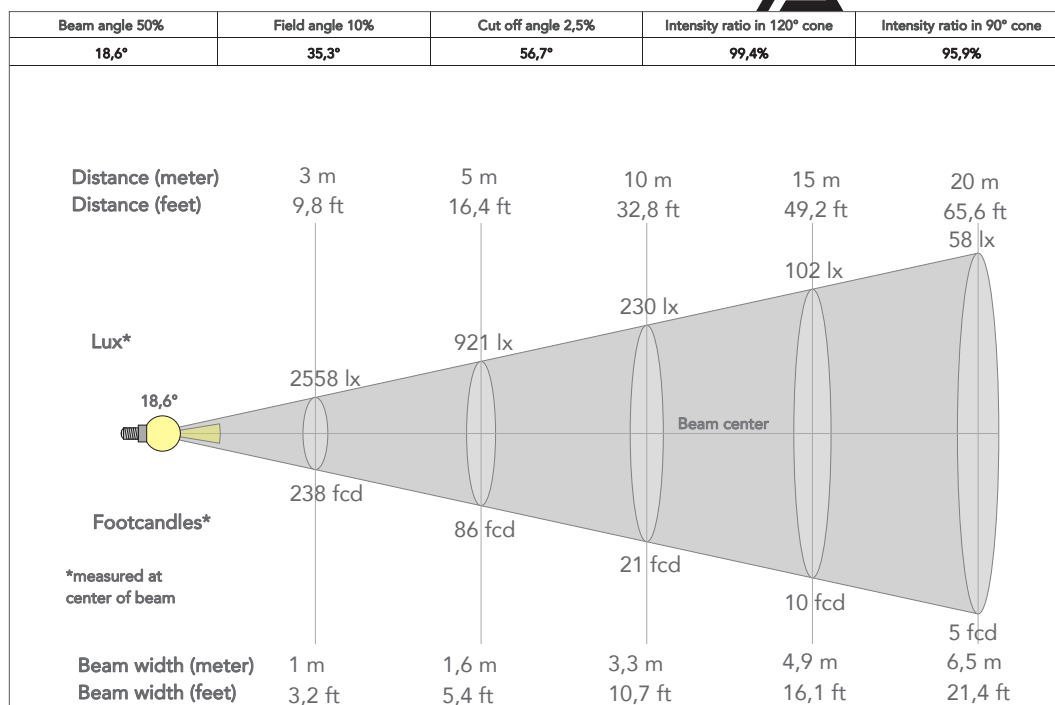
## ACCESSORIES & RELATED PRODUCTS

▪ 9313FXWL03	Ass. 3x2.5mm TH07 cable, 16A 3p 230V CEE plug, SETSAC3FX socket, L.3 m
▪ 9333FXWL03	Ass. 3x2.5mm TH07 cable, SHUKO plug, SETSAC3FX socket, L.3m
▪ 938225L03	3x2.5mm TH07 Cable, 16A SETSAC3MX, 16A SETSAC3FX, L. 3m
▪ C6002B	Slim aluminum clamp, 200kg loading, 48-51mm tubes, M10 bolt, Black
▪ INF53415L03	Dmx cable HC5340. SETMC5MXXB XLR 5p->SETMC5FXXB XLR (f) 5p L.3m

▪ RSR0630B	Steel security cable for hanging bodies, inox steel shackle, L=60 cm, black
▪ STUDIOCOBPLUSL18	Optics for STUDIOCOBPLUS projectors series, 18°
▪ STUDIOCOBPLUSL38	Optics for STUDIOCOBPLUS projectors series, 38°
▪ STUDIOCOBTPG	Filter frame for STUDIOCOB projectors
▪ STUDIOCOBPLUSL60	Optics for STUDIOCOBPLUS projectors series, 60°
▪ STUDIOCOBBD	Barn door 4 directional flaps to adjust the light beam, f. frame included
▪ FCLCOBPLUS	Flight case for 8 STUDIOCOBPLUS
▪ UPBOX1U	Firmware uploader kit, USB IN, 3pin XLR DMX OUT, USB OUT

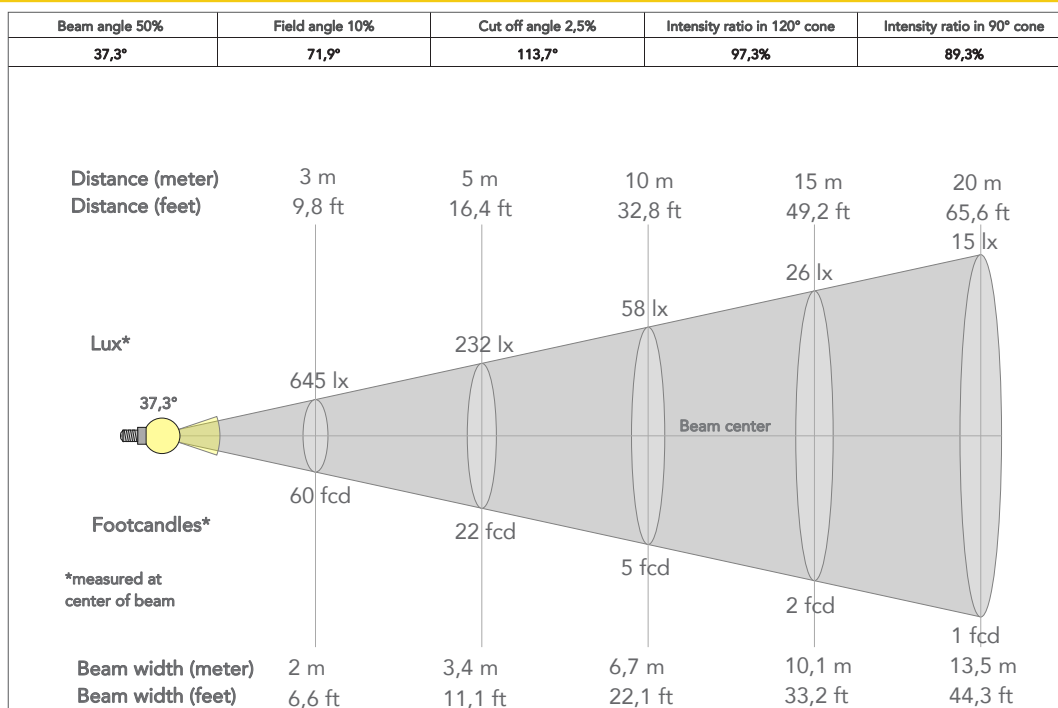
## PRESET FULL ON

Beam angle 18°

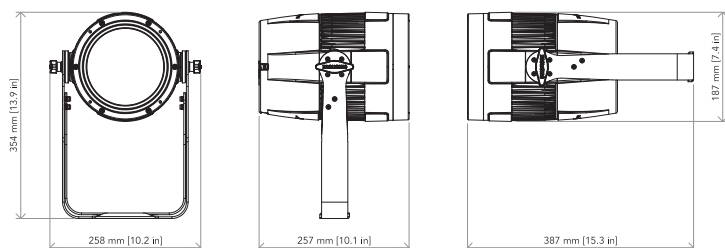


## PRESET FULL ON

Beam angle 18°



## TECHNICAL DRAWINGS



## CERTIFICATIONS / APPROVALS



Conforms to UL STD. 1573  
Certified to CSA STD: C22.2 NO. 166

Visit our website  
for specifications and  
tech documentations

