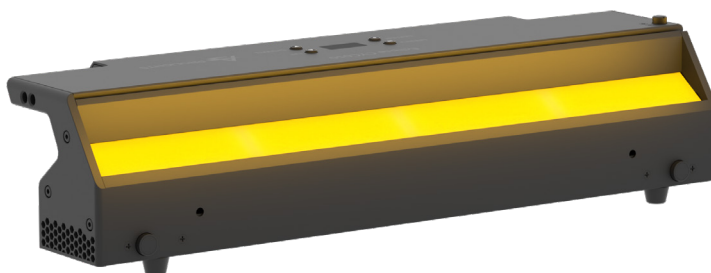




EclCyclorama 050

170 W linear soft CYC and flood light with
RGB + Warm White colour mixing



USER MANUAL

Thank you for choosing PROLIGHTS

Please note that every PROLIGHTS product has been designed in Italy to meet quality and performance requirements for professionals and designed and manufactured for the use and application as shown in this document.

Any other use, if not expressly indicated, could compromise the good condition/operation of the product and/or be a source of danger.

This product is meant for professional use. Therefore, commercial use of this equipment is subject to the respectively applicable national accident prevention rules and regulations.

Features, specifications and appearance are subject to change without notice. Music & Lights S.r.l. and all affiliated companies disclaim liability for any injury, damage, direct or indirect loss, consequential or economic loss or any other loss occasioned by the use of, inability to use or reliance on the information contained in this document.

Product user manual can be downloaded from the website www.prolights.it , or can be inquired to the official PROLIGHTS distributors of your territory (https://www.prolights.it/sales_network.html).

Scanning the below **QR Code**, you will access the download area of the product page, where you can find a broad set of always updated technical documentation: specifications, user manual, technical drawings, photometrics, personalities, fixture firmware updates.



**Visit the download area
of the product page**



The PROLIGHTS Logo, PROLIGHTS names and all other trademark in this document pertaining to PROLIGHTS services or PROLIGHTS product are trademarks OWNED or licensed by Music & Lights S.r.l., its affiliates, and subsidiaries. PROLIGHTS is a registered trademark by Music & Lights S.r.l. All right reserved. Music & Lights – Via A. Olivetti, snc - 04026 - Minturno (LT) ITALY.

INDEX

SAFETY INFORMATION	2
1 - PACKAGING	05
PACKAGE CONTENT	05
OPTIONAL ACCESSORIES	05
2 - TECHNICAL DRAWING	05
3 - INSTALLATION	06
MOUNTING	06
INTRODUCTION FOR INSTALLATION SET UP	07
INSTALLATION CONFIGURATIONS	07
4 - CONNECTION TO THE MAINS SUPPLY	08
5 - START UP	08
CONNECT AND DISCONNECT POWER FROM THE PRODUCT	08
6 - PRODUCT OVERVIEW	09
7 - DMX CONNECTION	10
CONNECTION OF THE CONTROL SIGNAL: DMX LINE	10
INSTRUCTIONS FOR A RELIABLE DMX CONNECTION	10
CONNECTION DAISY CHAIN	10
CONNECTION OF THE DMX LINE	10
CONSTRUCTION OF THE DMX TERMINATION	11
DMX ADDRESSING	11
ETHERNET CONNECTION	11
ETHERNET OPERATION	11
ETHERNET TO DMX OPERATIONS	12
OPERATION AS A WIRELESS TRANSMITTER	13
Unlinking the transmitter	13
DMX TO WDMX (TX)	13
OPERATION AS A WIRELESS RECEIVER	14
Reset the receiver	14
WDMX TO DMX (RX)	14
8 - CONTROL PANEL	15
DISPLAY AND BUTTONS LAYOUT	15
9 - MENU STRUCTURE	16
10 - RDM FUNCTIONS	19
11 - DMX CHARTS	20
12 - ACCESSORIES INSTALLATION	24
THE POLE OPERATED YOKE (CODE ECLCYC050PO)	24
DIFFUSION FILTERS (CODE ECLCYCF)	25
BARN DOOR (CODE ECLCYCBD050)	26
HANGING BAR (CODE ECLCYCOHB)	27
13 - MAINTENANCE	28
MAINTENANCE AND CLEANING THE PRODUCT	28
REPLACING THE FUSE	28
VISUAL CHECK OF PRODUCT HOUSING	28
TROUBLESHOOTING	29

SAFETY INFORMATION



WARNING!

- Please read carefully the instruction reported in this section before installing, powering, operating or servicing the product and observe the indications also for its future handling.



This unit is not for household and residential use, only professional applications.



Connection to mains supply

- The Connection to the mains supply must be carried out by a qualified electrical installer.
- Use only AC supplies 100-240V 50-60 Hz, the fixture must be electrically connected to ground (earth).
- Select the cable cross section in according with the maximum current draw of the product and the possible number of products connected at the same power line.
- The AC mains power distribution circuit must be equipped with magnetic+residual current circuit breaker protection.
- Do not connect it to a dimmer system; doing so may damage the product.



Protection and Warning against electrical shock

- Do not remove any cover from the product, always disconnect the product from AC power before servicing.
- Ensure that the fixture is electrically connected to ground (earth). And use only a source of AC power that complies with local building and electrical codes and has both overload and ground-fault (earth-fault) protection.
- Before using the fixture, check that all power distribution equipment and cables are in perfect condition and rated for the current requirements of all connected devices.
- Isolate the fixture from power immediately if the power plug or any seal, cover, cable, or other components are damaged, defective, deformed or showing signs of overheating.
- Do not reapply power until repairs have been completed.
- Refer any service operation not described in this manual to PROLIGHTS Service team or an authorized PROLIGHTS service center.



Installation

- Make sure that all visible parts of the product are in good visible condition before its use or installation.
- Make sure the point of anchorage is stable before positioning the projector.
- When suspending the fixture above ground level, secure it against failure of primary attachments by attaching a safety cable that is approved as a safety attachment for the weight of the fixture to the attachment point on the main frame of the product. In case the safety cable, enter in action, it needs to be replaced with a new one.
- Install the product only in well ventilated places.
- For non temporary installations, ensure that the fixture is securely fastened to a load-bearing surface with suitable corrosionresistant hardware.
- For a temporary installation with clamps, ensure that the quarter-turn fastener and/or screws are turned fully, and secured with a suitable safety cable.



Minimum distance of illuminated objects

- The projector needs to be positioned so that the objects hit by the beam of light are at least 0.5 meters (1.64 ft) from the lens of the projector.

T_a45°C

Max operating ambient temperature (T_a)

- Do not operate the fixture if the ambient temperature (T_a) exceeds 45 °C (113 °F).

T_a-10°C

Minimum operating ambient temperature (T_a)

- Do not operate the fixture if the ambient temperature (T_a) is below -10 °C (14 °F).



Protection from burns and fire

- The exterior of the fixture becomes hot during use. Avoid contact by persons and materials.
- Ensure that there is free and unobstructed airflow around the fixture.
- Keep flammable materials well away from the fixture
- Do not expose the front glass to sunlight or any other strong light source from any angle. Lenses can focus the sun's rays inside the fixture, creating a potential fire hazard.
- Do not attempt to bypass thermostatic switches or fuses.



Indoor use

- This product is designed for indoor and dry environments.
- Do not use in wet location and do not expose the fixture to rain or moisture.
- Never use the fixture in places subject to vibrations or bumps.
- Make certain that no inflammable liquids, water or metal objects enter the fixture.
- Excessive dust, smoke fluid, and particle build up degrades performance, causes overheating and will damage the fixture.
- Damages caused by inadequate cleaning or maintenance are not covered by the product warranty.

T_c70°C

Temperature of the external surface

- The surface of the fixture can reach up to 70 °C (158 °F) during operation. Avoid contact with people and materials.



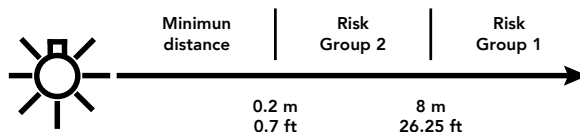
Maintenance

- Warning! Disconnect the fixture from AC mains power and allow to cool for at least 10 minutes before handling.
- Only technicians who are authorized by PROLIGHTS or Authorised service partners are permitted to open the fixture.
- Users may carry out external cleaning, following the warnings and instructions provided, but any service operation not described in this manual must be referred to a qualified service technician.
- Important! Excessive dust, smoke fluid, and particle build up degrades performance, causes overheating and will damage the fixture. Damages caused by inadequate cleaning or maintenance is not covered by the product warranty.



Photobiological safety

- This device emits potentially dangerous optical radiation and is identified in the category of Risk Group 2 according to EN 62471.



**Do not stare at the operating light source**

- Do not look directly at the LED source during operation. It can be harmful to the eyes and skin.
- During Installation, operation and maintenance, be prepared for the fixture to light and move suddenly when connected to power.
- The device should be positioned so that prolonged staring into the luminaire at a distance closer than 8 m (26.25 ft) is not expected.

**Disposal**

- This product is supplied in compliance with European Directive 2012/19/EU – Waste Electrical and Electronic Equipment (WEEE). To preserve the environment please dispose/ recycle this product at the end of its life according to the local regulation.

**The products to which this manual refers comply with:**

- 2014/35/EU - Safety of electrical equipment supplied at low voltage (LVD).
- 2014/30/EU - Electromagnetic Compatibility (EMC).
- 2011/65/EU - Restriction of the use of certain hazardous substances (RoHS).
- 2014/53/EU - Radio Equipment Directive (RED).

**The products to which this manual refers comply with:**

- UL 1573 + CSA C22.2 No. 166 - Stage and Studio Luminaires and Connector Strips.
- UL 1012 + CSA C22.2 No. 107.1 - Standard for power units other than class 2.

**FCC Compliance:**

- This device complies with Part 15 of the FCC Rules. Operation is subject to the following two conditions:
 1. This device may not cause harmful interference, and
 2. This device must accept any interference received, including interference that may cause undesired operation.

**Other approvals**

1 - PACKAGING

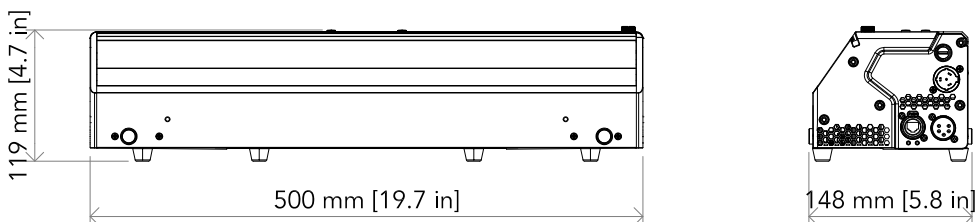
PACKAGE CONTENT

- 1x ECLCYC050;
- 1x 1,5 meters power cable (BARE END - SEETRONIC IP65 power connector);
- 2x OS25;
- User manual.

OPTIONAL ACCESSORIES

- WSBBR512G6: blackBox R-512 G6 receiver 512Ch, 2.45GHz, DMX&RDM, Bluetooth, G3, G4, G4S, G5, CRMX;
- WSBBR512G5: blackBox R-512 G5 receiver 512Ch, 2.45GHz & 5.8GHz, DMX/RDM optional;
- WSBBF1G6: blackBox F-1 G6 transrec, 512ch, 2.45GHz, DMX&RDM, Bluetooth, G3, G4, G4S, G5, CRMX;
- WSBBF1G5: blackBox F-1 G5 transmitter, 2,45GHz & 5.2/5,8 GHz, DMX/RDM, 512Ch;
- TOUR53415L03: dmx cable HC5340. CANC5MXX XLR 5p->CANC5FXX XLR (f) 5p, L.3m;
- FCLECLCYC: Flightcase for 4 pcs of ECLCYC100 or 8 pcs ECLCYC050 divided on two layers;
- ECLCYC050PO: Pole operated aluminium yoke bracket for pan/tilt for ECLCYC050;
- ECLCYCBD050: Upper and lower barndoor for adjust the light beam for ECLCYC050;
- ECLCYCF40L050: Light diffuser filter for ECLCYC series projectors, 40°, lenght 50 cm;
- ECLCYCF1060L050: Light diffuser filter for ECLCYC series projectors, 10°x60°, lenght 50 cm;
- ECLCYCF3060L050: Light diffuser filter for ECLCYC series projectors, 30°x60°, lenght 50 cm;
- ECLCYCOHB: Orientable hanging bar for ECLCYC series projectors;
- OS25: Quick-Lock omega bracket;
- C6040: Heavy-load aluminum clamp, 250kg load, 48-51mm tubes, M10 bolt inc.;
- RSR0630A/B: Steel security cable for hanging bodies, inox steel shackle, L=60 cm, silver/black;
- UPBOX1U: Firmware uploader kit, USB IN, 3-pin XLR DMX OUT, USB OUT.

2 - TECHNICAL DRAWING



Weight: 5 kg - 11.02 lbs

Dimensions are in mm / in - Fig.1

3 - INSTALLATION

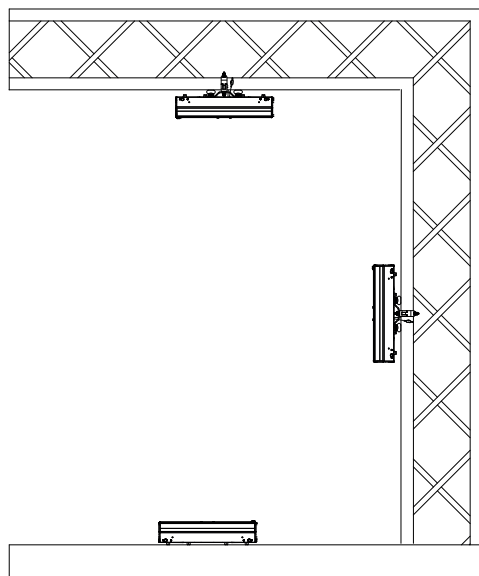
MOUNTING

Check that the supporting structure can safely bear the weight of all installed fixtures, clamps, cables, auxiliary equipment, etc. and complies with locally applicable regulations.

When suspending the fixture above ground level, secure it against failure of primary attachments by attaching a safety wire that is approved as a safety attachment for the weight of the fixture to an anchor point on the product main frame.

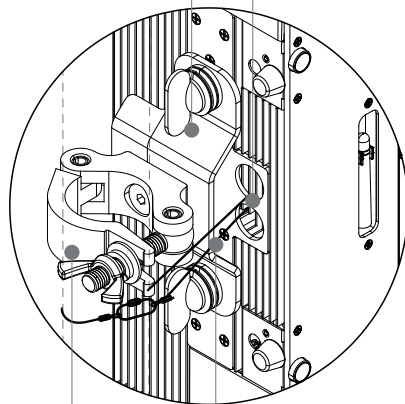
Do not use removable parts or weak anchors for secondary attachment.

Warning! When clamping the fixture to a truss or other structure at any angle, use clamps of half-coupler type. Do not use any type of clamp that does not completely encircle the structure when fastened.



Quick-Lock
omega bracket

Fixing point of
the safety cable



Clamps

Safety cable

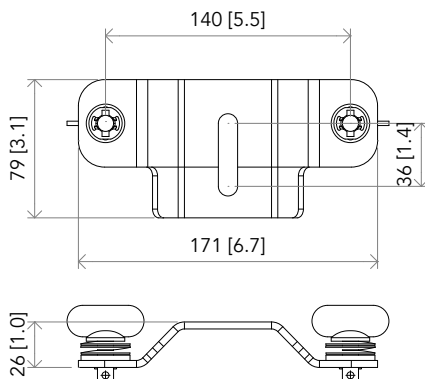
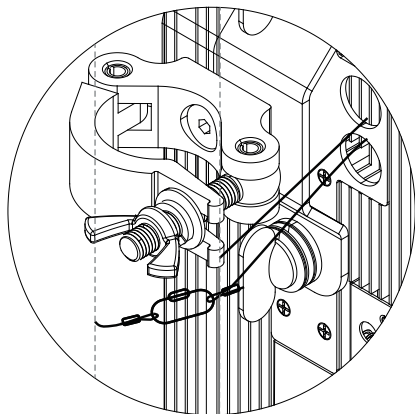


Fig.2

INTRODUCTION FOR INSTALLATION SET UP

The ECLCYC050 is an asymmetrical fixture that has been designed for application as CYC light and floodlight being able to be placed both at the front or at the end of the stage. Its soft and wide optics features a beam angle of 80° horizontal x 40° Vertical (asymmetry of 25° on the vertical), making this fixture flexible and effective to illuminate walls, sets and cyclorama uniformly with and even wash with a perfect blending of colours in multiple and flexible configurations.

The ECLCYC050 ensures good light distribution from 1m up to 3m installation distance from the CYC wall, and it can be installed placing fixtures next each other in a continuous line or with a clearance of up to 3 meter without hard edges or dark gaps, even when illuminating curved canvas.

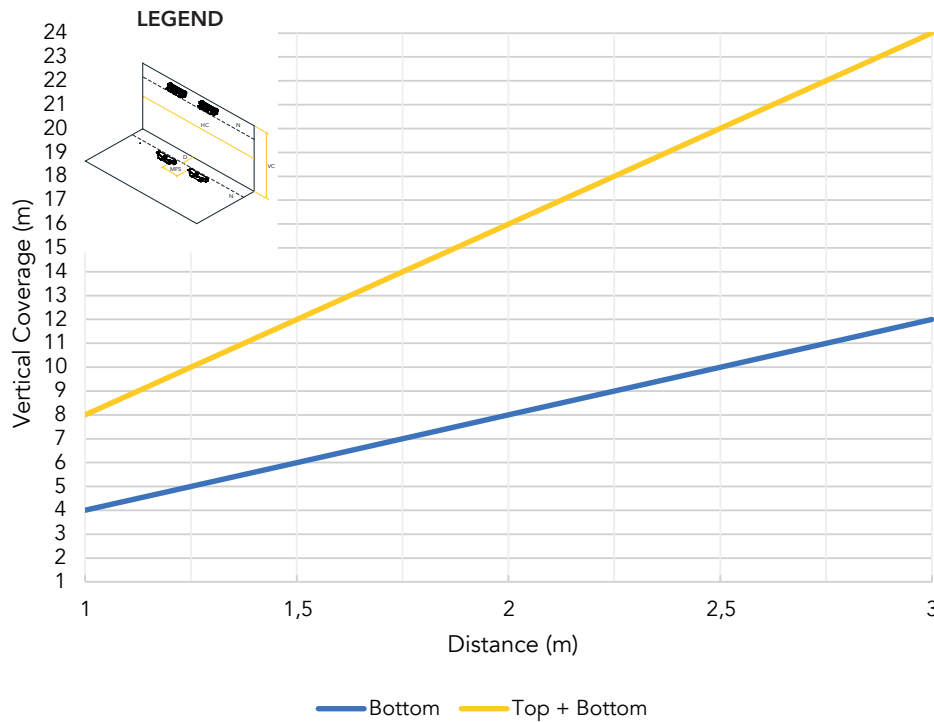
INSTALLATION CONFIGURATIONS

ECLCYC050 can be installed at the bottom, top or both top+bottom depending of the desired effect (eveness or color gradient on the cyclorama).

One of the key aspects of the ECLCYC050 is its flexibility, and this document will shows how the fixture will be have at different distance from the CYC wall, and how it performs when combines in top+bottom configuration.


The ECLCYC050 is equipped with on board adjustable foot to regulate the tilt for the fixture focusing. The Tilt adjustment has a range of $\pm 8^\circ$. For distances from 1 to 1,5m the Tilt should adjusted at $+8^\circ$, for distances more than 3m the Tilt should be adjusted at -8° .

RELATION BETWEEN VERTICAL COVERAGE AND DISTANCE FROM THE CYC WALL



4 - CONNECTION TO THE MAINS SUPPLY

WARNING: For protection from electric shock, the fixture must be earthed!
The product is equipped with auto-switching power supply that automatically adjusts to any 50-60Hz AC power source from 100-240 Volts.
If you need to install a power plug on the power cable to allow connection to power outlets, install a grounding-type (earthed) plug, following the plug manufacturer's instructions. If you have any doubts about proper installation, consult a qualified electrician.
The max power consumption is 180W.

Core (EU)	Core (US)	Connection	Plug terminal marking
Brown	Black	Live	L
Blue	White	Neutral	N
Yellow+green	Green	Earth	

5 - START UP

CONNECT AND DISCONNECT POWER FROM THE PRODUCT

To apply and disconnect power to the product:

- Check that the product is installed and secured as indicated in the Safety Informations, and that personal safety will not be put at risk when the fixture lights up.
- Connect the power connector into the Mains input socket (100-240 VAC-50/60 Hz).
- The product is then ready for its operations and can be controlled through the available input signals on board.
- To disconnect power from the product, disconnect the Mains from the socket.

6 - PRODUCT OVERVIEW

1. USER INTERFACE with display and buttons for access to the control panel functions.
2. ANTENNA of Wireless DMX Receiver internal module.
3. BUTTON FOR ANGLE ADJUSTING: range: ± 8 .
4. BUTTON FOR INSERTING BARN DOOR.
5. ADJUSTABLE RUBBER FEET.
6. POWER IN: for connection to the Mains 100-240V~/50-60Hz.
7. DMX IN (5-p XLR): 1 = GND, 2 = sign-, 3 = sign+, 4 N/C, 5 N/C.
8. EtherCON CONNECTORS IN / OUT signal.
9. MAIN FUSE HOLDER: replace a burnt-out fuse by one of the same type only (T5 AL 250 V).
10. POWER OUT: power output for connection of multiple units in series.
11. DMX OUT (5-p XLR): 1 = GND, 2 = sign-, 3 = sign+, 4 N/C, 5 N/C.

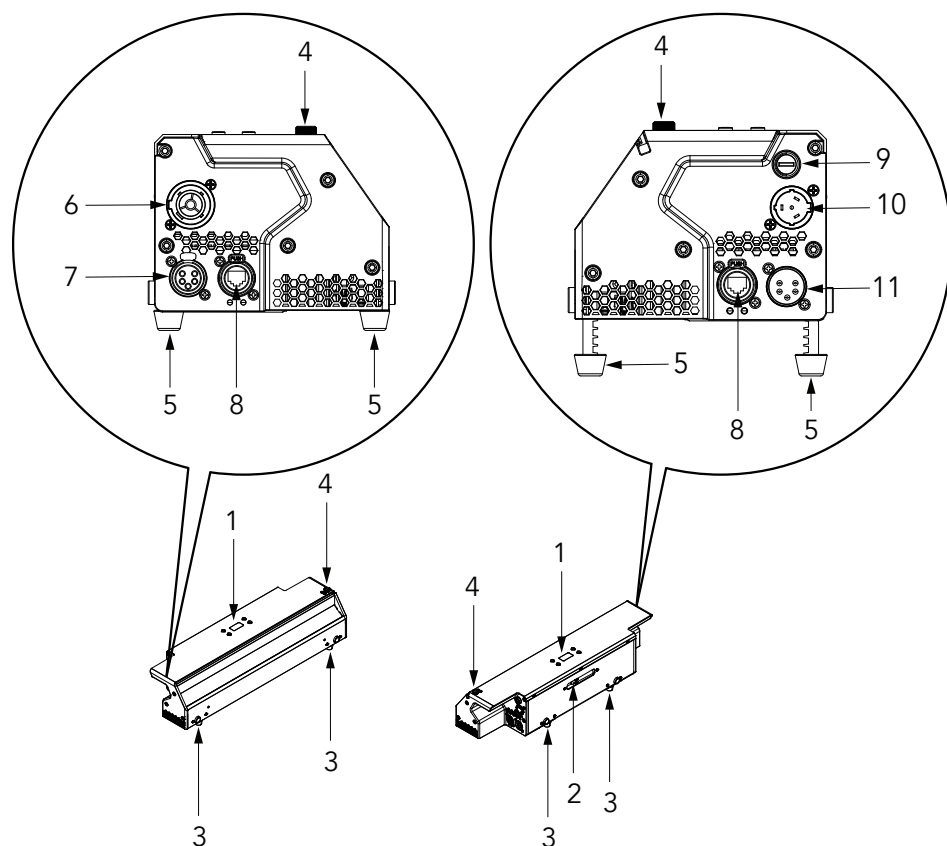


Fig.3

7 - DMX CONNECTION

CONNECTION OF THE CONTROL SIGNAL: DMX LINE

The product has XLR sockets for DMX input and output.
The default pin-out on both socket is as the following diagram:



Fig.4

INSTRUCTIONS FOR A RELIABLE DMX CONNECTION

Use shielded twisted-pair cable designed for RS-485 devices: standard microphone cable cannot transmit control data reliably over long runs. 24 AWG cable is suitable for runs up to 300 meters (1000 ft). Heavier gauge cable and/or an amplifier is recommended for longer runs.
To split the data link into branches, use splitter-amplifiers in the connection line.
Do not overload the link. Up to 32 devices may be connected on a serial link.

CONNECTION DAISY CHAIN

Connect the DMX data output from the DMX source to the product DMX input (male connector XLR) socket.
Run the data link from the product XLR output (female connector XLR) socket to the DMX input of the next fixture.
Terminate the data link by connecting a 120 Ohm signal termination. If a splitter is used, terminate each branch of the link.
Install a DMX termination plug on the last fixture on the link.

CONNECTION OF THE DMX LINE

DMX connection employs standard XLR connectors. Use shielded pair-twisted cables with 120Ω impedance and low capacity.
The following diagram shows the connection mode:

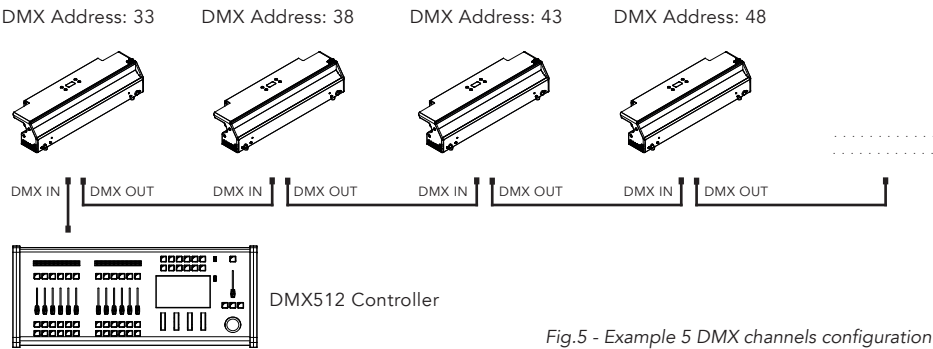


Fig.5 - Example 5 DMX channels configuration

CONSTRUCTION OF THE DMX TERMINATION

The termination is prepared by soldering a 120Ω 1/4 W resistor between pins 2 and 3 of the male XLR connector, as shown in figure.

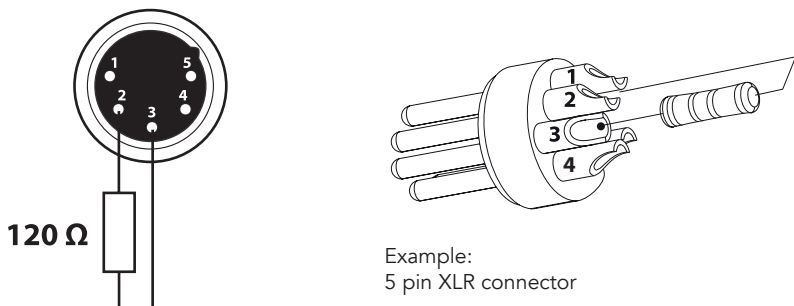


Fig.6

DMX ADDRESSING

In order to start controlling the product via DMX, the first step is to select a DMX address, also known as the start channel, this is the first channel used to receive instructions from a DMX controller. If you wish to control the product individually, it is necessary to assign a different starting address channel to each fixture.

The number of channels occupied from the product depends on the DMX mode selected, so always verify the DMX Mode in the MENU before start addressing.

If you assign two fixtures the same address, they will be executing the same behaviour. Selecting the same address to multiple fixtures can be useful for diagnostic purposes and symmetrical control.

DMX addressing is limited to make it impossible to set the DMX address so high that you are left with-out enough control channels for the product.

To set the fixture's DMX address:

1. Press MENU to open the main menu.
2. Reach the addressing menu, then select the DMX ADDRESS settings.
3. Select the address from 1 to 512 using the navigation arrows/buttons and confirm by pressing ENTER.
4. Press Menu to exit and return to the Home screen.

ETHERNET CONNECTION

The products is provided with two 8-pin RJ-45 sockets for Ethernet input/output for a simple days chain connection to the network.

The product can be controlled with ArtNet (or others available) communication protocol.

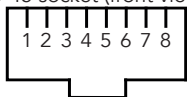
Use a network cable category 5 (with four "twisted" wire pairs) and standard RJ-45 plugs.

ETHERNET OPERATION

Please refer to the section MENU STRUCTURE contained in this document for detailed informations about the parameters of setting on the fixture (Protocol, Net, Subnet, Universe, Start Channel and IP Address, Ethernet to DMX No/Yes).

- About the IP addresses is recommended to set 002.xxx.xxx.xxx or 010.xxx.xxx.xxx.
- The submask net is fixed at 255.0.0.0.

RJ-45 socket (front view):



1-TD
2-TD-
3-RX+
4-Not connected

5-Not connected
6-RX-
7-Not connected
8-Not connected

RJ-45 socket (front view):

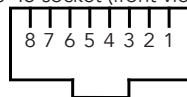


Fig.7

ETHERNET TO DMX OPERATIONS

Please refer to the section MENU STRUCTURE contained in this document for detailed informations. This function allow a product receiving an ethernet signal protocol to re-transmit the incoming signal onto a wired DMX line through its onboard XLR-out connector.

- An Ethernet protocol (Artnet, sACN or others available) has to be enabled from Ethernet menu at first fixture. **Please make sure that wireless receiver is switched to OFF if you use Ethernet communication.**
- Enable the option Ethernet To DMX from the Ethernet menu at the first product (connected to the Ethernet) in the signal chain, next products have standard DMX setting.
- Connect the Ethernet input of the first product in the data chain with the network. Connect the DMX output of this product with the input of the next product until all products are connected to the DMX chain.
- Caution: At the last product, the DMX chain has to be terminated with a terminator. Solder a 120 Ω resistor between Signal (-) and Signal (+) into a XLR-plug and connect it in the DMX-output of the last product.

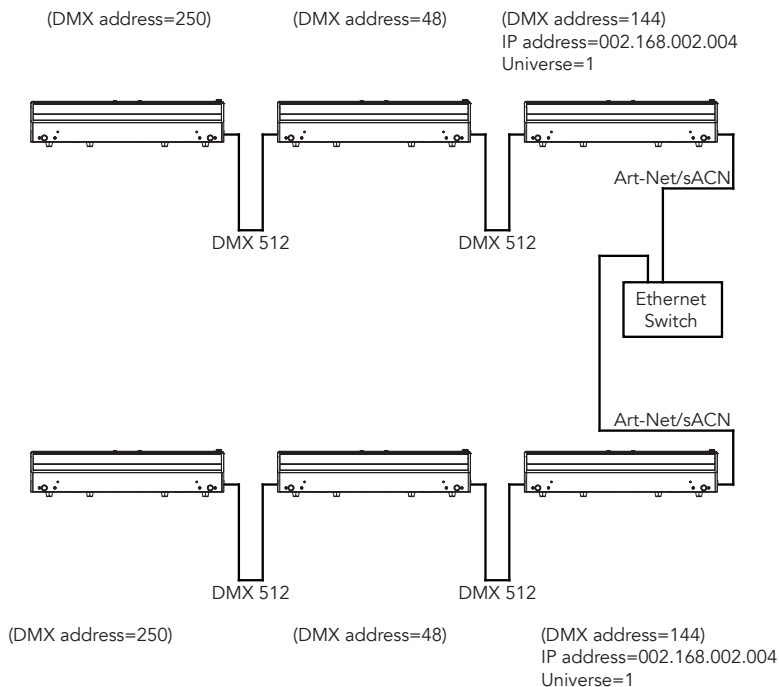


Fig.8 - Example configuration

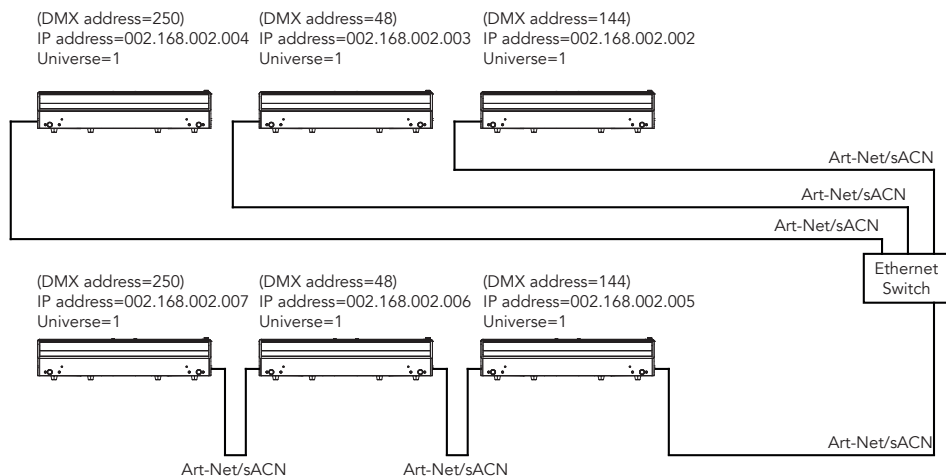


Fig.9 - Example configuration

OPERATION AS A WIRELESS TRANSMITTER

ECLCYC050 can be used as wireless trasmitter for transmitt at different wireless receivers DMX or Artnet/sACN signal. To use ECLCYC050 as wireless transmitter, please follow the procedure below:

1. Push MENU button untill you show CONNECT on display, then press ENTER button to confirm.
2. Use UP/DOWN buttons for select Wireless, then press ENTER to confirm.
3. Push ENTER button on WDMX ON/OFF function and enable it to ON.
4. Select WDMX mode and set it on Transmitter (please note that WDMX mode will be available only if WDMX ON/OFF is set to ON).
5. Ensure that the receiver units are not connected to any other transmitter. Please refer to "Reset the receiver" paragraph.
6. Enable TX LINK to ON to link transmitter to receivers (please note that TX LINK will be available only if WDMX mode is set to Transmitter).
 - The transmitter scans for all unlinked receivers for a period of about 5 seconds.
 - If the connection fails, check the position of the receiver.
 - The wireless icon on the receiver display indicates the received signal strength.

Unlinking the transmitter

Follow the procedure below to unlink the transmitter from all receivers connected with the unit.

1. Push MENU button untill you show CONNECT on display, then press ENTER button to confirm.
2. Use UP/DOWN buttons for select Wireless, then press ENTER to confirm.
3. Enable TX UNLINK to ON 8 (please note that TX UNLINK will be available only if WDMX mode is set to Transmitter).
 - All connected receivers will be unlinked.

DMX TO WDMX (TX)

This function enable or disable the transmission throught wireless of the DMX signal from the transmiter side to the receiver.

NOTE: Artnet and sACN have higher priority on DMX if they are connected to transmitter.

OPERATION AS A WIRELESS RECEIVER

ECLCYC050 can be used as wireless receiver connected to a wireless transmitter.

To use ECLCYC050 as wireless receiver, please follow the procedure below:

1. Push MENU button until you show CONNECT on display, then press ENTER button to confirm.
2. Use UP/DOWN buttons for select Wireless, then press ENTER to confirm.
3. Push ENTER button on WDMX ON/OFF function and enable it to ON.
4. Select WDMX mode and set it on Receiver (please note that WDMX mode will be available only if WDMX ON/OFF is set to ON).
5. Enable RX RESET to ON to reset the receiver (please note that RX RESET will be available only if WDMX mode is set to Receiver).
6. On the transmitter, enable TX LINK to ON to link transmitter to the receivers.
7. If the connection is successful and DMX input is available the display on the receiver unit will show the DMX address. If DMX signal is not available, the display will show "No signal" but keeps the transmitter linked.
8. If the connection fails, check the position of the receiver.
9. The wireless icon on the receiver display indicates the received signal strength.

Reset the receiver

Follow the procedure below to reset the receiver.

1. Push MENU button until you show CONNECT on display, then press ENTER button to confirm.
 2. Use UP/DOWN buttons for select Wireless, then press ENTER to confirm.
 3. Enable RX RESET to ON.
- The wireless icon on the receiver display indicates the received signal strength.

WDMX TO DMX (RX)

This function enable or disable the retransmission of the wireless DMX signal received through the DMX port on the receiver side.

8 - CONTROL PANEL

The product has a display and buttons for access to the control panel functions.

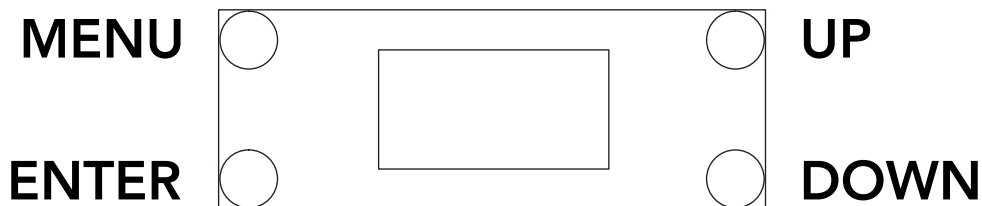


Fig.10

DISPLAY AND BUTTONS LAYOUT

- The product has a display and buttons for access to the control panel functions.
- MENU: Used to access the menu tree or to return a previous menu window.
- UP: Browse upwards through the menu list and increases the numeric value displayed.
- DOWN: Browse downwards through the menu list and decreases the numeric value displayed.
- ENTER: Used to confirm the current menu or confirm the current function value or option within a menu.

9 - MENU STRUCTURE

The following chart describes the MENU tree of the product, the terms shown in **BOLD** indicate the default settings for Standard factory reload.

MENU						
1	CONNECT	DMX Address	Value (001-512)			
		DMX Mode	Theater	1CH	Amber Shift On	
				2CH	Color Temp.	2800K 3200K 3500K 4000K 4500K 5000K 5600K 6000K 6500K
				Manual Color	Red (000÷ 255) Green (000÷ 255) Blue (000÷ 255) White (000÷ 255)	
				4CH1 5CH 6CH1 10CH1 15CH1 17CH		
		Tour	4Ch 6Ch 10Ch 11Ch 15Ch 17Ch 21Ch			
			Film	12Ch 20Ch XY		
		Wireless	WDMX ON/OFF	On-Off	Enable/Disable the wireless card.	
			WDMX mode	Transmitter Receiver	Choose whether to set the wireless card as Transmitter or Receiver. WDMX mode is unlocked only if WDMX ON / OFF is ON.	
			TX link	On-Off	TX link unlock when the unit is set as a transmitter.	
			TX unlink	On-Off	Disconnect the transmitter from all receivers. TX unlink unlocks only if WDMX mode is on transmitter.	
RX reset	On-Off		Total reset of the receiver. RX reset unlocks only if WDMX mode is receiver.			
DMX to WDMX (TX)	On-Off		Enable/Disable the transmission of the dmx from the transmitter to the receiver via wdmx.			
WDMX to DMX (RX)	On-Off		Enable/Disable the retransmission of the DMX from the receiver to the other units connected by cable to the receiver itself.			
Ethernet Settings	Protocol		ArtNet		Choose Net protocol used	
		sACN				
	Artnet Set-tings	IP Address	x.x.x.x	Adjust ArtNet parameters		
		Net	0-127			
		SubNet	0-15			
		SubNetMask	x.x.x.x			
		Universe	0-15			
		Address	1 - 512			
	sACN set-tings	IP Address	x.x.x.x	Adjust sACN parameters		
SubNetMask		x.x.x.x				
Universe		1-256				
Address		1 - 512				

			Ethernet to DMX	On-Off		Enable/Disable the transmission of the dmx from the Net protocol to DMX out.
			Ethernet to WDMX	On-Off		Enable/Disable the retransmission of the DMX from the Net protocol to WDMX (when used as TX)
2	SETUP	Screen	Back Light	On 10 s	20 s 30 s	Select the timing after that display will switch automatically off when unactive.
			Flip Display	No-Yes		Allows you to rotate the display by 180°.
			Key Lock	No-Yes		Lock the buttons on the control panel by a password. Press following combinations (password) in order to access to the user menu : UP, DOWN, UP, DOWN, ENTER.
3	ADVANCED	Full On Mode	HB Studio			HB - High Brightness Mode, delivering the full output on every primary color Studio – Calibrated white output at 6000K, when all primary colors are set to full.
		Dimmer Curve	Linear S-Curve Square Law Inverse Square Law High Res@Low			Set Dimmer curve
		Dimmer Speed	Auto Fast	Medium Slow Off		Set Dimmer speed
		Dimmer End	Snap Off @ End Fade Off @ End			Set Dimmer End behaviour. Snap Off will make fixture snap when dimming out to 0. Fade Off will make fixture fade when dimming out to 0. This selection affects only 004-000 DMX value behaviour.
		Color Calibration	White Balance	Off Adjust	R, G, B, W	Disable the White Calibration at full. Manually adjust color calibration.
			Calibrated			Manufacturer calibration to grant performance and color consistency.
		Led Frequency	600Hz 1200 Hz 2000 Hz	4000 Hz 6000Hz 25kHz		Select PWM frequency.
		DMX Fault	Hold Blackout Standalone			Set behaviour when signal is lost.
		Output Control	Constant Output Dynamic Output			See table at the end of the Menu for Power behaviour
		Factory Reload	No/Yes			Reload fixture with Standard settings.
4	INFORMATION	Fixture Time	0÷9999			View informations about product operating lifetime.
		Disp Version	V1.6			
		NET Version	Vx.x			
		RDM UID	15D00235****			View the UID of the product (RDM control).
5	STAND ALONE	Master/Slave	Master Slave			Allow you to link and operating in synk multiple units without a DMX console. Choose a unit to perform as the Master. This unit must be the first unit in line; Set the successive units to be slave.
		Effect	Effect 1 Effect 2 Effect 3	Effect 4 Effect 5		
		Static	Color Temperature	2800K 3200K 3500K 4000K 4500K	5000K 5600K 6000K 6500K	Select a predefined White CCT output from the list. Adjust Hue and Dimmer (0-255
			Fixed Color	R G B W GB RB RG RGB	RW GW BW RGW RBW GBW RGBW	Select of the following predefined color combination and its Dimmer value.
			Manual Color	Red Green	Blue White	User generated color preset by assigning values to each primary color attribute.

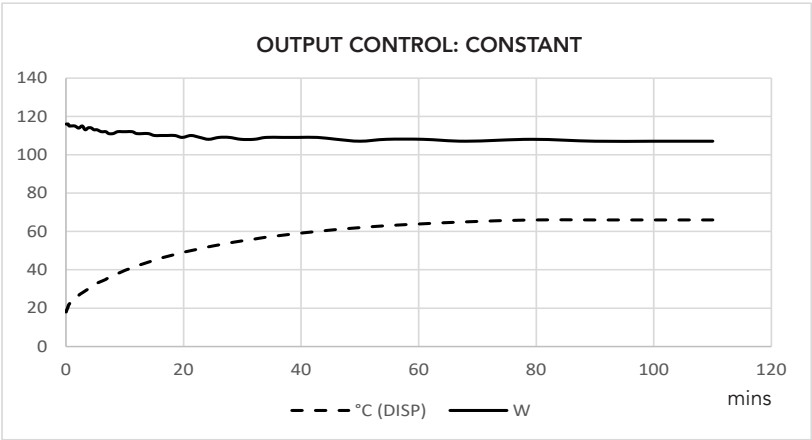
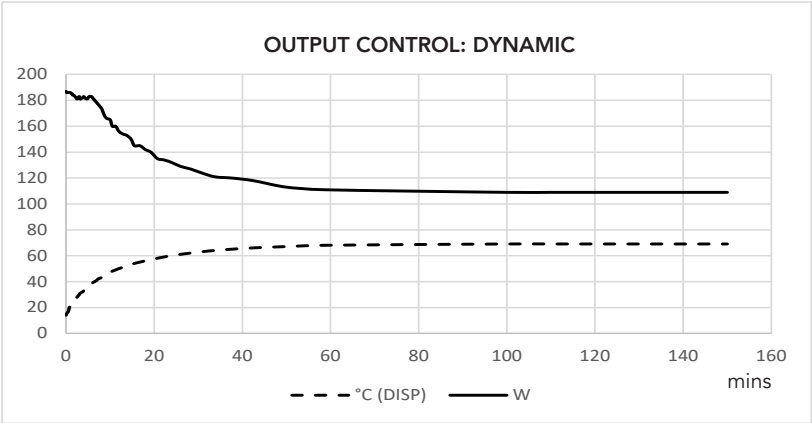
NOTE: If the projector is in Slave mode if the DMX signal is lost, the projector will remain on according to the last received DMX value. If the projector was in STATIC or AUTO mode, if the DMX signal is lost, the projector will return to the previously set STATIC or AUTO.

OUTPUT CONTROL BEHAVIOUR

Output Control Behaviour function manages power available in relation to the temperature of the fixture. Output Control Dynamic allows user to have max power available and then decrease accordingly to temperature. Output Control Static instantly limits max power available to guarantee constant output during the use of the fixture.

Testing condition

Ambient temp: 15° C Full On Mode: HB Calibration: Off RGBW Full



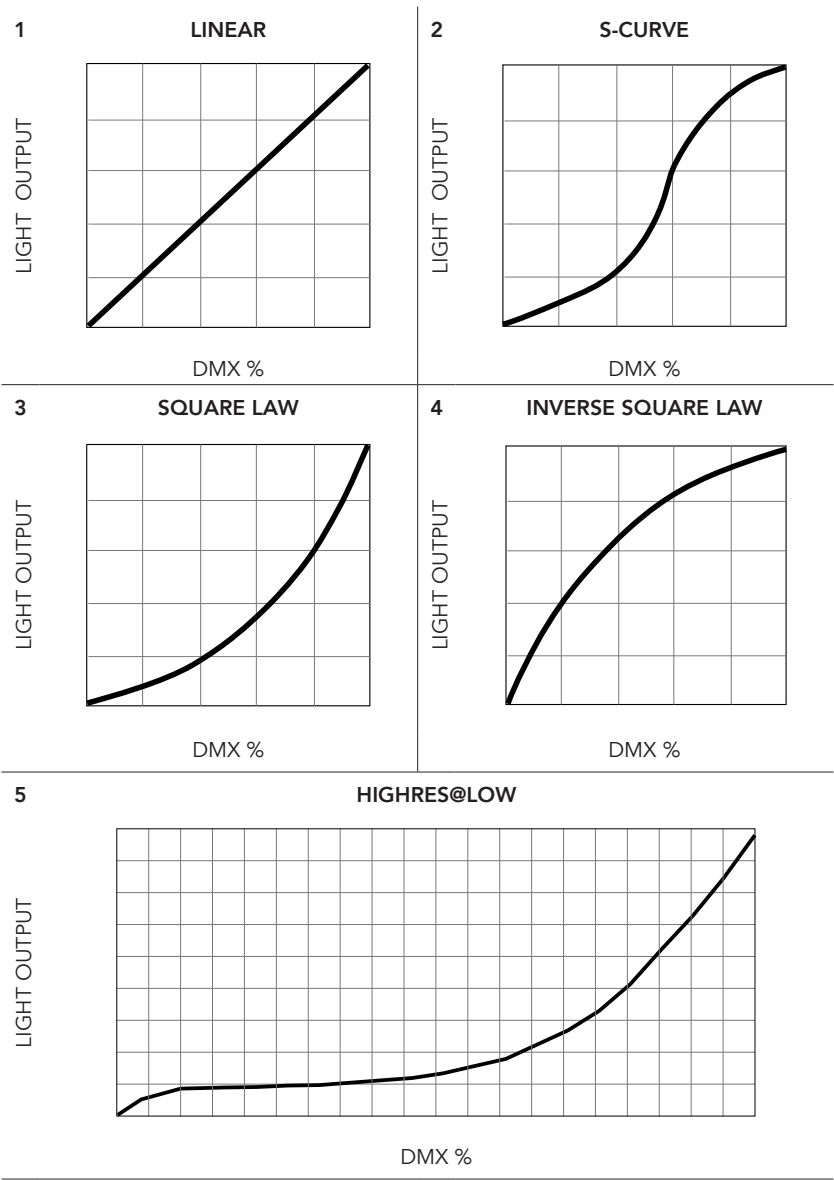
10 - SHORTCUT

KEYS	MODE	DESCRIPTION
UP + DOWN after power on	Flip Display	Directly flip display and knob order without enter inside menu.
ENTER + UP then power on	Bootloader	Force firmware upgrade.

11 - DIMMER CURVES

Five dimming modes are available:

- 1. **LINEAR** - The increase in light intensity appears to be linear as DMX value is increased.
- 2. **S-CURVE** - Light intensity control is finer at low levels and high levels and coarser at medium levels.
- 3. **SQUARE LAW** - Light intensity control is finer at low levels and coarser at high levels.
- 4. **INVERSE SQUARE LAW** - Light intensity control is coarser at low levels and finer at high levels.
- 5. **HIGHRES@LOW** - Very Fine control at low light intensity and coarser at medium and high levels.



12 - RDM FUNCTIONS

The product can communicate using RDM (Remote Device Management) protocol over a DMX512 Networks.

RDM is a bi-directional communications protocol for use in DMX512 control systems, it is the open standard for DMX512 device configuration and status monitoring.

The RDM protocol allows data packets to be inserted into a DMX512 data stream without affecting existing non-RDM equipment. It allows a console or dedicated RDM controller to send commands to and receive messages from specific fixtures.

RDM also works via wireless.

The PIDs in the following tables are supported in the product.

Parameter	PID	GET	SET
DEVICE_LABEL	0x0082	x	x
DMX_START_ADDRESS	0x00F0	x	x
DMX_PERSONALITY	0x00E0	x	x
DMX_PERSONALITY_DESCRIPTION	0x00E1	x	
CURVE	0x0343	x	x
CURVE_DESCRIPTION	0x0344	x	
MODULATION_FREQUENCY	0x0347	x	x
MODULATION_FREQUENCY_DESCRIPTION	0x0348	x	
FACTORY_DEFAULTS	0x0090	x	x
Effects (Effects1-5)	0x8209	x	x
Effects Speed (001-100)	0x8210	x	x
Master/Slave (0:Master 1:Slave)	0x8211	x	x
Full_On_Mode (Full On 0:HB 1:Studio)	0x8217	x	x
Manual Color Red(000-255)	0x82C0	x	x
Manual Color Green(000-255)	0x82C1	x	x
Manual Color Blue(000-255)	0x82C2	x	x
Manual Color White(000-255)	0x82C3	x	x
Fix Color (1-15:R,G,B,W...)	0x82BE	x	x
White Preset (1-9:2800K,3200K,3500K...)	0x82BF	x	x

13 - DMX CHARTS

THEATRE

CH	1 Ch	2 Ch	4 Ch "1"	5 Ch "1"	6 Ch	10 Ch	15 Ch	17 Ch	21 Ch
1	DIMMER	DIMMER	DIMMER	DIMMER	DIMMER	DIMMER	DIMMER	DIMMER	DIMMER
2		DIMMER SPEED	CCT	CCT	CCT	RED	DIMMER FINE	DIMMER FINE	DIMMER FINE
3			HUE	HUE	HUE	GREEN	RED	STROBE	STROBE
4			DIMMER SPEED	STROBE	STROBE	BLUE	RED FINE	CCT	CCT
5				DIMMER SPEED	COLOR MACRO	WHITE	GREEN	HUE	HUE
6					DIMMER SPEED	CCT	GREEN FINE	XFADE FROM CCT TO COLOR	XFADE FROM CCT TO COLOR
7						HUE	BLUE	RED	RED
8						STROBE	BLUE FINE	RED FINE	RED FINE
9						COLOR MACRO	WHITE	GREEN	GREEN
10						DIMMER SPEED	WHITE FINE	GREEN FINE	GREEN FINE
11							CCT	BLUE	BLUE
12							HUE	BLUE FINE	BLUE FINE
13							STROBE	WHITE	WHITE
14							COLOR MACRO	WHITE FINE	WHITE FINE
15							DIMMER SPEED	COLOR MACRO	COLOR MACRO
16								CTO ON COLORS	CTO ON COLORS
17								DIMMER SPEED	DIMMER SPEED
18									FX SELECTION
19									FX SPEED
20									FX FADE
21									CONTROL

1 Ch	2 Ch	4 Ch "1"	5 Ch	6 Ch "1"	10 Ch "1"	15 Ch "1"	17 Ch	21 Ch	FUNCTION	DMX Value	Default
1	1	1	1	1	1	1	1	1	DIMMER 0÷100%	000 ÷ 255	000
						2	2	2	DIMMER FINE 0÷100%	000 ÷ 255	000
							3	3	STROBE No Function (shutter open) Strobe effect slow to fast No Function (shutter open) Random strobe effect slow to fast No Function (shutter open)	000 ÷ 030 031 ÷ 100 101 ÷ 130 131 ÷ 200 201 ÷ 255	255
							5	5	HUE 25 to 0 0 0 to +25	000 ÷ 126 127 ÷ 127 128 ÷ 255	127
					2	3	7	7	RED 0÷100%	000 ÷ 255	000
						4	8	8	RED FINE 0÷100%	000 ÷ 255	000
					3	5	9	9	GREEN 0÷100%	000 ÷ 255	000
						6	10	10	GREEN FINE 0÷100%	000 ÷ 255	000
					4	7	11	11	BLUE 0÷100%	000 ÷ 255	000
						8	12	12	BLUE FINE 0÷100%	000 ÷ 255	000
					5	9	13	13	WHITE 0÷100%	000 ÷ 255	000
						10	14	14	WHITE FINE 0÷100%	000 ÷ 255	000
		2	2	2			4	4	CCT 2800K - 3200K 3200K - 3500K 3500K - 4000K 4000K - 4500K 4500K - 5000K 5000K - 5600K 5600K - 6000K 6000K - 6500K	000 ÷ 031 032 ÷ 063 064 ÷ 095 096 ÷ 127 128 ÷ 159 160 ÷ 191 192 ÷ 223 224 ÷ 255	000
					6	11			CCT 2800K-3200K 3200K-3500K 3500K-4000K 4000K-4500K 4500K-5000K 5000K-5600K 5600K-6000K 6000K-6500K Color Mix	000 ÷ 030 031 ÷ 060 061 ÷ 090 091 ÷ 120 121 ÷ 150 151 ÷ 180 181 ÷ 210 211 ÷ 240 241 ÷ 255	000
		3	3	3	7	12			HUE 0 -25°÷25°	000 ÷ 000 001 ÷ 255	000
							6	6	XFADE FROM CCT TO COLOR 0÷100%	000 ÷ 255	000
			4	4	8	13			STROBE No Function Strobe Slow to Fast	000 ÷ 010 011 ÷ 255	000
				5	9	14	15		COLOR MACRO No Function Amber Shift on Color Macro	000 ÷ 002 003 ÷ 005 006 ÷ 255	000
								15	COLOR MACRO Please check "COLOR MACRO 21CH" table for values	---	---

1 Ch	2 Ch	4 Ch "1"	5 Ch	6 Ch "1"	10 Ch "1"	15 Ch "1"	17 Ch	21 Ch	FUNCTION	DMX Value	Default
							16	16	CTO ON COLORS 0÷100%	000 ÷ 255	000
	2	4	5	6	10	15	17	17	DIMMER SPEED MODE Preset dimmer speed from display menu Dimmer speed mode off Dimmer speed mode1 (fast speed) Dimmer speed mode2 (middle speed) Dimmer speed mode3 (slow speed)	000 ÷ 051 052 ÷ 101 102 ÷ 152 153 ÷ 203 204 ÷ 255	000
								18	FX SELECTION No Function Effect 1 Effect 2 Effect 3 Effect 4 Effect 5 Candle Cop Car1 Cop Car2 Cop Car3 Fire Fireworks Paparazzi Television Party Clouds Club Color Chase Strobe Lighting Explosion Fluorescent Process Pulsing Welding	000 ÷ 010 011 ÷ 020 021 ÷ 030 031 ÷ 040 041 ÷ 050 051 ÷ 060 061 ÷ 070 071 ÷ 080 081 ÷ 090 091 ÷ 100 101 ÷ 110 111 ÷ 120 121 ÷ 130 131 ÷ 140 141 ÷ 150 151 ÷ 160 161 ÷ 170 171 ÷ 180 181 ÷ 190 191 ÷ 200 201 ÷ 210 211 ÷ 220 221 ÷ 230 231 ÷ 240 241 ÷ 255	000
								19	FX SPEED 0÷100%	000 ÷ 255	000
								20	FX FADE 0÷100%	000 ÷ 255	000
								21	CONTROL CHANNEL No Function RESERVED LED FREQUENCY 600HZ LED FREQUENCY 1200HZ LED FREQUENCY 2000HZ LED FREQUENCY 4000HZ LED FREQUENCY 6000HZ LED FREQUENCY 25KHZ RESERVED DIMMER SPEED AUTO DIMMER SPEED FAST DIMMER SPEED MEDIUM DIMMER SPEED SLOW DIMMER CURVE LINEAR DIMMER CURVE S-CURVE DIMMER CURVE SQUARE LAW DIMMER CURVE INV. SQUARE LAW DIMMER CURVE HIGH RES @LOW DIMMER END Snap Off @ End DIMMER END Fade Off @ End OUTPUT CONTROL Dynamic Output OUTPUT CONTROL Constant Output DIMMER SPEED OFF DMX FAULT HOLD DMX FAULT BLACKOUT DMX FAULT STANDALONE SPEKTRA CALIBRATION ON SPEKTRA CALIBRATION OFF RESERVED RESET ALL CHANNELS CONTROLLED	000 ÷ 001 002 ÷ 011 012 ÷ 013 014 ÷ 015 016 ÷ 017 018 ÷ 019 020 ÷ 021 022 ÷ 023 024 ÷ 035 036 ÷ 037 038 ÷ 039 040 ÷ 041 042 ÷ 043 044 ÷ 045 046 ÷ 047 048 ÷ 049 050 ÷ 051 052 ÷ 053 054 ÷ 055 056 ÷ 057 058 ÷ 059 060 ÷ 061 062 ÷ 063 064 ÷ 065 066 ÷ 067 068 ÷ 069 070 ÷ 071 072 ÷ 073 074 ÷ 075 076 ÷ 253 254 ÷ 255	000

COLOR MACRO 21CH			
Open	000 ÷ 001	Dark Yellow Green	090 ÷ 091
Red	002 ÷ 003	Just Blue	092 ÷ 093
Green	004 ÷ 005	Sky Blue	094 ÷ 095
Blue	006 ÷ 007	Lavender	096 ÷ 097
Cyan	008 ÷ 009	Light Lavender	098 ÷ 099
Magenta	010 ÷ 011	Pink Carnation	100 ÷ 101
Yellow	012 ÷ 013	Medium Pink	102 ÷ 103
Dirty White	014 ÷ 015	Light Pink	104 ÷ 105
Alice Blue	016 ÷ 017	Sunset Red	106 ÷ 107
Congo Blue	018 ÷ 019	Dark Amber	108 ÷ 109
Dark Steel Blue	020 ÷ 021	Gold Amber	110 ÷ 111
Deep Lavender	022 ÷ 023	Medium Amber	112 ÷ 113
Lilac Ting	024 ÷ 025	Fire	114 ÷ 115
Daylight Blue	026 ÷ 027	Surprise Peach	116 ÷ 117
Flame Red	028 ÷ 029	Straw Tint	118 ÷ 119
Bastard Amber	030 ÷ 031	Medium Yellow	120 ÷ 121
Deep Orange	032 ÷ 033	Lee Minus Green	122 ÷ 123
Pale Gold	034 ÷ 035	Pale Gold	124 ÷ 125
Apricot	036 ÷ 037	Orange	126 ÷ 127
Bright Blue	038 ÷ 039	Deep Straw	128 ÷ 129
Primary Green	040 ÷ 041	Rose Purple	130 ÷ 131
Special Lavender	042 ÷ 043	Deep Purple	132 ÷ 133
Pale Lavender	044 ÷ 045	Soft Green	134 ÷ 135
Deep Golden Amber	046 ÷ 047	Reserved	136 ÷ 211
Medium Blue	048 ÷ 049	2800K	212 ÷ 213
Bright Pink	050 ÷ 051	3000K	214 ÷ 215
Mauve	052 ÷ 053	3200K	216 ÷ 217
Dark Green	054 ÷ 055	3400K	218 ÷ 219
Lee Green	056 ÷ 057	3600K	220 ÷ 221
Dark Blue	058 ÷ 059	3800K	222 ÷ 223
Light Blue	060 ÷ 061	4000K	224 ÷ 225
Steel Blue	062 ÷ 063	4200K	226 ÷ 227
Medium Blue-Green	064 ÷ 065	4400K	228 ÷ 229
Peacock Blue	066 ÷ 067	4600K	230 ÷ 231
Magenta	068 ÷ 069	4800K	232 ÷ 233
Dark Pink	070 ÷ 071	5000K	234 ÷ 235
Middle Rose	072 ÷ 073	5200K	236 ÷ 237
Light Salmon	074 ÷ 075	5400K	238 ÷ 239
English Rose	076 ÷ 077	5600K	240 ÷ 241
Light Rose	078 ÷ 079	6000K	242 ÷ 243
Orange	080 ÷ 081	6500K	244 ÷ 245
Deep Amber	082 ÷ 083	7000K	246 ÷ 247
Straw	084 ÷ 085	8000K	248 ÷ 249
Light Amber	086 ÷ 087	9000K	250 ÷ 251
Spring Yellow	088 ÷ 089	10000K	252 ÷ 253
		Full On	254 ÷ 255

TOUR

Channel	4 Ch "2"	6 Ch "2"	10 Ch "2"	15 Ch "2"
1	RED	DIMMER	DIMMER	DIMMER
2	GREEN	RED	RED	DIMMER FINE
3	BLUE	GREEN	GREEN	RED
4	WHITE	BLUE	BLUE	RED FINE
5		WHITE	WHITE	GREEN
6		STROBE	STROBE	GREEN FINE
7			COLOR TEMPERATURE	BLUE
8			AUTO PROGRAM	BLUE FINE
9			AUTO SPEED	WHITE
10			DIMMER SPEED	WHITE FINE
11				STROBE
12				COLOR TEMPERATURE
13				AUTO PROGRAM
14				AUTO SPEED
15				DIMMER SPEED

TOUR

4 Ch "2"	6 Ch "2"	10 Ch "2"	15 ChB"2"	FUNCTION	DMX Value	Default
	1	1	1	DIMMER 0÷100%	000 ÷ 255	000
			2	DIMMER FINE 0÷100%	000 ÷ 255	000
1	2	2	3	RED 0÷100%	000 ÷ 255	255
			4	RED FINE 0÷100%	000 ÷ 255	255
2	3	3	5	GREEN 0÷100%	000 ÷ 255	255
			6	GREEN FINE 0÷100%	000 ÷ 255	255
3	4	4	7	BLUE 0÷100%	000 ÷ 255	255
			8	BLUE FINE 0÷100%	000 ÷ 255	255
4	5	5	9	WHITE 0÷100%	000 ÷ 255	255
			10	WHITE FINE 0÷100%	000 ÷ 255	000
	6	6	11	STROBE No Function Strobe Slow to Fast	000 ÷ 010 011 ÷ 255	255
		7	12	COLOR TEMPERATURE Color Mix 2800K 3200K 3500K 4000K 4500K 5000K 5600K 6000K 6500K Color Mix	000 ÷ 005 006 ÷ 030 031 ÷ 055 056 ÷ 080 081 ÷ 105 106 ÷ 130 131 ÷ 155 156 ÷ 180 181 ÷ 205 206 ÷ 230 231 ÷ 255	000
		8	13	AUTO PROGRAMS No Function Auto Program 1 Auto Program 2 Auto Program 3 Auto Program 4 Auto Program 5 (Auto Program1-4)	000 ÷ 010 011 ÷ 060 061 ÷ 110 111 ÷ 160 161 ÷ 210 211 ÷ 255	
		9	14	AUTO SPEED Auto speed slow to fast	000 ÷ 255	
		10	15	DIMMER SPEED MODE Preset dimmer speed from display menu Dimmer speed mode off Dimmer speed mode1 (fast speed) Dimmer speed mode2 (middle speed) Dimmer speed mode3 (slow speed)	000 ÷ 051 052 ÷ 101 102 ÷ 152 153 ÷ 203 204 ÷ 255	

FILM

Ch	12Ch	20Ch	XY
1	DIMMER	DIMMER	DIMMER
2	CCT	DIMMER FINE	DIMMER FINE
3	HUE	CCT	STROBE
4	CROSSFADE FROM CCT TO COLOR	CCT FINE	CCT
5	RED	HUE	TINT
6	GREEN	HUE FINE	X 1
7	BLUE	CROSSFADE FROM CCT TO COLOR	X 1 FINE
8	WHITE	CROSSFADE FROM CCT TO COLOR FINE	Y 1
9	RESERVED	RED	Y 1 FINE
10	COLOR MACRO	RED FINE	CROSSFADE FROM LAYER 1 TO LAYER 2
11	STROBE	GREEN	X 2
12	CONTROL	GREEN FINE	X 2 FINE
13		BLUE	Y 2
14		BLUE FINE	Y 2 FINE
15		WHITE	COLOR MACRO
16		WHITE FINE	CTO ON COLORS
17		RESERVED	CONTROL
18		COLOR MACRO	
19		STROBE	
20		CONTROL	

FILM
12Ch and 20Ch

12Ch	20Ch	FUNCTION	DMX Value	Default
1	1	DIMMER 0÷100%	000 ÷ 255	000
	2	DIMMER FINE	000 ÷ 255	000
2	3	CCT 2800K - 3000K 3000K - 3200K 3200K - 3400K 3400K - 3600K 3600K - 3800K 3800K - 4000K 4000K - 4200K 4200K - 4400K 4400K - 4600K 4600K - 4800K 4800K - 5000K 5000K - 5200K 5200K - 5400K 5400K - 5600K 5600K - 5800K 5800K - 6000K 6000K - 6200K 6200K - 6400K 6400K - 6600K 6600K - 6800K 6800K - 7000K 7000K - 7200K 7200K - 7400K 7400K - 7600K 7600K - 7800K 7800K - 8000K 8000K - 8200K 8200K - 8400K 8400K - 8600K 8600K - 8800K 8800K - 9000K 9000K - 9200K 9200K - 9400K 9400K - 9600K 9600K - 9800K 9800K - 10000K	000 ÷ 007 007 ÷ 014 014 ÷ 021 021 ÷ 028 028 ÷ 035 035 ÷ 042 042 ÷ 049 049 ÷ 056 056 ÷ 063 063 ÷ 070 070 ÷ 077 077 ÷ 084 084 ÷ 091 091 ÷ 098 098 ÷ 105 105 ÷ 112 112 ÷ 119 119 ÷ 126 126 ÷ 133 133 ÷ 140 140 ÷ 147 147 ÷ 154 154 ÷ 161 161 ÷ 168 168 ÷ 175 175 ÷ 182 182 ÷ 189 189 ÷ 196 196 ÷ 203 203 ÷ 210 210 ÷ 217 217 ÷ 224 224 ÷ 231 231 ÷ 238 238 ÷ 245 245 ÷ 255	000
	4	CCT FINE	000 ÷ 255	000
3	5	HUE Neutral / no effect Full minus green -99% --> -1% Neutral / no effect 1% --> 99% Full plus green	000 ÷ 010 011 ÷ 020 021 ÷ 119 120 ÷ 145 146 ÷ 244 245 ÷ 255	000
	6	HUE FINE	000 ÷ 255	000
4	7	CROSSFADE FROM CCT TO COLOR 0÷100%	000 ÷ 255	000
	8	CROSSFADE FROM CCT TO COLOR FINE	000 ÷ 255	000
5	9	RED 0÷100%	000 ÷ 255	000
	10	RED FINE	000 ÷ 255	000
6	11	GREEN 0÷100%	000 ÷ 255	000
	12	GREEN FINE	000 ÷ 255	000
7	13	BLUE 0÷100%	000 ÷ 255	000
	14	BLUE FINE	000 ÷ 255	000
8	15	WHITE 0÷100%	000 ÷ 255	000
	16	WHITE FINE	000 ÷ 255	000
9	17	RESERVED	000 ÷ 255	000

12Ch	20Ch	FUNCTION	DMX Value	Default
10	18	COLOR MACRO	000 ÷ 001	000
		Open	002 ÷ 003	
		Red	004 ÷ 005	
		Green	006 ÷ 007	
		Blue	008 ÷ 009	
		Cyan	010 ÷ 011	
		Magenta	012 ÷ 013	
		Yellow	014 ÷ 015	
		Dirty White	016 ÷ 017	
		Alice Blue	018 ÷ 019	
		Congo Blue	020 ÷ 021	
		Dark Steel Blue	022 ÷ 023	
		Deep Lavender	024 ÷ 025	
		Lilac Ting	026 ÷ 027	
		Daylight Blue	028 ÷ 029	
		Flame Red	030 ÷ 031	
		Bastard Amber	032 ÷ 033	
		Deep Orange	034 ÷ 035	
		Pale Gold	036 ÷ 037	
		Apricot	038 ÷ 039	
		Bright Blue	040 ÷ 041	
		Primary Green	042 ÷ 043	
		Special Lavender	044 ÷ 045	
		Pale Lavender	046 ÷ 047	
		Deep Golden Amber	048 ÷ 049	
		Medium Blue	050 ÷ 051	
		Bright Pink	052 ÷ 053	
		Mauve	054 ÷ 055	
		Dark Green	056 ÷ 057	
		Lee Green	058 ÷ 059	
		Dark Blue	060 ÷ 061	
		Light Blue	062 ÷ 063	
		Steel Blue	064 ÷ 065	
		Medium Blue-Green	066 ÷ 067	
		Peacock Blue	068 ÷ 069	
		Magenta	070 ÷ 071	
		Dark Pink	072 ÷ 073	
		Middle Rose	074 ÷ 075	
		Light Salmon	076 ÷ 077	
		English Rose	078 ÷ 079	
		Light Rose	080 ÷ 081	
		Orange	082 ÷ 083	
		Deep Amber	084 ÷ 085	
		Straw	086 ÷ 087	
		Light Amber	088 ÷ 089	
		Spring Yellow	090 ÷ 091	
		Dark Yellow Green	092 ÷ 093	
		Just Blue	094 ÷ 095	
		Sky Blue	096 ÷ 097	
		Lavender	098 ÷ 099	
		Light Lavender	100 ÷ 101	
		Pink Carnation	102 ÷ 103	
		Medium Pink	104 ÷ 105	
		Light Pink	106 ÷ 107	
		Sunset Red	108 ÷ 109	
		Dark Amber	110 ÷ 111	
		Gold Amber	112 ÷ 113	
		Medium Amber	114 ÷ 115	
		Fire	116 ÷ 117	
		Surprise Peach	118 ÷ 119	
		Straw Tint	120 ÷ 121	
		Medium Yellow	122 ÷ 123	
		Lee Minus Green	124 ÷ 125	
		Pale Gold	126 ÷ 127	
		Orange	128 ÷ 129	
		Deep Straw	130 ÷ 131	
		Rose Purple	132 ÷ 133	
		Deep Purple	134 ÷ 135	
		Soft Green Reserved	136 ÷ 211	
		2800K	212 ÷ 213	
		3000K	214 ÷ 215	
		3200K	216 ÷ 217	
		3400K	218 ÷ 219	
		3600K	220 ÷ 221	

12Ch	20Ch	FUNCTION	DMX Value	Default
10	18	COLOR MACRO		
		3800K	222 ÷ 223	000
		4000K	224 ÷ 225	
		4200K	226 ÷ 227	
		4400K	228 ÷ 229	
		4600K	230 ÷ 231	
		4800K	232 ÷ 233	
		5000K	234 ÷ 235	
		5200K	236 ÷ 237	
		5400K	238 ÷ 239	
		5600K	240 ÷ 241	
		6000K	242 ÷ 243	
		6500K	244 ÷ 245	
		7000K	246 ÷ 247	
		8000K	248 ÷ 249	
		9000K	250 ÷ 251	
		10000K	252 ÷ 253	
		Full On	254 ÷ 255	
11	19	STROBE		
		Open	000 ÷ 019	000
		1 flash/s -> 25 flashes/s	020 ÷ 255	
12	20	CONTROL CHANNEL		
		No Function	000 ÷ 001	000
		RESERVED	002 ÷ 011	
		LED FREQUENCY 600HZ	012 ÷ 013	
		LED FREQUENCY 1200HZ	014 ÷ 015	
		LED FREQUENCY 2000HZ	016 ÷ 017	
		LED FREQUENCY 4000HZ	018 ÷ 019	
		LED FREQUENCY 6000HZ	020 ÷ 021	
		LED FREQUENCY 25KHZ	022 ÷ 023	
		RESERVED	024 ÷ 035	
		DIMMER SPEED AUTO	036 ÷ 037	
		DIMMER SPEED FAST	038 ÷ 039	
		DIMMER SPEED MEDIUM	040 ÷ 041	
		DIMMER SPEED SLOW	042 ÷ 043	
		DIMMER CURVE LINEAR	044 ÷ 045	
		DIMMER CURVE S-CURVE	046 ÷ 047	
		DIMMER CURVE SQUARE LAW	048 ÷ 049	
		DIMMER CURVE INV. SQUARE LAW	050 ÷ 051	
		DIMMER CURVE HIGH RES @LOW	052 ÷ 053	
		DIMMER END Snap Off @ End	054 ÷ 055	
		DIMMER END Fade Off @ End	056 ÷ 057	
		OUTPUT CONTROL Dynamic Output	058 ÷ 059	
		OUTPUT CONTROL Constant Output	060 ÷ 061	
		DIMMER SPEED OFF	062 ÷ 063	
		DMX FAULT HOLD	064 ÷ 065	
		DMX FAULT BLACKOUT	066 ÷ 067	
		DMX FAULT STANDALONE	068 ÷ 069	
		SPEKTRA CALIBRATION ON	070 ÷ 071	
		SPEKTRA CALIBRATION PURE COLORS	072 ÷ 073	
		SPEKTRA CALIBRATION OFF	074 ÷ 075	
		RESERVED	076 ÷ 253	
		RESET ALL CHANNELS CONTROLLED	254 ÷ 255	

FILM
XY Mode

XY	FUNCTION	DMX Value	Default
1	DIMMER 0÷100%	000 ÷ 255	000
2	DIMMER FINE	000 ÷ 255	000
3	STROBE Closed Strobe slow to fast Open Random slow to fast Open	000 ÷ 030 031 ÷ 100 101 ÷ 130 131 ÷ 200 201 ÷ 255	255
4	CCT 2800K - 3000K 3000K - 3200K 3200K - 3400K 3400K - 3600K 3600K - 3800K 3800K - 4000K 4000K - 4200K 4200K - 4400K 4400K - 4600K 4600K - 4800K 4800K - 5000K 5000K - 5200K 5200K - 5400K 5400K - 5600K 5600K - 5800K 5800K - 6000K 6000K - 6200K 6200K - 6400K 6400K - 6600K 6600K - 6800K 6800K - 7000K 7000K - 7200K 7200K - 7400K 7400K - 7600K 7600K - 7800K 7800K - 8000K 8000K - 8200K 8200K - 8400K 8400K - 8600K 8600K - 8800K 8800K - 9000K 9000K - 9200K 9200K - 9400K 9400K - 9600K 9600K - 9800K 9800K - 10000K	000 ÷ 007 007 ÷ 014 014 ÷ 021 021 ÷ 028 028 ÷ 035 035 ÷ 042 042 ÷ 049 049 ÷ 056 056 ÷ 063 063 ÷ 070 070 ÷ 077 077 ÷ 084 084 ÷ 091 091 ÷ 098 098 ÷ 105 105 ÷ 112 112 ÷ 119 119 ÷ 126 126 ÷ 133 133 ÷ 140 140 ÷ 147 147 ÷ 154 154 ÷ 161 161 ÷ 168 168 ÷ 175 175 ÷ 182 182 ÷ 189 189 ÷ 196 196 ÷ 203 203 ÷ 210 210 ÷ 217 217 ÷ 224 224 ÷ 231 231 ÷ 238 238 ÷ 245 245 ÷ 255	000
5	HUE Neutral / no effect Full minus green -99% --> -1% Neutral / no effect 1% --> 99% Full plus green	000 ÷ 010 011 ÷ 020 021 ÷ 119 120 ÷ 145 146 ÷ 244 245 ÷ 255	000
6	X 1 0.00 ÷ 0.85	000 ÷ 255	000
7	X 1 FINE	000 ÷ 255	000
8	Y 1 0.00 ÷ 0.85	000 ÷ 255	000
9	Y 1 FINE	000 ÷ 255	000
10	CROSSFADE FROM LAYER 1 TO LAYER 2 0÷100%	000 ÷ 255	000
11	X 2 0.00 ÷ 0.85	000 ÷ 255	000
12	X 2 FINE	000 ÷ 255	000
13	Y 2 0.00 ÷ 0.85	000 ÷ 255	000

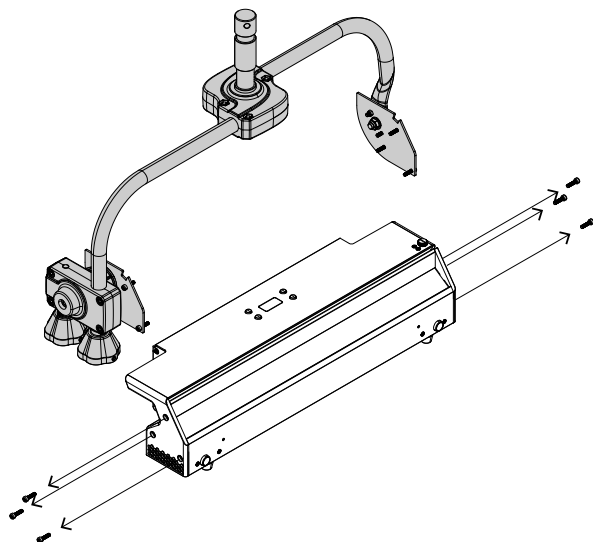
XY	FUNCTION	DMX Value	Default
14	Y 2 FINE	000 ÷ 255	000
15	COLOR MACRO		000
	Open	000 ÷ 001	
	Red	002 ÷ 003	
	Green	004 ÷ 005	
	Blue	006 ÷ 007	
	Cyan	008 ÷ 009	
	Magenta	010 ÷ 011	
	Yellow	012 ÷ 013	
	Dirty White	014 ÷ 015	
	Alice Blue	016 ÷ 017	
	Congo Blue	018 ÷ 019	
	Dark Steel Blue	020 ÷ 021	
	Deep Lavender	022 ÷ 023	
	Lilac Tint	024 ÷ 025	
	Daylight Blue	026 ÷ 027	
	Flame Red	028 ÷ 029	
	Bastard Amber	030 ÷ 031	
	Deep Orange	032 ÷ 033	
	Pale Gold	034 ÷ 035	
	Apricot	036 ÷ 037	
	Bright Blue	038 ÷ 039	
	Primary Green	040 ÷ 041	
	Special Lavender	042 ÷ 043	
	Pale Lavender	044 ÷ 045	
	Deep Golden Amber	046 ÷ 047	
	Medium Blue	048 ÷ 049	
	Bright Pink	050 ÷ 051	
	Mauve	052 ÷ 053	
	Dark Green	054 ÷ 055	
	Lee Green	056 ÷ 057	
	Dark Blue	058 ÷ 059	
	Light Blue	060 ÷ 061	
	Steel Blue	062 ÷ 063	
	Medium Blue-Green	064 ÷ 065	
	Peacock Blue	066 ÷ 067	
	Magenta	068 ÷ 069	
	Dark Pink	070 ÷ 071	
	Middle Rose	072 ÷ 073	
	Light Salmon	074 ÷ 075	
	English Rose	076 ÷ 077	
	Light Rose	078 ÷ 079	
	Orange	080 ÷ 081	
	Deep Amber	082 ÷ 083	
	Straw	084 ÷ 085	
	Light Amber	086 ÷ 087	
	Spring Yellow	088 ÷ 089	
	Dark Yellow Green	090 ÷ 091	
	Just Blue	092 ÷ 093	
	Sky Blue	094 ÷ 095	
	Lavender	096 ÷ 097	
	Light Lavender	098 ÷ 099	
	Pink Carnation	100 ÷ 101	
	Medium Pink	102 ÷ 103	
	Light Pink	104 ÷ 105	
	Sunset Red	106 ÷ 107	
	Dark Amber	108 ÷ 109	
	Gold Amber	110 ÷ 111	
	Medium Amber	112 ÷ 113	
	Fire	114 ÷ 115	
	Surprise Peach	116 ÷ 117	
	Straw Tint	118 ÷ 119	
	Medium Yellow	120 ÷ 121	
	Lee Minus Green	122 ÷ 123	
	Pale Gold	124 ÷ 125	
	Orange	126 ÷ 127	
	Deep Straw	128 ÷ 129	
	Rose Purple	130 ÷ 131	
	Deep Purple	132 ÷ 133	
	Soft Green	134 ÷ 135	
	Reserved	136 ÷ 211	
	2800K	212 ÷ 213	
	3000K	214 ÷ 215	
	3200K	216 ÷ 217	
	3400K	218 ÷ 219	
	3600K	220 ÷ 221	

XY	FUNCTION	DMX Value	Default
15	COLOR MACRO		
	3800K	222 ÷ 223	000
	4000K	224 ÷ 225	
	4200K	226 ÷ 227	
	4400K	228 ÷ 229	
	4600K	230 ÷ 231	
	4800K	232 ÷ 233	
	5000K	234 ÷ 235	
	5200K	236 ÷ 237	
	5400K	238 ÷ 239	
	5600K	240 ÷ 241	
	6000K	242 ÷ 243	
	6500K	244 ÷ 245	
	7000K	246 ÷ 247	
	8000K	248 ÷ 249	
	9000K	250 ÷ 251	
	10000K	252 ÷ 253	
	Full On	254 ÷ 255	
16	CTO ON COLORS 0÷100%	000 ÷ 255	000
17	CONTROL CHANNEL		
	No Function	000 ÷ 001	000
	RESERVED	002 ÷ 011	
	LED FREQUENCY 600HZ	012 ÷ 013	
	LED FREQUENCY 1200HZ	014 ÷ 015	
	LED FREQUENCY 2000HZ	016 ÷ 017	
	LED FREQUENCY 4000HZ	018 ÷ 019	
	LED FREQUENCY 6000HZ	020 ÷ 021	
	LED FREQUENCY 25KHZ	022 ÷ 023	
	RESERVED	024 ÷ 035	
	DIMMER SPEED AUTO	036 ÷ 037	
	DIMMER SPEED FAST	038 ÷ 039	
	DIMMER SPEED MEDIUM	040 ÷ 041	
	DIMMER SPEED SLOW	042 ÷ 043	
	DIMMER CURVE LINEAR	044 ÷ 045	
	DIMMER CURVE S-CURVE	046 ÷ 047	
	DIMMER CURVE SQUARE LAW	048 ÷ 049	
	DIMMER CURVE INV. SQUARE LAW	050 ÷ 051	
	DIMMER CURVE HIGH RES @LOW	052 ÷ 053	
	DIMMER END Snap Off @ End	054 ÷ 055	
	DIMMER END Fade Off @ End	056 ÷ 057	
	OUTPUT CONTROL Dynamic Output	058 ÷ 059	
	OUTPUT CONTROL Constant Output	060 ÷ 061	
	DIMMER SPEED OFF	062 ÷ 063	
	DMX FAULT HOLD	064 ÷ 065	
	DMX FAULT BLACKOUT	066 ÷ 067	
	DMX FAULT STANDALONE	068 ÷ 069	
	SPEKTRA CALIBRATION ON	070 ÷ 071	
	SPEKTRA CALIBRATION PURE COLORS	072 ÷ 073	
	SPEKTRA CALIBRATION OFF	074 ÷ 075	
	RESERVED	076 ÷ 253	
	RESET ALL CHANNELS CONTROLLED	254 ÷ 255	

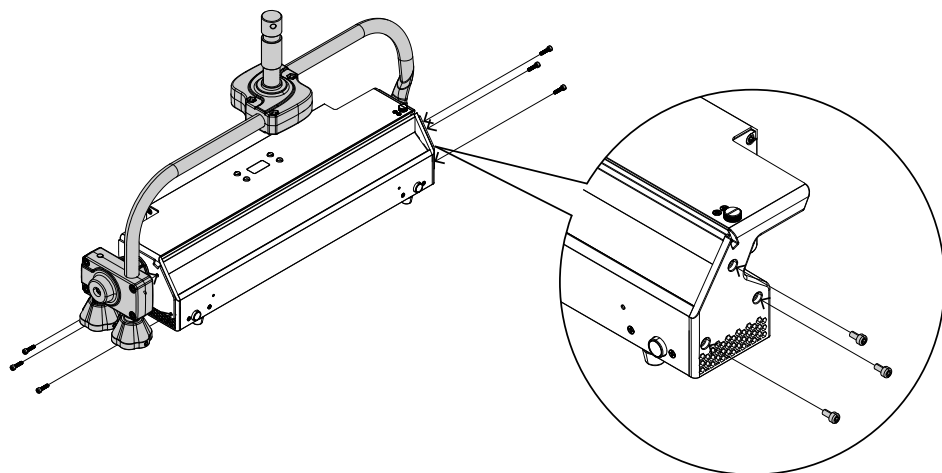
12 - ACCESSORIES INSTALLATION

THE POLE OPERATED YOKE (CODE ECLCYC050PO)

The pole operated yoke bracket is available as accessory and it can be mounted from the users, see the following drawing which shows the process for Yoke replacement.



1. Loosen and remove the marked screws.



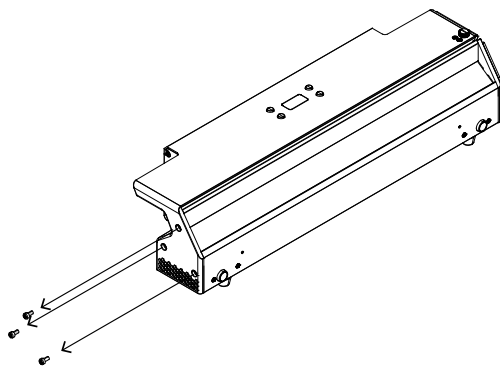
2. Mount the Pole Operated Yoke bracket and tighten the screws.

NOTE: To remove the accessory, reverse the procedure.

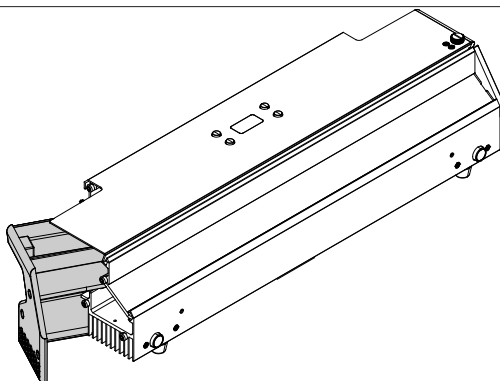
Fig.11

DIFFUSION FILTERS (CODE ECLCYCF)

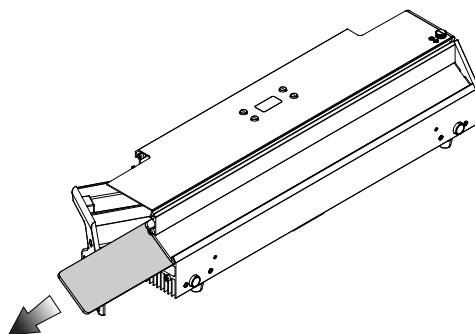
Light diffuser filter are available as optional accessories.



1. Loosen and remove the marked screws.



2. Open the side cover.

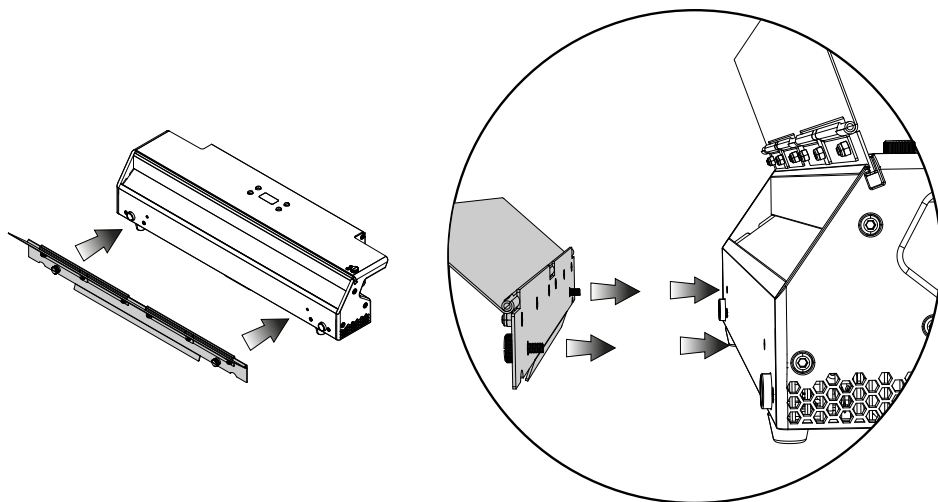


3. Gently remove the filter located under the glass.
4. Insert the desired diffuser filter, always in the same position.
5. Mount the side cover and tighten the screws.

Fig.12

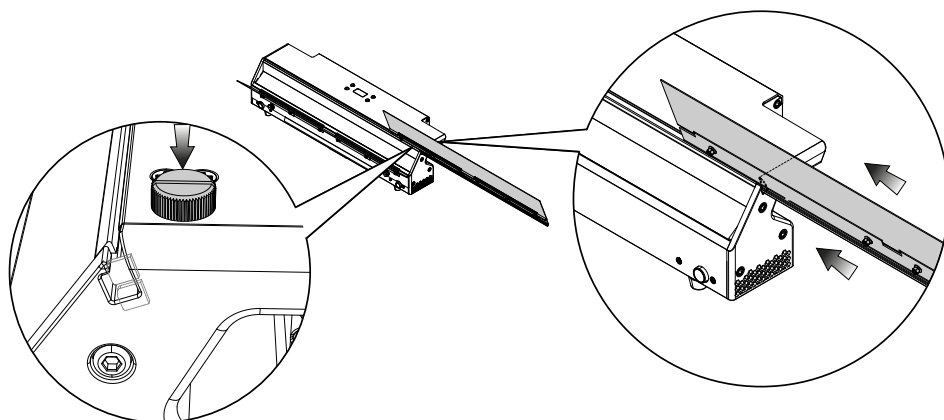
BARN DOOR (CODE ECLCYCBD050)

Upper and lower barndoors with directional flaps to adjust the light beam is available as optional accessory.



1. Mount the lower barndoor fixing the two screws on the hardware into the holes provided on the front housing of the product. Then tighten the screws through the two knobs of the accessory.

NOTE: To remove the accessory, reverse the procedure.



2. To insert the upper door, press the button provided on the top cover to release the lock provided in the slot on the hardware. Then insert the barndoor in the slot.

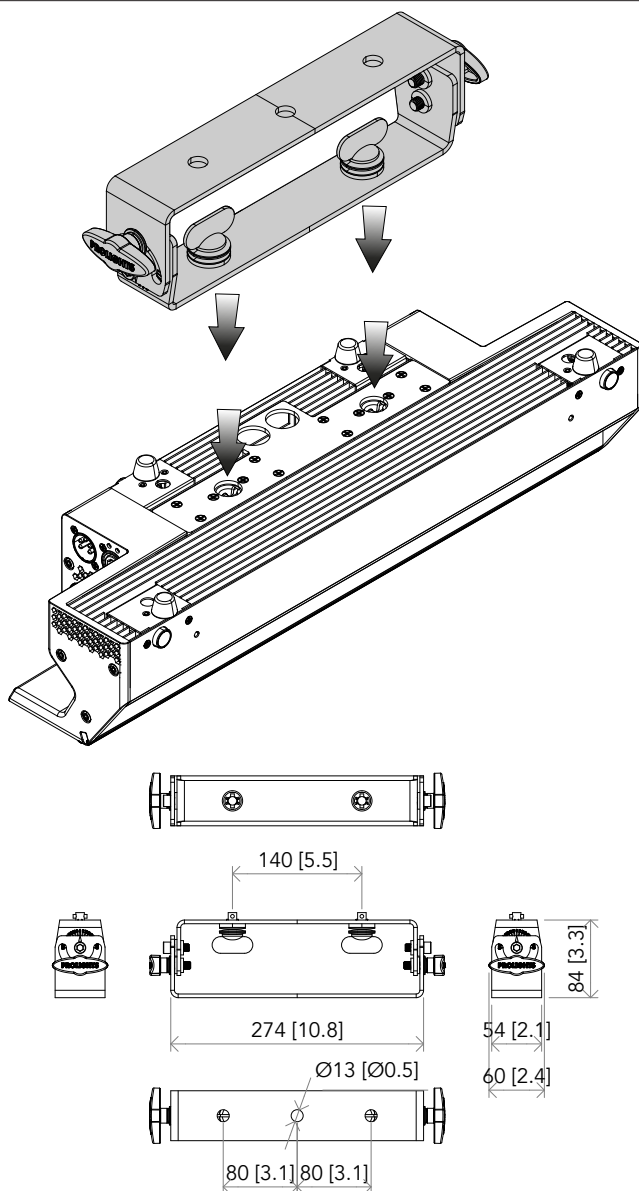
NOTE: to remove the upper barndoor press the button provided on the top cover to release the lock provided in the slot on the hardware.

3. Adjust the angle of the leaves to focus the beam.

Fig.13

HANGING BAR (CODE ECLCYCOHB)

The orientable hanging bar is available as optional accessory.



1. Mount the hanging bar fixing and tightening the Quick-Lock on the hardware into the holes provided on the low housing of the product.
2. Using the knobs to adjust the angle of the product.

Fig. 14

13 - MAINTENANCE

MAINTENANCE AND CLEANING THE PRODUCT

WARNING: Disconnect from the mains before starting any maintenance work

It is recommended to clean the front at regular intervals, from impurities caused by dust, smoke, or other particles to ensure that the light is radiated at maximum brightness.

- For cleaning, disconnect the main plug from the socket. Use a soft, clean cloth moistened with a mild detergent. Then carefully wipe the part dry. For cleaning other housing parts use only a soft, clean cloth. Never use a liquid, it might penetrate the unit and cause damage to it.
- The user must clean the product periodically to maintain optimum performance and cooling. The user may also upload firmware (product software) to the fixture via the DMX signal input port or USB port using firmware and instructions from PROLIGHTS.
- The frequency of such maintenance operations is to be performed according to various factors, such as the amount of the use and the condition of the installation environment (air humidity, presence of dust, salinity, etc.). It is recommended that the product is subject to annual service by a qualified technician for special maintenance involving at least the following procedures:
- General cleaning of internal parts.
- Restoring lubrication of all parts subject to friction, using lubricants specifically supplied by PROLIGHTS.
- General visual check of the internal components, cabling, mechanical parts, etc.
- Electrical, photometric and functional checks; eventual repairs.
- Cleaning the lenses. Only use neutral soap and water to clean the lenses, then dry it carefully with a soft, non-abrasive cloth.

WARNING: the use of alcohol or any other detergent could damage the lenses.

- All other service operations on the product must be carried out by PROLIGHTS, its approved service agents or trained and qualified personnel.
- It is PROLIGHTS policy to apply the strictest possible calibration procedures and use the best quality materials available to ensure optimum performance and the longest possible component lifetimes. However, optical components are subject to wear and tear over the life of the product, resulting in gradual changes in colours over many thousands of hours of use. The extent of wear and tear depends heavily on operating conditions and environment, so it is impossible to specify precisely whether and to what extent performance will be affected. However, you may eventually need to replace optical components if their characteristics are affected by wear and tear after an extended period of use and if you require fixtures to perform within very precise optical and colour parameters.
- Do not apply filters, lenses or other materials on lenses or other optical components. Use only accessories approved by PROLIGHTS.

REPLACING THE FUSE

WARNING: Before replacing the fuse, unplug the product from the mains.

- Remove the old fuse from the housing with a suitable screwdriver (anticlockwise) and replace it with one of the same type and of the same classification (T5 AL 250 V).

VISUAL CHECK OF PRODUCT HOUSING

- The parts of the product cover/housing should be checked for eventual damages and breaking start at least every two months. In addition, especially the parts of the front lens holder have to be checked mechanically (by means of movement by the part) if it is firmly fastened to the fixture. If hint of a crack is found on some plastic part, do not use the product until the damaged part will be replaced.
- Cracks or another damages of the cover/housing parts can be caused by the product transportation or manipulation and also ageing process may influence materials.
- This checking is necessary for both fixed installations and preparing product for renting. Any free moving parts inside of the product, cracked cover/housing or any part of front lens not sitting properly in place need to be immediately replaced.

TROUBLESHOOTING

Problems	Possible causes	Checks and remedies
Product doesn't power ON	<ul style="list-style-type: none"> No power to the product. 	<ul style="list-style-type: none"> Check that power is switched ON and cables are plugged in.
	<ul style="list-style-type: none"> Fuse blown or internal fault. 	<ul style="list-style-type: none"> Check if the Fuse is intact and eventually replace it if necessary. Contact the PROLIGHTS Service or authorized service partner. Do not remove parts and/or covers, or carry out any repairs or service that are not described in this Safety and User Manual unless you have both authorization from PROLIGHTS and the service documentation.
Product reset correctly but does not respond correctly to the controller.	<ul style="list-style-type: none"> Bad signal connection. 	<ul style="list-style-type: none"> Inspect connections and cables. Fix eventual bad connections. Repair or replace damaged cables.
	<ul style="list-style-type: none"> Signal connection not terminated. 	<ul style="list-style-type: none"> Insert DMX termination plug in signal output socket of the last product on the signal line.
	<ul style="list-style-type: none"> Incorrect addressing of the product. 	<ul style="list-style-type: none"> Check the product address and control settings.
	<ul style="list-style-type: none"> One of the product is defective and is corrupting the signal transmission on the signal line 	<ul style="list-style-type: none"> Unplug the XLR in and out connectors and connect them directly together to bypass one product at a time until normal operation is regained. Once found the error, have that fixture serviced by a qualified technician.
Timeout error after fixture reset.	<ul style="list-style-type: none"> One or more hardware components requires mechanical adjustments. 	<ul style="list-style-type: none"> Check product stored error messages for more information. Contact PROLIGHTS Service or an authorized service partner.
Mechanical effect loses position	<ul style="list-style-type: none"> Mechanical hardware require cleaning, adjustment or lubrication. 	<ul style="list-style-type: none"> Check product stored error messages for more information. Contact PROLIGHTS Service or an authorized service partner.
Light output turn OFF Intermittently	<ul style="list-style-type: none"> Fixture is too hot. 	<ul style="list-style-type: none"> Check product stored error messages. Allow product to cool. Clean the product and airflow filters. Reduce ambient temperature.
	<ul style="list-style-type: none"> Hardware failure (temperature sensor, fans, Light source...). 	<ul style="list-style-type: none"> Check product stored error messages for more information. Contact PROLIGHTS Service or an authorized service partner.
General low light intensity	<ul style="list-style-type: none"> Dirty lens assembly. 	<ul style="list-style-type: none"> Clean the fixture regularly.
	<ul style="list-style-type: none"> Dirty or damaged filters. 	<ul style="list-style-type: none"> Install lens assembly properly.

Contact an authorized service center in case of technical problems or not reported in the table can not be resolved by the procedure given in the table.

[illegible]

