



# Photometric Test Report



## **ArcSpot SVW**

IP66 Spot featuring 1'600 lumen with  
7 x 4W Variable White source,  
25° Degree Lens

## CONTENTS

Table of contents	2
Testing process	3
Color preset:	
Full On	4
Warm White	9
Cold White	14
2700K	19
3200K	24
4000K	29
5600K	34
6500K	39

## TESTING PROCESS

Prolights has its own optical testing laboratory in order to provide accurate photometric reports for its lighting products. The testing laboratory contains certain variety of precise lighting measurement systems that ensure an optimal reading of all the characteristic parameters of the lighting devices. All measurements are made at a controlled room temperature of 20°C without any external light sources. This photometric report is obtained through the data measured by a high precision measurement system and analyzed by a dedicate software.

### **Prolights measurement instrument**

Prolights measurement instrument is a complete measurement system for any light source. It's equipped with two-axis goniometer, that enables to measure the full 3D distribution field of the light source. This instrument measures the light intensity, the beam angle and the most significative colors parameters, like color temperature, spectral distribution, CRI, CQS, TM-30 with a very high accuracy rate.

**Please Note:** All measurements are made with light source at operating temperature. Before starting the measurement, the instrument analyzes the process of the light source during the heating phase. The measuring process of all the parameters begins only when the light emission is stable, that is with a variation of less than 0.5% in a 15 minutes time frame.

### **Prolights measurement software**

The software provides user friendly interface for the operator who does the measurements, and it also analyzes and processes all the collected data by the instrument. With this software it is possible to see the measured data in real-time and it is possible to examine all the measured data and graphics afterwards as well. All information is collected in a specific Prolights template, and the software creates also IES and LDT files, which are widely used to transfer the photometric data, and to develop lighting system.

Additionally, the fixtures are rechecked using various hand-held instruments like Sekonic C-700 and Gossen Mavospec Base, this is done to ensure, that the data in the photometric report are as accurate as possible.



Total lumen output:

1595 lm

Peak candela output:

9483 cd

Light quality:

CRI: 93,8

Color temperature:

4306 K

**PRODUCT NAME:**

ARCSPOTS VW

**MEASURAMENT CONDITIONS:**

Beam angle:

25°

Target:

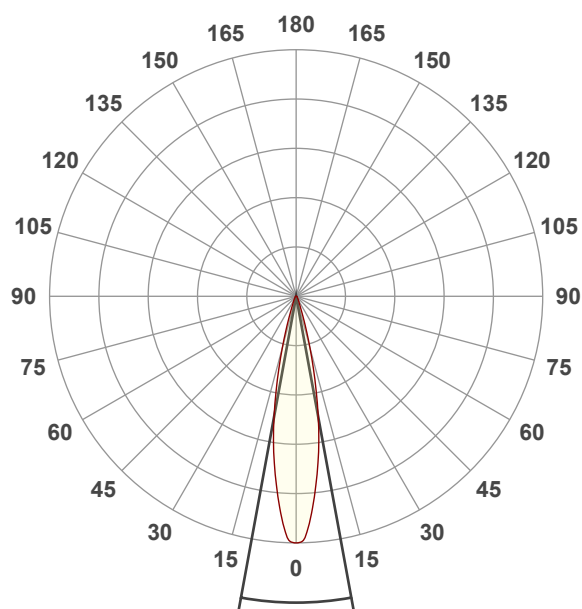
Full On

Operator:

Salvatore Giglio

Date and time:

20/02/2024 13:18:10

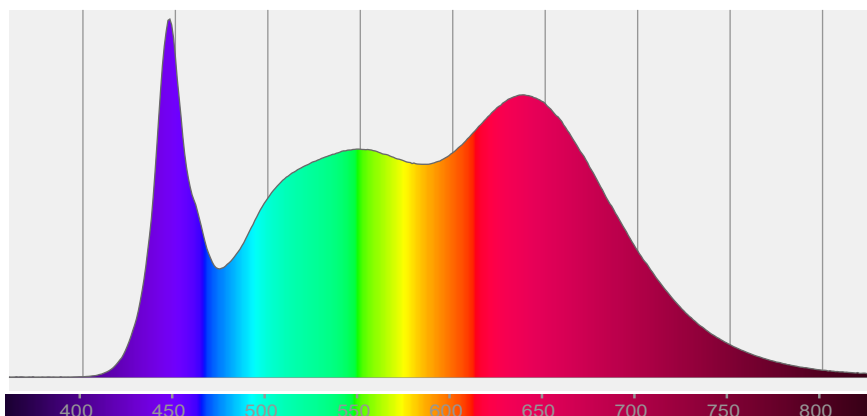


Beam angle 50%: 20,8°

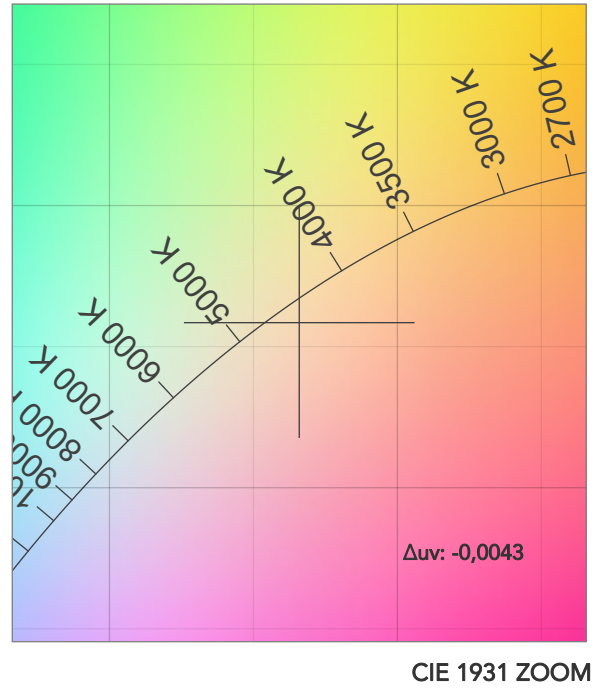
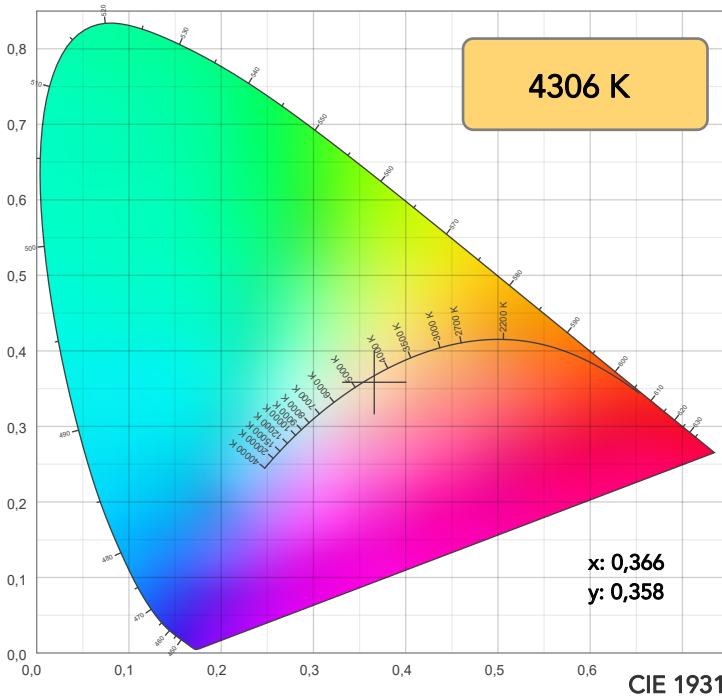
Field angle 10%: 36,3°

Cut off angle 2.5%: 52,9°

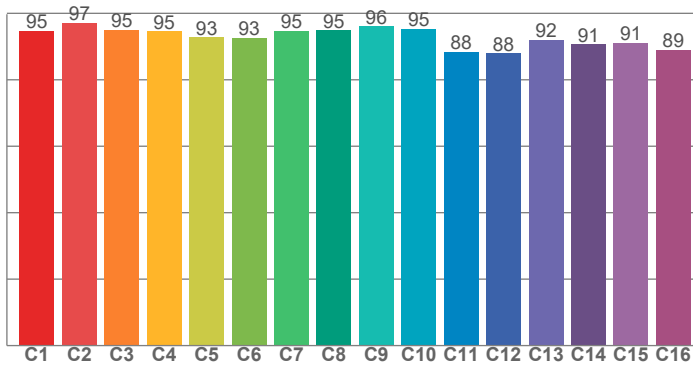
**Spectra**



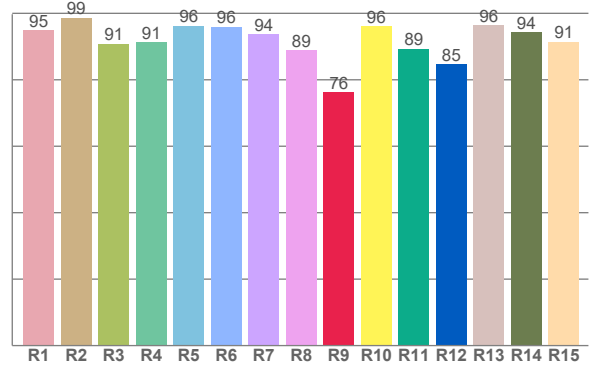
# COLOR DETAILS



TM30: 93,2



CRI: 93,8 (R1-R8)



CRI R values, only R1-R8 are used to calculate final CRI value

R1	R2	R3	R4	R5	R6	R7	R8	R9	R10	R11	R12	R13	R14	R15
94,8	98,6	90,8	91,4	96,3	95,9	93,7	88,8	76,2	96,1	89,4	84,7	96,3	94,2	91,5

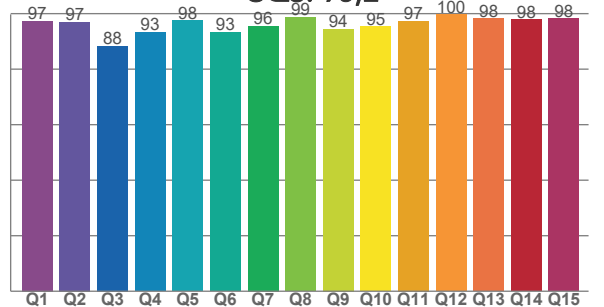
TM30 C values, 16 binned values out of total of 99 C values

C1	C2	C3	C4	C5	C6	C7	C8	C9	C10	C11	C12	C13	C14	C15	C16
94,7	97,2	95,0	94,5	92,7	92,6	94,7	94,9	96,0	95,2	88,4	88,0	92,0	90,7	91,1	89,1

CQS Q values

Q1	Q2	Q3	Q4	Q5	Q6	Q7	Q8	Q9	Q10	Q11	Q12	Q13	Q14	Q15
97,4	96,9	88,3	93,3	97,6	93,3	95,6	98,7	94,4	95,3	97,4	99,7	98,2	97,9	98,2

CQS: 95,2



## COLOR PARAMETERS

Color temperature	Color rendering index	Red component	Color fidelity	Color gamut	Color quality scale	Television lighting index	Color coordinate cie 1931	Color coordinate cie 1931	Color deviation from black body
CCT	CRI	CRI R9	TM30 Rf	TM30 Rg	CQS	TLCI	x	y	Δuv
4306 K	93,8	76,2	93,2	105,5	95,2	97	0,366	0,358	-0,0043

## TM30 DETAILS

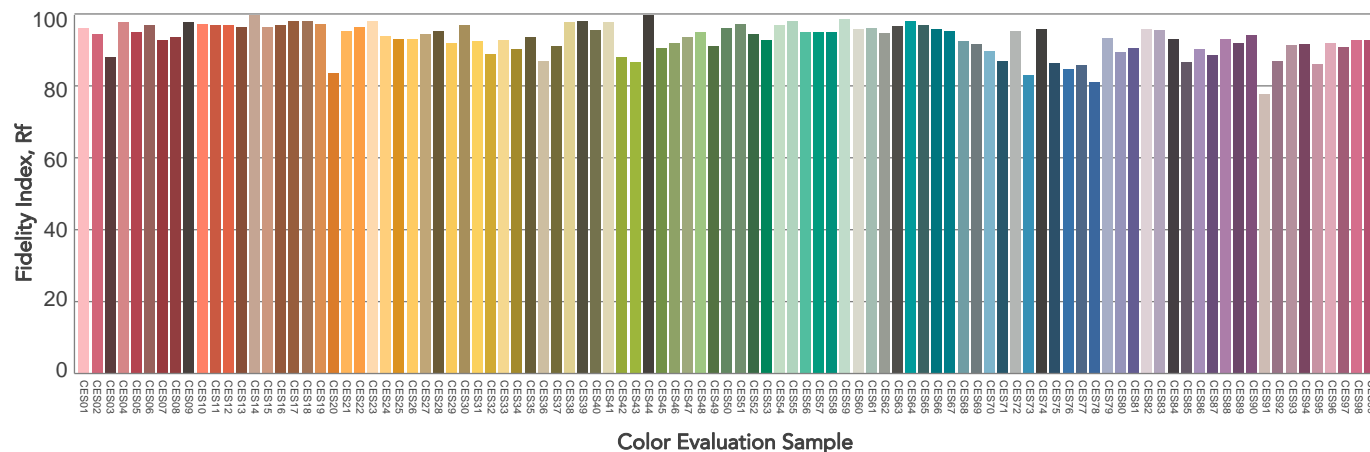
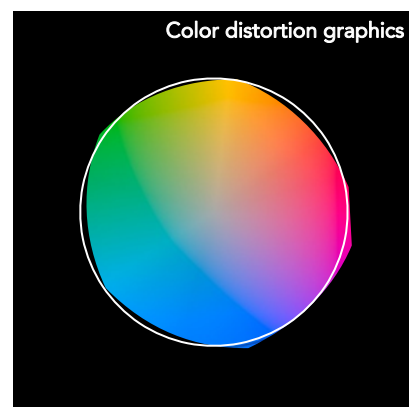
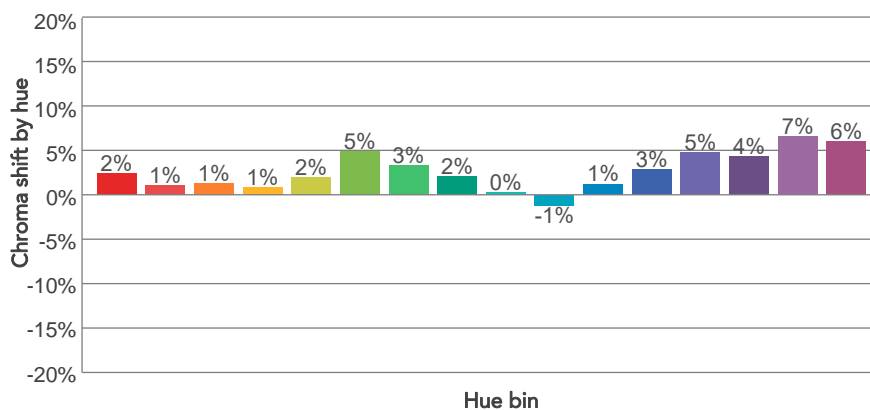
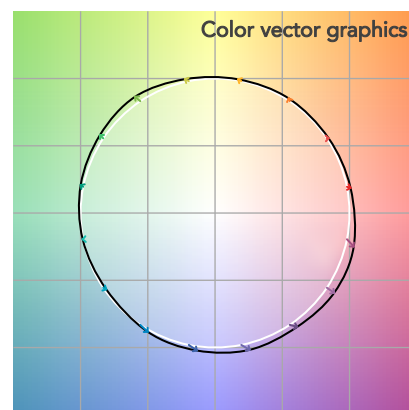
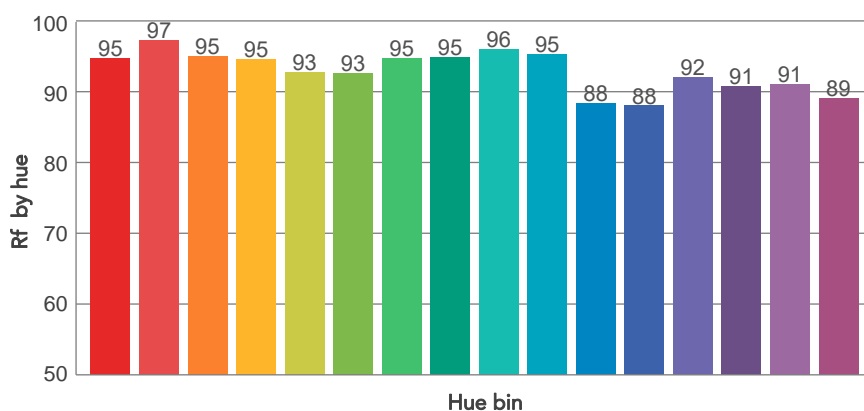
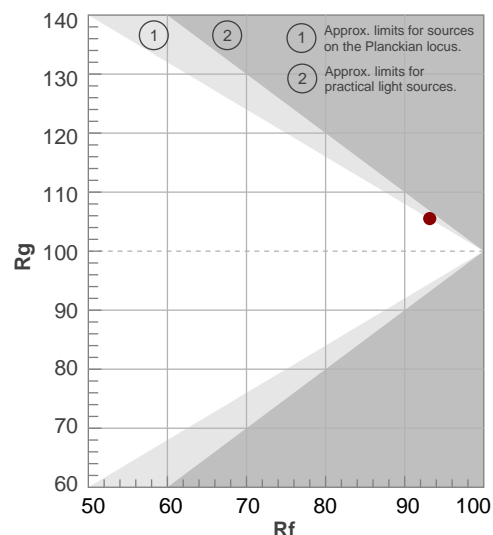
**Rf 93,2**

Fidelity index Rf

**Rg 105,5**

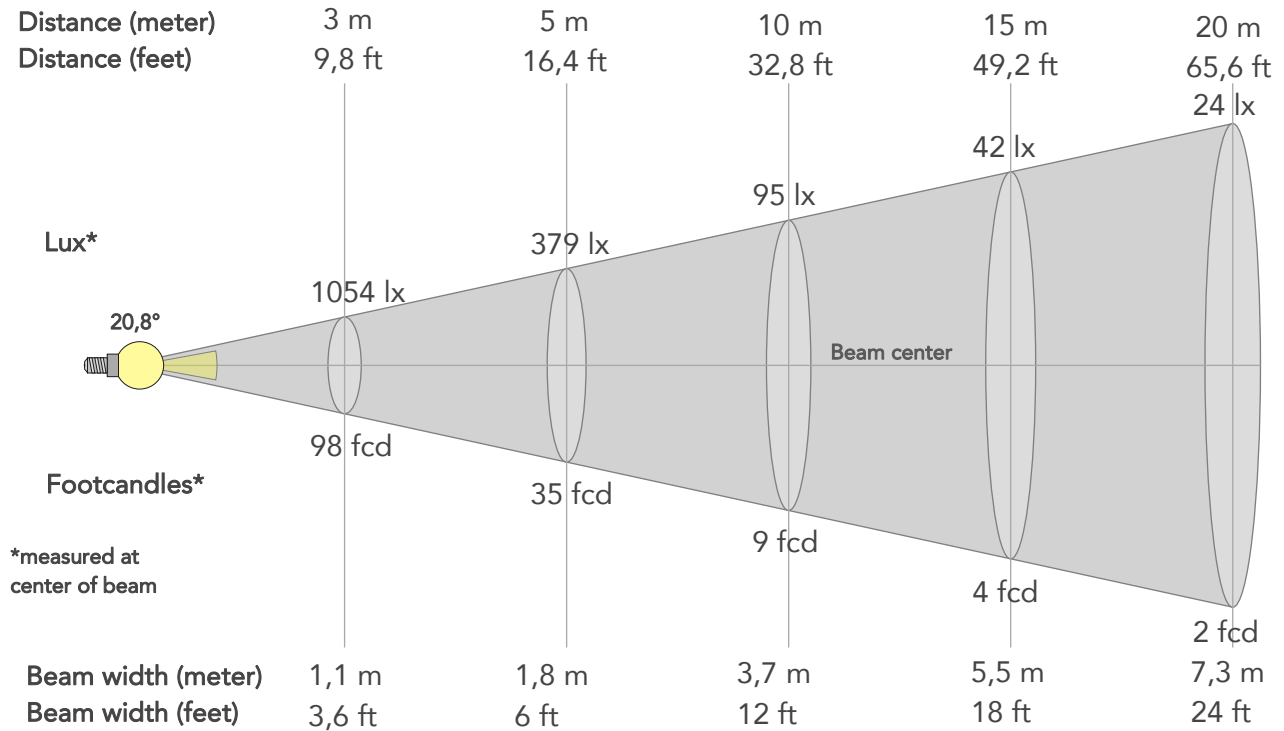
Gammut index

Hue Bin	R <sub>f</sub>	Graphic shifts (%)	
		Chroma	Hue
1	95	2%	-1%
2	97	1%	-1%
3	95	1%	2%
4	95	1%	3%
5	93	2%	3%
6	93	5%	1%
7	95	3%	-1%
8	95	2%	-1%
9	96	0%	0%
10	95	-1%	2%
11	88	1%	7%
12	88	3%	7%
13	92	5%	5%
14	91	4%	4%
15	91	7%	0%
16	89	6%	-4%



# BEAM DETAILS

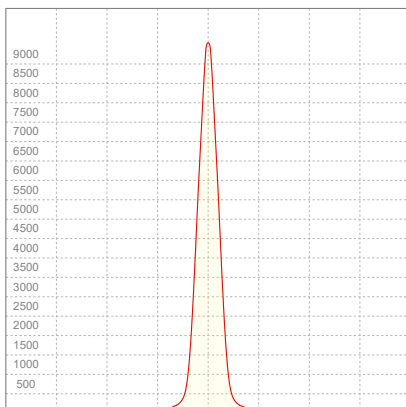
Beam angle 50%	Field angle 10%	Cut off angle 2,5%	Intensity ratio in 120° cone	Intensity ratio in 90° cone
20,8°	36,3°	52,9°	97,2%	93,6%



## BEAM INTENSITIES AND WIDTHS

Distance	1m	2m	3m	4m	5m	7,5m	10m	15m	20m	25m	30m	40m	50m
Distance	3,3ft	6,6ft	9,8ft	13,1ft	16,4ft	24,6ft	32,8ft	49,2ft	65,6ft	82ft	98,4ft	131,2ft	164ft
Lux	9483lx	2371lx	1054lx	593lx	379lx	169lx	95lx	42lx	24lx	15lx	11lx	6lx	4lx
Footcand.	881fcd	220fcd	98fcd	55fcd	35fcd	16fcd	9fcd	4fcd	2fcd	1fcd	1fcd	1fcd	0fcd
Beam wid.	0,4m	0,7m	1,1m	1,5m	1,8m	2,7m	3,7m	5,5m	7,3m	9,2m	11m	14,6m	18,3m
Beam wid.	1,2ft	2,4ft	3,6ft	4,8ft	6ft	9ft	12ft	18ft	24ft	30ft	36ft	48,1ft	60,1ft

## LINEAR DISTRIBUTION DIAGRAM

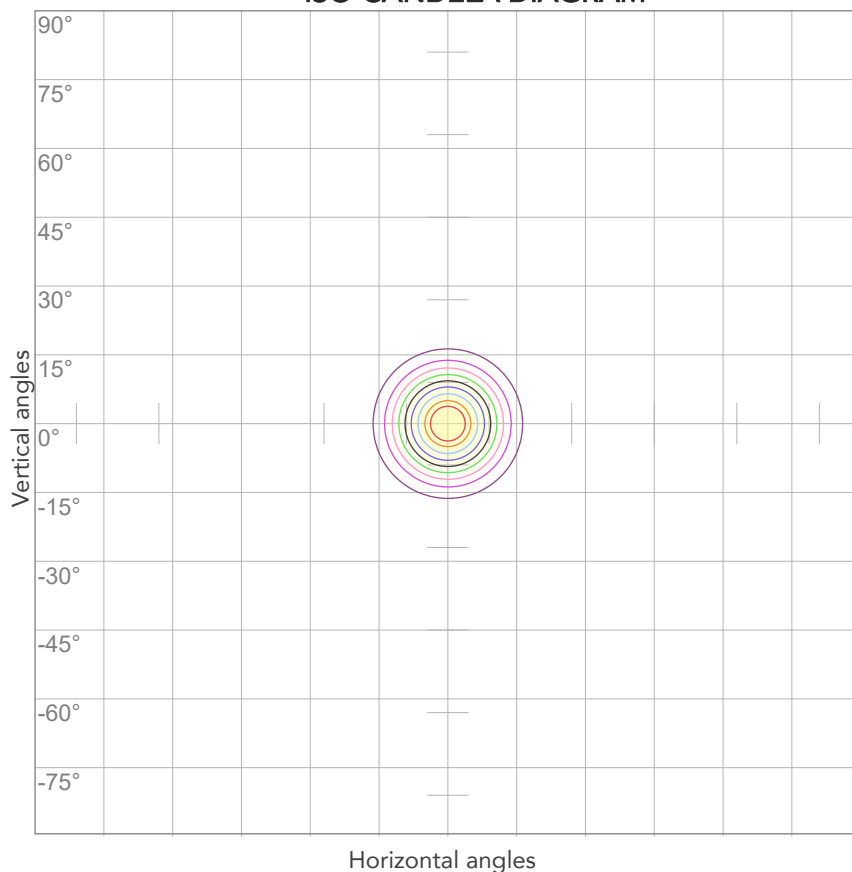


## ELECTRICAL SPECIFICATIONS

Input voltage	Input current	Input power	Power FC	Efficiency
228V	0,144A	31,4W	0,96	51lm/W

# ISO DIAGRAMS

## ISO CANDELA DIAGRAM



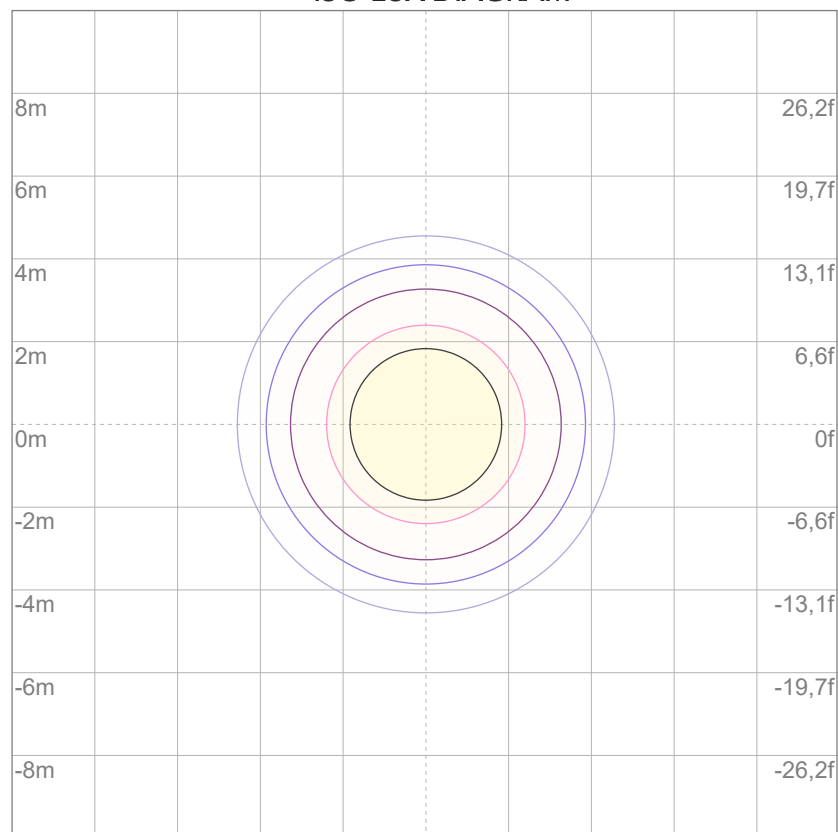
10%	948 cd
20%	1897 cd
30%	2845 cd
40%	3793 cd
50%	4742 cd
60%	5690 cd
70%	6638 cd
80%	7586 cd

### Conditions:

Number of c-planes: 2

Candela at center: 9483 cd

## ISO LUX DIAGRAM



3%	2,84 lx
5%	4,74 lx
10%	9,48 lx
30%	28,4 lx
50%	47,4 lx

### Conditions:

Number of c-planes: 2

Lux at center: 94,8 lx

*Lux distribution on a surface when lamp is mounted at 10 meters from the surface.*





Total lumen output:

1115 lm

Peak candela output:

6638 cd

Light quality:

CRI: 96,6

Color temperature:

2625 K

**PRODUCT NAME:**

ARCSPOTS VW

**MEASURAMENT CONDITIONS:**

Beam angle:

25°

Target:

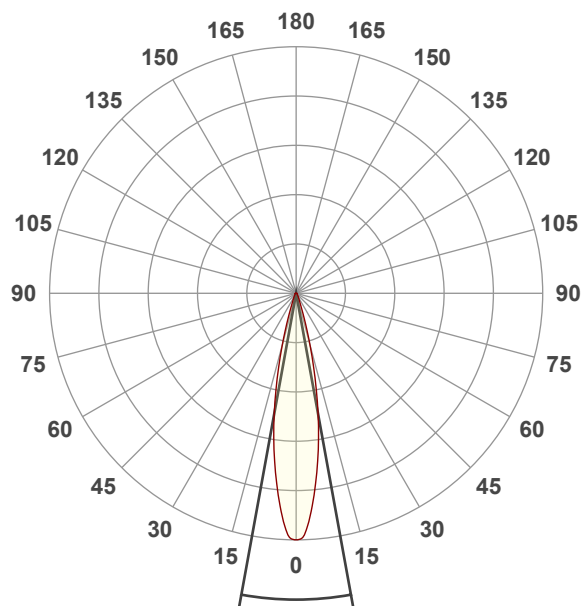
Warm White

Operator:

Salvatore Giglio

Date and time:

20/02/2024 13:19:33

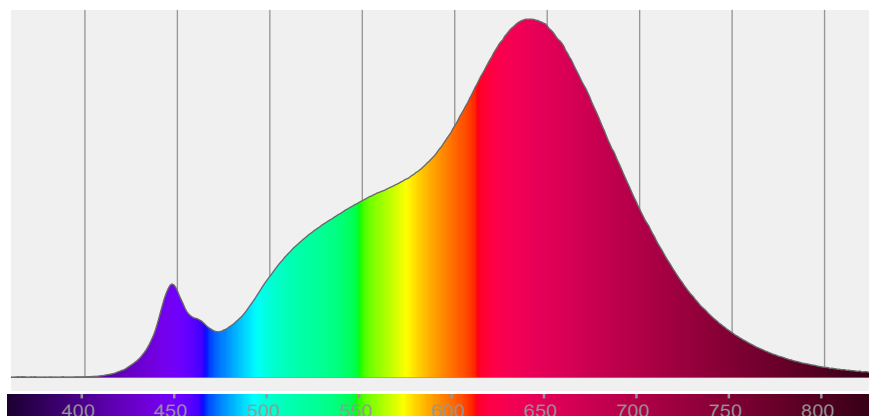


Beam angle 50%: 20,6°

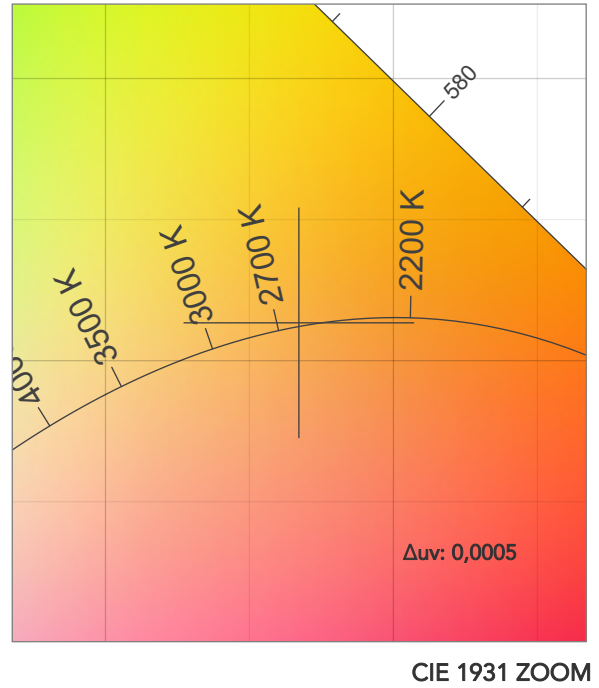
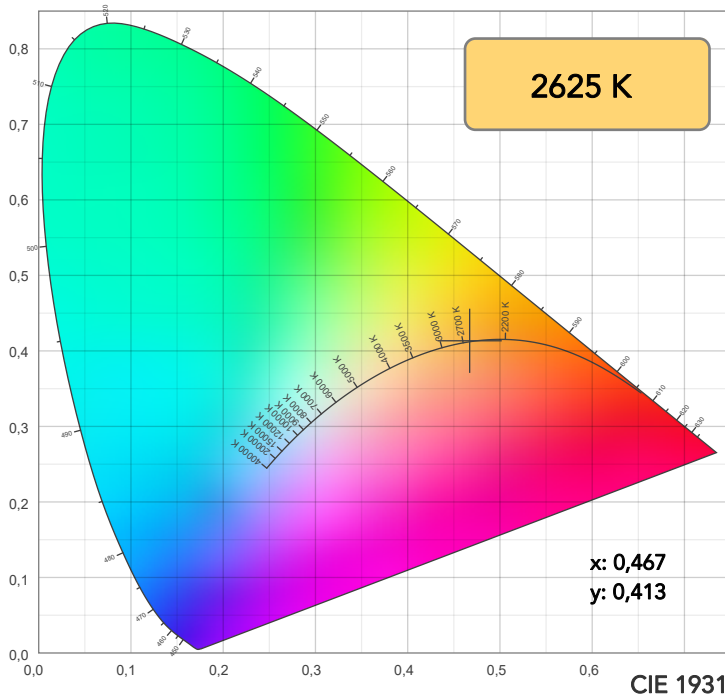
Field angle 10%: 36,3°

Cut off angle 2.5%: 52,9°

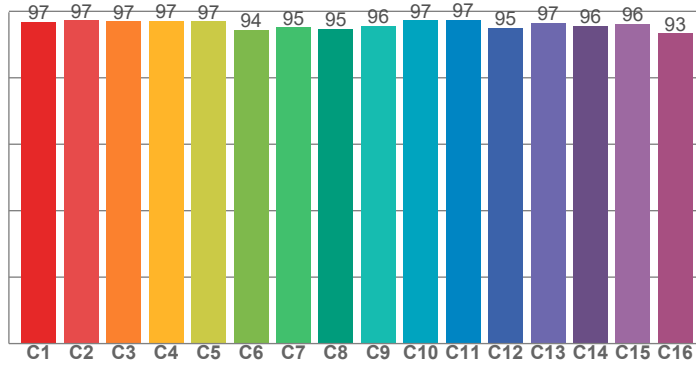
**Spectra**



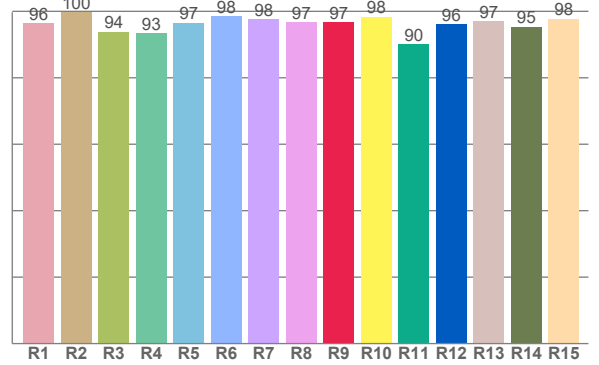
## COLOR DETAILS



TM30: 96,2



CRI: 96,6 (R1-R8)



CRI R values, only R1-R8 are used to calculate final CRI value

R1	R2	R3	R4	R5	R6	R7	R8	R9	R10	R11	R12	R13	R14	R15
96,4	99,8	93,9	93,4	96,6	98,5	97,6	96,8	96,8	98,4	90,1	96,1	97,1	95,4	97,8

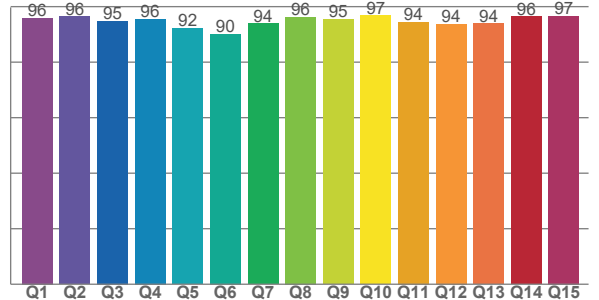
TM30 C values, 16 binned values out of total of 99 C values

C1	C2	C3	C4	C5	C6	C7	C8	C9	C10	C11	C12	C13	C14	C15	C16
96,9	97,2	97,0	97,2	97,0	94,4	95,1	94,7	95,6	97,3	97,4	95,1	96,6	95,6	96,2	93,4

CQS Q values

Q1	Q2	Q3	Q4	Q5	Q6	Q7	Q8	Q9	Q10	Q11	Q12	Q13	Q14	Q15
95,9	96,4	94,9	95,6	92,2	90,1	93,9	96,3	95,4	96,7	94,5	93,7	93,9	96,4	96,7

CQS: 94,2



## COLOR PARAMETERS

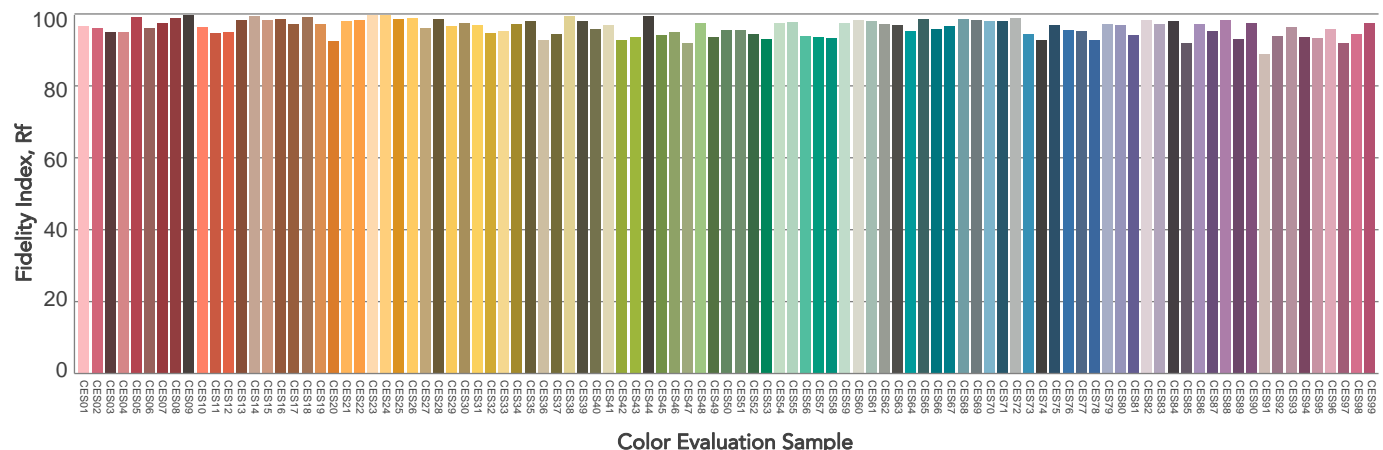
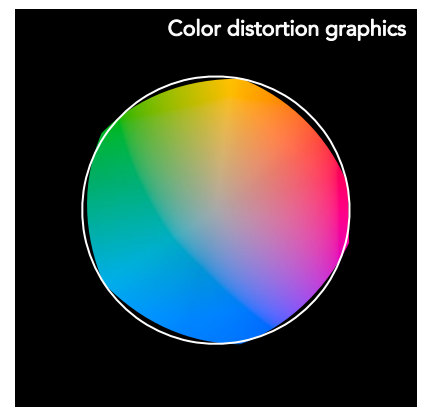
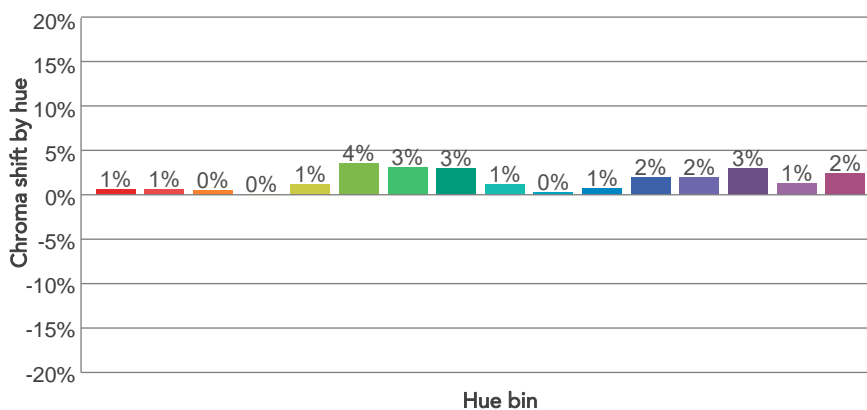
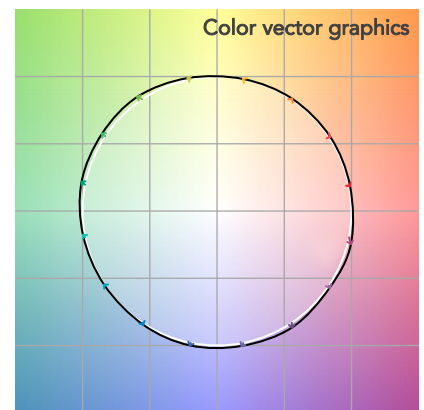
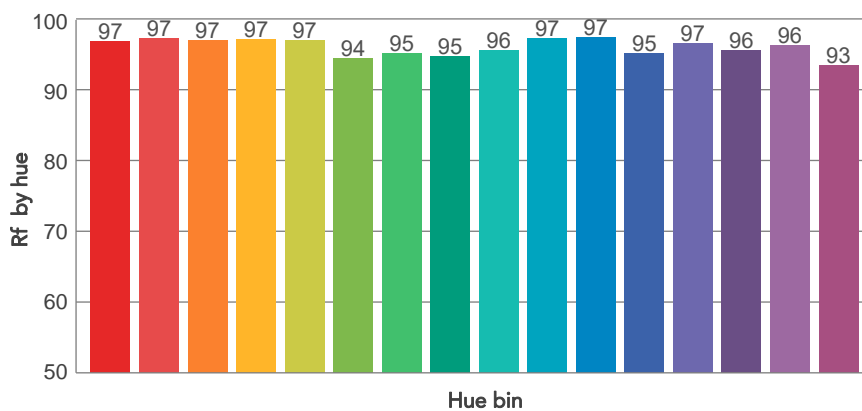
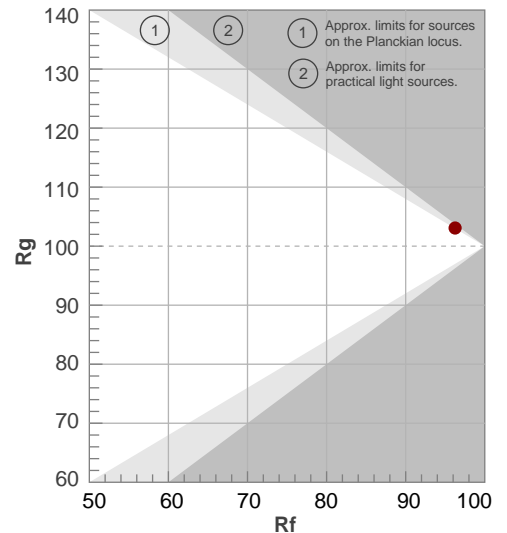
Color temperature	Color rendering index	Red component	Color fidelity	Color gamut	Color quality scale	Television lighting index	Color coordinate cie 1931	Color coordinate cie 1931	Color deviation from black body
CCT	CRI	CRI R9	TM30 Rf	TM30 Rg	CQS	TLCI	x	y	$\Delta uv$
2625 K	96,6	96,8	96,2	103,1	94,2	98	0,467	0,413	0,0005

# TM30 DETAILS

**Rf 96,2**  
Fidelity index Rf

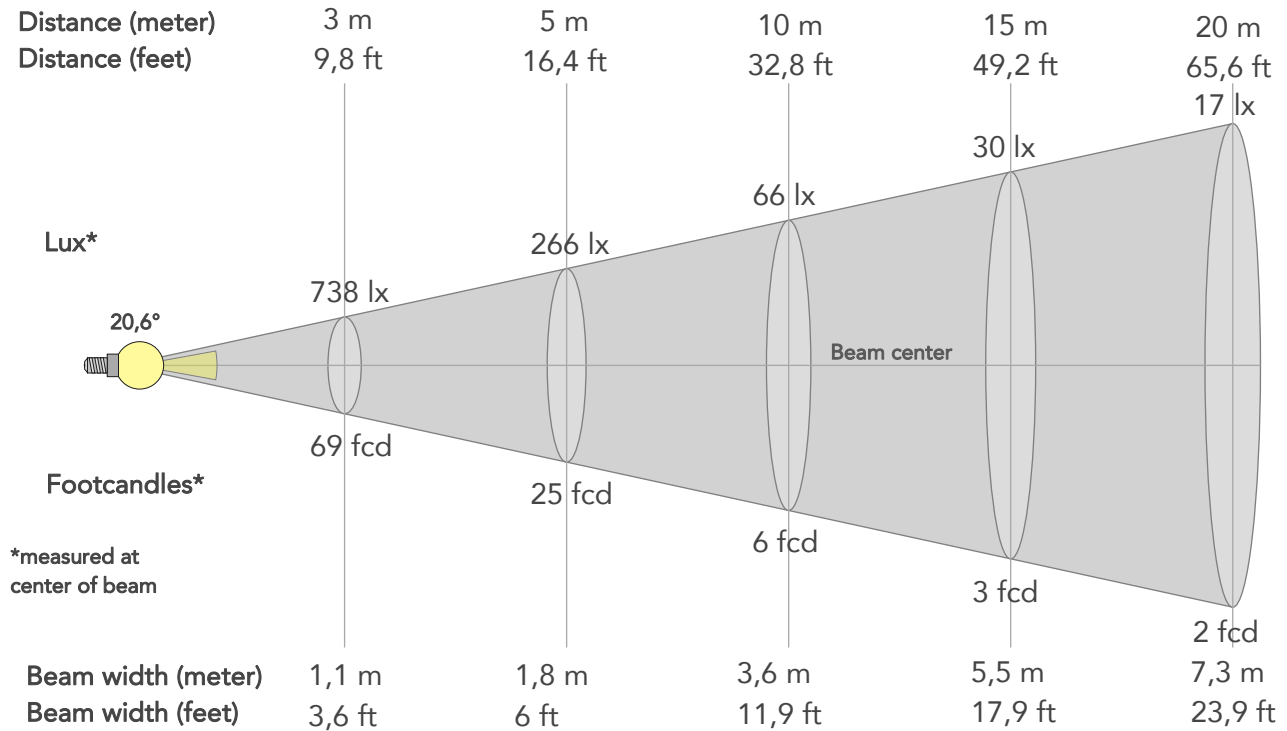
**Rg 103,1**  
Gammut index

Hue Bin	R <sub>f</sub>	Graphic shifts (%)	
		Chroma	Hue
1	97	1%	-1%
2	97	1%	-1%
3	97	0%	0%
4	97	0%	0%
5	97	1%	2%
6	94	4%	2%
7	95	3%	0%
8	95	3%	-2%
9	96	1%	-2%
10	97	0%	-1%
11	97	1%	1%
12	95	2%	0%
13	97	2%	-2%
14	96	3%	-2%
15	96	1%	-1%
16	93	2%	-5%



# BEAM DETAILS

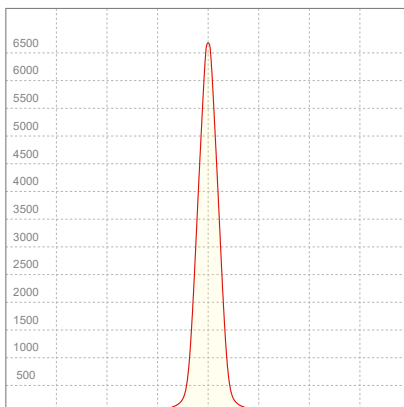
Beam angle 50%	Field angle 10%	Cut off angle 2,5%	Intensity ratio in 120° cone	Intensity ratio in 90° cone
20,6°	36,3°	52,9°	96,9%	93,3%



## BEAM INTENSITIES AND WIDTHS

Distance	1m	2m	3m	4m	5m	7,5m	10m	15m	20m	25m	30m	40m	50m
Distance	3,3ft	6,6ft	9,8ft	13,1ft	16,4ft	24,6ft	32,8ft	49,2ft	65,6ft	82ft	98,4ft	131,2ft	164ft
Lux	6638lx	1660lx	738lx	415lx	266lx	118lx	66lx	30lx	17lx	11lx	7lx	4lx	3lx
Footcand.	617fcd	154fcd	69fcd	39fcd	25fcd	11fcd	6fcd	3fcd	2fcd	1fcd	1fcd	0fcd	0fcd
Beam wid.	0,4m	0,7m	1,1m	1,5m	1,8m	2,7m	3,6m	5,5m	7,3m	9,1m	10,9m	14,5m	18,2m
Beam wid.	1,2ft	2,4ft	3,6ft	4,8ft	6ft	8,9ft	11,9ft	17,9ft	23,9ft	29,8ft	35,8ft	47,7ft	59,6ft

## LINEAR DISTRIBUTION DIAGRAM

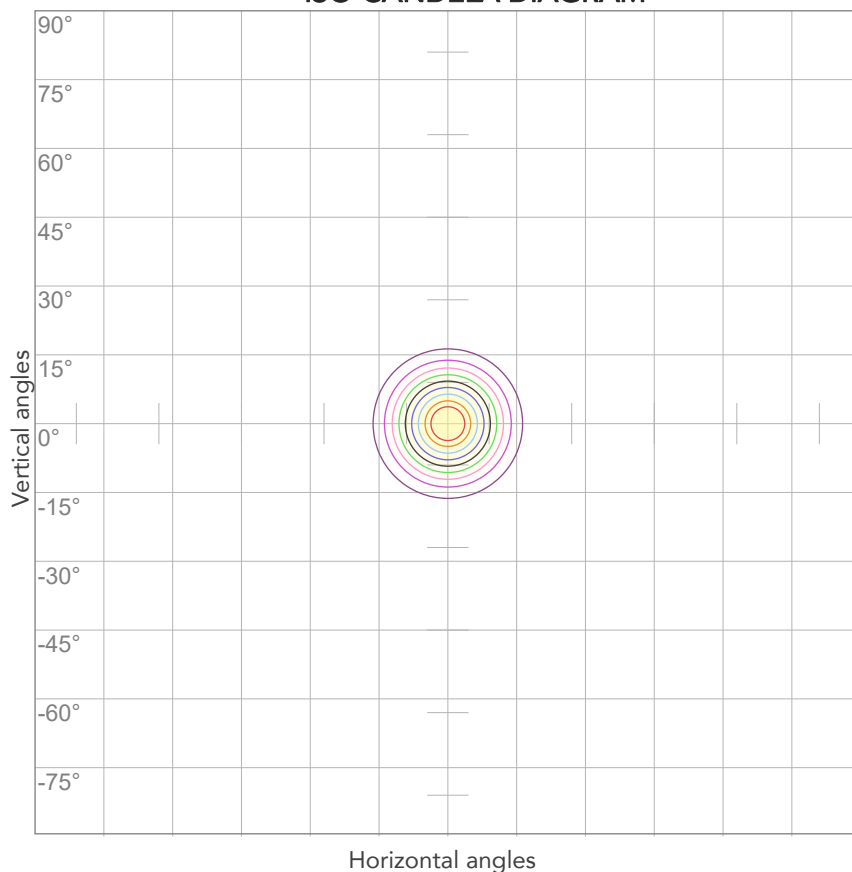


## ELECTRICAL SPECIFICATIONS

Input voltage	Input current	Input power	Power FC	Effeciency
227V	0,125A	26,4W	0,93	42lm/W

# ISO DIAGRAMS

## ISO CANDELA DIAGRAM



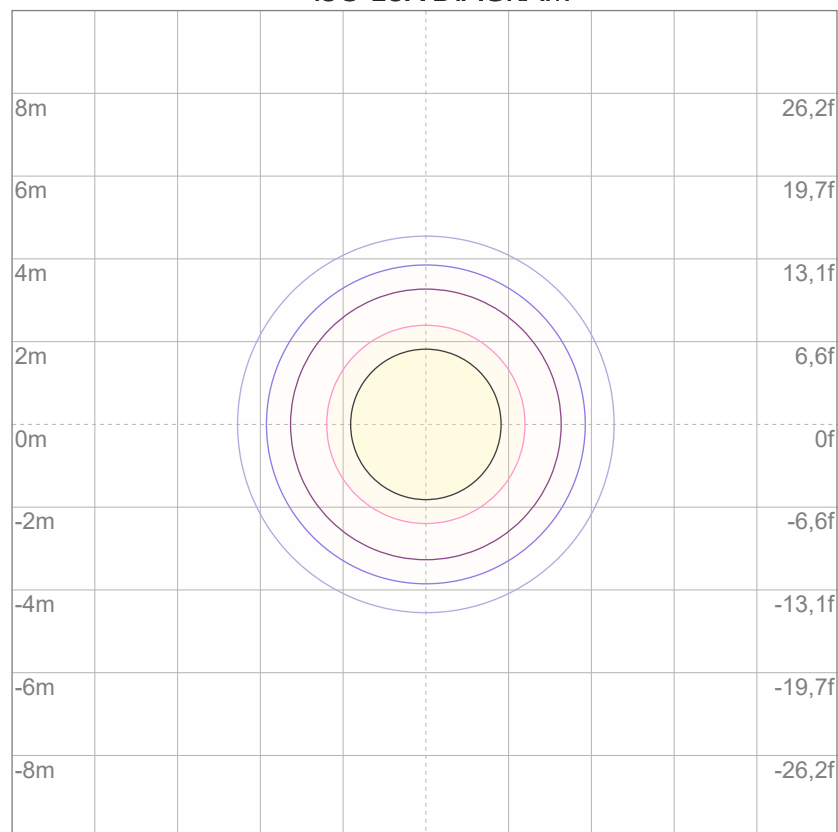
10%	664 cd
20%	1328 cd
30%	1991 cd
40%	2655 cd
50%	3319 cd
60%	3983 cd
70%	4647 cd
80%	5310 cd

### Conditions:

Number of c-planes: 2

Candela at center: 6638 cd

## ISO LUX DIAGRAM



3%	1,99 lx
5%	3,32 lx
10%	6,64 lx
30%	19,9 lx
50%	33,2 lx

### Conditions:

Number of c-planes: 2

Lux at center: 66,4 lx

*Lux distribution on a surface when lamp is mounted at 10 meters from the surface.*



Total lumen output:

1577 lm

Peak candela output:

9414 cd

Light quality:

CRI: 93,0

Color temperature:

6756 K

**PRODUCT NAME:**

ARCSPOTS VW

**MEASURAMENT CONDITIONS:**

Beam angle:

25°

Target:

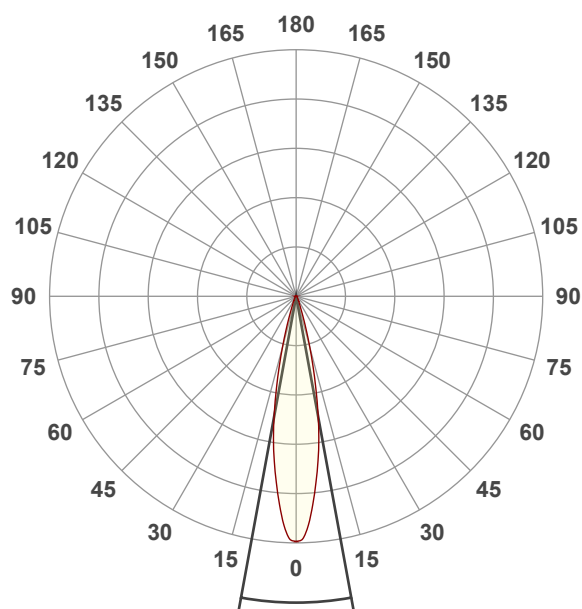
Cold White

Operator:

Salvatore Giglio

Date and time:

20/02/2024 13:21:22

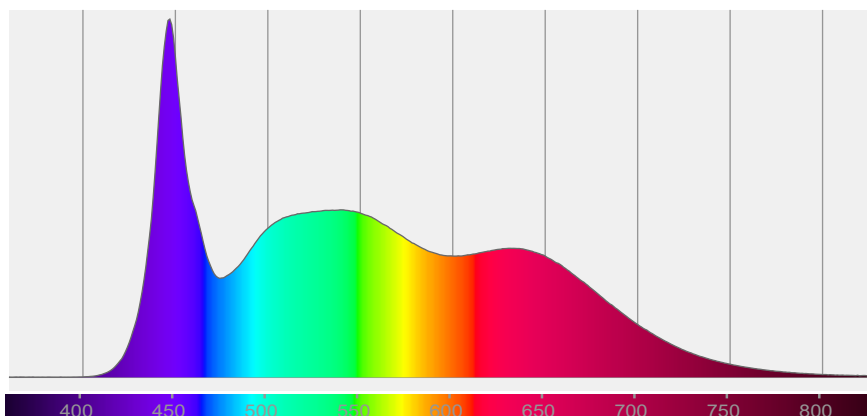


Beam angle 50%: 20,7°

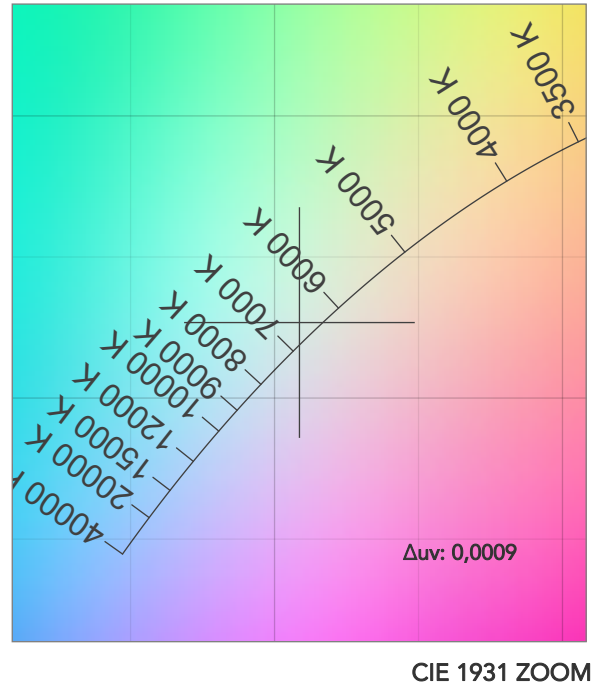
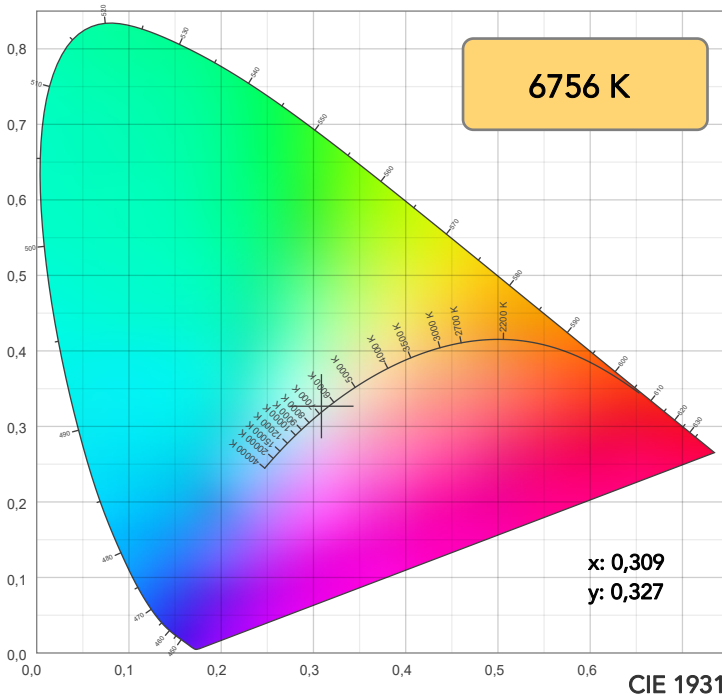
Field angle 10%: 36,3°

Cut off angle 2.5%: 52,8°

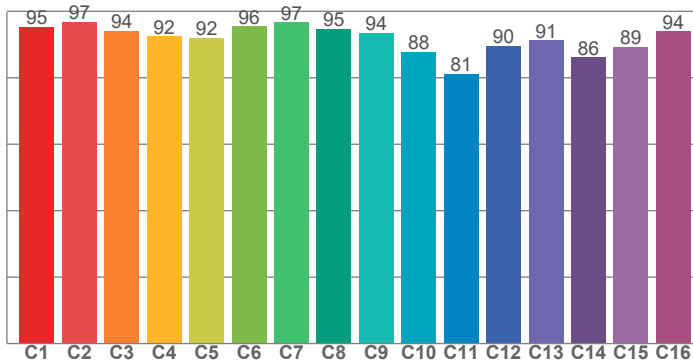
**Spectra**



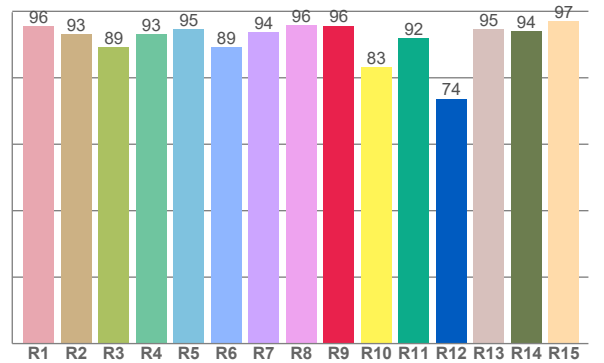
# COLOR DETAILS



**TM30: 92,1**



**CRI: 93,0 (R1-R8)**



CRI R values, only R1-R8 are used to calculate final CRI value

R1	R2	R3	R4	R5	R6	R7	R8	R9	R10	R11	R12	R13	R14	R15
95,6	93,1	89,1	93,2	94,7	89,2	93,6	95,7	95,7	83,2	92,0	73,7	94,6	94,1	97,1

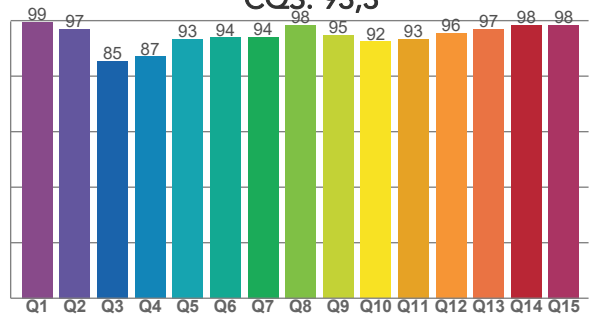
TM30 C values, 16 binned values out of total of 99 C values

C1	C2	C3	C4	C5	C6	C7	C8	C9	C10	C11	C12	C13	C14	C15	C16
95,3	96,8	94,2	92,5	91,9	95,5	96,7	94,7	93,6	87,7	81,1	89,6	91,3	86,2	89,3	94,0

CQS Q values

Q1	Q2	Q3	Q4	Q5	Q6	Q7	Q8	Q9	Q10	Q11	Q12	Q13	Q14	Q15
99,5	96,9	85,4	87,1	93,4	93,9	94,2	98,5	94,7	92,4	93,4	95,5	97,0	98,4	98,4

**CQS: 93,3**



## COLOR PARAMETERS

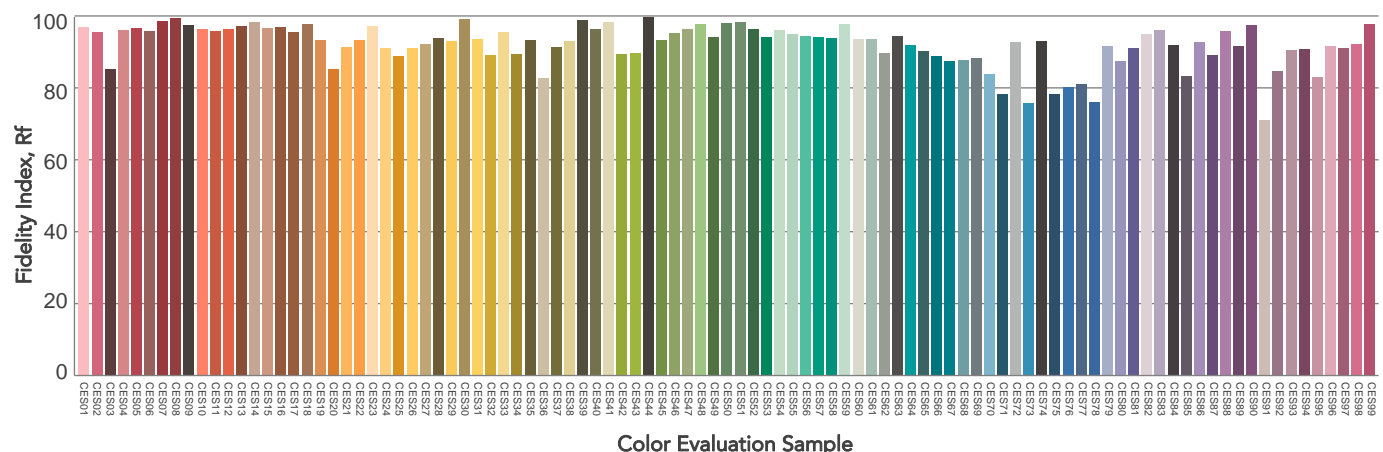
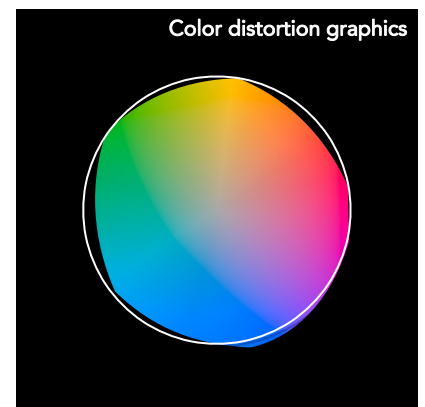
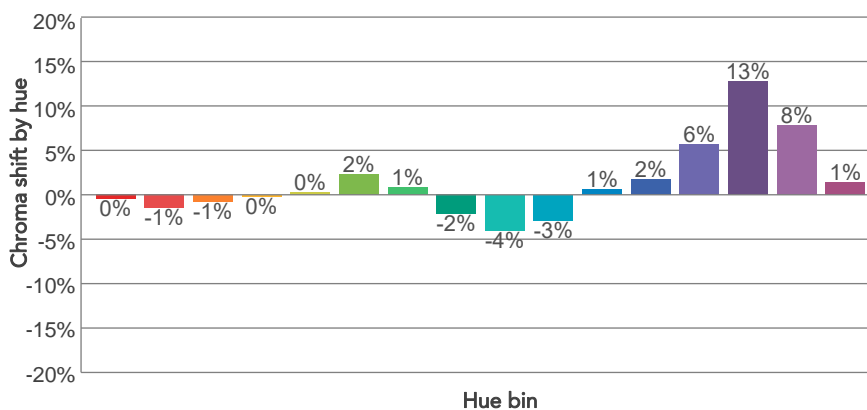
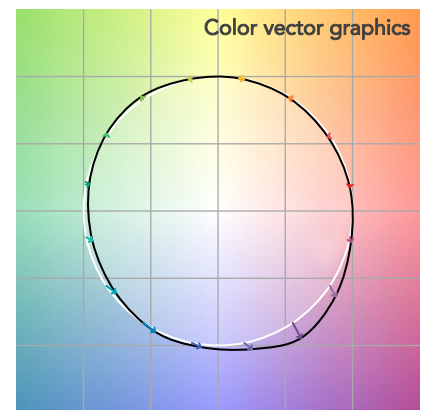
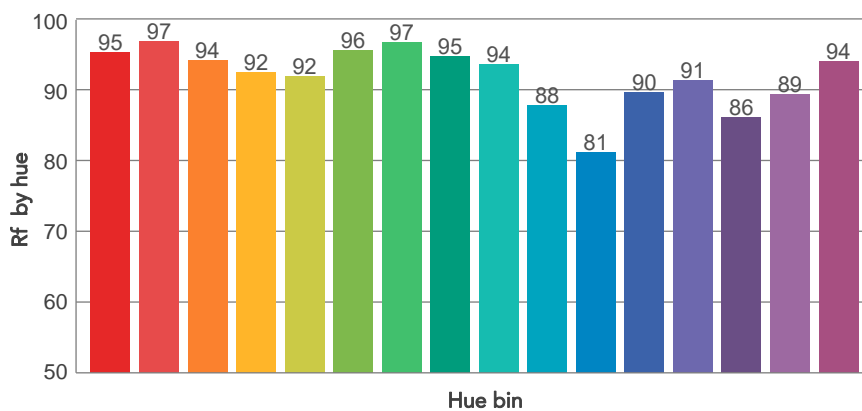
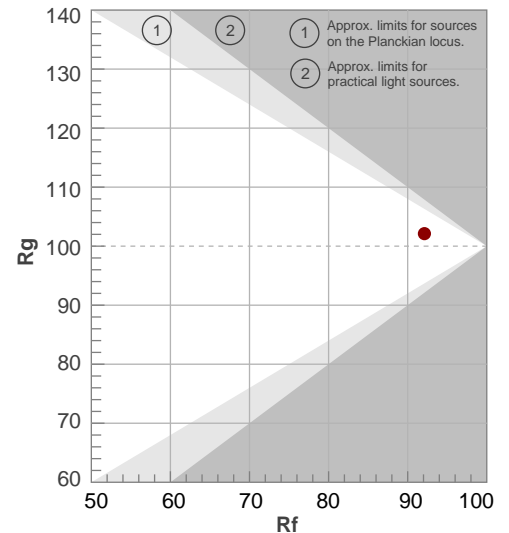
Color temperature	Color rendering index	Red component	Color fidelity	Color gamut	Color quality scale	Television lighting index	Color coordinate cie 1931	Color coordinate cie 1931	Color deviation from black body
CCT	CRI	CRI R9	TM30 Rf	TM30 Rg	CQS	TLCI	x	y	$\Delta uv$
6756 K	93,0	95,7	92,1	102,1	93,3	98	0,309	0,327	0,0009

# TM30 DETAILS

**Rf 92,1**  
Fidelity index Rf

**Rg 102,1**  
Gammut index

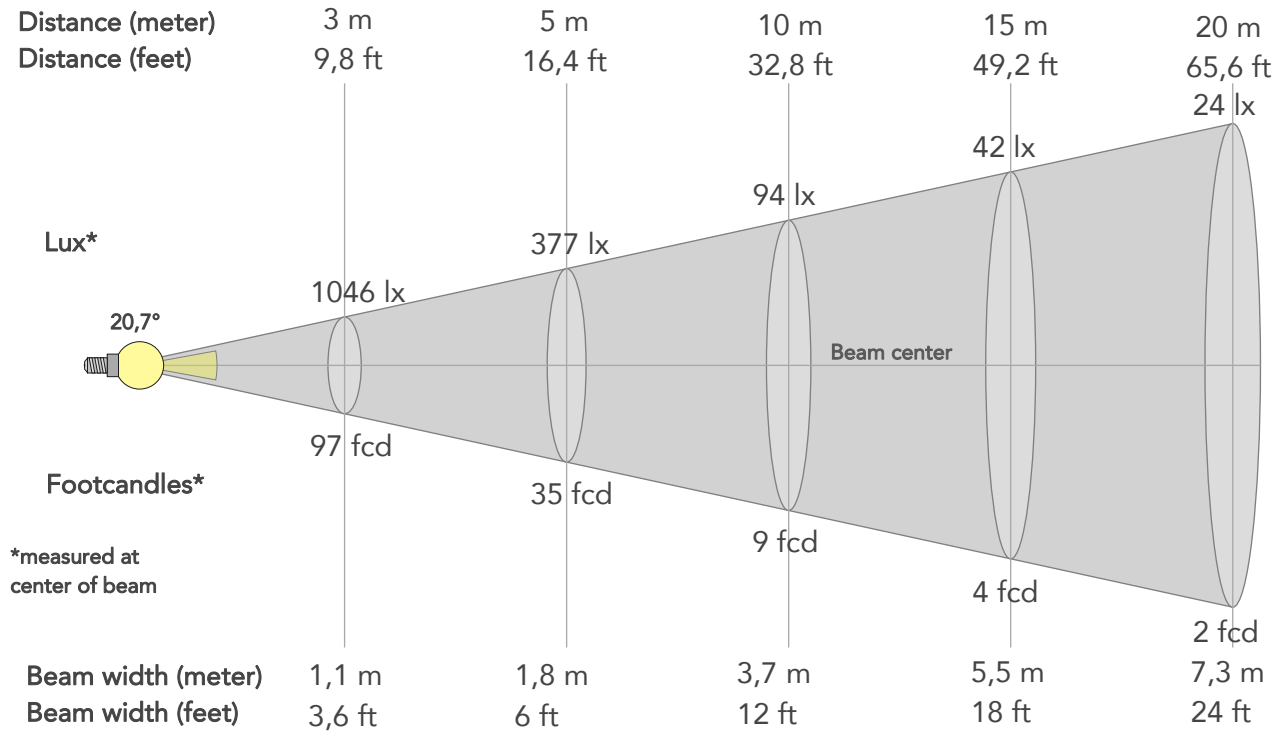
Hue Bin	R <sub>f</sub>	Graphic shifts (%)	
		Chroma	Hue
1	95	0%	-2%
2	97	-1%	0%
3	94	-1%	3%
4	92	0%	4%
5	92	0%	2%
6	96	2%	0%
7	97	1%	-2%
8	95	-2%	-1%
9	94	-4%	3%
10	88	-3%	8%
11	81	1%	11%
12	90	2%	7%
13	91	6%	5%
14	86	13%	-1%
15	89	8%	-4%
16	94	1%	-3%





# BEAM DETAILS

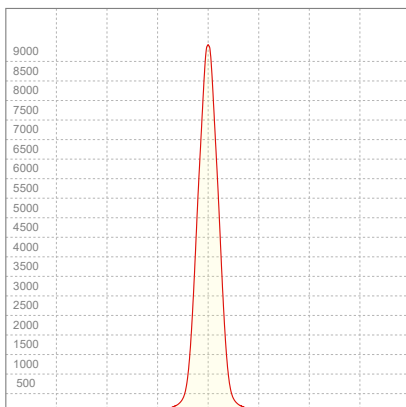
Beam angle 50%	Field angle 10%	Cut off angle 2,5%	Intensity ratio in 120° cone	Intensity ratio in 90° cone
20,7°	36,3°	52,8°	97,1%	93,6%



## BEAM INTENSITIES AND WIDTHS

Distance	1m	2m	3m	4m	5m	7,5m	10m	15m	20m	25m	30m	40m	50m
Distance	3,3ft	6,6ft	9,8ft	13,1ft	16,4ft	24,6ft	32,8ft	49,2ft	65,6ft	82ft	98,4ft	131,2ft	164ft
Lux	9414lx	2353lx	1046lx	588lx	377lx	167lx	94lx	42lx	24lx	15lx	10lx	6lx	4lx
Footcand.	875fcd	219fcd	97fcd	55fcd	35fcd	16fcd	9fcd	4fcd	2fcd	1fcd	1fcd	1fcd	0fcd
Beam wid.	0,4m	0,7m	1,1m	1,5m	1,8m	2,7m	3,7m	5,5m	7,3m	9,1m	11m	14,6m	18,3m
Beam wid.	1,2ft	2,4ft	3,6ft	4,8ft	6ft	9ft	12ft	18ft	24ft	30ft	36ft	48ft	60ft

## LINEAR DISTRIBUTION DIAGRAM

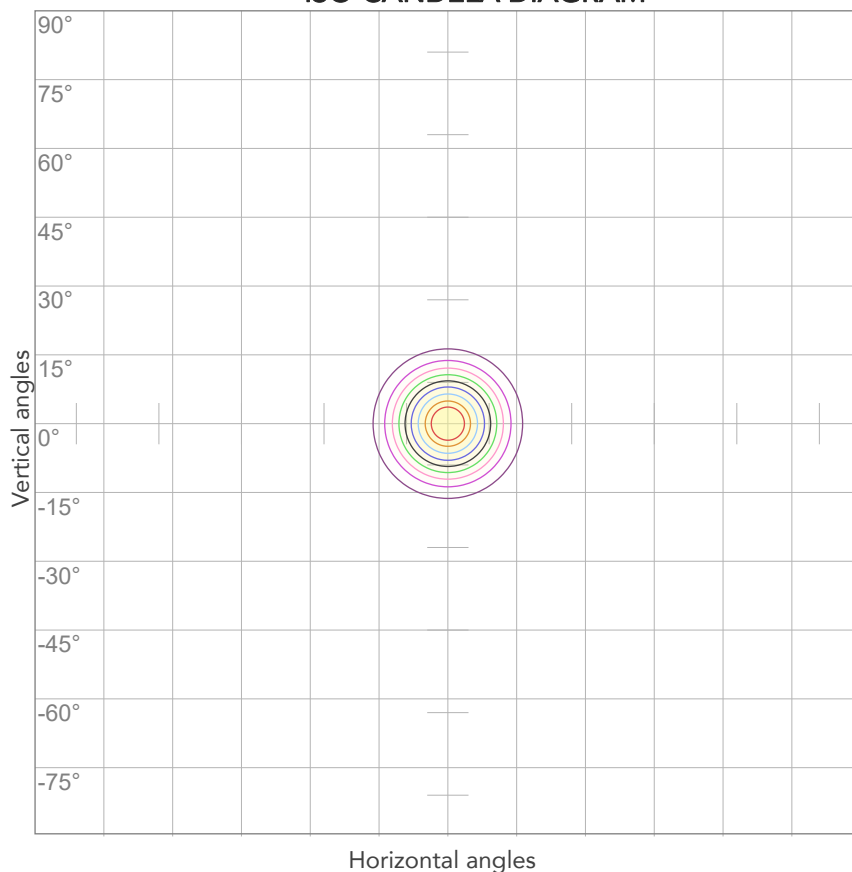


## ELECTRICAL SPECIFICATIONS

Input voltage	Input current	Input power	Power FC	Efficiency
227V	0,124A	26,1W	0,93	60lm/W

# ISO DIAGRAMS

## ISO CANDELA DIAGRAM



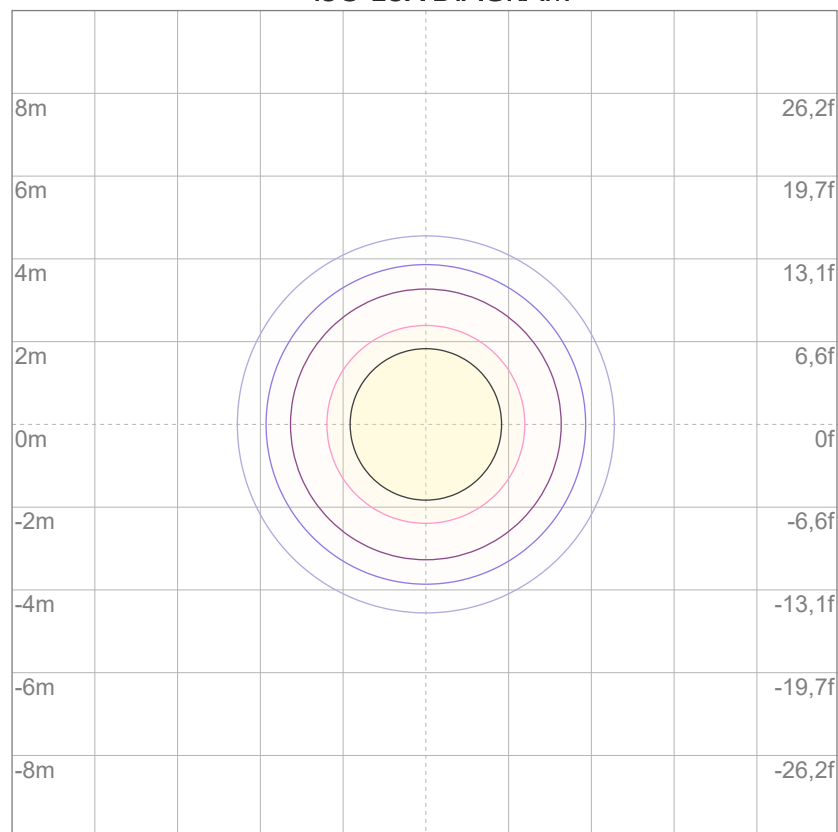
10%	941 cd
20%	1883 cd
30%	2824 cd
40%	3766 cd
50%	4707 cd
60%	5648 cd
70%	6590 cd
80%	7531 cd

### Conditions:

Number of c-planes: 2

Candela at center: 9414 cd

## ISO LUX DIAGRAM



3%	2,82 lx
5%	4,71 lx
10%	9,41 lx
30%	28,2 lx
50%	47,1 lx

### Conditions:

Number of c-planes: 2

Lux at center: 94,1 lx

*Lux distribution on a surface when lamp is mounted at 10 meters from the surface.*



Total lumen output:

1197 lm

Peak candela output:

7117 cd

Light quality:

CRI: 95,9

Color temperature:

2750 K

**PRODUCT NAME:**

ARCSPOTS VW

**MEASURAMENT CONDITIONS:**

Beam angle:

25°

Target:

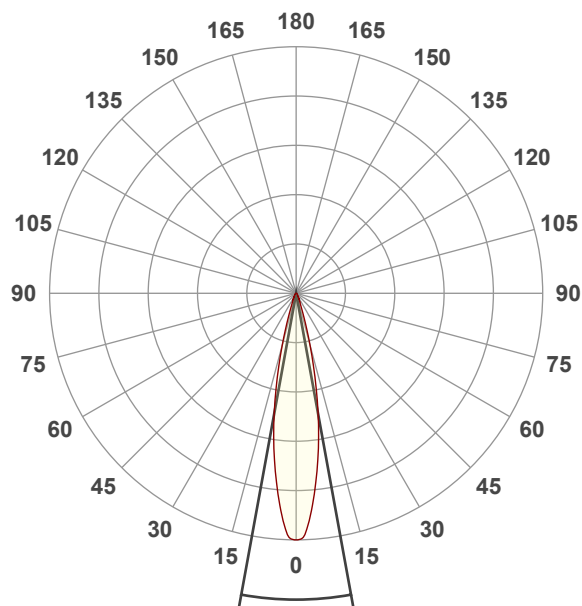
2700K

Operator:

Salvatore Giglio

Date and time:

20/02/2024 13:14:23

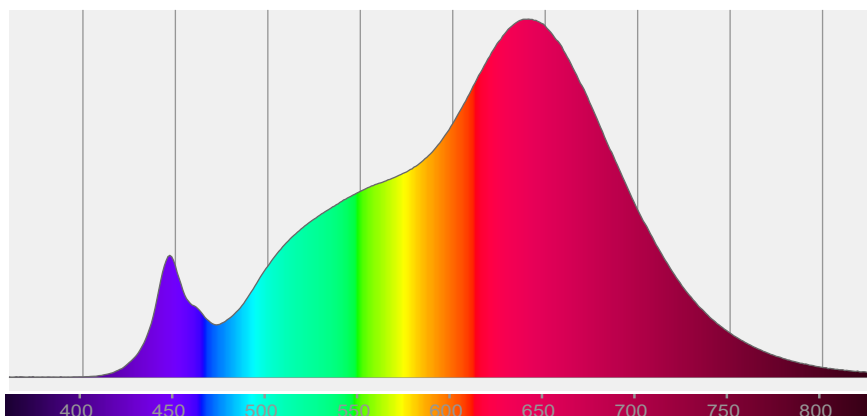


Beam angle 50%: 20,6°

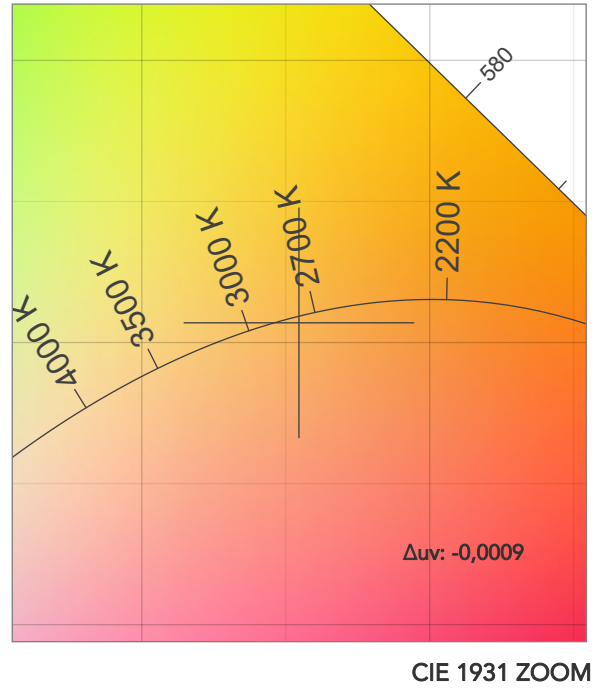
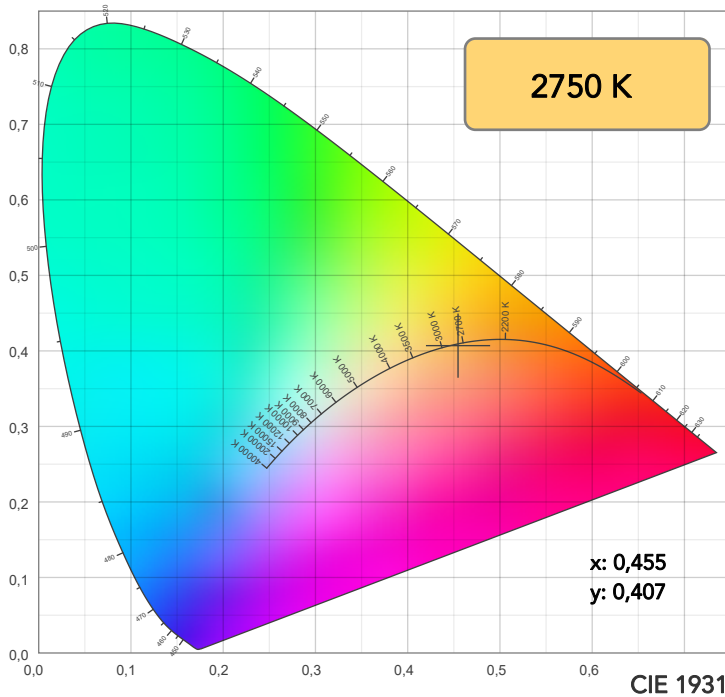
Field angle 10%: 36,3°

Cut off angle 2.5%: 53°

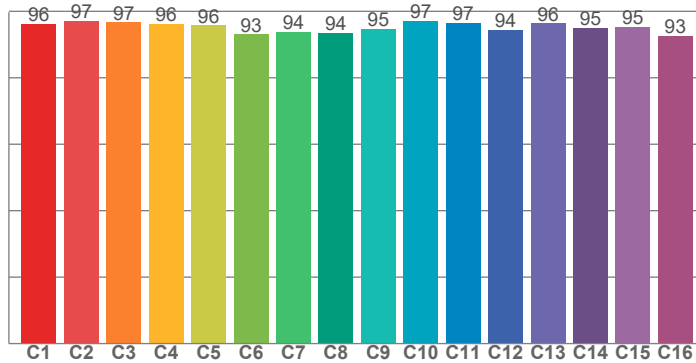
**Spectra**



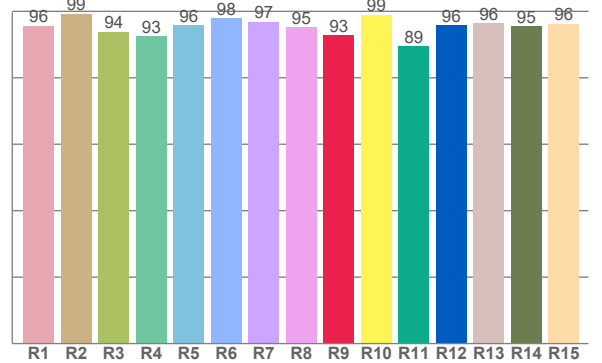
## COLOR DETAILS



TM30: 95,5



CRI: 95,9 (R1-R8)



CRI R values, only R1-R8 are used to calculate final CRI value

R1	R2	R3	R4	R5	R6	R7	R8	R9	R10	R11	R12	R13	R14	R15
95,6	99,3	93,8	92,6	95,8	98,0	96,9	95,1	92,9	99,0	89,4	95,9	96,4	95,4	96,2

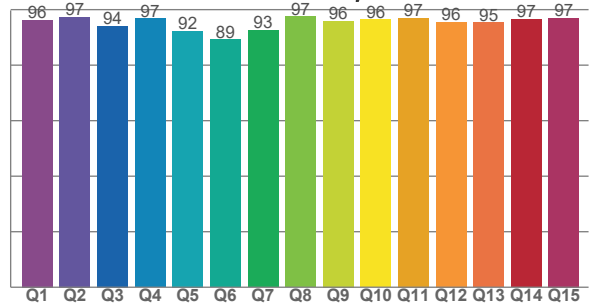
TM30 C values, 16 binned values out of total of 99 C values

C1	C2	C3	C4	C5	C6	C7	C8	C9	C10	C11	C12	C13	C14	C15	C16
96,2	97,1	96,6	96,2	95,8	93,1	93,7	93,5	94,8	97,1	96,5	94,3	96,4	95,0	95,4	92,6

CQS Q values

Q1	Q2	Q3	Q4	Q5	Q6	Q7	Q8	Q9	Q10	Q11	Q12	Q13	Q14	Q15
96,2	97,4	94,1	96,8	92,4	89,2	92,6	97,5	96,0	96,4	96,9	95,5	95,3	96,5	97,0

CQS: 94,5



## COLOR PARAMETERS

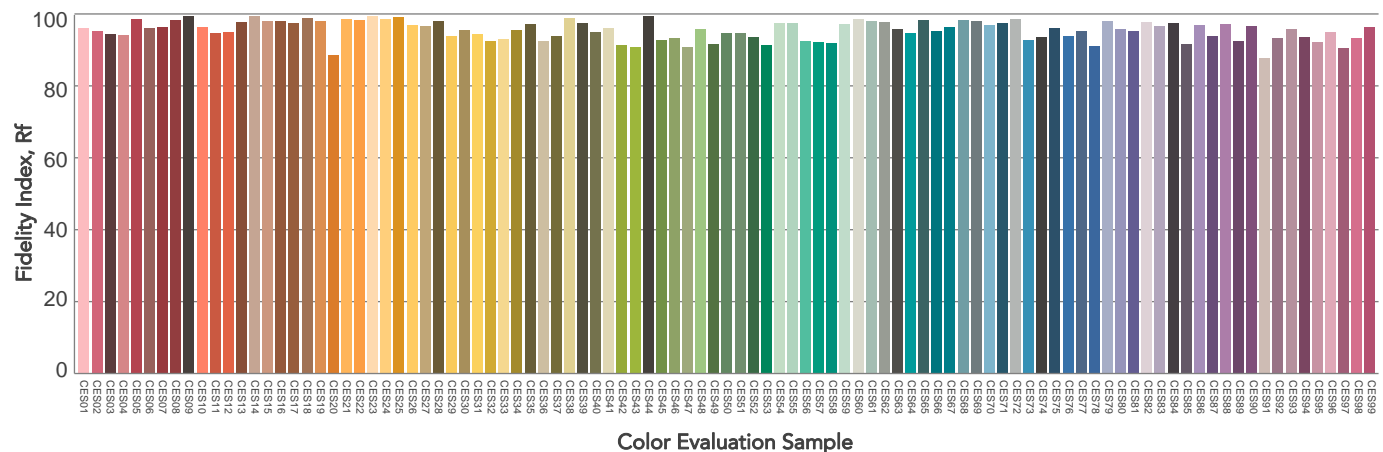
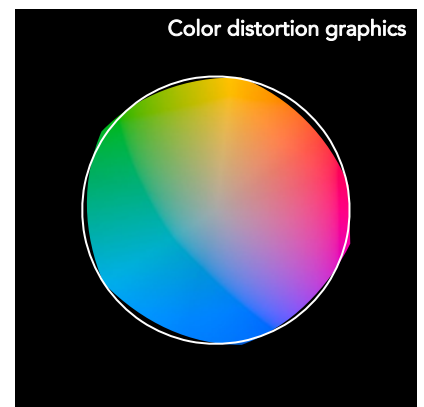
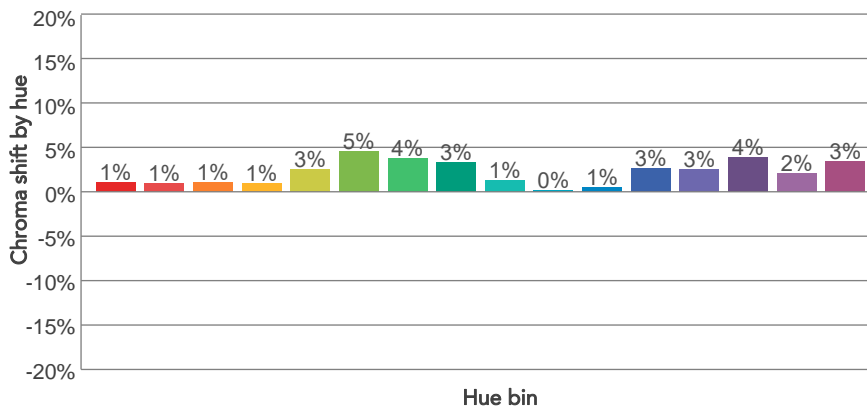
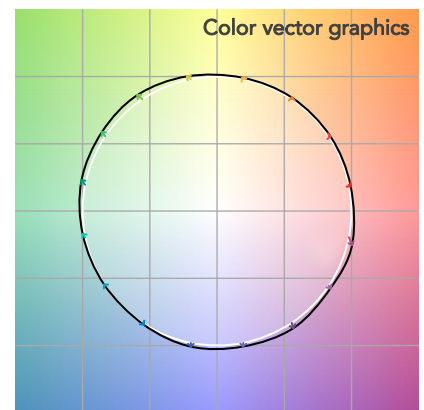
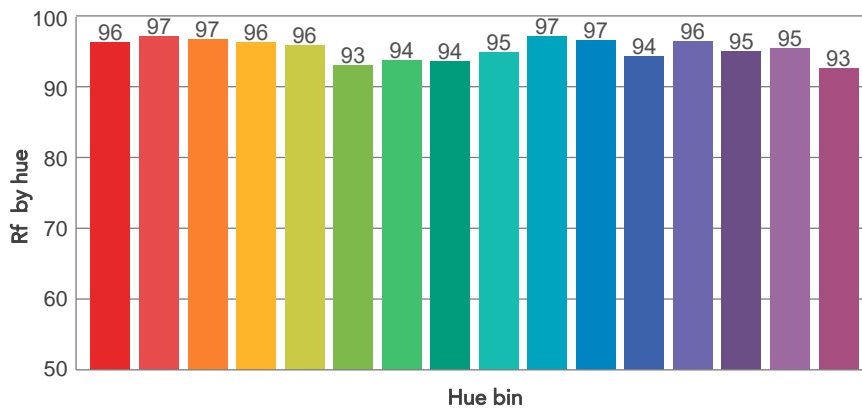
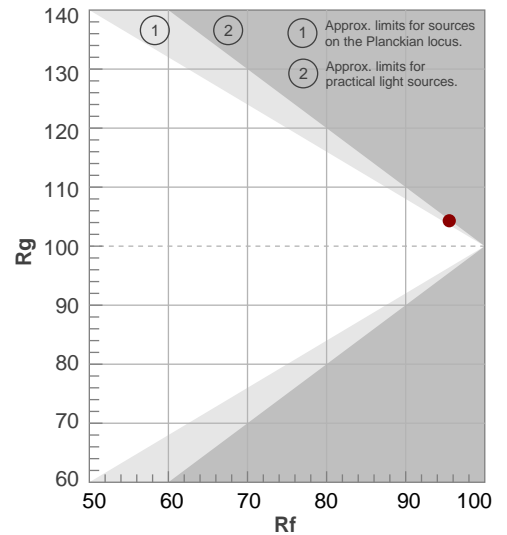
Color temperature	Color rendering index	Red component	Color fidelity	Color gamut	Color quality scale	Television lighting index	Color coordinate cie 1931	Color coordinate cie 1931	Color deviation from black body
CCT	CRI	CRI R9	TM30 Rf	TM30 Rg	CQS	TLCI	x	y	Δuv
2750 K	95,9	92,9	95,5	104,3	94,5	97	0,455	0,407	-0,0009

# TM30 DETAILS

**Rf 95,5**  
Fidelity index Rf

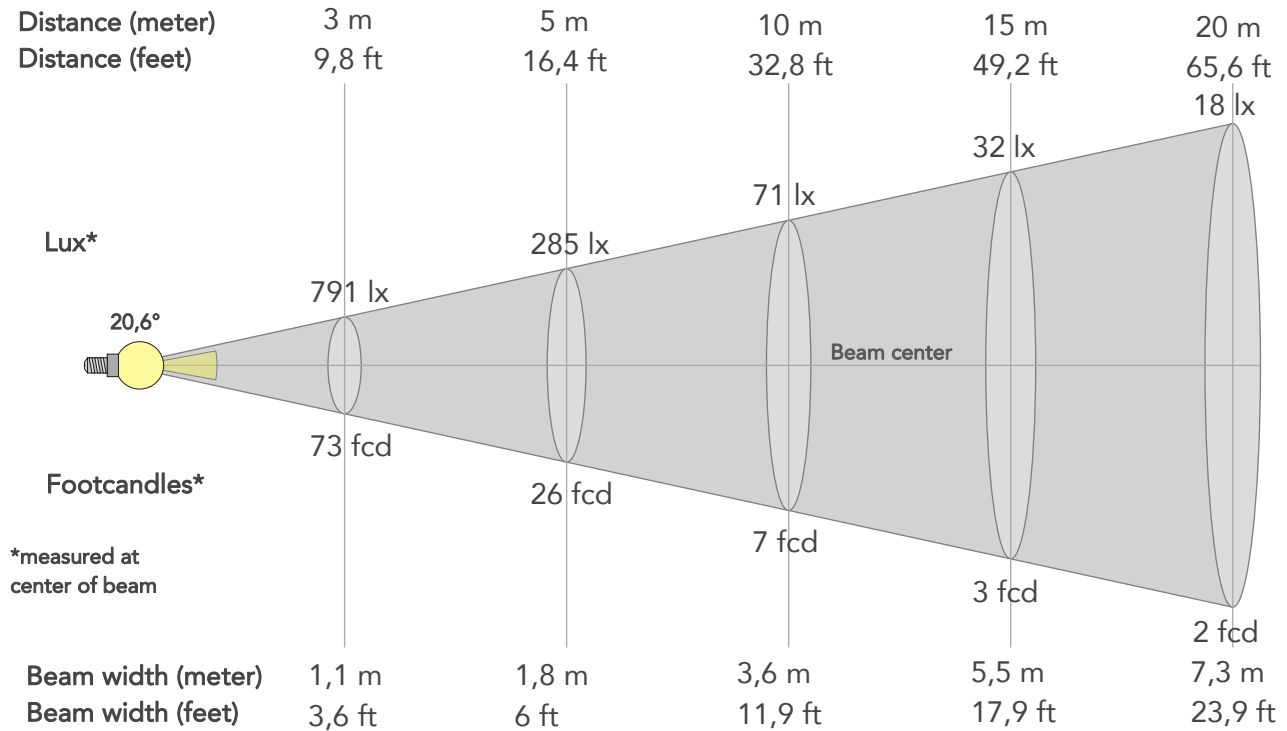
**Rg 104,3**  
Gammut index

Hue Bin	R <sub>f</sub>	Graphic shifts (%)	
		Chroma	Hue
1	96	1%	-1%
2	97	1%	-1%
3	97	1%	1%
4	96	1%	1%
5	96	3%	2%
6	93	5%	1%
7	94	4%	-1%
8	94	3%	-3%
9	95	1%	-3%
10	97	0%	-1%
11	97	1%	2%
12	94	3%	1%
13	96	3%	-1%
14	95	4%	-1%
15	95	2%	-1%
16	93	3%	-5%



# BEAM DETAILS

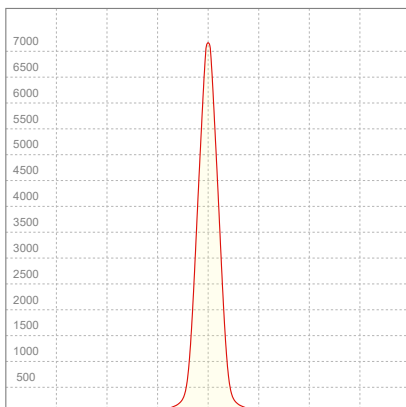
Beam angle 50%	Field angle 10%	Cut off angle 2,5%	Intensity ratio in 120° cone	Intensity ratio in 90° cone
20,6°	36,3°	53°	97,0%	93,4%



## BEAM INTENSITIES AND WIDTHS

Distance	1m	2m	3m	4m	5m	7,5m	10m	15m	20m	25m	30m	40m	50m
Distance	3,3ft	6,6ft	9,8ft	13,1ft	16,4ft	24,6ft	32,8ft	49,2ft	65,6ft	82ft	98,4ft	131,2ft	164ft
Lux	7117lx	1779lx	791lx	445lx	285lx	127lx	71lx	32lx	18lx	11lx	8lx	4lx	3lx
Footcand.	661fcd	165fcd	73fcd	41fcd	26fcd	12fcd	7fcd	3fcd	2fcd	1fcd	1fcd	0fcd	0fcd
Beam wid.	0,4m	0,7m	1,1m	1,5m	1,8m	2,7m	3,6m	5,5m	7,3m	9,1m	10,9m	14,6m	18,2m
Beam wid.	1,2ft	2,4ft	3,6ft	4,8ft	6ft	9ft	11,9ft	17,9ft	23,9ft	29,9ft	35,8ft	47,8ft	59,7ft

## LINEAR DISTRIBUTION DIAGRAM

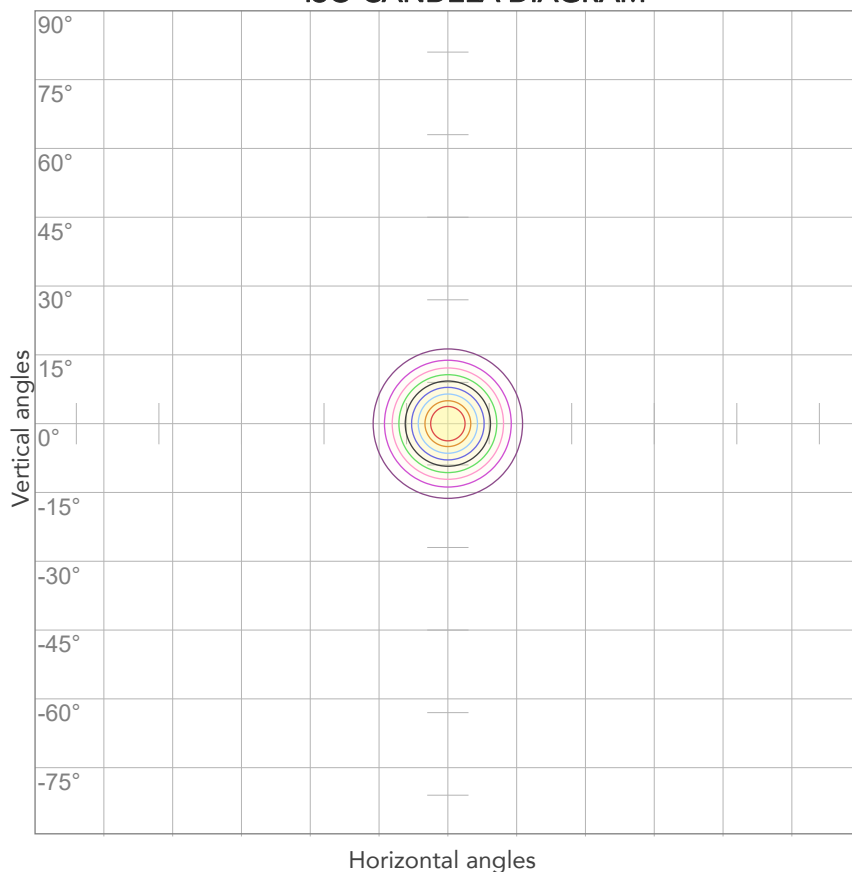


## ELECTRICAL SPECIFICATIONS

Input voltage	Input current	Input power	Power FC	Effeciency
228V	0,131A	28,0W	0,94	43lm/W

# ISO DIAGRAMS

## ISO CANDELA DIAGRAM



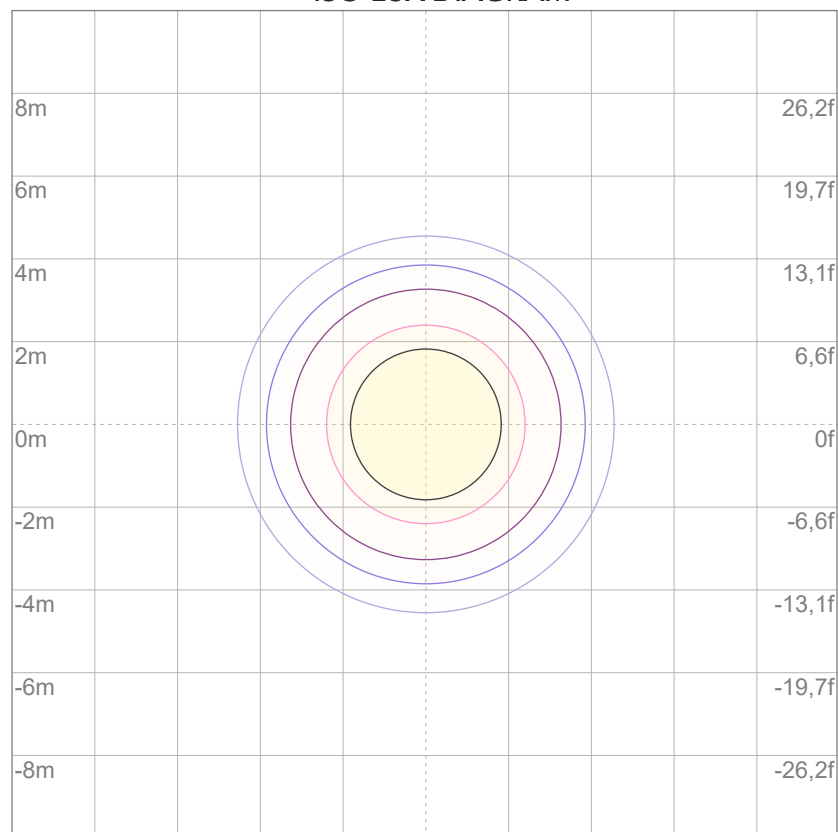
10%	712 cd
20%	1423 cd
30%	2135 cd
40%	2847 cd
50%	3559 cd
60%	4270 cd
70%	4982 cd
80%	5694 cd

### Conditions:

Number of c-planes: 2

Candela at center: 7117 cd

## ISO LUX DIAGRAM



3%	2,14 lx
5%	3,56 lx
10%	7,12 lx
30%	21,4 lx
50%	35,6 lx

### Conditions:

Number of c-planes: 2

Lux at center: 71,2 lx

*Lux distribution on a surface when lamp is mounted at 10 meters from the surface.*



Total lumen output:

1460 lm

Peak candela output:

8701 cd

Light quality:

CRI: 94,2

Color temperature:

3255 K

**PRODUCT NAME:**

ARCSPOTS VW

**MEASURAMENT CONDITIONS:**

Beam angle:

25°

Target:

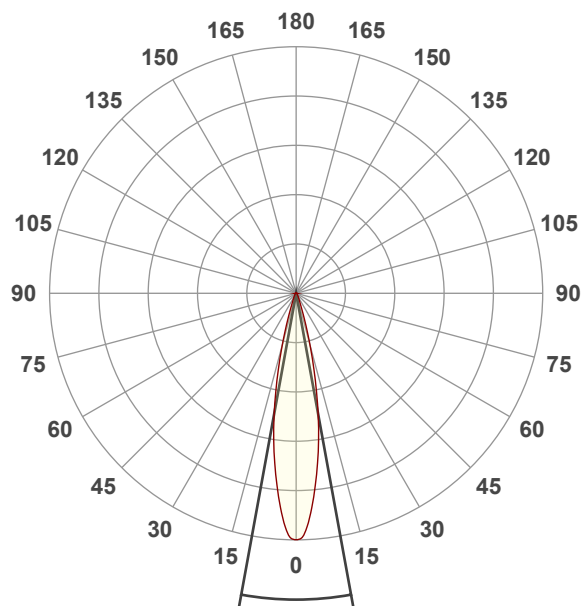
3200K

Operator:

Salvatore Giglio

Date and time:

20/02/2024 13:12:57

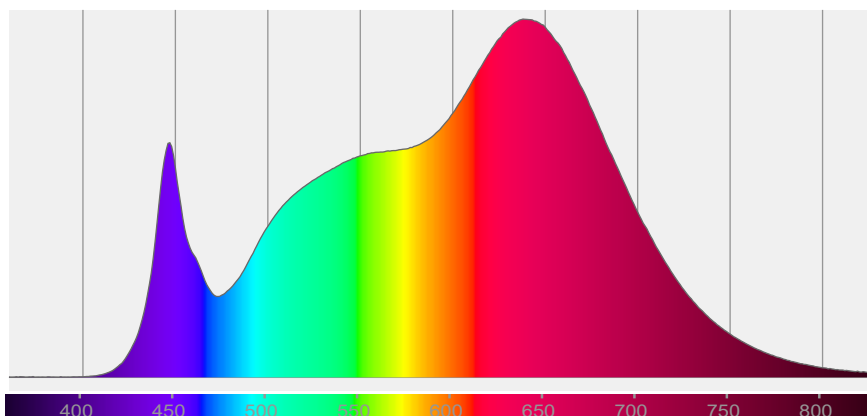


Beam angle 50%: 20,7°

Field angle 10%: 36,4°

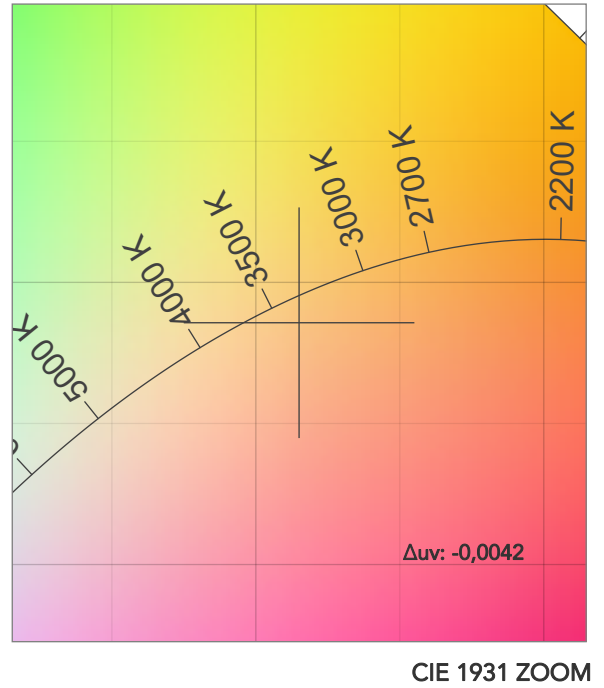
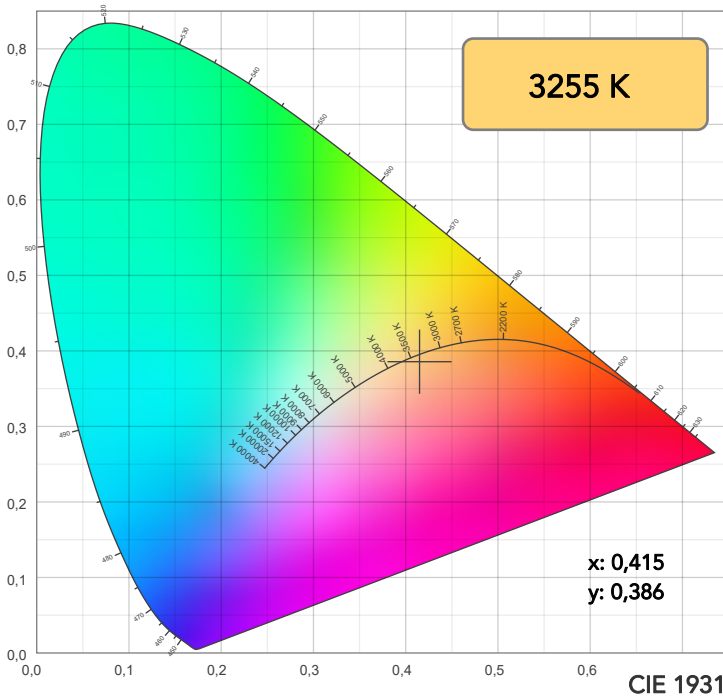
Cut off angle 2.5%: 52,9°

**Spectra**

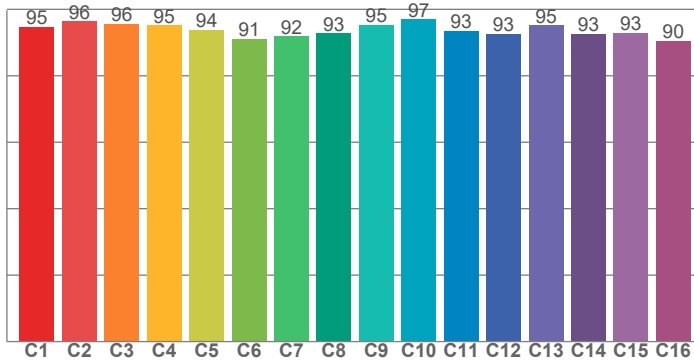




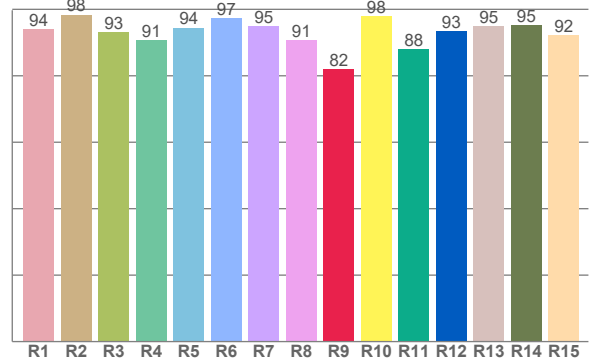
# COLOR DETAILS



TM30: 94,1



CRI: 94,2 (R1-R8)



CRI R values, only R1-R8 are used to calculate final CRI value

R1	R2	R3	R4	R5	R6	R7	R8	R9	R10	R11	R12	R13	R14	R15
93,9	98,3	93,0	90,7	94,5	97,2	94,9	90,7	82,0	98,0	88,0	93,4	95,0	95,1	92,3

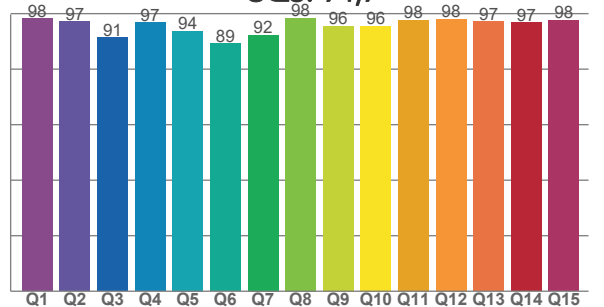
TM30 C values, 16 binned values out of total of 99 C values

C1	C2	C3	C4	C5	C6	C7	C8	C9	C10	C11	C12	C13	C14	C15	C16
94,8	96,4	95,6	95,2	93,7	91,2	91,8	92,8	95,3	97,0	93,4	92,7	95,2	92,6	93,0	90,5

CQS Q values

Q1	Q2	Q3	Q4	Q5	Q6	Q7	Q8	Q9	Q10	Q11	Q12	Q13	Q14	Q15
98,2	97,1	91,3	96,8	93,7	89,2	92,3	98,4	95,5	95,6	97,7	98,1	97,2	96,8	97,6

CQS: 94,7



## COLOR PARAMETERS

Color temperature	Color rendering index	Red component	Color fidelity	Color gamut	Color quality scale	Television lighting index	Color coordinate cie 1931	Color coordinate cie 1931	Color deviation from black body
CCT	CRI	CRI R9	TM30 Rf	TM30 Rg	CQS	TLCI	x	y	Δuv
3255 K	94,2	82,0	94,1	106,1	94,7	96	0,415	0,386	-0,0042

## TM30 DETAILS

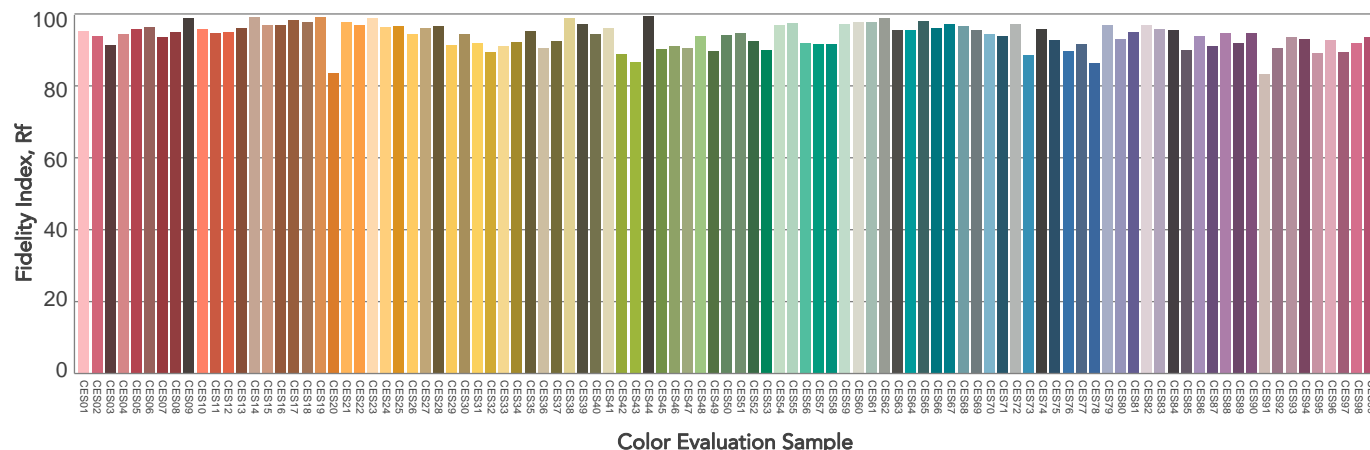
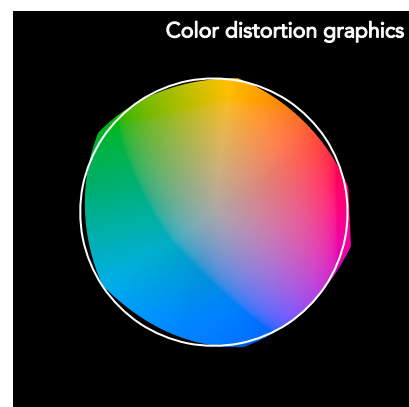
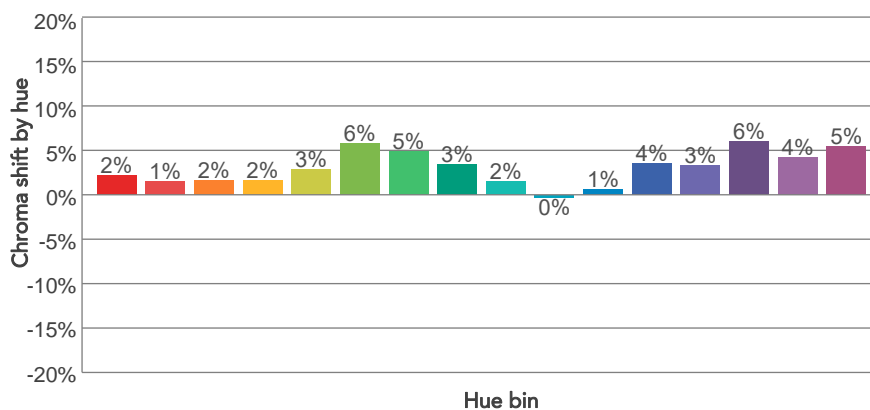
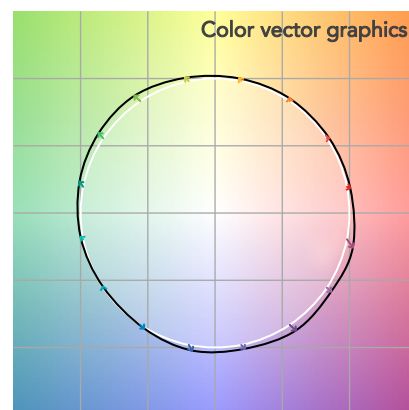
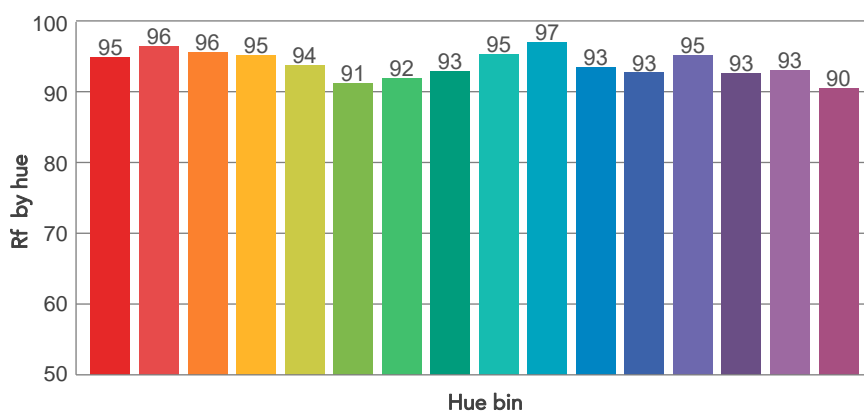
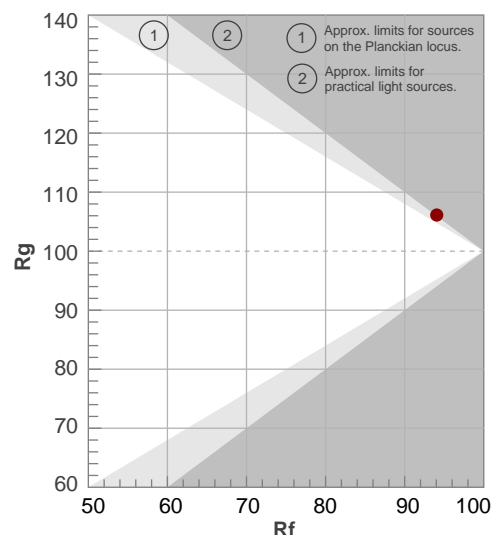
**Rf 94,1**

Fidelity index Rf

**Rg 106,1**

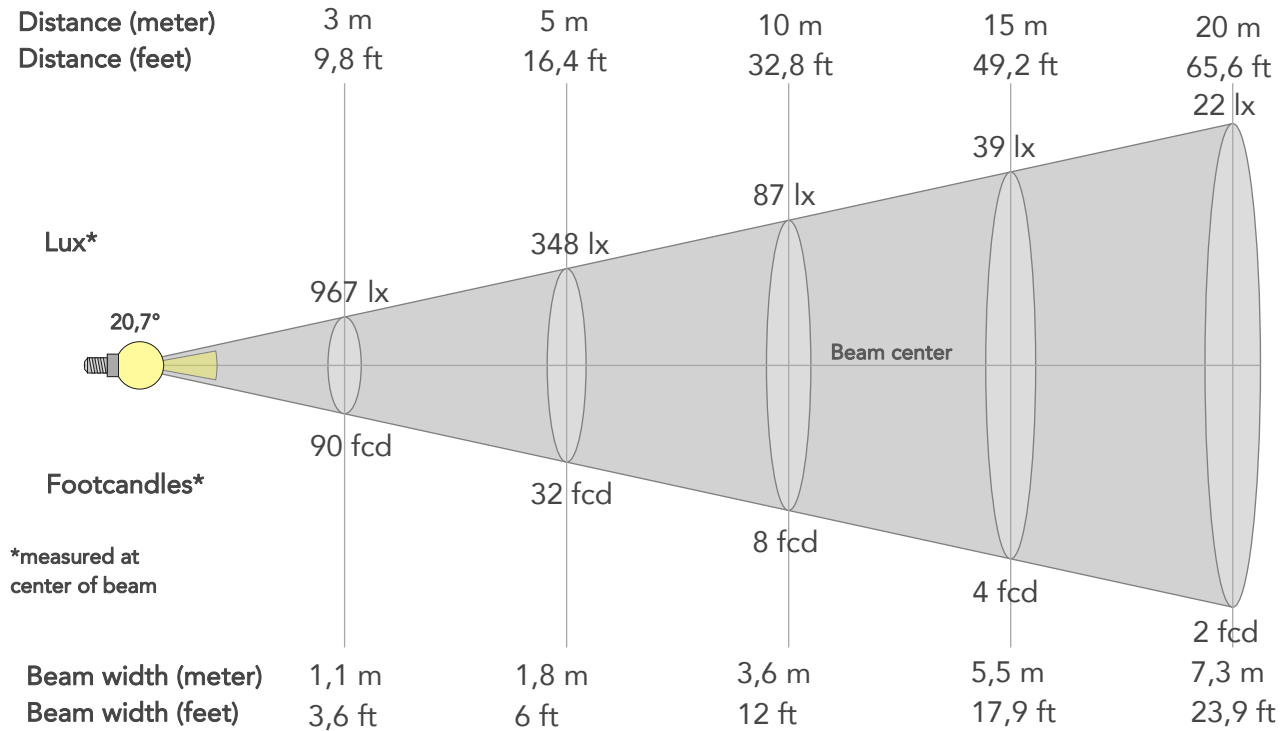
Gammut index

Hue Bin	R <sub>f</sub>	Graphic shifts (%)	
		Chroma	Hue
1	95	2%	-1%
2	96	1%	-1%
3	96	2%	1%
4	95	2%	2%
5	94	3%	2%
6	91	6%	1%
7	92	5%	-1%
8	93	3%	-3%
9	95	2%	-2%
10	97	0%	-1%
11	93	1%	4%
12	93	4%	3%
13	95	3%	2%
14	93	6%	1%
15	93	4%	0%
16	90	5%	-5%



# BEAM DETAILS

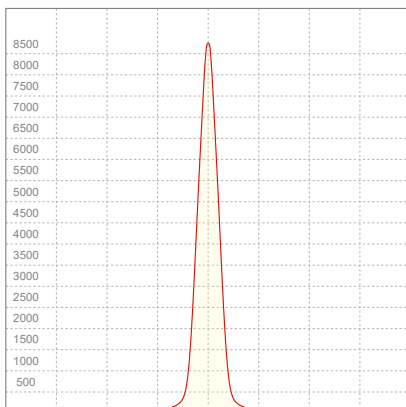
Beam angle 50%	Field angle 10%	Cut off angle 2,5%	Intensity ratio in 120° cone	Intensity ratio in 90° cone
20,7°	36,4°	52,9°	97,1%	93,5%



## BEAM INTENSITIES AND WIDTHS

Distance	1m	2m	3m	4m	5m	7,5m	10m	15m	20m	25m	30m	40m	50m
Distance	3,3ft	6,6ft	9,8ft	13,1ft	16,4ft	24,6ft	32,8ft	49,2ft	65,6ft	82ft	98,4ft	131,2ft	164ft
Lux	8701lx	2175lx	967lx	544lx	348lx	155lx	87lx	39lx	22lx	14lx	10lx	5lx	3lx
Footcand.	808fcd	202fcd	90fcd	51fcd	32fcd	14fcd	8fcd	4fcd	2fcd	1fcd	1fcd	1fcd	0fcd
Beam wid.	0,4m	0,7m	1,1m	1,5m	1,8m	2,7m	3,6m	5,5m	7,3m	9,1m	10,9m	14,6m	18,2m
Beam wid.	1,2ft	2,4ft	3,6ft	4,8ft	6ft	9ft	12ft	17,9ft	23,9ft	29,9ft	35,9ft	47,8ft	59,8ft

## LINEAR DISTRIBUTION DIAGRAM

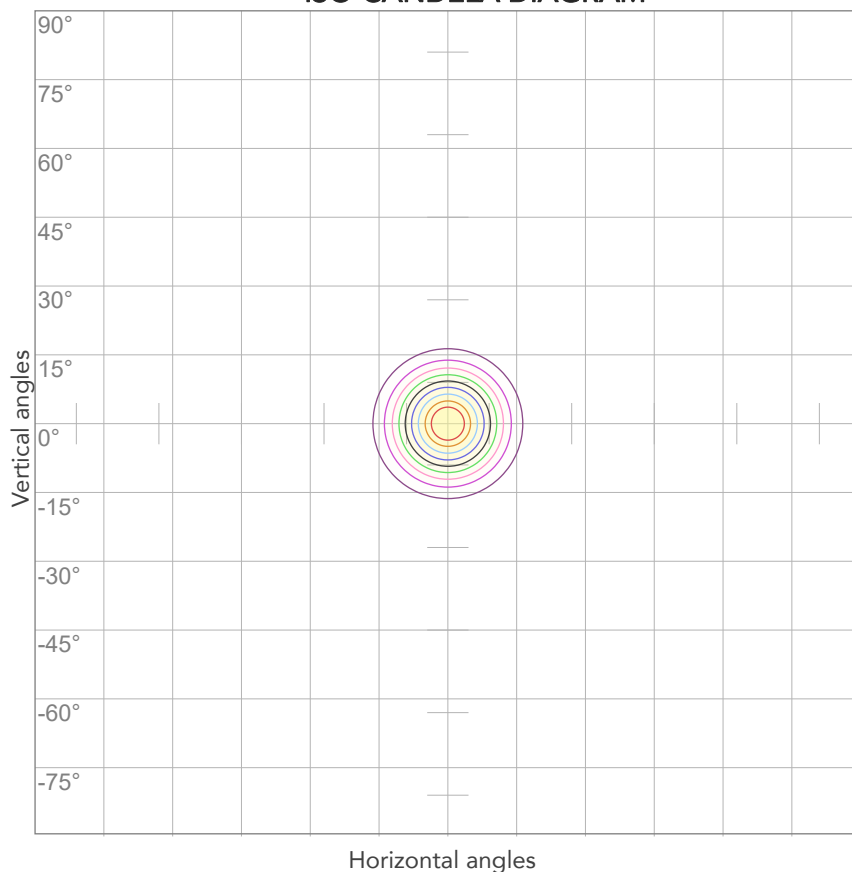


## ELECTRICAL SPECIFICATIONS

Input voltage	Input current	Input power	Power FC	Efficiency
228V	0,145A	31,6W	0,96	46lm/W

# ISO DIAGRAMS

## ISO CANDELA DIAGRAM



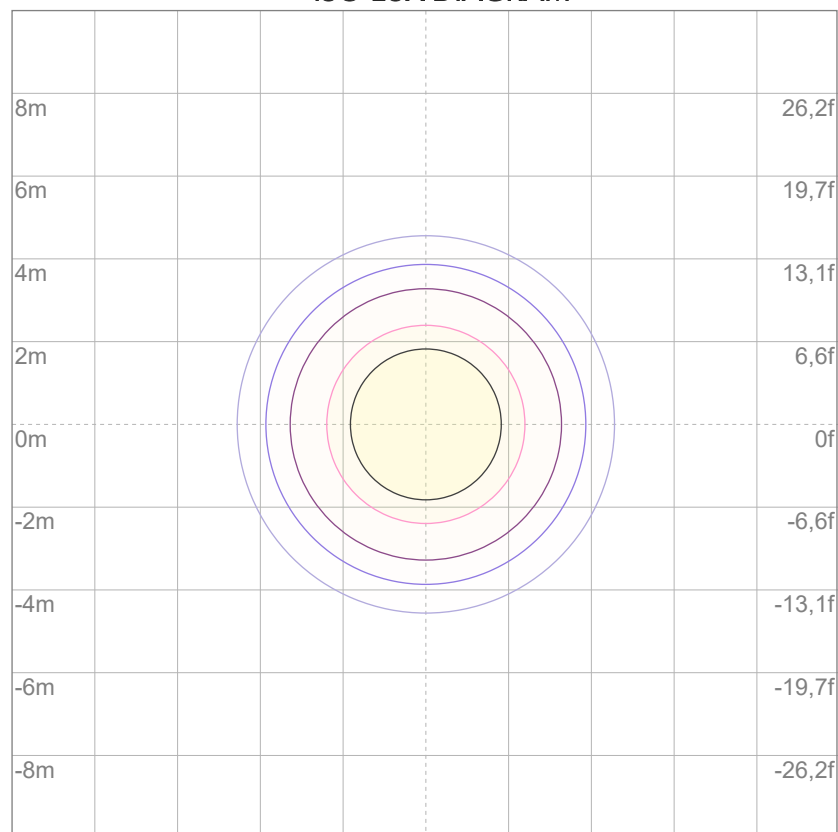
10%	870 cd
20%	1740 cd
30%	2610 cd
40%	3480 cd
50%	4350 cd
60%	5220 cd
70%	6091 cd
80%	6961 cd

### Conditions:

Number of c-planes: 2

Candela at center: 8701 cd

## ISO LUX DIAGRAM



3%	2,61 lx
5%	4,35 lx
10%	8,70 lx
30%	26,1 lx
50%	43,5 lx

### Conditions:

Number of c-planes: 2

Lux at center: 87,0 lx

*Lux distribution on a surface when lamp is mounted at 10 meters from the surface.*



Total lumen output:

1575 lm

Peak candela output:

9343 cd

Light quality:

CRI: 93,7

Color temperature:

4013 K

**PRODUCT NAME:**

ARCSPOTS VW

**MEASURAMENT CONDITIONS:**

Beam angle:

25°

Target:

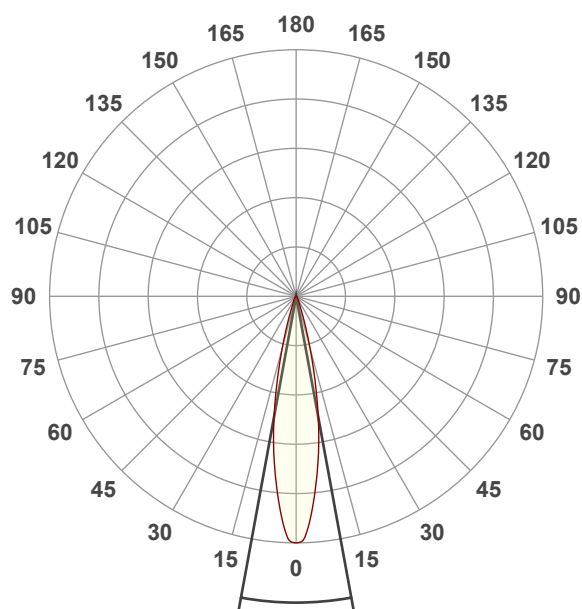
4000K

Operator:

Salvatore Giglio

Date and time:

20/02/2024 13:08:14

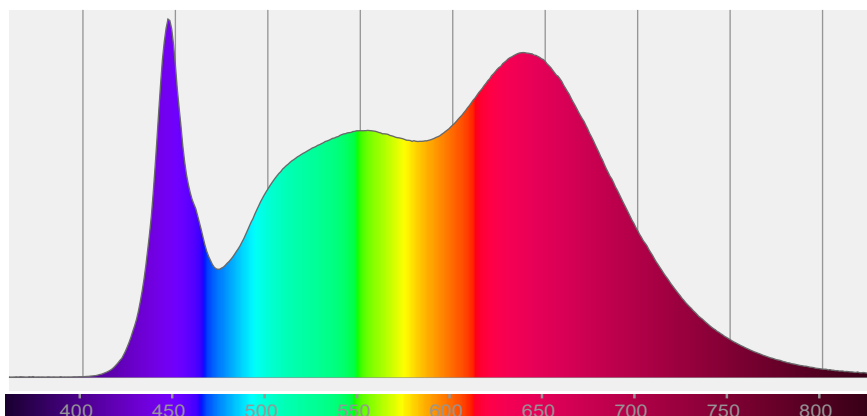


Beam angle 50%: 20,8°

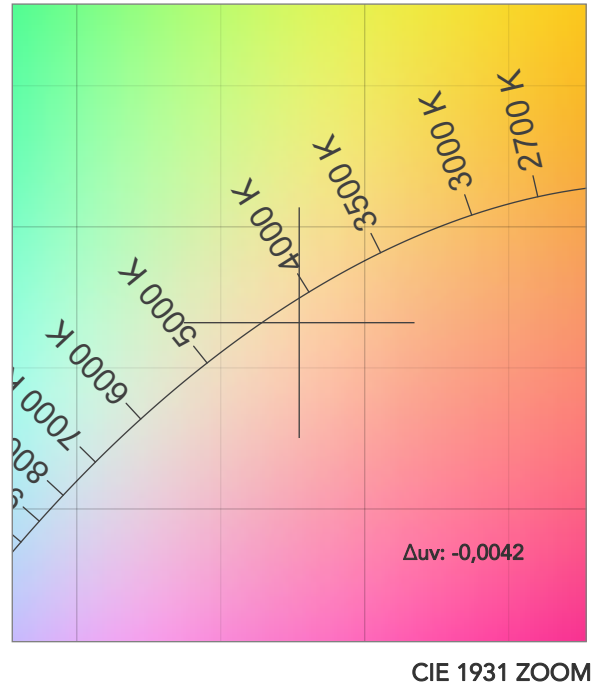
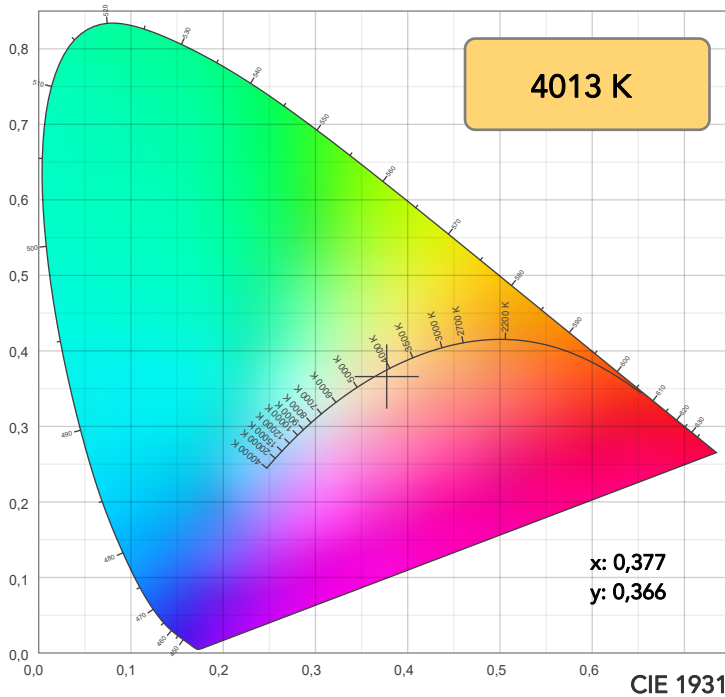
Field angle 10%: 36,4°

Cut off angle 2.5%: 53°

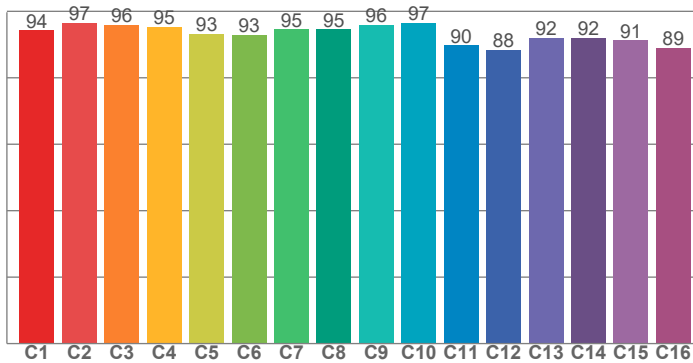
**Spectra**



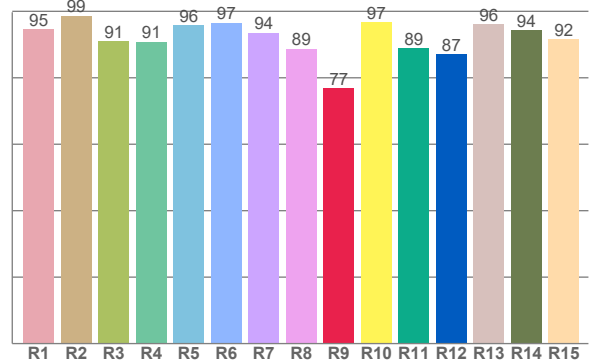
# COLOR DETAILS



**TM30: 93,5**



**CRI: 93,7 (R1-R8)**



CRI R values, only R1-R8 are used to calculate final CRI value

R1	R2	R3	R4	R5	R6	R7	R8	R9	R10	R11	R12	R13	R14	R15
94,6	98,7	91,1	90,9	95,8	96,5	93,6	88,8	76,8	96,6	88,9	87,1	96,1	94,3	91,6

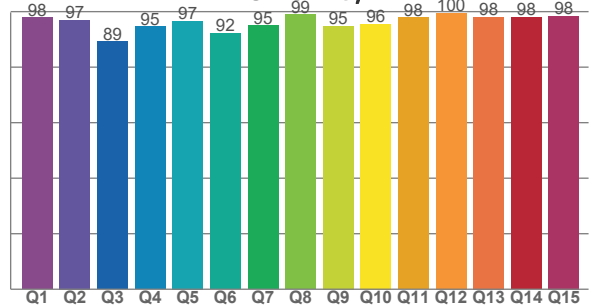
TM30 C values, 16 binned values out of total of 99 C values

C1	C2	C3	C4	C5	C6	C7	C8	C9	C10	C11	C12	C13	C14	C15	C16
94,3	96,6	95,9	95,4	93,1	92,8	94,6	94,6	95,9	96,5	89,8	88,4	92,0	92,0	91,3	88,9

CQS Q values

Q1	Q2	Q3	Q4	Q5	Q6	Q7	Q8	Q9	Q10	Q11	Q12	Q13	Q14	Q15
97,9	97,0	89,3	94,6	96,7	92,2	95,0	98,9	94,8	95,6	97,8	99,5	98,0	97,9	98,5

**CQS: 95,4**



## COLOR PARAMETERS

Color temperature	Color rendering index	Red component	Color fidelity	Color gamut	Color quality scale	Television lighting index	Color coordinate cie 1931	Color coordinate cie 1931	Color deviation from black body
CCT	CRI	CRI R9	TM30 Rf	TM30 Rg	CQS	TLCI	x	y	$\Delta uv$
4013 K	93,7	76,8	93,5	105,6	95,4	97	0,377	0,366	-0,0042

## TM30 DETAILS

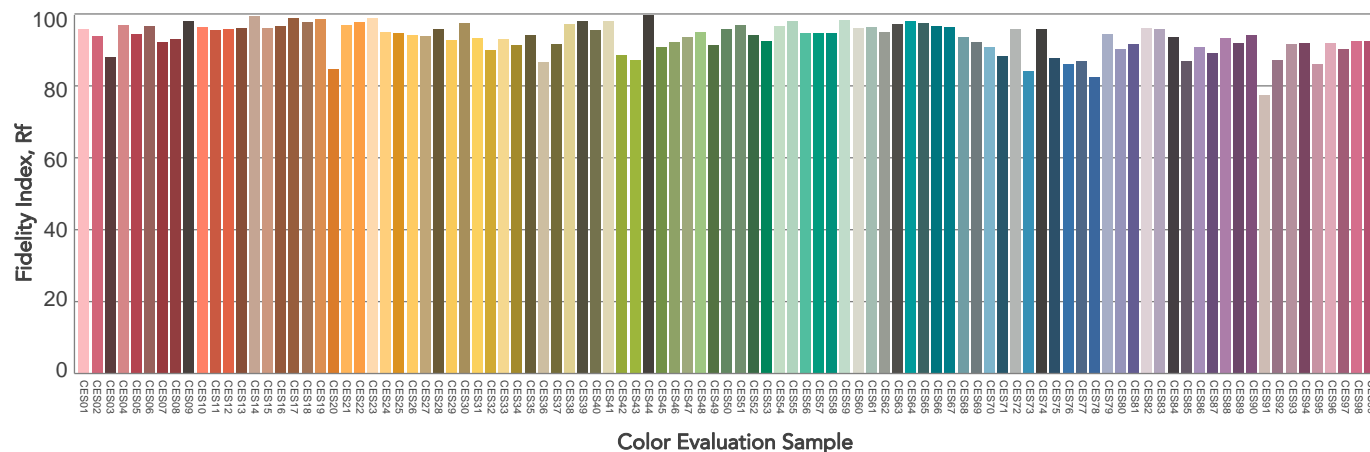
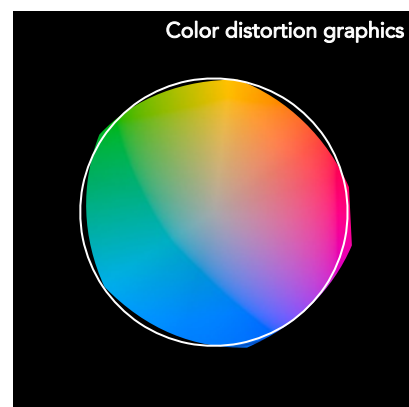
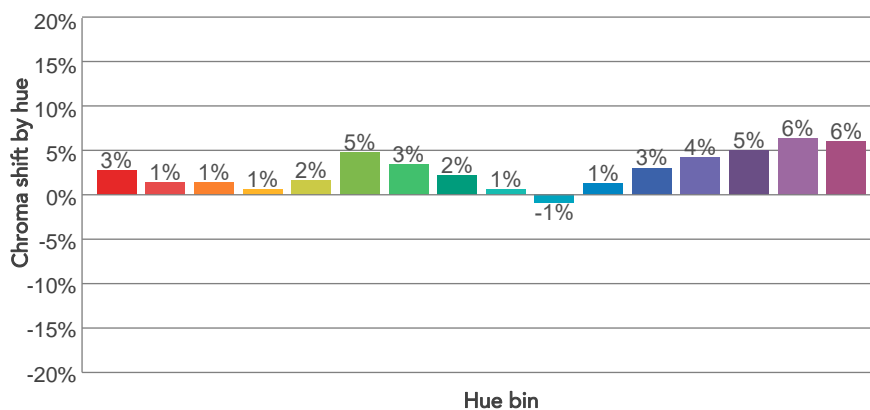
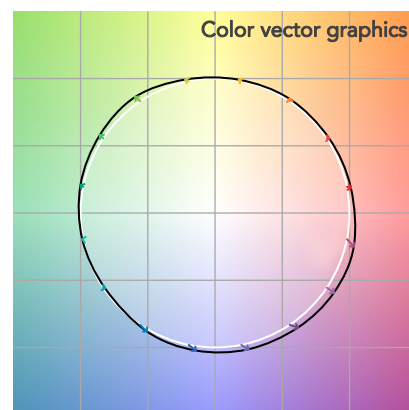
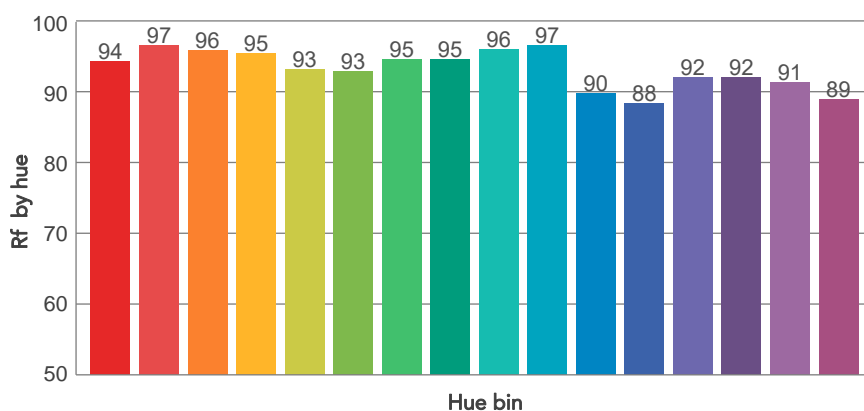
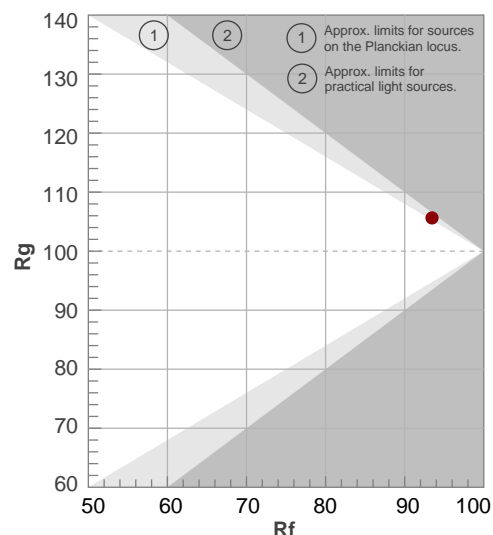
**Rf 93,5**

Fidelity index Rf

**Rg 105,6**

Gammut index

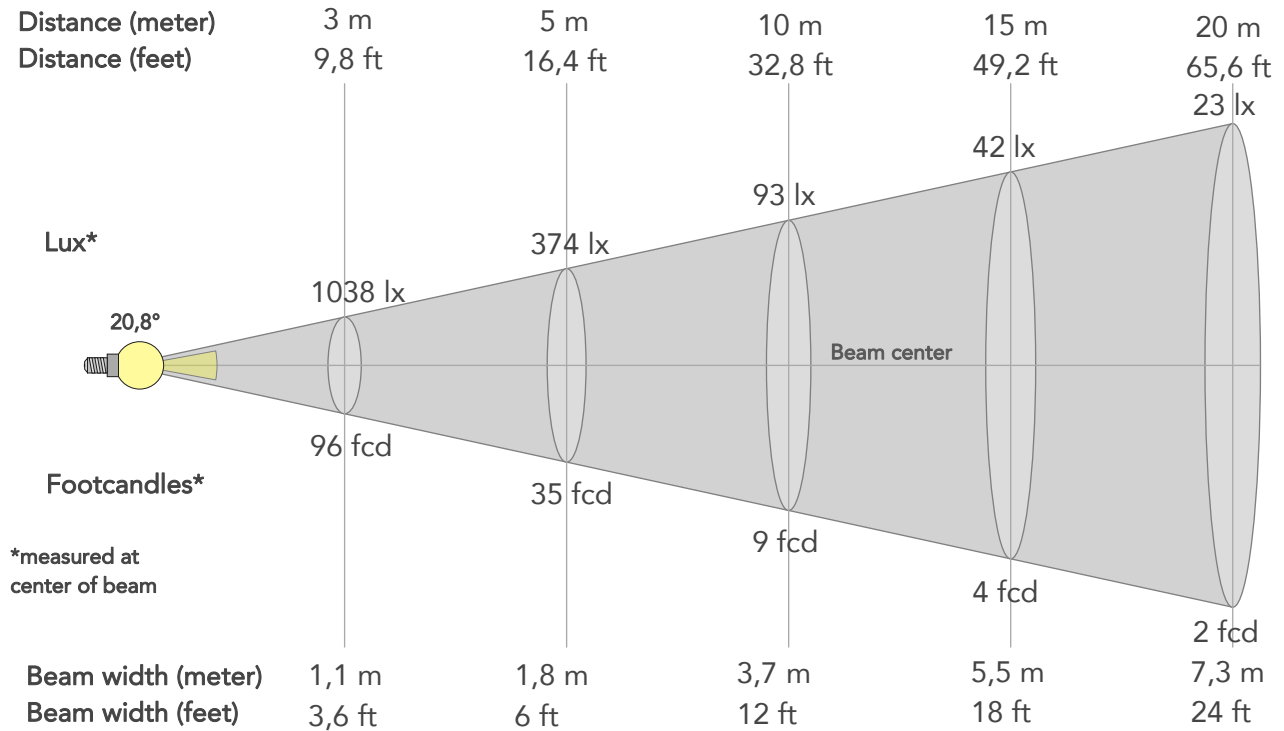
Hue Bin	R <sub>f</sub>	Graphic shifts (%)	
		Chroma	Hue
1	94	3%	-1%
2	97	1%	-1%
3	96	1%	1%
4	95	1%	2%
5	93	2%	2%
6	93	5%	1%
7	95	3%	-1%
8	95	2%	-1%
9	96	1%	0%
10	97	-1%	1%
11	90	1%	7%
12	88	3%	6%
13	92	4%	5%
14	92	5%	4%
15	91	6%	0%
16	89	6%	-4%



# BEAM DETAILS



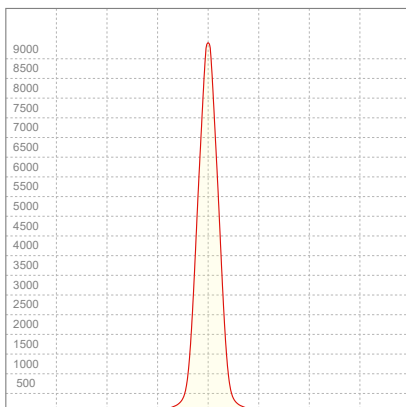
Beam angle 50%	Field angle 10%	Cut off angle 2,5%	Intensity ratio in 120° cone	Intensity ratio in 90° cone
20,8°	36,4°	53°	97,2%	93,6%



## BEAM INTENSITIES AND WIDTHS

Distance	1m	2m	3m	4m	5m	7,5m	10m	15m	20m	25m	30m	40m	50m
Distance	3,3ft	6,6ft	9,8ft	13,1ft	16,4ft	24,6ft	32,8ft	49,2ft	65,6ft	82ft	98,4ft	131,2ft	164ft
Lux	9343lx	2336lx	1038lx	584lx	374lx	166lx	93lx	42lx	23lx	15lx	10lx	6lx	4lx
Footcand.	868fcd	217fcd	96fcd	54fcd	35fcd	15fcd	9fcd	4fcd	2fcd	1fcd	1fcd	1fcd	0fcd
Beam wid.	0,4m	0,7m	1,1m	1,5m	1,8m	2,7m	3,7m	5,5m	7,3m	9,2m	11m	14,6m	18,3m
Beam wid.	1,2ft	2,4ft	3,6ft	4,8ft	6ft	9ft	12ft	18ft	24ft	30ft	36ft	48ft	60,1ft

## LINEAR DISTRIBUTION DIAGRAM



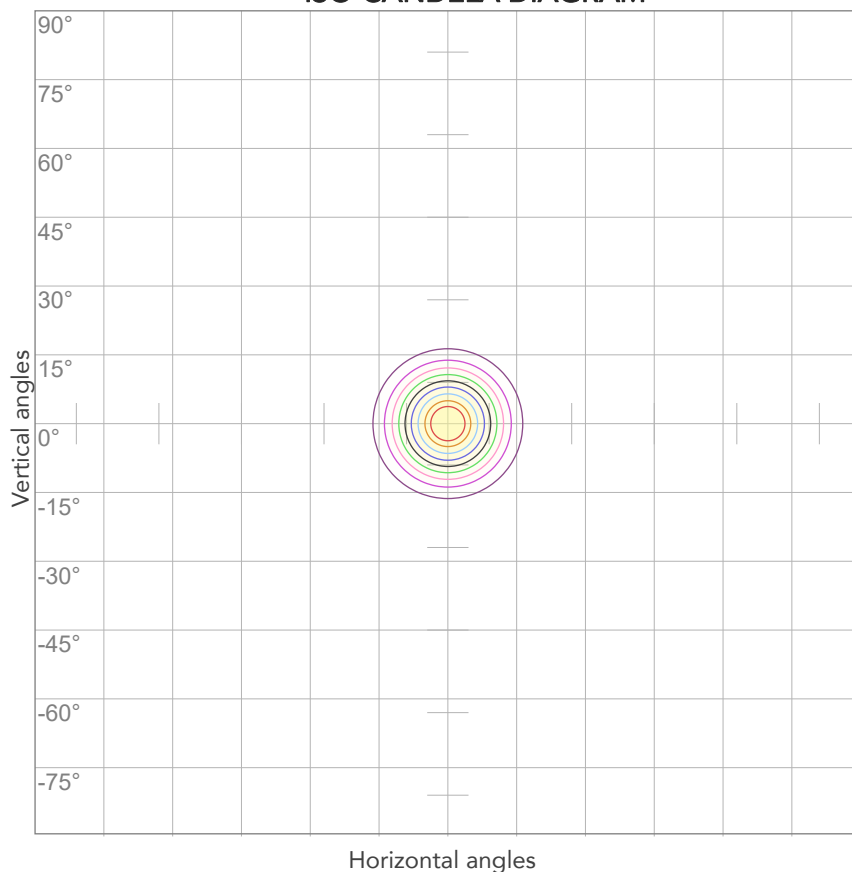
## ELECTRICAL SPECIFICATIONS

Input voltage	Input current	Input power	Power FC	Effeciency
228V	0,145A	31,5W	0,95	50lm/W



# ISO DIAGRAMS

## ISO CANDELA DIAGRAM



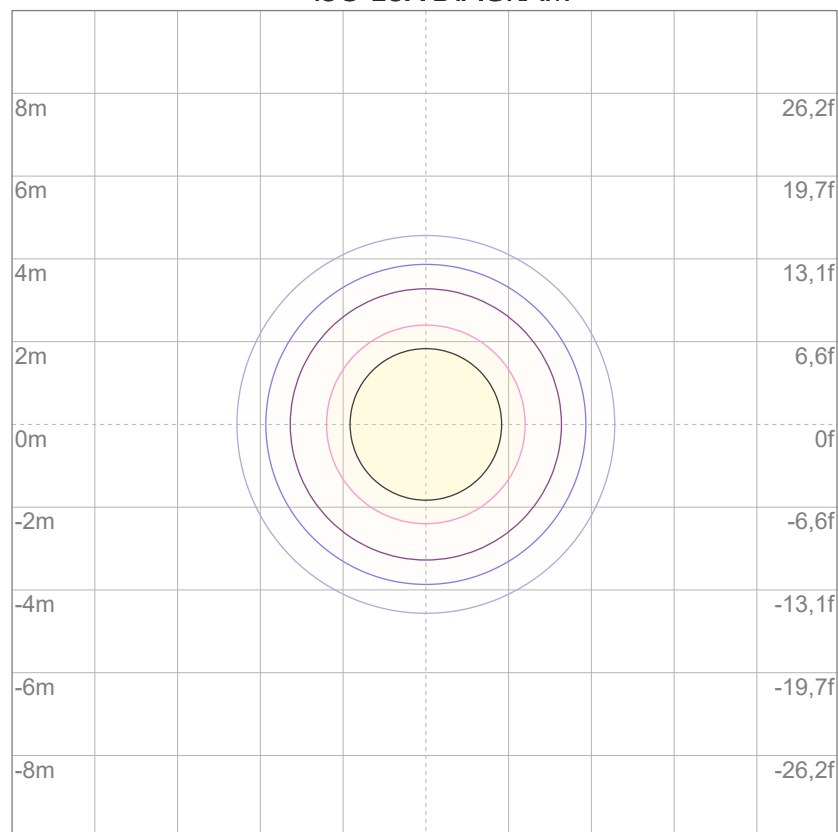
10%	934 cd
20%	1869 cd
30%	2803 cd
40%	3737 cd
50%	4672 cd
60%	5606 cd
70%	6540 cd
80%	7474 cd

### Conditions:

Number of c-planes: 2

Candela at center: 9343 cd

## ISO LUX DIAGRAM



3%	2,80 lx
5%	4,67 lx
10%	9,34 lx
30%	28,0 lx
50%	46,7 lx

### Conditions:

Number of c-planes: 2

Lux at center: 93,4 lx

*Lux distribution on a surface when lamp is mounted at 10 meters from the surface.*



Total lumen output:

1793 lm

Peak candela output:

10638 cd

Light quality:

CRI: 94,0

Color temperature:

5646 K

**PRODUCT NAME:**

ARCSPOTS VW

**MEASURAMENT CONDITIONS:**

Beam angle:

25°

Target:

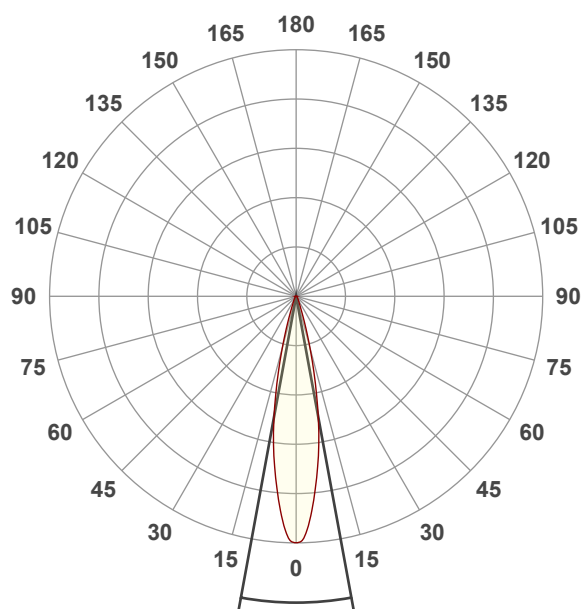
5600K

Operator:

Salvatore Giglio

Date and time:

20/02/2024 13:09:57

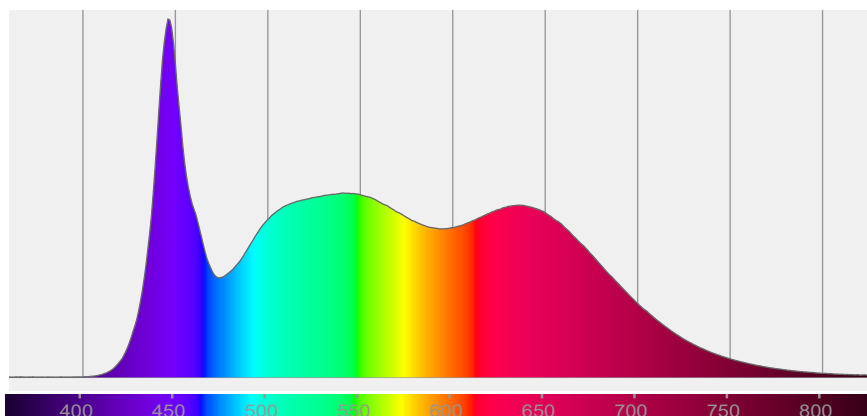


Beam angle 50%: 20,8°

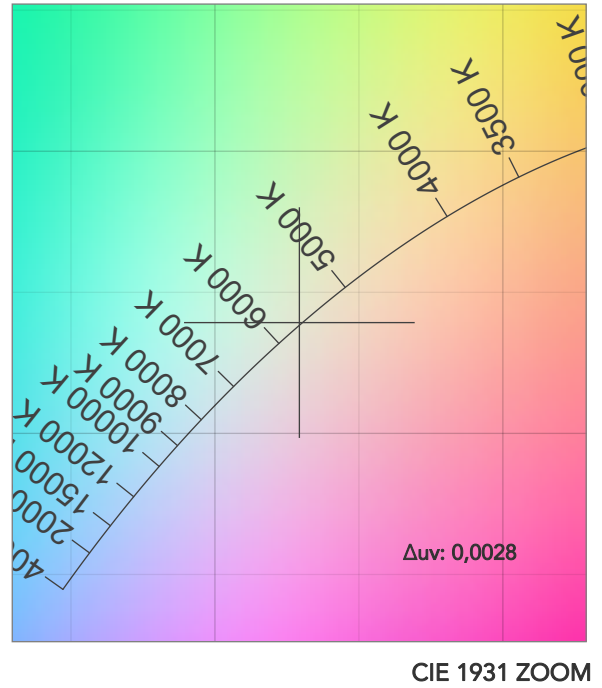
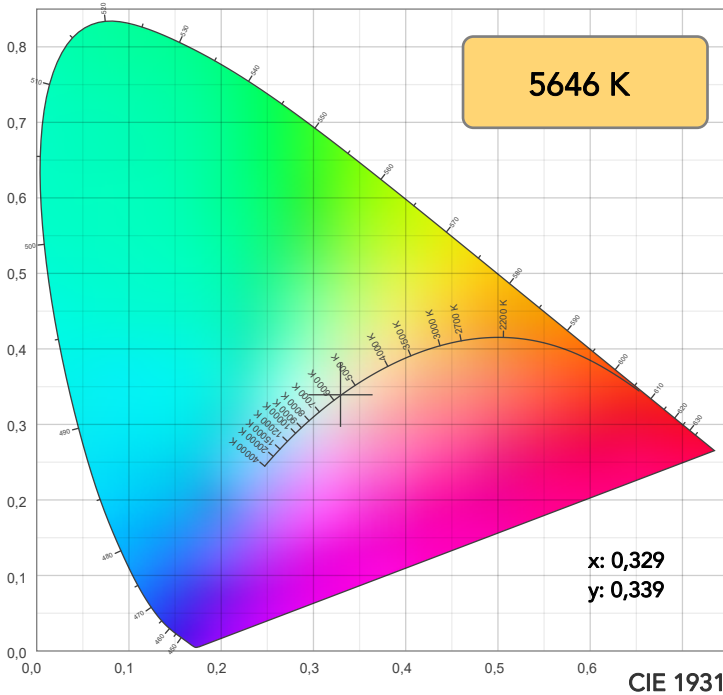
Field angle 10%: 36,5°

Cut off angle 2.5%: 52,9°

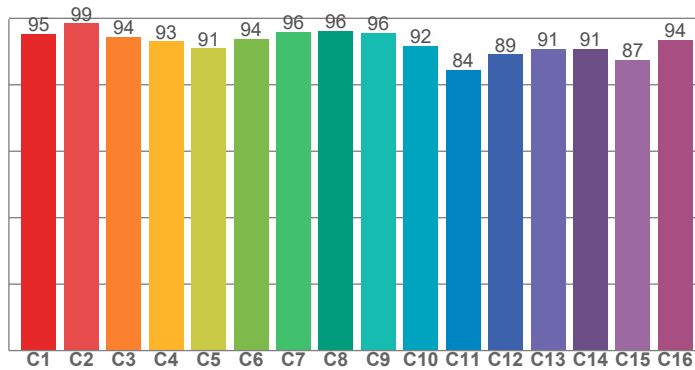
**Spectra**



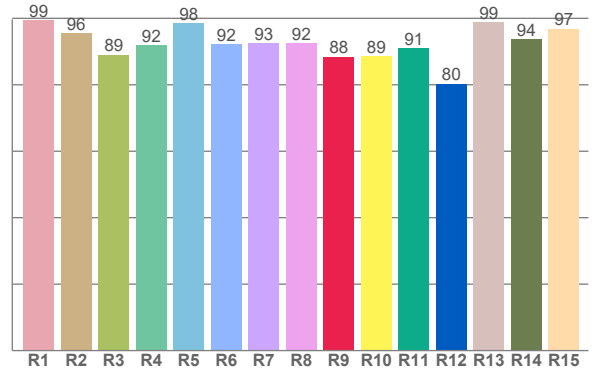
# COLOR DETAILS



TM30: 92,6



CRI: 94,0 (R1-R8)



CRI R values, only R1-R8 are used to calculate final CRI value

R1	R2	R3	R4	R5	R6	R7	R8	R9	R10	R11	R12	R13	R14	R15
99,5	95,6	89,0	91,9	98,5	92,1	92,6	92,5	88,4	88,6	91,0	80,3	98,8	93,7	96,9

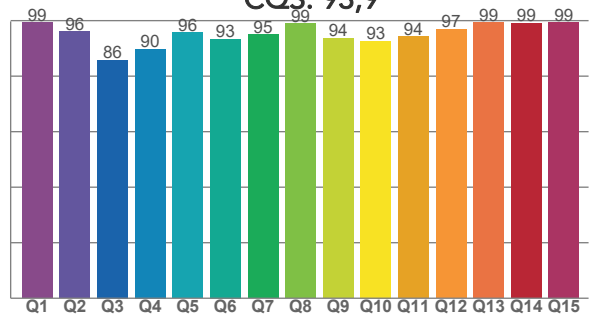
TM30 C values, 16 binned values out of total of 99 C values

C1	C2	C3	C4	C5	C6	C7	C8	C9	C10	C11	C12	C13	C14	C15	C16
95,3	98,5	94,5	93,1	91,0	93,8	95,9	96,2	95,7	91,7	84,5	89,2	90,9	90,9	87,5	93,6

CQS Q values

Q1	Q2	Q3	Q4	Q5	Q6	Q7	Q8	Q9	Q10	Q11	Q12	Q13	Q14	Q15
99,3	96,0	85,8	89,7	95,7	93,3	95,0	99,0	93,7	92,6	94,2	96,9	99,4	99,0	99,2

CQS: 93,9



## COLOR PARAMETERS

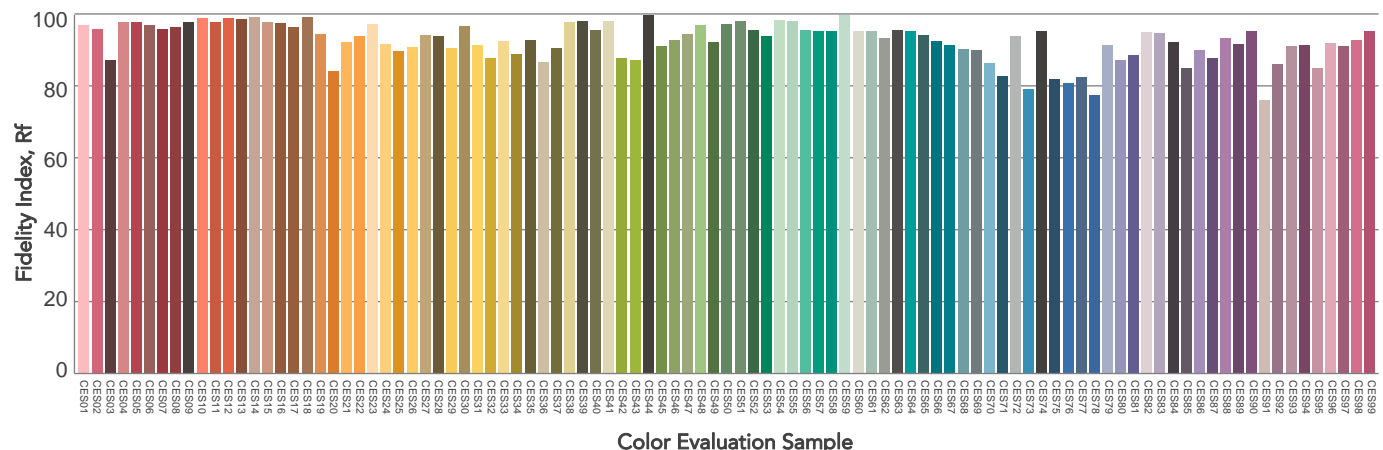
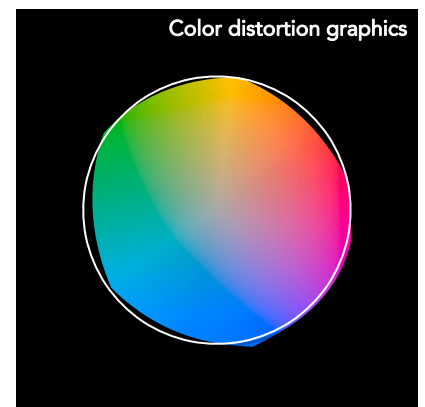
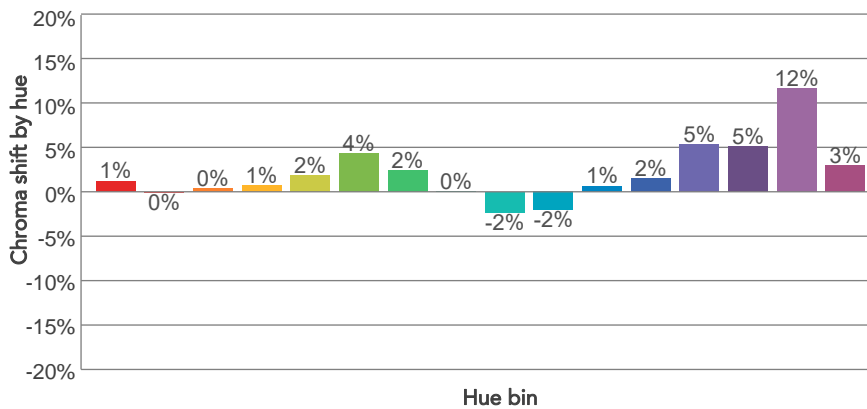
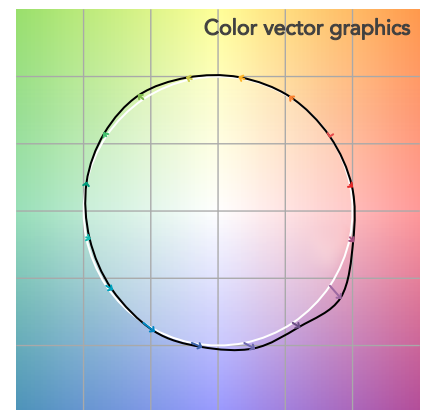
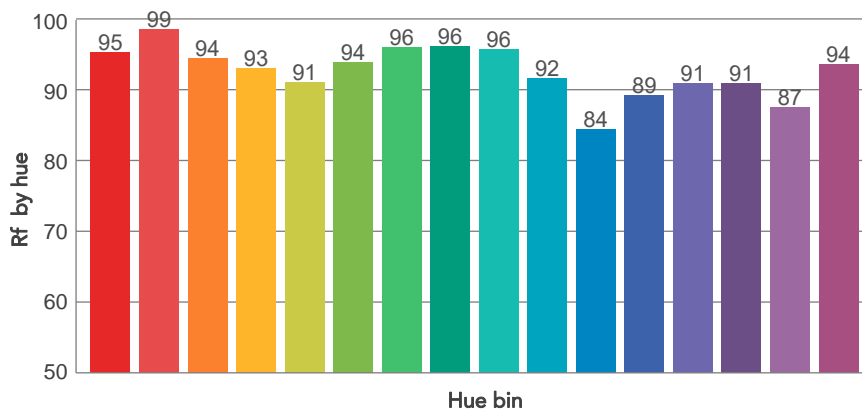
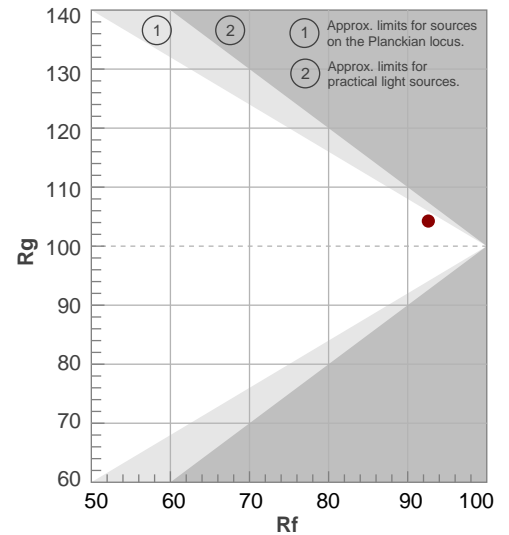
Color temperature	Color rendering index	Red component	Color fidelity	Color gamut	Color quality scale	Television lighting index	Color coordinate cie 1931	Color coordinate cie 1931	Color deviation from black body
CCT	CRI	CRI R9	TM30 Rf	TM30 Rg	CQS	TLCI	x	y	$\Delta uv$
5646 K	94,0	88,4	92,6	104,3	93,9	98	0,329	0,339	0,0028

# TM30 DETAILS

**Rf 92,6**  
Fidelity index Rf

**Rg 104,3**  
Gammut index

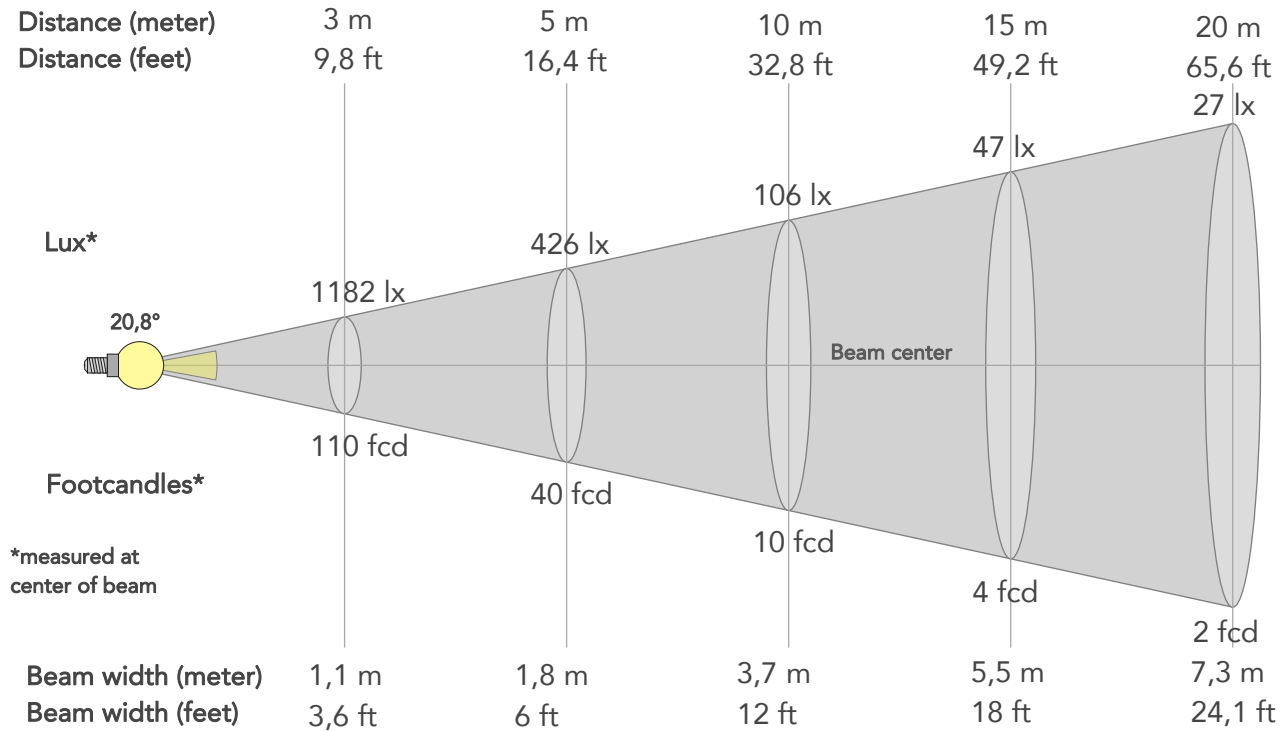
Hue Bin	R <sub>f</sub>	Graphic shifts (%)	
		Chroma	Hue
1	95	1%	-2%
2	99	0%	0%
3	94	0%	3%
4	93	1%	4%
5	91	2%	3%
6	94	4%	1%
7	96	2%	-1%
8	96	0%	-1%
9	96	-2%	1%
10	92	-2%	5%
11	84	1%	10%
12	89	2%	7%
13	91	5%	6%
14	91	5%	2%
15	87	12%	-3%
16	94	3%	-2%



# BEAM DETAILS



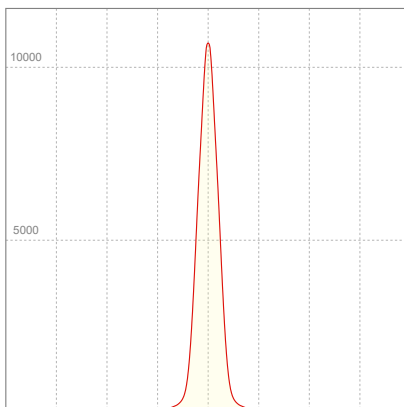
Beam angle 50%	Field angle 10%	Cut off angle 2,5%	Intensity ratio in 120° cone	Intensity ratio in 90° cone
20,8°	36,5°	52,9°	97,2%	93,6%



## BEAM INTENSITIES AND WIDTHS

Distance	1m	2m	3m	4m	5m	7,5m	10m	15m	20m	25m	30m	40m	50m
Distance	3,3ft	6,6ft	9,8ft	13,1ft	16,4ft	24,6ft	32,8ft	49,2ft	65,6ft	82ft	98,4ft	131,2ft	164ft
Lux	10638lx	2660lx	1182lx	665lx	426lx	189lx	106lx	47lx	27lx	17lx	12lx	7lx	4lx
Footcand.	988fcd	247fcd	110fcd	62fcd	40fcd	18fcd	10fcd	4fcd	2fcd	2fcd	1fcd	1fcd	0fcd
Beam wid.	0,4m	0,7m	1,1m	1,5m	1,8m	2,8m	3,7m	5,5m	7,3m	9,2m	11m	14,7m	18,3m
Beam wid.	1,2ft	2,4ft	3,6ft	4,8ft	6ft	9ft	12ft	18ft	24,1ft	30,1ft	36,1ft	48,1ft	60,1ft

## LINEAR DISTRIBUTION DIAGRAM

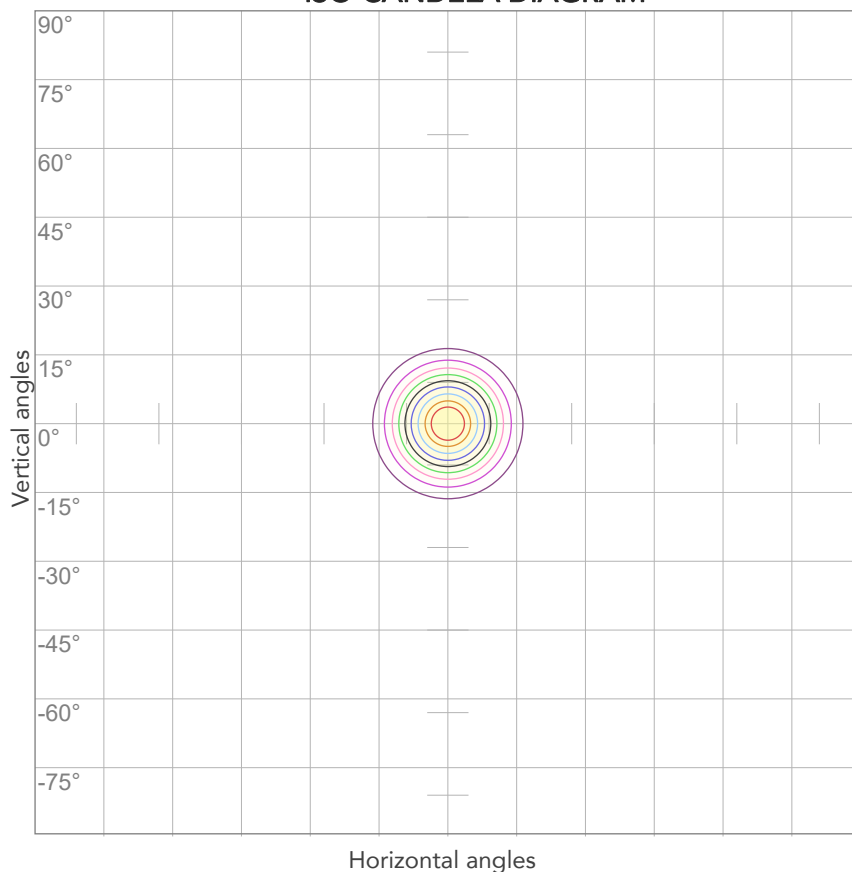


## ELECTRICAL SPECIFICATIONS

Input voltage	Input current	Input power	Power FC	Effeciency
228V	0,145A	31,7W	0,96	57lm/W

# ISO DIAGRAMS

## ISO CANDELA DIAGRAM



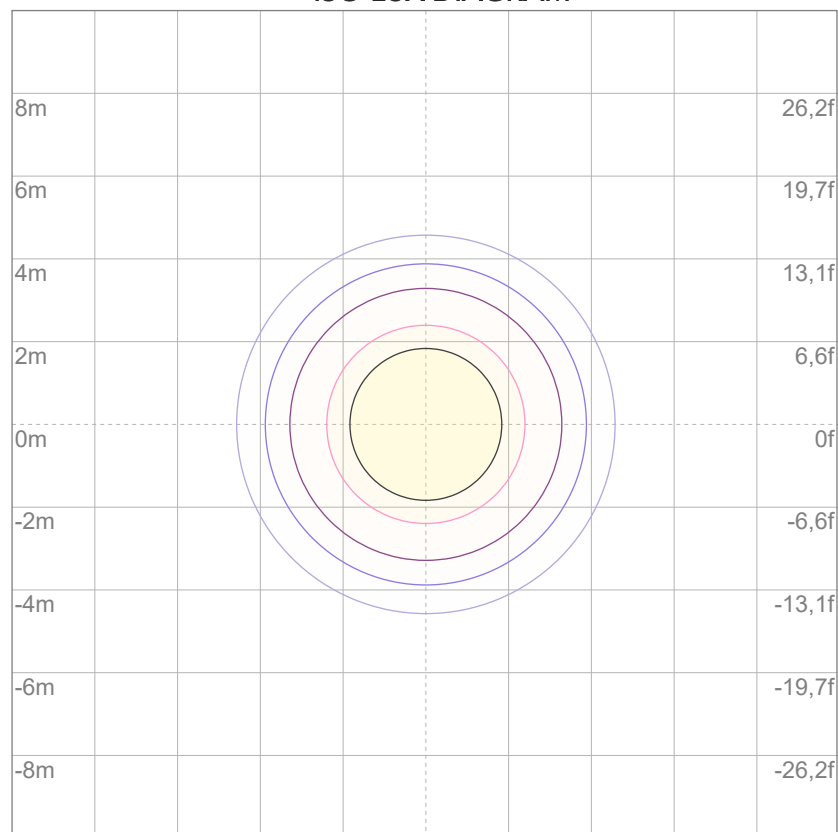
10%	1064 cd
20%	2128 cd
30%	3192 cd
40%	4255 cd
50%	5319 cd
60%	6383 cd
70%	7447 cd
80%	8511 cd

### Conditions:

Number of c-planes: 2

Candela at center: 10638 cd

## ISO LUX DIAGRAM



3%	3,19 lx
5%	5,32 lx
10%	10,6 lx
30%	31,9 lx
50%	53,2 lx

### Conditions:

Number of c-planes: 2

Lux at center: 106 lx

*Lux distribution on a surface when lamp is mounted at 10 meters from the surface.*



Total lumen output:

1602 lm

Peak candela output:

9501 cd

Light quality:

CRI: 93,0

Color temperature:

6664 K

**PRODUCT NAME:**

ARCSPOTS VW

**MEASURAMENT CONDITIONS:**

Beam angle:

25°

Target:

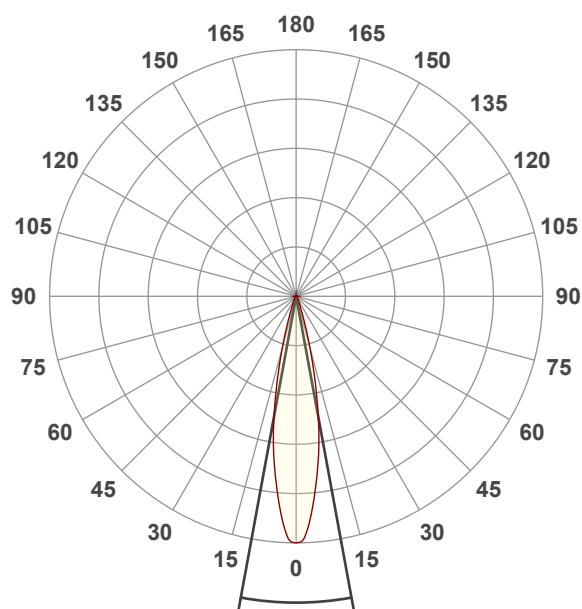
6500K

Operator:

Salvatore Giglio

Date and time:

20/02/2024 13:15:55

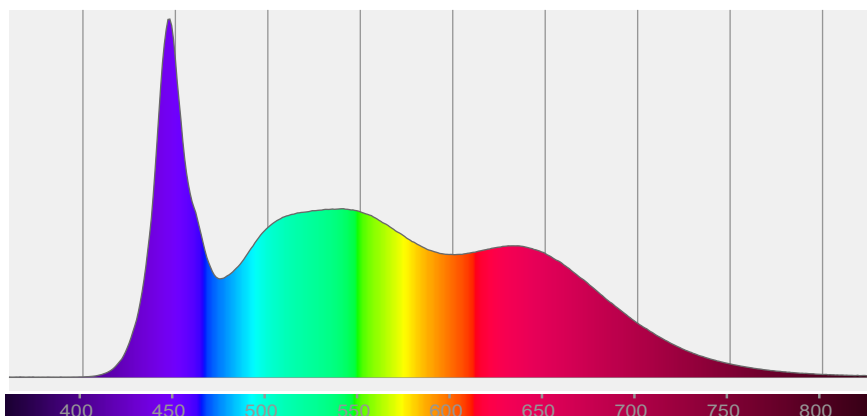


Beam angle 50%: 20,8°

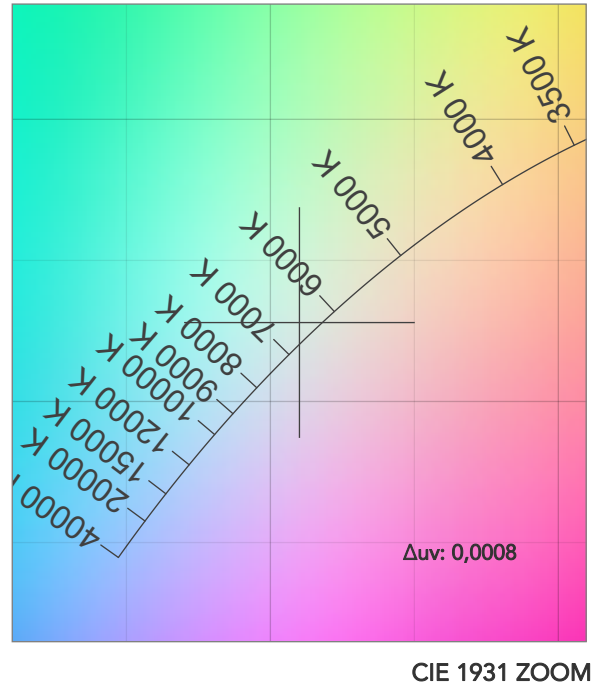
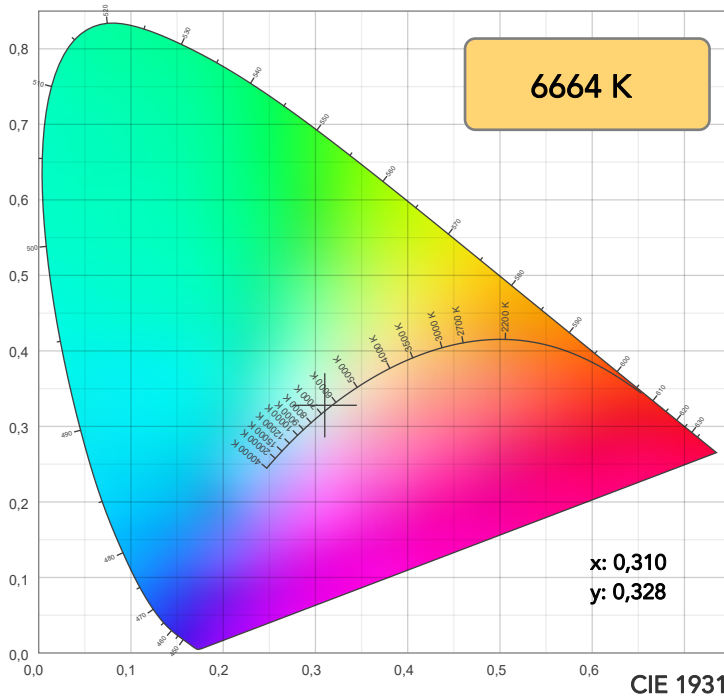
Field angle 10%: 36,5°

Cut off angle 2.5%: 52,9°

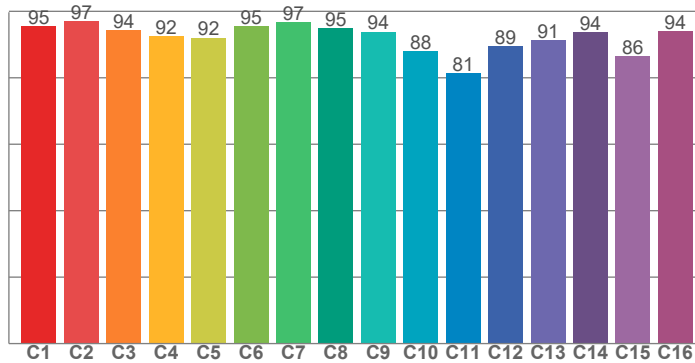
**Spectra**



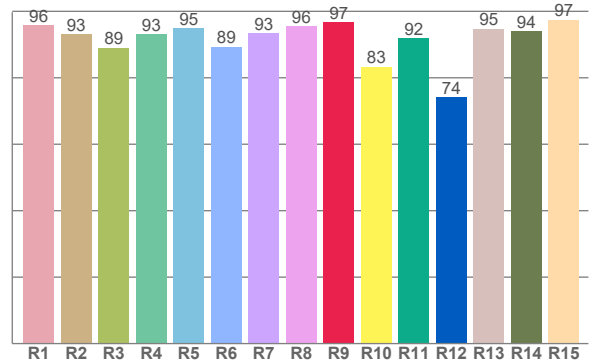
# COLOR DETAILS



**TM30: 92,2**



**CRI: 93,0 (R1-R8)**



CRI R values, only R1-R8 are used to calculate final CRI value

R1	R2	R3	R4	R5	R6	R7	R8	R9	R10	R11	R12	R13	R14	R15
95,8	93,2	89,0	93,1	94,9	89,3	93,4	95,6	96,7	83,4	92,0	74,1	94,7	94,0	97,4

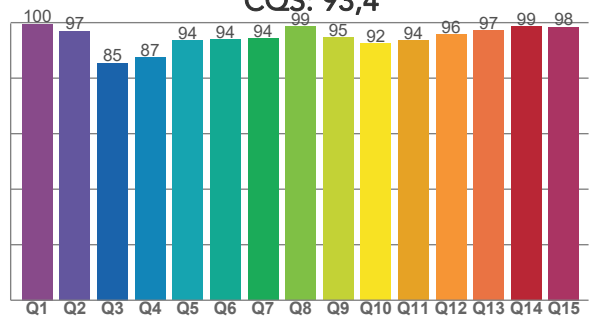
TM30 C values, 16 binned values out of total of 99 C values

C1	C2	C3	C4	C5	C6	C7	C8	C9	C10	C11	C12	C13	C14	C15	C16
95,5	97,0	94,3	92,5	92,0	95,4	96,6	94,8	93,7	88,0	81,3	89,5	91,2	93,6	86,4	93,9

CQS Q values

Q1	Q2	Q3	Q4	Q5	Q6	Q7	Q8	Q9	Q10	Q11	Q12	Q13	Q14	Q15
99,5	96,9	85,4	87,4	93,6	93,9	94,2	98,6	94,6	92,4	93,5	95,6	97,2	98,6	98,4

**CQS: 93,4**



## COLOR PARAMETERS

Color temperature	Color rendering index	Red component	Color fidelity	Color gamut	Color quality scale	Television lighting index	Color coordinate cie 1931	Color coordinate cie 1931	Color deviation from black body
CCT	CRI	CRI R9	TM30 Rf	TM30 Rg	CQS	TLCI	x	y	$\Delta uv$
6664 K	93,0	96,7	92,2	101,8	93,4	98	0,310	0,328	0,0008

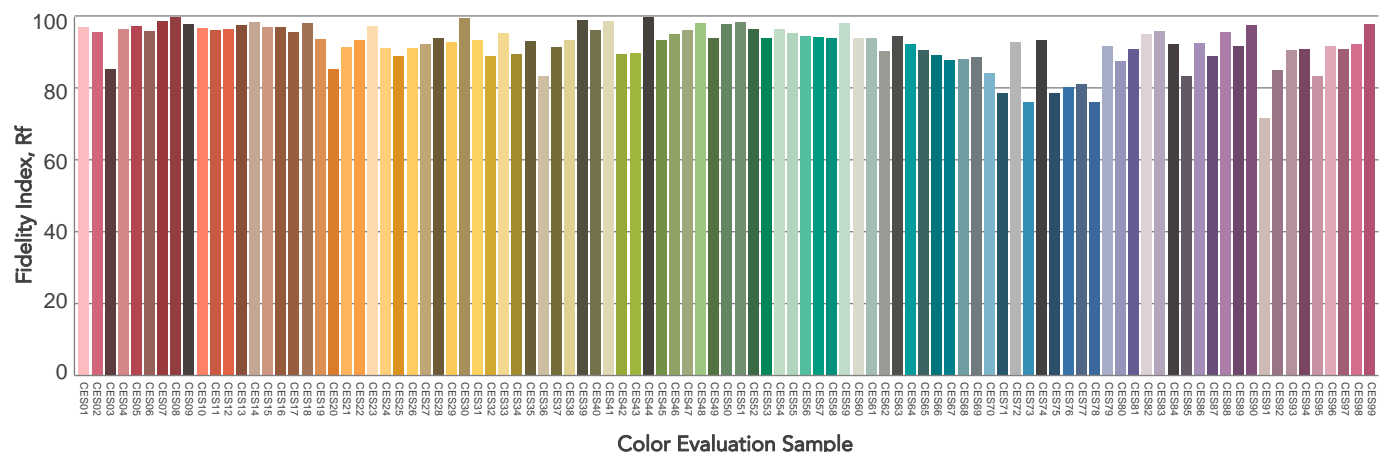
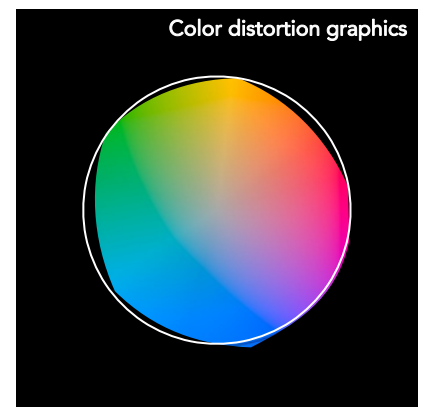
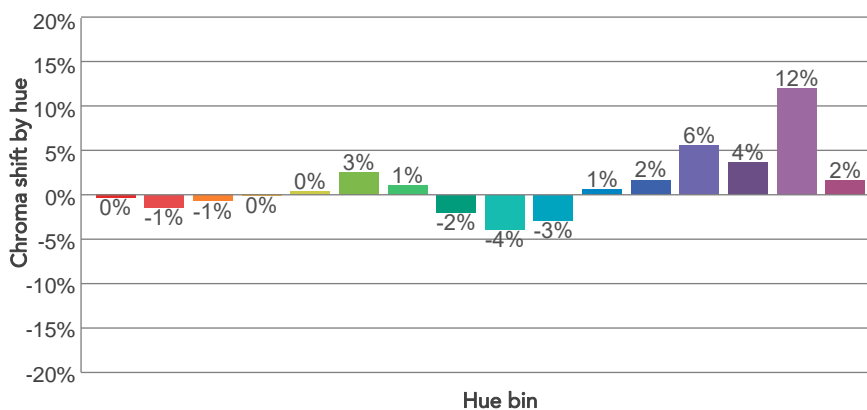
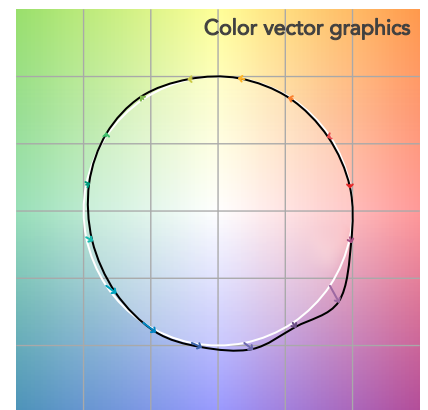
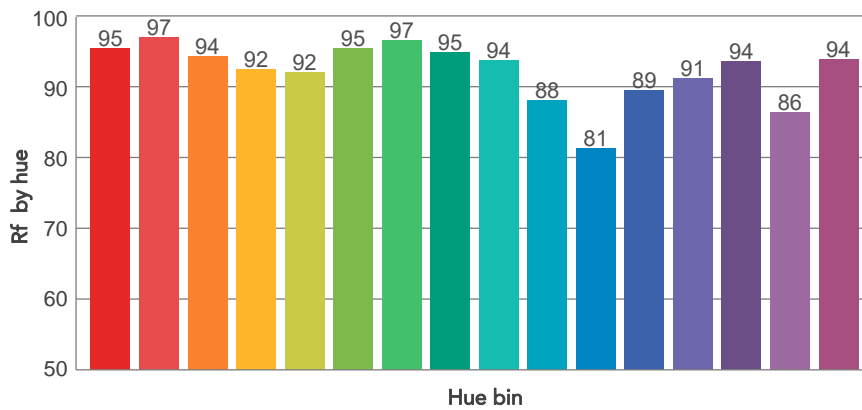
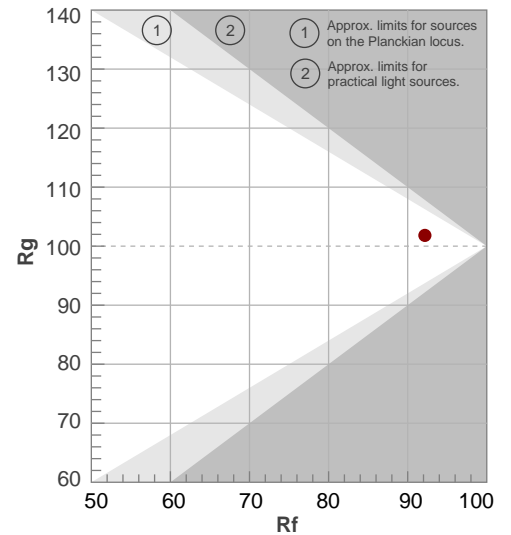


# TM30 DETAILS

**Rf 92,2**  
Fidelity index Rf

**Rg 101,8**  
Gammut index

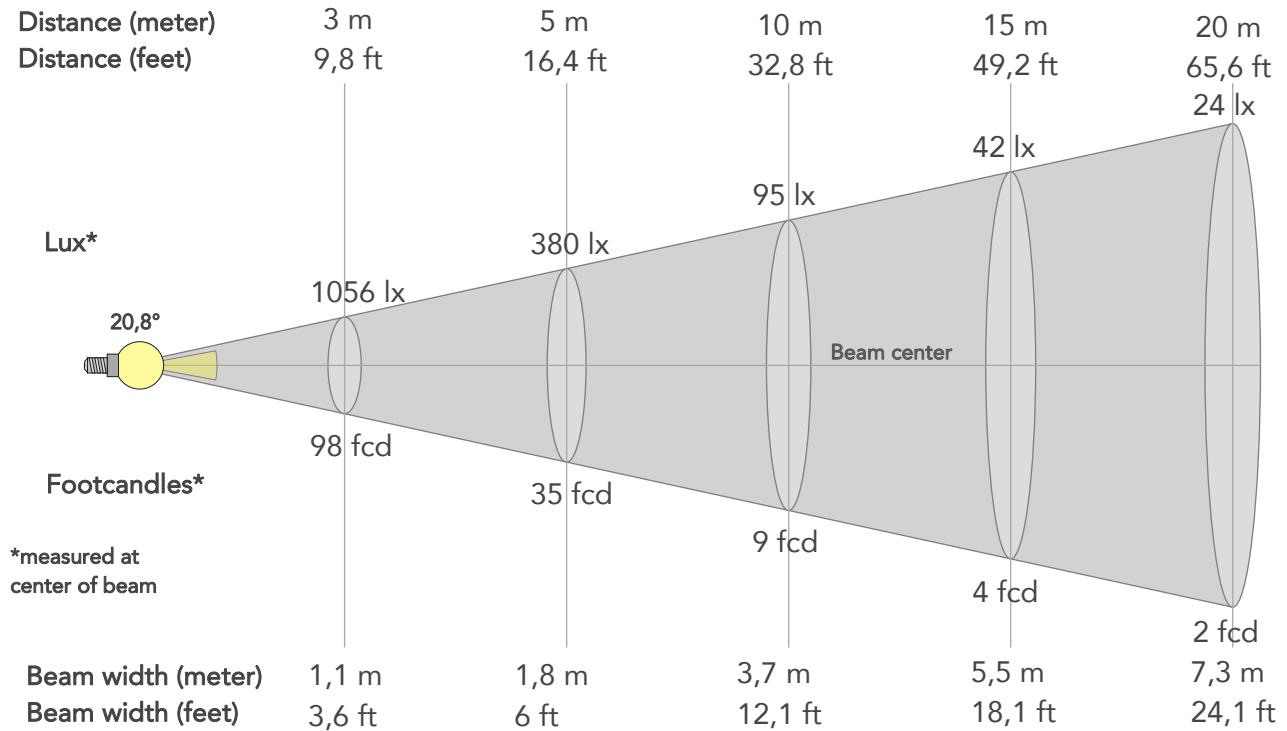
Hue Bin	R <sub>f</sub>	Graphic shifts (%)	
		Chroma	Hue
1	95	0%	-2%
2	97	-1%	0%
3	94	-1%	3%
4	92	0%	4%
5	92	0%	2%
6	95	3%	0%
7	97	1%	-2%
8	95	-2%	-1%
9	94	-4%	3%
10	88	-3%	8%
11	81	1%	11%
12	89	2%	7%
13	91	6%	5%
14	94	4%	0%
15	86	12%	-6%
16	94	2%	-3%



# BEAM DETAILS



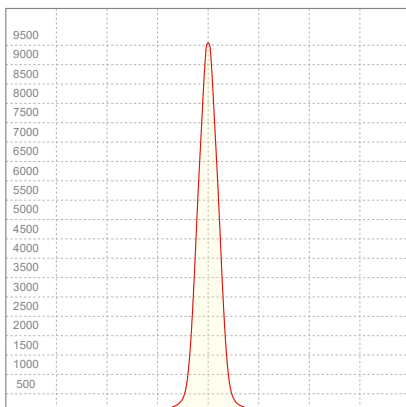
Beam angle 50%	Field angle 10%	Cut off angle 2,5%	Intensity ratio in 120° cone	Intensity ratio in 90° cone
20,8°	36,5°	52,9°	97,2%	93,6%



## BEAM INTENSITIES AND WIDTHS

Distance	1m	2m	3m	4m	5m	7,5m	10m	15m	20m	25m	30m	40m	50m
Distance	3,3ft	6,6ft	9,8ft	13,1ft	16,4ft	24,6ft	32,8ft	49,2ft	65,6ft	82ft	98,4ft	131,2ft	164ft
Lux	9501lx	2375lx	1056lx	594lx	380lx	169lx	95lx	42lx	24lx	15lx	11lx	6lx	4lx
Footcand.	883fcd	221fcd	98fcd	55fcd	35fcd	16fcd	9fcd	4fcd	2fcd	1fcd	1fcd	1fcd	0fcd
Beam wid.	0,4m	0,7m	1,1m	1,5m	1,8m	2,8m	3,7m	5,5m	7,3m	9,2m	11m	14,7m	18,4m
Beam wid.	1,2ft	2,4ft	3,6ft	4,8ft	6ft	9ft	12,1ft	18,1ft	24,1ft	30,1ft	36,2ft	48,2ft	60,3ft

## LINEAR DISTRIBUTION DIAGRAM

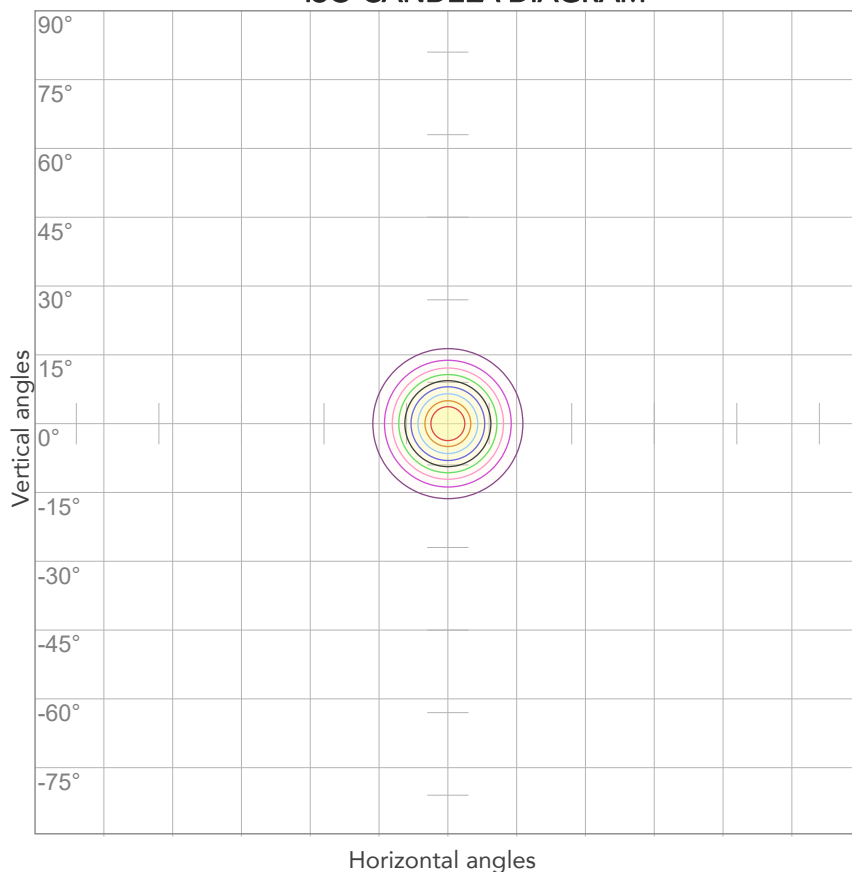


## ELECTRICAL SPECIFICATIONS

Input voltage	Input current	Input power	Power FC	Efficiency
227V	0,126A	26,8W	0,93	60lm/W

# ISO DIAGRAMS

## ISO CANDELA DIAGRAM



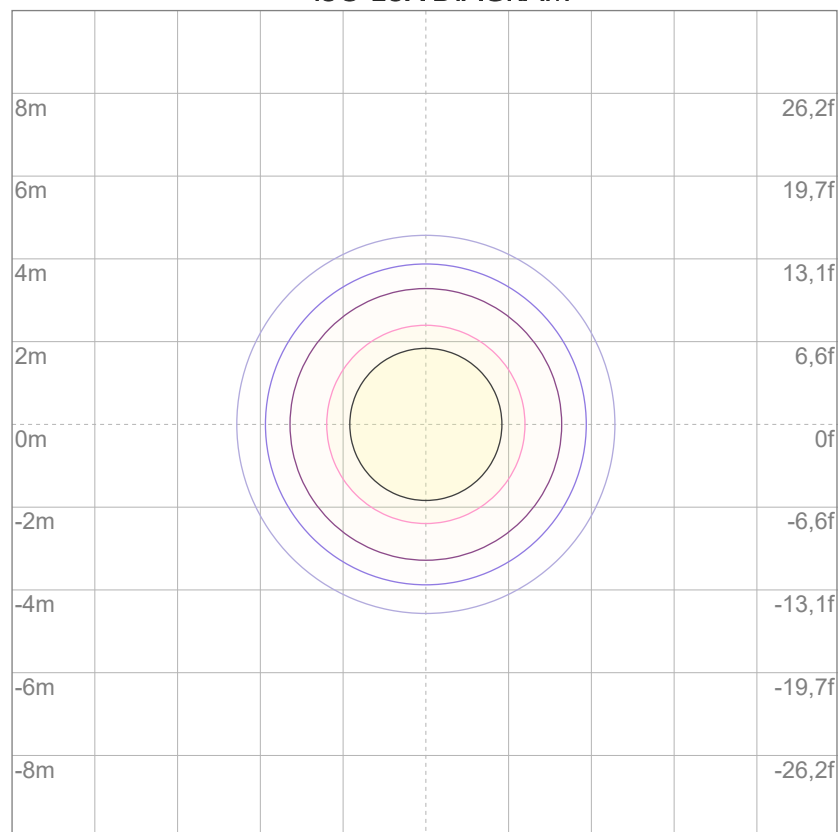
10%	950 cd
20%	1900 cd
30%	2850 cd
40%	3800 cd
50%	4750 cd
60%	5700 cd
70%	6650 cd
80%	7601 cd

### Conditions:

Number of c-planes: 2

Candela at center: 9501 cd

## ISO LUX DIAGRAM



3%	2,85 lx
5%	4,75 lx
10%	9,50 lx
30%	28,5 lx
50%	47,5 lx

### Conditions:

Number of c-planes: 2

Lux at center: 95,0 lx

*Lux distribution on a surface when lamp is mounted at 10 meters from the surface.*