



GUIDELINES FOR INSTALLATION SETUP



EclExpo Flood300FC

300W Full Colour RGB +Warm White
asymmetric LED floodlight

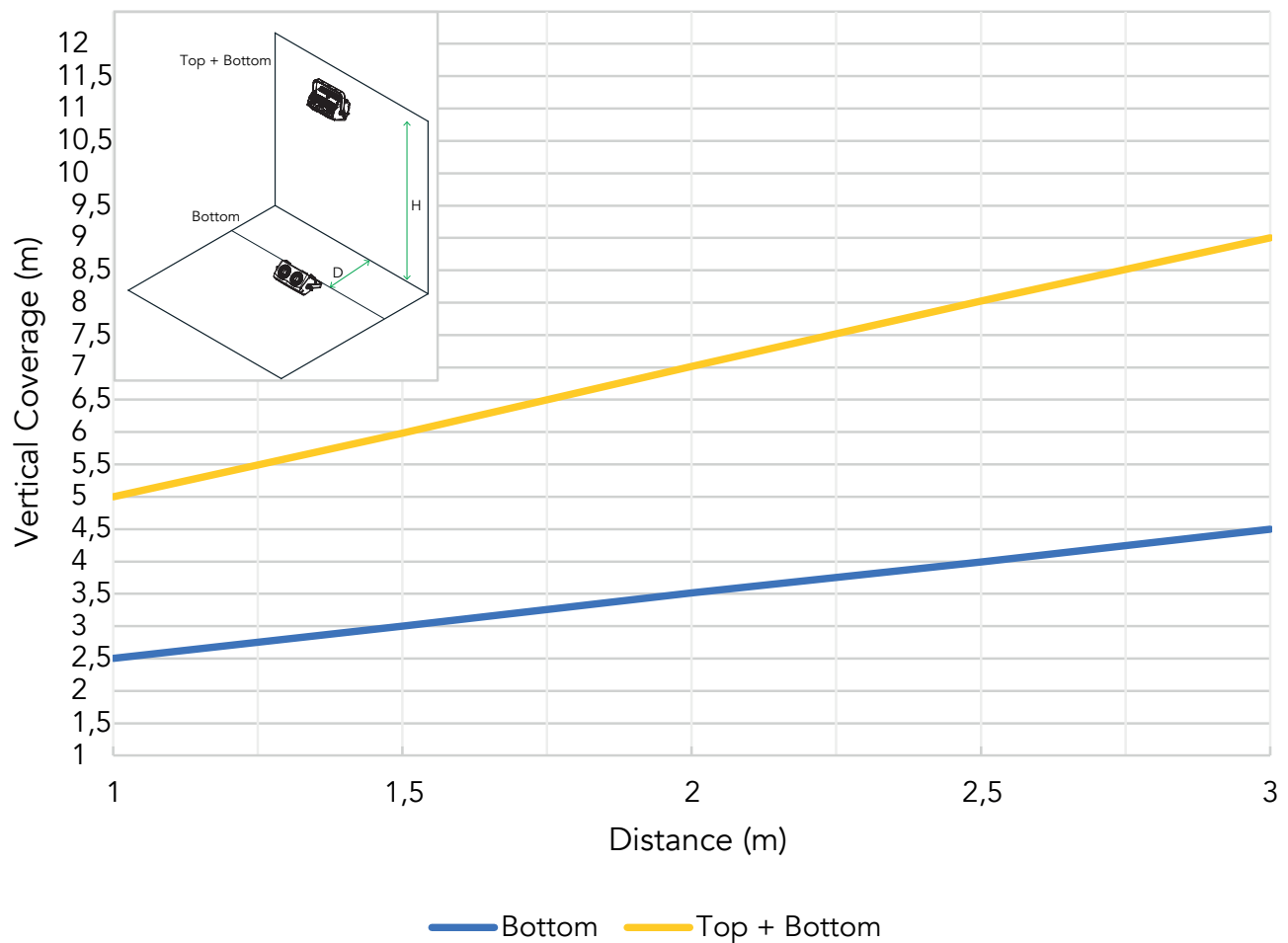
Introduction

The ECLEXPFL300FC is a Full Spectrum high power LED Floodlight, designed for exhibitions and showrooms, as a high-quality LED replacement of traditional tungsten, CDM or HMI asymmetric floods. This asymmetrical fixture being able to be placed both at the front or at the end of the stage. Its soft and wide optics features a beam angle of 100° horizontal \times 60° vertical, making this fixture flexible and effective to illuminate walls, sets and cyclorama uniformly with an even wash with a perfect blending of colours in multiple and flexible configurations. The ECLEXPFL300FC ensures good light distribution from 1 m up to 3 m installation distance from the wall, and it can be installed placing fixtures next each other in a continuous line or with a clearance of up to 3 meter without hard edges or dark gaps, even when illuminating curved canvas.

Installation configurations

ECLEXPFL300FC can be installed at the bottom, top or both top + bottom depending of the desired effect. One of the key aspects of the ECLEXPFL300FC is its flexibility, and this document will show how the fixture will behave at different distance from the wall, and how it performs when combines in top + bottom configuration. The ECLEXPFL300FC has an adjustable bracket on board with which to fix it to adjust the focus tilt of the device. For distances of 1 to 2 m, an adjusted tilt of $+45^{\circ}$ is recommended; for distances over 2.5 m, the tilt should be adjusted to 30° .

Relation between vertical coverage and distance from the cyc wall



Simple rules to take in mind

When ECLEXPFL300FC units are installed in a single row of N units (top or bottom) they illuminate the walls with a uniform horizontal distribution that fades in intensity vertically. When they are installed on two rows of N units each (top+bottom) at the same working distance from the wall, they create a uniform light distribution achieving the best uniformity on the cyclorama wall.

One row setup of "N" ECLEXPFL300FC (top or bottom)

- VC (Vertical Coverage) = $D \times 2,5$ m

Two rows setup of "N" ECLEXPFL300FC (top+bottom)

- VC (Vertical Coverage) = $D \times 5$ m

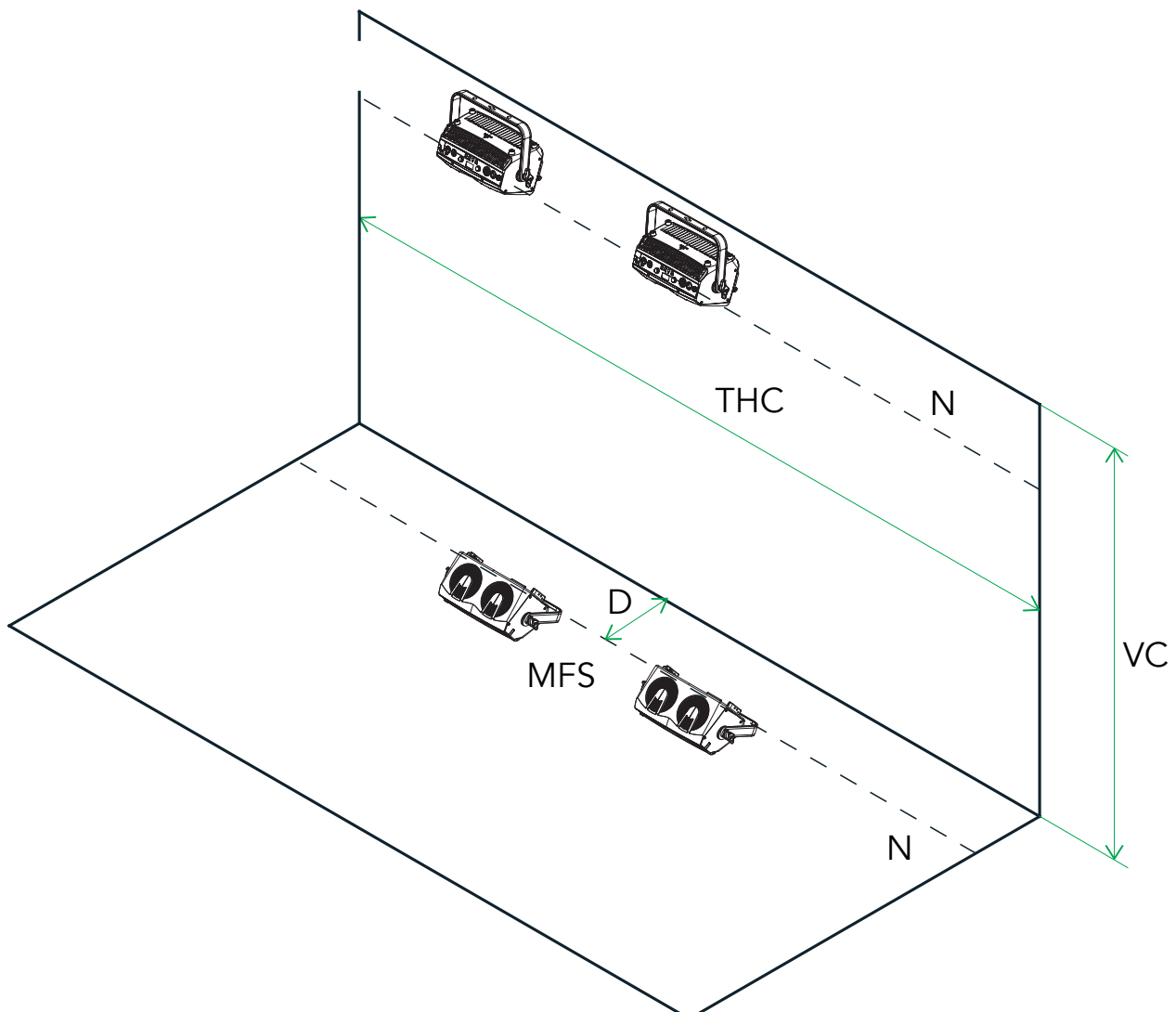
Distance (D) to Wall = 1 - 3 m

Tilt adjustment for distances **from 1 to 2 m**: $+45^\circ$
for distances **more than 2,5 m**: $+30^\circ$

Maximum Fixture Spacing (MFS) = 2,5 m

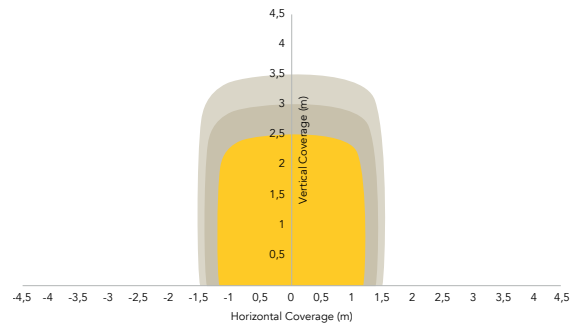
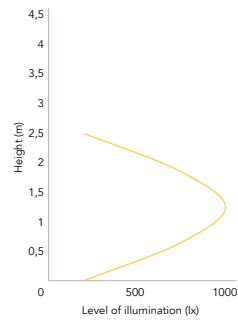
Horizontal Coverage (HC) of 1 unit = 5 m

Total Horizontal Coverage (THC) of N units with acceptable uniformity = $N \times 2,5$ m

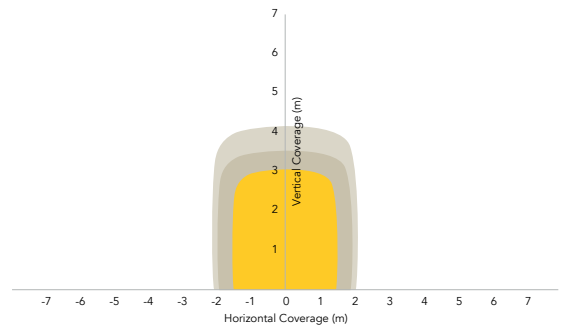
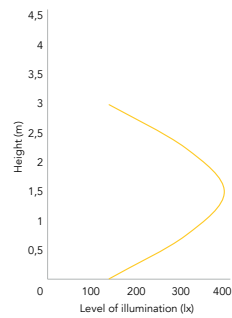


ECLEXP0FL300FC performance with difference installation configurations (top or bottom)

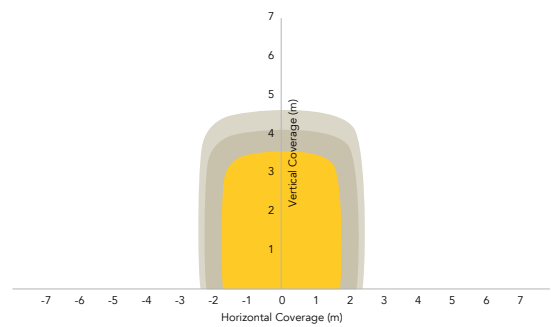
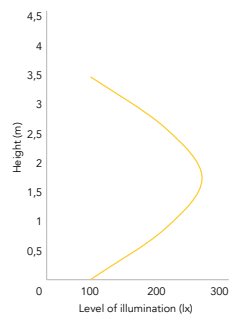
DISTANCE = 1 m tilt = 45°



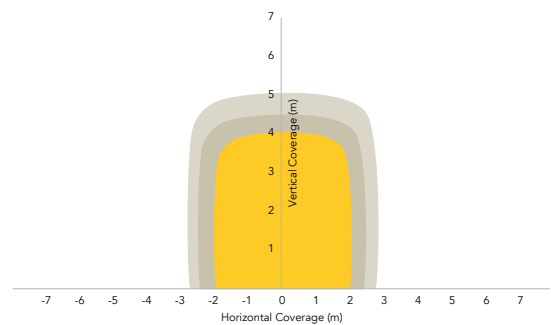
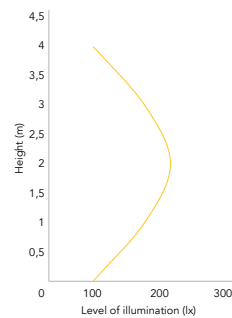
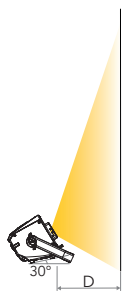
DISTANCE = 1,5 m tilt = 45°



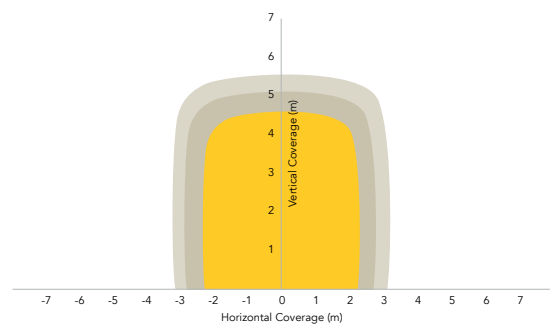
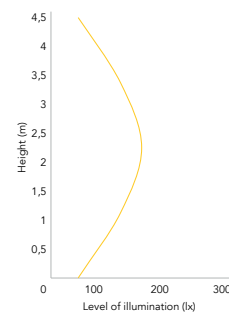
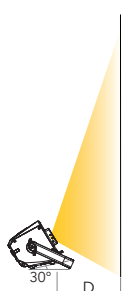
DISTANCE = 2 m tilt = 45°



DISTANCE = 2,5 m tilt = 30°

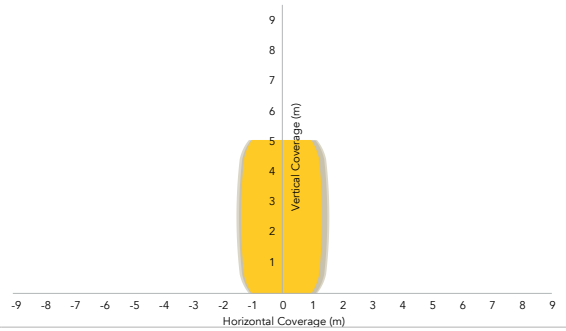
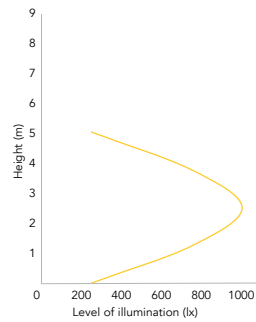


DISTANCE = 3 m tilt = 30°

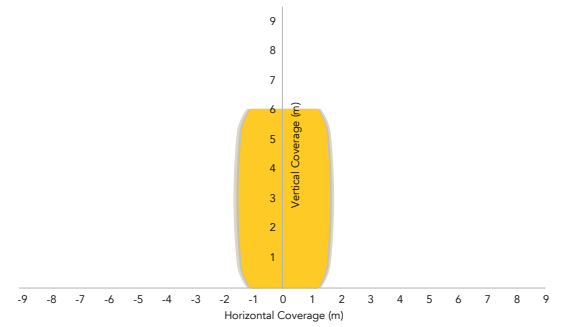
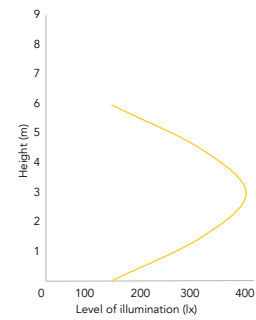


ECLEXP0FL300FC performance with difference installation configurations (top or bottom)

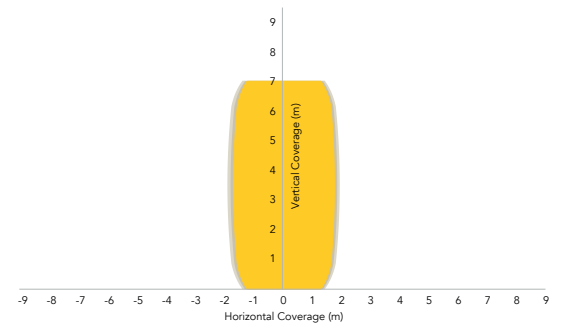
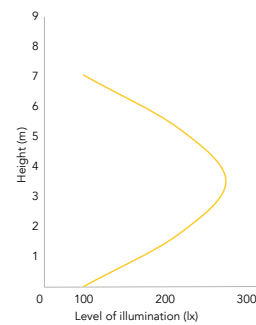
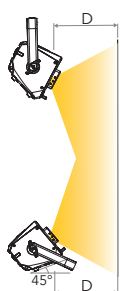
DISTANCE = 1 m tilt = 45°



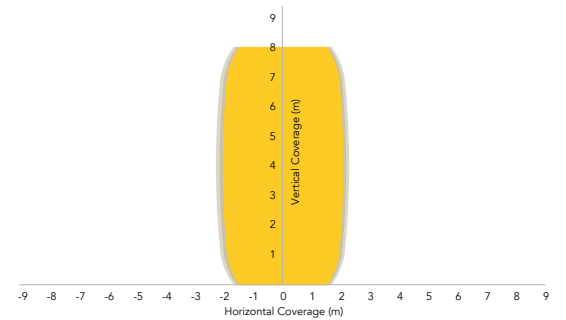
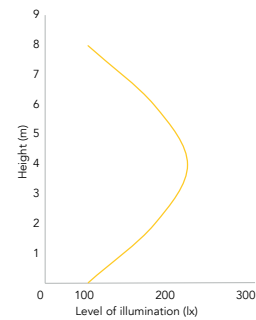
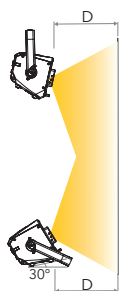
DISTANCE = 1,5 m tilt = 45°



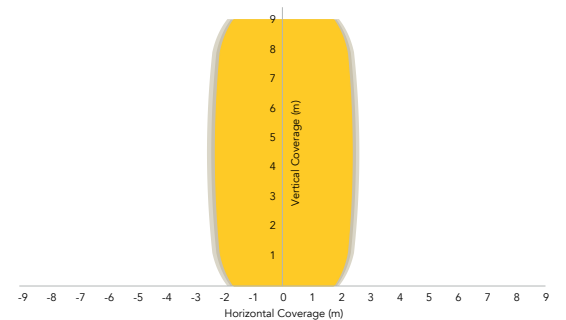
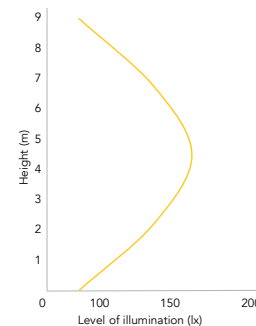
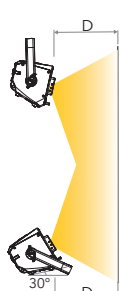
DISTANCE = 2 m tilt = 45°



DISTANCE = 2,5 m tilt = 30°

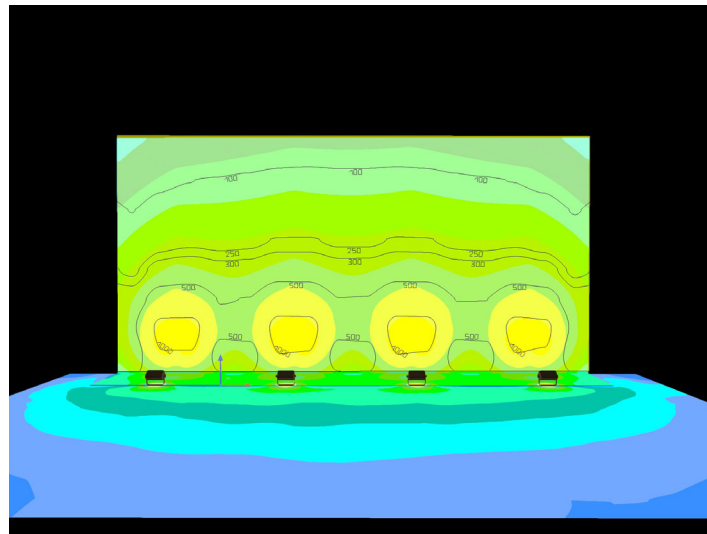


DISTANCE = 3 m tilt = 30°

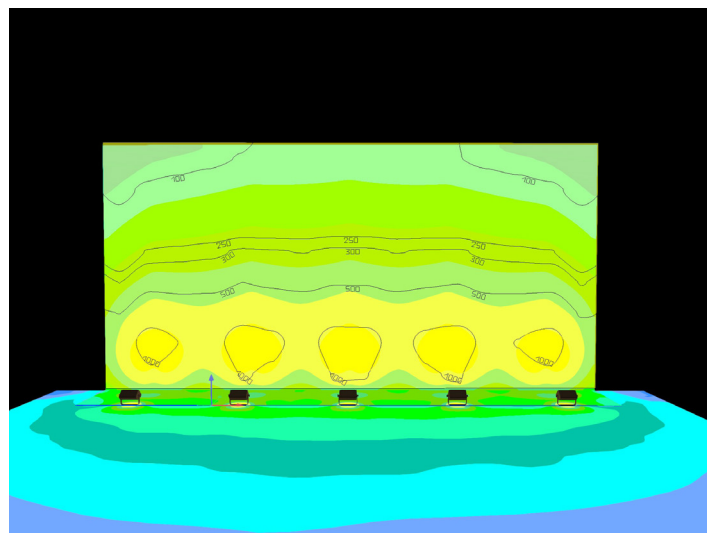


Case study 1: wall 10 m x 5 m D = 1 m

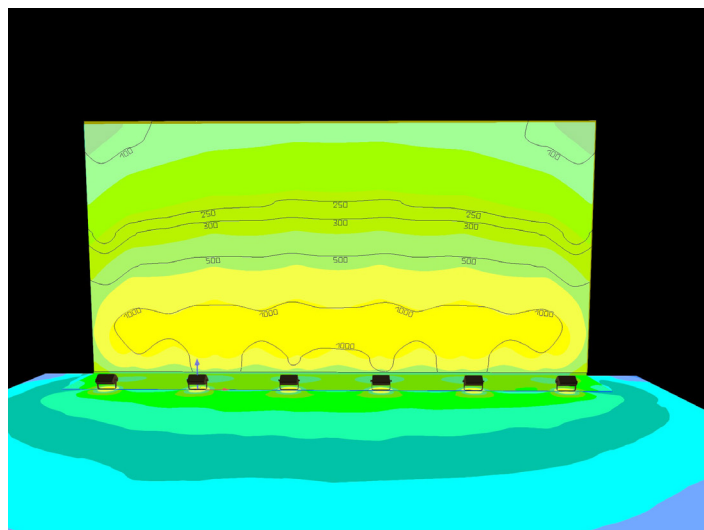
Minimum configuration: 4 pcs ECLEXP0FL300FC placed at the bottom with fixture spacing (FS) 2,5 m



Medium configuration: 5 pcs ECLEXP0FL300FC placed at the bottom with fixture spacing (FS) 2 m

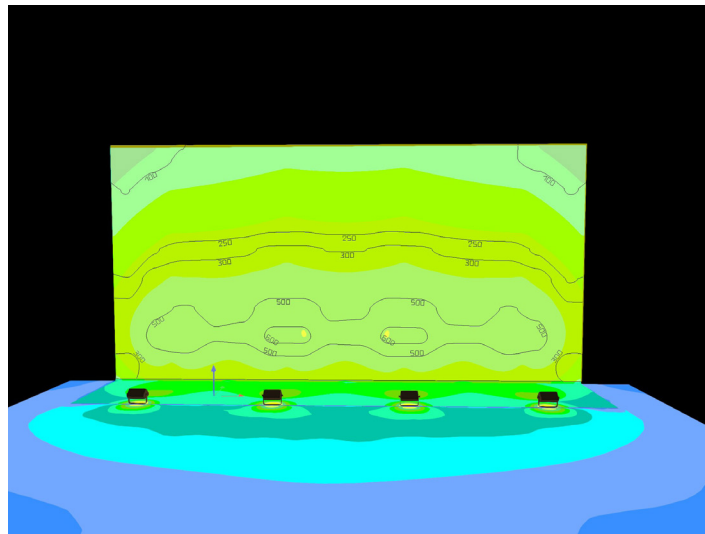


Best configuration: 6 pcs ECLEXP0FL300FC placed at the bottom with fixture spacing (FS) 1,5 m

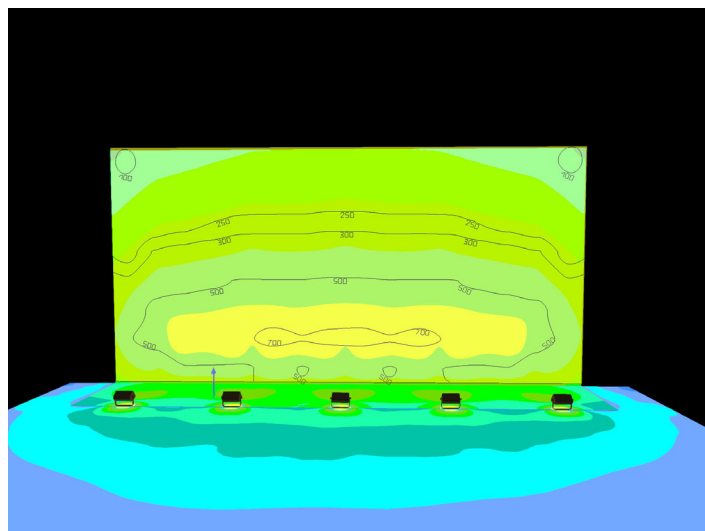


Case study 1: wall 10 m x 5 m D = 1,5 m

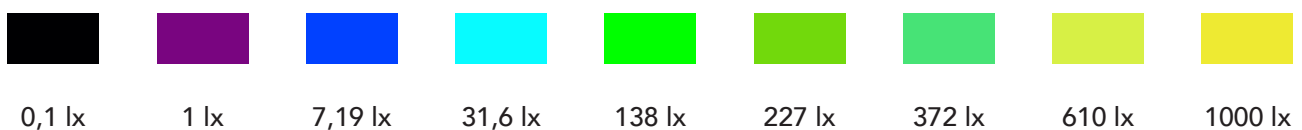
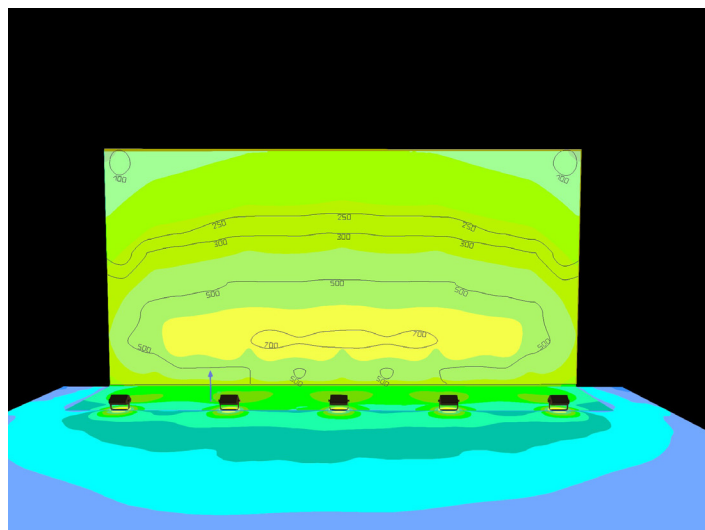
Minimum configuration: 4 pcs ECLEXPOFL300FC placed at the bottom with fixture spacing (FS) 2,5 m



Medium configuration: 5 pcs ECLEXPOFL300FC placed at the bottom with fixture spacing (FS) 2 m

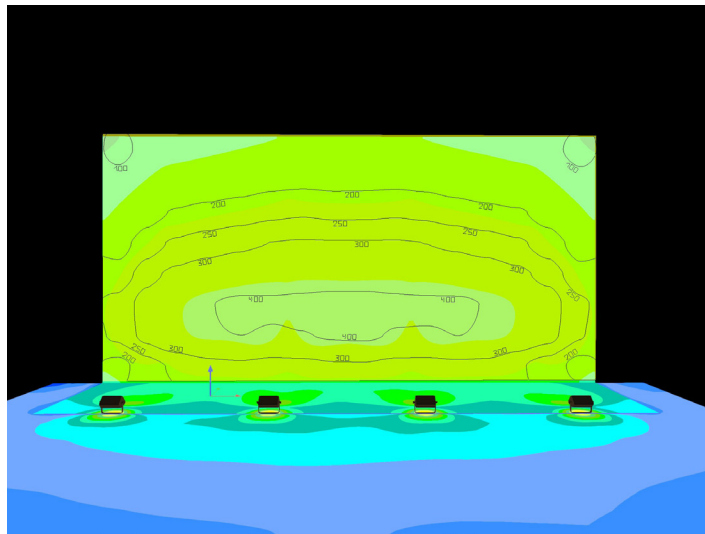


Best configuration: 6 pcs ECLEXPOFL300FC placed at the bottom with fixture spacing (FS) 1,5 m

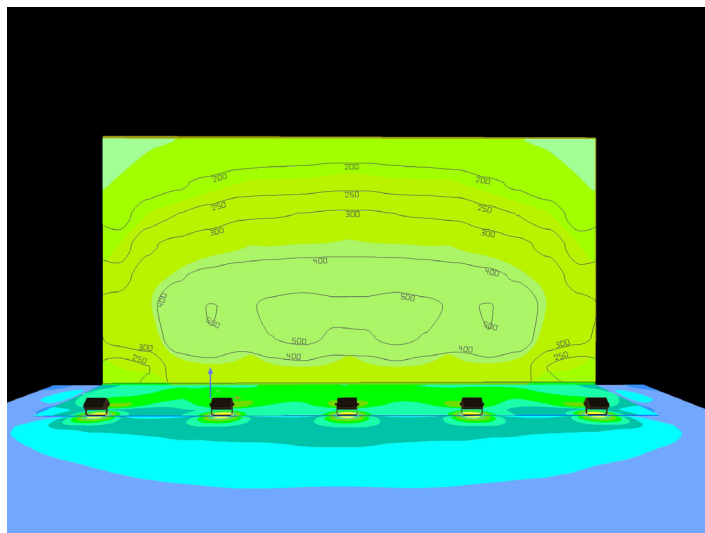


Case study 1: wall 10 m x 5 m D = 2 m

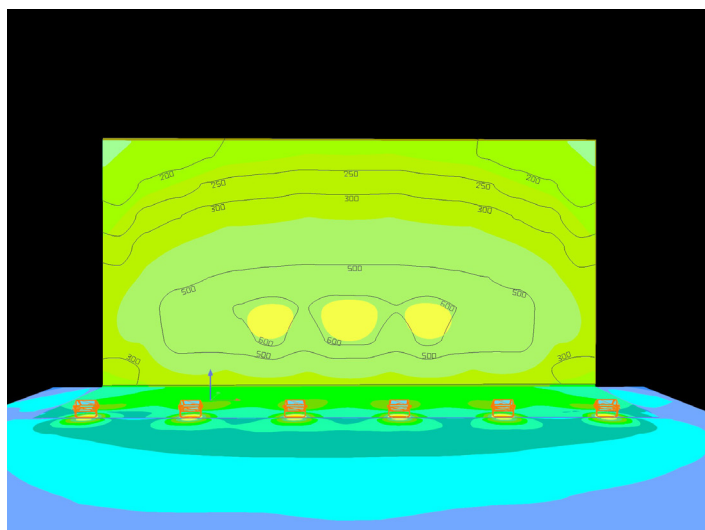
Minimum configuration: 4 pcs ECLEXPOFL300FC placed at the bottom with fixture spacing (FS) 2,5 m



Medium configuration: 5 pcs ECLEXPOFL300FC placed at the bottom with fixture spacing (FS) 2 m

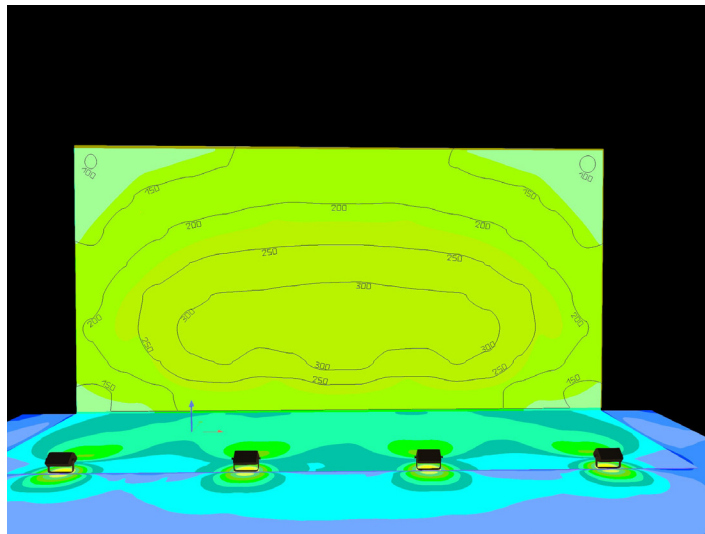


Best configuration: 6 pcs ECLEXPOFL300FC placed at the bottom with fixture spacing (FS) 1,5 m

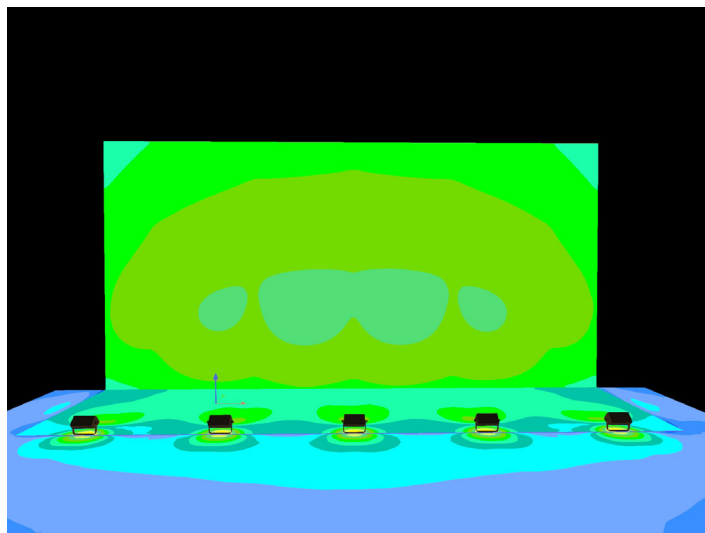


Case study 1: wall 10 m x 5 m D = 2,5 m

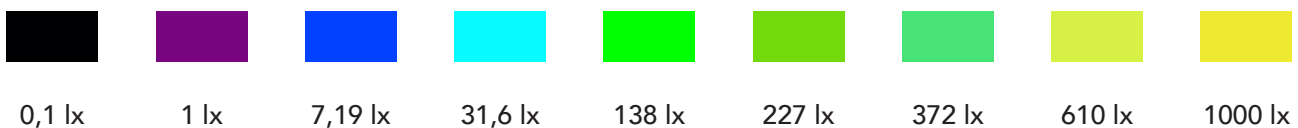
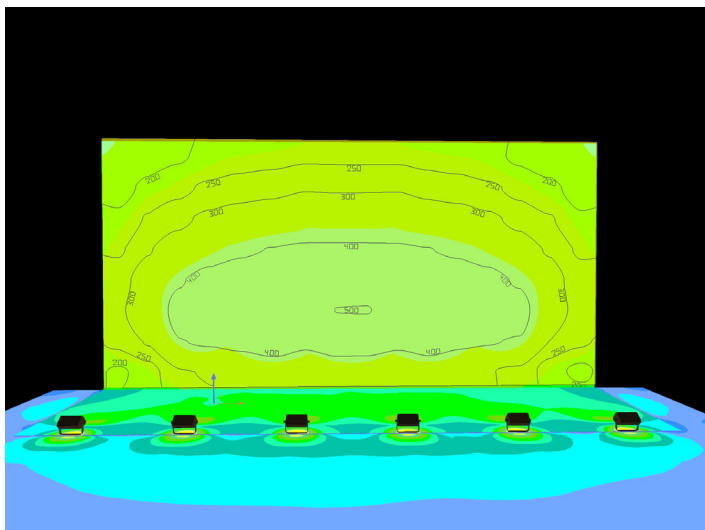
Minimum configuration: 4 pcs ECLEXPOFL300FC placed at the bottom with fixture spacing (FS) 2,5 m



Medium configuration: 5 pcs ECLEXPOFL300FC placed at the bottom with fixture spacing (FS) 2 m

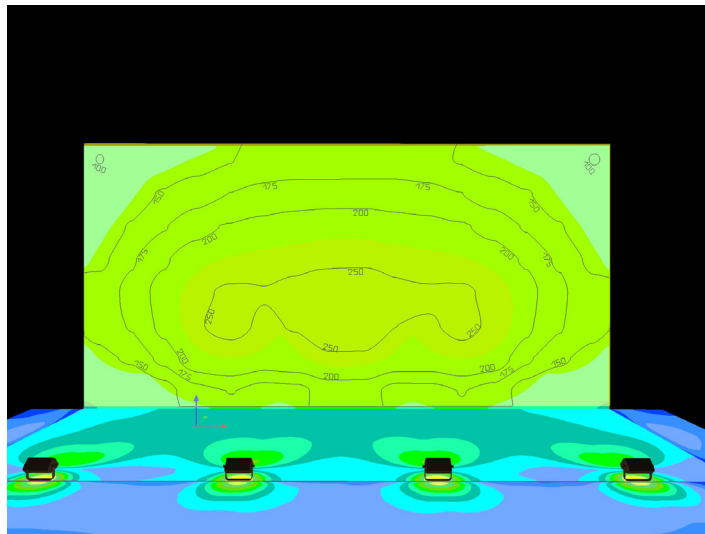


Best configuration: 6 pcs ECLEXPOFL300FC placed at the bottom with fixture spacing (FS) 1,5 m

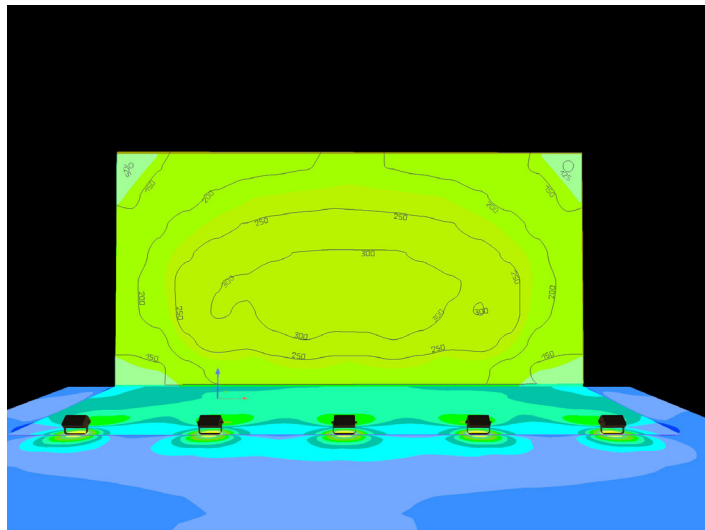


Case study 1: wall 10 m x 5 m D = 3 m

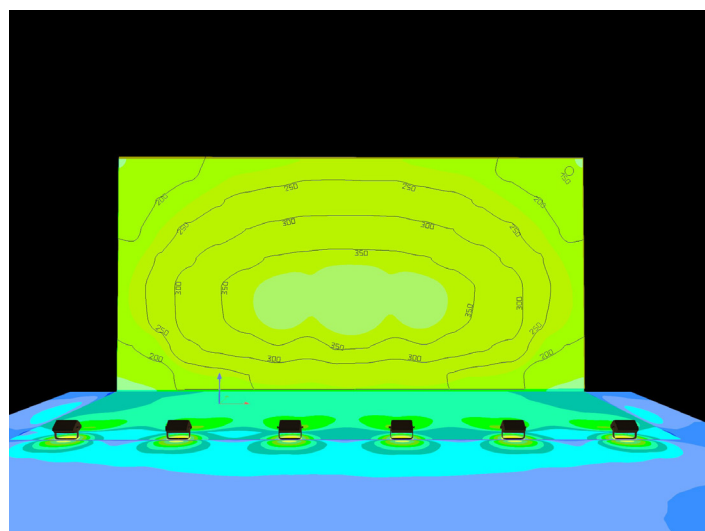
Minimum configuration: 4 pcs ECLEXPOFL300FC placed at the bottom with fixture spacing (FS) 2,5 m



Medium configuration: 5 pcs ECLEXPOFL300FC placed at the bottom with fixture spacing (FS) 2 m

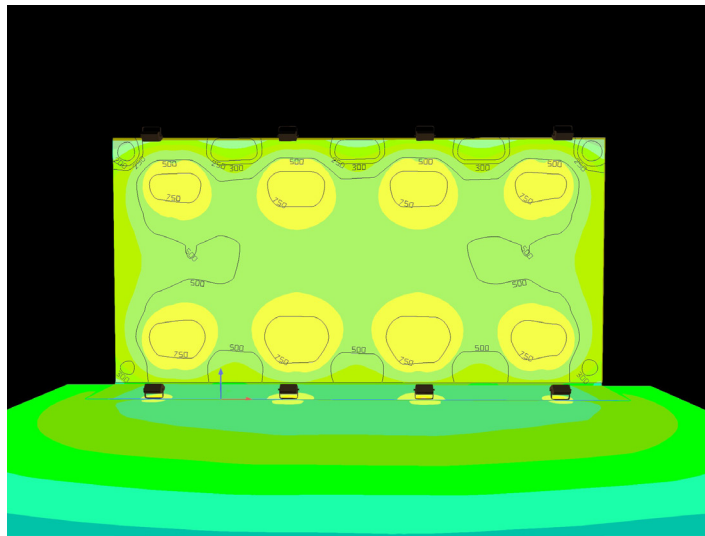


Best configuration: 6 pcs ECLEXPOFL300FC placed at the bottom with fixture spacing (FS) 1,5 m

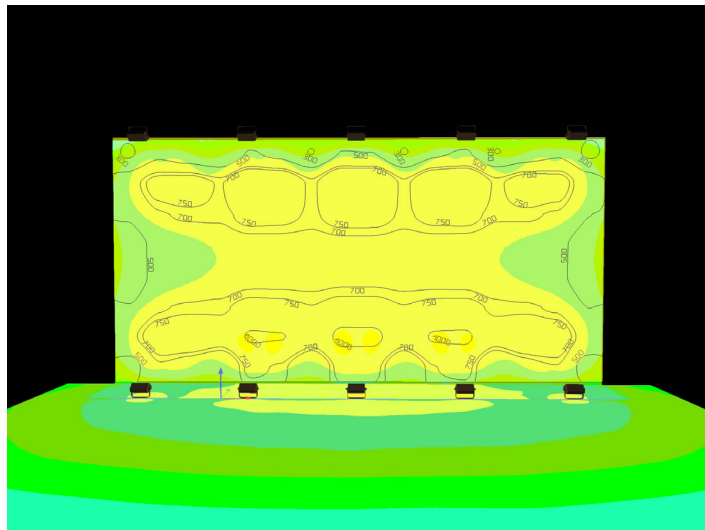


Case study 2: wall 10 m x 5 m $D = 1\text{ m}$

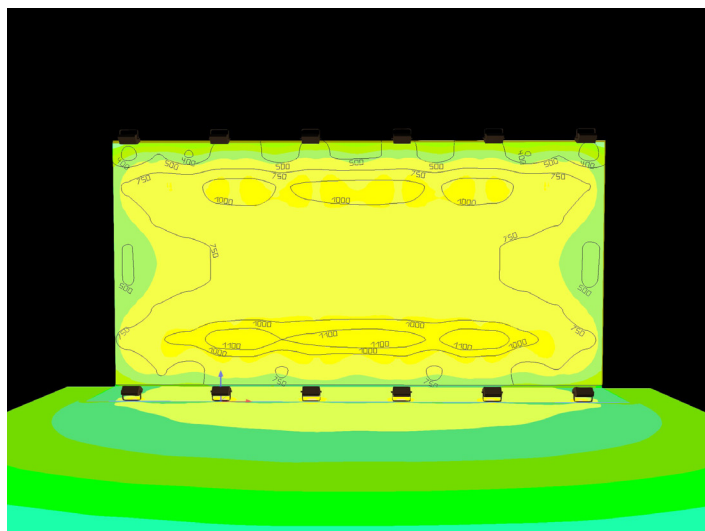
Minimum configuration: 8 pcs ECLEXP0FL300FC (placed 4 top + 4 bottom) with fixture spacing (FS) 2,5 m



Medium configuration: 10 pcs ECLEXP0FL300FC (placed 5 top + 5 bottom) with fixture spacing (FS) 2 m

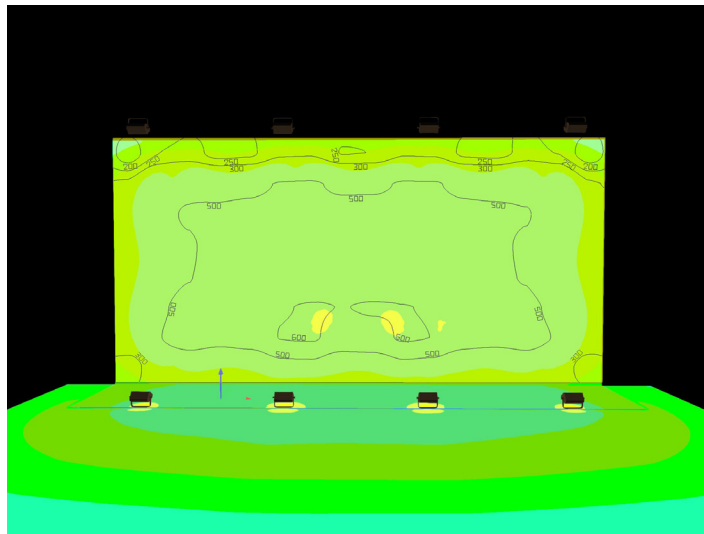


Best configuration: 12 pcs ECLEXP0FL300FC (placed 6 top + 6 bottom) with fixture spacing (FS) 1,5 m

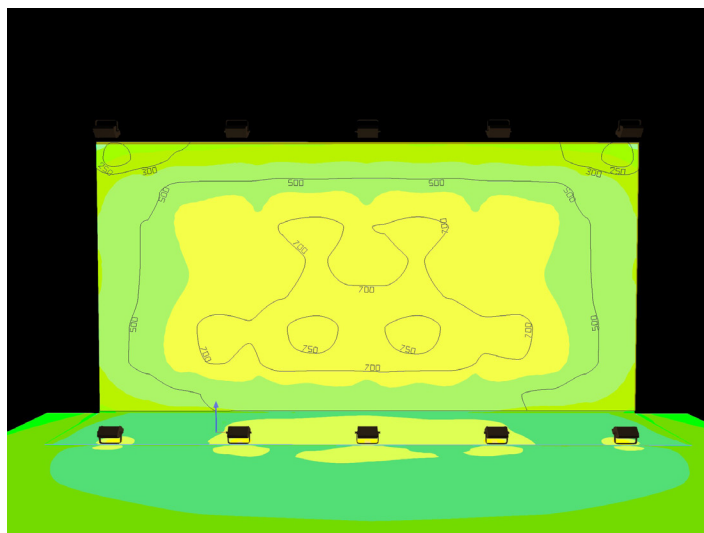


Case study 2: wall 10 m x 5 m D = 1,5 m

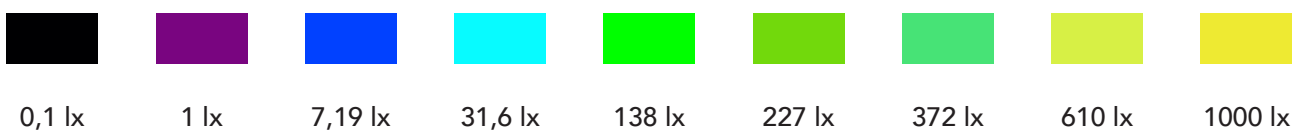
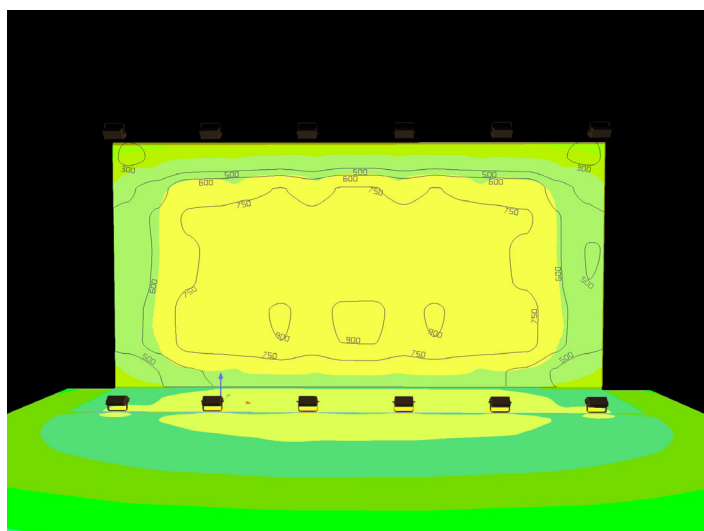
Minimum configuration: 8 pcs ECLEXPOFL300FC (placed 4 top + 4 bottom) with fixture spacing (FS) 2,5 m



Medium configuration: 10 pcs ECLEXPOFL300FC (placed 5 top + 5 bottom) with fixture spacing (FS) 2 m

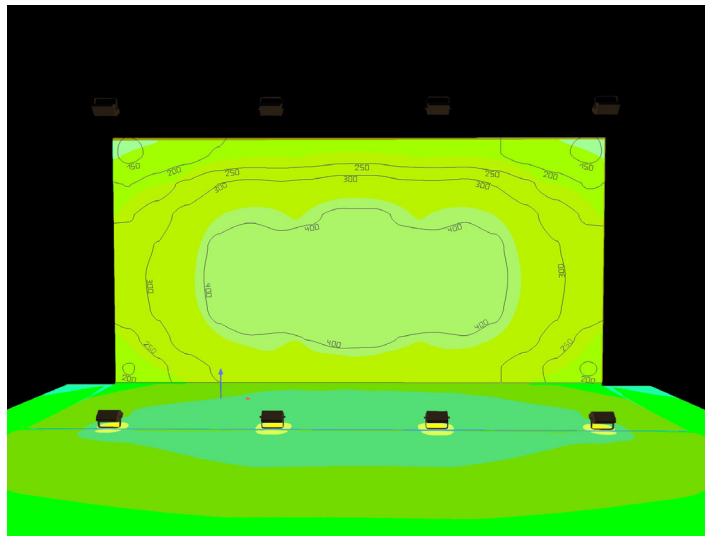


Best configuration: 12 pcs ECLEXPOFL300FC (placed 6 top + 6 bottom) with fixture spacing (FS) 1,5 m

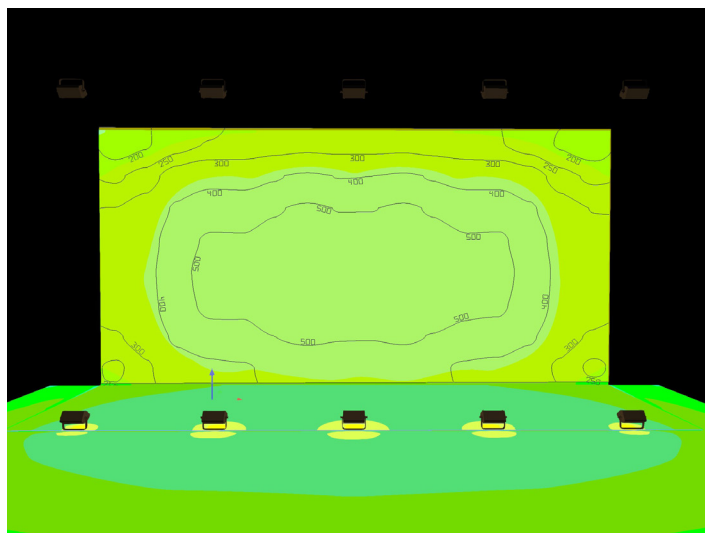


Case study 2: wall 10 m x 5 m D = 2,5 m

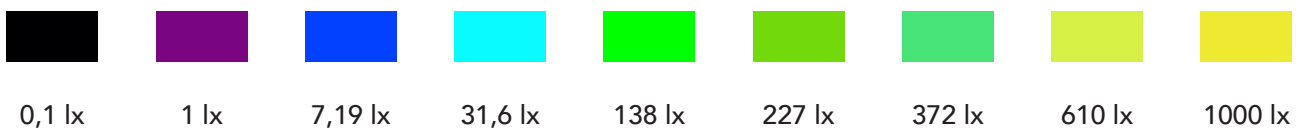
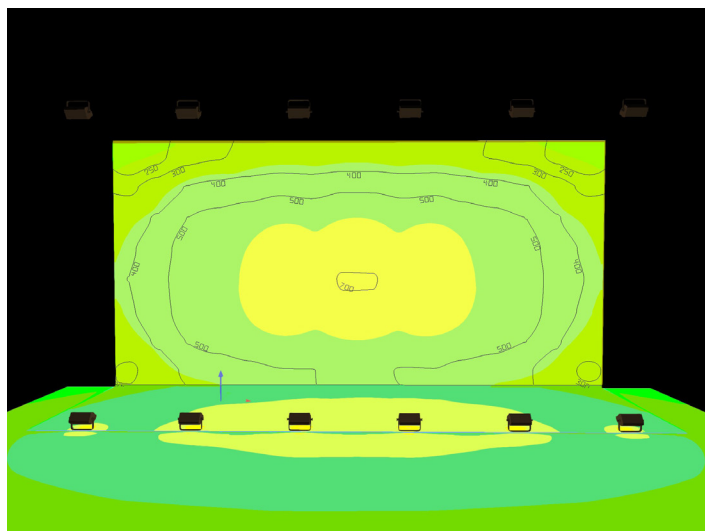
Minimum configuration: 8 pcs ECLEXPOFL300FC (placed 4 top + 4 bottom) with fixture spacing (FS) 2,5 m



Medium configuration: 10 pcs ECLEXPOFL300FC (placed 5 top + 5 bottom) with fixture spacing (FS) 2 m

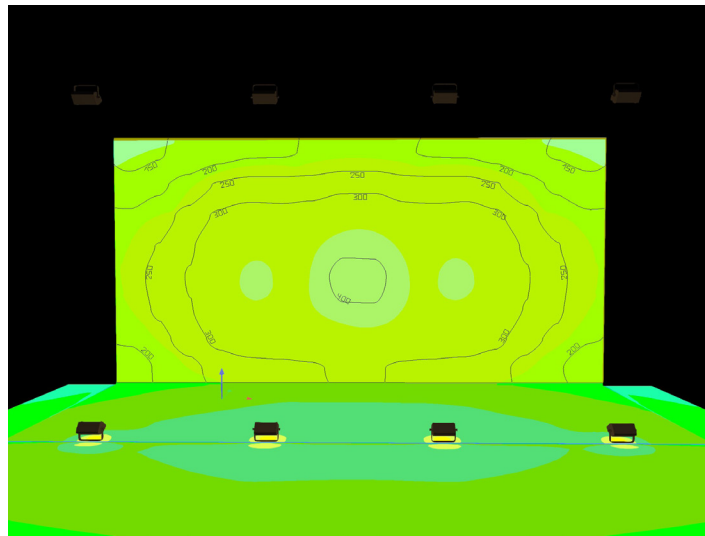


Best configuration: 12 pcs ECLEXPOFL300FC (placed 6 top + 6 bottom) with fixture spacing (FS) 1,5 m

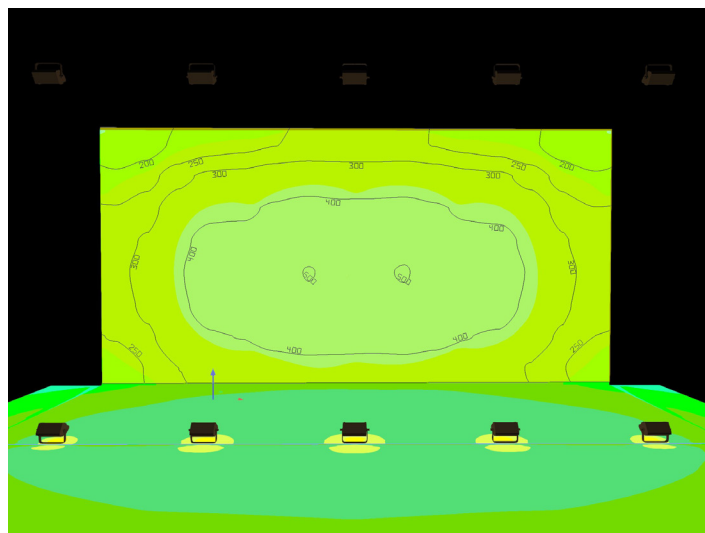


Case study 2: wall 10 m x 5 m D = 3 m

Minimum configuration: 8 pcs ECLEXPOFL300FC (placed 4 top + 4 bottom) with fixture spacing (FS) 2,5 m



Medium configuration: 10 pcs ECLEXPOFL300FC (placed 5 top + 5 bottom) with fixture spacing (FS) 2 m



Best configuration: 12 pcs ECLEXPOFL300FC (placed 6 top + 6 bottom) with fixture spacing (FS) 1,5 m

