



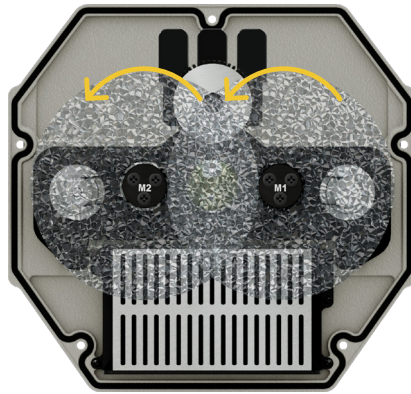
PROLiGHTS

Mosaico FX100 series
Animation Effects
Guidelines

Water Effect

Set both discs moving in the same direction if the water is meant to flow. For a smoother flow use the same speed for the two discs. Softening the focus will make the image appear more like a reflection.

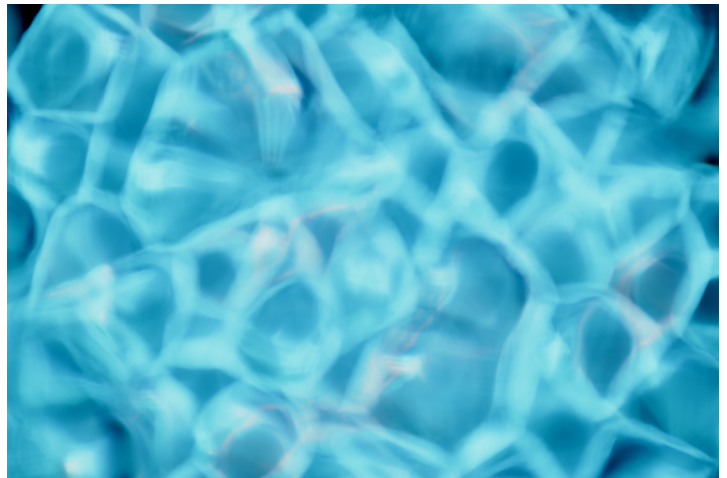
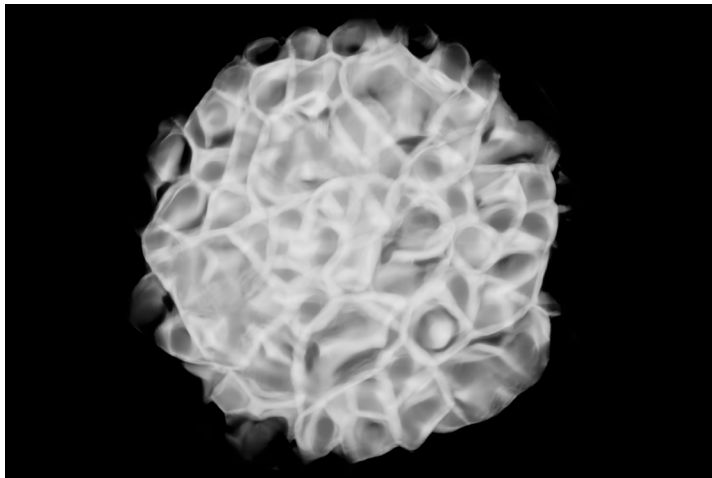
Suggested optics:
MFX100LWGN, MFX100LWGVW,
MFX100LWTM, MFX100LWTW



Standard Glass Effect (x2 included)



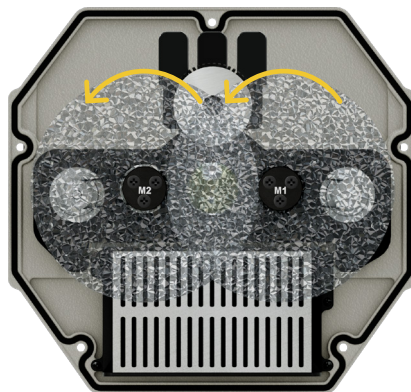
Standard Glass Effect (x2 included)
GBVFX100120F06 (accessories)



Red Fire

Set both discs moving in the same direction, with one disc moving slightly faster. Adjust the focus until the edges of the individual flames are distinct. The more angular patterns will create a more active jumping flame than the smoother patterns.

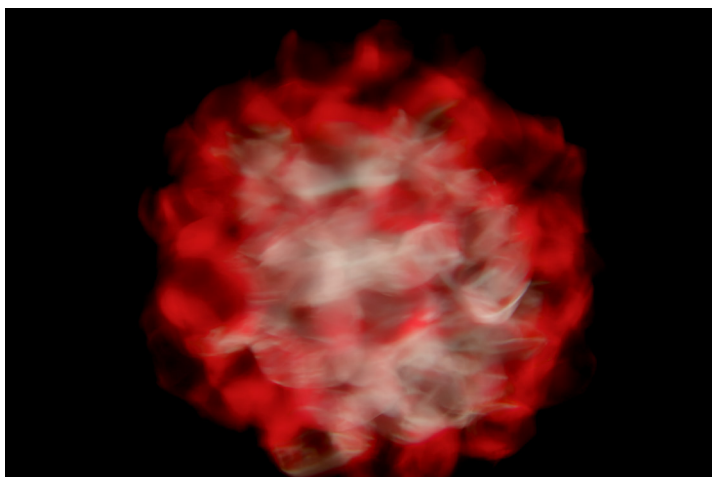
Suggested optics:
MFX100LWGN, MFX100LWGVW,
MFX100LWTM, MFX100LWTW



Standard Glass Effect (x2 included)



Standard Glass Effect (x2 included)
GBVFX100220F03 (accessories)



Smoke Effect

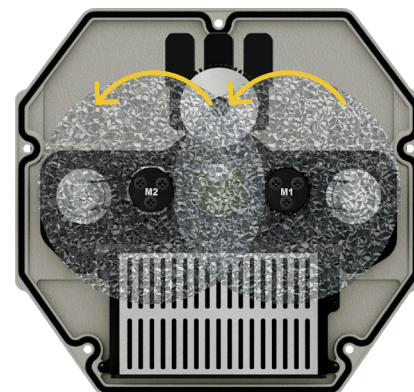
Unleash your creativity and unlock endless possibilities by fine-tuning the Smoke effect through regulating the intensity of the animation wheel speed rotation or exchanging the glass gobos design choosing from plenty colors and textures.

Suggested optics:

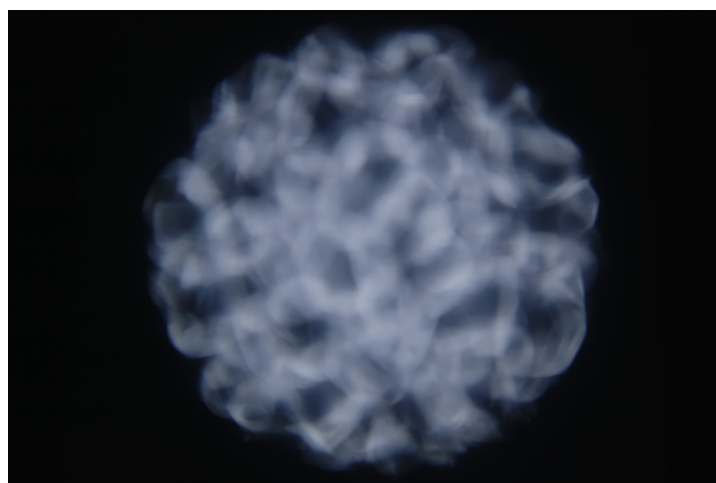
MFX100LWGN, MFX100LWGVW, MFX100LWTM, MFX100LWTW



Standard Glass Effect (x2 included)



Standard Glass Effect (x2 included)

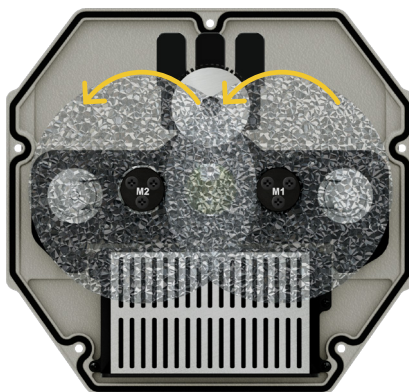


Aurora Borealis

The effect can be further tweaked by adjusting the rotation speed of the animation wheels or replacing the glass gobo with other designs having different shades of colours or textures. Let your imagination run wild with unique designs for architectural lighting and cinematic scenes.

Suggested optics:

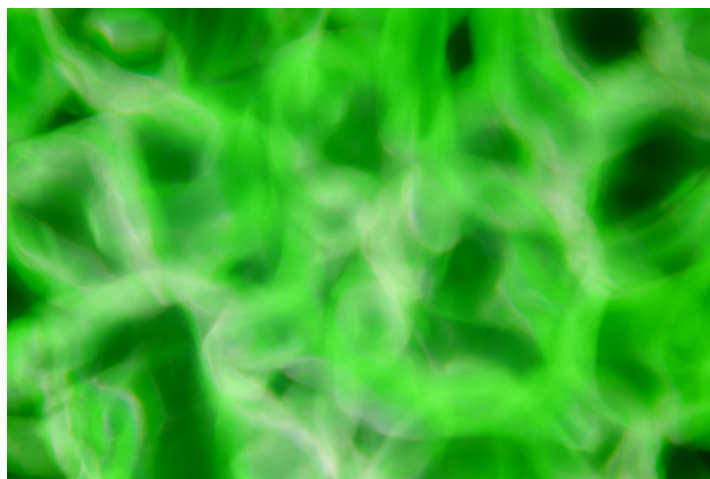
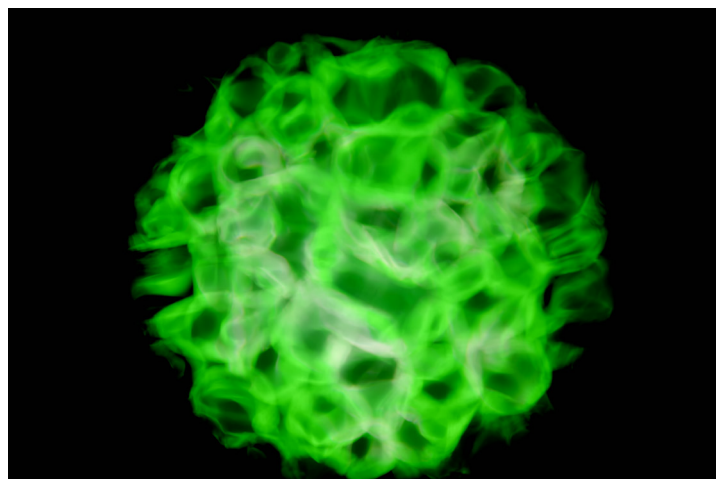
MFX100LWGN, MFX100LWGVW, MFX100LWTM, MFX100LWTW



Standard Glass Effect (x2 included)



Standard Glass Effect (x2 included)
GBVFX100120F04 (accessories)



Amber Fire

Discover the full potential of the Amber Fire effect by modulating the rotation speed of animation wheels or embracing different glass gobos designs each having a wide combination of colors and textures.

Suggested optics:

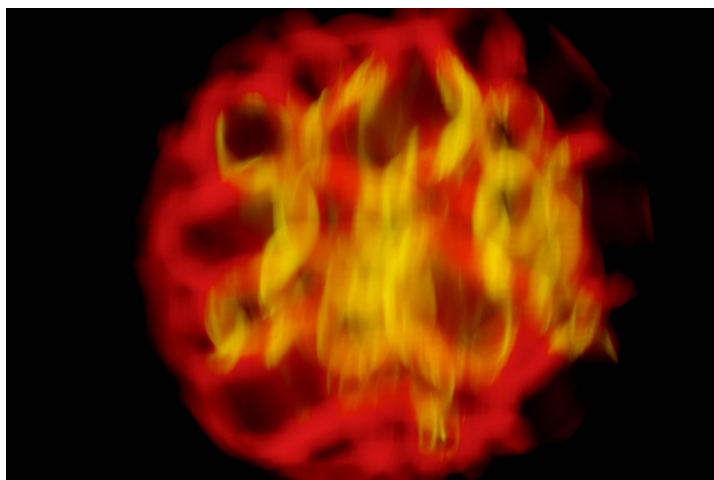
MFX100LWGN, MFX100LWGVW,
MFX100LWTM, MFX100LWTW



Standard Glass Effect (included)
MFX100D35CYELLOW (accessories)



Standard Glass Effect (included)
GBVFX100120F03 (accessories)

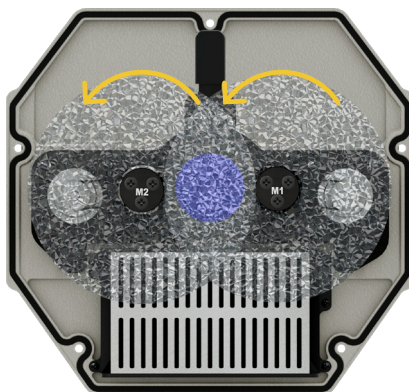


Plasma Effect

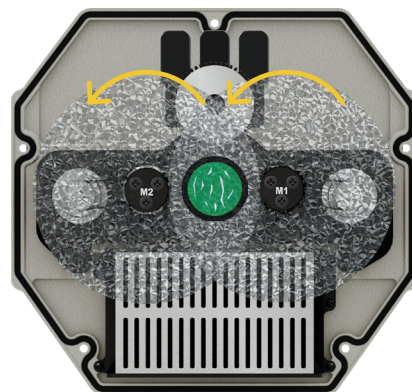
The effect can be further tweaked by adjusting the rotation speed of the animation wheels or replacing the glass gobo with other designs having different shades of colours or textures. Let your imagination run wild with unique designs for architectural lighting and cinematic scenes.

Suggested optics:

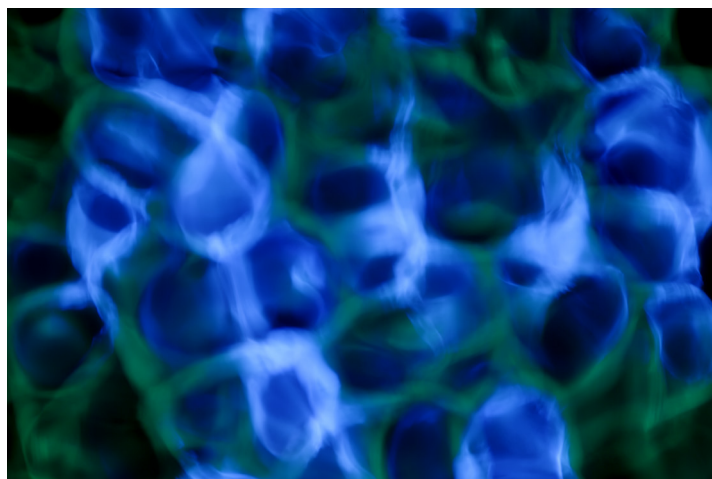
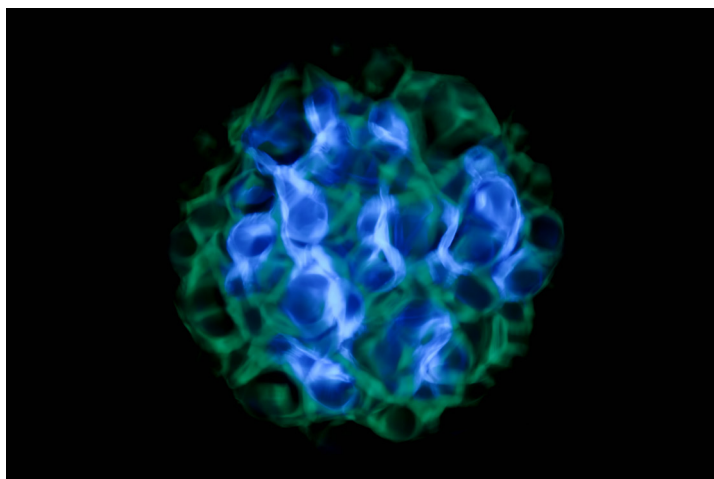
MFX100LWGN, MFX100LWGVW,
MFX100LWTM, MFX100LWTW



Standard Glass Effect (x2 included)
MFX100D35CBBLUE (accessories)



Animation Water Effect (x2 included)
GBVFX100120F04 (accessories)

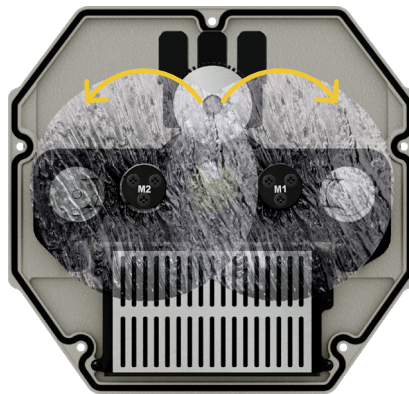


Falling Water

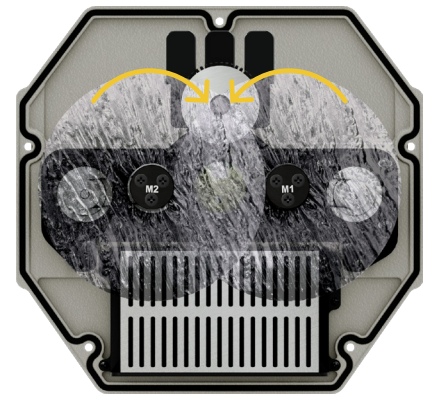
For a standing ripple, set the discs to move in opposite directions, again adjusting the speed of each disc to get the amount of turbulence desired. Adjusting the focus to a sharp image will give the impression of looking into moving water.

Suggested optics:

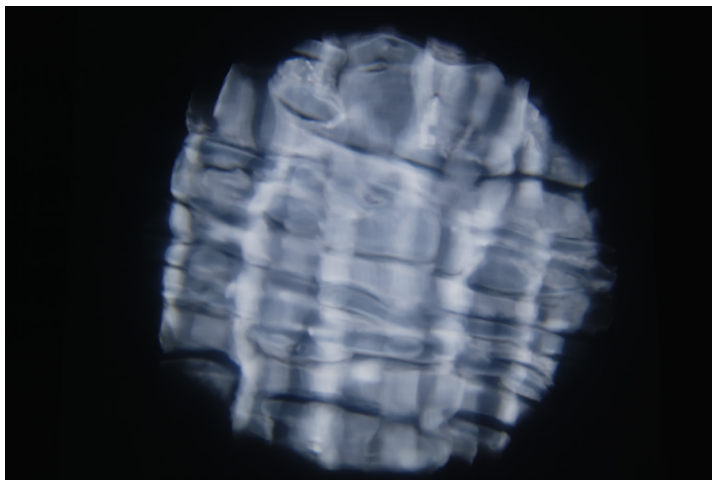
MFX100LWGN, MFX100LWGVW,
MFX100LWTM, MFX100LWTW



MFX100RAINW (x2 accessories)



MFX100RAINW (x2 accessories)

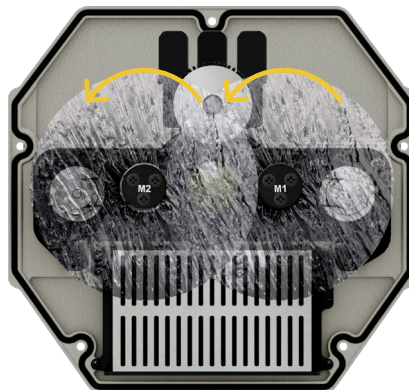


Reflected Water

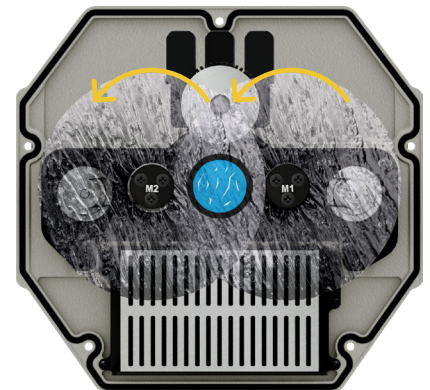
This effect has a wide range of variations that can be obtained by adjusting the animation wheel speed rotation or changing the glass gobo with a different design. Being such an extensive effect, it allows to create always different and unique designs. The limit is your imagination.

Suggested optics:

MFX100LWGN, MFX100LWGVW,
MFX100LWTM, MFX100LWTW



MFX100RAINW (x2 accessories)



MFX100RAINW (x2 accessories)
GBVFX100120F06 (accessories)

