

# Photometric Test Report



## MOSAICOFX100

100W IP66 modular LED image projector  
with dual effect wheel and gobo slot

## CONTENTS

<b>Table of contents</b>	<b>2</b>
<b>Testing process</b>	<b>3</b>
<b>Preset Full on</b>	
Water effect and Gobo Narrow Optic 15° (LWGN)	4
Water effect Medium Optic 30° (LWTM)	9
Water effect Wide Optic 50° (LWTW)	14
Water effect and Gobo Super Wide Optic 70° (LWGVW)	19
Gobo projection Medium Optic 30° (LGBM)	24
Gobo projection Wide Optic 50° (LGBW)	29

## TESTING PROCESS

Prolights has its own optical testing laboratory in order to provide accurate photometric reports for its lighting products. The testing laboratory contains certain variety of precise lighting measurement systems that ensure an optimal reading of all the characteristic parameters of the lighting devices. All measurements are made at a controlled room temperature of 20°C without any external light sources. This photometric report is obtained through the data measured by a high precision measurement system and analyzed by a dedicate software.

### **Prolights measurement instrument**

Prolights measurement instrument is a complete measurement system for any light source. It's equipped with two-axis goniometer, that enables to measure the full 3D distribution field of the light source. This instrument measures the light intensity, the beam angle and the most significative colors parameters, like color temperature, spectral distribution, CRI, CQS, TM-30 with a very high accuracy rate.

**Please Note:** All measurements are made with light source at operating temperature. Before starting the measurement, the instrument analyzes the process of the light source during the heating phase. The measuring process of all the parameters begins only when the light emission is stable, that is with a variation of less than 0.5% in a 15 minutes time frame.

### **Prolights measurement software**

The software provides user friendly interface for the operator who does the measurements, and it also analyzes and processes all the collected data by the instrument. With this software it is possible to see the measured data in real-time and it is possible to examine all the measured data and graphics afterwards as well. All information is collected in a specific Prolights template, and the software creates also IES and LDT files, which are widely used to transfer the photometric data, and to develop lighting system.

Additionally, the fixtures are rechecked using various hand-held instruments like Sekonic C-700 and Gossen Mavospec Base, this is done to ensure, that the data in the photometric report are as accurate as possible.



Total lumen output:

3536 lm

Peak candela output:

46185 cd

Light quality:

CRI: 70,7

Color temperature:

8340 K

## PRODUCT NAME:

Mosaico FX100

## MEASURAMENT CONDITIONS:

Beam angle:

Optic 15° MFX100LWGN

Target:

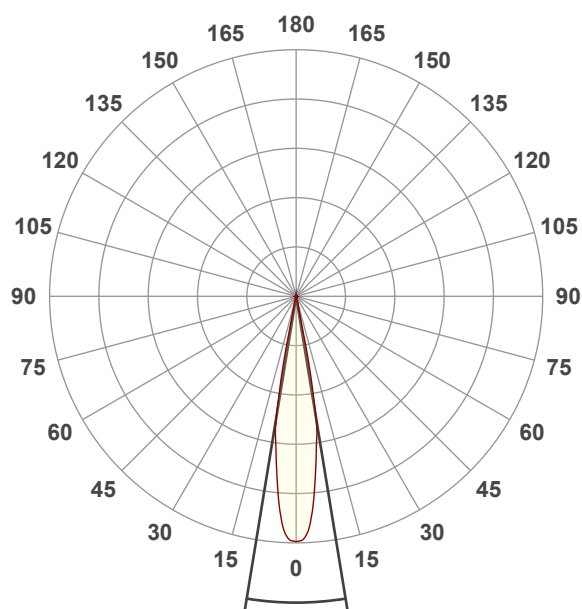
Full On

Operator:

Salvatore Giglio

Date and time:

30/08/2024 14:03:57

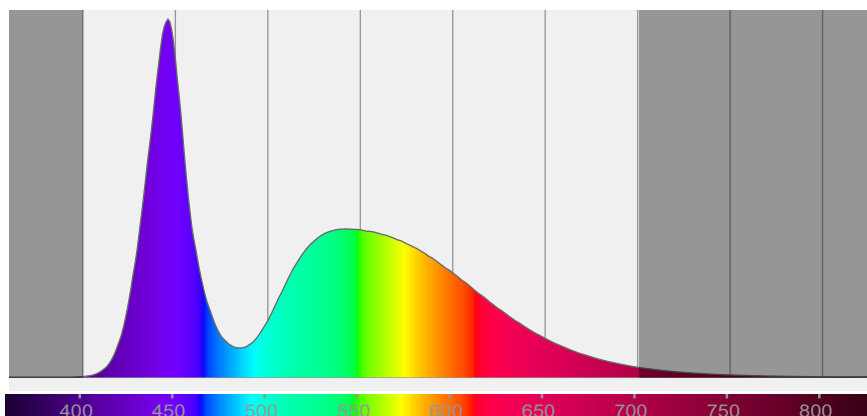


Beam angle 50%: 18,6°

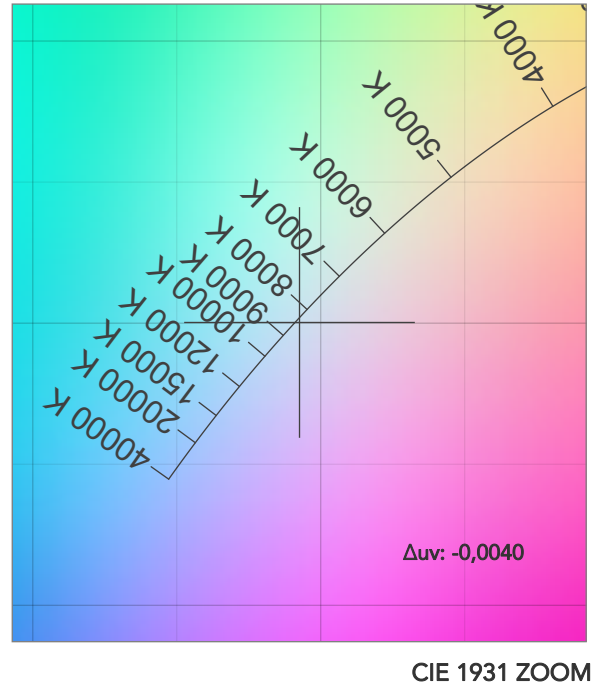
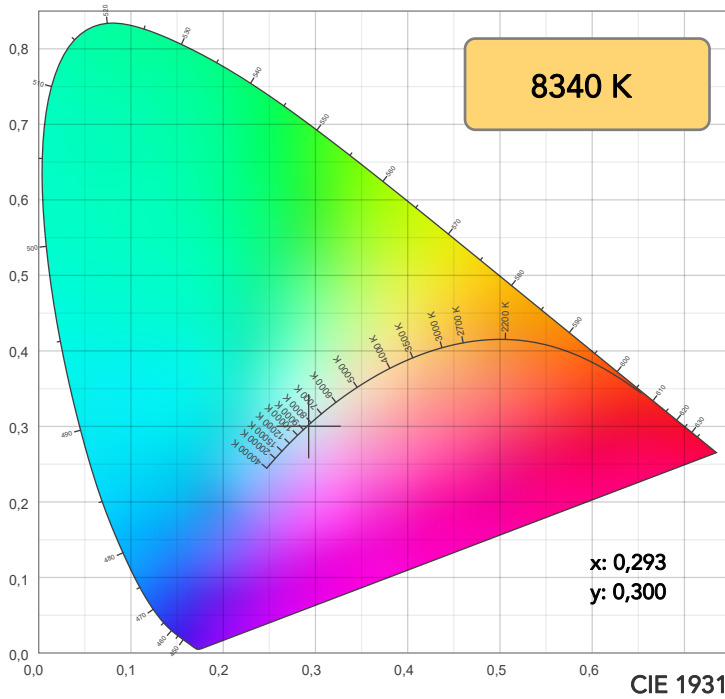
Field angle 10%: 23,6°

Cut off angle 2.5%: 25,2°

## Spectra

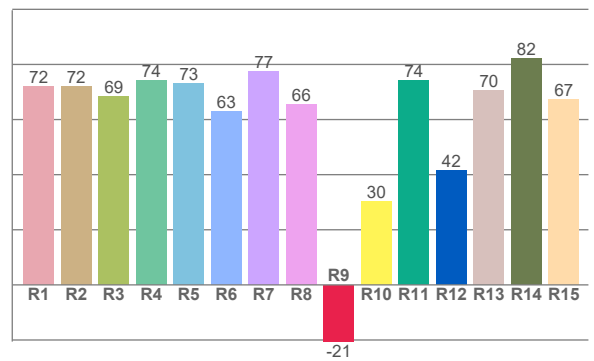
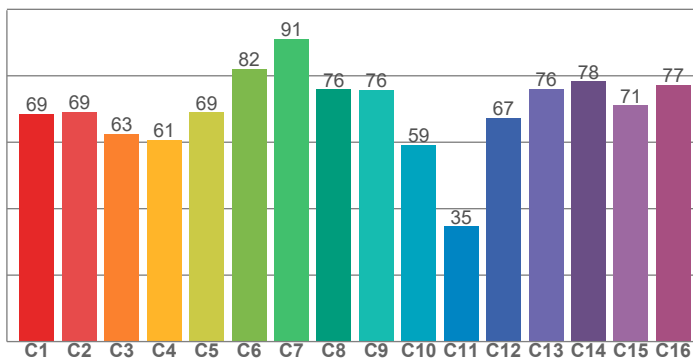


# COLOR DETAILS



TM30: 69,4

CRI: 70,7 (R1-R8)



CRI R values, only R1-R8 are used to calculate final CRI value

R1	R2	R3	R4	R5	R6	R7	R8	R9	R10	R11	R12	R13	R14	R15
72,0	71,9	68,5	74,0	73,3	63,1	77,3	65,6	-20,6	30,3	74,3	41,6	70,5	82,1	67,5

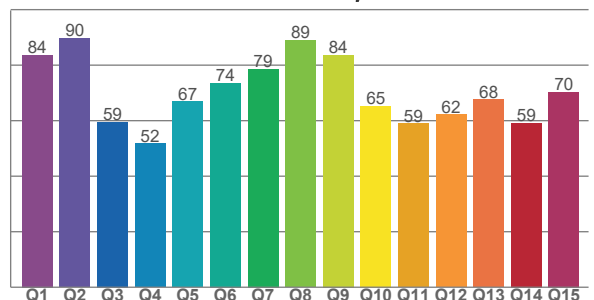
TM30 C values, 16 binned values out of total of 99 C values

C1	C2	C3	C4	C5	C6	C7	C8	C9	C10	C11	C12	C13	C14	C15	C16
68,6	69,1	62,5	60,7	69,0	82,1	91,0	75,9	75,8	59,1	34,7	67,3	76,1	78,3	71,1	77,3

CQS Q values

Q1	Q2	Q3	Q4	Q5	Q6	Q7	Q8	Q9	Q10	Q11	Q12	Q13	Q14	Q15
83,7	89,7	59,5	51,7	66,8	73,5	78,6	89,0	83,6	65,2	59,0	62,2	67,6	59,2	70,3

CQS: 68,5



## COLOR PARAMETERS

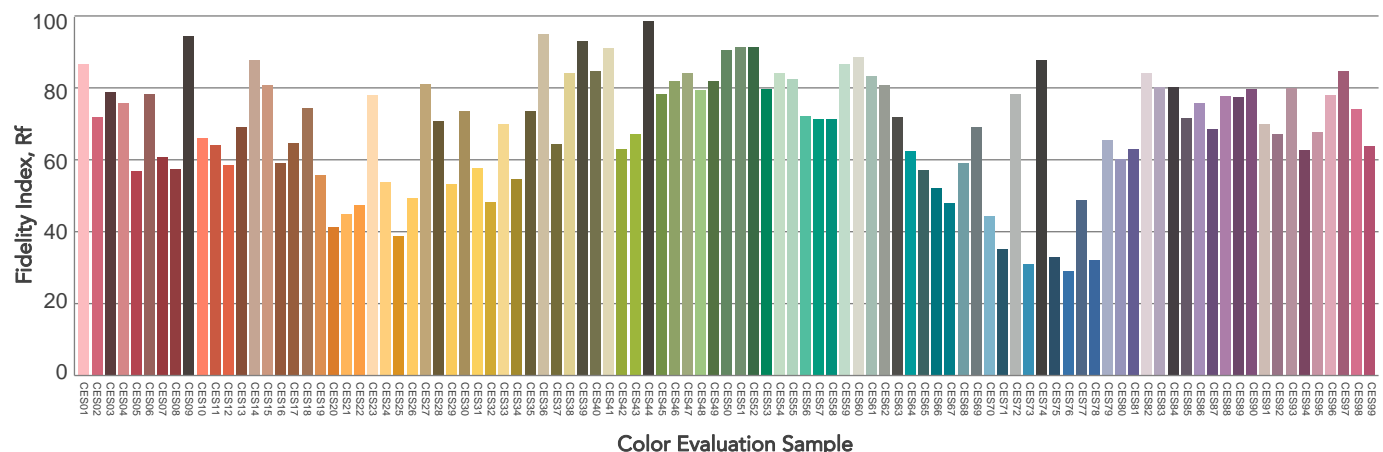
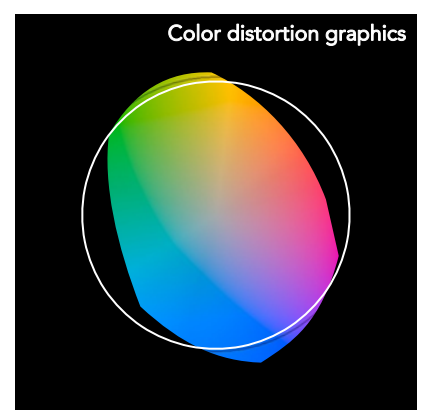
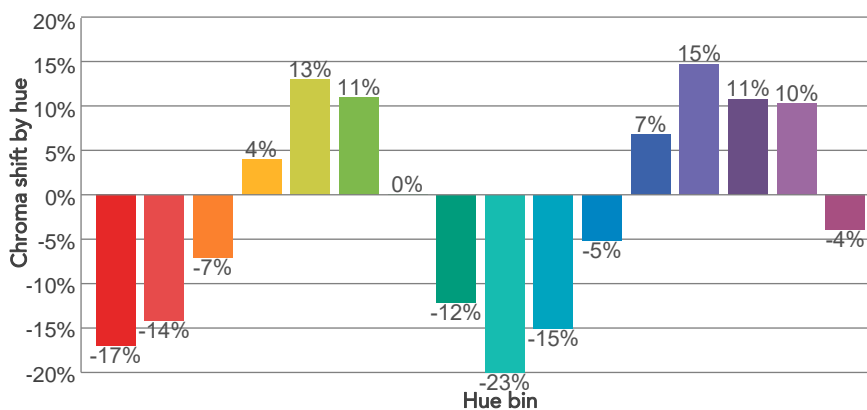
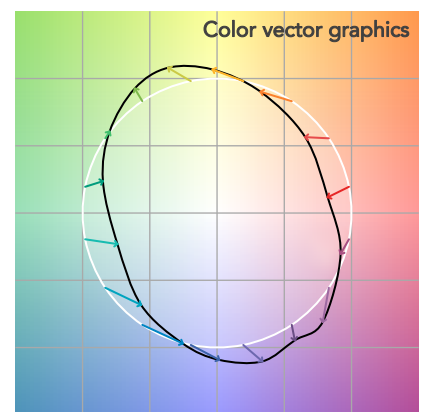
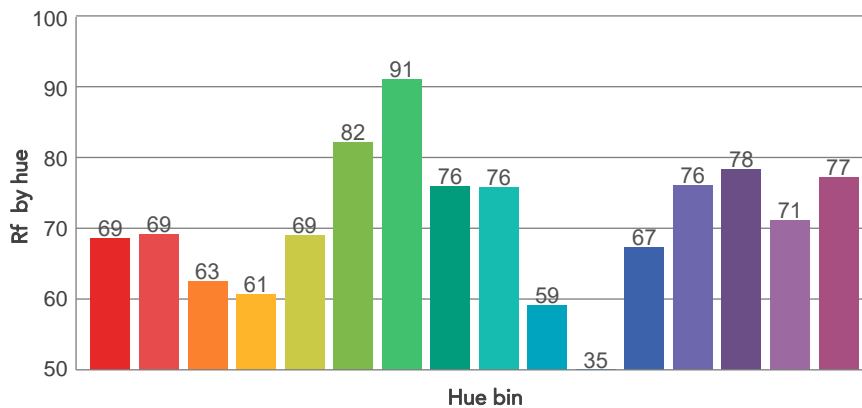
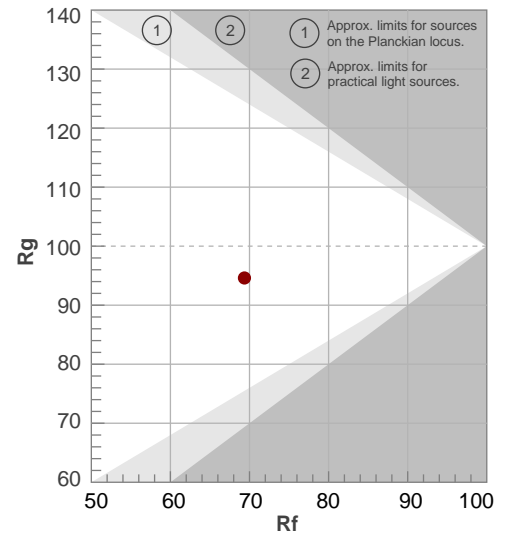
Color temperature	Color rendering index	Red component	Color fidelity	Color gamut	Color quality scale	Television lighting index	Color coordinate cie 1931	Color coordinate cie 1931	Color deviation from black body
CCT	CRI	CRI R9	TM30 Rf	TM30 Rg	CQS	TLCI	x	y	$\Delta uv$
8340 K	70,7	-20,6	69,4	94,6	68,5	46	0,293	0,300	-0,0040

# TM30 DETAILS

**Rf 69,4**  
Fidelity index Rf

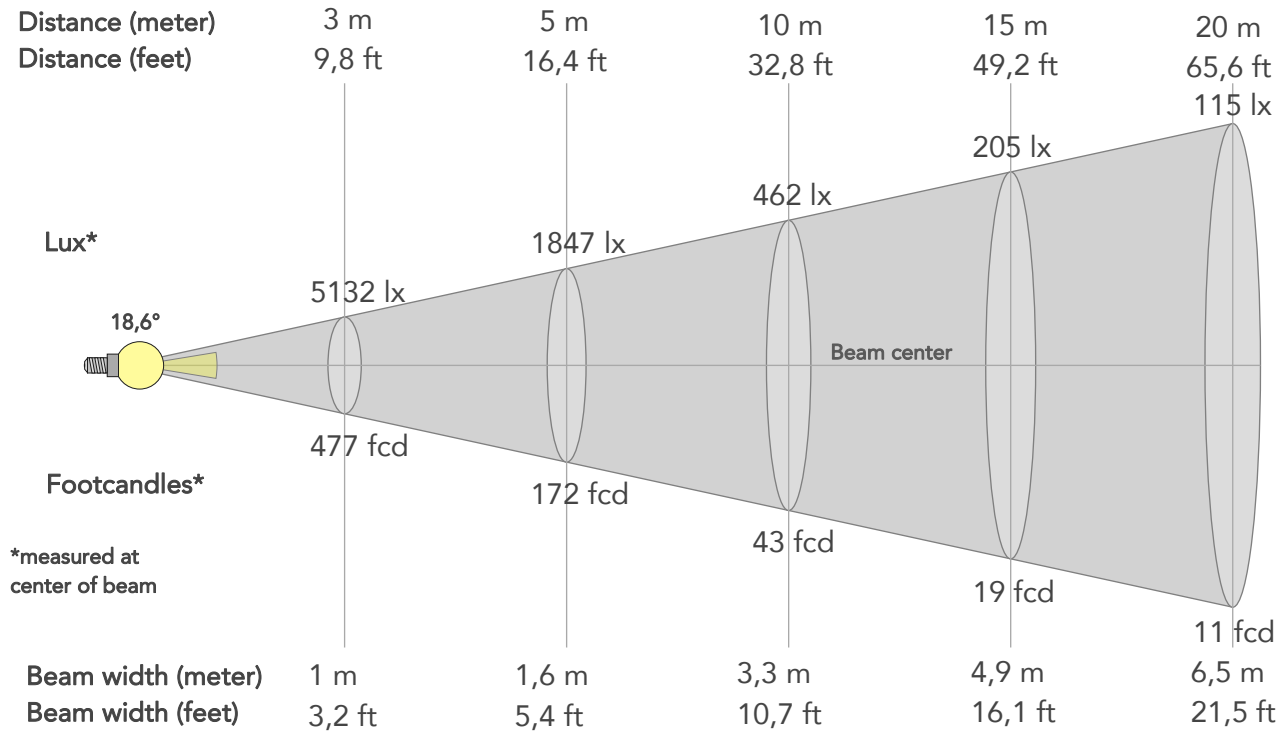
**Rg 94,6**  
Gammut index

Hue Bin	R <sub>f</sub>	Graphic shifts (%)	
		Chroma	Hue
1	69	-17%	-5%
2	69	-14%	10%
3	63	-7%	23%
4	61	4%	24%
5	69	13%	15%
6	82	11%	-1%
7	91	0%	-6%
8	76	-12%	-7%
9	76	-23%	8%
10	59	-15%	25%
11	35	-5%	33%
12	67	7%	23%
13	76	15%	12%
14	78	11%	-5%
15	71	10%	-24%
16	77	-4%	-12%



# BEAM DETAILS

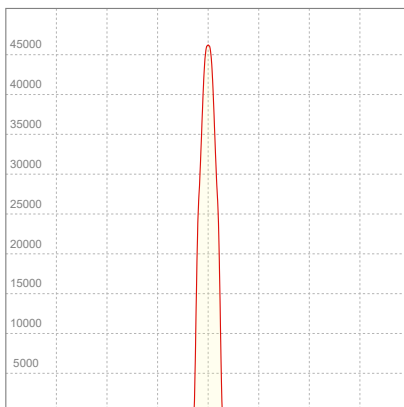
Beam angle 50%	Field angle 10%	Cut off angle 2,5%	Intensity ratio in 120° cone	Intensity ratio in 90° cone
18,6°	23,6°	25,2°	99,5%	99,4%



## BEAM INTENSITIES AND WIDTHS

Distance	1m	2m	3m	4m	5m	7,5m	10m	15m	20m	25m	30m	40m	50m
Distance	3,3ft	6,6ft	9,8ft	13,1ft	16,4ft	24,6ft	32,8ft	49,2ft	65,6ft	82ft	98,4ft	131,2ft	164ft
Lux	46185lx	11546lx	5132lx	2887lx	1847lx	821lx	462lx	205lx	115lx	74lx	51lx	29lx	18lx
Footcand.	4291fcd	1073fcd	477fcd	268fcd	172fcd	76fcd	43fcd	19fcd	11fcd	7fcd	5fcd	3fcd	2fcd
Beam wid.	0,3m	0,7m	1m	1,3m	1,6m	2,5m	3,3m	4,9m	6,5m	8,2m	9,8m	13,1m	16,4m
Beam wid.	1,1ft	2,2ft	3,2ft	4,3ft	5,4ft	8ft	10,7ft	16,1ft	21,5ft	26,8ft	32,2ft	42,9ft	53,7ft

## LINEAR DISTRIBUTION DIAGRAM

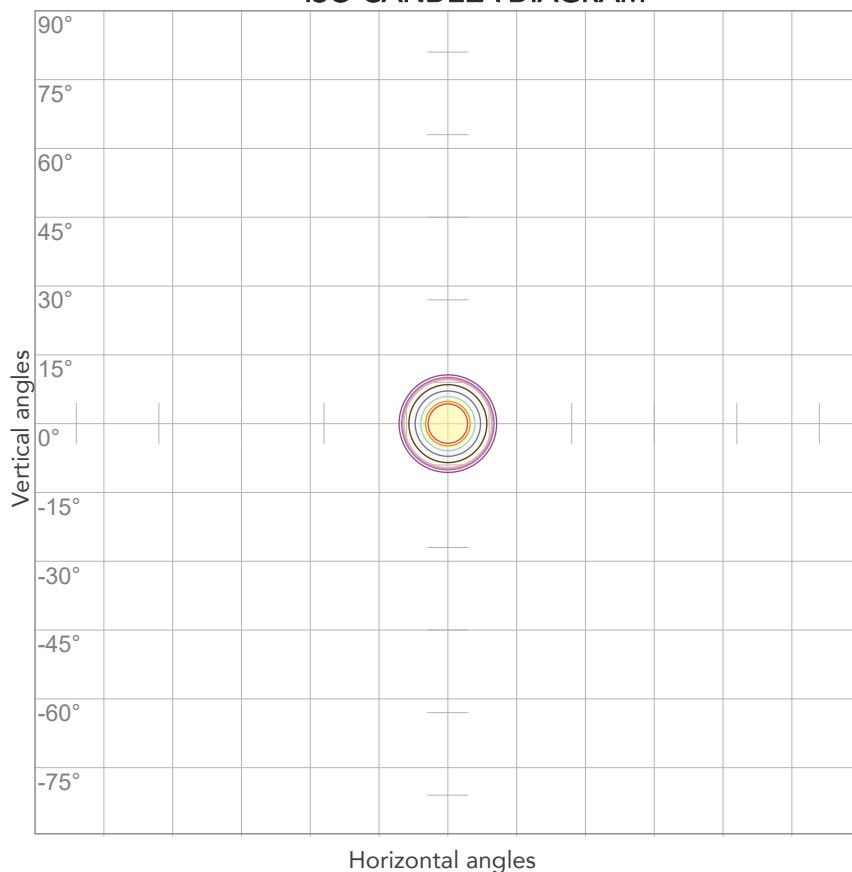


## ELECTRICAL SPECIFICATIONS

Input voltage	Input current	Input power	Power FC	Efficiency
225V	0,534A	114,9W	0,96	31lm/W

# ISO DIAGRAMS

## ISO CANDELA DIAGRAM



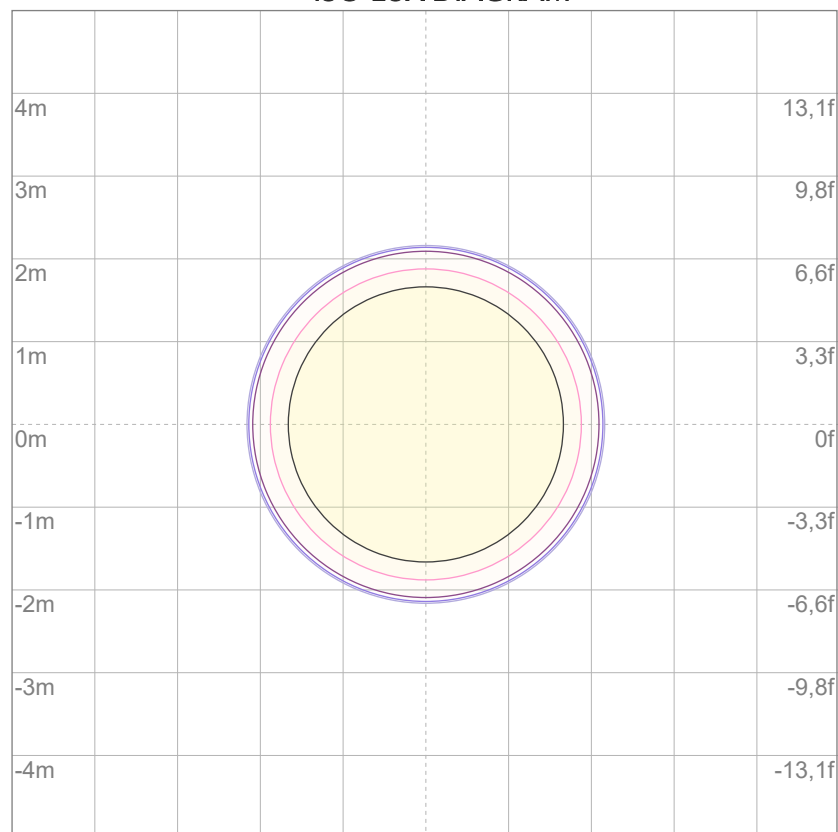
10%	4619 cd
20%	9237 cd
30%	13856 cd
40%	18474 cd
50%	23093 cd
60%	27711 cd
70%	32330 cd
80%	36948 cd

### Conditions:

Number of c-planes: 2

Candela at center: 46185 cd

## ISO LUX DIAGRAM



3%	13,9 lx
5%	23,1 lx
10%	46,2 lx
30%	139 lx
50%	231 lx

### Conditions:

Number of c-planes: 2

Lux at center: 462 lx

*Lux distribution on a surface when lamp is mounted at 10 meters from the surface.*





Total lumen output:

3545 lm

Peak candela output:

26583 cd

Light quality:

CRI: 70,7

Color temperature:

8177 K

## PRODUCT NAME:

Mosaico FX100

## MEASURAMENT CONDITIONS:

Beam angle:

Optic 30° MFX100LWTM

Target:

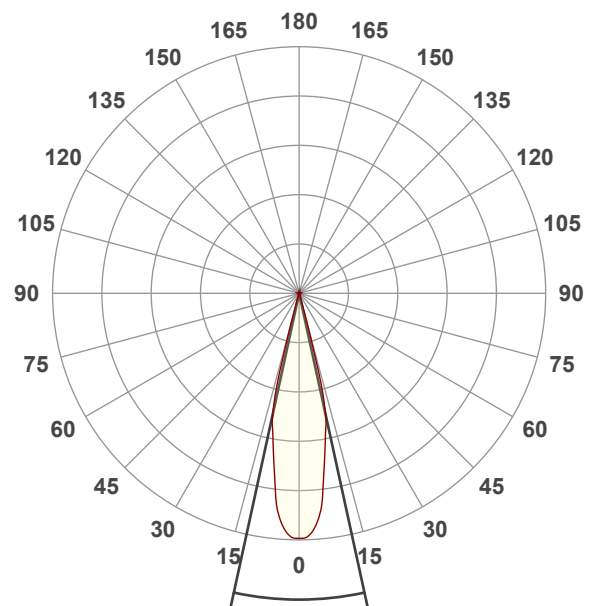
Full On

Operator:

Salvatore Giglio

Date and time:

30/08/2024 14:08:28

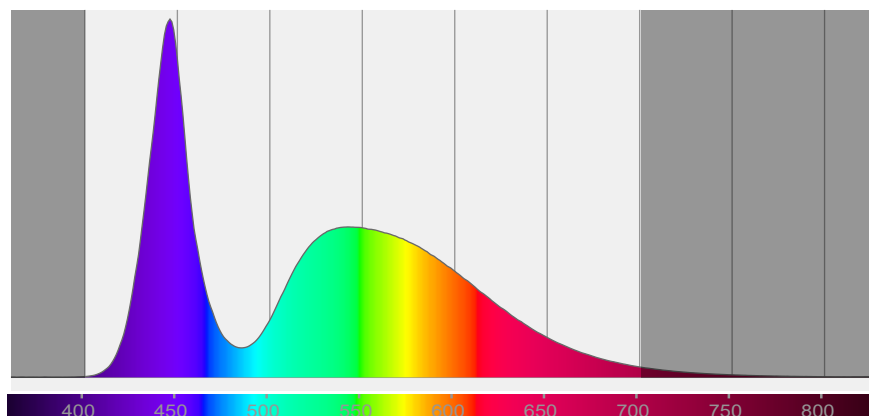


Beam angle 50%: 24,6°

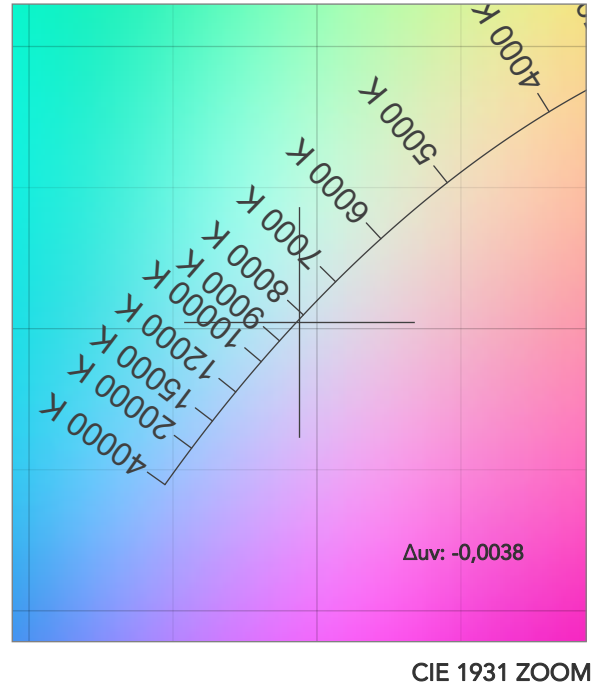
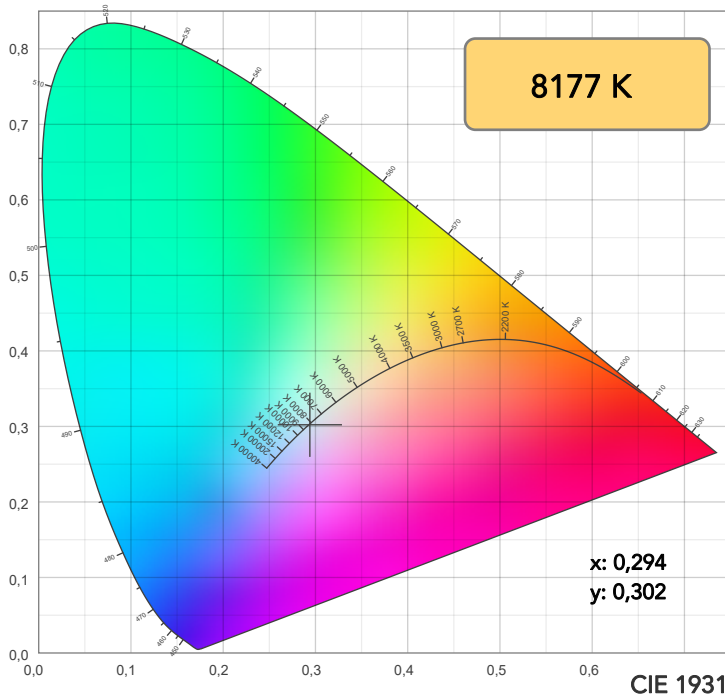
Field angle 10%: 30,9°

Cut off angle 2.5%: 32,7°

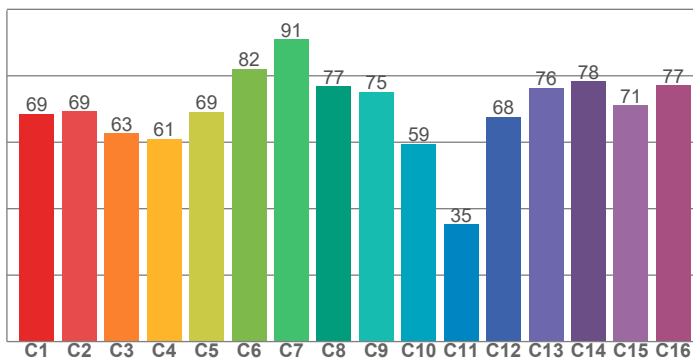
## Spectra



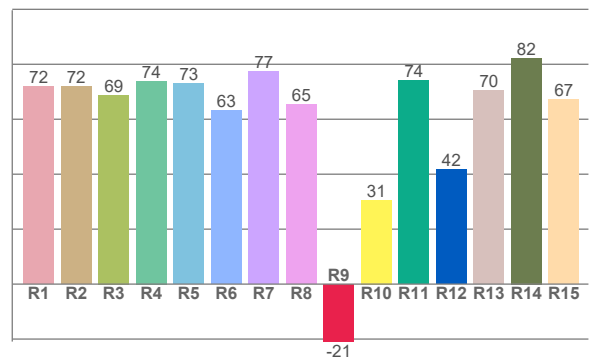
## COLOR DETAILS



TM30: 69,5



CRI: 70,7 (R1-R8)



CRI R values, only R1-R8 are used to calculate final CRI value

R1	R2	R3	R4	R5	R6	R7	R8	R9	R10	R11	R12	R13	R14	R15
71,8	71,9	68,8	73,9	73,1	63,2	77,4	65,4	-20,9	30,6	74,1	41,6	70,4	82,3	67,3

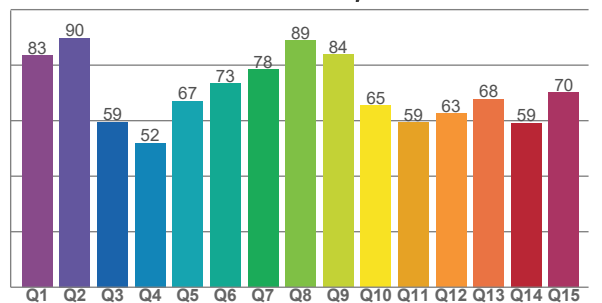
TM30 C values, 16 binned values out of total of 99 C values

C1	C2	C3	C4	C5	C6	C7	C8	C9	C10	C11	C12	C13	C14	C15	C16
68,6	69,3	62,7	61,0	69,1	82,1	90,9	76,8	75,2	59,4	35,2	67,6	76,3	78,3	71,1	77,2

CQS Q values

Q1	Q2	Q3	Q4	Q5	Q6	Q7	Q8	Q9	Q10	Q11	Q12	Q13	Q14	Q15
83,5	89,7	59,5	52,0	67,0	73,4	78,4	88,8	83,8	65,4	59,3	62,5	67,8	59,1	70,2

CQS: 68,6



## COLOR PARAMETERS

Color temperature	Color rendering index	Red component	Color fidelity	Color gamut	Color quality scale	Television lighting index	Color coordinate cie 1931	Color coordinate cie 1931	Color deviation from black body
CCT	CRI	CRI R9	TM30 Rf	TM30 Rg	CQS	TLCI	x	y	$\Delta uv$
8177 K	70,7	-20,9	69,5	94,5	68,6	46	0,294	0,302	-0,0038

# TM30 DETAILS

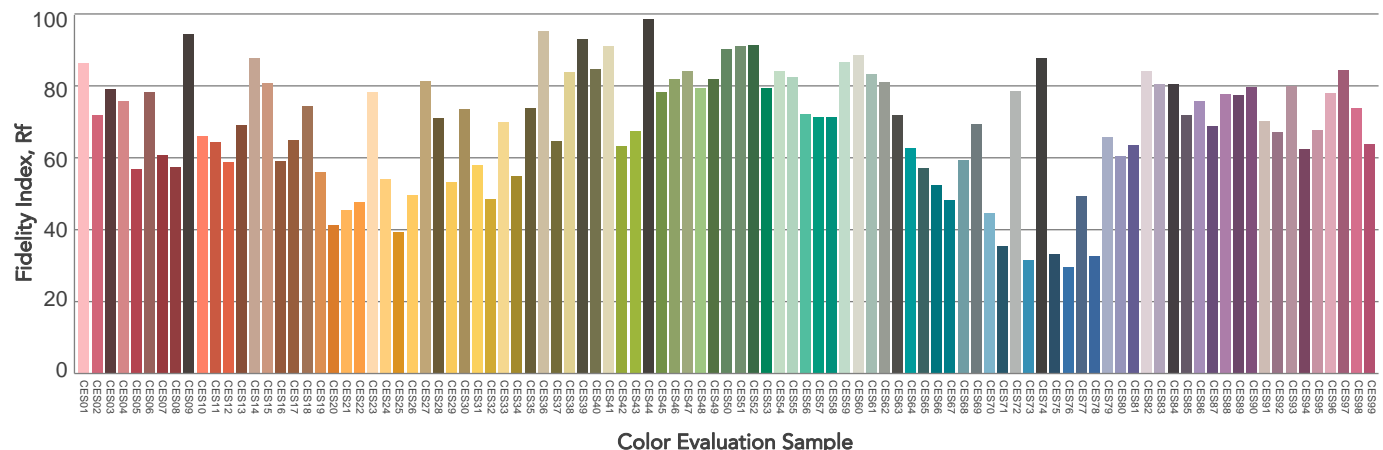
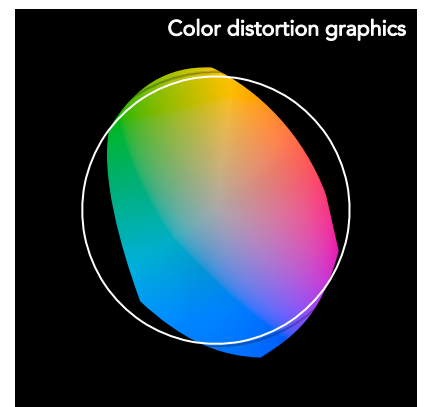
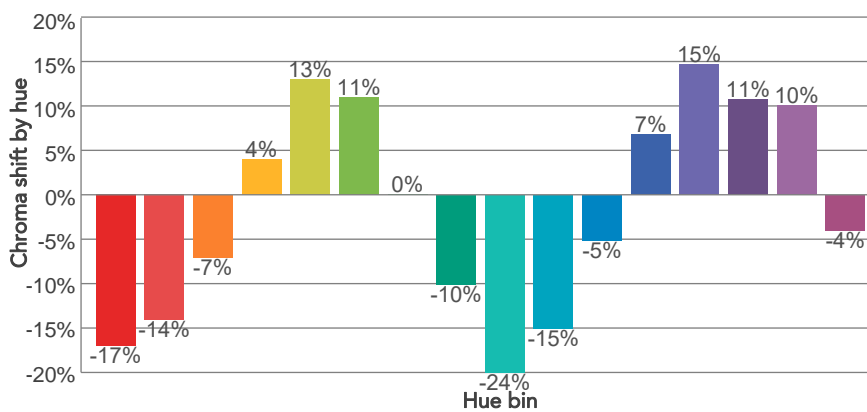
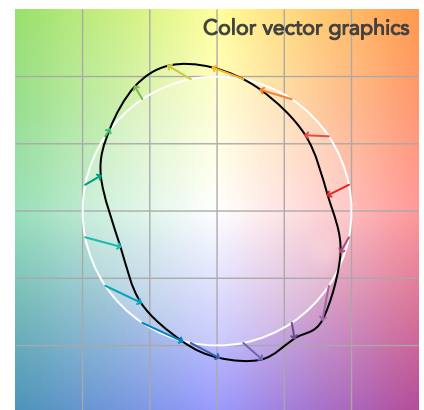
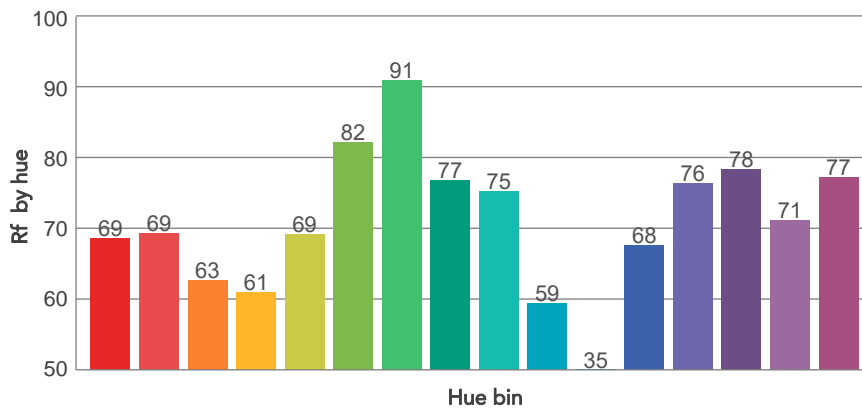
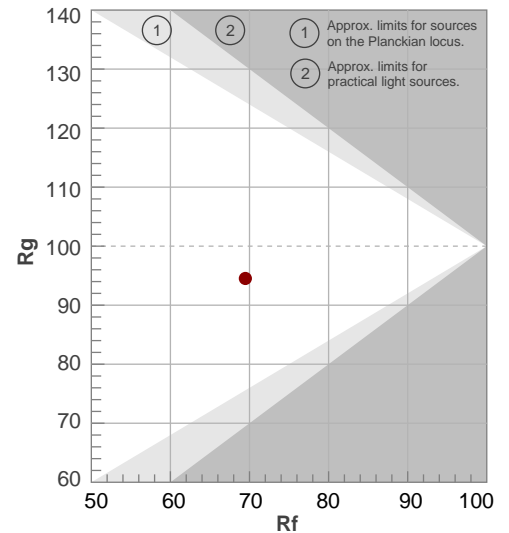
**Rf 69,5**

Fidelity index Rf

**Rg 94,5**

Gammut index

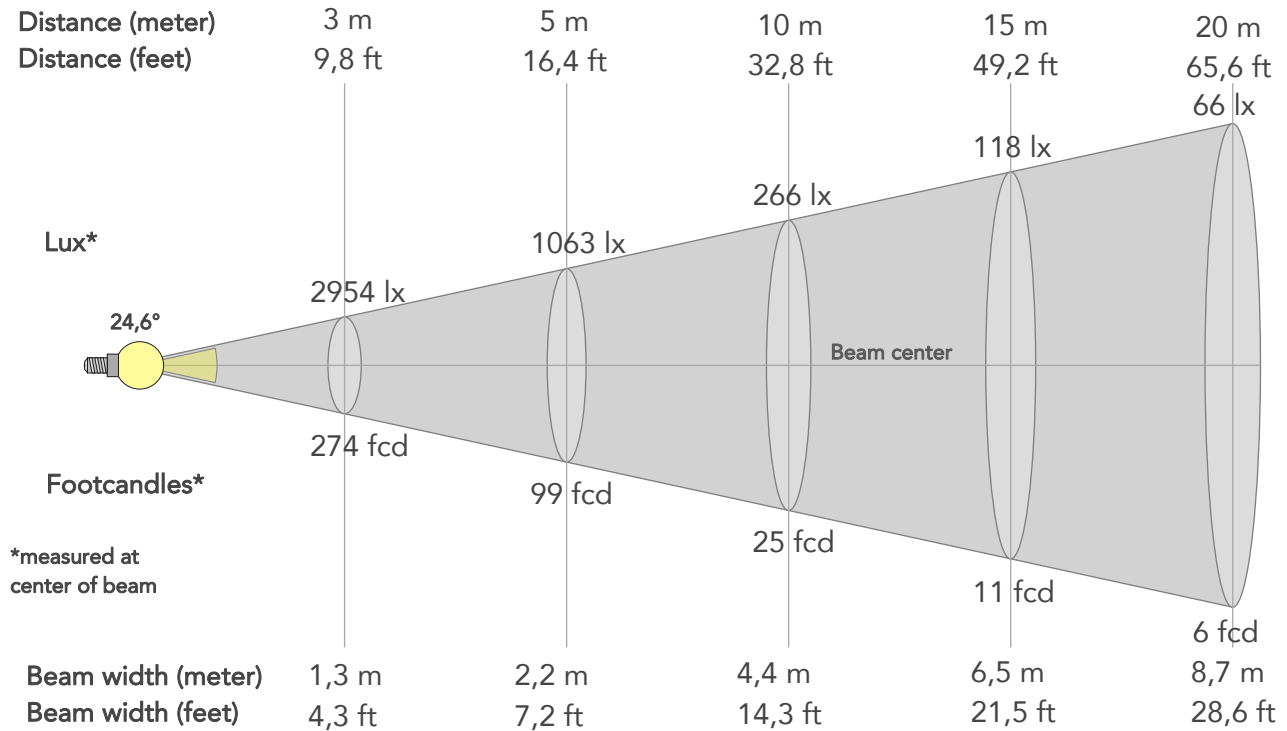
Hue Bin	R <sub>f</sub>	Graphic shifts (%)	
		Chroma	Hue
1	69	-17%	-5%
2	69	-14%	10%
3	63	-7%	23%
4	61	4%	24%
5	69	13%	15%
6	82	11%	-1%
7	91	0%	-6%
8	77	-10%	-9%
9	75	-24%	12%
10	59	-15%	25%
11	35	-5%	32%
12	68	7%	23%
13	76	15%	11%
14	78	11%	-5%
15	71	10%	-24%
16	77	-4%	-12%



# BEAM DETAILS



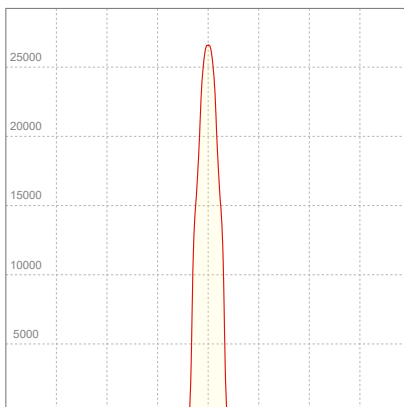
Beam angle 50%	Field angle 10%	Cut off angle 2,5%	Intensity ratio in 120° cone	Intensity ratio in 90° cone
24,6°	30,9°	32,7°	99,4%	99,2%



## BEAM INTENSITIES AND WIDTHS

Distance	1m	2m	3m	4m	5m	7,5m	10m	15m	20m	25m	30m	40m	50m
Distance	3,3ft	6,6ft	9,8ft	13,1ft	16,4ft	24,6ft	32,8ft	49,2ft	65,6ft	82ft	98,4ft	131,2ft	164ft
Lux	26583lx	6646lx	2954lx	1661lx	1063lx	473lx	266lx	118lx	66lx	43lx	30lx	17lx	11lx
Footcand.	2470fcd	617fcd	274fcd	154fcd	99fcd	44fcd	25fcd	11fcd	6fcd	4fcd	3fcd	2fcd	1fcd
Beam wid.	0,4m	0,9m	1,3m	1,7m	2,2m	3,3m	4,4m	6,5m	8,7m	10,9m	13,1m	17,5m	21,8m
Beam wid.	1,4ft	2,9ft	4,3ft	5,7ft	7,2ft	10,7ft	14,3ft	21,5ft	28,6ft	35,8ft	43ft	57,3ft	71,6ft

## LINEAR DISTRIBUTION DIAGRAM

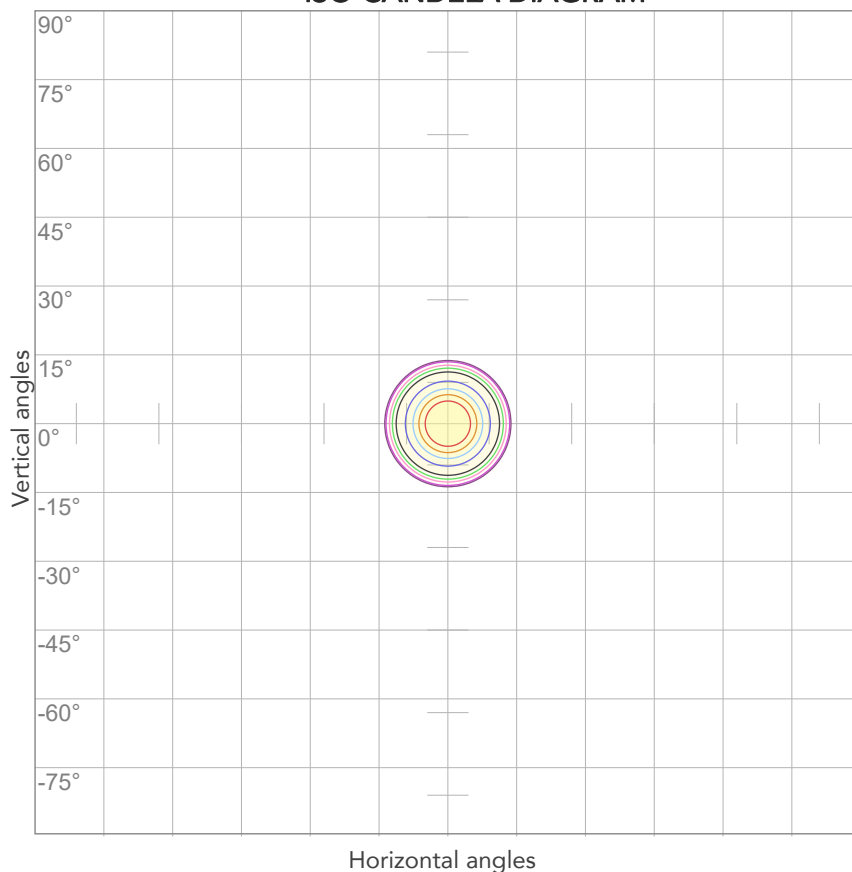


## ELECTRICAL SPECIFICATIONS

Input voltage	Input current	Input power	Power FC	Efficiency
224V	0,537A	115W	0,96	31lm/W

# ISO DIAGRAMS

## ISO CANDELA DIAGRAM



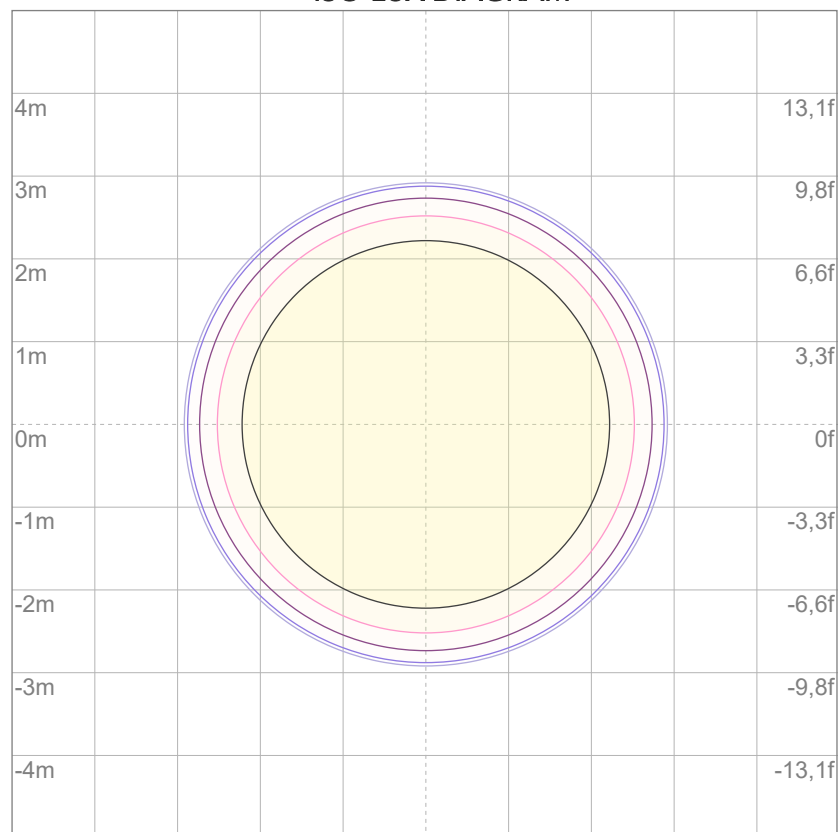
10%	2658 cd
20%	5317 cd
30%	7975 cd
40%	10633 cd
50%	13292 cd
60%	15950 cd
70%	18608 cd
80%	21267 cd

### Conditions:

Number of c-planes: 2

Candela at center: 26583 cd

## ISO LUX DIAGRAM



3%	7,97 lx
5%	13,3 lx
10%	26,6 lx
30%	79,7 lx
50%	133 lx

### Conditions:

Number of c-planes: 2

Lux at center: 266 lx

*Lux distribution on a surface when lamp is mounted at 10 meters from the surface.*



Total lumen output:

3731 lm

Peak candela output:

11923 cd

Light quality:

CRI: 70,6

Color temperature:

8125 K

## PRODUCT NAME:

Mosaico FX100

## MEASURAMENT CONDITIONS:

Beam angle:

Optic 50° MFX100LWTM

Target:

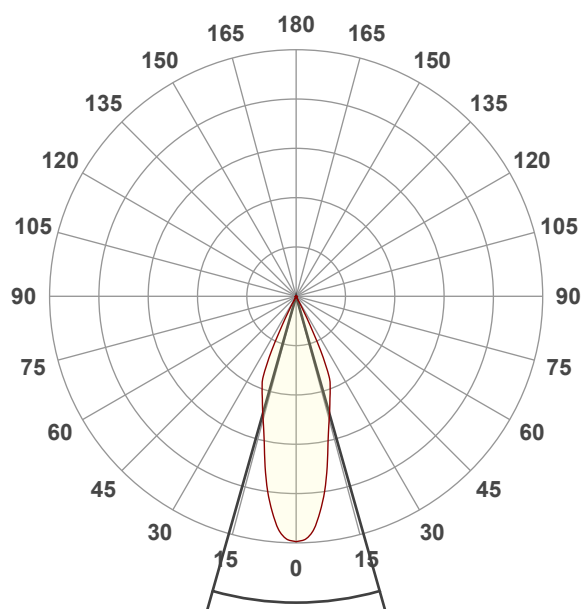
Full On

Operator:

Salvatore Giglio

Date and time:

30/08/2024 13:30:01

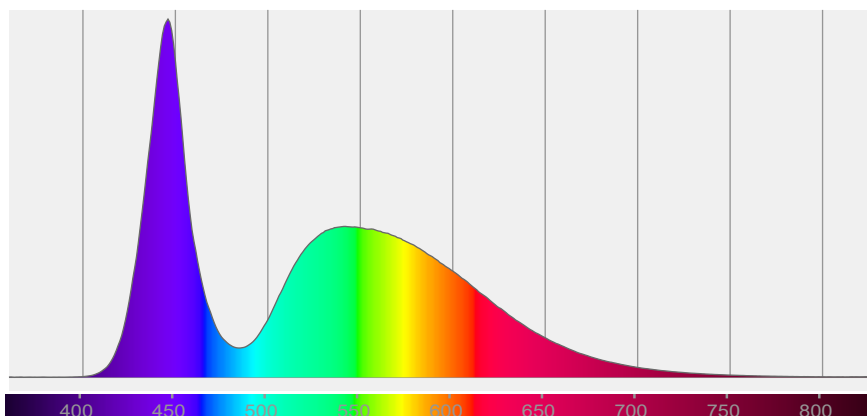


Beam angle 50%: 31,7°

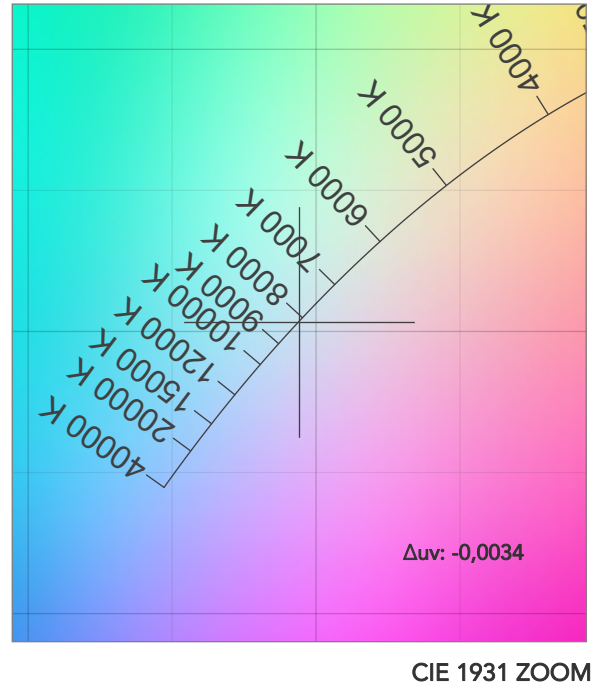
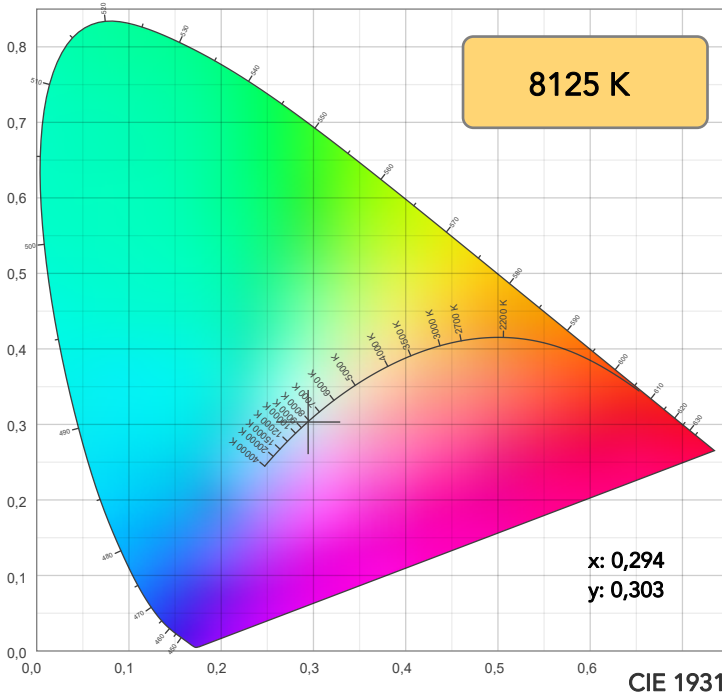
Field angle 10%: 52,6°

Cut off angle 2.5%: 55,8°

## Spectra

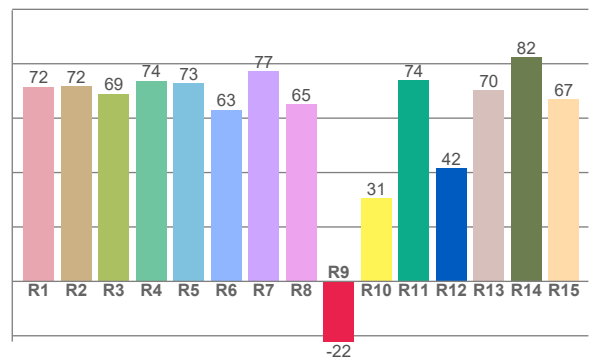
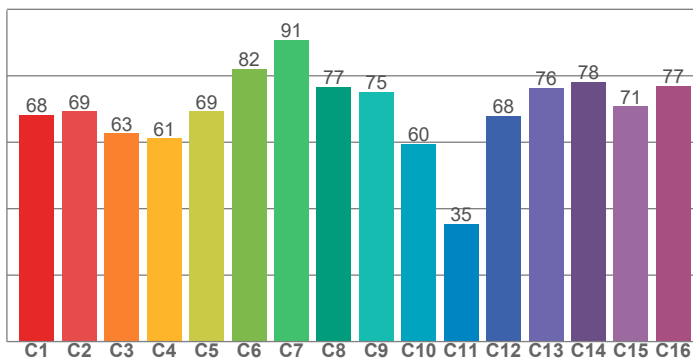


## COLOR DETAILS



TM30: 69,5

CRI: 70,6 (R1-R8)



CRI R values, only R1-R8 are used to calculate final CRI value

R1	R2	R3	R4	R5	R6	R7	R8	R9	R10	R11	R12	R13	R14	R15
71,5	71,8	69,0	73,8	72,9	63,1	77,3	65,1	-22,1	30,5	73,9	41,5	70,2	82,4	66,9

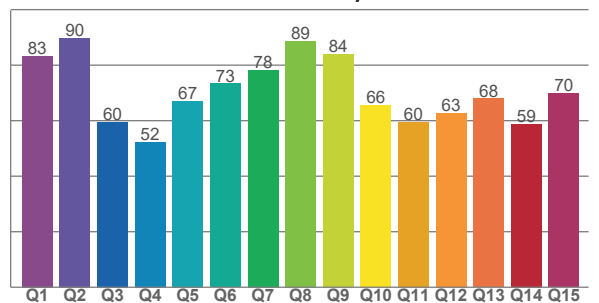
TM30 C values, 16 binned values out of total of 99 C values

C1	C2	C3	C4	C5	C6	C7	C8	C9	C10	C11	C12	C13	C14	C15	C16
68,3	69,2	62,7	61,1	69,3	82,1	90,8	76,6	75,2	59,6	35,5	67,9	76,4	78,2	70,8	76,9

CQS Q values

Q1	Q2	Q3	Q4	Q5	Q6	Q7	Q8	Q9	Q10	Q11	Q12	Q13	Q14	Q15
83,3	89,8	59,6	52,3	67,0	73,3	78,3	88,7	84,0	65,6	59,5	62,7	67,9	58,9	69,9

CQS: 68,6



## COLOR PARAMETERS

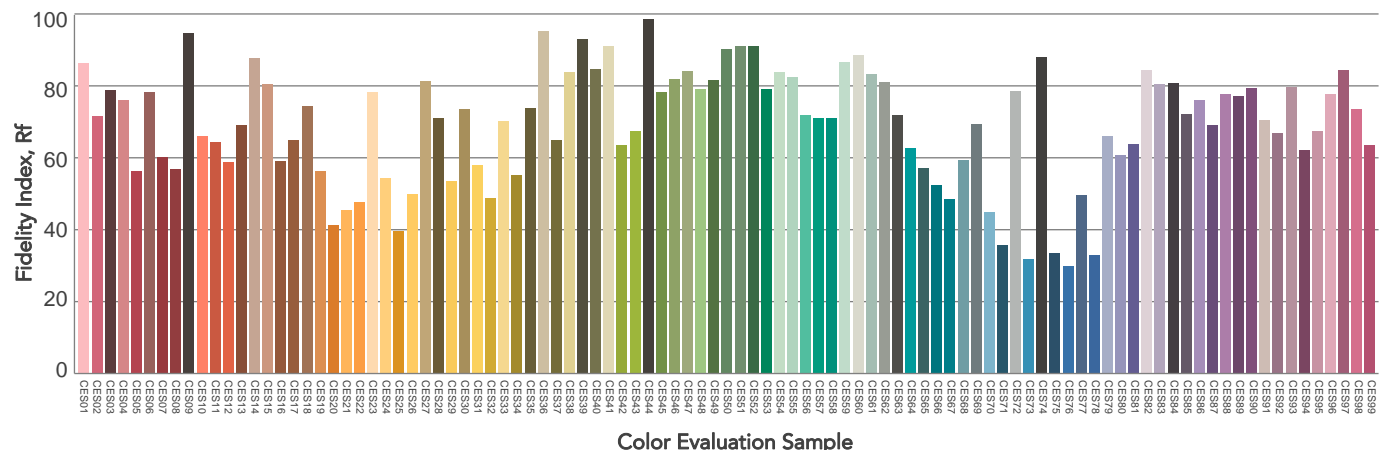
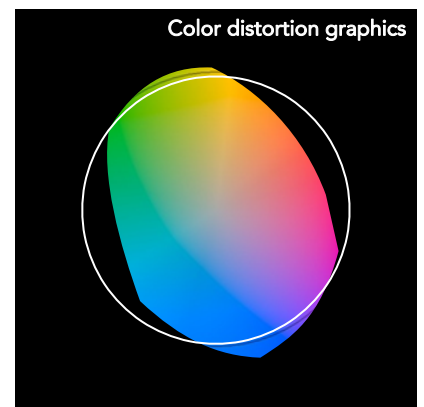
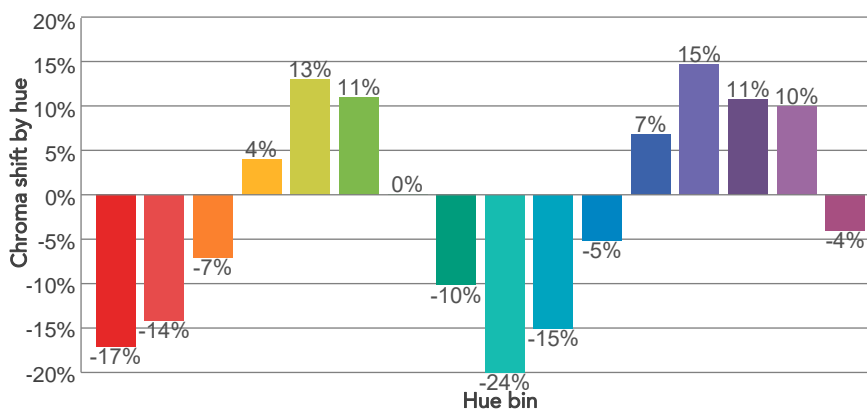
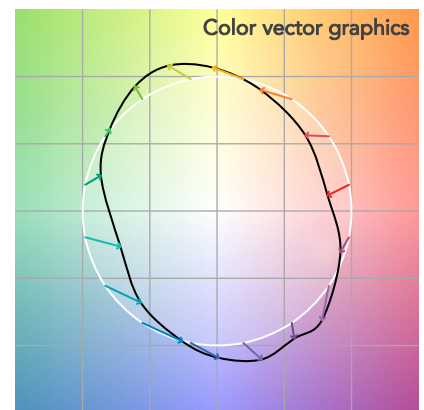
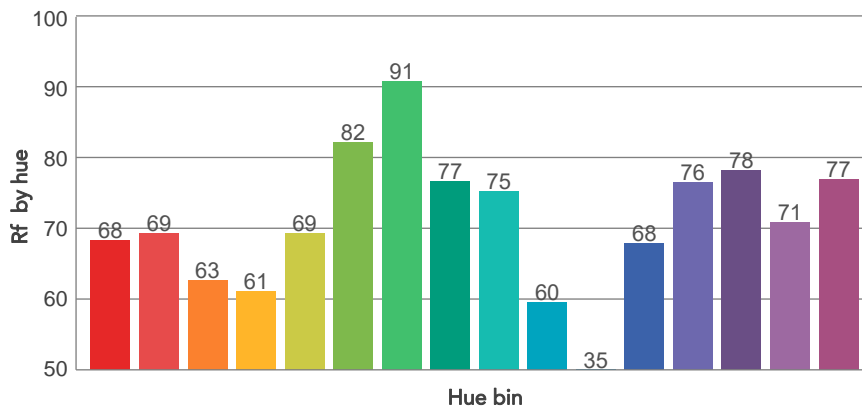
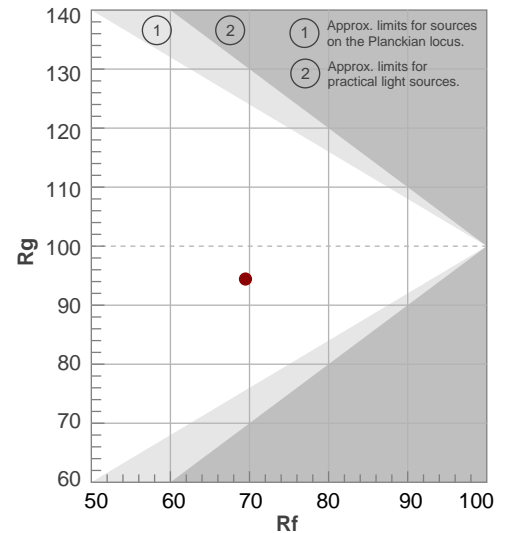
Color temperature	Color rendering index	Red component	Color fidelity	Color gamut	Color quality scale	Television lighting index	Color coordinate cie 1931	Color coordinate cie 1931	Color deviation from black body
CCT	CRI	CRI R9	TM30 Rf	TM30 Rg	CQS	TLCI	x	y	Δuv
8125 K	70,6	-22,1	69,5	94,4	68,6	46	0,294	0,303	-0,0034

# TM30 DETAILS

**Rf 69,5**  
Fidelity index Rf

**Rg 94,4**  
Gammut index

Hue Bin	R <sub>f</sub>	Graphic shifts (%)	
		Chroma	Hue
1	68	-17%	-5%
2	69	-14%	10%
3	63	-7%	23%
4	61	4%	24%
5	69	13%	15%
6	82	11%	-1%
7	91	0%	-6%
8	77	-10%	-9%
9	75	-24%	12%
10	60	-15%	25%
11	35	-5%	32%
12	68	7%	22%
13	76	15%	11%
14	78	11%	-5%
15	71	10%	-24%
16	77	-4%	-12%

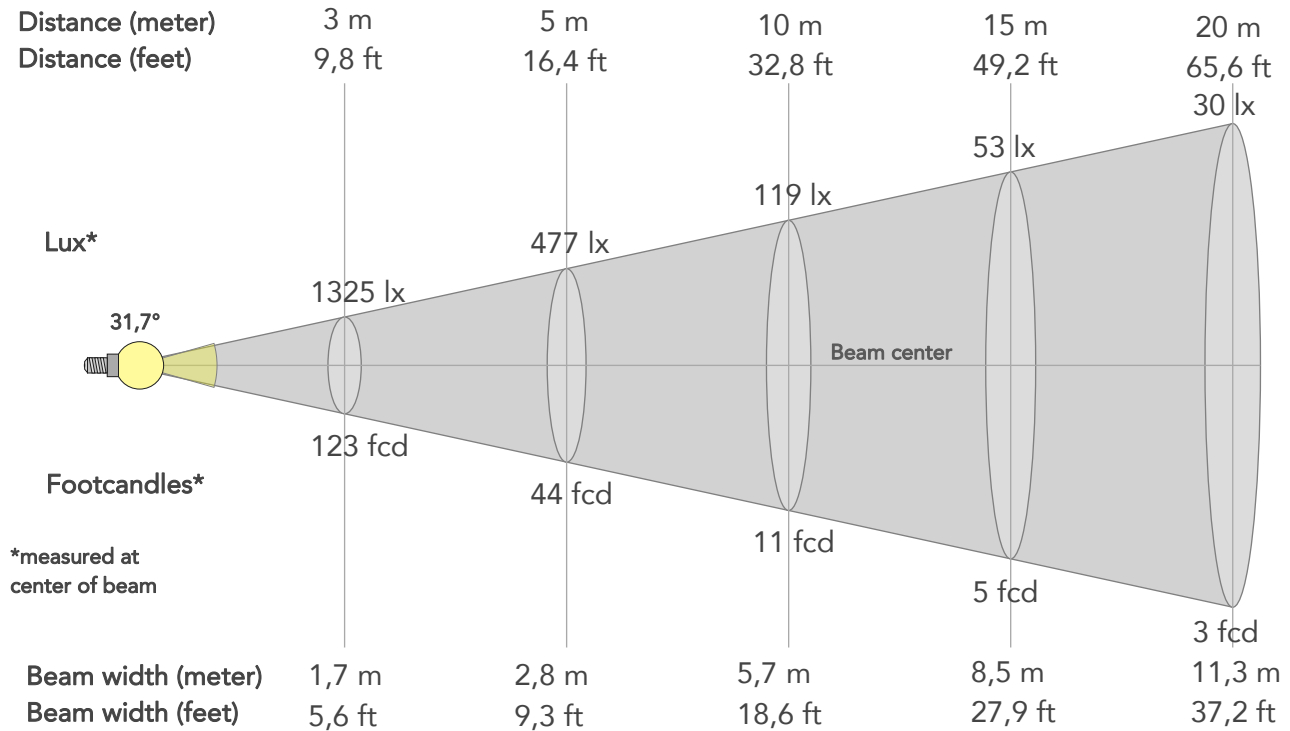




# BEAM DETAILS



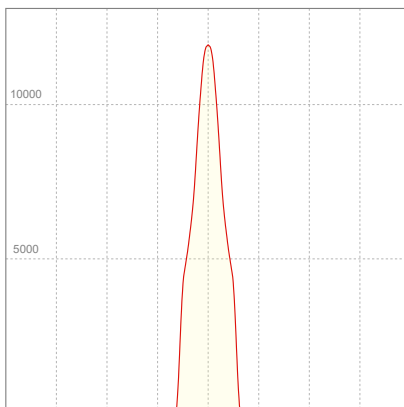
Beam angle 50%	Field angle 10%	Cut off angle 2,5%	Intensity ratio in 120° cone	Intensity ratio in 90° cone
31,7°	52,6°	55,8°	99,5%	99,4%



## BEAM INTENSITIES AND WIDTHS

Distance	1m	2m	3m	4m	5m	7,5m	10m	15m	20m	25m	30m	40m	50m
Distance	3,3ft	6,6ft	9,8ft	13,1ft	16,4ft	24,6ft	32,8ft	49,2ft	65,6ft	82ft	98,4ft	131,2ft	164ft
Lux	11923lx	2981lx	1325lx	745lx	477lx	212lx	119lx	53lx	30lx	19lx	13lx	7lx	5lx
Footcand.	1108fcd	277fcd	123fcd	69fcd	44fcd	20fcd	11fcd	5fcd	3fcd	2fcd	1fcd	1fcd	0fcd
Beam wid.	0,6m	1,1m	1,7m	2,3m	2,8m	4,3m	5,7m	8,5m	11,3m	14,2m	17m	22,7m	28,3m
Beam wid.	1,9ft	3,7ft	5,6ft	7,4ft	9,3ft	13,9ft	18,6ft	27,9ft	37,2ft	46,5ft	55,8ft	74,4ft	93ft

## LINEAR DISTRIBUTION DIAGRAM

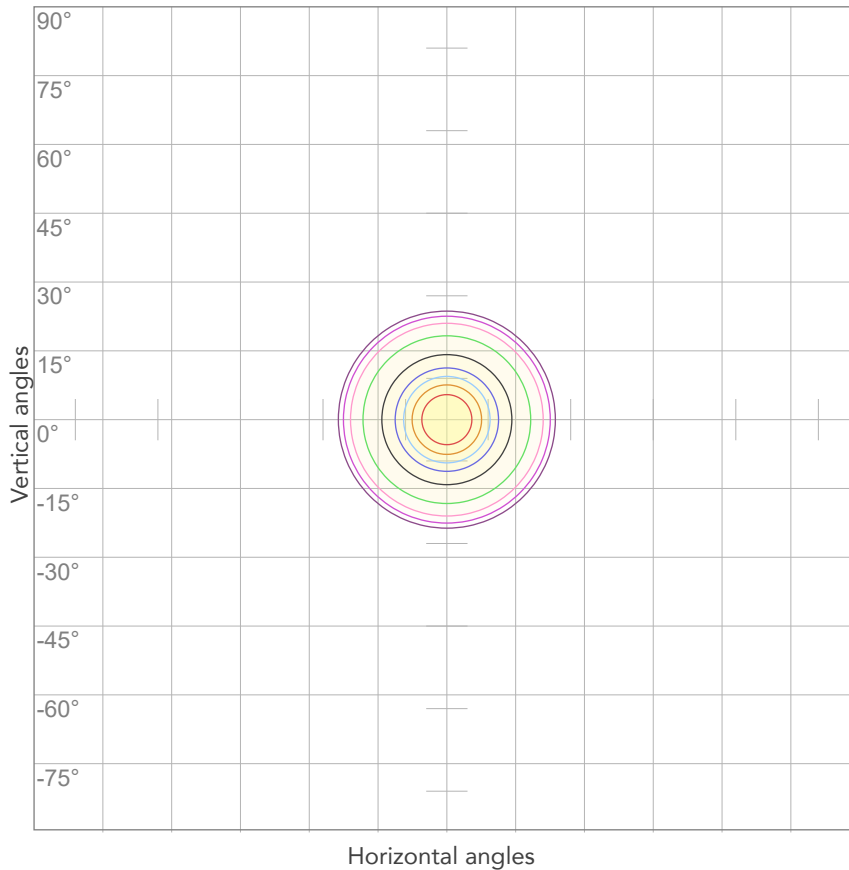


## ELECTRICAL SPECIFICATIONS

Input voltage	Input current	Input power	Power FC	Effeciency
224V	0,538A	115,8W	0,96	32lm/W

# ISO DIAGRAMS

## ISO CANDELA DIAGRAM



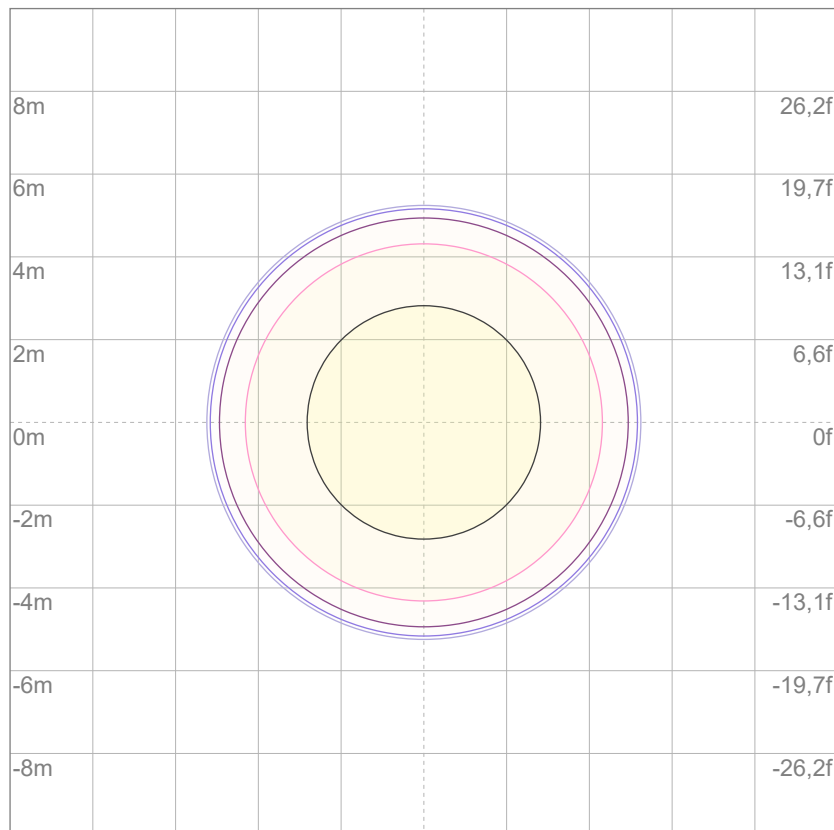
10%	1192 cd
20%	2385 cd
30%	3577 cd
40%	4769 cd
50%	5961 cd
60%	7154 cd
70%	8346 cd
80%	9538 cd

### Conditions:

Number of c-planes: 2

Candela at center: 11923 cd

## ISO LUX DIAGRAM



3%	3,58 lx
5%	5,96 lx
10%	11,9 lx
30%	35,8 lx
50%	59,6 lx

### Conditions:

Number of c-planes: 2

Lux at center: 119 lx

*Lux distribution on a surface when lamp is mounted at 10 meters from the surface.*



Total lumen output:

2483 lm

Peak candela output:

5040 cd

Light quality:

CRI: 70,7

Color temperature:

8101 K

## PRODUCT NAME:

Mosaico FX100

## MEASURAMENT CONDITIONS:

Beam angle:

Optic 70° MFX100LWGVW

Target:

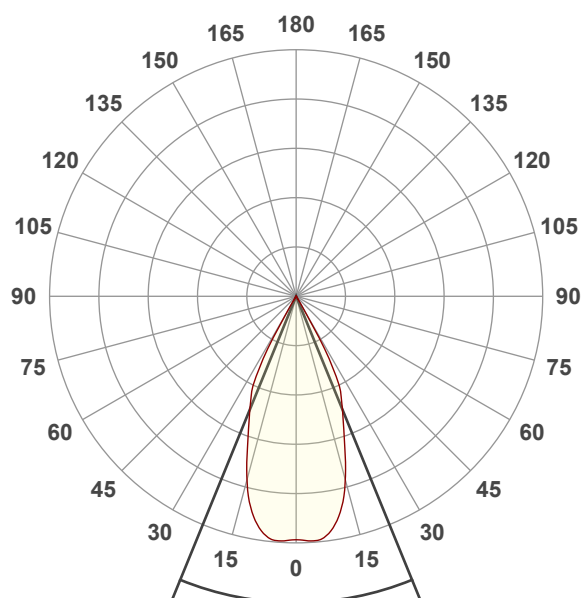
Full On

Operator:

Salvatore Giglio

Date and time:

30/08/2024 14:12:54

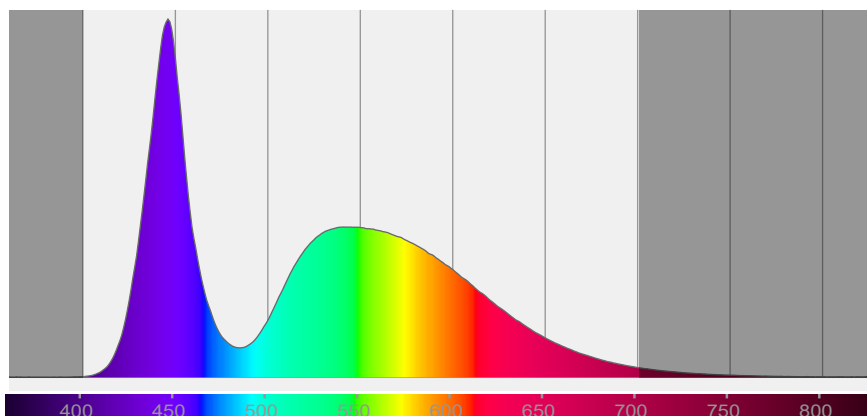


Beam angle 50%: 44,5°

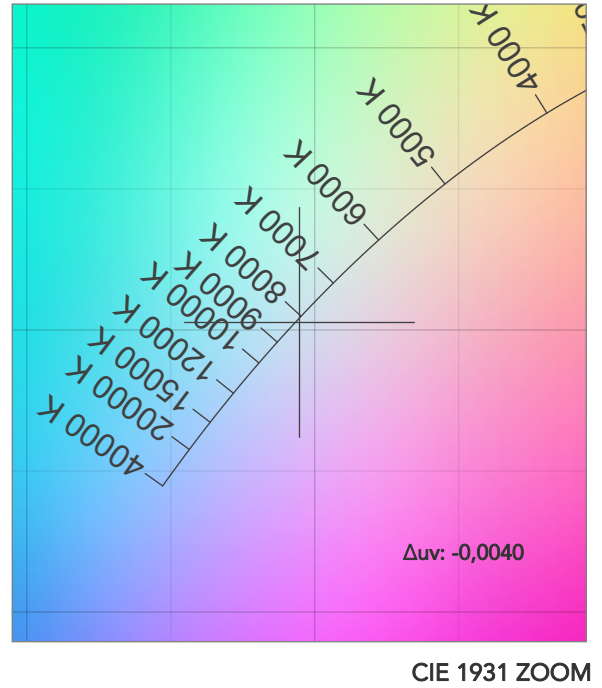
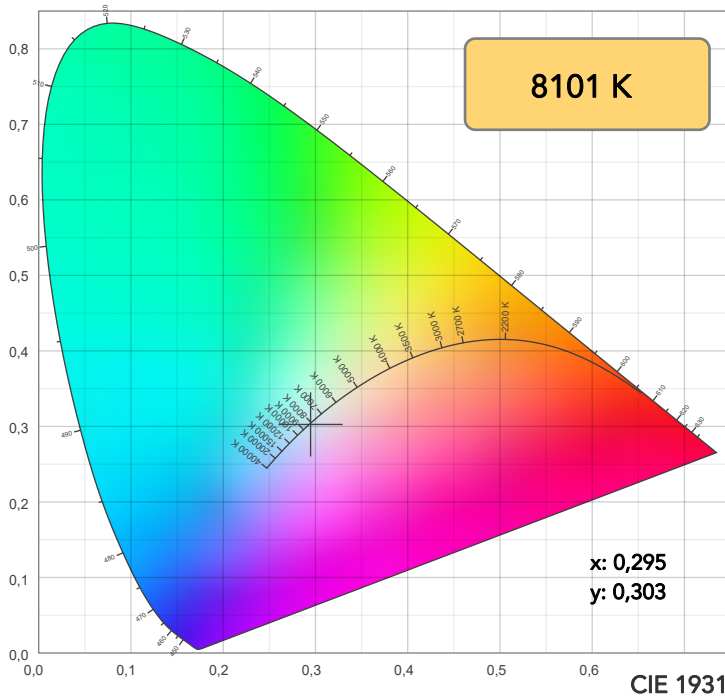
Field angle 10%: 60,5°

Cut off angle 2.5%: 64,3°

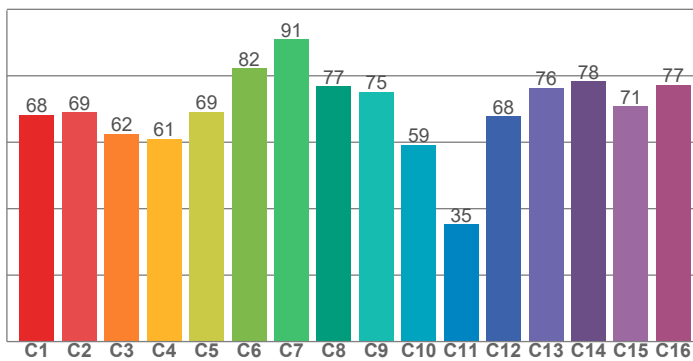
## Spectra



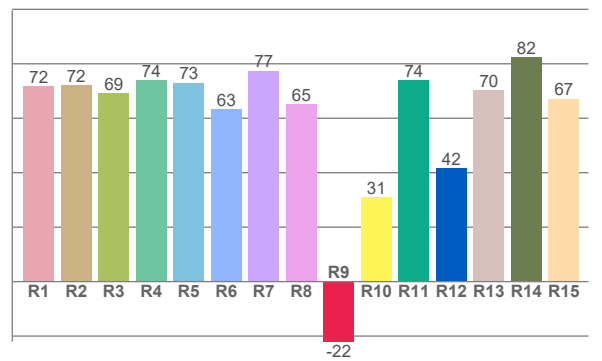
## COLOR DETAILS



TM30: 69,4



CRI: 70,7 (R1-R8)



CRI R values, only R1-R8 are used to calculate final CRI value

R1	R2	R3	R4	R5	R6	R7	R8	R9	R10	R11	R12	R13	R14	R15
71,7	72,0	69,1	74,0	73,0	63,2	77,4	65,1	-22,0	30,9	74,1	41,6	70,4	82,4	67,1

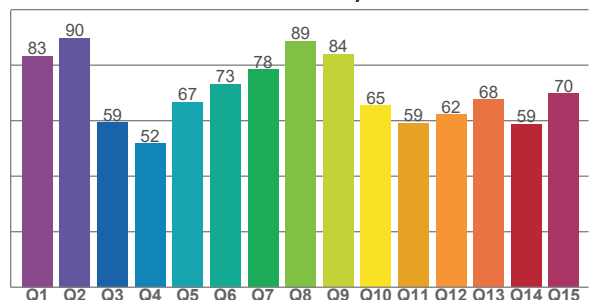
TM30 C values, 16 binned values out of total of 99 C values

C1	C2	C3	C4	C5	C6	C7	C8	C9	C10	C11	C12	C13	C14	C15	C16
68,3	69,0	62,5	60,9	69,2	82,2	90,9	76,8	75,1	59,2	35,3	67,7	76,4	78,3	70,8	77,2

CQS Q values

Q1	Q2	Q3	Q4	Q5	Q6	Q7	Q8	Q9	Q10	Q11	Q12	Q13	Q14	Q15
83,2	89,8	59,3	51,7	66,7	73,2	78,4	88,7	83,9	65,4	59,2	62,3	67,5	58,7	69,8

CQS: 68,4



## COLOR PARAMETERS

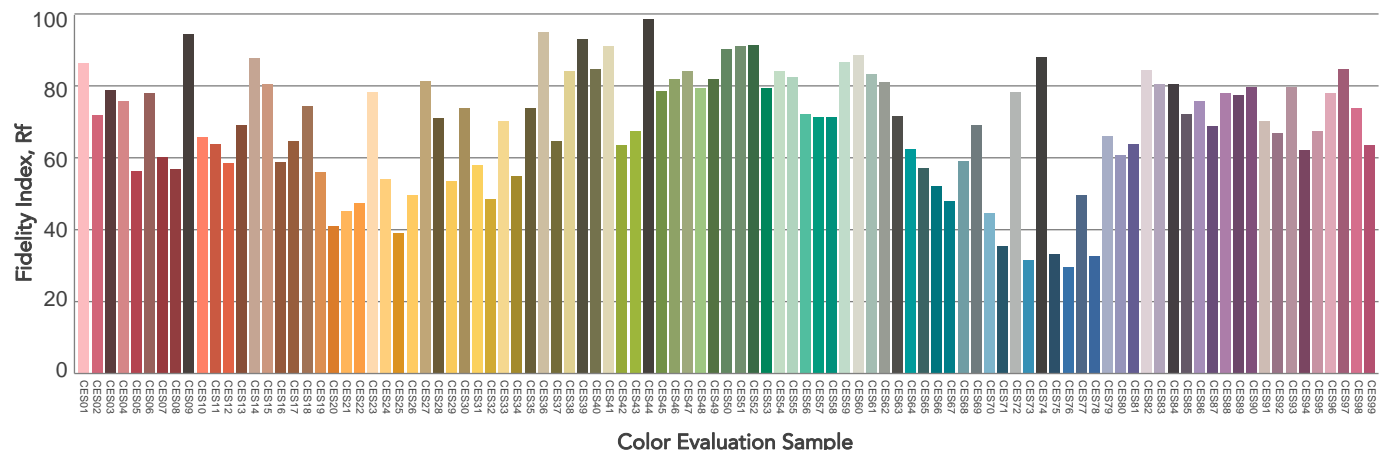
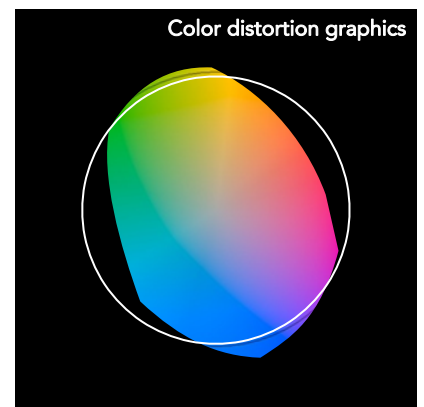
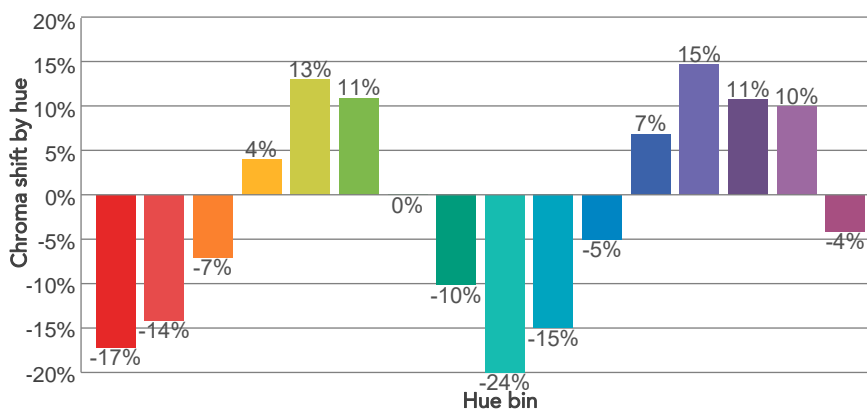
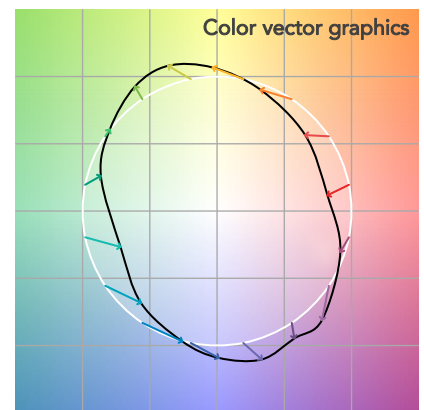
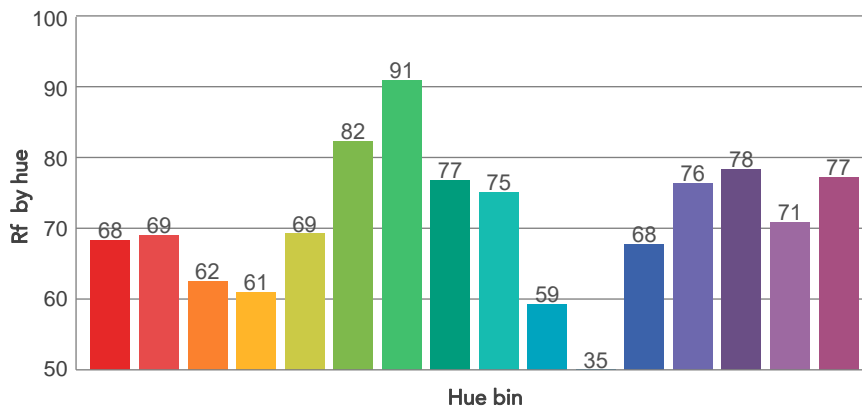
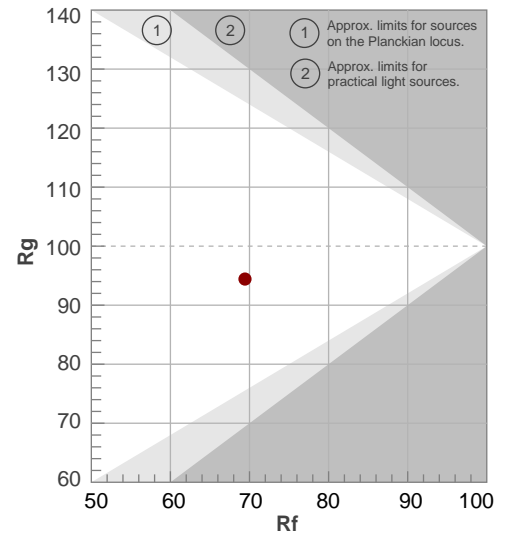
Color temperature	Color rendering index	Red component	Color fidelity	Color gamut	Color quality scale	Television lighting index	Color coordinate cie 1931	Color coordinate cie 1931	Color deviation from black body
CCT	CRI	CRI R9	TM30 Rf	TM30 Rg	CQS	TLCI	x	y	$\Delta uv$
8101 K	70,7	-22,0	69,4	94,4	68,4	45	0,295	0,303	-0,0040

# TM30 DETAILS

**Rf 69,4**  
Fidelity index Rf

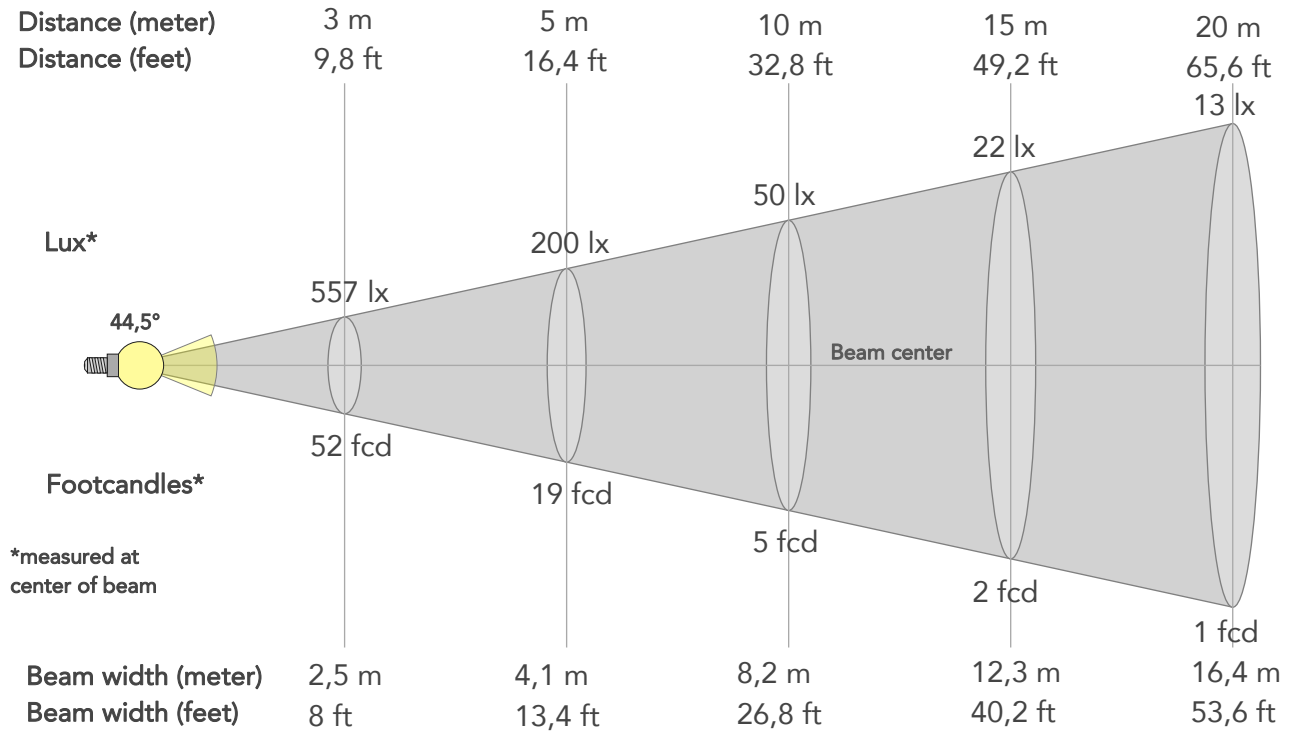
**Rg 94,4**  
Gammut index

		Graphic shifts (%)	
Hue Bin	R <sub>f</sub>	Chroma	Hue
1	68	-17%	-5%
2	69	-14%	11%
3	62	-7%	23%
4	61	4%	24%
5	69	13%	15%
6	82	11%	-1%
7	91	0%	-6%
8	77	-10%	-9%
9	75	-24%	12%
10	59	-15%	25%
11	35	-5%	32%
12	68	7%	23%
13	76	15%	11%
14	78	11%	-5%
15	71	10%	-24%
16	77	-4%	-12%



# BEAM DETAILS

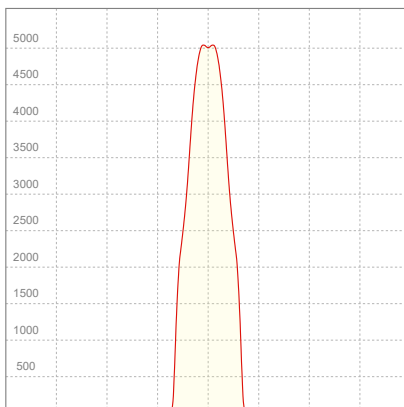
Beam angle 50%	Field angle 10%	Cut off angle 2,5%	Intensity ratio in 120° cone	Intensity ratio in 90° cone
44,5°	60,5°	64,3°	99,5%	99,3%



## BEAM INTENSITIES AND WIDTHS

Distance	1m	2m	3m	4m	5m	7,5m	10m	15m	20m	25m	30m	40m	50m
Distance	3,3ft	6,6ft	9,8ft	13,1ft	16,4ft	24,6ft	32,8ft	49,2ft	65,6ft	82ft	98,4ft	131,2ft	164ft
Lux	5011lx	1253lx	557lx	313lx	200lx	89lx	50lx	22lx	13lx	8lx	6lx	3lx	2lx
Footcand.	466fcd	116fcd	52fcd	29fcd	19fcd	8fcd	5fcd	2fcd	1fcd	1fcd	1fcd	0fcd	0fcd
Beam wid.	0,8m	1,6m	2,5m	3,3m	4,1m	6,1m	8,2m	12,3m	16,4m	20,4m	24,5m	32,7m	40,9m
Beam wid.	2,7ft	5,4ft	8ft	10,7ft	13,4ft	20,1ft	26,8ft	40,2ft	53,6ft	67ft	80,5ft	107,3ft	134,1ft

## LINEAR DISTRIBUTION DIAGRAM

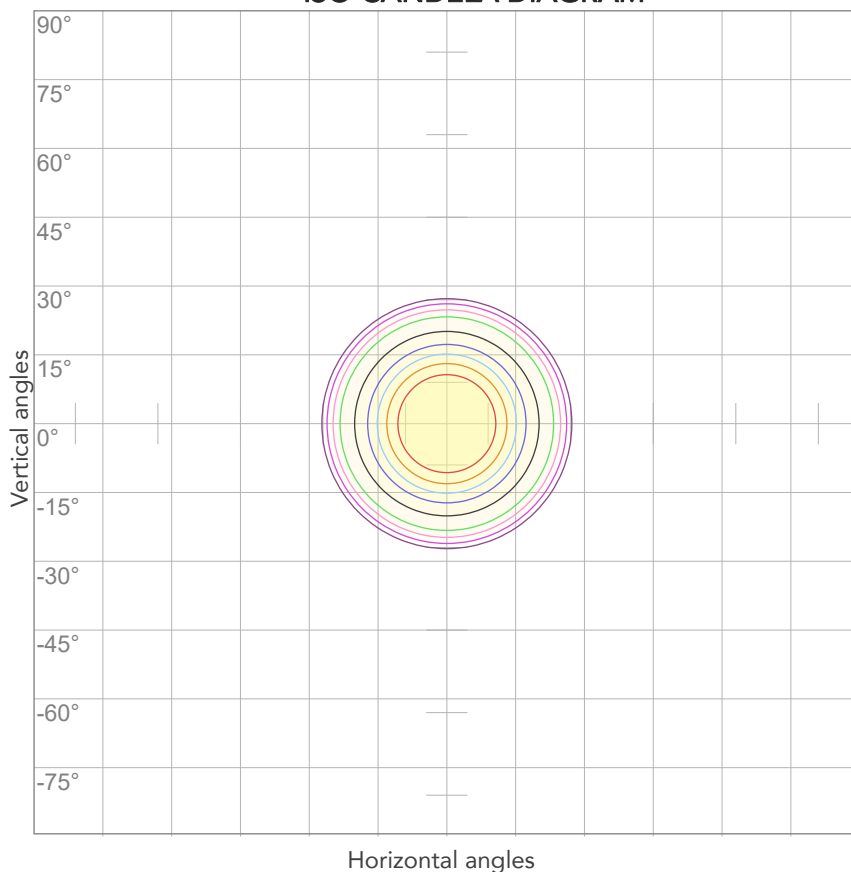


## ELECTRICAL SPECIFICATIONS

Input voltage	Input current	Input power	Power FC	Efficiency
224V	0,535A	114,9W	0,96	22lm/W

# ISO DIAGRAMS

## ISO CANDELA DIAGRAM



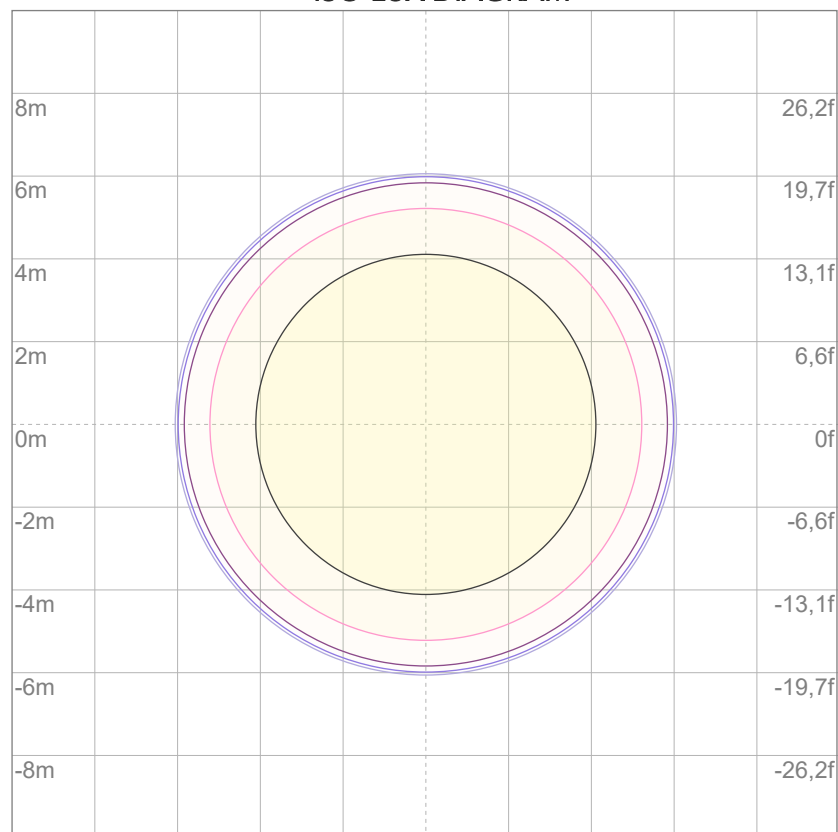
10%	501 cd
20%	1002 cd
30%	1503 cd
40%	2004 cd
50%	2506 cd
60%	3007 cd
70%	3508 cd
80%	4009 cd

### Conditions:

Number of c-planes: 2

Candela at center: 5011 cd

## ISO LUX DIAGRAM



3%	1,50 lx
5%	2,51 lx
10%	5,01 lx
30%	15,0 lx
50%	25,1 lx

### Conditions:

Number of c-planes: 2

Lux at center: 50,1 lx

*Lux distribution on a surface when lamp is mounted at 10 meters from the surface.*



Total lumen output:

3067 lm

Peak candela output:

10979 cd

Light quality:

CRI: 70,4

Color temperature:

8301 K

## PRODUCT NAME:

Mosaico FX100

## MEASURAMENT CONDITIONS:

Beam angle:

Optic 30° MFX100LGBM

Target:

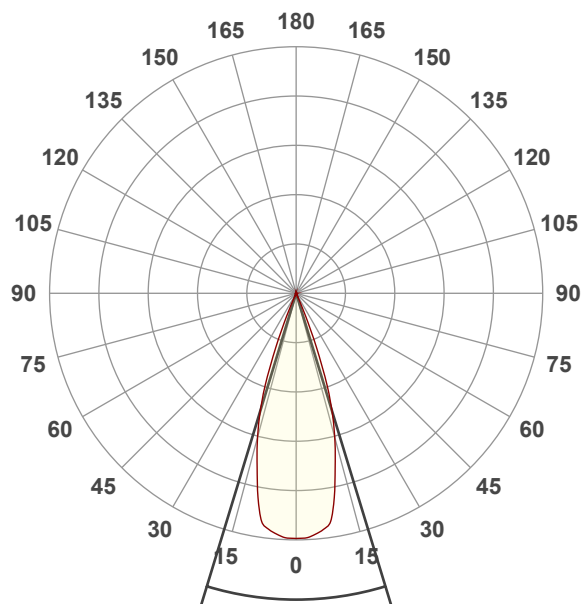
Full On

Operator:

Salvatore Giglio

Date and time:

30/08/2024 14:00:41

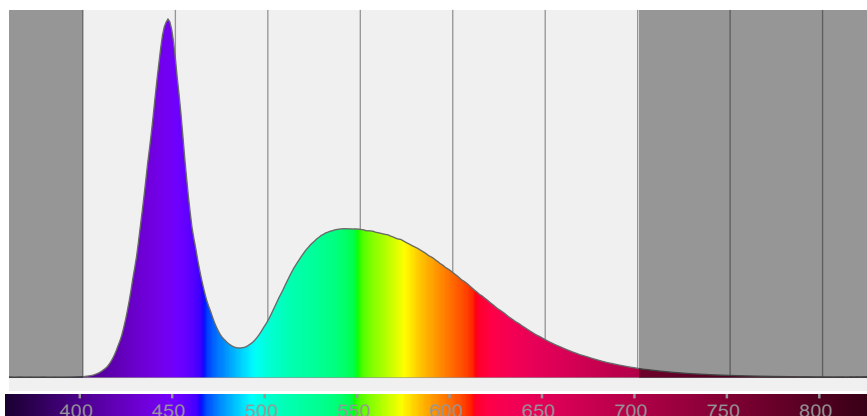


Beam angle 50%: 33,9°

Field angle 10%: 45,3°

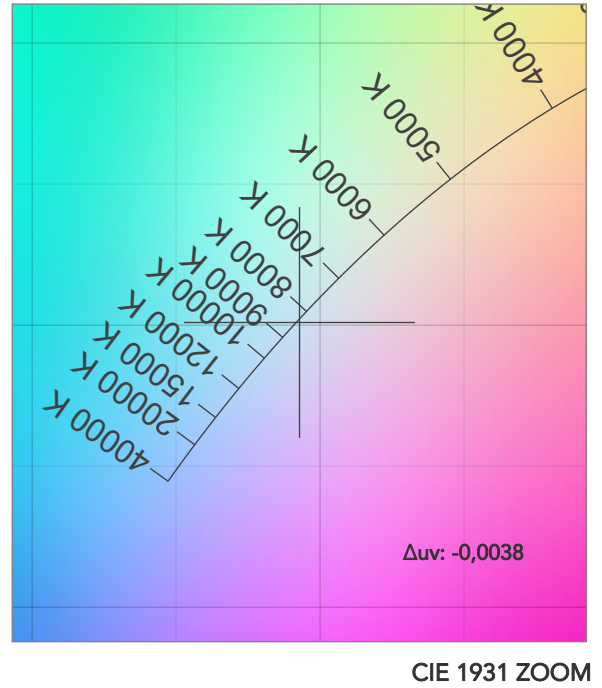
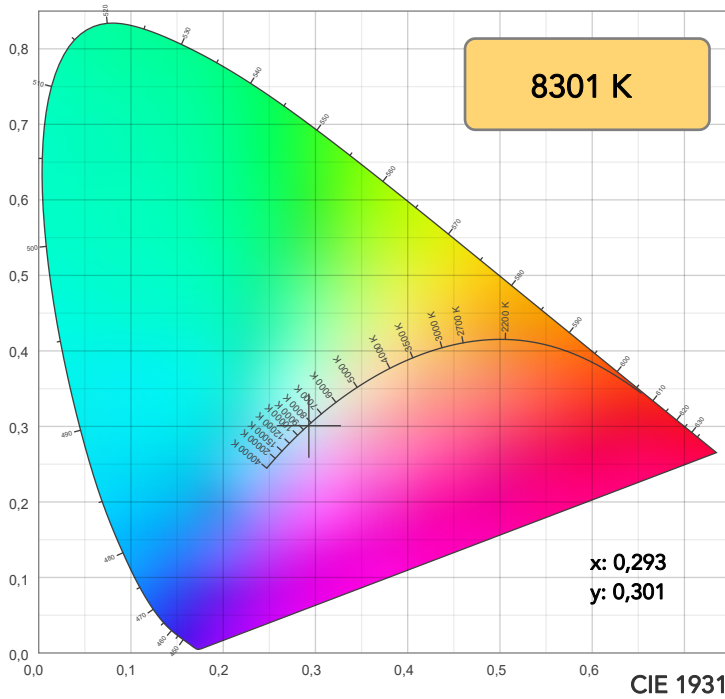
Cut off angle 2.5%: 48,7°

## Spectra



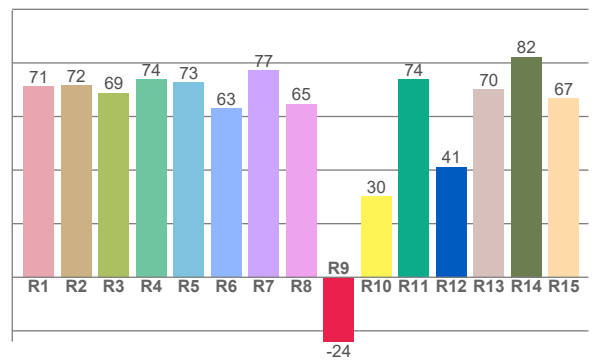
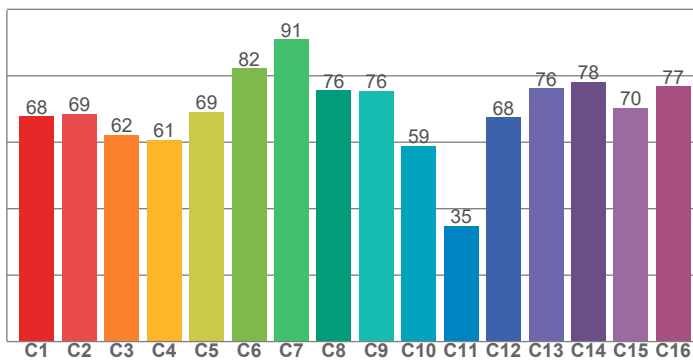


## COLOR DETAILS



TM30: 69,2

CRI: 70,4 (R1-R8)



CRI R values, only R1-R8 are used to calculate final CRI value

R1	R2	R3	R4	R5	R6	R7	R8	R9	R10	R11	R12	R13	R14	R15
71,3	71,7	68,8	73,7	72,8	62,9	77,3	64,7	-24,0	30,1	73,7	41,2	70,0	82,3	66,7

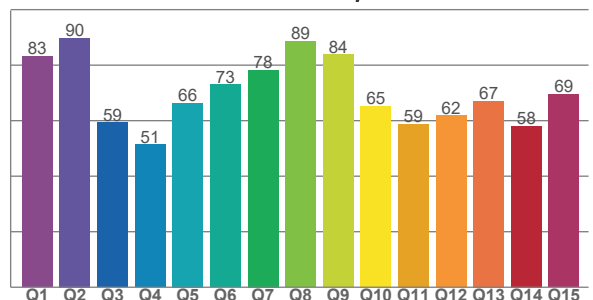
TM30 C values, 16 binned values out of total of 99 C values

C1	C2	C3	C4	C5	C6	C7	C8	C9	C10	C11	C12	C13	C14	C15	C16
67,7	68,6	62,2	60,8	69,2	82,3	90,9	75,6	75,5	58,9	34,8	67,5	76,2	78,1	70,4	76,8

CQS Q values

Q1	Q2	Q3	Q4	Q5	Q6	Q7	Q8	Q9	Q10	Q11	Q12	Q13	Q14	Q15
83,2	89,8	59,4	51,3	66,4	73,0	78,3	88,6	83,9	65,2	58,8	61,9	67,1	58,1	69,5

CQS: 68,1



## COLOR PARAMETERS

Color temperature	Color rendering index	Red component	Color fidelity	Color gamut	Color quality scale	Television lighting index	Color coordinate cie 1931	Color coordinate cie 1931	Color deviation from black body
CCT	CRI	CRI R9	TM30 Rf	TM30 Rg	CQS	TLCI	x	y	Δuv
8301 K	70,4	-24,0	69,2	94,2	68,1	45	0,293	0,301	-0,0038

## TM30 DETAILS

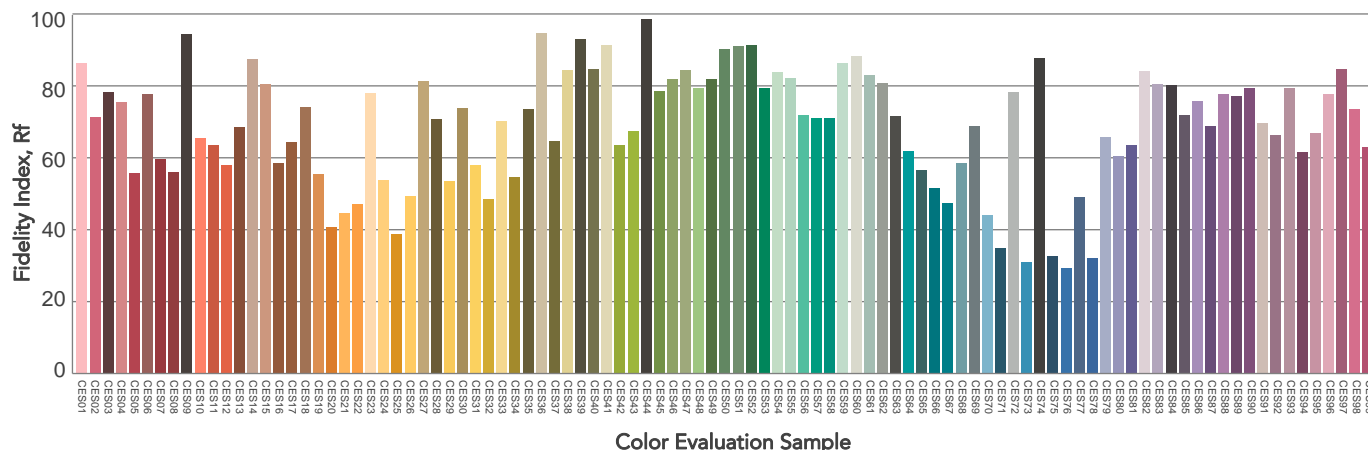
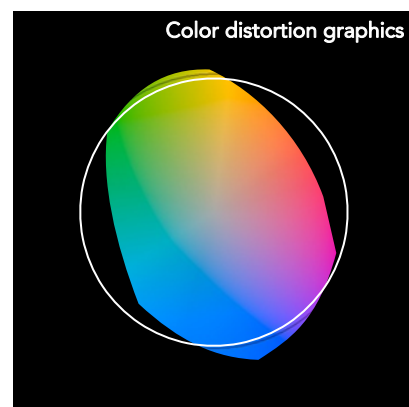
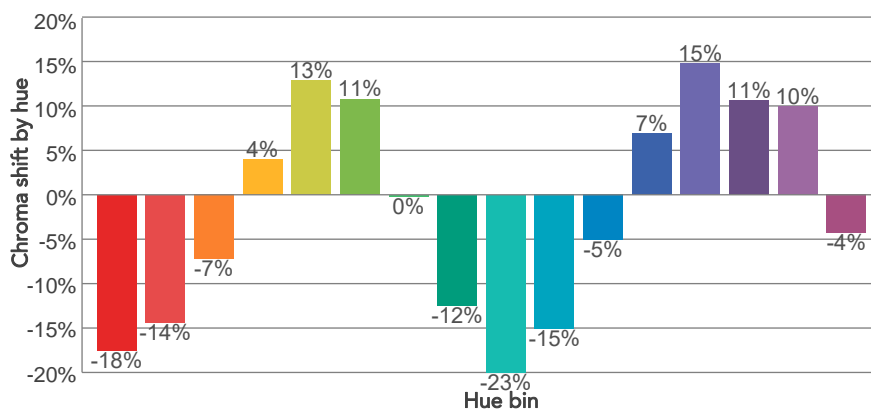
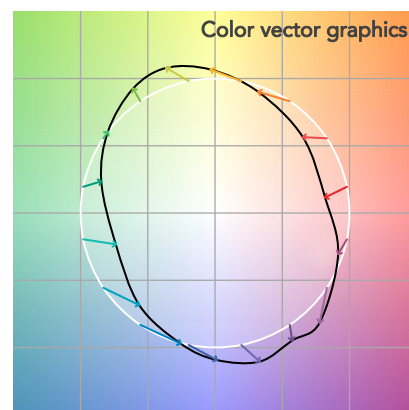
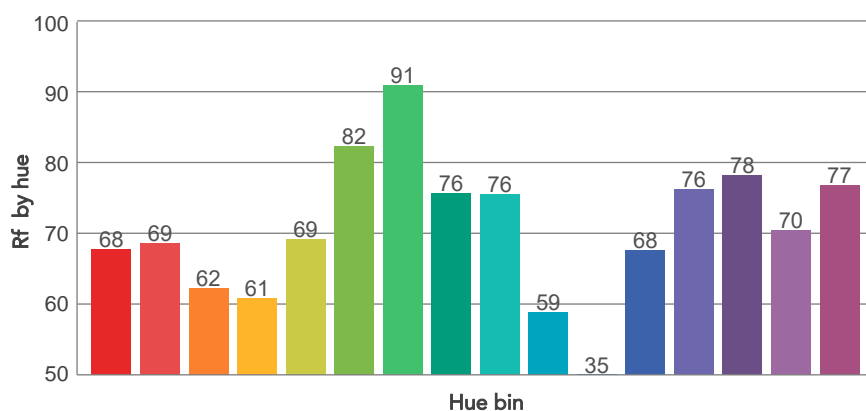
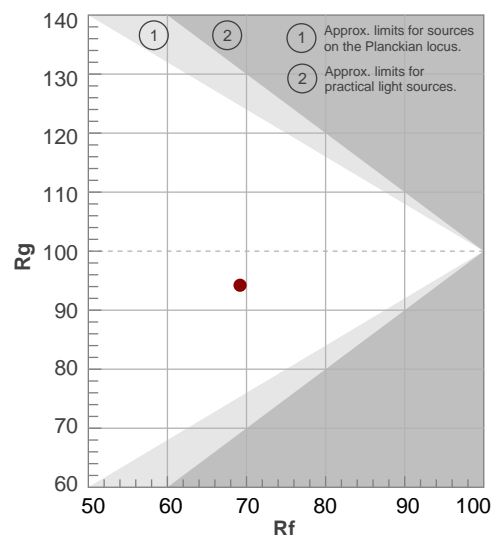
**Rf 69,2**

Fidelity index Rf

**Rg 94,2**

Gammut index

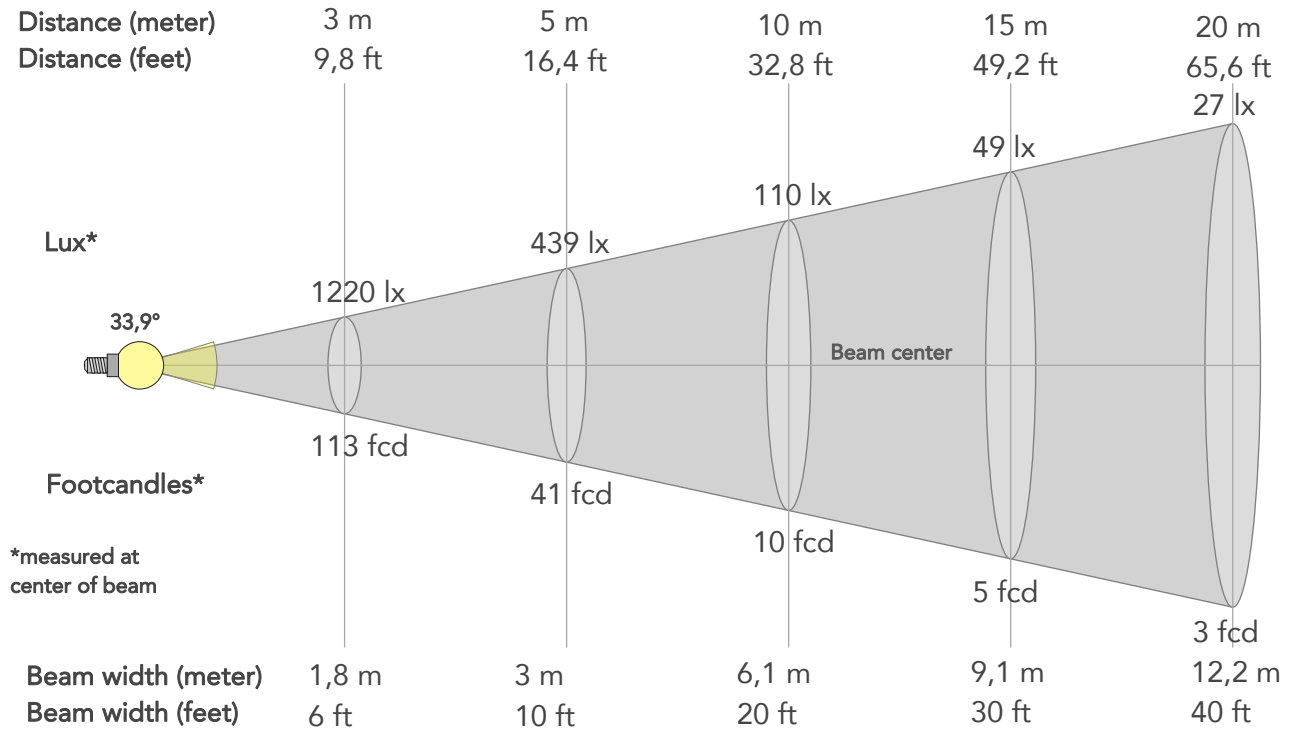
Hue Bin	R <sub>f</sub>	Graphic shifts (%)	
		Chroma	Hue
1	68	-18%	-5%
2	69	-14%	11%
3	62	-7%	23%
4	61	4%	24%
5	69	13%	15%
6	82	11%	-1%
7	91	0%	-6%
8	76	-12%	-7%
9	76	-23%	8%
10	59	-15%	26%
11	35	-5%	33%
12	68	7%	23%
13	76	15%	11%
14	78	11%	-5%
15	70	10%	-24%
16	77	-4%	-12%



# BEAM DETAILS



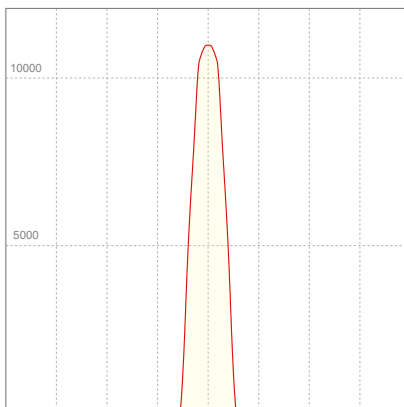
Beam angle 50%	Field angle 10%	Cut off angle 2,5%	Intensity ratio in 120° cone	Intensity ratio in 90° cone
33,9°	45,3°	48,7°	99,5%	99,4%



## BEAM INTENSITIES AND WIDTHS

Distance	1m	2m	3m	4m	5m	7,5m	10m	15m	20m	25m	30m	40m	50m
Distance	3,3ft	6,6ft	9,8ft	13,1ft	16,4ft	24,6ft	32,8ft	49,2ft	65,6ft	82ft	98,4ft	131,2ft	164ft
Lux	10979lx	2745lx	1220lx	686lx	439lx	195lx	110lx	49lx	27lx	18lx	12lx	7lx	4lx
Footcand.	1020fcd	255fcd	113fcd	64fcd	41fcd	18fcd	10fcd	5fcd	3fcd	2fcd	1fcd	1fcd	0fcd
Beam wid.	0,6m	1,2m	1,8m	2,4m	3m	4,6m	6,1m	9,1m	12,2m	15,2m	18,3m	24,4m	30,5m
Beam wid.	2ft	4ft	6ft	8ft	10ft	15ft	20ft	30ft	40ft	50ft	60ft	80ft	100ft

## LINEAR DISTRIBUTION DIAGRAM

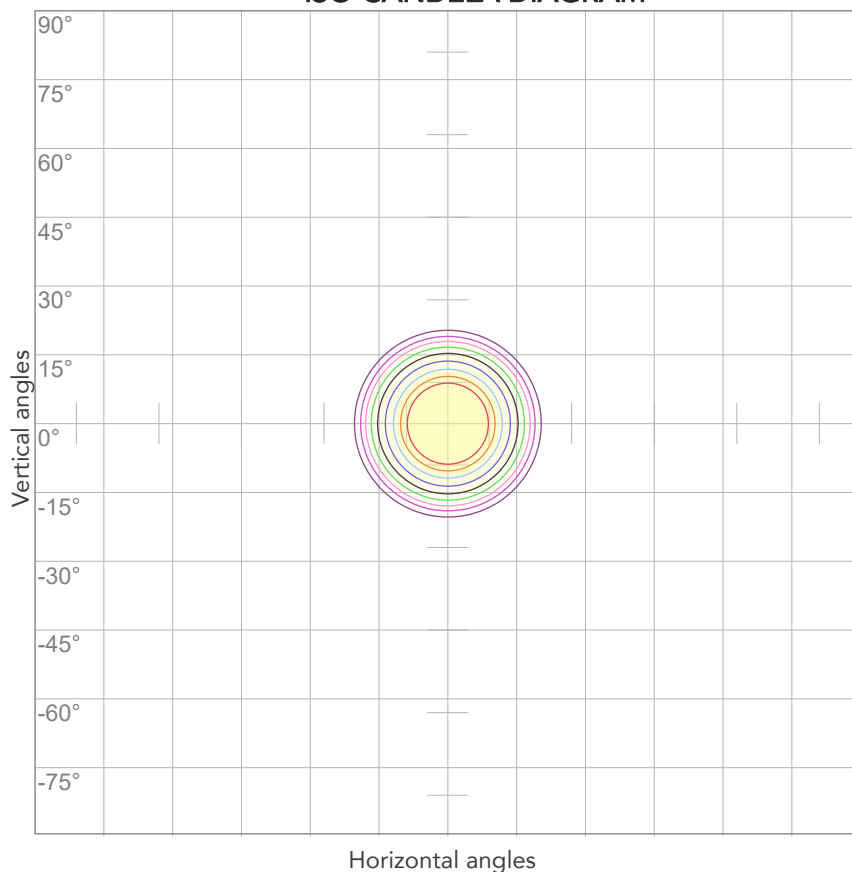


## ELECTRICAL SPECIFICATIONS

Input voltage	Input current	Input power	Power FC	Efficiency
224V	0,534A	114,9W	0,96	27lm/W

# ISO DIAGRAMS

## ISO CANDELA DIAGRAM



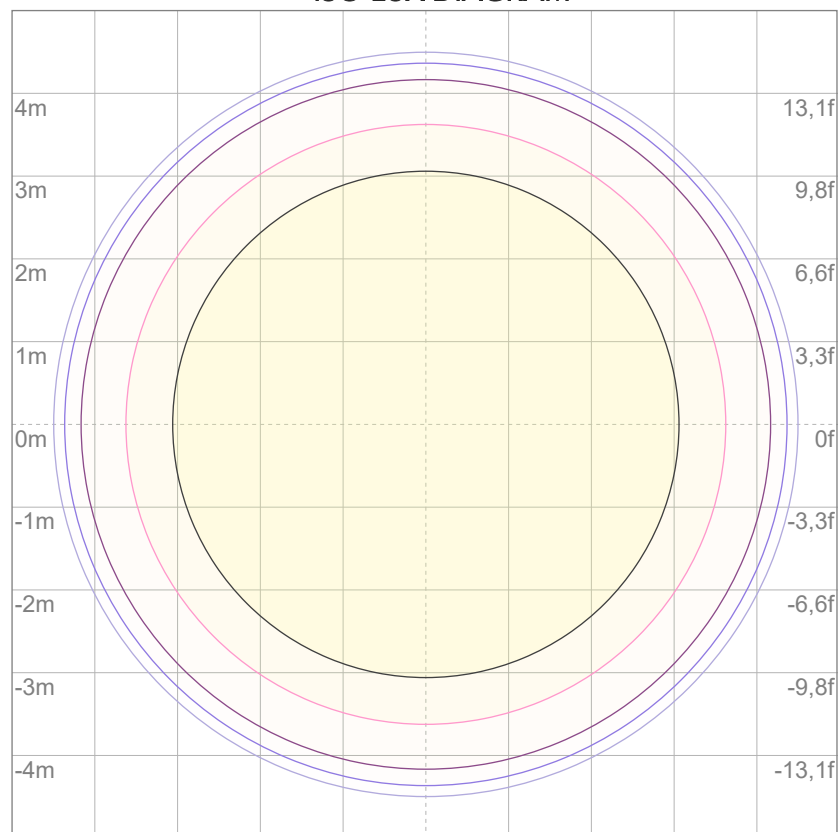
10%	1098 cd
20%	2196 cd
30%	3294 cd
40%	4391 cd
50%	5489 cd
60%	6587 cd
70%	7685 cd
80%	8783 cd

### Conditions:

Number of c-planes: 2

Candela at center: 10979 cd

## ISO LUX DIAGRAM



3%	3,29 lx
5%	5,49 lx
10%	11,0 lx
30%	32,9 lx
50%	54,9 lx

### Conditions:

Number of c-planes: 2

Lux at center: 110 lx

*Lux distribution on a surface when lamp is mounted at 10 meters from the surface.*



Total lumen output:

2354 lm

Peak candela output:

4895 cd

Light quality:

CRI: 71,1

Color temperature:

8188 K

## PRODUCT NAME:

Mosaico FX100

## MEASUREMENT CONDITIONS:

Beam angle:

Optic 50° MFX100LGBW

Target:

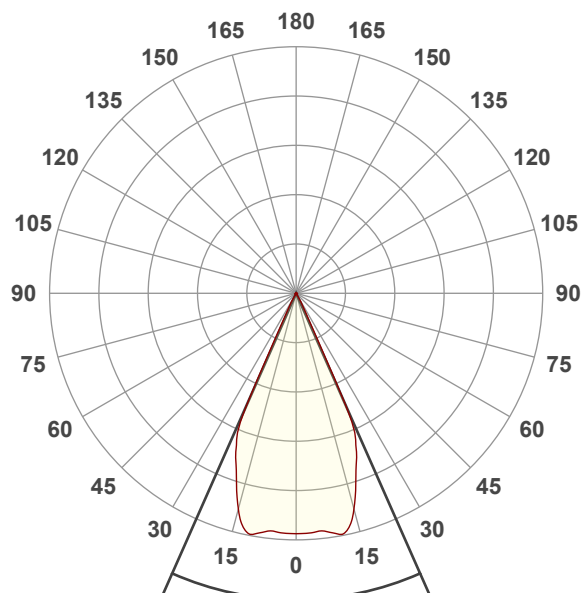
Full On

Operator:

Salvatore Giglio

Date and time:

30/08/2024 14:19:48

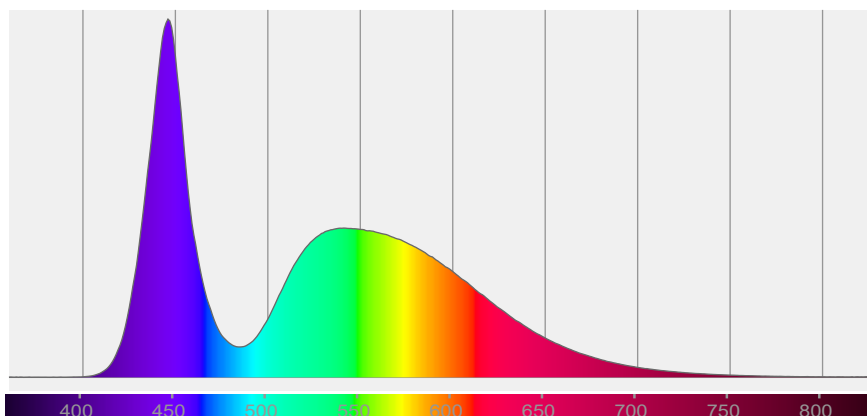


Beam angle 50%: 47,7°

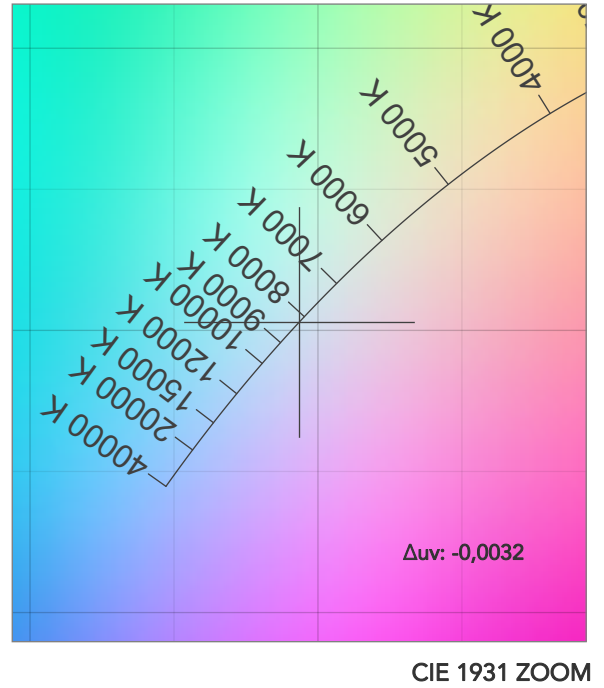
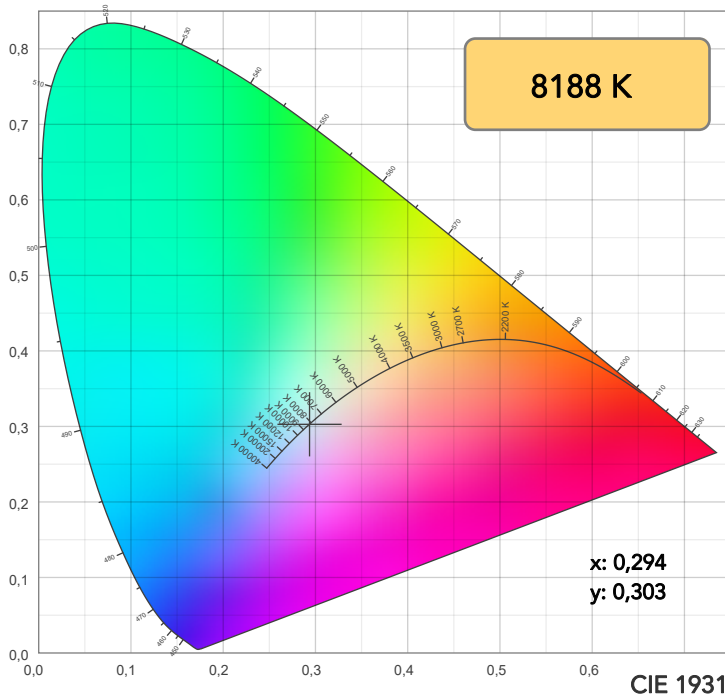
Field angle 10%: 52,2°

Cut off angle 2.5%: 56,1°

## Spectra

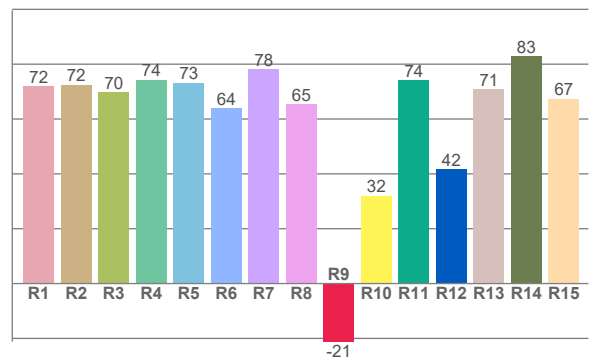
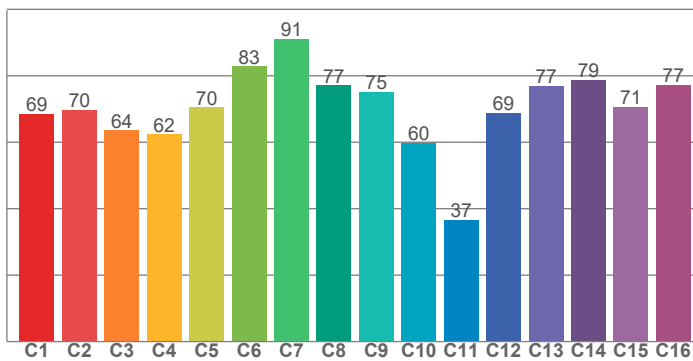


# COLOR DETAILS



TM30: 70,1

CRI: 71,1 (R1-R8)



CRI R values, only R1-R8 are used to calculate final CRI value

R1	R2	R3	R4	R5	R6	R7	R8	R9	R10	R11	R12	R13	R14	R15
71,9	72,5	69,8	74,3	73,3	63,8	78,1	65,5	-21,2	32,0	74,2	41,7	70,8	82,9	67,3

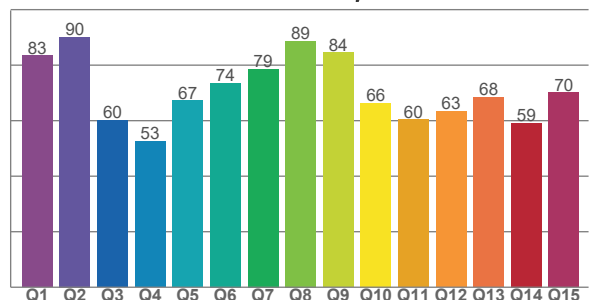
TM30 C values, 16 binned values out of total of 99 C values

C1	C2	C3	C4	C5	C6	C7	C8	C9	C10	C11	C12	C13	C14	C15	C16
68,5	69,7	63,6	62,3	70,5	82,9	91,1	77,1	75,2	59,9	36,6	68,8	77,0	78,8	70,7	77,3

CQS Q values

Q1	Q2	Q3	Q4	Q5	Q6	Q7	Q8	Q9	Q10	Q11	Q12	Q13	Q14	Q15
83,5	90,2	60,2	52,6	67,2	73,6	78,7	88,7	84,5	66,3	60,3	63,4	68,4	59,2	70,2

CQS: 69,0



## COLOR PARAMETERS

Color temperature	Color rendering index	Red component	Color fidelity	Color gamut	Color quality scale	Television lighting index	Color coordinate cie 1931	Color coordinate cie 1931	Color deviation from black body
CCT	CRI	CRI R9	TM30 Rf	TM30 Rg	CQS	TLCI	x	y	Δuv
8188 K	71,1	-21,2	70,1	94,3	69,0	47	0,294	0,303	-0,0032

## TM30 DETAILS

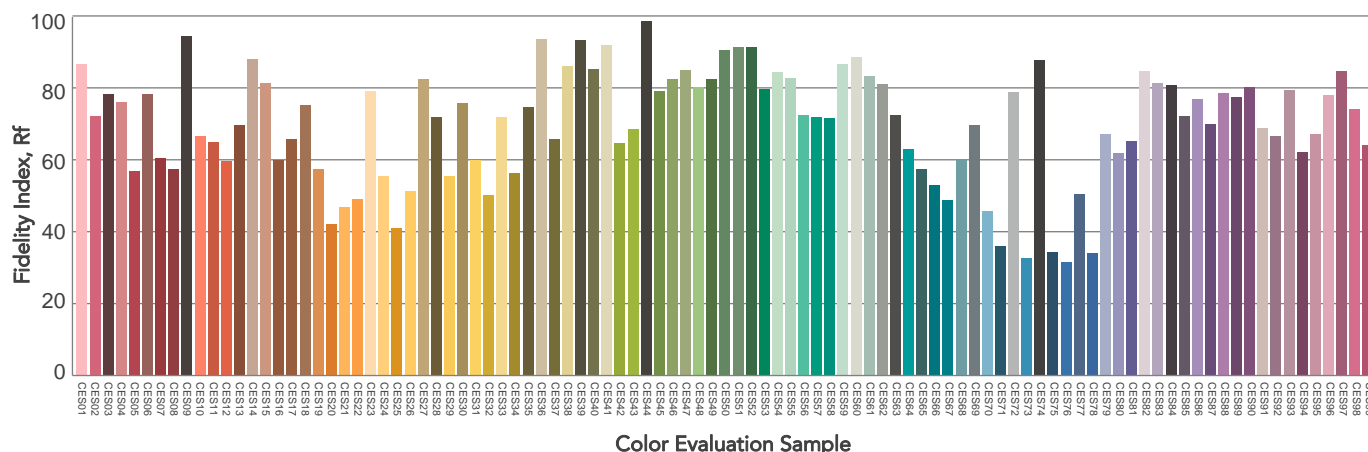
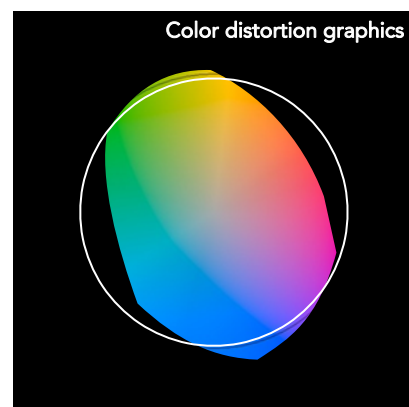
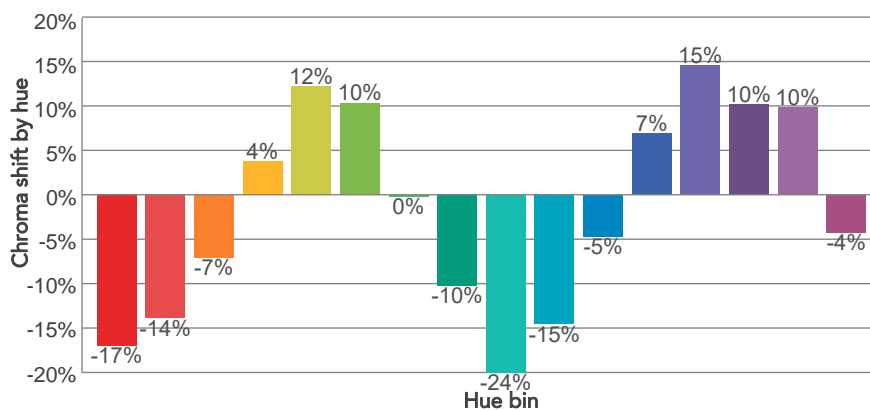
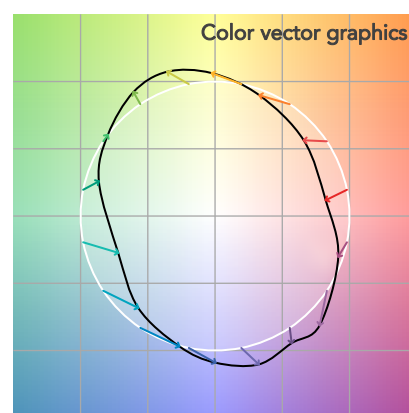
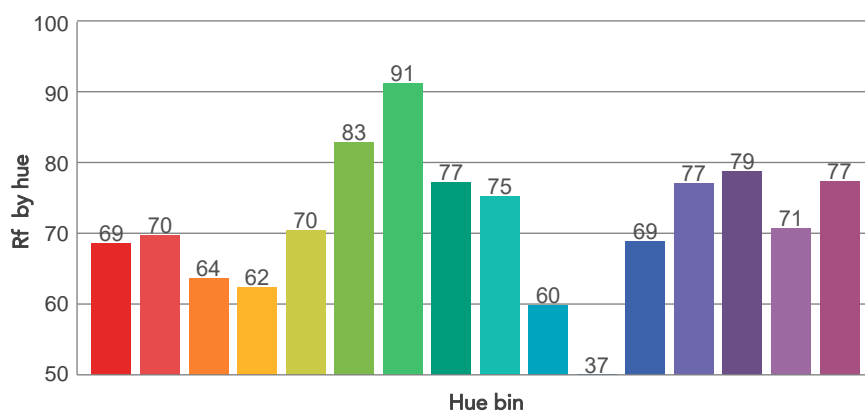
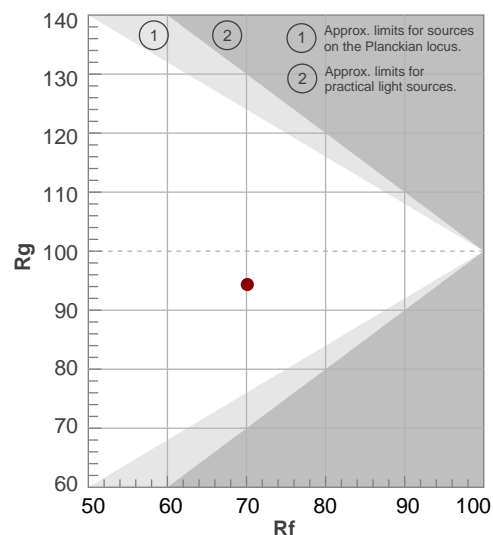
**Rf 70,1**

Fidelity index Rf

**Rg 94,3**

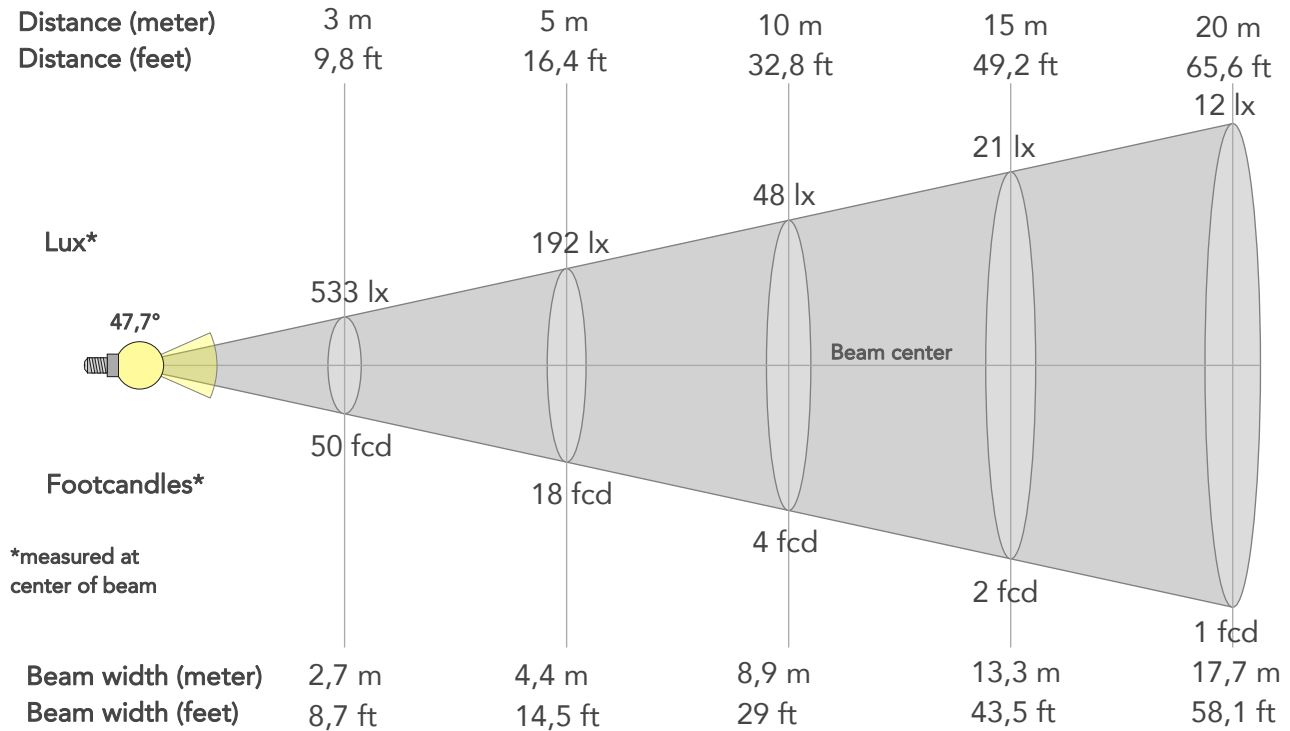
Gammut index

Hue Bin	R <sub>f</sub>	Graphic shifts (%)	
		Chroma	Hue
1	69	-17%	-5%
2	70	-14%	10%
3	64	-7%	22%
4	62	4%	23%
5	70	12%	14%
6	83	10%	-1%
7	91	0%	-6%
8	77	-10%	-8%
9	75	-24%	13%
10	60	-15%	25%
11	37	-5%	32%
12	69	7%	22%
13	77	15%	10%
14	79	10%	-5%
15	71	10%	-24%
16	77	-4%	-12%



# BEAM DETAILS

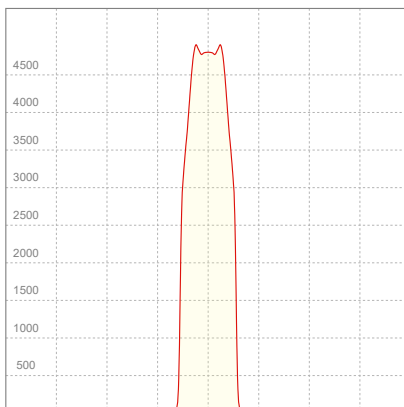
Beam angle 50%	Field angle 10%	Cut off angle 2,5%	Intensity ratio in 120° cone	Intensity ratio in 90° cone
47,7°	52,2°	56,1°	99,7%	99,6%



## BEAM INTENSITIES AND WIDTHS

Distance	1m	2m	3m	4m	5m	7,5m	10m	15m	20m	25m	30m	40m	50m
Distance	3,3ft	6,6ft	9,8ft	13,1ft	16,4ft	24,6ft	32,8ft	49,2ft	65,6ft	82ft	98,4ft	131,2ft	164ft
Lux	4800lx	1200lx	533lx	300lx	192lx	85lx	48lx	21lx	12lx	8lx	5lx	3lx	2lx
Footcand.	446fcd	111fcd	50fcd	28fcd	18fcd	8fcd	4fcd	2fcd	1fcd	1fcd	0fcd	0fcd	0fcd
Beam wid.	0,9m	1,8m	2,7m	3,5m	4,4m	6,6m	8,9m	13,3m	17,7m	22,1m	26,6m	35,4m	44,3m
Beam wid.	2,9ft	5,8ft	8,7ft	11,6ft	14,5ft	21,8ft	29ft	43,5ft	58,1ft	72,6ft	87,1ft	116,1ft	145,1ft

## LINEAR DISTRIBUTION DIAGRAM



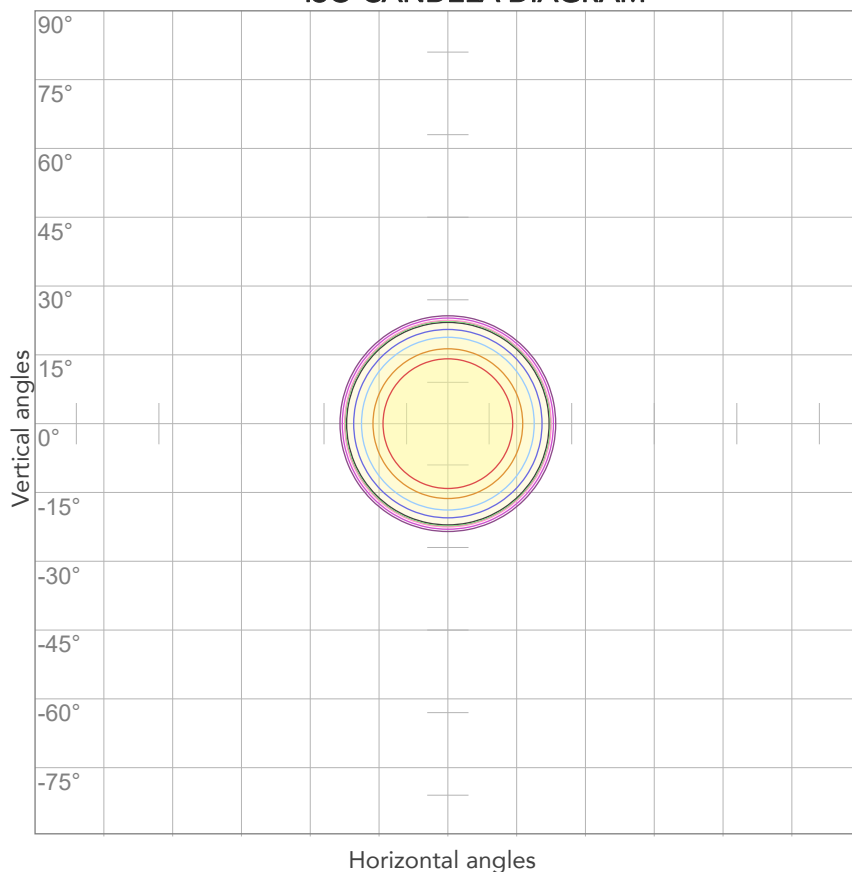
## ELECTRICAL SPECIFICATIONS

Input voltage	Input current	Input power	Power FC	Efficiency
225V	0,535A	115,2W	0,96	20lm/W



# ISO DIAGRAMS

## ISO CANDELA DIAGRAM



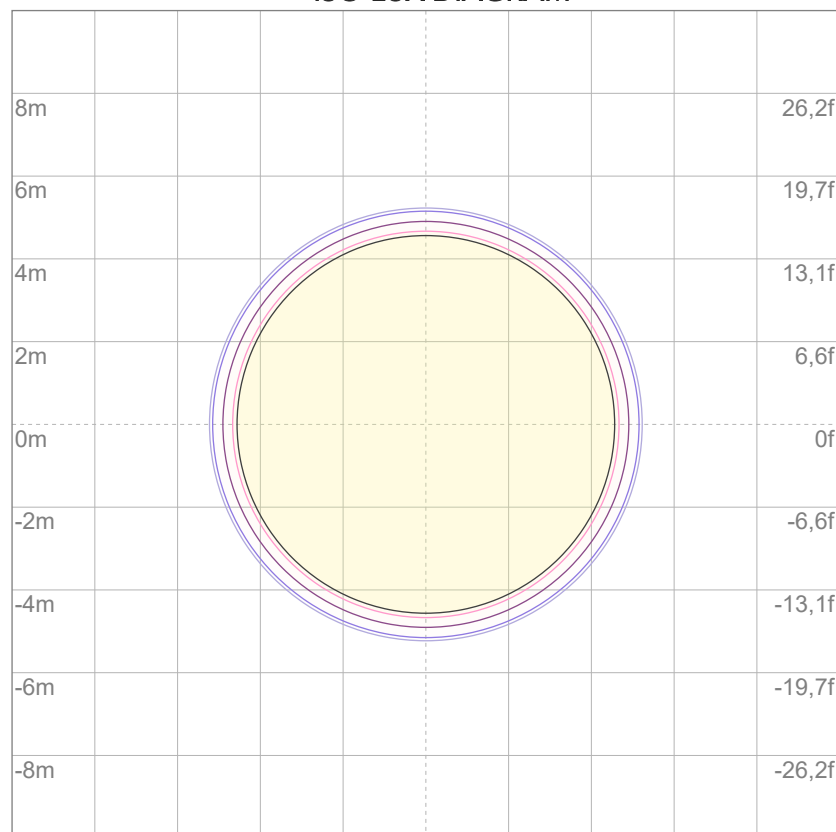
10%	480 cd
20%	960 cd
30%	1440 cd
40%	1920 cd
50%	2400 cd
60%	2880 cd
70%	3360 cd
80%	3840 cd

### Conditions:

Number of c-planes: 2

Candela at center: 4800 cd

## ISO LUX DIAGRAM



3%	1,44 lx
5%	2,40 lx
10%	4,80 lx
30%	14,4 lx
50%	24,0 lx

### Conditions:

Number of c-planes: 2

Lux at center: 48,0 lx

*Lux distribution on a surface when lamp is mounted at 10 meters from the surface.*