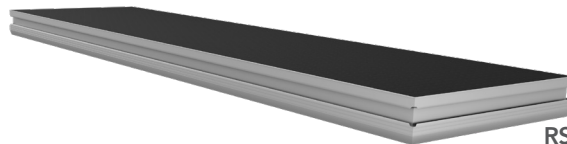
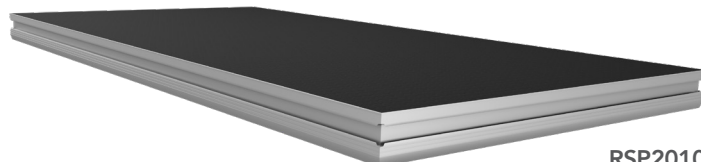




RSP1010



RSP2005



RSP2010

Deck panel in Plywood for modular stage system ROADSTAGE series, fire-proof and anti-skid, suitable for indoor and outdoor applications.

MAIN FEATURES

- Available in 2x1 m, 1x1 m, 2x0,5 m
- Resistant to weathering agents
- Panel frame made of aluminium
- Load capacity 500 kg/sqm
- Legs not included

ACCESSORIES

▪ RSSL	Set leg in aluminium for ROADSTAGE system
▪ RSTL	Telescopic leg in aluminium for ROADSTAGE system
▪ RSSW040	Wheel leg in aluminium for ROADSTAGE system, h.40 cm
▪ RSSA	Self-levelling stairs, for ROADSTAGE system
▪ RSSF	Step for ROADSTAGE system
▪ RSH200	Aluminum handrail for ROADSTAGE system, dimensions: 200x120cm
▪ RSH100	Aluminum handrail for ROADSTAGE system, dimensions: 100x120cm
▪ RSPT2010	Stage trolley for ROADSTAGE system, dimensions 208x102 cm
▪ RSA101	Stage deck clamp for ROADSTAGE system

VERSIONS

Code	Carply Panel	Weight	Load capacity
RSP1010	200x100x9 cm	18,1 kg	500 kg/m ²
RSP2005	200x50x9 cm	18,8 kg	500 kg/m ²
RSP2010	100x100x9 cm	31,1 kg	500 kg/m ²

▪ RSA102	Handrail assembly clamp for ROADSTAGE system, compatible with RSH
▪ RSA103	Self leveling insert for ROADSTAGE system
▪ RSA104	Assembly insert for RSS ROADSTAGE system
▪ RSA105	Stage leg clamp for ROADSTAGE system
▪ RSA109	Double stage leg clamp for ROADSTAGE system
▪ RSA118	Handrail clamp for ROADSTAGE system
▪ RSA124	Stage deck side clamp for ROADSTAGE and LITESTAGE system
▪ RSASPL100	Skirting Profile for Stage deck, L.975mm
▪ RSASPL200	Skirting Profile for Stage deck, L.1975mm