

ArcShine M18VW

18x4W IP66 Variable White architectural linear bar, 100 cm

ORDER CODE: **ARCSHINEM1808VW**



The **ArcShine M18VW** and **ArcShine M9VW** are a series of linear LED fixtures, designed for interior and exterior applications (IP66) such as flood lighting, wall washing and accent lighting. There are two sizes available, one with 18 LEDs (100 cm) and the other with 9 (50 cm) LED emitters, 4W each, with Variable White colour mixing. Its die-cast aluminium body with tempered glass make them perfect additions to urban structures or historical buildings. Optic: 8° lenses capable of delivering multiple angles with optional holographic filters. Optional holographic symmetric and elliptical filters available: 20°, 40°, 60°, 10°x60°, 30°x60°. The **ArcShine** range has an on-board power supply and DMX/RDM control. The 100 cm version is controllable in two sections.

MAIN FEATURES

- IP66 design, AC 100-240V and driver on-board, DMX/RDM controllable
- Variable White colour mixing, with 4W LED emitters
- Optic: 8° lenses capable of delivering multiple angles with optional holographic filters
- Optional holographic symmetric and elliptical filters available: 20°, 40°, 60°, 10°x60°. 30°x60°

TECHNICAL SPECIFICATION

LIGHT SOURCE

- Source: 18x4 W Variable White LED
- CCT: 2.800 K - 6.500
- Luminous flux: (8°) 3'728 lm; (8°+20°) 3'728 lm; (8°+40°) 3'649 lm; (8°+60°) 3'627 lm; (8°+1060°) 5'401 lm; (8°+3060°) 3'942 @full
- Luminous flux:
- Lux: (8°) 1'553 lx; (8°+20°) 378 lx; (8°+40°) 154 lx; (8°+60°) 118 lx; (8°+1060°) 279 lx; (8°+3060°) 154 lx @3 m
- CRI: >85
- Source life expectancy: > 50.000 hrs (L70B10 @Ta 25° C / 77° F)

OPTICS

- Beam angle: 8°
- Additional optics: see available accessories

COLOUR SYSTEM

- Colour mixing: Variable White
- CCT: CCT control through dedicated DMX channel
- Macros: built-in white presets

BODY

- Tilt angle: manual 180°
- Body: sturdy aluminum profile
- Body colour: RAL 7012

CONTROL

- Protocols: DMX512, RDM
- Stand Alone: available through DATAMASTER external coder (not included)
- DMX channels: 1 / 2 / 5 / 9 channel
- Pixel control: 2 controllable sections
- RDM: RDM for remote monitoring and settings
- Display: user interface through DATAMASTER external coder (not included)
- Firmware upgrade: yes, via USB - DMX interface (UPBOXPRO/UPBOX1) not included
- Master/Slave: for synchronised operation of more units linked in a chain
- Other: 16bit control of dimmer and colour

ELECTRONICS

- Dimmer: linear 0 ~ 100% electronic dimmer
- Dimmer curves: 4 selectable dimming modes available
- Strobe / shutter: 1-30 Hz, electronic
- Operating temperature: -20° C / +45° C (-4° F / +113° F)
- Selectable PWM: 600 ~ 25.000 Hz

ELECTRICAL

- Mains power supply: 100-240V - 50/60Hz
- Max power consumption: 80 W
- Output (at 230V): 15 units on a single power line
- Power factor: >0,94
- Inrush current: 110VAC/12.85A, 230VAC/20.3A

PHYSICAL

- IP rating: 66 for outdoor installations
- IK rating: 09
- Cooling: passive cooling and fan-free
- Suspension and fixing: double hanging bracket suitable for safe hanging and for floor positioning
- Adaptors: XLR and BARE END 16A adaptors included
- Signal connection: moulded IP signal IN/OUT connectors
- Power connection: moulded IP power IN/OUT connectors
- Dimensions (WxHxD): 1.000x106x71 mm
- Weight: 4,9 kg

CERTIFICATIONS / APPROVALS

- Certifications / Approvals: CE, UKCA, RCM, cTUVus, FCC

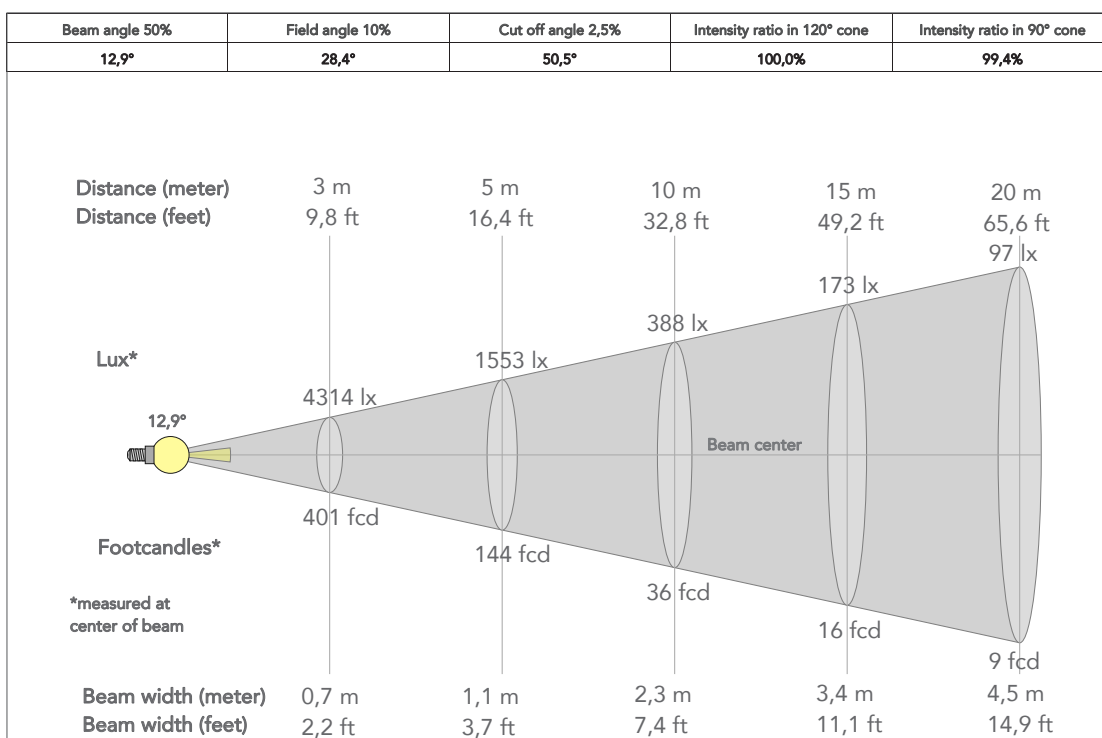
ACCESSORIES & RELATED PRODUCTS

- | | |
|-----------------------------------|---|
| ▪ ARCS18FIXBD | Barndoor to adjust the light beam for ARCSHINES18 and ARCSHINEM18 |
| ▪ AWEXAC2L03/05 10/20 | Extension IP67 power cable, IPpowercon-F -> IPpowercon-M. compatible 3/5/10/20 meters |
| ▪ AWEXDC2L03/05 10/20 | IP67 DMX extension cable for outdoor architectural projectors 3/5/10/20 meters |
| ▪ ARCSM18FILTER20/40 60/1060/3060 | Light diffusion filter for ARCSHINEM18 20°/40°/60°/10°x60°/30°x60° |

- | | |
|---------------------|--|
| ▪ ARCSSM18OUTERCASE | Outercase box for ground installation for ARCSHINES18 and ARCSHINEM18 series |
| ▪ AWEXDC1221ADP | Signal adapter kit from AWEXDC1 series to AWEXDC2 series and vice versa |
| ▪ AWEXAC12ADP | Power adapter from AWEXAC1 cable series to AWEXAC2 cable series |
| ▪ UPBOX1U | Firmware uploader kit, USB IN, 3pin XLR DMX OUT, USB OUT |

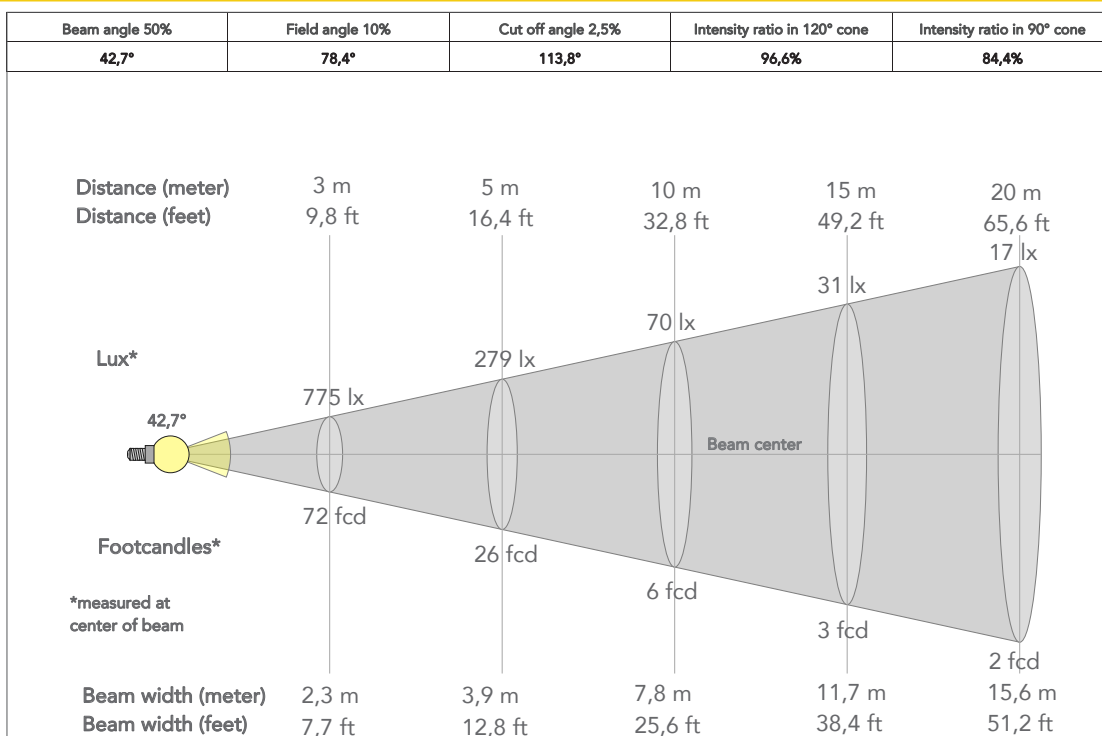
PRESET FULL ON

Beam angle 50%: 8°

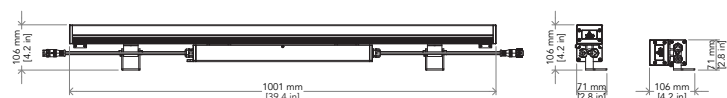


PRESET FULL ON (10°x60°)

Beam angle 50%: 8°



TECHICAL DRAWINGS



CERTIFICATIONS / APPROVALS



Conforms to UL STD. 1573
Certified to CSA STD: C22.2 NO. 166

Visit our website
for specifications and
tech documentations

