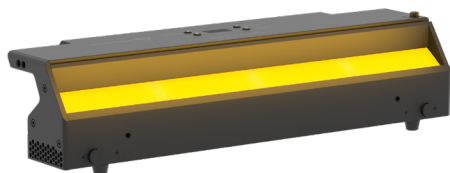


# EclCyclorama 050

170W linear soft CYC and flood light with RGB+Warm White colour mixing

ORDER CODE: **ECLCYC050**



**EclCyclorama 050** is a soft-edge, linear cyclorama and floodlight, designed in a surprisingly low profile form factor to meet applications at both front and end of the stage, offering an unprecedented level of brightness in its category. The fixture is equipped with a custom and calibrated RGB + Warm White LED source, which is capable to deliver a linear and high quality white reproduction of the entire spectrum with high CRI, TLCI and TM30 performances. The Optical system has been designed to offer a very wide asymmetric beam angle, and capable of a superior lumen efficiency, making the **EclCyclorama** range a very flexible solution, suitable for both application where fixture are connected each other or separated by a considerable distance, without worrying of dark-edge or uniformity gaps. The fixture is extremely user friendly and offers a multitude of control possibilities being DMX, RDM, Artnet, sACN and Wireless DMX.

## MAIN FEATURES

- RGB + Warm White colour systems allows high quality of whites (CRI 93 @3.200 K) and bright colours.
- Slim design, with only 12 cm height for easy implementation in the front or at the back of the stage.
- Wide Asymmetric beam angle to allow flexible installation at modular distances between fixtures
- Hardware designed with tilt angle adjustment, beam control and flexible hanging and ground stacking applications.

## TECHNICAL SPECIFICATION

### LIGHT SOURCE

- Source: 170W RGB + Warm White
- Luminous flux: (with 40°x80° filter on board) 13'896lm @full
- Lux: @1 m to wall and 1,5 m height @ full (with standard filter) 625 lx - (with 40° filter) 1'530 lx - (with 10°x60° filter) 1'590 lx - (with 30°x60° filter) 1'690lx
- CRI: 93 @3.200 K; 91 @5.600 K
- R9: 91 @3.200 K; 95 @5.600 K
- TLCI: 87 @5.600 K
- TM30 Rf: 88,8 @5.600 K
- TM30 Rg: 107,4 @5.600 K
- Source life expectancy: > 50.000 h

### OPTICS

- Beam angle: (VxH) 40°x80°
- Additional optics: see available accessories

### COLOUR SYSTEM

- Colour mixing: RGB + Warm White
- CCT: CCT control, + / - green correction, tungsten emulation
- White presets: 2.800 K - 6.500K
- Colour wheel: virtual colour wheel with macros

### DYNAMIC EFFECTS

- Control Resolution: 16-bit dimmer, colours
- Special features: linear crossfade channel from any white to any colour; virtual CTO on colours

### BODY

- Hardware on-board: sockets for quick-Lock Omega bracket (clamp not included)
- Body: sturdy die-cast aluminium body
- Body colour: black
- Other: +/- 8° angle adjusting

## ACCESSORIES & RELATED PRODUCTS

- |                |   |
|----------------|---|
| • 9313FXWL03   | Ass. 3x2.5mm TH07 cable, 16A 3p 230V CEE plug, SETSAC3FX socket, L.3 m      |
| • 9333FXWL03   | Ass. 3x2.5mm TH07 cable, SHUKO plug, SETSAC3FX socket, L.3m                 |
| • 938225L03    | 3x2.5mm TH07 Cable, 16A SETSAC3MX, 16A SETSAC3FX, L. 3m                     |
| • C6002B       | Slim aluminum clamp, 200kg loading, 48-51mm tubes, M10 bolt, Black          |
| • FCLECLCYC    | Flightcase for 4 pcs of ECLCYC100 or 8 pcs ECLCYC050 divided in two layers  |
| • RSR0630B     | Steel security cable for hanging bodies, inox steel shackle, L=60 cm, black |
| • TOUR53415L03 | Dmx cable HC5340. CANS5MXX XLR 5p->CANS5FXX XLR (f) 5p, L.3m                |

### CONTROL

- Protocols: DMX512, RDM, Art-Net, sACN, W-DMX
- Wireless Control: included, wireless solution receiver
- RDM: RDM for remote monitoring and settings
- Display: Graphic User Interface
- Firmware upgrade: yes, via USB - DMX interface (UPBOX1) not included

### ELECTRONICS

- Dimmer curves: selectable dimming modes available
- Strobe / shutter: 1-30 Hz, electronic
- Display battery: self-charging battery backup
- Operating temperature: -10° ~ +45°
- LED Control: flicker free frequency with adjustable PWM
- Selectable PWM: 600 ~ 25.000 Hz

### ELECTRICAL

- Mains power supply: 100-240V - 50/60Hz
- Max power consumption: 180W
- Power factor: >0,94

### PHYSICAL

- IP rating: IP20
- Cooling: heat sink without fan
- Suspension and fixing: any position with quick-lock omega brackets
- Signal connection: Amphenol XLR 5p IN/OUT connectors
- Data connection: RJ45 IN/OUT
- Power connection: Seetronic powerCON waterproof IN/OUT connectors
- Dimensions (WxHxD): 500x119x148mm
- Weight: 5kg

### CERTIFICATIONS / APPROVALS

- Certifications / Approvals: CE, UKCA, RCM, cTUVus, FCC

- |               |   |
|---------------|---|
| • WSBBF1G5    | BlackBox F-1 G5 transmitter, 2,45GHz & 5.2/5,8 GHz, DMX/ RDM, 512Ch             |
| • WSBBF1G6    | BlackBox F-1 G6 transrec, 512ch, 2.45GHz, DMX&RDM,Bluetooth,G3,G4,G4S, G5, CRMX |
| • WSBBR512G5  | BlackBox R-512 G5 receiver 512Ch, 2.45GHz & 5.8GHz, DMX/ RDM optional           |
| • WSBBR512G6  | BlackBox R-512 G6 receiver 512Ch, 2.45GHz,DMX&RDM,Bluetooth,G3,G4,G4S,G5,CRMX   |
| • ECLCYC050PO | Pole operated aluminium yoke bracket for pan/tilt for ECLCYC050                 |
| • ECLCYCBD050 | Upper and lower barndoors for adjust the light beam for ECLCYC050               |

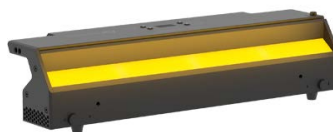
## ACCESSORIES & RELATED PRODUCTS

- ECLCYCF40L050 Light diffusion filter for ECLCYC series projectors, 40°, lenght 50 cm
- ECLCYCF1060L050 Light diffusion filter for ECLCYC series projectors, 10°x60°, lenght 50 cm
- ECLCYCF3060L050 Light diffusion filter for ECLCYC series projectors, 30°x60°, lenght 50 cm

- ECLCYCOHB Orientable hanging bar for ECLCYC series projectors
- OS25 Quick-Lock omega bracket
- UPBOX1U Firmware uploader kit, USB IN, 3pin XLR DMX OUT, USB OUT

## PRESET FULL ON

Beam angle 50%: 40°x80°



Total lumen output:

13100 lm

Peak candela output:

13655 cd

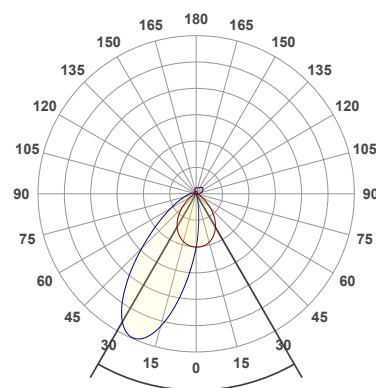
**PRODUCT NAME:**  
ECL CYC050

**MEASUREMENT CONDITIONS:**  
Beam angle:  
Filter Native

**Target:**  
Full On

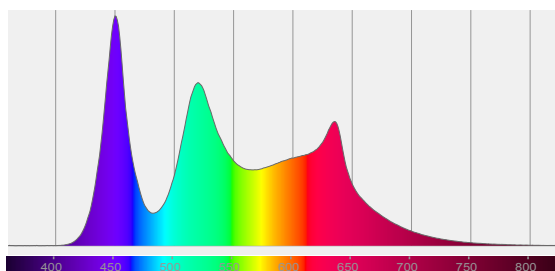
**Operator:**  
Paolo Carvone

**Date and time:**  
25/05/2020 13:15:32

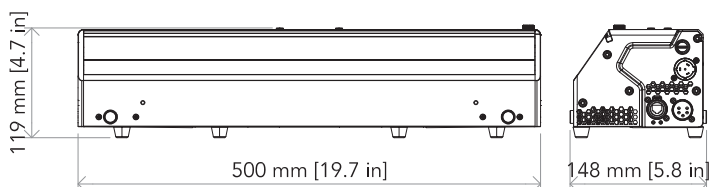


x(red curve) beam angle 50% 79.8°  
y(blue curve) beam angle 50% 40°

Spectra



## TECHNICAL DRAWINGS



## CERTIFICATIONS / APPROVALS



Conforms to UL STD. 1573  
Certified to CSA STD: C22.2 NO. 166

Visit our website  
for specifications and  
tech documentations

