

# Mosaico XL

540W IP66 zoomable LED image projector with CMY and framing shutter

ORDER CODE: **MOSAICOXL**



**Mosaico XL** is an extremely powerful outdoor LED image projector for long-range projection of textures, images and logos onto buildings and landscapes. Built in a durable IP66 die-cast housing, the **Mosaico XL** offers a phenomenal output of 14'500 lumens and an extensive set of features including linear CMY+CTO colour mixing system and profile to precisely shape the projection area. The exceptional zoom ranges from 6,6° to 50° allowing this fixture to be installed at any distance making it versatile in both near-field and long-throw installations, awesome for static and animated facade building lighting.

## MAIN FEATURES

- IP66 allowing long-lasting installation with minimal maintenance
- Equipped with 6,6°- 50° linear zoom system to for both near and long throw installation
- 540W White LED engine with 6.000 K CT delivering 14'500 lumens output
- Extensive feature set including CMY and linear CTO, shutter frame and animation wheel

## TECHNICAL SPECIFICATION

### LIGHT SOURCE

- Source: 540W high-power white LED
- CCT: 6.000K
- Luminous flux: (6,6°) 8'812 lm - (50°) 14'253lm
- Lux: (6,6°) 33'138 lx - (50°) 1'138lx @5 m full
- Source life expectancy: > 30.000 hrs (L70B10 @Ta 25° C / 77° F)

### OPTICS

- Zoom: 6,6° - 50° motorised linear zoom
- Lens diameter: 119mm
- Lens type: high-quality glass lens optics
- Focus: motorised

### COLOUR SYSTEM

- Colour mixing: linear CMY
- CCT: linear CTO correction 3.000 K ~ 6.000 K
- Colour wheel: 6 colour filters

### DYNAMIC EFFECTS

- Shutter system: 4 shutter blades with position and  $\pm 30^\circ$  angle adjustment,  $\pm 45^\circ$  rotation of the complete framing system
- Animation wheel: animation wheel with CW and CCW rotation
- Rotating gobos: 7 rotating gobos + open, interchangeable, indexing
- Gobo size (BW): outer: 26,9 mm - image: 20,5 mm
- Gobo size (Color): outer: 26,9 mm - image: 20,5 mm
- Circular prism: 4f with bi-directional rotation, indexing
- Frost: dual frost filter, soft-edge and heavy
- Iris: 5 ~ 100% motorised iris

### BODY

- Body: aluminium die-casting
- Body colour: RAL 9006
- Other: inspectable cover window for gobos replacement and maintenance and record scenes and create chases and shows throughout these scenes

### CONTROL

- Protocols: DMX512, RDM, W-DMX, Stand Alone programmer and playback
- DMX channels: 28 / 30 / 35 / 44channel
- Wireless Control: included, wireless solution receiver
- RDM: RDM for remote monitoring and settings
- Display: black OLED touch display
- Firmware upgrade: yes, via USB - DMX interface (UPBOX1) not included
- Master/Slave: for synchronised operation of more units linked in a chain

### ELECTRONICS

- Dimmer: linear 0 ~ 100% electronic dimmer
- Dimmer curves: 4 selectable dimming modes available
- Strobe / shutter: 1 - 30 Hz, electronic
- Display battery: self-charging battery backup
- Operating temperature: -20° C / +45° C (-4° F / +113° F)
- LED Control: flicker free operation

### ELECTRICAL

- Mains power supply: 100-240V - 50/60Hz
- Max power consumption: 600W
- Power factor: >0,96

### PHYSICAL

#### IP rating: 66 for outdoor installations

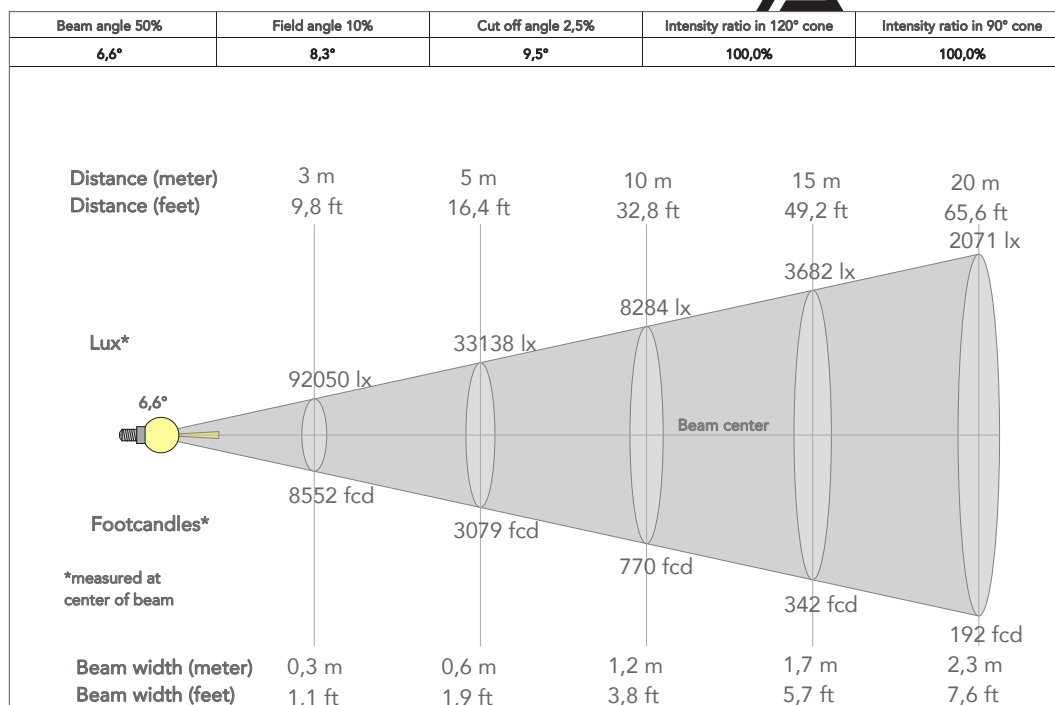
- Cooling: active, with IP low noise fan
- Suspension and fixing: bracket for hanging and positioning
- Adaptors: XLR and Schuko 16A adaptors included
- Signal connection: moulded IP signal IN/OUT connectors
- Power connection: moulded IP power IN/OUT connectors
- Dimensions (WxHxD): 403x462x565mm
- Weight: 37kg
- CERTIFICATIONS / APPROVALS
- Certifications / Approvals: CE, UKCA, RCM, cTUVus, FCC

## ACCESSORIES & RELATED PRODUCTS

▪ C6002B	Slim aluminum clamp, 200kg loading, 48-51mm tubes, M10 bolt, Black	▪ WSBBS512G6	BlackBox R-512 G6 receiver 512Ch, 2.45GHz, DMX&RDM, Bluetooth, G3, G4, G4S, G5, CRMX
▪ FCLMOSAICOXL	Flightcase for 3 pcs of MOSAICOXL	▪ MOSUNIBRACKXL	Bracket for MOSAICOXL for wall mounting and suspension on poles
▪ RSR0670B	Steel security cable for hanging bodies, inox steel shackle, L=60 cm, black	▪ AWEXAC1L03/05/10/20	IP67 power extension cable for outdoor architectural projectors, L.03/05/10/20 m
▪ WSBBF1G5	BlackBox F-1 G5 transmitter, 2,45GHz & 5.2/5,8 GHz, DMX/RDM, 512Ch	▪ GBS8399BW	Custom glass grid gobo for MOSAICOXL, used to map perfectly any building surface
▪ WSBBF1G6	BlackBox F-1 G6 transrec, 512ch, 2.45GHz, DMX&RDM, Bluetooth, G3, G4, G4S, G5, CRMX	▪ AWEXDC1L03/05/10/20	IP67 DMX extension cable for outdoor architectural projectors, L.03/05/10/20 m
▪ WSBBS512G5	BlackBox R-512 G5 receiver 512Ch, 2.45GHz & 5.8GHz, DMX/RDM optional	▪ UPBOX1U	Firmware uploader kit, USB IN, 3pin XLR DMX OUT, USB OUT

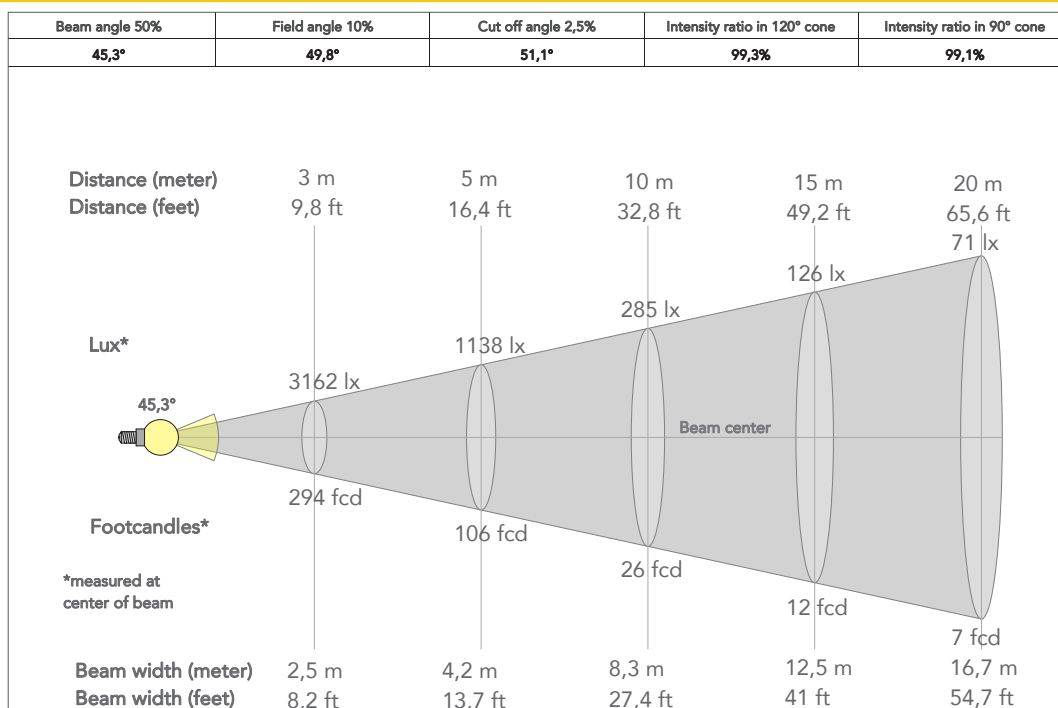
## PRESET FULL ON

Beam angle 50%: 6,6°

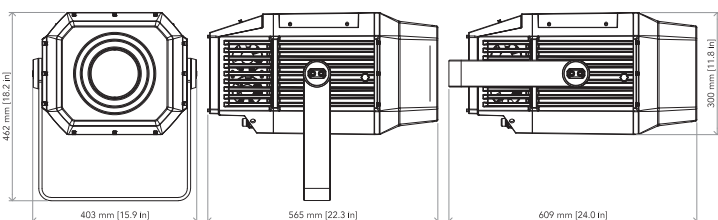


## PRESET FULL ON

Beam angle 50%: 50°



## TECHNICAL DRAWINGS



## CERTIFICATIONS / APPROVALS



Conforms to UL STD. 1573  
Certified to CSA STD: C22.2 NO. 166

Visit our website  
for specifications and  
tech documentations

