

Astra Hybrid420IP

IP65 Hybrid moving beam-spot, with a 420W USHIO NSL421 lamp

ORDER CODE: **ASTRAHYB420IP**



The **Astra Hybrid420IP** is the first waterproofed (IP65) hybrid moving light in the Astra range, designed for any large-scale touring applications and exterior installations. Despite its waterproofed exterior, the unit meets the same performance and features as the indoor version, excelling both as a truly bright beam light and perfect spotlight, with tremendous brightness and superior evenness when comparing with other fixtures in the same category. The **Astra Hybrid420IP**'s optical system moves linearly from 2.7° to 40°, and it's equipped with a brand new 420W USHIO NSL421 lamp, featuring an equivalent output of higher power consumption units, but in a smaller, lighter, and faster body. The extensive feature set of the **Astra Hybrid420IP** includes functions like aerial effects with a fat and parallel beam and crisp projection textures and pattern effects, with linear CMY, three colour-wheels, an animation wheel, two overlapping prisms, frost and two gobo wheels.

MAIN FEATURES

- IP65 Hybrid moving light equipped with a 420W USHIO NSL421 lamp
- Linear zoom ranging from 2.7° to 40°
- Linear CMY, animation wheel, 2 gobo wheels, 3 colour wheels, 2 overlapping prisms

TECHNICAL SPECIFICATION

LIGHT SOURCE

- Source: 420 W USHIO NSL421
- CCT: 7.000
- Luminous flux: 35.815 lm
- Lux: (2.7°) 99.284 lx - (40°) 281 lx @15 m
- Source life expectancy: 6.000 h

OPTICS

- Zoom: 2.7° - 40° motorised linear zoom
- Lens diameter: 153 mm
- Lens type: HD anti-reflection lenses with achromatic coating
- Focus: motorised

COLOUR SYSTEM

- Colour mixing: CMY colour system on 3 gradually fading colour wheels
- CCT: on wheel 2.500 K and 3.200 K + CTB
- Colour wheel: 15 dichroic filters on 3 independent colour wheels

DYNAMIC EFFECTS

- Animation wheel: animation wheel with CW and CCW rotation
- Rotating gobos: 9 rotating gobos + open, interchangeable, indexing
- Gobo size: outer: 15,9 mm - image: 12 mm - thickness: 1,1 mm
- Fixed gobos: 18 fixed gobos + open
- FX generator: 2 prisms overlap for spectacular aerial effects
- Circular prism: 8f and 4 f with bi-directional rotation, indexing
- Frost: linear 0 - 100% frost filter

BODY

- Hardware on-board: sockets for quick-Lock Omega bracket (clamp not included)
- Pan angle: 540°
- Tilt angle: 270°
- Pan/Tilt resolution: bit 8 / 16-bit
- Feedback: automatic repositioning after accidental movement
- Body: weatherproof IP65 construction
- Body colour: RAL 9004

ACCESSORIES & RELATED PRODUCTS

- FCLASTRAH420IP Flight case for 2 pcs of ASTRAHYB420IP
- OSIP IP65 quick-lock omega bracket compatible with IP65 moving heads
- IPTTESTBOX Portable vacuum and pressure tester for ProLights IP fixtures
- C6002B Slim aluminum clamp, 200kg loading, 48-51mm tubes, M10 bolt, Black
- RSR0670B Steel security cable for hanging bodies, inox steel shackle, L=60 cm, black
- 9333FXWL03 Ass. 3x2.5mm TH07 cable, SHUKO plug, SETSAC3FX socket, L.3m
- 9313FXWL03 Ass. 3x2.5mm TH07 cable, 16A 3p 230V CEE plug, SETSAC3FX socket, L.3 m
- 938225L03 3x2.5mm TH07 Cable, 16A SETSAC3MX, 16A SETSAC3FX, L. 3m

CONTROL

- Protocols: DMX512, RDM, Art-Net, sACN, W-DMX
- DMX channels: 30 channel
- Wireless Control: included, LumenRadio Timo Fx DMX/RDM compatible with both CRMX (Lumen Radio) and W-DMX (Wireless DMX)
- RDM: RDM for remote monitoring and settings
- Display: LCD high resolution colour display with autoflip
- Firmware upgrade: via menu with internal memory or via USB - DMX interface (UPBOX2) not included
- Other: 16bit control of dimmer

ELECTRONICS

- Dimmer: linear 0 ~ 100% mechanical dimmer
- Strobe / shutter: 1 - 28 flash(s), mechanical
- Display battery: self-charging battery backup
- Operating temperature: -20° ~ +45°

ELECTRICAL

- Mains power supply: 100-240V - 50/60Hz
- Max power consumption: 590 W
- Output (at 230V): 4 units on a single power line
- Power factor: > 0,96

PHYSICAL

- IP rating: 65 (*)
- Cooling: forced air with fan
- Suspension and fixing: any position with quick-lock omega brackets
- Pan / tilt lock: for transportation and maintenance
- Signal connection: Amphenol XLR 5p IN/OUT connectors
- Data connection: Seetronic Art-Net RJ45 IN/OUT
- Power connection: Seetronic powerCON TRUE IP65 IN
- Dimensions (WxHxD): 441x741x310 mm
- Weight: 42,1 kg
- (*) NOTE: Suitable for permanent outdoor use, provided installation and maintenance cycles by qualified technicians are carried.

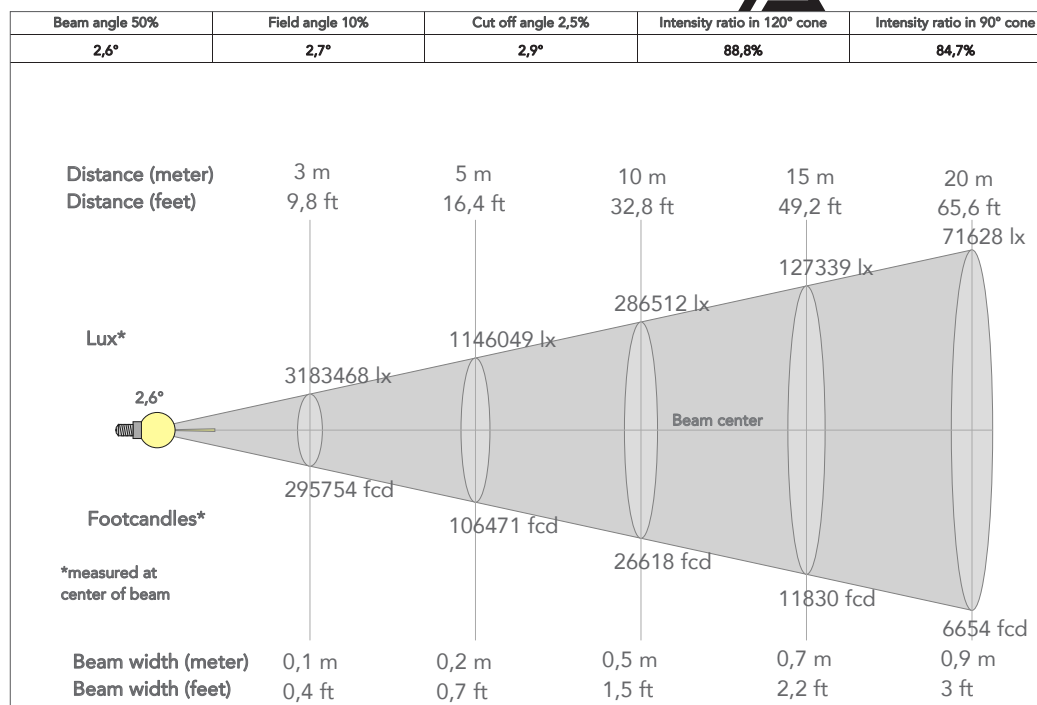
CERTIFICATIONS / APPROVALS

- Certifications / Approvals: CE, UKCA, RCM, cTUVus, FCC

- INF53415L03 Dmx cable HC5340. SETMC5MXXB XLR 5p->SETMC5FXXB XLR (f) 5p L.3m
- WSBBF1G5 BlackBox F-1 G5 transmitter, 2,45GHz & 5.2/5,8 GHz, DMX/RDM, 512Ch
- WSBBF1G6 BlackBox F-1 G6 transrec, 512ch, 2.45GHz, DMX&RDM, Bluetooth, G3, G4, G4S, G5, CRMX
- WSBBR512G5 BlackBox R-512 G5 receiver 512Ch, 2.45GHz & 5.8GHz, DMX/RDM optional
- WSBBR512G6 BlackBox R-512 G6 receiver 512Ch, 2.45GHz, DMX&RDM, Bluetooth, G3, G4, G4S, G5, CRMX
- UPBOX2P5 Firmware uploader kit, USB IN, 5-pin XLR DMX OUT

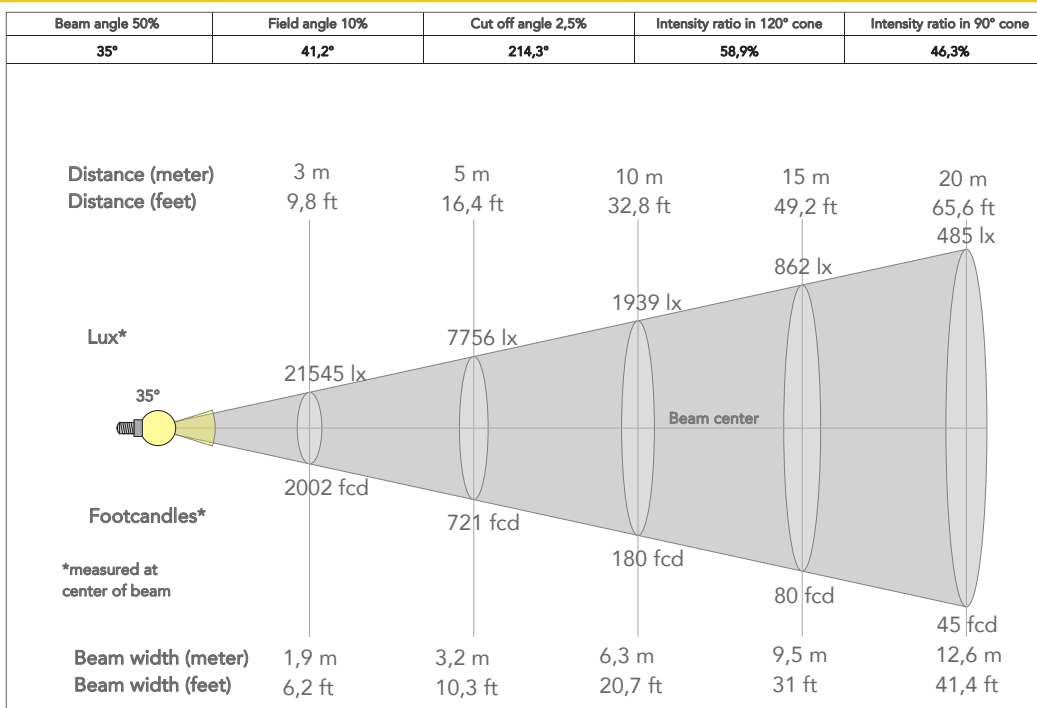
PRESET FULL ON

Beam angle 50%: 2,7°

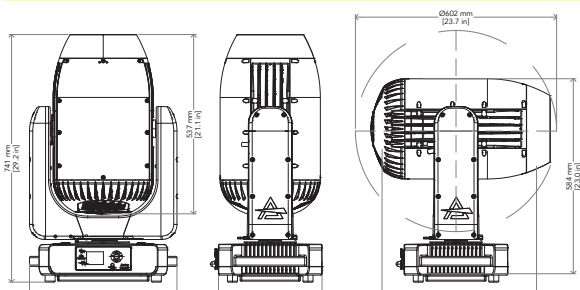


PRESET FULL ON

Beam angle 50%: 40°



TECHNICAL DRAWINGS



CERTIFICATIONS / APPROVALS



Conforms to UL STD. 1573
Certified to CSA STD. C22.2 NO. 166

Visit our website
for specifications and
tech documentations

