

Astra Hybrid420

Hybrid moving beam-spot, with a 420W USHIO NSL421 lamp

ORDER CODE: **ASTRAHYB420**



The **Astra Hybrid420** is a hybrid moving head that excels as a bright beam fixture and perfect spotlight, offering a tremendous lumen output and superior evenness compared with other lights in the same category. The **Astra Hybrid420** optical system moves linearly from 2.7° to 40°, and it's equipped with a brand new 420W USHIO NSL421 lamp, featuring an equivalent output of higher power consumption units, but in a smaller, lighter, and faster body. The extensive feature set of the **Astra Hybrid420** includes functions like aerial effects with a fat and parallel beam and crisp projection textures and pattern effects, with linear CMY, three colour-wheels, an animation wheel, two overlapping prisms, frost and two gobo wheels.

MAIN FEATURES

- Hybrid moving light equipped with a 420W USHIO NSL421 lamp
- Linear zoom ranging from 2.7° to 40°
- Linear CMY, animation wheel, 2 gobo wheels, 3 colour wheels, 2 overlapping prisms

TECHNICAL SPECIFICATION

LIGHT SOURCE

- Source: 420 W USHIO NSL421
- CCT: 7.000
- Luminous flux: 35.815 lm
- Lux: (2.7°) 99.284 lx - (40°) 281 lx @15 m
- Source life expectancy: 6.000 h

OPTICS

- Zoom: 2.7° - 40° motorised linear zoom
- Lens diameter: 153 mm
- Lens type: HD anti-reflection lenses with achromatic coating
- Focus: motorised

COLOUR SYSTEM

- Colour mixing: CMY colour system on 3 gradually fading colour wheels
- CCT: on wheel 2.500 K and 3.200 K + CTB
- Colour wheel: 15 dichroic filters on 3 independent colour wheels

DYNAMIC EFFECTS

- Animation wheel: animation wheel with CW and CCW rotation
- Rotating gobos: 9 rotating gobos + open, interchangeable, indexing
- Gobo size: outer: 15,9 mm - image: 12 mm - thickness: 1,1 mm
- Fixed gobos: 18 fixed gobos + open
- FX generator: 2 prisms overlap for spectacular aerial effects
- Circular prism: 8 f and 4 f with bi-directional rotation, indexing
- Frost: linear 0 - 100% frost filter

BODY

- Hardware on-board: sockets for quick-Lock Omega bracket (clamp not included)
- Pan angle: 540°
- Tilt angle: 270°
- Pan/Tilt resolution: bit 8 / 16-bit
- Feedback: automatic repositioning after accidental movement
- Body: aluminium structure with high-resistance polycarbonate cover
- Body colour: RAL 9004

CONTROL

- Protocols: DMX512, RDM, Art-Net, sACN, W-DMX
- DMX channels: 30 channel
- Wireless Control: included, LumenRadio Timo Fx DMX/RDM compatible with both CRMX (Lumen Radio) and W-DMX (Wireless DMX)
- RDM: RDM for remote monitoring and settings
- Display: LCD high resolution colour display with autoflip
- Firmware upgrade: via menu with internal memory or via USB - DMX interface (UPBOX2) not included
- Other: 16bit control of dimmer

ELECTRONICS

- Dimmer: linear 0 ~ 100% mechanical dimmer
- Strobe / shutter: 1 - 28 flash(s), mechanical
- Display battery: self-charging battery backup
- Operating temperature: -10° ~ +45°

ELECTRICAL

- Mains power supply: 100-240V - 50/60Hz
- Max power consumption: 590 W
- Output (at 230V): 4 units on a single power line
- Power factor: > 0,96

PHYSICAL

- IP rating: 20
- Cooling: forced air with fan
- Suspension and fixing: any position with quick-lock omega brackets
- Pan / tilt lock: for transportation and maintenance
- Signal connection: Amphenol XLR 5p IN/OUT connectors
- Data connection: Neutrik Art-Net RJ45 IN/OUT
- Power connection: Neutrik powerCON TRUE1 IN connector
- Dimensions (WxHxD): 445x668x310 mm
- Weight: 26,2 kg

CERTIFICATIONS / APPROVALS

- Certifications / Approvals: CE, UKCA, RCM, cTUVus, FCC

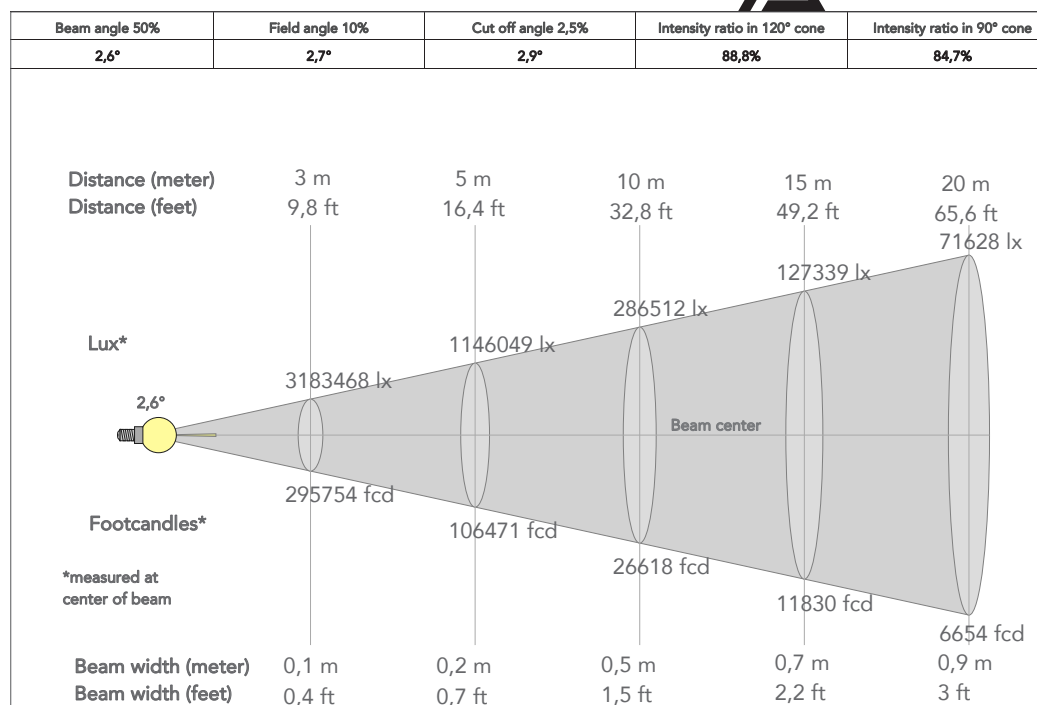
ACCESSORIES & RELATED PRODUCTS

- | | |
|----------------|---|
| • FCLASTRAH420 | Flight case for 2 pcs of ASTRAHYB420 |
| • OS24 | Quick-lock omega bracket. |
| • C6002B | Slim aluminum clamp, 200kg loading, 48-51mm tubes, M10 bolt, Black |
| • RSR0670B | Steel security cable for hanging bodies, inox steel shackle, L=60 cm, black |
| • 9533FXWL03 | Ass. 3x2.5mm TH07 cable, SHUKO plug, MENAC3FXW socket, L.3m |
| • 9513FXWL03 | Ass. 3x2.5mm TH07 cable, 16A 3p 230V CEE plug, MENAC3FXW socket, L.3 m |
| • 958225L03 | 3x2.5mm TH07 Cable, 16A 3p PwCon MXW, 16A 3p PwCon FXW, L. 3m |

- | | |
|----------------|--|
| • TOUR53415L03 | Dmx cable HC5340. CANC5MXX XLR 5p->CANC5FXX XLR (f) 5p, L.3m |
| • WSBBF1G5 | BlackBox F-1 G5 transmitter, 2,45GHz & 5.2/5,8 GHz, DMX/RDM, 512Ch |
| • WSBBF1G6 | BlackBox F-1 G6 transrec, 512ch, 2,45GHz, DMX&RDM, Bluetooth, G3, G4, G4S, G5, CRMX |
| • WSBBR512G5 | BlackBox R-512 G5 receiver 512Ch, 2,45GHz & 5.8GHz, DMX/RDM optional |
| • WSBBR512G6 | BlackBox R-512 G6 receiver 512Ch, 2,45GHz, DMX&RDM, Bluetooth, G3, G4, G4S, G5, CRMX |
| • UPBOX2P5 | Firmware uploader kit, USB IN, 5-pin XLR DMX OUT |

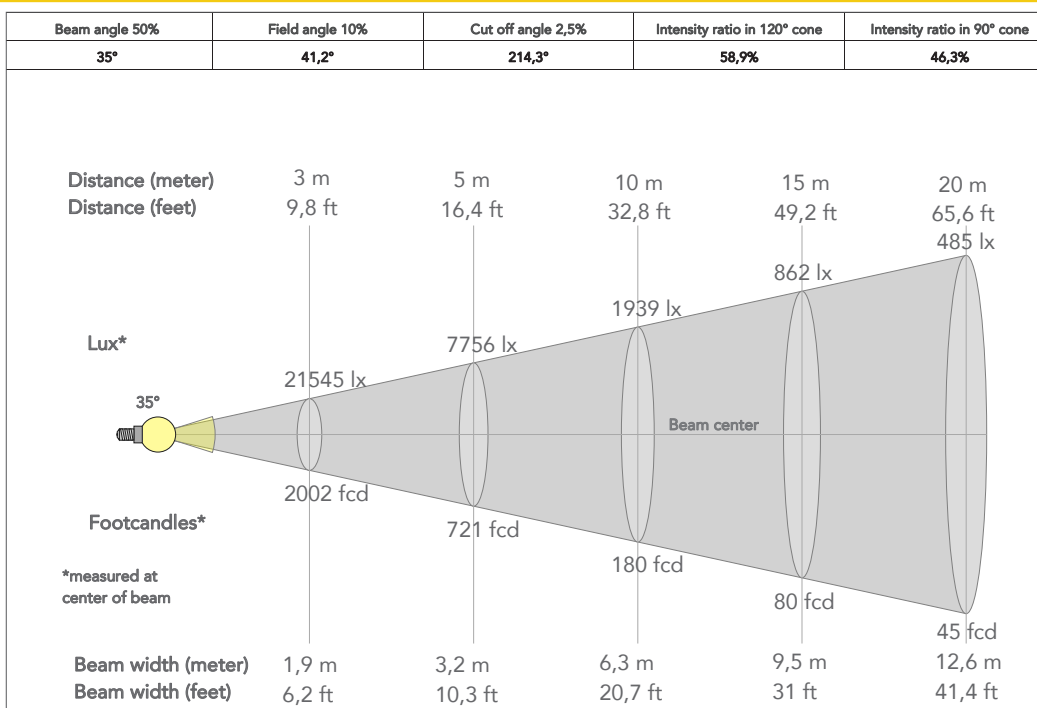
PRESET FULL ON

Beam angle 50%: 2,7°

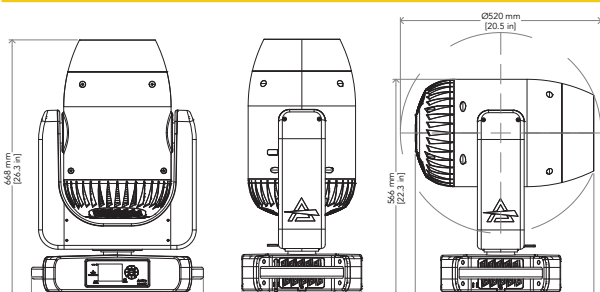


PRESET FULL ON

Beam angle 50%: 40°



TECHNICAL DRAWINGS



CERTIFICATIONS / APPROVALS



Conforms to UL STD. 1573
Certified to CSA STD: C22.2 NO. 166

Visit our website
for specifications and
tech documentations

