

Astra Wash37Pix

37x40W RGBW moving wash light with 4°-54° zoom, pixel control and pixel ring

ORDER CODE: **ASTRAWASH37PIX**



The **Astra Wash37PIX** is a powerful LED moving wash light, designed for large stages, arena tours and venues. The 37x40W Osram RGBW LED light source, plus the exterior pixel ring, make this fixture the most powerful LED wash in its class. The unit features an extremely high-efficiency optical system capable of zooming from 4° to 54°, creating beautiful convergence in-air effects and smooth wash spreads. The **Astra Wash37PIX** is single pixel controllable, with multiple on-board effects, and allows access to a precise and advanced white and colour control, all through DMX, CRMX+W-DMX, Art-Net, sACN, Kling-Net and RDM.

MAIN FEATURES

- Silent operation, smooth and fast movements
- Zoom from 4° to 54° with high optical efficiency
- Pixel and ring control, precise white CCT, multiple FX and colour features

TECHNICAL SPECIFICATION

LIGHT SOURCE

- Source: 37x40 W RGBW Osram Ostar LEDs
- Luminous flux: (4°) 8'452 lm - (54°) 17'898 lm @full
- Lux: (4°) 73'522 lx - (54°) 2'140 lx @5 m full
- Other: outer RGB pixel ring with frost film
- Source life expectancy: > 50.000 h

OPTICS

- Zoom: 4° - 54 ° motorised linear zoom
- Lens type: honeycomb gapless plano-convex optics
- Additional optics: diffuser on outer pixel ring

COLOUR SYSTEM

- Colour mixing: RGBW / FC
- CCT: CCT control, + / - green correction, tungsten emulation
- White presets: 2.800 K ~ 10.000 K
- Colour wheel: virtual colour wheel with macros
- Macros: several pre-built pixel macros with adjustable speed

DYNAMIC EFFECTS

- Control Resolution: 16-bit dimmer, colours
- Pixel patterns: pre-programmed dynamic and static patterns
- FX generator: adjustable foreground/background colour, index, speed, direction
- Special features: outer RGB, pixel ring with several built in FX macros and linear crossfade channel from any white to any colour; virtual CTO on colours

BODY

- Hardware on-board: sockets for quick-Lock Omega bracket (clamp not included)
- Pan angle: 540 °
- Tilt angle: 233 °
- Feedback: automatic repositioning after accidental movement
- Body: aluminium structure with high-resistance polycarbonate cover
- Body colour: RAL 9004

CONTROL

- Protocols: DMX512, RDM, Art-Net, Klingnet, sACN, W-DMX

ACCESSORIES & RELATED PRODUCTS

- | | |
|-------------------|------------------------------------------------------------------------------|
| • FCLA STRAW37PIX | Flight case for 2 pcs of ASTRAWASH37PIX |
| • ASTRAW37PEC | Egg Crate for ASTRAWASH37PIX |
| • ASTRAW37MBCR | Matt black cover for ring for ASTRAWASH37PIX |
| • 9513FXWL03 | Ass. 3x2.5mm TH07 cable, 16A 3p 230V CEE plug, MENAC3FXW socket, L3m |
| • 9533FXWL03 | Ass. 3x2.5mm TH07 cable, SHUKO plug, MENAC3FXW socket, L3m |
| • 958225L03 | 3x2.5mm TH07 Cable, 16A 3p PwCon MXW, 16A 3p PwCon FXW, L3m |
| • C6002B | Slim aluminum clamp, 200kg loading, 48-51mm tubes, M10 bolt, Black |
| • RSR1235B | Steel security cable for hanging bodies, inox steel shackle, L=120 cm, black |

- DMX channels: main personality 23 / 30 / 44 / 52 channel
- Pixel control: OFF, ring and pixel2pixel
- Wireless Control: included, LumenRadio Timo Fx DMX/RDM compatible with both CRMX (Lumen Radio) and W-DMX (Wireless DMX)
- RDM: RDM for remote monitoring and settings
- Display: LCD high resolution colour display with autoflip
- Firmware upgrade: yes, via USB - DMX interface (UPBOX2) not included

ELECTRONICS

- Dimmer: linear 0 ~ 100% electronic dimmer
- Dimmer curves: 4 selectable dimming modes available
- Strobe / shutter: 1 - 30 Hz, electronic
- Display battery: self-charging battery backup
- Operating temperature: -10° ~ +40°
- LED Control: flicker free operation
- Selectable PWM: 600 ~ 50.000 Hz

ELECTRICAL

- Mains power supply: 100-240V - 50/60Hz
- Max power consumption: 1227 W
- Output (at 230V): 3 units on a single power line
- Power factor: > 0,97

PHYSICAL

- IP rating: 20
- Cooling: forced air with fan
- Suspension and fixing: any position with quick-lock omega brackets
- Pan / tilt lock: for transportation and maintenance
- Signal connection: Amphenol XLR 5p IN/OUT connectors
- Data connection: Neutrik Art-Net RJ45 IN/OUT
- Power connection: Neutrik powerCON TRUE1 IN/OUT connectors
- Dimensions (WxHxD): 520x644x310 mm
- Weight: 26,4 kg

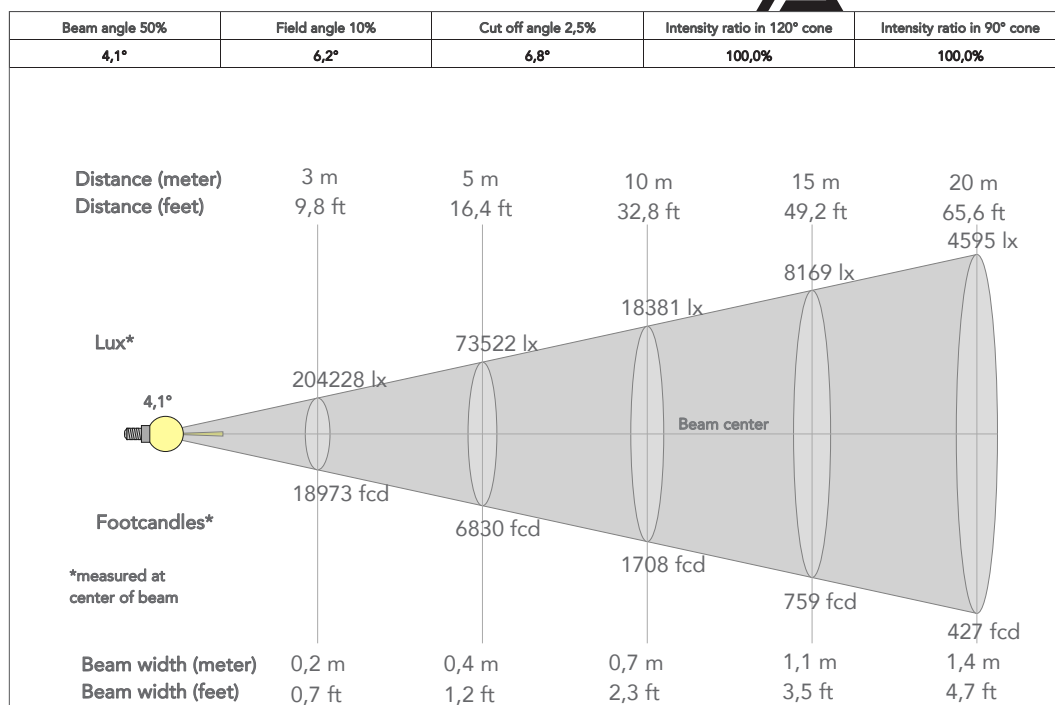
CERTIFICATIONS / APPROVALS

- Certifications / Approvals: CE, UKCA, RCM, cTUVus, FCC

- | | |
|----------------|--------------------------------------------------------------------------------------|
| • TOUR53415L03 | Dmx cable HC5340. CANS5MXX XLR 5p->CANS5FX XLR (f) 5p, L3m |
| • WSBBF1G5 | BlackBox F-1 G5 transmitter, 2,45GHz & 5.2/5,8 GHz, DMX/RDM, 512Ch |
| • WSBBF1G6 | BlackBox F-1 G6 transrec, 512ch, 2.45GHz, DMX&RDM, Bluetooth, G3, G4, G4S, G5, CRMX |
| • WSBBR512G5 | BlackBox R-512 G5 receiver 512Ch, 2.45GHz & 5.8GHz, DMX/RDM optional |
| • WSBBR512G6 | BlackBox R-512 G6 receiver 512Ch, 2.45GHz, DMX&RDM, Bluetooth, G3, G4, G4S, G5, CRMX |
| • OS24 | Quick-lock omega bracket. |
| • UPBOX2 | Firmware uploader kit, USB IN, 3-pin XLR DMX OUT |

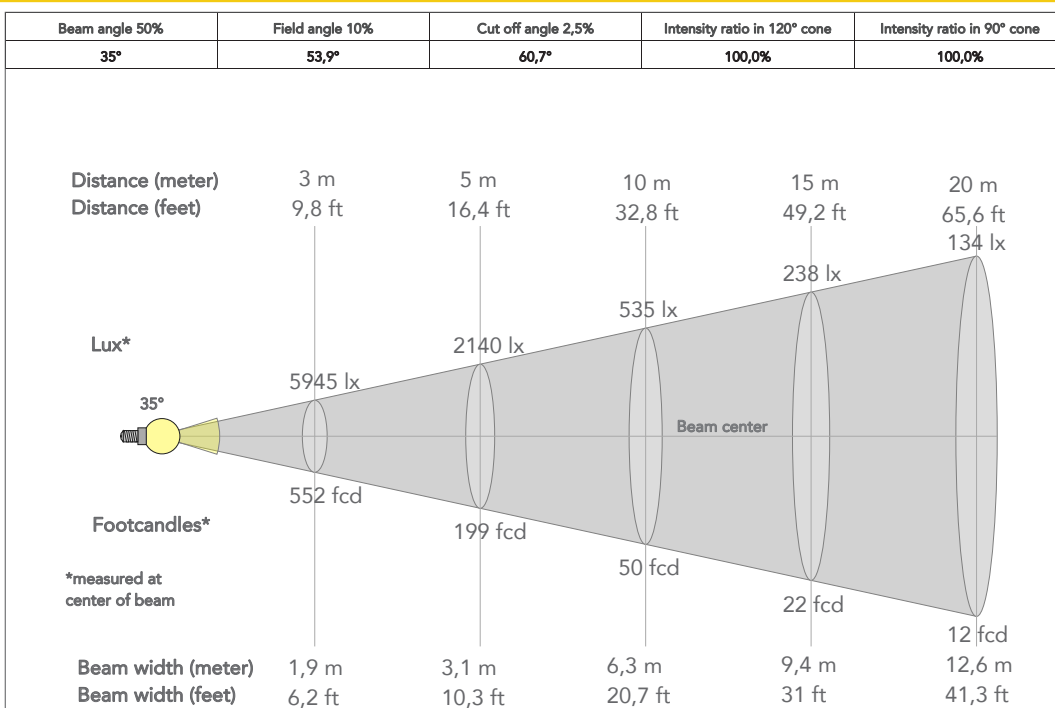
PRESET FULL ON

Beam angle 50%: 4°

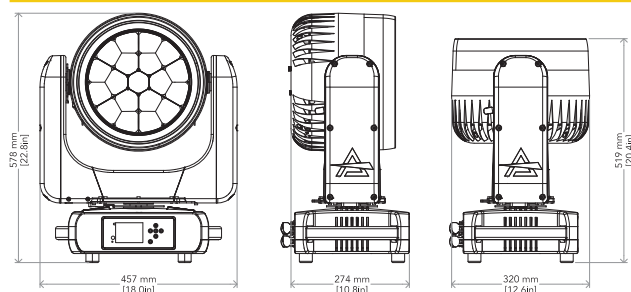


PRESET FULL ON

Beam angle 50%: 54°



TECHNICAL DRAWINGS



CERTIFICATIONS / APPROVALS



Conforms to UL STD. 1573
Certified to CSA STD: C22.2 NO. 166

Visit our website
for specifications and
tech documentations

