

# Stark 1000

19x40W high power LED wash/beam light with pixel mapping

ORDER CODE: **STARK1000**



**Stark 1000** is a new generation, high output, LED wash light designed to bring the workhorse LED wash light up-to-date. Featuring 19 of Osrams new 40 W RGBW Ostar LEDs it delivers massive output with a huge colour range and an extensive toolkit of effects.

## MAIN FEATURES

- 19 LED RGBW/FC Osram 40W
- Massive 4° to 38° linear zoom range from beam to wash
- Individual control of calibrated pixels with on-board FX generator for fast and precise effects
- Liquid cooling system for efficient cooling with virtually no noise

## TECHNICAL SPECIFICATION

### LIGHT SOURCE

- Source: 19x40W RGBW Osram Ostar LEDs
- CCT: Tunable 2.000 K ~ 10.000K
- Luminous flux: (4°) 6'420 lm - (38°) 6'893lm @full
- Lux: (4°) 38'175lx @5 m full
- Lux: (38°) 1'895lx @5 m full
- Source life expectancy: > 50.000 h

### OPTICS

- Zoom: 4° - 38° motorised linear zoom
- Lens diameter: 275mm
- Lens type: high-quality glass lens optics

### COLOUR SYSTEM

- Colour mixing: RGBW / FC
- CCT: CCT control through dedicated DMX channel
- White presets: 2.000 K ~ 10.000K
- Colour wheel: virtual colour wheel with macros
- Macros: several pre-built pixel macros with adjustable speed

### DYNAMIC EFFECTS

- Pixel patterns: pre-programmed dynamic and static patterns
- FX generator: adjustable foreground/background colour, index, speed, direction

### BODY

- Pan angle: 540° / 630°
- Tilt angle: 233°
- Pan/Tilt resolution: 16-bit
- Feedback: automatic repositioning after accidental movement
- Body: aluminium structure with high-resistance polycarbonate cover
- Body colour: black

### CONTROL

- Protocols: DMX512, RDM, Art-Net, W-DMX
- DMX channels: 16 / 26 / 27 / 36 / 98channel

## ACCESSORIES & RELATED PRODUCTS

▪ 9513FXWL03	Ass. 3x2.5mm TH07 cable, 16A 3p 230V CEE plug, MENAC3FXW socket, L.3 m
▪ 9533FXWL03	Ass. 3x2.5mm TH07 cable, SHUKO plug, MENAC3FXW socket, L.3m
▪ 958225L03	3x2.5mm TH07 Cable, 16A 3p PwCon MXW, 16A 3p PwCon FXW, L.3m
▪ C6016B	Quick-trigger slim clamp, 250Kg load, 48-51mm tubes, M10 bolt incl, Black
▪ OS24	Quick-lock omega bracket.
▪ RSR0630B	Steel security cable for hanging bodies, inox steel shackle, L=60 cm, black
▪ TOUR53415L03	Dmx cable HC5340. CANC5MXX XLR 5p->CANC5FXH XLR (f) 5p, L.3m
▪ WSBBF1G5	BlackBox F-1 G5 transmitter, 2,45GHz & 5.2/5,8 GHz, DMX/ RDM, 512Ch

- Pixel control: pixel2pixel control
- Wireless Control: included, wireless solution receiver
- RDM: RDM for remote monitoring and settings
- Display: LCD high resolution colour display with autoflip
- Firmware upgrade: yes, via USB - DMX interface (UPBOX2) not included
- Hibernation: power safe mode when lost DMX
- Master/Slave: for synchronised operation of more units linked in a chain
- Other: THEATRE mode for silent operation and fan control through DMX

### ELECTRONICS

- Dimmer: linear 0 ~ 100% electronic dimmer
- Dimmer curves: selectable dimming modes available
- Strobe / shutter: 1 - 30 Hz, electronic
- Display battery: self-charging battery backup
- Operating temperature: -10° ~ +45°
- LED Control: flicker free operation

### ELECTRICAL

- Mains power supply: 100-240V - 50/60Hz
- Max power consumption: 615W
- Max power consumption (at 120V): 615W
- Power factor: 0,96

### PHYSICAL

- IP rating: 20
- Cooling: combination of heat pipe cooling system and low noise fan
- Suspension and fixing: any position with quick-lock omega brackets
- Pan / tilt lock: for transportation and maintenance
- Signal connection: Amphenol XLR 5p IN/OUT connectors
- Data connection: Art-Net RJ45 IN/OUT
- Power connection: Neutrik powerCON TRUE1 IN connector
- Dimensions (WxHxD): 431x564x248mm
- Weight: 18kg

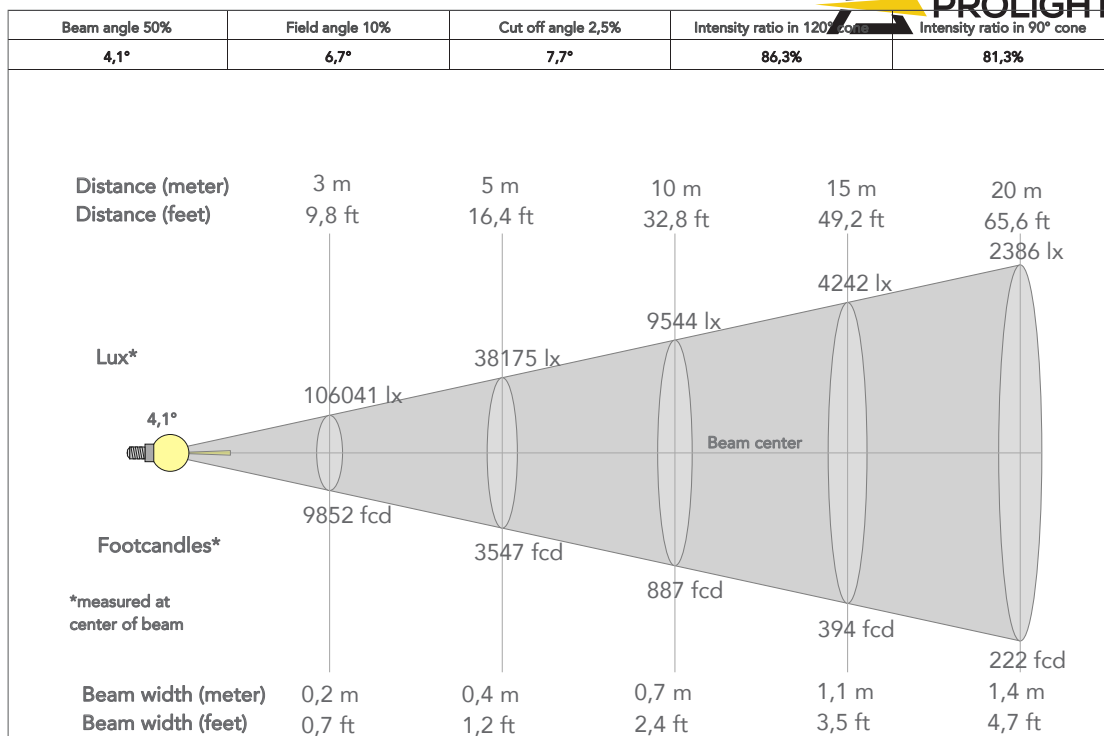
### CERTIFICATIONS / APPROVALS

- Certifications / Approvals: CE, UKCA, RCM, cTUVus, FCc

▪ WSBBF1G6	BlackBox F-1 G6 transrec, 512ch, 2.45GHz, DMX&RDM,Bluetooth,G3,G4,G4S, G5, CRMX
▪ WSBBR512G5	BlackBox R-512 G5 receiver 512Ch, 2.45GHz & 5.8GHz, DMX/ RDM optional
▪ WSBBR512G6	BlackBox R-512 G6 receiver 512Ch, 2.45GHz,DMX&RDM,Bluetooth,G3,G4,G4S,G5,CRMX
▪ WR24ANG5	WIRELESS SOLUTION, nano RX DMX 3.3V/5V-18V MCX
▪ UPBOX2	Firmware uploader kit, USB IN, 3-pin XLR DMX OUT
▪ WSA40501	WDMX, antenna 2.4Ghz 2dBi omnidirectional, folding, SMA-male, indoor
▪ FCL100037	Flight case for 2x STARK1000 or DIAMOND37
▪ FSHLW02	1U Foam shell compatible with DIAMOND37, STARK1000

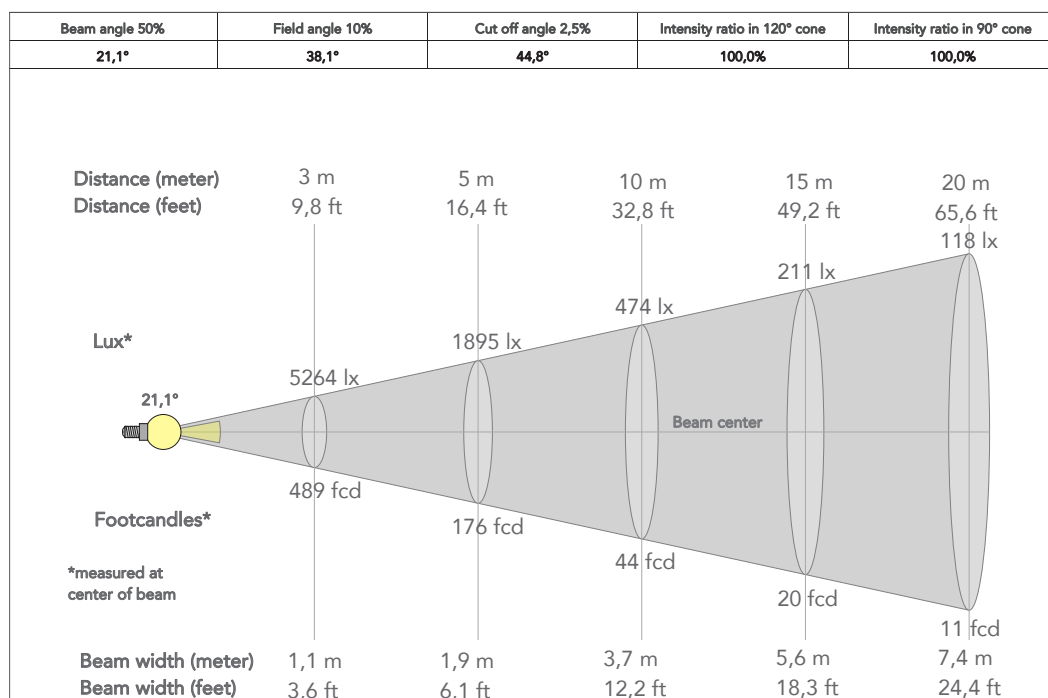
# PRESET FULL ON

Beam angle 50%: 4°

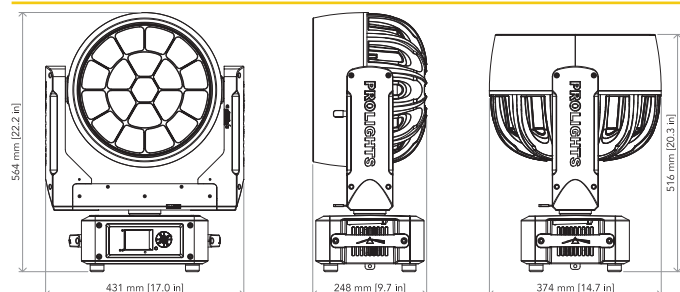


# PRESET FULL ON

Beam angle 50%: 38°



## TECHNICAL DRAWINGS



## CERTIFICATIONS / APPROVALS



Conforms to UL STD. 1573  
Certified to CSA STD: C22.2 NO. 166

Visit our website  
for specifications and  
tech documentations

