

ArcPod 27VW

27x10W VW outdoor IP66 LED wash light for exterior installations

ORDER CODE: **ARCP0D27VW**



ArcPod 27VW is a compact high-power exterior wash light featuring an outstanding brightness of 26'000 lumens. It is equipped with 27x10W VW LEDs, delivering a limitless reproduction of colours and whites. **ArcPod 27VW** is designed slim and fanless, and it's completed by a wide selection of available optics, making the **ArcPod 27VW** an incredibly flexible and versatile device for any outdoor install.

MAIN FEATURES

- Tilt adjustment and multiple lens options for fine focusing
- 27x10W VW LEDs
- LED emitters controllable in 3 linear sections
- Compact form factor and fanless

TECHNICAL SPECIFICATION

LIGHT SOURCE

- Source: 27x10 W Warm White + Cold White LEDs
- Luminous flux: (15°) 16'036 lm; (15°+20°) 14'121 lm; (15°+30°) 13'204 lm; (15°+40°) 14'030 lm; (15°+60°) 13'811 lm; (15°+80°) 12'534 lm; (15°+10°x60°) 26'122 lm; (15°+30°x60°) 16'195 @full
- Lux: (15°) 13'390 lx; (15°+20°) 2'353 lx; (15°+30°) 1'415 lx; (15°+40°) 743 lx; (15°+60°) 492 lx; (15°+80°) 331 lx; (15°+10°x60°) 1'989 lx; (15°+30°x60°) 963 lx @5 m full
- CRI: 81,9 @ WW; 84 @ CW; 86,7 @ full
- Source life expectancy: > 50.000 hrs (L70B10 @Ta 25° C / 77° F)

OPTICS

- Additional optics: see available accessories
- Other: barn doors not included

COLOUR SYSTEM

- Colour mixing: tunable white
- CCT: CCT control through dedicated DMX channel
- White presets: 2.700 K ~ 6.500 K
- Colour wheel: virtual colour wheel with presets
- Macros: several pre-built macros with adjustable speed

DYNAMIC EFFECTS

- FX generator: up to 3 linear controllable sections
- Static mode: selection of static colour

BODY

- Tilt angle: 0 ~ 130 ° with manual regulation
- Body: sturdy die-cast aluminium body
- Body colour: RAL 7012

CONTROL

- Protocols: DMX512, RDM
- DMX channels: 1 / 2 / 3 / 5 / 11 / 11 channel
- Pixel control: up to 3 linear controllable sections
- RDM: RDM for remote monitoring and settings

- Display: user interface through DATAMASTER external coder (not included)
- Firmware upgrade: yes, via USB - DMX interface (UPBOXPRO/UPBOX1) not included
- Master/Slave: for synchronised operation of more units linked in a chain

ELECTRONICS

- Dimmer: linear 0 ~ 100% electronic dimmer
- Operating temperature: -20° C / +45° C (-4° F / +113° F)
- LED Control: flicker free operation
- Selectable PWM: 600 ~ 25.000 Hz

ELECTRICAL

- Mains power supply: 100-240V - 50/60Hz
- Max power consumption: 270 W
- Output (at 230V): 6 units on a single power line
- Power factor: 0,98
- Inrush current: 110VAC/6.75A, 230VAC/10.25A

PHYSICAL

- IP rating: 66 for outdoor installations
- IK rating: 08
- Cooling: passive cooling and fan-free
- Adaptors: XLR and BARE END 16A adaptors included
- Signal connection: 1,8 m moulded IP signal IN connector
- Power connection: 1,8 m moulded IP power IN/OUT connectors
- Dimensions (WxHxD): 455x258x83 mm
- Weight: 9 kg

CERTIFICATIONS / APPROVALS

- Certifications / Approvals: CE, UKCA, RCM, cTUVus, FCC

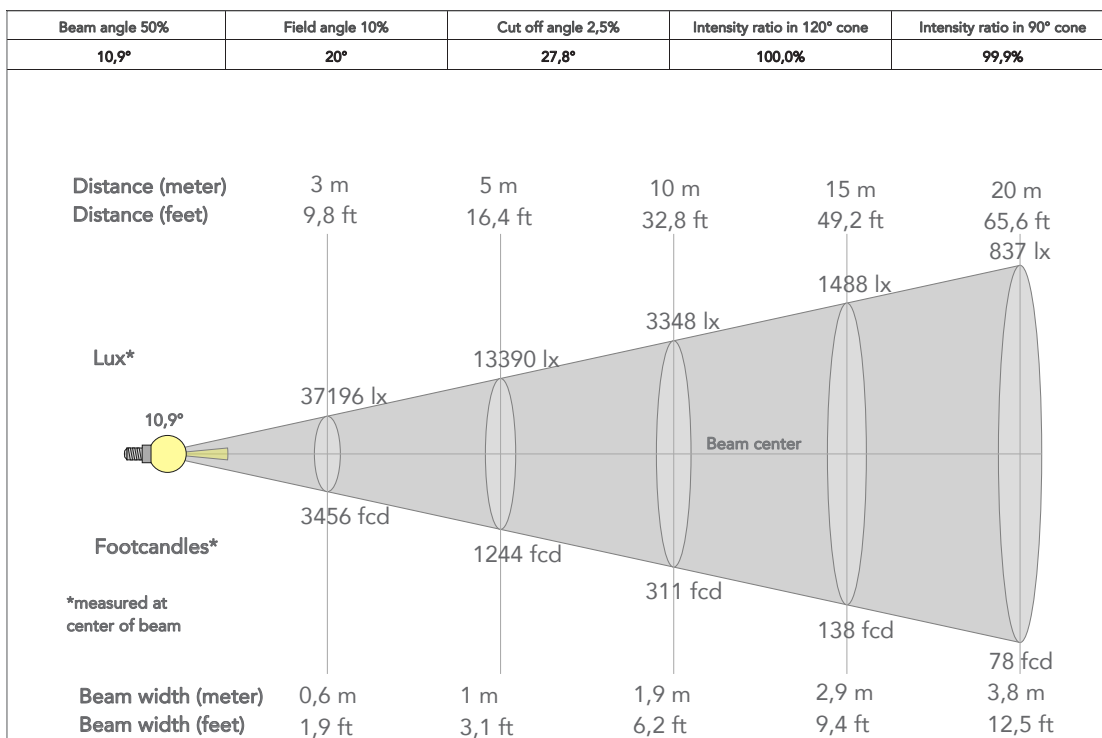
ACCESSORIES & RELATED PRODUCTS

▪ AWEXDC1221ADP	Signal adapter kit from AWEXDC1 series to AWEXDC2 series and vice versa
▪ AWEXAC12ADP	Power adapter from AWEXAC1 cable series to AWEXAC2 cable series
▪ C6002B	Slim aluminum clamp, 200kg loading, 48-51mm tubes, M10 bolt, Black
▪ FCLA27Q	Flight case for 5 pcs of ARCP0D27Q
▪ RSR0630B	Steel security cable for hanging bodies, inox steel shackle, L=60 cm, black
▪ A27QFILTER20 30/40/60/80	20°/30°/40°/60°/80° symmetric light diffusion filter for ARCP0D27Q, 11,4x33,7 cm
▪ A27QFILTER1090/1060 3060/9010/6010/6030	10°x90°/10°x60°/30°x60°/90°x10°/60°x10°/60°x30° asymmetric light diffusion filter for ARCP0D27Q, 11,4x33,7 cm

▪ S27QLENS10/15/25/45	10°/15°/25°/45° lens for SOLAR27Q, ARCP0D27Q, SOLAR48Q, ARCP0D48Q, ARCP0D15Q and ARCP0D96Q
▪ S27QBD	Black barn door 4 directional flaps to adjust the light beam, SOLAR27Q, ARCP0D27Q
▪ DATAMASTER	RDM/DMX tool, cable tester, 5p XLR connectors, pouch, charging cable, XLR adapters
▪ AWEXAC1L03/05/10/20	IP67 power extension cable for outdoor architectural projectors, L.03/05/10/20 m
▪ AWEXDC1L03/05/10/20	IP67 DMX extension cable for outdoor architectural projectors, L.03/05/10/20 m
▪ UPBOX1U	Firmware uploader kit, USB IN, 3pin XLR DMX OUT, USB OUT

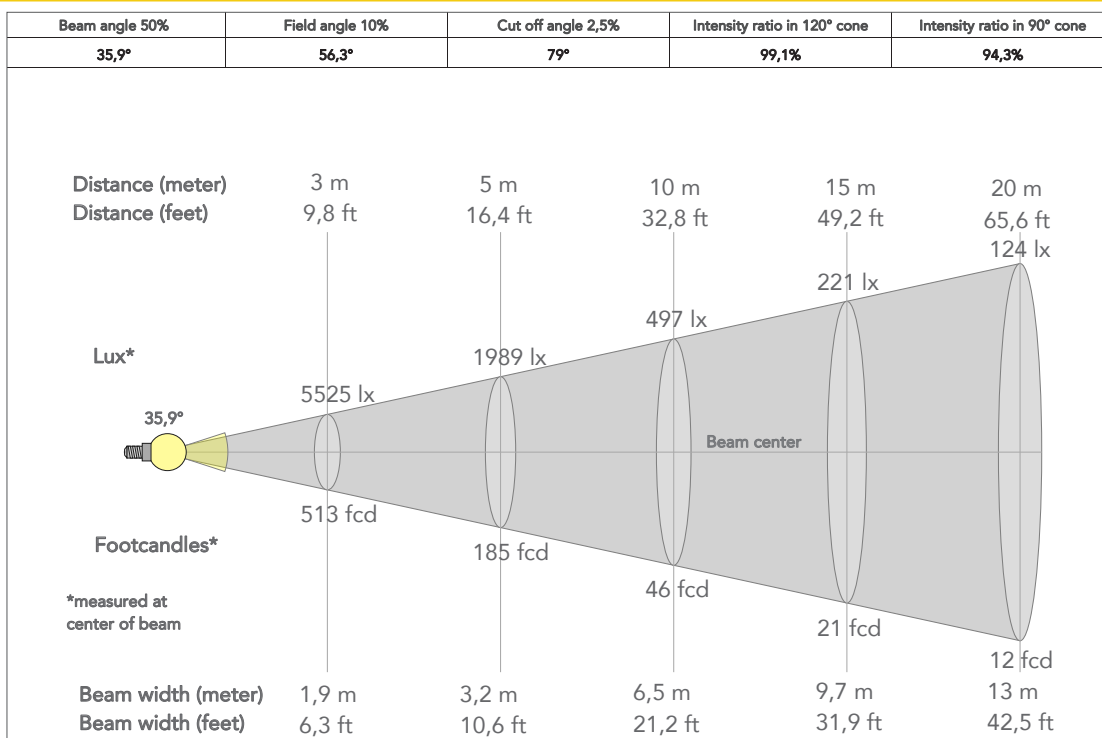
PRESET FULL ON

Beam angle 50%:15°

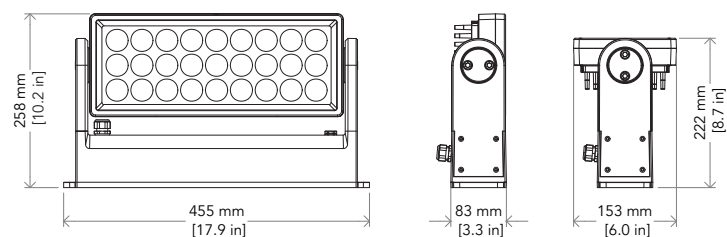


PRESET FULL ON (10°x60°)

Beam angle 50%: 15°



TECHNICAL DRAWINGS



CERTIFICATIONS / APPROVALS



Conforms to UL STD. 1573
Certified to CSA STD: C22.2 NO. 166

Visit our website
for specifications and
tech documentations

