

EclProfile FWIP

Waterproofed high quality Full White LED ellipsoidal available in Tungsten and Daylight versions



EclProfile FWIP is the IP Full White version of the new generation of Ecl Profile LED ellipsoidals, and it is available in the TU (tungsten) and DY (daylight) source variants. The **EclProfile** FWIP has been engineered in the same housing and optical design of the colour mixing versions and for those users who require higher brightness and quality on a specific white point, offering a superior evenness and crisp focus of the new **EclProfile** range, or simply prefer to operate LED fixtures in a classical way. The LED source for both versions has been selected to achieve the finest quality of whites, having high scores of CRI, R9 and TM30 and being ideal for applications like corporate events, advertising, exhibitions, among others.

MAIN FEATURES

- IP rated for exterior applications
- Rotating gobo IP65 (optional)
- 3.200 K (TU) and 5.600 K (DY) versions available
- High lumen output and superior quality of whites (high CRI, TLCI, TM30)
- Silent operation and compatible with industry standard accessories

VERSIONS

Code	Housing	CCT	CRI
ECLFWIPTUBK	Black	3.200 K	>98 Ra
ECLFWIPDYBK	Black	5.600 K	>97 Ra
ECLFWIPTUWH	White	3.200 K	>98 Ra
ECLFWIPDYWH	White	5.600 K	>97 Ra

TECHNICAL SPECIFICATION

LIGHT SOURCE

- Source: 91x3 W high-power white LED
- CCT: (TU) 3.200 K - (DY) 5.600
- Luminous flux: (TU) 5°: 6'662 - 10°: 8'005 - 14°: 7'283 lm - 19°: 8'704 lm - 26°: 8'944 lm - 36°: 8'996 lm - 50°: 8'286 lm - 70°: 9'670 @full
- Luminous flux: (DY) 5°: 7'231 - 10°: 8'828 - 14°: 8'061 lm - 19°: 7'664 lm - 26°: 9'826 lm - 36°: 9'707 lm - 50°: 9'017 lm - 70°: 11'708 lm @full
- Lux: (TU) 5°: 30'529 - 10°: 14'813 - 14°: 7'197 lx - 19°: 4'218 lx - 26°: 2'459 lx - 36°: 1'323 lx - 50°: 680 lx - 70°: 419 lx @5 m full
- Lux: (DY) 5°: 35'955 - 10°: 16'083 - 14°: 7'894 lx - 19°: 4'626 lx - 26°: 2'722 lx - 36°: 1'450 lx - 50°: 766 lx - 70°: 494 lx @5 m full
- CRI: (TU) >98; (DY) >97
- R9: (TU) >91; (DY) >97
- TLCI: (TU) >98; (DY) >98
- TM30 Rf: (TU) >94; (DY) >91
- TM30 Rg: (TU) >99; (DY) >99
- Source life expectancy: > 50.000 h

OPTICS

- Beam angle: optional 5° / 10° / 14° / 19° / 26° / 36° / 50° / 70° / 90° zoom 15°-30° / zoom 25°-50° °
- Lens type: HD anti-reflection lenses with achromatic coating
- Focus: manual
- Other: see available accessories

COLOUR SYSTEM

- Colour mixing: static white

DYNAMIC EFFECTS

- Rotating gobos: optional, see available accessories
- Gobo size: B, outer: 86 mm - image: 64,5 mm - thickness: 1,1 mm
- Static mode: selection of static dimmer
- Manual mode: manual adjustment of dimmer and strobe
- Auto mode: built-in programs with execution speed adjustment
- Special features: HIGH mode, AUTO mode and SILENT mode fan management

BODY

- Body: sturdy die-cast aluminium body
- Body colour: black

CONTROL

- Protocols: DMX512, RDM
- DMX channels: 2 / 3 / 4 / 5 channel
- RDM: RDM for remote monitoring and settings
- Display: Graphic User Interface
- Firmware upgrade: yes, via USB - DMX interface (UPBOXPRO/UPBOX2) not included
- Master/Slave: for synchronised operation of more units linked in a chain

ELECTRONICS

- Dimmer: linear 0 ~ 100% electronic dimmer
- Strobe / shutter: 1 - 25 Hz, electronic
- Operating temperature: -10° ~ +45°
- LED Control: flicker free operation
- Selectable PWM: 600 ~ 25.000 Hz

ELECTRICAL

- Mains power supply: 100-240V - 50/60Hz
- Max power consumption: 264 W
- Standby power: 10W
- Output (at 230V): 10 units on a single power line
- Power factor: 0,97
- Inrush current: <30A @115VAC / <50A @230VAC

PHYSICAL

- IP rating: 65 for temporary outdoor application, not for fixed installations
- Cooling: low noise fan
- Suspension and fixing: bracket for hanging and positioning
- Signal connection: Seetronic XLR 5p IN/OUT connectors
- Power connection: Seetronic powerCON TRUE IP65 IN/OUT
- Dimensions (WxHxD): 324x540x660 mm
- Weight: 10 kg

CERTIFICATIONS / APPROVALS

- Certifications / Approvals: CE, UKCA, RCM, cTUVus, FCC

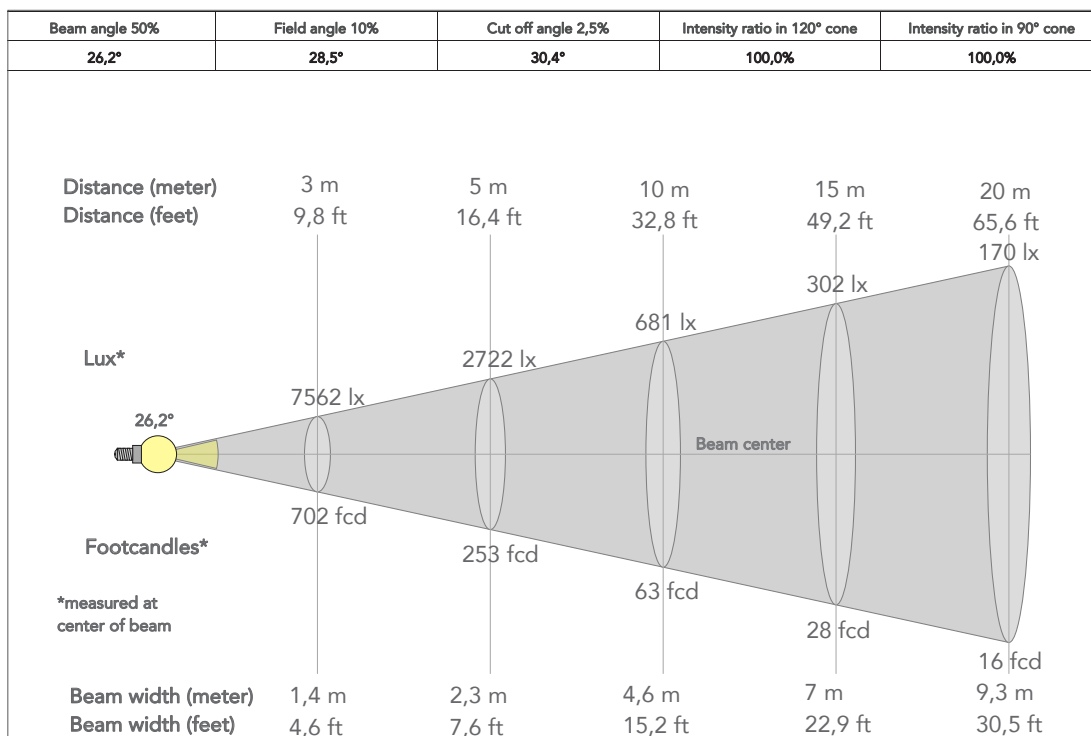
ACCESSORIES & RELATED PRODUCTS

- ECLPRIPROGBO1BK/WH Rotating gobo assembly for ECL Profile fixtures, black and white housing
- FCLECLPRIP Flightcase to contain 6 pcs ECLFWIP / ECLCTPLUS with lenses 19°, 26°, 36°, 50°
- FCLECLPRLZ Flightcase to contain 8 ECLPRLZ zoom lenses
- ECLPRPOYO Pole operated yoke for ECL Profile fixtures
- ECLLB05/10BK 5°/10° lens barrel for Ecl Profile fixtures, filterframe included, black housing
- ECLPRL05/10/14 19/26/36/50/70/90BK 5°/10°/14°/19°/26°/36°/50°/70°/90° PRL lens barrel for EclProfile fixtures, black housing
- ECLPRLZ1530/2550BK Zoom 15°-30°/25°-50° PRL lens barrel for EclProfile fixtures, black housing
- ECLPRTPG Gel filter frame for ECL Profile PRL lens barrel, comp. with 19°, 26°, 36° and 50°
- ECLPRGHA Gobo holder for ECL Profile fixtures, A size
- ECLPRGH Gobo holder for ECL Profile fixtures
- ECLPRIRIS Iris accessory for ECL Profile fixtures
- ECLPRSEF1 Soft edge filter and holder kit for ECL Profile fixtures

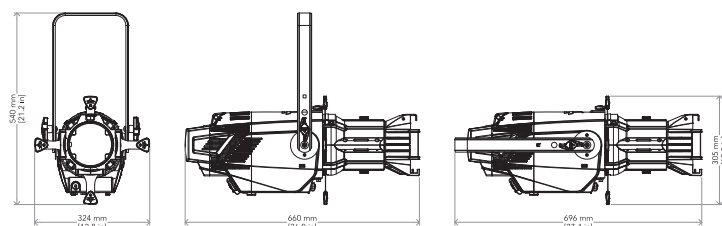
- ECLLZLLKA Hexagonal head screw, to adapt and mount ECLLZ lenses on ECLCTPLUS and ECLFS
- SPGM12 28mm spigot for fixtures, M12 bolt
- SPGM10 28mm spigot for fixtures, M10 bolt
- IPTESTBOX Portable vacuum and pressure tester for ProLights IP fixtures
- 9313FXWL03 Ass. 3x2.5mm TH07 cable, 16A 3p 230V CEE plug, SETSAC3FX socket, L.3 m
- RSR0630B Steel security cable for hanging bodies, inox steel shackle, L=60 cm, black
- C6002B Slim aluminum clamp, 200kg loading, 48-51mm tubes, M10 bolt, Black
- C6040B Aluminum clamp for 28mm spigot, 200kg load, 48-51mm tubes, black
- 938225L03 3x2.5mm TH07 Cable, 16A SETSAC3MX, 16A SETSAC3FX, L. 3m
- INF53415L03 Dmx cable HC5340. SETMC5MXXB XLR 5p->SETMC5FXXB XLR (f) 5p L.3m

PRESET FULL ON (DY)

Beam angle 50%: 26°



TECHICAL DRAWINGS



CERTIFICATIONS / APPROVALS



Conforms to UL STD. 1573
Certified to CSA STD: C22.2 NO. 166

Visit our website
for specifications and
tech documentations

