

# Astra Beam260IP

The universal moving beam,  
whatever the application

## Astra Beam260IP

IP65 moving beam light with a 260W PRO long life lamp (6.000 hours)

ORDER CODE: **ASTRABEAM260IP**



  
**OSRAM**  
260W PRO  
OSRAM SIRIUS  
HRI Lamp


  
Motorised  
focus

  
One colour  
wheel  
with 13 filters

  
Two CTO filters on  
colour wheel  
(2.500 K and 3.200 K)

  
One CTB filter  
on colour wheel  
(10.000 K)

  
One static  
gobo wheel  
with 15 images

  
8f circular and 6f  
linear indexable  
prisms

  
16-bit control:  
Pan, Tilt,  
Dimmer, Focus

  
RDM - DMX -  
WDMX - SACN  
ART-NET

  
New IP65 body  
elements proof  
(water & dust)

**Astra Beam260IP** is a compact outdoor IP65 beam moving head with a long lamp life source, engineered to produce a sharp and parallel beam of light with a boosted light output, thanks to its brand new 260W Osram SIRIUS HRI PRO arc lamp. **Astra Beam260IP** is smaller, brighter and faster than any other IP pure beamlight on the market, and when compared to indoor alternatives it requires less maintenance time and extra costs, due to the sealed housing and outstanding long lamp life (6.000 hours). In addition, with its compact size and at an attractive price point, this luminaire is ideal even for indoor applications.

## TECHNICAL SPECIFICATION

### LIGHT SOURCE

- Source: 260 W PRO OSRAM SIRIUS HRI Lamp
- CCT: 7.800 K
- Lux: 1'984'000 lx @ 5 m
- Source life expectancy: 6.000 h

### OPTICS

- Beam angle: 2 °
- Lens diameter: 140 mm
- Lens type: HD anti-reflection lenses with achromatic coating
- Focus: motorised

### COLOUR SYSTEM

- CCT: on wheel 2.500 K and 3.200 K + CTB
- Colour wheel: 10 colour filters

### DYNAMIC EFFECTS

- Control Resolution: 16-bit dimmer
- Fixed gobos: 15 fixed gobos + open
- FX generator: 2 prisms overlap for spectacular aerial effects
- Circular prism: 8 f with bi-directional rotation, indexing
- Linear prism: 6 f with bi-directional rotation, indexing
- Frost: linear 0 - 100% frost filter

### BODY

- Hardware on-board: sockets for quick-Lock Omega bracket (clamp not included)
- Pan angle: 540 °
- Tilt angle: 230 °
- Pan/Tilt resolution: 16 bit
- Feedback: automatic repositioning after accidental movement
- Body: weatherproof IP65 construction
- Body colour: RAL 9004

### CONTROL

- Protocols: DMX512, RDM, Art-Net, sACN, W-DMX
- DMX channels: 17 channel
- Wireless Control: included, Wireless Solution transceiver
- RDM: RDM for remote monitoring and settings
- Display: LCD high resolution colour display with autoflip
- Firmware upgrade: via menu with internal memory or via USB - DMX interface (UPBOX2) not included

### ELECTRONICS

- Dimmer: linear 0 ~ 100% mechanical dimmer
- Strobe / shutter: 1 - 28 flash(s), mechanical
- Display battery: self-charging battery backup
- Operating temperature: -20° ~ +45°

### ELECTRICAL

- Mains power supply: 100-240V - 50/60Hz
- Max power consumption: 345 W
- Power factor: 0,96

### PHYSICAL

- IP rating: 65 (\*)
- Cooling: forced air with fan
- Suspension and fixing: any position with quick-lock omega brackets
- Signal connection: Seetronic XLR 5p IN/OUT connectors
- Power connection: Seetronic powerCON TRUE IP65 IN
- Dimensions (WxHxD): 385x603x271 mm
- Weight: 28,6 kg

(\*) NOTE: Suitable for permanent outdoor use, provided installation and maintenance cycles by qualified technicians are carried.

### CERTIFICATIONS / APPROVALS

- Certifications / Approvals: CE, UKCA, RCM, cTUVus, FCC

# Astra Beam260IP

A new generation  
of source and optics

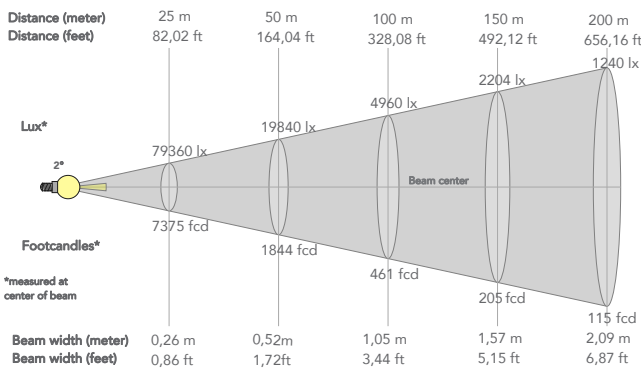
## Astra Beam260IP

### PHOTOMETRICS

#### PRESET NATIVE FULL ON

Beam angle 50%: 2°

| Beam angle 50% | Field angle 10% | Cut off angle 2,5% | Intensity ratio in 120° cone | Intensity ratio in 90° cone |
|----------------|-----------------|--------------------|------------------------------|-----------------------------|
| 0,6°           | 1,4°            | 1,9°               | 67,0%                        | 54,4%                       |



#### BEAM INTENSITIES AND WIDTHS

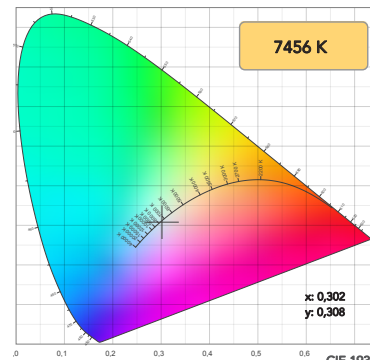
| Full On (Open) | 10     | 20     | 30    | 40     | 50     | 60     | 70     | 80     | 90     | 100    |
|----------------|--------|--------|-------|--------|--------|--------|--------|--------|--------|--------|
| Distance (m)   | 32.81  | 65.62  | 98.42 | 131.23 | 164.04 | 196.85 | 229.66 | 262.46 | 295.27 | 328.08 |
| Distance (ft)  | 32.81  | 65.62  | 98.42 | 131.23 | 164.04 | 196.85 | 229.66 | 262.46 | 295.27 | 328.08 |
| lux center     | 496000 | 124000 | 55111 | 31000  | 19840  | 13778  | 10122  | 7750   | 6123   | 4960   |
| Foot candles   | 46097  | 11524  | 5122  | 2881   | 1844   | 1280   | 941    | 720    | 569    | 461    |
| Diameter cm    | 35     | 70     | 105   | 140    | 175    | 209    | 244    | 279    | 314    | 349    |
| Diameter ft    | 1.15   | 2.29   | 3.44  | 4.58   | 5.73   | 6.87   | 8.02   | 9.16   | 10.31  | 11.45  |

#### BEAM DETAILS

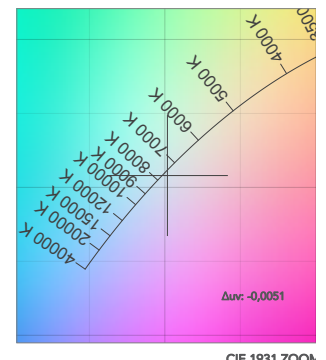
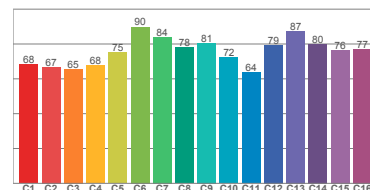
##### ALL COLOUR PRESETS

|                   |               |        |       |       |        |        |        |        |        |        |        |
|-------------------|---------------|--------|-------|-------|--------|--------|--------|--------|--------|--------|--------|
| <b>Dark Red</b>   | Distance (m)  | 10     | 20    | 30    | 40     | 50     | 60     | 70     | 80     | 90     | 100    |
|                   | Distance (ft) | 32.81  | 65.62 | 98.42 | 131.23 | 164.04 | 196.85 | 229.66 | 262.46 | 295.27 | 328.08 |
|                   | lux center    | 11780  | 2945  | 1309  | 736    | 471    | 327    | 240    | 184    | 145    | 118    |
|                   | Foot candles  | 1095   | 274   | 122   | 68     | 44     | 30     | 22     | 17     | 14     | 11     |
|                   | Diameter cm   | 35     | 70    | 105   | 140    | 175    | 209    | 244    | 279    | 314    | 349    |
|                   | Diameter ft   | 1.15   | 2.29  | 3.44  | 4.58   | 5.73   | 6.87   | 8.02   | 9.16   | 10.31  | 11.45  |
| <b>Orange</b>     | Distance (m)  | 10     | 20    | 30    | 40     | 50     | 60     | 70     | 80     | 90     | 100    |
|                   | Distance (ft) | 32.81  | 65.62 | 98.42 | 131.23 | 164.04 | 196.85 | 229.66 | 262.46 | 295.27 | 328.08 |
|                   | lux center    | 140912 | 35228 | 15657 | 8807   | 5636   | 3914   | 2876   | 2202   | 1740   | 1409   |
|                   | Foot candles  | 13096  | 3274  | 1455  | 818    | 524    | 364    | 267    | 205    | 162    | 131    |
|                   | Diameter cm   | 35     | 70    | 105   | 140    | 175    | 209    | 244    | 279    | 314    | 349    |
|                   | Diameter ft   | 1.15   | 2.29  | 3.44  | 4.58   | 5.73   | 6.87   | 8.02   | 9.16   | 10.31  | 11.45  |
| <b>Aquamarine</b> | Distance (m)  | 10     | 20    | 30    | 40     | 50     | 60     | 70     | 80     | 90     | 100    |
|                   | Distance (ft) | 32.81  | 65.62 | 98.42 | 131.23 | 164.04 | 196.85 | 229.66 | 262.46 | 295.27 | 328.08 |
|                   | lux center    | 42016  | 10504 | 4668  | 2626   | 1681   | 1167   | 857    | 657    | 519    | 420    |
|                   | Foot candles  | 3905   | 976   | 434   | 244    | 156    | 108    | 80     | 61     | 48     | 39     |
|                   | Diameter cm   | 35     | 70    | 105   | 140    | 175    | 209    | 244    | 279    | 314    | 349    |
|                   | Diameter ft   | 1.15   | 2.29  | 3.44  | 4.58   | 5.73   | 6.87   | 8.02   | 9.16   | 10.31  | 11.45  |
| <b>Deep Green</b> | Distance (m)  | 10     | 20    | 30    | 40     | 50     | 60     | 70     | 80     | 90     | 100    |
|                   | Distance (ft) | 32.81  | 65.62 | 98.42 | 131.23 | 164.04 | 196.85 | 229.66 | 262.46 | 295.27 | 328.08 |
|                   | lux center    | 91540  | 22885 | 10171 | 5721   | 3662   | 2543   | 1868   | 1430   | 1130   | 915    |
|                   | Foot candles  | 8507   | 2127  | 945   | 532    | 340    | 236    | 174    | 133    | 105    | 85     |
|                   | Diameter cm   | 35     | 70    | 105   | 140    | 175    | 209    | 244    | 279    | 314    | 349    |
|                   | Diameter ft   | 1.15   | 2.29  | 3.44  | 4.58   | 5.73   | 6.87   | 8.02   | 9.16   | 10.31  | 11.45  |
| <b>Lighter</b>    | Distance (m)  | 10     | 20    | 30    | 40     | 50     | 60     | 70     | 80     | 90     | 100    |
|                   | Distance (ft) | 32.81  | 65.62 | 98.42 | 131.23 | 164.04 | 196.85 | 229.66 | 262.46 | 295.27 | 328.08 |
|                   | lux center    | 83940  | 20985 | 9327  | 5246   | 3358   | 2332   | 1713   | 1312   | 1036   | 839    |
|                   | Foot candles  | 7801   | 1950  | 867   | 488    | 312    | 217    | 159    | 122    | 96     | 78     |
|                   | Diameter cm   | 35     | 70    | 105   | 140    | 175    | 209    | 244    | 279    | 314    | 349    |
|                   | Diameter ft   | 1.15   | 2.29  | 3.44  | 4.58   | 5.73   | 6.87   | 8.02   | 9.16   | 10.31  | 11.45  |
| <b>Pink</b>       | Distance (m)  | 10     | 20    | 30    | 40     | 50     | 60     | 70     | 80     | 90     | 100    |
|                   | Distance (ft) | 32.81  | 65.62 | 98.42 | 131.23 | 164.04 | 196.85 | 229.66 | 262.46 | 295.27 | 328.08 |
|                   | lux center    | 208760 | 52190 | 23196 | 13048  | 8350   | 5799   | 4260   | 3262   | 2577   | 2088   |
|                   | Foot candles  | 19401  | 4850  | 2156  | 1213   | 776    | 539    | 396    | 303    | 240    | 194    |
|                   | Diameter cm   | 35     | 70    | 105   | 140    | 175    | 209    | 244    | 279    | 314    | 349    |
|                   | Diameter ft   | 1.15   | 2.29  | 3.44  | 4.58   | 5.73   | 6.87   | 8.02   | 9.16   | 10.31  | 11.45  |

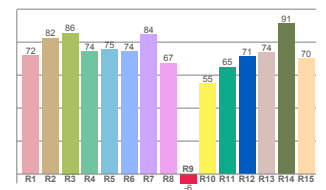
#### COLOUR DETAILS



TM30: 75,7



CRI: 76,9 (R1-R8)



#### BEAM DETAILS

##### ALL COLOUR PRESETS

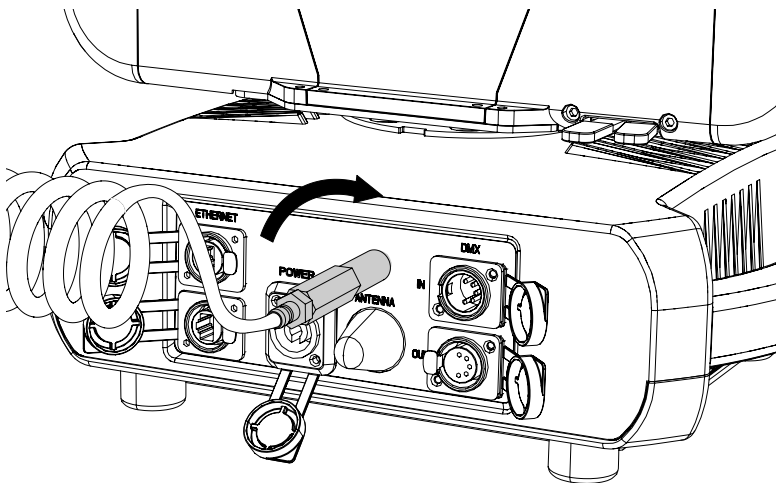
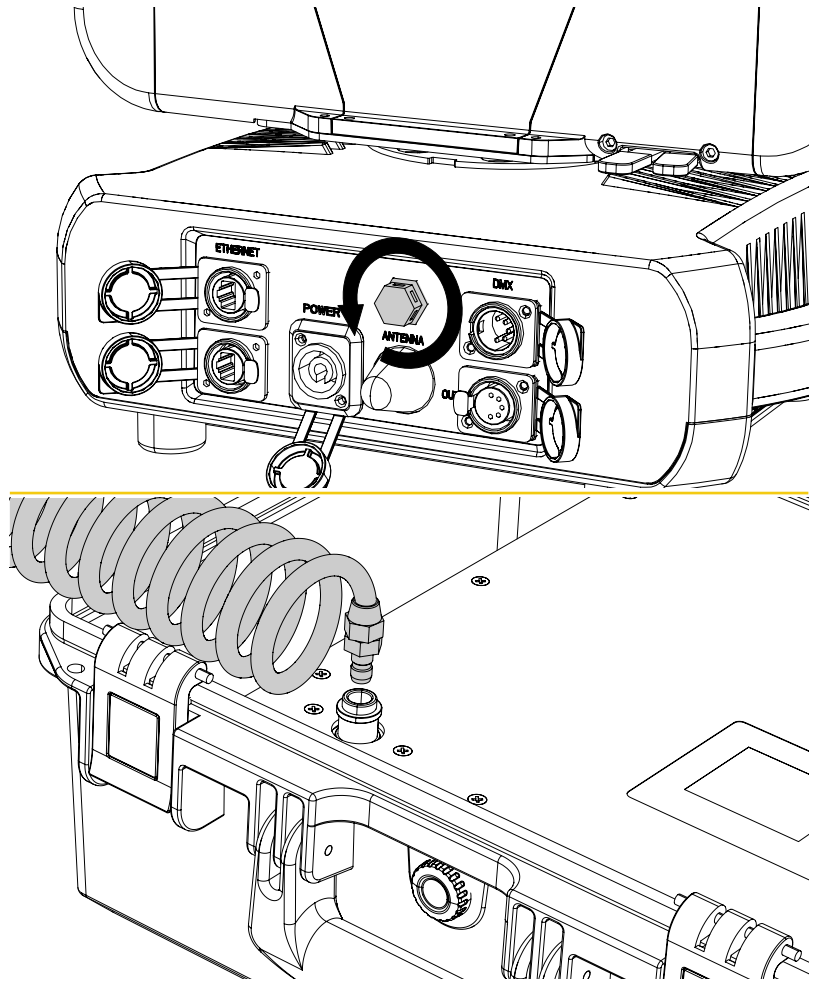
|                |               |        |       |       |        |        |        |        |        |        |        |
|----------------|---------------|--------|-------|-------|--------|--------|--------|--------|--------|--------|--------|
| <b>Yellow</b>  | Distance (m)  | 10     | 20    | 30    | 40     | 50     | 60     | 70     | 80     | 90     | 100    |
|                | Distance (ft) | 32.81  | 65.62 | 98.42 | 131.23 | 164.04 | 196.85 | 229.66 | 262.46 | 295.27 | 328.08 |
|                | lux center    | 263660 | 65915 | 29296 | 16479  | 10546  | 7324   | 5381   | 4120   | 3255   | 2637   |
|                | Foot candles  | 24504  | 6126  | 2723  | 1531   | 980    | 681    | 500    | 383    | 303    | 245    |
|                | Diameter cm   | 35     | 70    | 105   | 140    | 175    | 209    | 244    | 279    | 314    | 349    |
|                | Diameter ft   | 1.15   | 2.29  | 3.44  | 4.58   | 5.73   | 6.87   | 8.02   | 9.16   | 10.31  | 11.45  |
| <b>Magenta</b> | Distance (m)  | 10     | 20    | 30    | 40     | 50     | 60     | 70     | 80     | 90     | 100    |
|                | Distance (ft) | 32.81  | 65.62 | 98.42 | 131.23 | 164.04 | 196.85 | 229.66 | 262.46 | 295.27 | 328.08 |
|                | lux center    | 45892  | 11473 | 5099  | 2868   | 1836   | 1275   | 937    | 717    | 567    | 459    |
|                | Foot candles  | 4265   | 1066  | 474   | 267    | 171    | 118    | 87     | 67     | 53     | 43     |
|                | Diameter cm   | 35     | 70    | 105   | 140    | 175    | 209    | 244    | 279    | 314    | 349    |
|                | Diameter ft   | 1.15   | 2.29  | 3.44  | 4.58   | 5.73   | 6.87   | 8.02   | 9.16   | 10.31  | 11.45  |
| <b>Cyan</b>    | Distance (m)  | 10     | 20    | 30    | 40     | 50     | 60     | 70     | 80     | 90     | 100    |
|                | Distance (ft) | 32.81  | 65.62 | 98.42 | 131.23 | 164.04 | 196.85 | 229.66 | 262.46 | 295.27 | 328.08 |
|                | lux center    | 119748 | 29937 | 13305 | 7484   | 4790   | 3326   | 2444   | 1871   | 1478   | 1197   |
|                | Foot candles  | 11129  | 2782  | 1237  | 696    | 445    | 309    | 227    | 174    | 137    | 111    |
|                | Diameter cm   | 35     | 70    | 105   | 140    | 175    | 209    | 244    | 279    | 314    | 349    |
|                | Diameter ft   | 1.15   | 2.29  | 3.44  | 4.58   | 5.73   | 6.87   | 8.02   | 9.16   | 10.31  | 11.45  |
| <b>CT01</b>    | Distance (m)  | 10     | 20    | 30    | 40     | 50     | 60     | 70     | 80     | 90     | 100    |
|                | Distance (ft) | 32.81  | 65.62 | 98.42 | 131.23 | 164.04 | 196.85 | 229.66 | 262.46 | 295.27 | 328.08 |
|                | lux center    | 211916 | 52979 | 23546 | 13245  | 8477   | 5887   | 4325   | 3311   | 2616   | 2119   |
|                | Foot candles  | 19595  | 4924  | 2188  | 1231   | 788    | 547    | 402    | 308    | 243    | 197    |
|                | Diameter cm   | 35     | 70    | 105   | 140    | 175    | 209    | 244    | 279    | 314    | 349    |
|                | Diameter ft   | 1.15   | 2.29  | 3.44  | 4.58   | 5.73   | 6.87   | 8.02   | 9.16   | 10.31  | 11.45  |
| <b>CT02</b>    | Distance (m)  | 10     | 20    | 30    | 40     | 50     | 60     | 70     | 80     | 90     | 100    |
|                | Distance (ft) | 32.81  | 65.62 | 98.42 | 131.23 | 164.04 | 196.85 | 229.66 | 262.46 | 295.27 | 328.08 |
|                | lux center    | 211332 | 52833 | 23481 | 13208  | 8453   | 5870   | 4313   | 3302   | 2609   | 2113   |
|                | Foot candles  | 19641  | 4910  | 2182  | 1228   | 786    | 545    | 401    | 307    | 242    | 196    |
|                | Diameter cm   | 35     | 70    | 105   | 140    | 175    | 209    | 244    | 279    | 314    | 349    |
|                | Diameter ft   | 1.15   | 2.29  | 3.44  | 4.58   | 5.73   | 6.87   | 8.02   | 9.16   | 10.31  | 11.45  |
| <b>CTB</b>     | Distance (m)  | 10     | 20    | 30    | 40     | 50     | 60     | 70     | 80     | 90     | 100    |
|                | Distance (ft) | 32.81  | 65.62 | 98.42 | 131.23 | 164.04 | 196.85 | 229.66 | 262.46 | 295.27 | 328.08 |
|                | lux center    | 230592 | 57648 | 25621 | 14412  | 9224   | 6405   | 4706   | 3603   | 2847   | 2306   |
|                | Foot candles  | 21430  | 5358  | 2381  | 1339   | 857    | 595    | 437    | 335    | 265    | 214    |
|                | Diameter cm   | 35     | 70    | 105   | 140    | 175    | 209    | 244    | 279    | 314    | 349    |
|                | Diameter ft   | 1.15   | 2.29  | 3.44  | 4.58   | 5.73   | 6.87   | 8.02   | 9.16   | 10.31  | 11.45  |



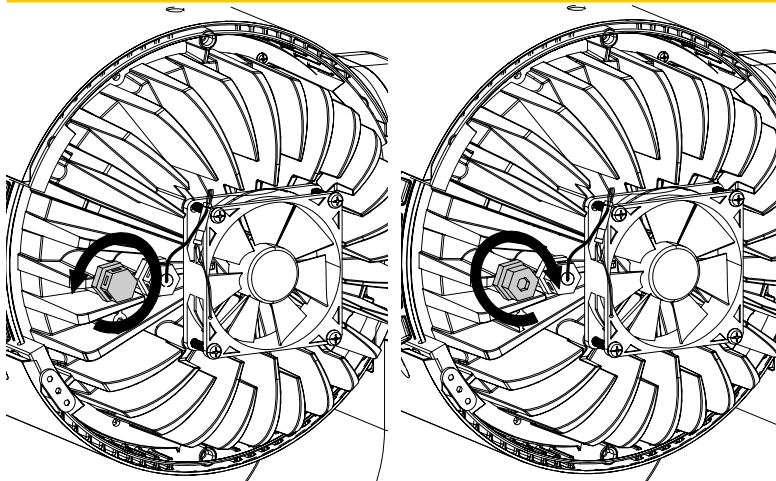
# Astra Beam260IP

THE NEW IP TEST BOX

**PROLIGHTS** has developed a portable IP tester which will be available for sale. This tool allows to test the IP rating after service for the Astra Beam260IP and any other future IP products.



You can run internal test programs for IP65 - IP66 - IP67 - IP68 . It tests both vacuum (sucking the air) and pressure (pushing air) over a certain duration according to the type of test chosen.



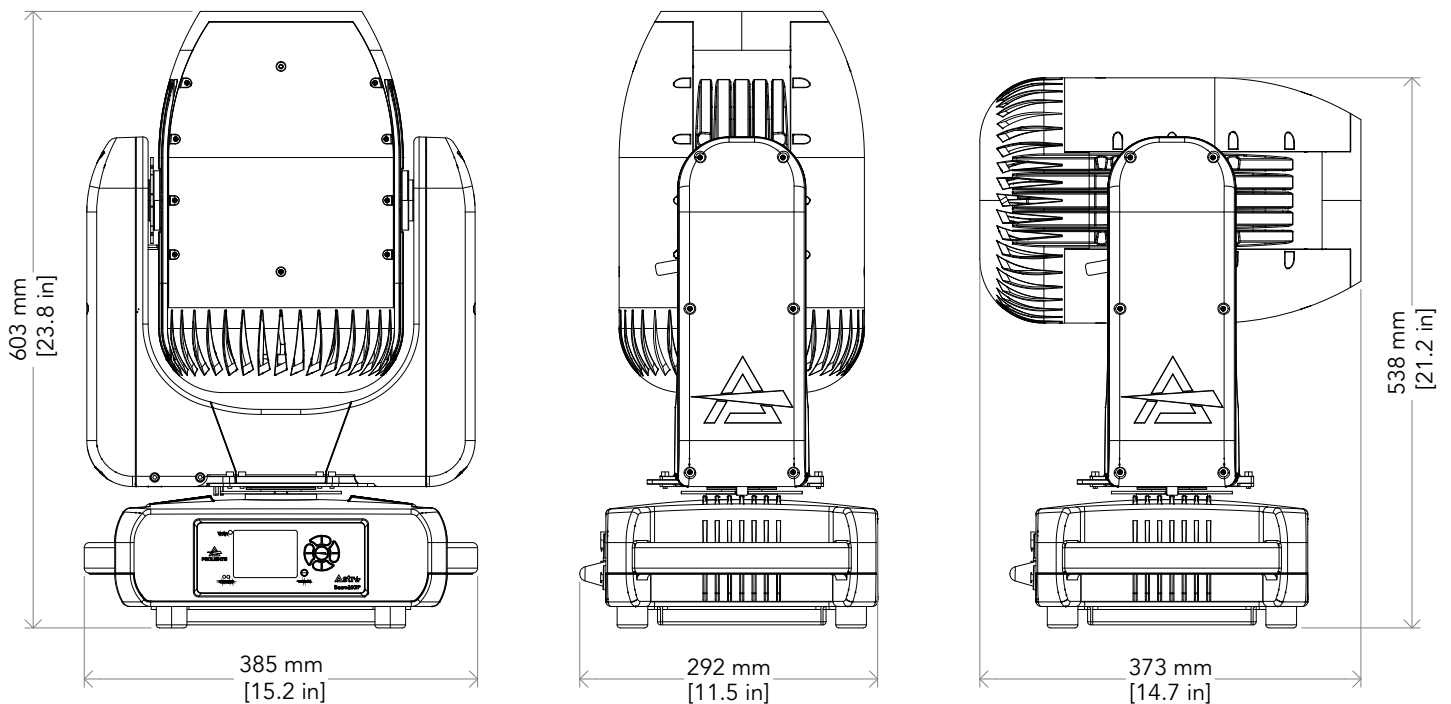
# Astra Beam260IP

## ACCESSORIES

- 9313FXWL03 Ass. 3x2.5mm TH07 cable, 16A 3p 230V CEE plug, SETSAC3FX socket, L.3 m
- 9333FXWL03 Ass. 3x2.5mm TH07 cable, SHUKO plug, SETSAC3FX socket, L.3m
- 938225L03 3x2.5mm TH07 Cable, 16A SETSAC3MX, 16A SETSAC3FX, L. 3m
- C6002B Slim aluminum clamp, 200kg loading, 48-51mm tubes, M10 bolt, Black
- FCLASTRAB260IP Flight case for 2 pcs of ASTRABEAM260IP
- INF53415L03 Dmx cable HC5340. SETMC5MXXB XLR 5p->SETMC5FXXB XLR (f) 5p L.3m
- RSR1235B Steel security cable for hanging bodies, inox steel shackle, L=120 cm, black
- WSBBF1G5 BlackBox F-1 G5 transmitter, 2,45GHz & 5.2/5,8 GHz, DMX/RDM, 512Ch
- WSBBF1G6 BlackBox F-1 G6 transrec, 512ch, 2.45GHz, DMX&RDM,Bluetooth,G3,G4,G4S, G5, CRMX
- WSBBR512G5 BlackBox R-512 G5 receiver 512Ch, 2.45GHz & 5.8GHz, DMX/RDM optional
- WSBBR512G6 BlackBox R-512 G6 receiver 512Ch, 2.45GHz,DMX&RDM,Bluetooth,G3,G4,G4S,G5,CRMX
- OSIP IP65 quick-lock omega bracket compatible with IP65 moving heads
- IPTESTBOX Portable vacuum and pressure tester for ProLights IP fixtures
- UPBOX2 Firmware uploader kit, USB IN, 3-pin XLR DMX OUT

# Astra Beam260IP

## TECHNICAL DRAWINGS



WEIGHT: 28,6 kg

## PACKAGE CONTENT

- 1 x **ASTRABEAM260IP**
- 1 x 1,5 meters power cable (SCHUKO plug - SEETRONIC IP65 power connector)
- 2 x OSIP
- 1 x Antenna
- User Manual

## CERTIFICATIONS / APPROVALS



Conforms to UL STD. 1573  
Certified to CSA STD: C22.2 NO. 166

Visit our website  
for specifications and  
tech documentations

