

EclProfile CT+

Firmware update



Update Purpose: Our fixture firmware and hardware updates are all about adding versatility, control, technical endurance and providing an easy user experience with our products. Developed from our R&D collecting feedbacks from users worldwide they expands the capabilities of our fixtures, offering refined level of performances. Make sure you always get updated to the most recent software version of your products to obtain the best results out of your fixtures and your show.

Upgrade grade: Recommended to improve functionality and fix bugs

Upgrade expected time: 0h 2min; by one person

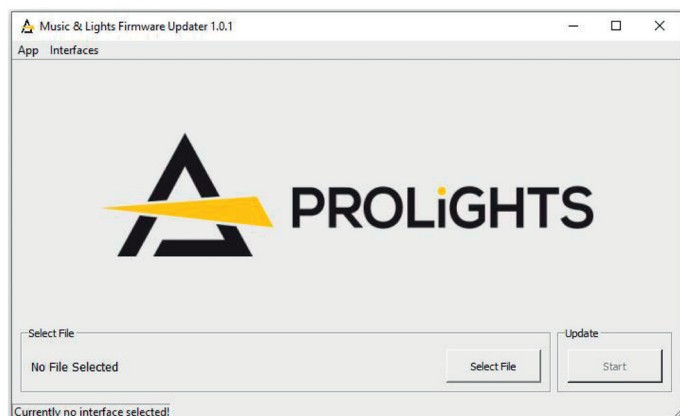
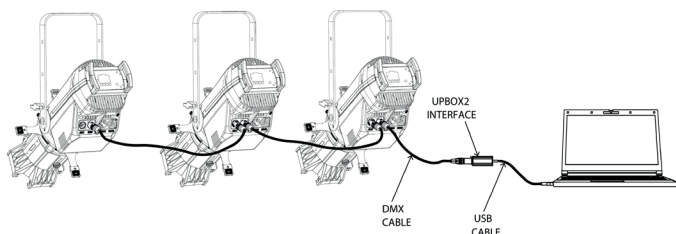
Tools required: UPBOX2, WINDOWS PC, USB and DMX cable

Contacts: support@musiclights.it
Tel. +39 0771 72 190
Contact your Area Sales Manager for parts orders and delivery

INSTRUCTIONS

IT'S POSSIBLE TO UPDATE UO TO 10 FIXTURES IN A SINGLE DMX CHAIN

È POSSIBILE AGGIORNARE FINO AD UN MASSIMO DI 10 PROIETTORI SU UNA SINGOLA CATENA DMX



MEDIA ELEMENTS

Connect the UPBOX2 to the computer through a USB cable.
Connettere l'UPBOX2 al computer tramite un cavo USB.

Please download and install UPBOX2 drivers from the following link:
Scaricare e installare i driver per UPBOX2 dal seguente link:

[UPBOX2 - 32 bit driver](#)
[UPBOX2 - 64 bit driver](#)

To install UPBOX2 drivers, please refer to the section DRIVERS INSTALLATION of the following guide.

Per installare i driver UPBOX2, fare riferimento alla sezione DRIVERS INSTALLATION della seguente guida.

[Drivers installation](#)

Download update software from the following link:
Scaricare il software per l'aggiornamento dal seguente link:

[Music & Lights Firmware Updater](#)

Download update and calibration files from the following link:
Scaricare i file per l'aggiornamento e la calibrazione dal seguente link:

[ECLCTPLUS - update files](#)

Open the software "MusicAndLights Firmware Updater"
Aprire il software "MusicAndLights Firmware Updater"

Select the .prl file for ECLCTPLUS.
Selezionare il file .prl del proiettore ECLCTPLUS.

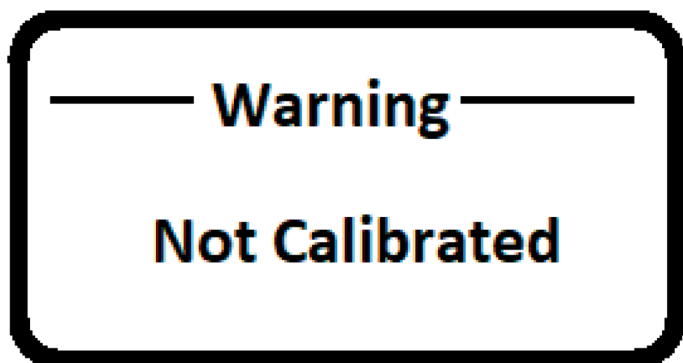
EclProfile CT+

Firmware update



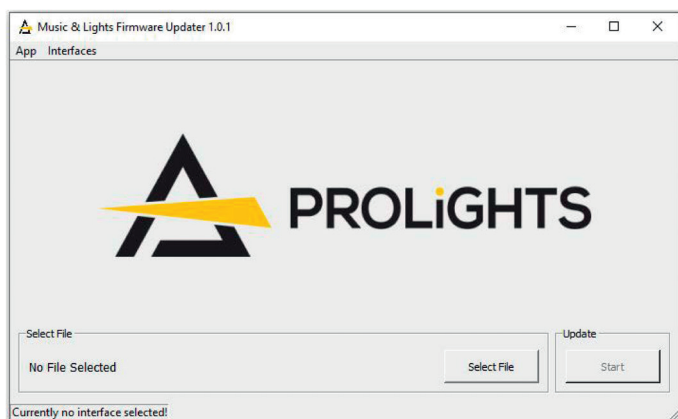
INSTRUCTIONS

MEDIA ELEMENTS



If you have this error message on the display when update process is completed, procede as following:

Se viene visualizzato questo errore sul display quando l'aggiornamento è terminato, procedere nel modo seguente:



Using the same software "MusicAndLights Firmware Updater", select the file:

- "Calibration_ECLCTPLUS.prl"

Usando lo stesso software "MusicAndLights Firmware Updater", selezionare il file

- "Calibration_ECLCTPLUS.prl"

For more infos contact support@musiclights.it

Per maggiori info contattare support@musiclights.it