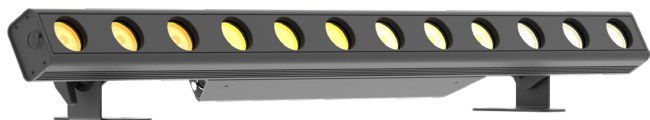


LumiPix 12QTour

12x10W RGBW/FC indoor LED batten

ORDER CODE: **LUMIPX12QTOUR**



LumiPix 12QTour is a 100 cm linear LED batten designed for professional use granting unprecedented chromatic performance. The super-slim design combined with its extreme colour precision and light output make **LumiPix 12QTour** a highly flexible and versatile solution for any kind of application or venue such as architectural, cyclorama, wall-washer, pixel effect or blinder.

MAIN FEATURES

- 12x10W RGBW/FC high-power LED
- Pixel control of every individual LED
- PowerCON IN/OUT and XLR 5p IN/OUT

TECHNICAL SPECIFICATION

LIGHT SOURCE

- Source: 12x10W RGBW LEDs
- Luminous flux: (15°) 3'657 lm - (45°) 3'630 @full
- Lux: (15°) 2'901lx @5 m full
- Lux: (45°) 325lx @5 m full
- Source life expectancy: > 50.000 h

OPTICS

- Beam angle: 22,6°
- Field angle: 39°
- Lens diameter: 45mm / 1.77"
- Additional optics: 15° (opt) - 45° (opt)
- Other: on board magnetic frost holder

COLOUR SYSTEM

- Colour mixing: RGBW / FC
- Colour wheel: virtual colour wheel with macros
- Macros: several pre-built pixel macros with adjustable speed

DYNAMIC EFFECTS

- Pixel patterns: pre-programmed dynamic and static patterns
- Static mode: selection of static colour
- Manual mode: manual adjustment of colour
- Auto mode: built-in programs with execution speed adjustment

BODY

- Hardware on-board: sockets for quick-Lock Omega bracket (clamp not included)
- Body: sturdy die-cast aluminium body
- Body colour: black

CONTROL

- Protocols: DMX512
- DMX channels: 5 / 7 / 9 / 49channel
- Pixel control: pixel2pixel control
- Display: Graphic User Interface
- Firmware upgrade: yes, via USB - DMX interface (UPBOXPRO/UPBOX1) not included
- Master/Slave: for synchronised operation of more units linked in a chain

ELECTRONICS

- Dimmer: linear 0 ~ 100% electronic dimmer
- Dimmer curves: 7 selectable dimming modes available
- Strobe / shutter: 1 - 30 Hz, electronic
- Operating temperature: -10° ~ +45°

ELECTRICAL

- Mains power supply: 100-240V - 50/60Hz
- Max power consumption: 100W
- Max power consumption (at 120V): 105W
- Output (at 230V): 30 units on a single power line
- Output (at 120V): 14 units on a single power line
- Power factor: 0,94
- Inrush current: 110VAC/11.1A, 230VAC/22A

PHYSICAL

- IP rating: 30
- Cooling: passive cooling and fan-free
- Suspension and fixing: double hanging bracket suitable for safe hanging and for floor positioning
- Signal connection: Amphenol XLR 5p IN/OUT connectors
- Power connection: Seetronic powerCON IN/OUT connectors
- Dimensions (WxHxD): 994x138x70mm / 39.13"x5.43"x2.76"
- Weight: 5,4kg / 11.9lbs

CERTIFICATIONS / APPROVALS

- Certifications / Approvals: CE, UKCA, RCM

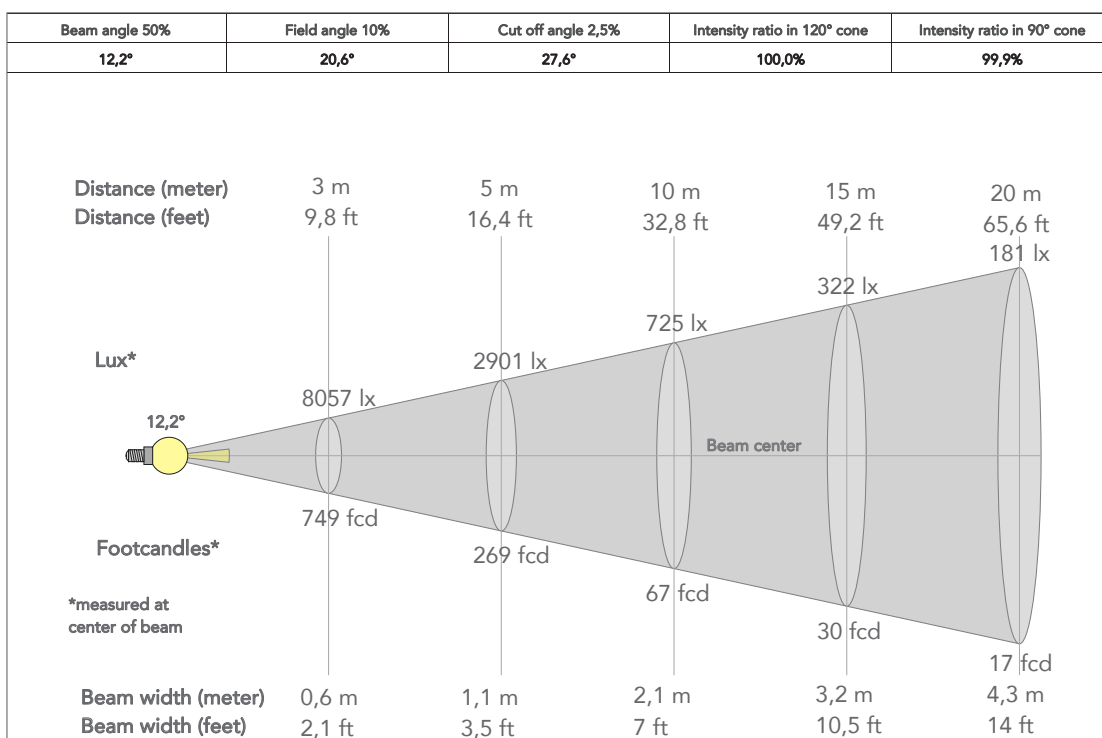
ACCESSORIES & RELATED PRODUCTS

- | | |
|-----------------|---|
| ▪ 9313FCAL03 | Ass. 3x2.5mm TH07 cable, 16A 3p 230V CEE plug, SETSAC3FCA socket, L.3 m |
| ▪ 9333FCAL03 | Ass. 3x2.5mm TH07 cable, SHUKO plug, SETSAC3FCA socket, L.3 m |
| ▪ 938025L03 | 3x2.5mm TH07 Cable, 20A SETSAC3FCA, 20A SETSAC3FCB, L. 3m |
| ▪ ARCLUMIL25D45 | Optic lens 25°, D.45mm |
| ▪ C6002B | Slim aluminum clamp, 200kg loading, 48-51mm tubes, M10 bolt, Black |

- | | |
|-----------------|---|
| ▪ RSR0630B | Steel security cable for hanging bodies, inox steel shackle, L=60 cm, black |
| ▪ TOUR53415L03 | Dmx cable HC5340. CANC5MXX XLR 5p->CANC5FXX XLR (f) 5p, L.3m |
| ▪ ARCLUMIL15D45 | Optic lens 15°, D.45mm |
| ▪ ARCLUMIL45D45 | Optic lens 45°, D.45mm |
| ▪ OS25 | Quick-Lock omega bracket |
| ▪ UPBOX1U | Firmware uploader kit, USB IN, 3pin XLR DMX OUT, USB OUT |

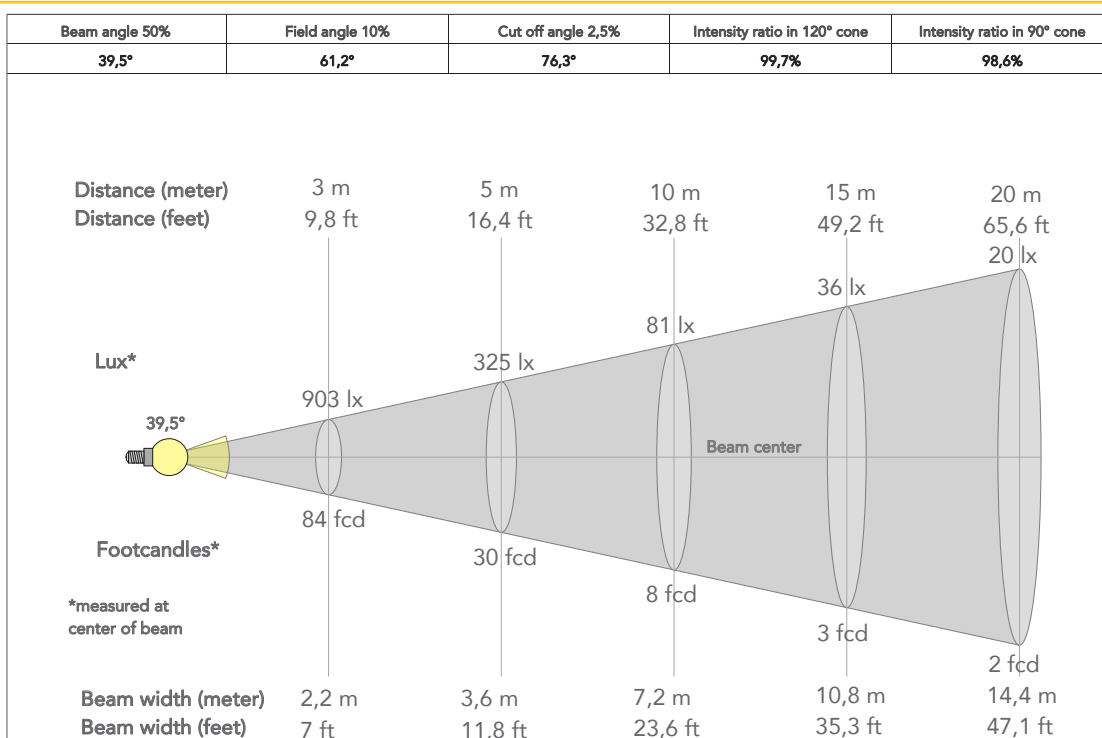
PRESET FULL ON

Beam angle 50%: 15°

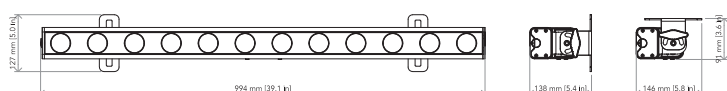


PRESET FULL ON

Beam angle 50%: 45°



TECHICAL DRAWINGS



CERTIFICATIONS / APPROVALS



Visit our website
for specifications and
tech documentations