

# StudioCob PlusTW

165W IP65 rated Tunable White COB LED PAR



**StudioCob PlusTW** is a powerful, incredibly versatile and IP65 rated LED PAR. Fusing the old and the new, it pairs a COB LED source with a traditional parabolic reflector to deliver a proper PAR replacement with a homogenised output, single shadow and flexible lens options.

## MAIN FEATURES

- IP65 rated connectors for easy use both indoor and outdoor
- 165W Tunable White COB LED source with HD dimming and high CRI
- Flexible lens options of 18° - 38° - 60°

## VERSIONS

Code	Housing
STUDIOCOBPLUSTWBK	Black
STUDIOCOBPLUSTWWH	White

## TECHNICAL SPECIFICATION

### LIGHT SOURCE

- Source: 155W Tunable White LED
- CCT: WW 3.200K - CW 7'500K - NW 5'000K
- Luminous flux: (20°) 3'809 - (36°) 3'510lm
- Lux: (20°) WW 957 lx - CW 1'462 lx - NW 2'312lx @3 m
- Lux: (34°) WW 331 lx - CW 434 lx - NW 732lx @3 m
- CRI: WW / CW > 95
- Source life expectancy: > 30.000 h

### OPTICS

- Beam angle: (on-board) 18° - (inc) 38° - (opt) 60°
- Field angle: (on-board) 31° - (inc) 70°
- Lens type: parabolic reflector in combination with HD fresnel lens
- Additional optics: flood (without lens) - 38° (inc)

### COLOUR SYSTEM

- Colour mixing: tunable white
- CCT: CCT control through dedicated DMX channel
- White presets: 3.200 K ~ 7.500K

### DYNAMIC EFFECTS

- Static mode: selection of static colour
- Manual mode: manual adjustment of dimmer and strobe
- Auto mode: built-in programs with execution speed adjustment

### BODY

- Body: sturdy die-cast aluminium body
- Body colour: black, white finishing available

### CONTROL

- Protocols: DMX512, RDM
- DMX channels: 2 / 4 / 7 channel
- RDM: RDM for remote monitoring and settings
- Display: black OLED touch display
- Firmware upgrade: yes, via USB - DMX interface (UPBOX1) not included
- Master/Slave: for synchronised operation of more units linked in a chain

### ELECTRONICS

- Dimmer: linear 0 ~ 100% electronic dimmer
- Dimmer curves: 4 selectable dimming modes available
- Strobe / shutter: 1 - 28 Hz, electronic
- Display battery: self-charging battery backup
- Operating temperature: -20° ~ +45°
- LED Control: flicker free frequency with adjustable PWM
- Selectable PWM: 600 ~ 25.000 Hz

### ELECTRICAL

- Mains power supply: 100-240V - 50/60Hz
- Max power consumption: 157W
- Output (at 230V): 12 units on a single power line
- Power factor: > 0,97

### PHYSICAL

- IP rating: 65 for temporary outdoor application, not for fixed installation
- Cooling: active, silent operation
- Suspension and fixing: double hanging bracket suitable for safe hanging and for floor positioning
- Signal connection: Seetronic XLR 5p IN/OUT connectors
- Power connection: Seetronic powerCON waterproof IN/OUT connectors
- Dimensions (WxHxD): 259x187x370mm
- Weight: 4,9kg

### CERTIFICATIONS / APPROVALS

- Certifications / Approvals: CE, UKCA, RCM, cTUVus, FCC

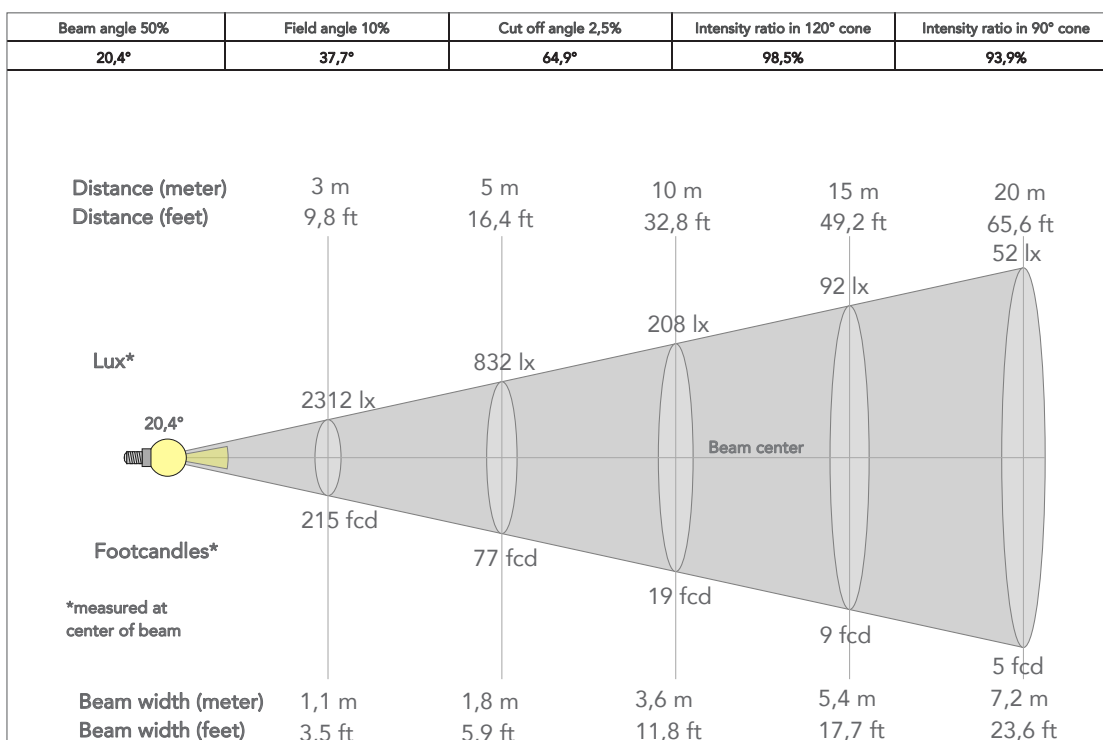
## ACCESSORIES & RELATED PRODUCTS

▪ 9313FXWL03	Ass. 3x2.5mm TH07 cable, 16A 3p 230V CEE plug, SETSAC3FX socket, L.3 m
▪ 9333FXWL03	Ass. 3x2.5mm TH07 cable, SHUKO plug, SETSAC3FX socket, L.3m
▪ 938225L03	3x2.5mm TH07 Cable, 16A SETSAC3MX, 16A SETSAC3FX, L. 3m
▪ C6002B	Slim aluminum clamp, 200kg loading, 48-51mm tubes, M10 bolt, Black
▪ INF53415L03	Dmx cable HC5340. SETMC5MXXB XLR 5p->SETMC5FXXB XLR (f) 5p L.3m
▪ RSR0630B	Steel security cable for hanging bodies, inox steel shackle, L=60 cm, black

▪ STUDIOCOBPLUSL18	Optics for STUDIOCOBPLUS projectors series, 18°
▪ STUDIOCOBPLUSL38	Optics for STUDIOCOBPLUS projectors series, 38°
▪ STUDIOCOBTPG	Filter frame for STUDIOCOB projectors
▪ STUDIOCOBPLUSL60	Optics for STUDIOCOBPLUS projectors series, 60°
▪ STUDIOCOBBD	Barn door 4 directional flaps to adjust the light beam, f. frame included
▪ FCLCOBPLUS	Flight case for 8 STUDIOCOBPLUS
▪ UPBOX1U	Firmware uploader kit, USB IN, 3pin XLR DMX OUT, USB OUT

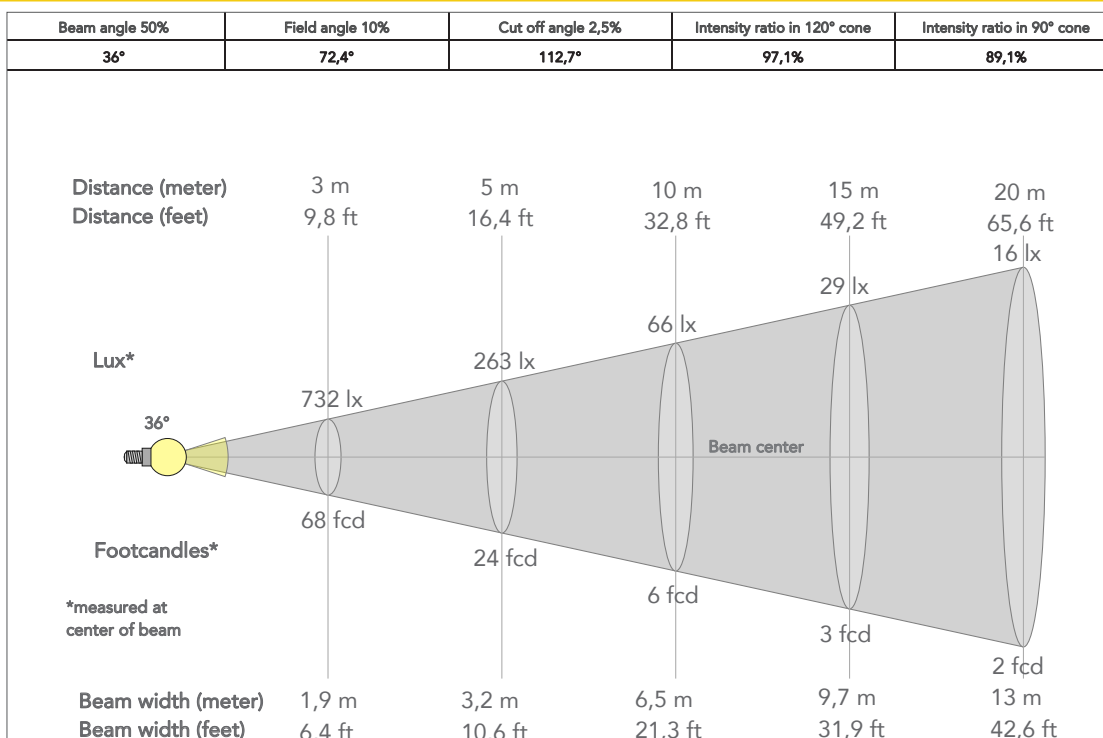
## PRESET FULL ON NW

Beam angle 20°

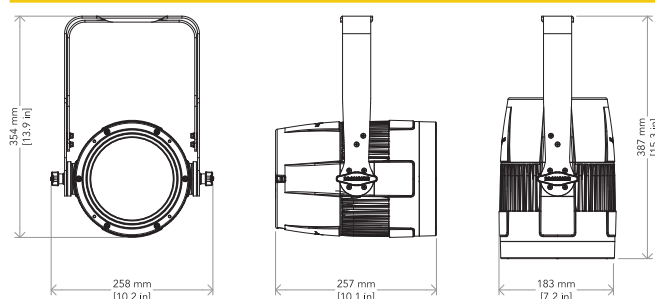


## PRESET FULL ON NW

Beam angle 34°



## TECHNICAL DRAWINGS



## CERTIFICATIONS / APPROVALS



Conforms to UL STD. 1573  
Certified to CSA STD: C22.2 NO. 166

Visit our website  
for specifications and  
tech documentations

