

ArcShine 12

12x8W RGBW/FC outdoor IP66 linear fixture with pixel control

ORDER CODE: **ARCSHINE12**



ArcShine 12 is a linear wall washer with 12x8W RGBW/FC LEDs source designed for outdoor installations where a high-performance linear projector with superb brightness and chromatic precision is required. The linear shape design and the slim profile allows the **ArcShine 12** to be easily integrated into any architectural design both indoor and outdoor (IP66) due to the construction of chassis in die-cast aluminium and tempered glass. This linear luminaire also features individual pixel control of each emitters for extended dynamic and creative possibilities.

MAIN FEATURES

- 12x8W RGBW/FC LEDs with pixel control
- Slim profile and fanless
- IP66 for outdoor installs

TECHNICAL SPECIFICATION

LIGHT SOURCE

- Source: 12x8W RGBW / FC LEDs
- Luminous flux: 2'995lm
- Lux: (15°) 1'182lx @5 m full
- Lux: (45°) 175lx @5 m full
- Source life expectancy: > 50.000 hrs (L70B10 @Ta 25° C / 77° F)

OPTICS

- Beam angle: 15°
- Field angle: 22°
- Additional optics: 25° - 45° (optional)

COLOUR SYSTEM

- Colour mixing: RGBW / FC
- White presets: 3.200 K ~ 10.000K
- Colour wheel: virtual colour wheel with macros
- Macros: several pre-built macros with adjustable speed

DYNAMIC EFFECTS

- Static mode: selection of static colour
- Manual mode: manual adjustment of colour
- Auto mode: built-in programs with execution speed adjustment

BODY

- Body: sturdy die-cast aluminium body
- Body colour: RAL 9003

CONTROL

- Protocols: DMX512
- DMX channels: 4 / 6 / 10 / 48 / 53channel
- Pixel control: pixel2pixel control
- Display: touch - sensitive LED display
- Firmware upgrade: yes, via USB - DMX interface (UPBOX1) not included
- Master/Slave: for synchronised operation of more units linked in a chain

ELECTRONICS

- Dimmer: linear 0 ~ 100% electronic dimmer
- Dimmer curves: 4 selectable dimming modes available
- Strobe / shutter: 1 ~ 30 Hz, electronic
- Operating temperature: -20° C / +45° C (-4° F / +113° F)
- LED Control: flicker free operation

ELECTRICAL

- Mains power supply: 100-240V - 50/60Hz
- Max power consumption: 108W
- Output (at 230V): 16 units on a single power line

PHYSICAL

- IP rating: 66 for outdoor installations
- Cooling: pressure and temperature balance through GORE membrane vents
- Suspension and fixing: bracket for hanging and positioning
- Adaptors: XLR and Schuko 16A adaptors included
- Signal connection: moulded IP signal IN/OUT connectors
- Power connection: moulded IP signal IN/OUT connectors
- Dimensions (WxHxD): 990x200x187mm
- Weight: 8,8kg

CERTIFICATIONS / APPROVALS

- Certifications / Approvals: CE, UKCA, RCM

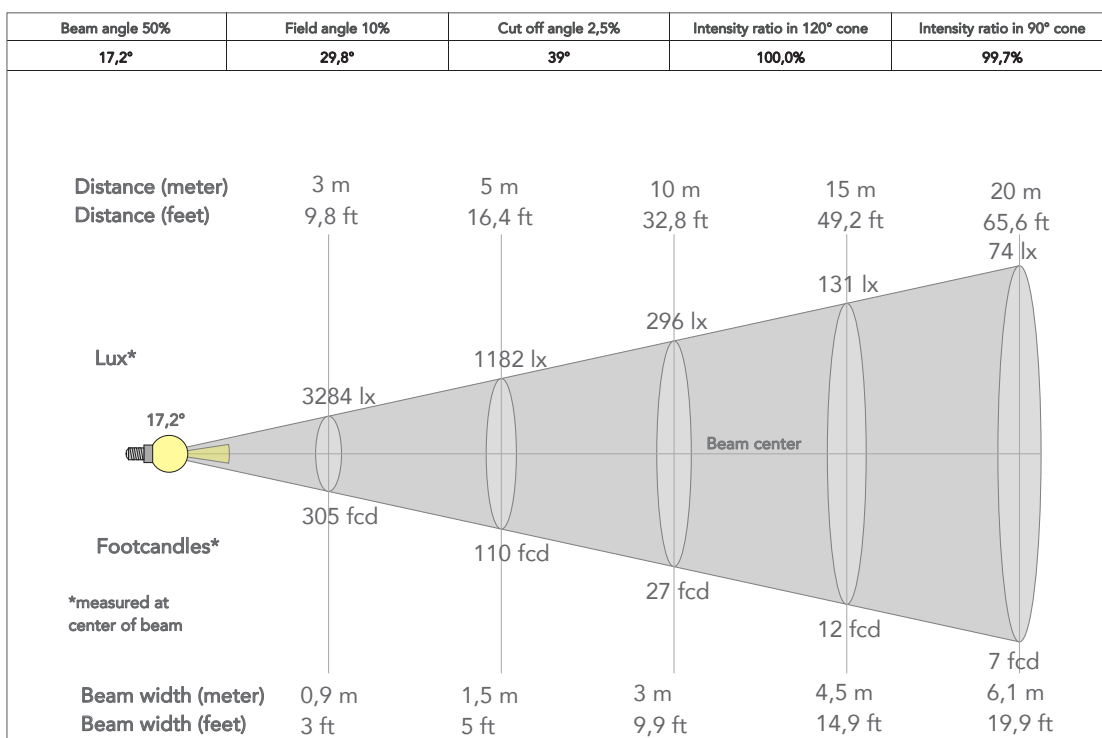
ACCESSORIES & RELATED PRODUCTS

- ARCLUMIL15D42 Optic lens 15°, D.42mm
- C6002B Slim aluminum clamp, 200kg loading, 48-51mm tubes, M10 bolt, Black
- RSR0630B Steel security cable for hanging bodies, inox steel shackle, L=60 cm, black
- ARCLUMIL25D42 Optic lens 25°, D.42mm
- ARCLUMIL45D42 Optic lens 45°, D.42mm

- AWEXAC1 Extension IP67 power cable, IPpowercon-F -> IPpowercon-M. compatible
- AWEXDC1 IP67 DMX extension cable for outdoor architectural projectors
- UPBOX1U Firmware uploader kit, USB IN, 3pin XLR DMX OUT, USB OUT

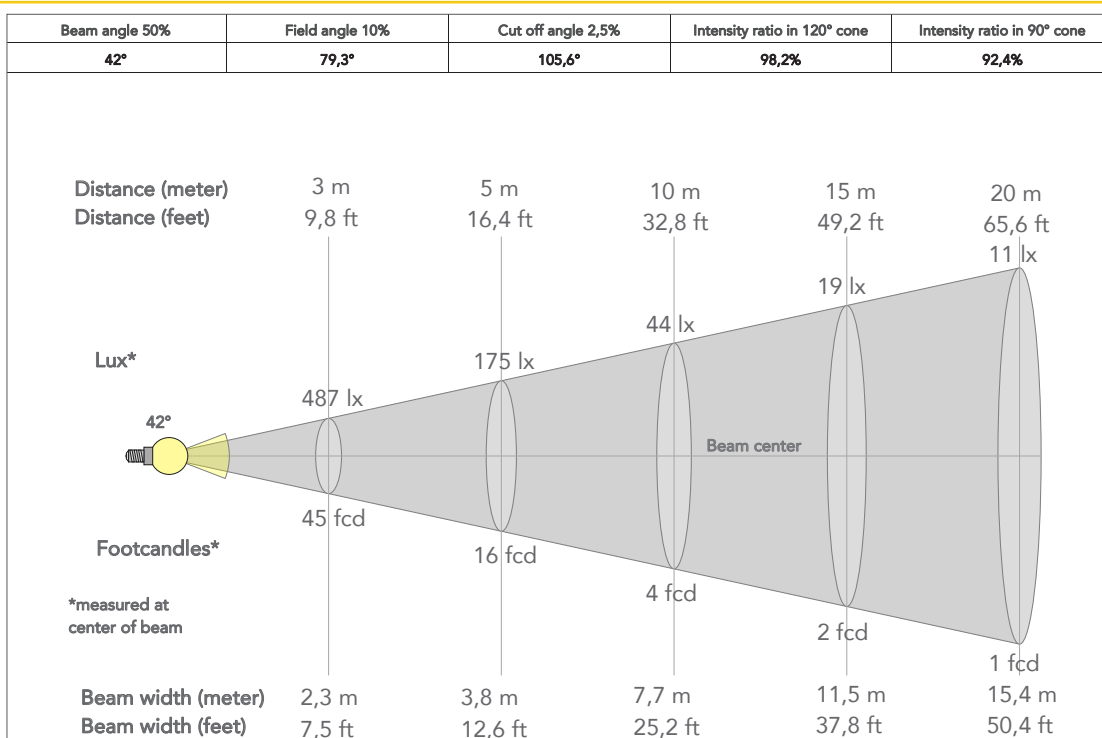
PRESET FULL ON

Beam angle 50%: 15°

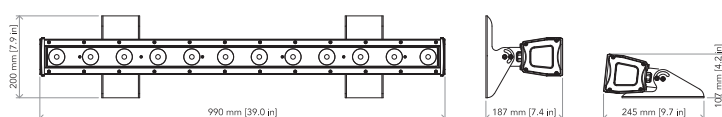


PRESET FULL ON

Beam angle 50%: 45°



TECHNICAL DRAWINGS



CERTIFICATIONS / APPROVALS

Visit our website
for specifications and
tech documentations

