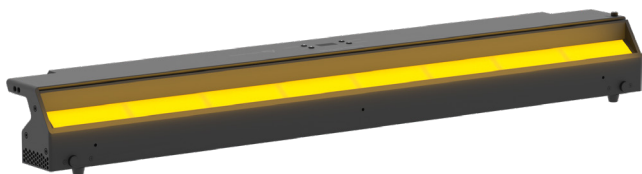


# EclCyclorama 100

330W linear soft CYC and flood light with RGB+Warm White colour mixing

ORDER CODE: **ECLCYC100**



**EclCyclorama 100** is a soft-edge, linear cyclorama and floodlight, designed in a surprisingly low profile form factor to meet applications at both front and end of the stage, offering an unprecedented level of brightness in its category. The fixture is equipped with a custom and calibrated RGB + Warm White LED source, which is capable to deliver a linear and high quality white reproduction of the entire spectrum with high CRI, TLCI and TM30 performances. The optical system has been designed to offer a very wide asymmetric beam angle, and capable of a superior lumen efficiency, making the **EclCyclorama** range a very flexible solution, suitable for both application where fixture are connected each other or separated by a considerable distance, without worrying of dark-edge or uniformity gaps. The fixture is extremely user friendly and offers a multitude of control possibilities being DMX, RDM, Artnet, sACN and Wireless DMX.

## MAIN FEATURES

- RGB + Warm White colour systems allows high quality of whites (CRI 93 @3.200 K) and bright colours.
- Slim design, with only 12 cm height for easy implementation in the front or at the back of the stage.
- Wide Asymmetric beam angle to allow flexible installation at modular distances between fixtures
- Hardware designed with tilt angle adjustment, beam control and flexible hanging and ground stacking applications.

## TECHNICAL SPECIFICATION

### LIGHT SOURCE

- Source: 330W RGB + Warm White
- Luminous flux: (with 40°x80° filter on board) 22'649 @full
- Lux: @1 m to wall and 1,5 m height @full (with standard filter 40°x80°) 1'240 lx - (with 40° filter) 2'610 lx - (with 10°x60° filter) 3'110 lx - (with 30°x60° filter) 2'880lx
- CRI: 93 @3.200 K; 92,6 @5.600 K
- R9: 88 @3.200 K; 93,7 @5.600 K
- TLCI: 91 @5.600 K
- TM30 Rf: 90,9 @5.600 K
- TM30 Rg: 106 @5.600 K
- Source life expectancy: > 50.000 h

### OPTICS

- Beam angle: (VxH) 40°x80°
- Additional optics: see available accessories

### COLOUR SYSTEM

- Colour mixing: RGB + Warm White
- CCT: CCT control, + / - green correction, tungsten emulation
- White presets: 2.800 K - 10.000K
- Colour wheel: virtual colour wheel with macros

### DYNAMIC EFFECTS

- Control Resolution: 16-bit dimmer, colours
- Special features: linear crossfade channel from any white to any colour; virtual CTO on colours

### BODY

- Hardware on-board: sockets for quick-Lock Omega bracket (clamp not included)
- Body: sturdy die-cast aluminium body
- Body colour: black
- Other: +/- 8° angle adjusting

## ACCESSORIES & RELATED PRODUCTS

• LRLUNA	Single Universe DMX transceiver with Bluetooth
• TOUR53415L03	Dmx cable HC5340. CANS5MXX XLR 5p->CANS5FXX XLR (f) 5p, L.3m
• FCLECLCYC	Flightcase for 4 pcs of ECLCYC100 or 8 pcs ECLCYC050 divided in two layers
• 938225L03	3x2.5mm TH07 Cable, 16A SETSAC3MX, 16A SETSAC3FX, L. 3m
• 9313FXWL03	Ass. 3x2.5mm TH07 cable, 16A 3p 230V CEE plug, SETSAC3FX socket, L.3 m
• 9333FXWL03	Ass. 3x2.5mm TH07 cable, SHUKO plug, SETSAC3FX socket, L.3m
• C6002B	Slim aluminum clamp, 200kg loading, 48-51mm tubes, M10 bolt, Black

### CONTROL

- Protocols: DMX512, RDM, Art-Net, sACN, W-DMX
- Wireless Control: included, wireless solution receiver
- RDM: RDM for remote monitoring and settings
- Display: Graphic User Interface
- Firmware upgrade: yes, via USB - DMX interface (UPBOXPRO/UPBOX1) not included

### ELECTRONICS

- Dimmer curves: selectable dimming modes available
- Strobe / shutter: 1 - 30 Hz, electronic
- Operating temperature: -10° ~ +45°
- LED Control: flicker free frequency with adjustable PWM
- Selectable PWM: 600 ~ 25.000 Hz

### ELECTRICAL

- Mains power supply: 100-240V - 50/60Hz
- Max power consumption: 400W
- Standby power: 110V (60Hz): 9,4W; 230V (50Hz): 9,6W
- Power factor: >0,94
- Inrush current: 110V (60Hz): 14,8A; 230V (50Hz): 24,2A

### PHYSICAL

- IP rating: IP20
- Cooling: heat sink without fan
- Suspension and fixing: any position with quick-lock omega brackets
- Signal connection: Amphenol XLR 5p IN/OUT connectors
- Data connection: RJ45 IN/OUT
- Power connection: Seetronic powerCON waterproof IN/OUT connectors
- Dimensions (WxHxD): 1000x119x148mm / 39.37"x4.69"x5.83"
- Weight: 9,6kg / 21.16lbs

### CERTIFICATIONS / APPROVALS

- Certifications / Approvals: CE, UKCA, RCM, cTUVus, FCC

• RSR0630B	Steel security cable for hanging bodies, inox steel shackle, L=60 cm, black
• ECLCYCBD100	Upper and lower barndoors for adjust the light beam
• ECLCYC100PO	Pole operated aluminium yoke bracket for pan/tilt
• ECLCYCF40L100	Light diffusion filter for ECLCYC series projectors, 40°, 100 cm
• ECLCYCF1060L100	Light diffusion filter for ECLCYC series projectors, 10°x60°, 100 cm
• ECLCYCF3060L100	Light diffusion filter for ECLCYC series projectors, 30°x60°, 100 cm
• ECLCYCOHB	Orientable hanging bar for ECLCYC series projectors
• OS25	Quick-Lock omega bracket
• OS25D13	Quick-Lock omega bracket, M12 hole
• UPBOX1UP5	Firmware uploader kit, USB IN, 5pin XLR DMX OUT, USB OUT

## PRESET FULL ON

Beam angle 50%: 42°x83°



Total lumen output:

22649 lm

Peak candela output:

24784 cd

### PRODUCT NAME:

ECL CYC100

### MEASUREMENT CONDITIONS:

Beam angle:

Filter Native

Target:

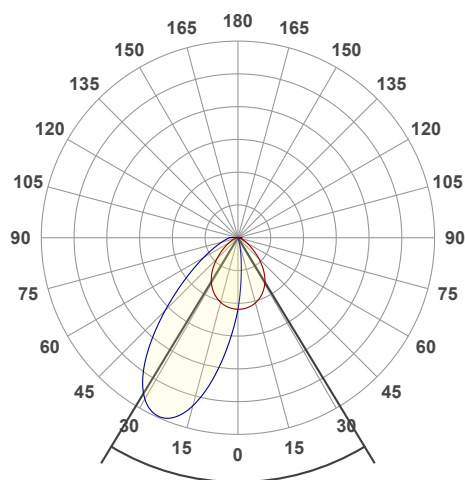
Full On

Operator:

Paolo Carvone

Date and time:

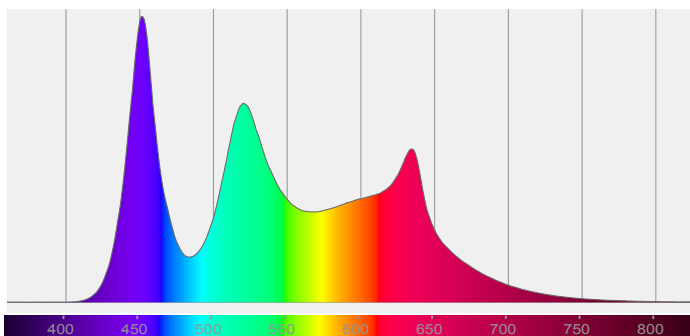
26/05/2020 12:03:24



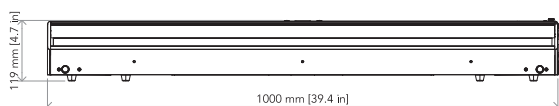
x(red curve) Beam angle 50%:82,9°

x(blue curve) Beam angle 50%:42°

### Spectra



## TECHNICAL DRAWINGS



## CERTIFICATIONS / APPROVALS



Conforms to UL STD. 1573  
Certified to CSA STD: C22.2 NO. 166

Visit our website  
for specifications and  
tech documentations

