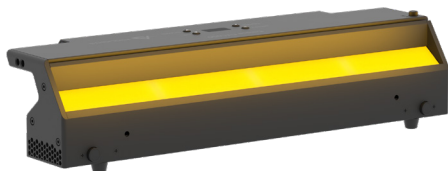


# EclCyclorama 050

170W linear soft CYC and flood light with RGB+Warm White colour mixing

ORDER CODE: **ECLCYC050**



**EclCyclorama 050** is a soft-edge, linear cyclorama and floodlight, designed in a surprisingly low profile form factor to meet applications at both front and end of the stage, offering an unprecedented level of brightness in its category. The fixture is equipped with a custom and calibrated RGB + Warm White LED source, which is capable to deliver a linear and high quality white reproduction of the entire spectrum with high CRI, TLCI and TM30 performances. The Optical system has been designed to offer a very wide asymmetric beam angle, and capable of a superior lumen efficiency, making the **EclCyclorama** range a very flexible solution, suitable for both application where fixture are connected each other or separated by a considerable distance, without worrying of dark-edge or uniformity gaps. The fixture is extremely user friendly and offers a multitude of control possibilities being DMX, RDM, Artnet, sACN and Wireless DMX.

## MAIN FEATURES

- RGB + Warm White colour systems allows high quality of whites (CRI 93 @3.200 K) and bright colours.
- Slim design, with only 12 cm height for easy implementation in the front or at the back of the stage.
- Wide Asymmetric beam angle to allow flexible installation at modular distances between fixtures
- Hardware designed with tilt angle adjustment, beam control and flexible hanging and ground stacking applications.

## TECHNICAL SPECIFICATION

### LIGHT SOURCE

- Source: 170W RGB + Warm White
- Luminous flux: (with 40°x80° filter on board) 13'896 @full
- Lux: @1 m to wall and 1,5 m height @ full (with standard filter) 625 lx - (with 40° filter) 1'530 lx - (with 10°x60° filter) 1'590 lx - (with 30°x60° filter) 1'690lx
- CRI: 93 @3.200 K; 91 @5.600 K
- R9: 91 @3.200 K; 95 @5.600 K
- TLCI: 87 @5.600 K
- TM30 Rf: 88,8 @5.600 K
- TM30 Rg: 107,4 @5.600 K
- Source life expectancy: > 50.000 h

### OPTICS

- Beam angle: (VxH) 40°x80°
- Additional optics: see available accessories
- COLOUR SYSTEM
- Colour mixing: RGB + Warm White
- CCT: CCT control, + / - green correction, tungsten emulation
- White presets: 2.800 K - 10.000K
- Colour wheel: virtual colour wheel with macros

### DYNAMIC EFFECTS

- Control Resolution: 16-bit dimmer, colours
- Special features: linear crossfade channel from any white to any colour; virtual CTO on colours

### BODY

- Hardware on-board: sockets for quick-Lock Omega bracket (clamp not included)
- Body: sturdy die-cast aluminium body
- Body colour: black
- Other: +/- 8° angle adjusting

## ACCESSORIES & RELATED PRODUCTS

▪ 9313FXWL03	Ass. 3x2.5mm TH07 cable, 16A 3p 230V CEE plug, SETSAC3FX socket, L.3 m
▪ 9333FXWL03	Ass. 3x2.5mm TH07 cable, SHUKO plug, SETSAC3FX socket, L.3m
▪ 938225L03	3x2.5mm TH07 Cable, 16A SETSAC3MX, 16A SETSAC3FX, L. 3m
▪ C6002B	Slim aluminum clamp, 200kg loading, 48-51mm tubes, M10 bolt, Black
▪ FCLECLCYC	Flightcase for 4 pcs of ECLCYC100 or 8 pcs ECLCYC050 divided in two layers
▪ RSR0630B	Steel security cable for hanging bodies, inox steel shackle, L=60 cm, black

### CONTROL

- Protocols: DMX512, RDM, Art-Net, sACN, W-DMX
- Wireless Control: included, wireless solution receiver
- RDM: RDM for remote monitoring and settings
- Display: Graphic User Interface
- Firmware upgrade: yes, via USB - DMX interface (UPBOXPRO/UPBOX1) not included

### ELECTRONICS

- Dimmer curves: selectable dimming modes available
- Strobe / shutter: 1-30 Hz, electronic
- Operating temperature: -10° ~ +45°
- LED Control: flicker free frequency with adjustable PWM
- Selectable PWM: 600 ~ 25.000 Hz

### ELECTRICAL

- Mains power supply: 100-240V - 50/60Hz
- Max power consumption: 180W
- Standby power: 110V (60Hz): 6W; 230V (50Hz): 6,4W
- Power factor: >0,94
- Inrush current: 110V (60Hz): 7,7A; 230V (50Hz): 16,4A

### PHYSICAL

- IP rating: IP20
- Cooling: heat sink without fan
- Suspension and fixing: any position with quick-lock omega brackets
- Signal connection: Amphenol XLR 5p IN/OUT connectors
- Data connection: RJ45 IN/OUT
- Power connection: Seetronic powerCON waterproof IN/OUT connectors
- Dimensions (WxHxD): 500x119x148mm / 19.69"x4.69"x5.83"
- Weight: 5kg / 11.02lbs

### CERTIFICATIONS / APPROVALS

- Certifications / Approvals: CE, UKCA, RCM, cTUVus, FCC

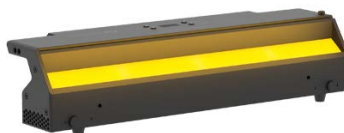
▪ TOUR53415L03	Dmx cable HC5340. CANS5MXX XLR 5p->CANS5FXX XLR (f) 5p, L.3m
▪ WSBBF1G5	BlackBox F-1 G5 transmitter, 2,45GHz & 5.2/5,8 GHz, DMX/RDM, 512Ch
▪ WSBBF1G6	BlackBox F-1 G6 transrec, 512ch, 2.45GHz, DMX&RDM,Bluetooth,G3,G4,G4S, G5, CRMX
▪ WSBBR512G5	BlackBox R-512 G5 receiver 512Ch, 2.45GHz & 5.8GHz, DMX/RDM optional
▪ WSBBR512G6	BlackBox R-512 G6 receiver 512Ch, 2.45GHz,DMX&RDM, Bluetooth,G3,G4,G4S,G5,CRMX
▪ ECLCYC050PO	Pole operated aluminium yoke bracket for pan/tilt for ECLCYC050

## ACCESSORIES & RELATED PRODUCTS

- |                   |  |                   |  |
|-------------------|--|-------------------|--|
| ▪ ECLCYCBD050     | Upper and lower barndoors for adjust the light beam for ECLCYC050          | ▪ ECLCYCF3060L050 | Light diffusion filter for ECLCYC series projectors, 30°x60°, lenght 50 cm |
| ▪ ECLCYCF40L050   | Light diffusion filter for ECLCYC series projectors, 40°, lenght 50 cm     | ▪ ECLCYCOHB       | Orientable hanging bar for ECLCYC series projectors                        |
| ▪ ECLCYCF1060L050 | Light diffusion filter for ECLCYC series projectors, 10°x60°, lenght 50 cm | ▪ OS25            | Quick-Lock omega bracket   |
|                   |  | ▪ UPBOX1U         | Firmware uploader kit, USB IN, 3pin XLR DMX OUT, USB OUT                   |

## PRESET FULL ON

Beam angle 50%: 40°x80°



Total lumen output:

13100 lm

Peak candela output:

13655 cd

**PRODUCT NAME:**

ECL CYC050

**MEASUREMENT CONDITIONS:**

Beam angle:

Filter Native

Target:

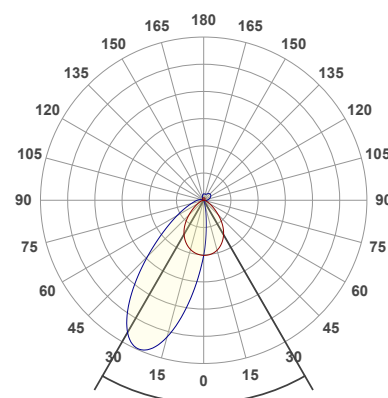
Full On

Operator:

Paolo Carvone

Date and time:

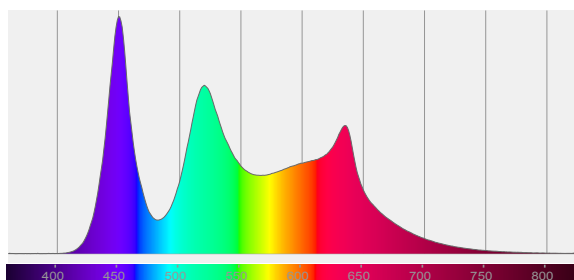
25/05/2020 13:15:32



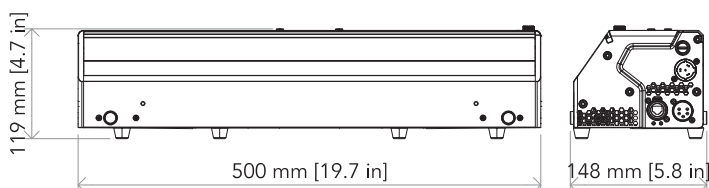
x(red curve) beam angle 50% 79.8°

y(blue curve) beam angle 50% 40°

Spectra



## TECHNICAL DRAWINGS



## CERTIFICATIONS / APPROVALS



Conforms to UL STD. 1573  
Certified to CSA STD: C22.2 NO. 166

Visit our website  
for specifications and  
tech documentations

