

AlphaPix 4T

4.8 mm pixel pitch outdoor rental LED screen

ORDER CODE: **APIX4T**



In this fast-paced market, the **AlphaPix 4T** Touring family consistently keep ahead of the game by delivering top quality images with the latest high-resolution temporary outdoor LED display. The **AlphaPix 4T** uses high-brightness, black-faced, square LEDs with UV coatings in a robust, lightweight die-cast aluminium housing. The frame and fast interlocking system create a seamless image with minimal setup time. To deliver the perfect image, the **AlphaPix 4T** series features a high-refresh rate, advanced greyscale properties and automatic image correction along with a 140° viewing angle.

MAIN FEATURES

- Outdoor (IP65/IP54) die-cast aluminium housing for temporary outdoor installation
- Gapless panel joins for seamless image
- High-brightness square LEDs with UV coating
- Flicker-free on camera
- High-performance video reproduction at every level of brightness
- 140° viewing angle
- CE and EMC certified by TUV

TECHNICAL SPECIFICATION

VIDEO

- LED source: SMD 2727 high-power FC black frame
- Pixel pitch: 4.8mm
- Panel resolution: 104×104pixels
- Module resolution: 52x52pixels
- Luminous flux: 5.500nit
- Grayscale: 16 bit
- Refresh rate ≥: 1.920Hz
- Drive Mode: 1/13 scan, constant current
- Vertical viewing angle: 140°
- Horizontal viewing angle: 100°
- LED density: 43.264LED/sqm
- Dead Pixel Ratio: <0,002
- LED avg life span: 50.000

ELECTRICAL

- Power input/output: Seetronic powerCON
- Power supply: AC 110/230 V 50/60 Hz
- Max power consumption (panel): 171W
- Avg power consumption (panel): 57W
- Max power consumption (sqm): 684W
- Avg power consumption (sqm): 228W
- Standby power consumption (pannello): 11W
- Max rated current/panel:: AC 220V / 0,77 A
- Max power output: 12modules
- Working temperature: -10 ~ +40°C
- Working humidity: 10~90%

CONTROL

- Control protocol: Novastar
- Signal input: waterproof Seetronic RJ45
- Signal output: waterproof Seetronic RJ45

MECHANICS

- Module size (WxH): 250x250mm
- Panel size(WxHxD): 500x500x96mm
- Vertical hanging system: built-in aliscap clamp support
- Cooling: natural cooling of the peculiar chassis and to absence of fans
- Connection: seamless locking system
- Body: die-cast aluminium housing
- Color: black
- IP rating: IP65 / IP54
- Panel weight: 8,5kg
- Weight per square meter: 34kg
- Hanging Panel Quantity ≤: 20
- Compliant Standard: CE

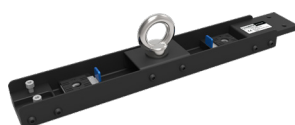
ACCESSORIES & RELATED PRODUCTS

▪ AP2366CASE	Flight case for 6pcs APIX series LED display, 600x755x795 mm	▪ AP6TDCL01	Data cable for APIX6T, APIX4T, assembled with RJ45, L.100 cm
▪ AP236H2B1	Fly bar for APIX2, APIX3, APIX6, APIX4T hanging systems, 1 column	▪ APIX600GSB1	APIX ground stacking system, PRO version (up to 6 m), single base
▪ AP236H2B2	Fly bar for APIX2, APIX3, APIX6, APIX4T hanging systems, 2 columns	▪ APIX600GSB2	APIX ground stacking system, PRO version (up to 6 m), double base
▪ AP236XJ	Metal joint used to connect 4 APIX2, 3, 6, 4T, modules, M10 hole for clamp	▪ APIX600GSBS	APIX ground stacking system, PRO version (up to 6 m), queer back support
▪ APOS	Shackle for APIX hanging systems, max load 200 kg	▪ APIX600GSBV	APIX ground stacking system, PRO version (up to 6 m), base unit vertical
▪ APRD	Steel security cable for APIX hanging systems, L. 200 cm		
▪ AP6TACL01	Power cable for APIX6T, APIX4T, L.125 cm		

ACCESSORIES



AP2366CASE



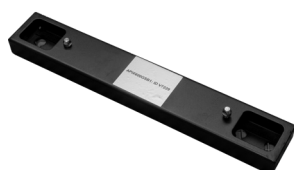
AP236H2B1



AP236H2B2



APIX600GSBS



APIX600GSB1



APIX600GSB2



APIX600GSBV



AP236XJ



APOS



APRD

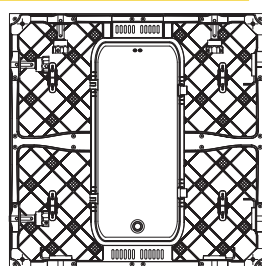
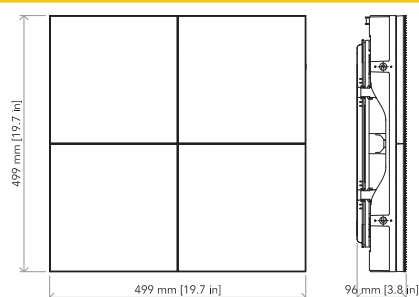


AP6TACL01



AP6TDCL01

TECHNICAL DRAWINGS



For more product
info and downloads
visit our website

