

AlphaPix 2

2,9 mm pixel pitch indoor rental LED screen

ORDER CODE: **APIX2**



In this fast-paced market, the **AlphaPix 2** family keep ahead of the game by consistently delivering top-quality images with the latest high-resolution indoor LED displays. The **AlphaPix 2** family use black-faced SMD LED for high-contrast and superb colour consistency in a robust, lightweight die-cast aluminium housing. The frame and fast interlocking system create a seamless image with minimal setup time. To deliver the perfect image, the **AlphaPix 2** series features a high refresh-rate, advanced greyscale properties and automatic image correction along with a viewing angle of up to 160°.

MAIN FEATURES

- Rental-friendly die-cast aluminium housing
- Black-face LED for high-contrast and superb colour consistency
- Magnetic front access LED display modules for fast and easy maintenance
- Flicker-free on camera
- High-performance video reproduction at every level of brightness
- 160° viewing angle
- CE and EMC certified by TUV

TECHNICAL SPECIFICATION

VIDEO

- LED source: SMD 2020 high-power FC black face
- Pixel pitch: 2,97mm
- Panel resolution: 168x168pixels
- Module resolution: 84x84pixels
- Luminous flux: 1.000nit
- Grayscale: 16 bit
- Refresh rate \geq : 3.840Hz
- Drive Mode: 1/16 scan, constan current
- Vertical viewing angle: 160°
- Horizontal viewing angle: 160°
- LED density: 112.896LED/sqm
- Dead Pixel Ratio: <0,002
- LED avg life span: 100.000

ELECTRICAL

- Power input/output: powerCON
- Power supply: AC 110/230 V 50/60 Hz
- Max power consumption (panel): 130W
- Avg power consumption (panel): 45W
- Max power consumption (sqm): 520W
- Avg power consumption (sqm): 180W
- Standby power consumption (pannello): 10,8W
- Max rated current/panel:: AC 220 V / 0,6 A
- Max power output: 8modules
- Working temperature: -10 ~ +40°C
- Working humidity: 10 - 90%

CONTROL

- Control protocol: Novastar
- Signal input: RJ45
- Signal output: RJ45

MECHANICS

- Module size (WxH): 250x250mm
- Panel size(WxHxD): 500x500x90mm
- Vertical hanging system: built-in aliscaf clamp support
- Cooling: natural cooling of the peculiar chassis and to absence of fans
- Connection: seamless locking system
- Body: die-cast aluminium housing
- Color: black
- IP rating: IP40
- Panel weight: 8kg
- Weight per square meter: 32kg
- Hanging Panel Quantity \leq : 20
- Compliant Standard: CE

ACCESSORIES & RELATED PRODUCTS

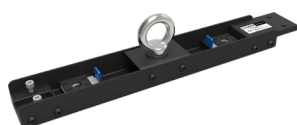
- | | |
|--------------|--|
| ▪ AP2366CASE | Flight case for 6pcs APIX series LED display, 600x755x795 mm |
| ▪ AP236H2B1 | Fly bar for APIX2, APIX3, APIX6, APIX4T hanging systems, 1 column |
| ▪ AP236H2B2 | Fly bar for APIX2, APIX3, APIX6, APIX4T hanging systems, 2 columns |
| ▪ AP236XJ | Metal joint used to connect 4 APIX2, 3, 6, 4T, modules, M10 hole for clamp |
| ▪ APOS | Shackle for APIX hanging systems, max load 200 kg |
| ▪ APRD | Steel security cable for APIX hanging systems, L. 200 cm |
| ▪ AP236ACL01 | Power cable for APIX2, APIX3, APIX6, L.110 cm |

- | | |
|---------------|--|
| ▪ AP236DCL01 | Data cable for APIX2, APIX3, APIX6, assembled with RJ45, L.110 cm |
| ▪ APIX600GSB1 | APIX ground stacking system, PRO version (up to 6 m), single base |
| ▪ APIX600GSB2 | APIX ground stacking system, PRO version (up to 6 m), double base |
| ▪ APIX600GSBS | APIX ground stacking system, PRO version (up to 6 m), queer back support |
| ▪ APIX600GSBV | APIX ground stacking system, PRO version (up to 6 m), base unit vertical |

ACCESSORIES



AP2366CASE



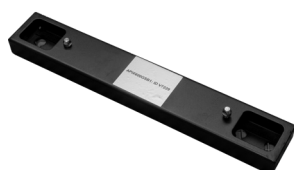
AP236H2B1



AP236H2B2



APIX600GSBS



APIX600GSB1



APIX600GSB2



APIX600GSBV



AP236XJ



APOS



APRD

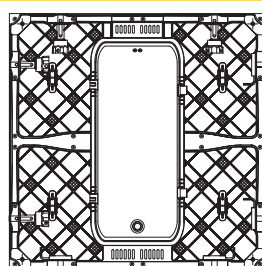
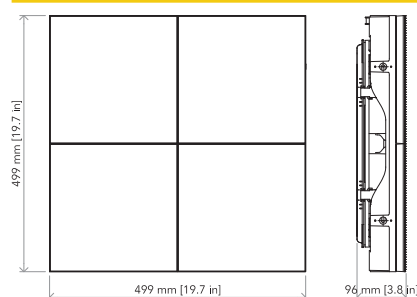


AP6TACL01



AP6TDCL01

TECHNICAL DRAWINGS



For more product
info and downloads
visit our website

