

ArcPod 15Q

15x10W RGBW/FC outdoor IP66 LED wash light for exterior installations

ORDER CODE: **ARCPD15Q**



ArcPod 15Q is a compact exterior wash fixture, featuring high-intensity light despite its small size. The unit is equipped with 15x10W RGBW / FC LEDs, delivering an exceptional output over than 5'900 lumens and a wide gamut of colours and whites. The slim sizing, as well as the wide range of available optics, makes the **ArcPod 15Q** an incredibly flexible architectural fixture to complement the bigger versions in large outdoor installs as accent light or for smaller-sized projects.

MAIN FEATURES

- Tilt adjustment and multiple lens options for fine focusing
- 15x10W RGBW / FC LEDs
- Compact form factor and fan-free design

TECHNICAL SPECIFICATION

LIGHT SOURCE

- Source: 15x10 W RGBW / FC LEDs
- Luminous flux: (10°) 4'552 lm; (15°) 5'678 lm; (25°) 5'732 lm; (45°) 5'390 @full
- Lux: (10°) 3'116 lx; (15°) 2'790 lx; (25°) 1'203 lx; (45°) 287 lx @5 m full
- Source life expectancy: > 50.000 hrs (L70B10 @Ta 25° C / 77° F)

OPTICS

- Beam angle: 25°
- Field angle: 38°
- Lens diameter: 36 mm
- Additional optics: 10° - 15° - 45° (optional) - see available accessories

COLOUR SYSTEM

- Colour mixing: RGBW / FC
- CCT: CCT control through dedicated DMX channel
- White presets: 2.800 K ~ 10.000 K
- Colour wheel: virtual colour wheel with presets
- Macros: several pre-built macros with adjustable speed

DYNAMIC EFFECTS

- Static mode: selection of static colour

BODY

- Tilt angle: 0 - 130° with manual regulation
- Body: sturdy die-cast aluminium body
- Body colour: RAL 7012

CONTROL

- Protocols: DMX512, RDM
- DMX channels: 5 / 7 / 10 channel
- RDM: RDM for remote monitoring and settings
- Display: user interface through DATAMASTER external coder (not included)
- Firmware upgrade: yes, via USB - DMX interface (UPBOXPRO/UPBOX1) not included
- Master/Slave: for synchronised operation of more units linked in a chain

ELECTRONICS

- Dimmer: linear 0 ~ 100% electronic dimmer
- Strobe / shutter: 1 ~ 30 Hz, electronic
- Operating temperature: -20° C / +45° C (-4° F / +113° F)
- LED Control: flicker free frequency with adjustable PWM
- Selectable PWM: 600 ~ 25.000 Hz

ELECTRICAL

- Mains power supply: 100-240V - 50/60Hz
- Max power consumption: 155 W
- Output (at 230V): 11 units on a single power line
- Power factor: >0,97
- Inrush current: 110VAC/7.55A, 230VAC/24.8A

PHYSICAL

- IP rating: 66 for outdoor installations
- IK rating: 08
- Cooling: passive cooling and fan-free
- Adaptors: XLR and BARE END 16A adaptors included
- Signal connection: 1,8 m moulded IP signal IN/OUT connectors
- Power connection: 1,8 m moulded IP power IN/OUT connectors
- Dimensions (WxHxD): 307x259x83 mm
- Weight: 6,3 kg

CERTIFICATIONS / APPROVALS

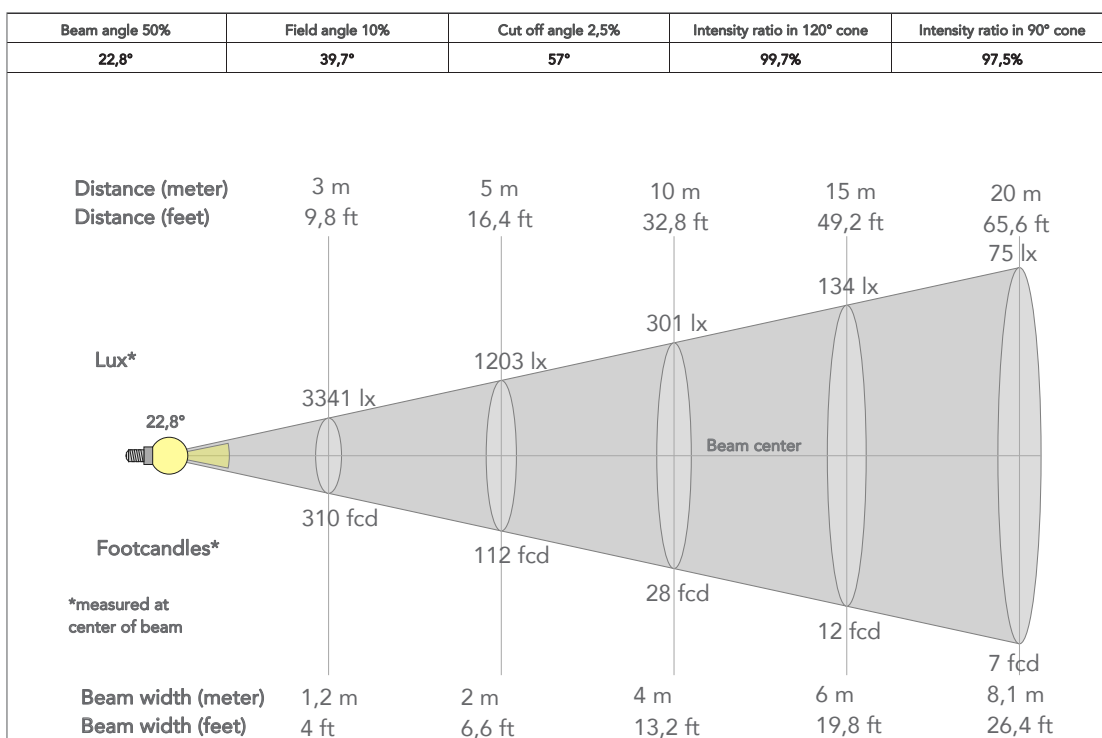
- Certifications / Approvals: CE, UKCA, RCM, cTUVus, FCC

ACCESSORIES & RELATED PRODUCTS

• C6002B	Slim aluminum clamp, 200kg loading, 48-51mm tubes, M10 bolt, Black	• A15QBD	Black barn door 4 directional flaps to adjust the light beam, ARCPD15Q
• RSR0630B	Steel security cable for hanging bodies, inox steel shackle, L=60 cm, black	• DATAMASTER	RDM/DMX tool, cable tester, 5p XLR connectors, pouch, charging cable, XLR adaptors
• A15QFILTER20 30/40/60/80	20°/30°/40°/60°/80° symmetric light diffusion filter for ARCPD15Q, 11,4x18,6 cm	• AWEXAC1L03/05/10/20	IP67 power extension cable for outdoor architectural projectors, L03/05/10/20 m
• A15QFILTER1090/1060 3060/9010/6010/6030	10°x90°/10°x60°/30°x60°/90°x10°/60°x10°/60°x30° asymmetric light diffusion filter for ARCPD15Q, 11,4x18,6 cm	• AWEXDC1L03/05/10/20	IP67 DMX extension cable for outdoor architectural projectors, L03/05/10/20 m
• S27QLENS10/15/25/45	10°/15°/25°/45° lens for SOLAR27Q, ARCPD27Q, SOLAR48Q, ARCPD48Q, ARCPD15Q and ARCPD96Q	• UPBOX1U	Firmware uploader kit, USB IN, 3pin XLR DMX OUT, USB OUT

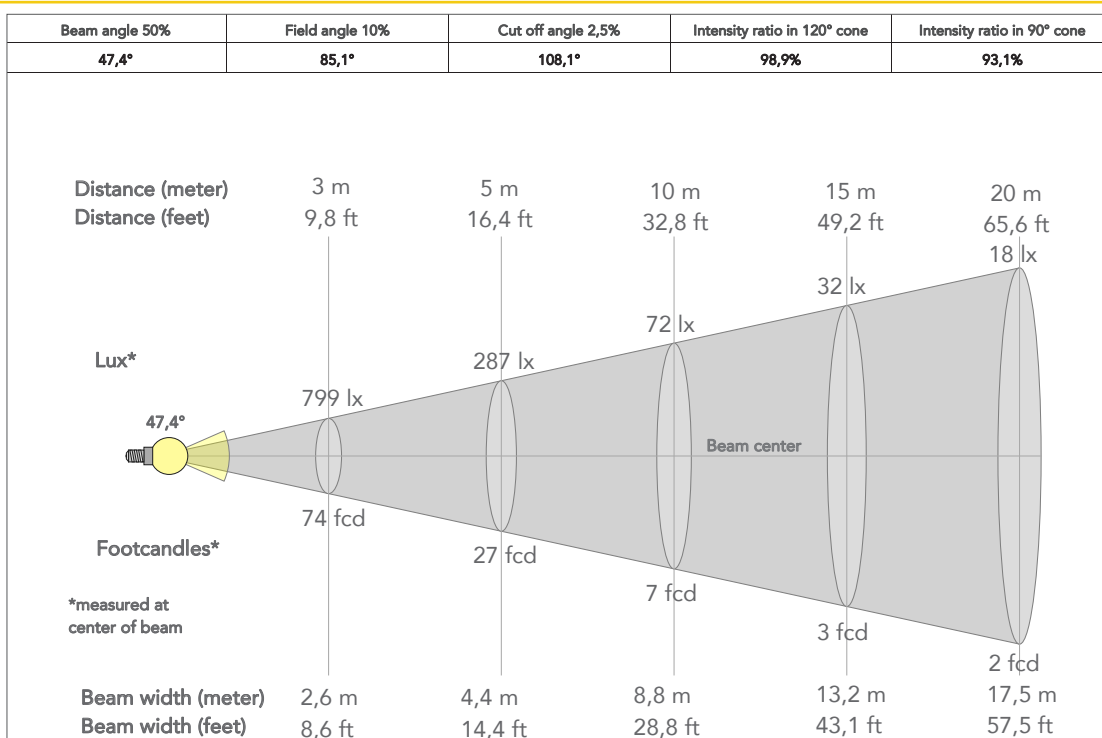
PRESET FULL ON

Beam angle 50%: 25°

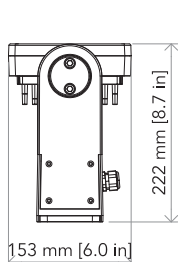
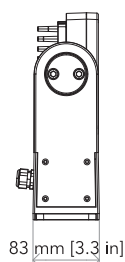
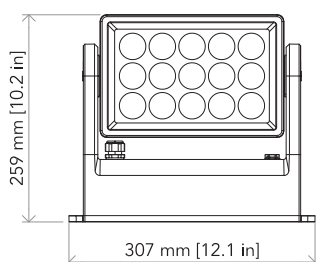


PRESET FULL ON

Beam angle 50%: 45°



TECHICAL DRAWINGS



CERTIFICATIONS / APPROVALS



Conforms to UL STD. 1573
Certified to CSA STD: C22.2 NO. 166

Visit our website
for specifications and
tech documentations

