

EclFresnel 2KTW

LED Fresnel FC and Tunable White with colour correction, to replace 2.000W lamp



TECHNICAL SPECIFICATION

LIGHT SOURCE

- Source: 500W 6 colour custom LEDs source (red, orange, green, royal blue, blue, lime)
- CCT: 2.800 K - 10.000K
- Luminous flux: (17°) 10'100 lm - (52°) 13'400lm @full
- Lux: (17°) 3'864 lx - (52°) 710lx @5 m full
- CRI: 89 @3.200 K; 90,7 @5.600 K
- R9: 80 @3.200 K; 85,4 @5.600 K
- TLCI: 87 @5.600 K
- TM30 Rf: 89,4 @3.200 K; 86,2 @5.600 K
- TM30 Rg: 101,6 @3.200 K; 102,1 @5.600 K
- Source life expectancy: > 50.000 h

OPTICS

- Zoom: 17° - 76° half peak angle
- Lens diameter: 9,84" - 250mm
- Lens type: fresnel zoom lens
- Other: spigot, barndoor and gel frame included

COLOUR SYSTEM

- Colour mixing: 6 colour custom LEDs source (red, orange, green, royal blue, blue, lime)
- CCT: CCT control, + / - green correction, tungsten emulation
- White presets: 2.800 K - 10.000K
- Colour wheel: virtual colour wheel with macros
- Macros: several pre-built macros with adjustable speed

DYNAMIC EFFECTS

- Static mode: selection of static colour
- Manual mode: manual adjustment of intensity, CT, colour correction from knob
- Auto mode: built-in programs with execution speed adjustment
- Special features: linear crossfade channel from any white to any colour; virtual CTO on colours

BODY

- Hardware on-board: filter frame, 8 doors barndoor, spigot
- Body: sturdy die-cast aluminium body
- Body colour: black, white finishing available

ACCESSORIES & RELATED PRODUCTS

9513FXWL03	Ass. 3x2.5mm TH07 cable, 16A 3p 230V CEE plug, MENAC3FXW socket, L.3 m
9533FXWL03	Ass. 3x2.5mm TH07 cable, SHUKO plug, MENAC3FXW socket, L.3m
958225L03	3x2.5mm TH07 Cable, 16A 3p PwCon MXW, 16A 3p PwCon FXW, L. 3m
C6002B	Slim aluminum clamp, 200kg loading, 48-51mm tubes, M10 bolt, Black
C6040B	Aluminum clamp for 28mm spigot, 200kg load, 48-51mm tubes, black

EclFresnel 2KTW is an advanced LED replacement of traditional 2.000W Fresnel lamps. Offering 6 colour mixing, delivering high precision reproduction of the white spectrum from 2.800 K to 10.000 K with high CRI and extensive colour reproduction. The optical system harnesses the power of a 500W custom LED with 6 colours to create an even projection, beautiful colours and precise whites, with the option to apply +/- green and magenta correction to match other light sources. Featuring HD dimming and tuning from 2.800 K to 10.000 K, the **EclFresnel 2KTW** delivers both on performance and quality of output that is demanded from this level of light.

MAIN FEATURES

- Tunable white 2.800 K - 10.000 K with high CRI and extensive colour mixing
- +/- green and magenta white tuning
- Truly silent operation making it perfect for studio and stage use

VERSIONS

Code	Housing
ECLFR2KTW	Black
ECLFR2KTWWH	White

CONTROL

- Protocols: DMX512, RDM, rotatory knob
- DMX channels: 1 / 2 / 5 - 1 / 5 - 2 / 7 - 1 / 7 - 2 / 8 / 9 / 12 / 13 / 16 / 19 / 21channel
- RDM: RDM for remote monitoring and settings
- Display: Graphic User Interface
- Firmware upgrade: yes, via USB - DMX interface (UPBOX1) not included
- Master/Slave: for synchronised operation of more units linked in a chain
- Other: 16bit control of dimmer and colour

ELECTRONICS

- Dimmer: linear 0 ~ 100% electronic dimmer
- Dimmer curves: 4 selectable dimming modes available
- Strobe / shutter: 1 - 30 Hz, electronic
- Operating temperature: -10° ~ +45°
- LED Control: flicker free frequency with adjustable PWM
- Selectable PWM: 600 ~ 25.000 Hz

ELECTRICAL

- Mains power supply: 100-240V - 50/60Hz
- Max power consumption: 400W
- Output (at 230V): 5 units on a single power line
- Power factor: >0,93

PHYSICAL

- IP rating: 20
- Cooling: combination of heat pipe cooling system and low noise fan
- Suspension and fixing: bracket for hanging and positioning
- Signal connection: Amphenol XLR 5p IN/OUT connectors
- Power connection: Neutrik powerCON TRUE1 IN/OUT connectors
- Dimensions (WxHxD): 421x537x456mm
- Dimensions with PO system (WxHxD): 401x691x456mm
- Weight: 17,2kg
- Weight with PO system: 18kg

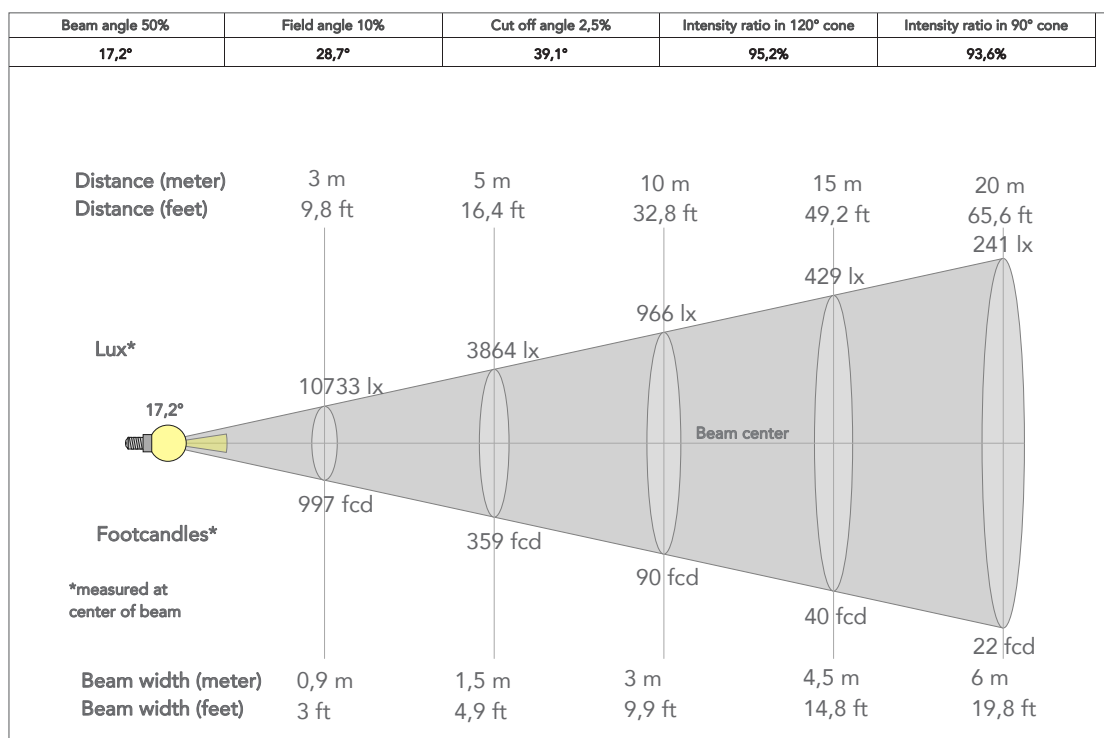
CERTIFICATIONS / APPROVALS

- Certifications / Approvals: CE, UKCA, RCM

ECLFR2KBD	Barn door with directional flaps to adjust the light beam
ECLFR2KTGP	Gel filter frame for ECLFR2K projectors
ECLFRSPG	Spigot for PROLIGHTS Fresnel series
FCLECLFR2K	Flight case for 3 pcs of ECLFR2K
RSR0630B	Steel security cable for hanging bodies, inox steel shackle, L=60 cm, black
TOUR53415L03	Dmx cable HC5340. CANC5MXX XLR 5p->CANC5FXX XLR (f) 5p, L.3m
UPBOX1U	Firmware uploader kit, USB IN, 3pin XLR DMX OUT, USB OUT

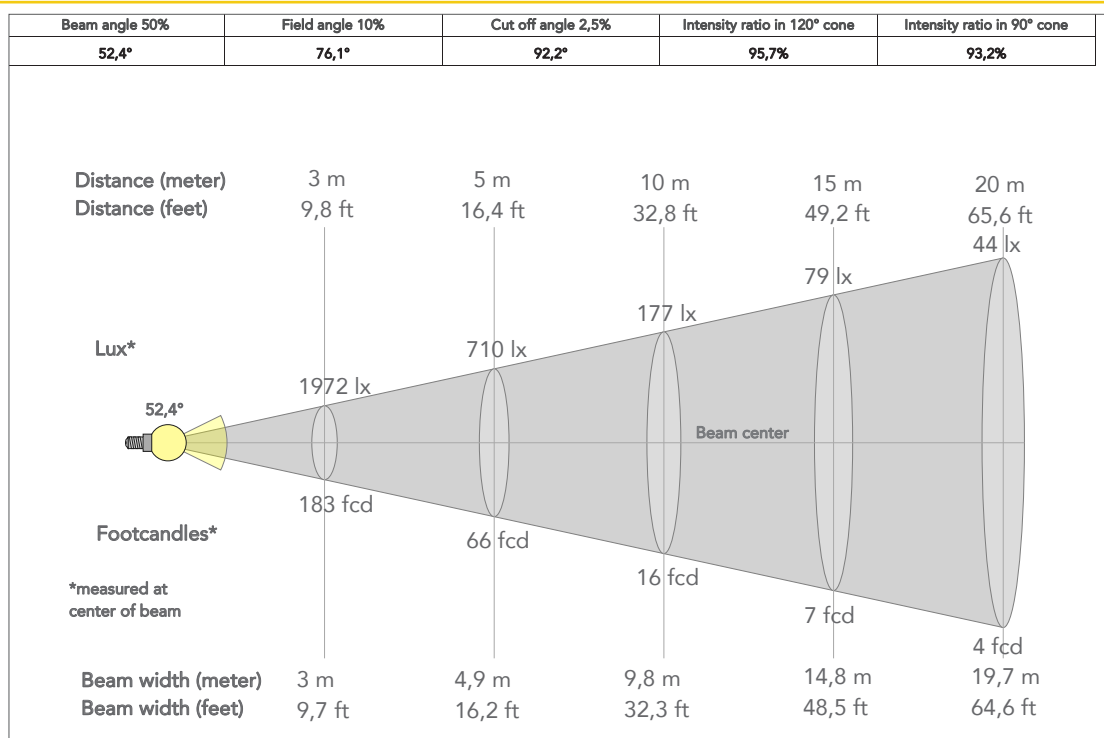
PRESET FULL ON

Beam angle 50%: 17°

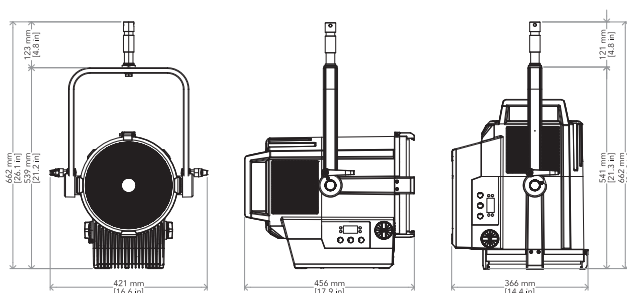


PRESET FULL ON

Beam angle 50%: 52°



TECHICAL DRAWINGS



CERTIFICATIONS / APPROVALS



Visit our website
for specifications and
tech documentations