

Mosaico Jr

70W IP66 zoomable LED image projector with gobo and color wheel

ORDER CODE: **MOSAICOJR**



Mosaico Jr is a compact exterior LED image projector designed for projection of logos, images and textures onto commercial buildings, hotels and city facades. The small size allows for mounting anywhere without any impact on the surrounding environment or architecture. The on board zoom ranges from 14,7° to 45° allowing for an extensive user-flexibility, from projecting crisp and accurate logos to textured projections.

MAIN FEATURES

- IP66 allowing long-lasting installation with minimal maintenance
- Equipped with 14,7° ~ 45° linear zoom system to meet any install indoor or outdoor
- 70W White LED engine delivering 2'600 lumens
- On board rotating gobo wheel, colour wheel and wireless DMX

TECHNICAL SPECIFICATION

LIGHT SOURCE

- Source: 70W White LED
- CCT: 7.000
- Luminous flux: (14.7°) 2'595 lm - (45°) 2'628
- Lux: (14.7°) 1'927 lx - (45°) 294lx @5 m full
- Source life expectancy: > 30.000 hrs (L70B10 @Ta 25° C / 77° F)

OPTICS

- Zoom: 14,7° - 45° motorised linear zoom
- Lens diameter: 63mm / 2.48"
- Lens type: high-quality glass lens optics
- Focus: motorised

COLOUR SYSTEM

- Colour wheel: 7 colour filters
- DYNAMIC EFFECTS
- Rotating gobos: 7 rotating gobos + open, indexing
- Gobo size (BW): gobo Ø 15,8 mm - img Ø 12,5 mm
- Gobo size (Color): gobo Ø 15,8 mm - img Ø 9 mm
- Auto mode: built-in programs with execution speed adjustment

BODY

- Body: aluminium die-casting
- Body colour: RAL 9006
- Other: inspectable cover window for image replacement and maintenance and record scenes and create chases and shows throughout these scenes

CONTROL

- Protocols: DMX512, RDM, CRMX
- Stand Alone: Stand Alone programmer and playback
- DMX channels: 8 / 14channel
- Wireless Control: included, LumenRadio TiMo receiver
- RDM: RDM for remote monitoring and settings

- Display: Graphic User Interface
- Firmware upgrade: yes, via USB - DMX interface (UPBOXPRO/UPBOX1) not included
- Master/Slave: for synchronised operation of more units linked in a chain

ELECTRONICS

- Dimmer: linear 0 ~ 100% electronic dimmer
- Dimmer curves: 4 selectable dimming modes available
- Strobe / shutter: 1 ~ 21 Hz, electronic
- Display battery: self-charging battery backup
- Operating temperature: -20° C / +45° C (-4° F / +113° F)
- LED Control: flicker free frequency with adjustable PWM

ELECTRICAL

- Mains power supply: 100-240V - 50/60Hz
- Max power consumption: 90W
- Standby power: 18 W
- Power factor: >0,92

PHYSICAL

- IP rating: 66 for outdoor installations
- IK rating: 09
- Cooling: active, with IP low noise fan
- Suspension and fixing: bracket for hanging and positioning
- Adaptors: XLR and BARE END 16A adaptors included
- Signal connection: 1,8 m moulded IP signal IN/OUT connectors
- Power connection: 1,8 m moulded IP power IN/OUT connectors
- Dimensions (WxHxD): 247x258x244mm / 9.72"x10.16"x9.61"
- Weight: 10kg / 22.05lbs

CERTIFICATIONS / APPROVALS

- Certifications / Approvals: CE, UKCA, RCM, cTUVus, FCC

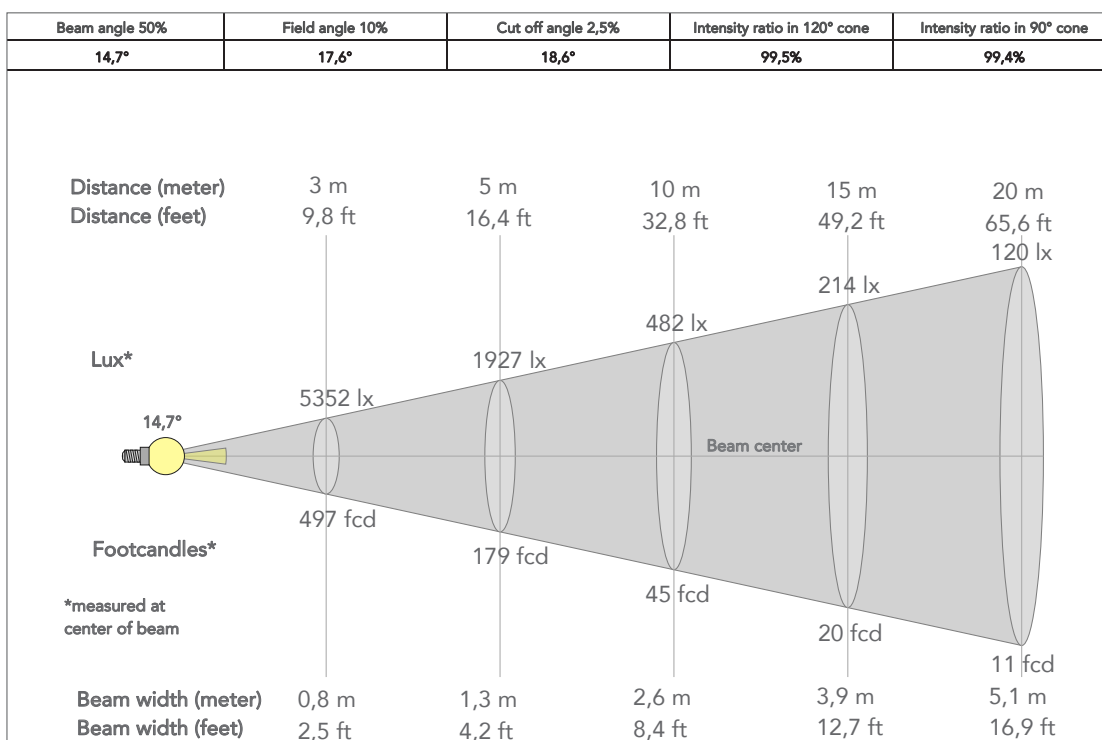
ACCESSORIES & RELATED PRODUCTS

▪ C6002B	Slim aluminum clamp, 200kg loading, 48-51mm tubes, M10 bolt, Black
▪ FCLMOSAICOJR	Flightcase for 8 pcs of MOSAICOJR
▪ RSR0630B	Steel security cable for hanging bodies, inox steel shackle, L=60 cm, black
▪ WSBBF1G5	BlackBox F-1 G5 transmitter, 2,45GHz & 5.2/5,8 GHz, DMX/RDM, 512Ch
▪ WSBBF1G6	BlackBox F-1 G6 transrec, 512ch, 2.45GHz, DMX&RDM,Bluetooth,G3,G4,G4S, G5, CRMX
▪ WSBBR512G5	BlackBox R-512 G5 receiver 512Ch, 2.45GHz & 5.8GHz, DMX/RDM optional

▪ WSBBR512G6	BlackBox R-512 G6 receiver 512Ch, 2.45GHz,DMX&RDM,Bluetooth,G3,G4,G4S,G5,CRMX
▪ MOSUNIBRACKJR	Bracket for MOSAICOJR for wall mounting and suspension on poles
▪ AWEXAC1L03/05/10/20	IP67 power extension cable for outdoor architectural projectors, L.03/05/10/20 m
▪ GBS8400BW	Custom glass grid gobo for MOSAICOJR, used to map perfectly any building surface
▪ AWEXDC1L03/05/10/20	IP67 DMX extension cable for outdoor architectural projectors, L.03/05/10/20 m
▪ UPBOX1U	Firmware uploader kit, USB IN, 3pin XLR DMX OUT, USB OUT

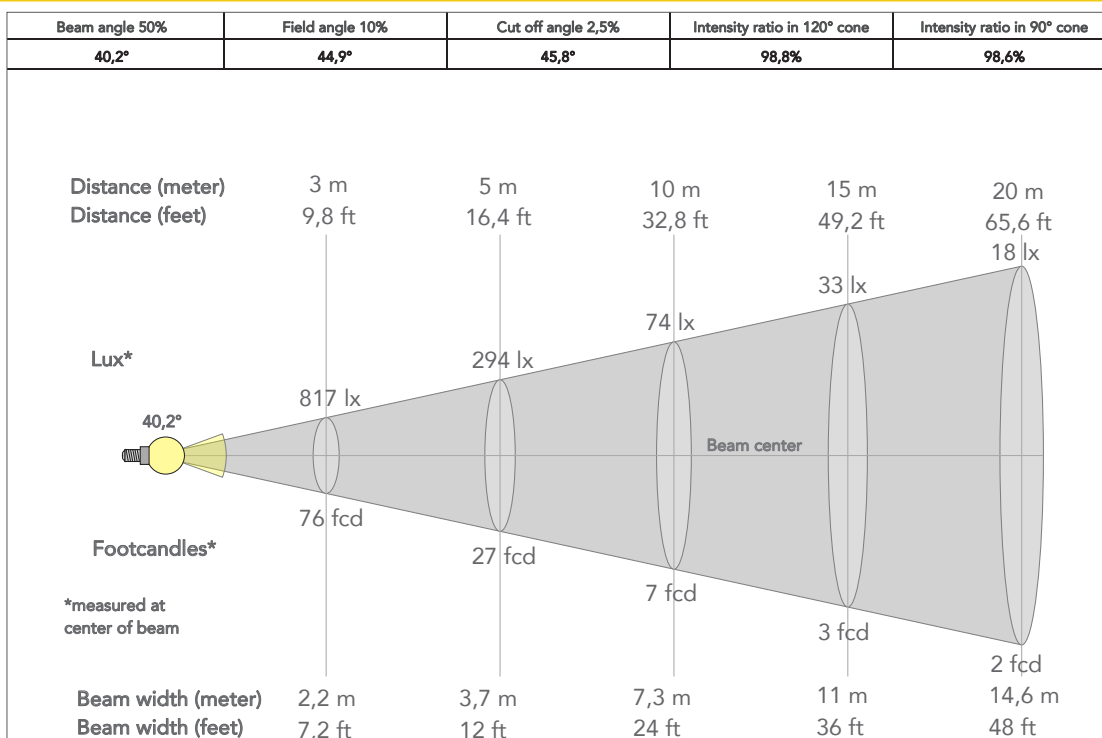
PRESET FULL ON

Beam angle 50%: 14,7°

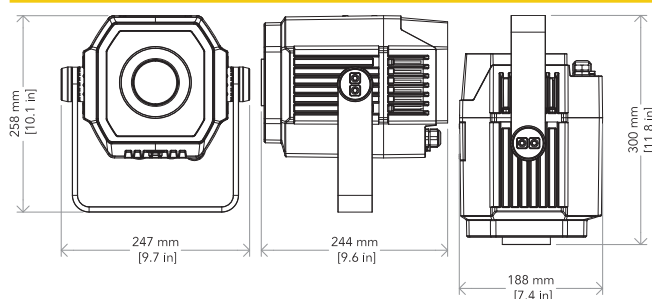


PRESET FULL ON

Beam angle 50%: 45°



TECHICAL DRAWINGS



CERTIFICATIONS / APPROVALS



Conforms to UL STD. 1573
Certified to CSA STD: C22.2 NO. 166

Visit our website
for specifications and
tech documentations

