

# Pixie Zoom

60W IP65 single source full colour zoom PAR

ORDER CODE: **PIXIEZOOM**



**Pixie Zoom** is a single-source LED PAR featuring a 6° - 41,6° linear zoom and a fully homogenised output. Its IP65 housing and solid build allow it to be used in any event from theaters to festivals.

## MAIN FEATURES

- Single 60W RGBW LED source delivers an even beam and full colour spectrum
- Wide linear zoom from 6° to 41,6°
- IP65 rating allowing for flexible use

## TECHNICAL SPECIFICATION

### LIGHT SOURCE

- Source: 60W RGBW Osram LED
- Luminous flux: (6°) 777 lm - (41,6°) 926lm @full
- Lux: (6°) 2'996 lx - (41,6°) 208lx @5 m full
- Source life expectancy: > 50.000 h

### OPTICS

- Zoom: 6° - 41,6° motorised linear zoom
- Lens diameter: 100mm
- Lens type: high-quality glass lens optics

### COLOUR SYSTEM

- Colour mixing: RGBW / FC
- CCT: CCT control through dedicated DMX channel
- White presets: 2.000 K ~ 8.000K
- Colour wheel: virtual colour wheel with macros

### DYNAMIC EFFECTS

- Static mode: selection of static colour
- Manual mode: manual adjustment of colour
- Auto mode: built-in programs with execution speed adjustment

### BODY

- Body: sturdy die-cast aluminium body
- Body colour: black

### CONTROL

- Protocols: DMX512, RDM
- DMX channels: 5 / 7 / 11channel
- RDM: RDM for remote monitoring and settings
- Display: black OLED touch display
- Firmware upgrade: yes, via USB - DMX interface (UPBOX1) not included
- Master/Slave: for synchronised operation of more units linked in a chain

### ELECTRONICS

- Dimmer: linear 0 ~ 100% electronic dimmer
- Dimmer curves: 4 selectable dimming modes available
- Strobe / shutter: 1 - 30 Hz, electronic
- Display battery: self-charging battery backup
- Operating temperature: -20° ~ +45°
- LED Control: flicker free frequency with adjustable PWM
- Selectable PWM: 600 ~ 25.000 Hz

### ELECTRICAL

- Mains power supply: 100-240V - 50/60Hz
- Max power consumption: 85W
- Output (at 230V): 22 units on a single power line
- Power factor: > 0,90

### PHYSICAL

- IP rating: 65 for temporary outdoor application, not for fixed installation
- Cooling: pressure and temperature balance through GORE membrane vents
- Suspension and fixing: double hanging bracket suitable for safe hanging and for floor positioning
- Signal connection: Seetronic XLR 5p IN/OUT connectors
- Power connection: Seetronic powerCON waterproof IN/OUT connectors
- Dimensions (WxHxD): 259x347x265mm
- Weight: 5,5kg

### CERTIFICATIONS / APPROVALS

- Certifications / Approvals: CE, UKCA, RCM

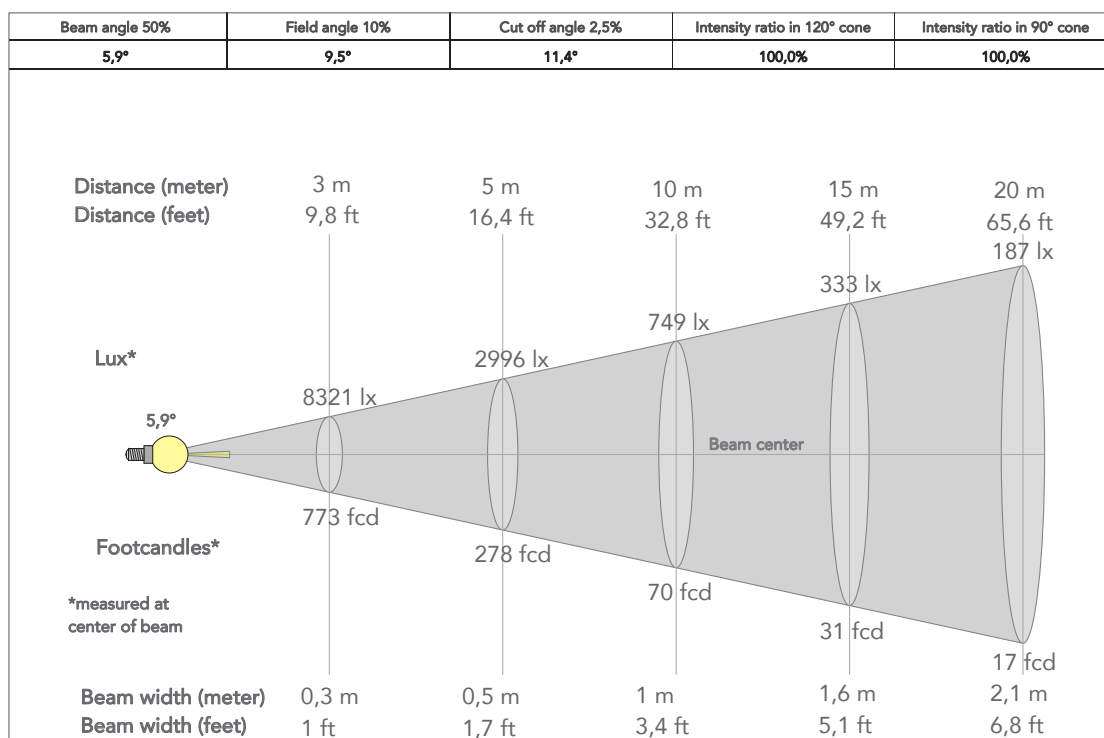
## ACCESSORIES & RELATED PRODUCTS

- |               |  |
|---------------|--|
| ▪ 9313FXWL03  | Ass. 3x2.5mm TH07 cable, 16A 3p 230V CEE plug, SETSAC3FX socket, L.3 m |
| ▪ 9333FXWL03  | Ass. 3x2.5mm TH07 cable, SHUKO plug, SETSAC3FX socket, L.3m            |
| ▪ 938225L03   | 3x2.5mm TH07 Cable, 16A SETSAC3MX, 16A SETSAC3FX, L. 3m                |
| ▪ C6002B      | Slim aluminum clamp, 200kg loading, 48-51mm tubes, M10 bolt, Black     |
| ▪ INF53415L03 | Dmx cable HC5340. SETMC5MXXB XLR 5p->SETMC5FXXB XLR (f) 5p L.3m        |

- |                |   |
|----------------|---|
| ▪ PIXIEZOOMBD  | Barn door 4 directional flaps to adjust the light beam, f. frame included   |
| ▪ RSR0630B     | Steel security cable for hanging bodies, inox steel shackle, L=60 cm, black |
| ▪ FCLPIXIEZOOM | Flightcase for 8 PIXIEZOOM  |
| ▪ UPBOX1U      | Firmware uploader kit, USB IN, 3pin XLR DMX OUT, USB OUT                    |

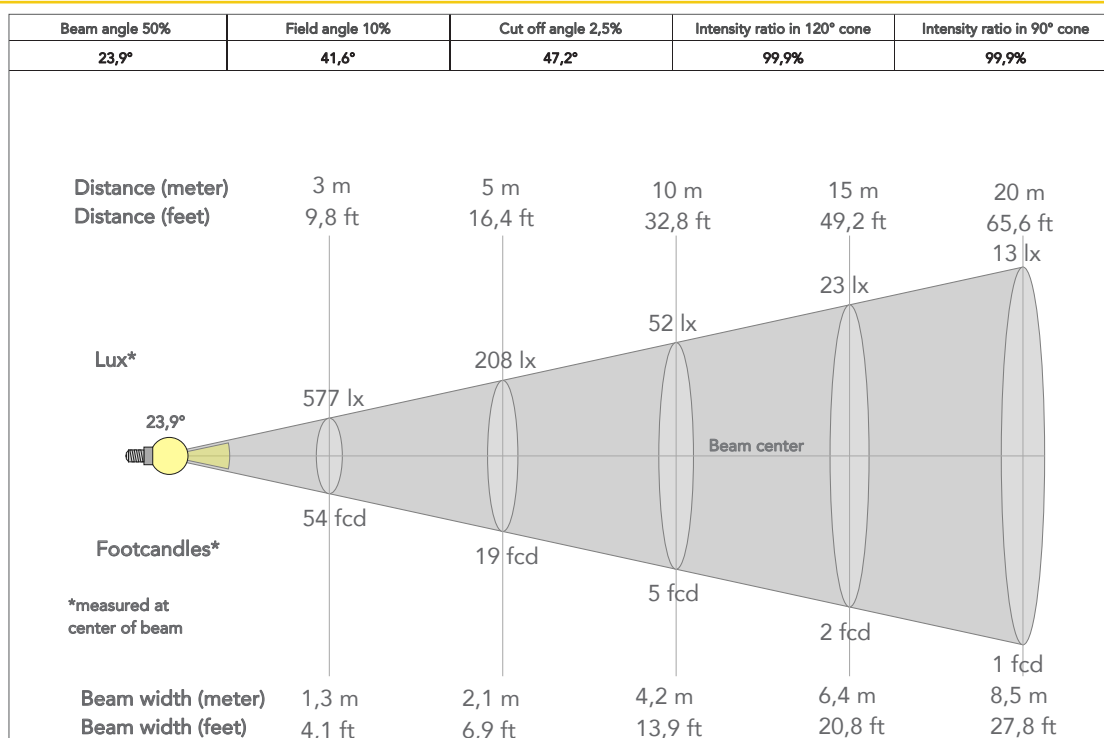
## PRESET FULL ON

Beam angle 6°

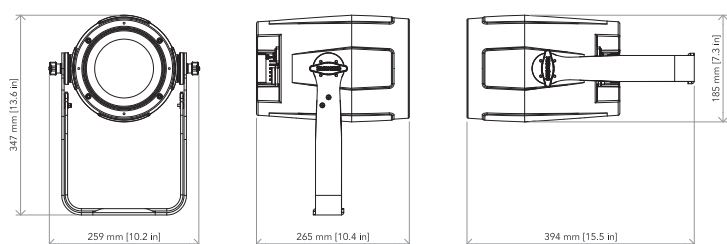


## PRESET FULL ON

Beam angle 41,6°



## TECHICAL DRAWINGS



## CERTIFICATIONS / APPROVALS



Visit our website  
for specifications and  
tech documentations