

Stark 400

7x40W high power LED wash/beam light with pixel mapping

ORDER CODE: **STARK400**



Stark 400 is a new generation, high-output LED wash light designed to bring the workhorse LED wash light right up-to-date. Featuring 7 of Osrams new 40 W RGBW Ostar LEDs it delivers a massive output for its size with a huge colour range and an extensive toolkit of effects.

MAIN FEATURES

- Massive 4,4° to 36° linear zoom range from beam to wash
- Individual control of calibrated pixels with on-board FX generator for fast and precise effects
- Liquid cooling system for efficient cooling with virtually no noise

SPECIFICHE TECNICHE

LIGHT SOURCE

- Source: 7x40W RGBW Osram Ostar LEDs
- CCT: 2.000 K - 10.000K
- Luminous flux: (4°) 1'944 lm - (36°) 2'700lm @full
- Lux: (4°) 15'584 lm - (36°) 848lx @5 m full
- Source life expectancy: > 50.000 h

OPTICS

- Zoom: 4° - 36° motorised linear zoom
- Lens type: high-quality glass lens optics

COLOUR SYSTEM

- Colour mixing: RGBW / FC
- CCT: CCT control through dedicated DMX channel
- White presets: 2.000 K ~ 10.000K
- Colour wheel: virtual colour wheel with macros
- Macros: several pre-built pixel macros with adjustable speed

DYNAMIC EFFECTS

- Pixel patterns: pre-programmed dynamic and static patterns
- FX generator: adjustable foreground/background colour, index, speed, direction

BODY

- Pan angle: 540° / 630°
- Tilt angle: 233°
- Pan/Tilt resolution: 16-bit
- Feedback: automatic repositioning after accidental movement
- Body: aluminium structure with high-resistance polycarbonate cover
- Body colour: black

CONTROL

- Protocols: DMX512, RDM, Art-Net, W-DMX
- DMX channels: 16 / 26 / 27 / 32 / 50channel
- Pixel control: pixel2pixel control
- Wireless Control: included, wireless solution receiver

ACCESSORIES & RELATED PRODUCTS

- 9513FXWL03 Ass. 3x2.5mm TH07 cable, 16A 3p 230V CEE plug, MENAC3FXW socket, L.3 m
- 9533FXWL03 Ass. 3x2.5mm TH07 cable, SHUKO plug, MENAC3FXW socket, L.3m
- 958225L03 3x2.5mm TH07 Cable, 16A 3p PwCon MXW, 16A 3p PwCon FXW, L. 3m
- C6016B Quick-trigger slim clamp, 250Kg load, 48-51mm tubes, M10 bolt incl, Black
- OS24 Quick-lock omega bracket.
- RSR0630B Steel security cable for hanging bodies, inox steel shackle, L=60 cm, black
- TOUR53415L03 Dmx cable HC5340. CANC5MXX XLR 5p->CANC5FXX XLR (f) 5p, L.3m
- WSBBF1G5 BlackBox F-1 G5 transmitter, 2,45GHz & 5.2/5,8 GHz, DMX/RDM, 512Ch

- RDM: RDM for remote monitoring and settings
- Display: LCD high resolution colour display with autoflip
- Firmware upgrade: yes, via USB - DMX interface (UPBOX2) not included
- Hibernation: power safe mode when lost DMX
- Master/Slave: for synchronised operation of more units linked in a chain

ELECTRONICS

- Dimmer: linear 0 ~ 100% electronic dimmer
- Dimmer curves: selectable dimming modes available
- Strobe / shutter: 1 - 30 Hz, electronic
- Display battery: self-charging battery backup
- Operating temperature: -10° ~ +45°
- LED Control: flicker free operation

ELECTRICAL

- Mains power supply: 100-240V - 50/60Hz
- Max power consumption: 245W

PHYSICAL

- IP rating: 20
- Cooling: combination of heat pipe cooling system and low noise fan
- Suspension and fixing: any position with quick-lock omega brackets
- Signal connection: Amphenol XLR 5p IN/OUT connectors
- Data connection: Art-Net RJ45 IN/OUT
- Power connection: Neutrik powerCON TRUE1 IN/OUT connectors
- Dimensions (WxHxD): 338x452x239mm
- Weight: 11kg

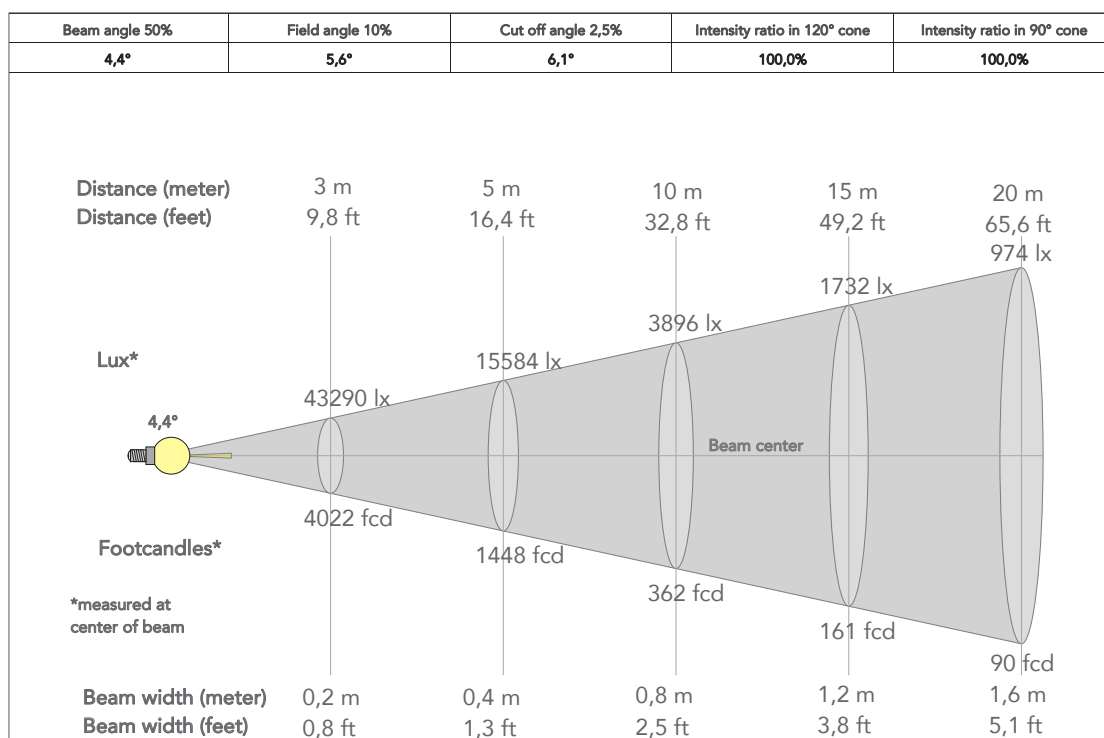
CERTIFICATIONS / APPROVALS

- Certifications / Approvals: CE, UKCA, RCM, cTUVus, FCC

- WSBBF1G6 BlackBox F-1 G6 transrec, 512ch, 2.45GHz, DMX&RDM,Bluetooth,G3,G4,G4S, G5, CRMX
- WSBBR512G5 BlackBox R-512 G5 receiver 512Ch, 2.45GHz & 5.8GHz, DMX/RDM optional
- WSBBR512G6 BlackBox R-512 G6 receiver 512Ch, 2.45GHz,DMX&RDM,Bluetooth,G3,G4,G4S,G5,CRMX
- WR24ANG5 WIRELESS SOLUTION, nano RX DMX 3.3V/5V-18V MCX
- WSA40501 WDMX, antenna 2.4Ghz 2dBi omnidirectional, folding, SMA-male, indoor
- FCL40019 Flight case for 4x STARK400 or DIAMOND19
- FSHLW01 1U Foam shell compatible with DIAMOND19, STARK400
- UPBOX2 Firmware uploader kit, USB IN, 3-pin XLR DMX OUT

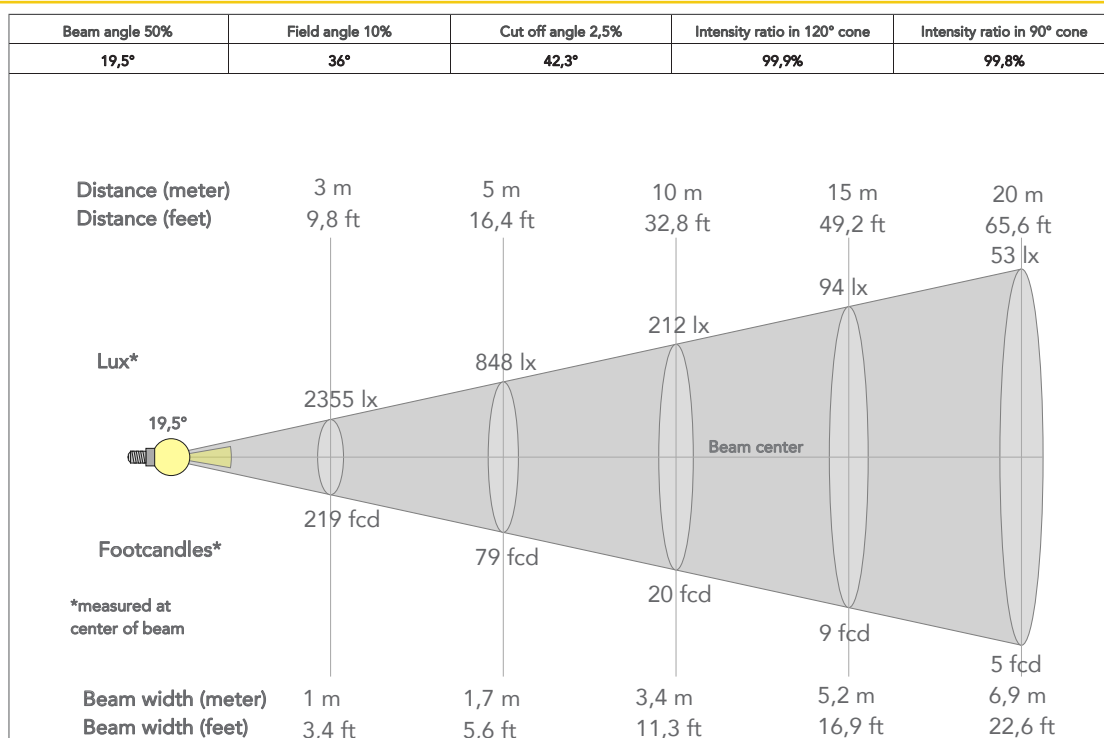
PRESET FULL ON

Beam angle 50%: 4,4°

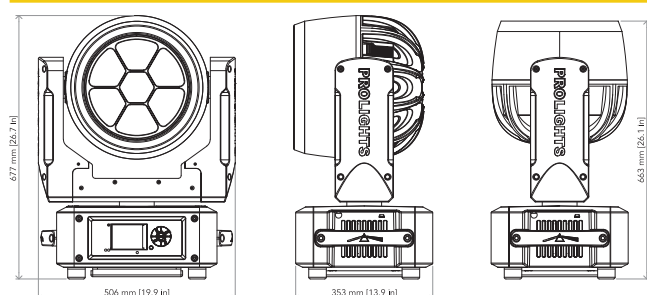


PRESET FULL ON

Beam angle 50%: 36°



TECHNICAL DRAWINGS



CERTIFICATIONS / APPROVALS



Conforms to UL STD. 1573
Certified to CSA STD: C22.2 NO. 166

Visit our website
for specifications and
tech documentations

