

# Ra 3000Profile

1.000W high-precision LED moving profile light

ORDER CODE: **RA3000PROFILE**



## TECHNICAL SPECIFICATION

### LIGHT SOURCE

- Source: 1.000W White LED
- CCT: 6.000K
- Luminous flux: 18'576lm
- Lux: (6°) 68'027 lx (50°) 1'543lx @5 m
- CRI: > 93
- R9: 70
- Other: TLCI: 94; TM30-15RF: 89; TM30RG: 97
- Source life expectancy: > 30.000 hrs (L70B10 @Ta 25° C / 77° F)

### OPTICS

- Zoom: 6° - 50° motorised linear zoom
- Lens diameter: 180mm

### COLOUR SYSTEM

- Colour mixing: linear CMY
- CCT: linear CTO correction 2.700 K ~ 6.000 K
- Colour wheel: 6 colour filters

### DYNAMIC EFFECTS

- Shutter system: 4 single blades: + / - 35°, complete system: + / - 45°
- Animation wheel: animation wheel with CW and CCW rotation
- Rotating gobos: 6 rotating gobos + open, interchangeable, indexing
- Gobo size: outer: 31,6 mm - image: 26 mm - thickness: 1,1 mm
- FX generator: shutter macros with adjustable speed
- Circular prism: 4f with bi-directional rotation, indexing
- Frost: dual frost filter system, 1° soft-edge frost gobo, 5° frost wash, with linear 0 - 100% frost filter
- Iris: 5 - 100% motorised iris

### BODY

- Pan angle: 540°
- Tilt angle: 270°
- Pan/Tilt resolution: 8 / 16-bit
- Feedback: automatic repositioning after accidental movement

## ACCESSORIES & RELATED PRODUCTS

- |                |  |
|----------------|--|
| ▪ LRLUNA       | Single Universe DMX transceiver with Bluetooth                         |
| ▪ OS24D13      | Quick-lock omega bracket, M12 hole                                     |
| ▪ OS24         | Quick-lock omega bracket, M10 hole                                     |
| ▪ TOUR53415L03 | Dmx cable HC5340. CANC5MXX XLR 5p->CANC5FXX XLR (f) 5p, L.3m           |
| ▪ 958225L03    | 3x2.5mm TH07 Cable, 16A 3p PwCon MXW, 16A 3p PwCon FXW, L. 3m          |
| ▪ 9513FXWL03   | Ass. 3x2.5mm TH07 cable, 16A 3p 230V CEE plug, MENAC3FXW socket, L.3 m |

**Ra 3000Profile** combines solid-state technology in every single detail and it has been specifically engineered to be not only a high-quality bright light but also silent. **Ra 3000Profile** is able to provide a real 25'000 lumen output with unprecedented beam evenness. The 6.000 K LED engine has been custom designed to make the **Ra 3000Profile** hit a CRI of 90, TLCI of 92, high R9 and TM30 making all skin tones and colours come to life on stage or in front of a camera. The **Ra 3000Profile**'s CMY system delivers beautiful pastels, stunning saturated colours, powerful primaries, one colour wheel provides split colours, and linear CTO allows the **Ra 3000Profile** to blend in with traditional sources. Packed with a full feature set, composed of a gobo wheel, animation wheel, iris, prism and dual linear frost. High-precision 4 blade shuttering system can be overlaid to provide endless combinations. The 19 element optics of the **Ra 3000Profile** are precision engineered for a perfect zoom, ideal edges and maximum efficiency. The **Ra 3000Profile** is silent, bright, flexible and precise.

## MAIN FEATURES

- 1.000W LED engine with 6.000 K CT featuring high CRI, TLCI, R9 and TM30.
- 25'000 lumen fixture output with flat-field projection and silent operation.
- Equipped with both adjustable framing shutters and an animation wheel.

- Body: flame retardant PC
- Body colour: black

### CONTROL

- Protocols: DMX512, RDM, Art-Net, sACN, W-DMX
- DMX channels: 38 / 39 / 40 / 41channel
- Wireless Control: included, wireless solution receiver
- RDM: RDM for remote monitoring and settings
- Display: Graphic User Interface
- Firmware upgrade: yes, via USB - DMX interface (UPBOX1) not included

### ELECTRONICS

- Dimmer: linear 0 ~ 100% electronic dimmer
- Strobe / shutter: 1 - 30 Hz, electronic
- Display battery: self-charging battery backup
- Operating temperature: -10° ~ +45°
- LED Control: flicker free operation

### ELECTRICAL

- Mains power supply: 100-240V - 50/60Hz
- Max power consumption: 1.350W
- Max power consumption (at 120V): 1.370W
- Power factor: (120 W) 1,0 - (230 W) 0,98

### PHYSICAL

- IP rating: 20
- Cooling: combination of heat pipe cooling system and low noise fan
- Suspension and fixing: fast quick lock Omega bracket
- Pan / tilt lock: for transportation and maintenance
- Signal connection: Amphenol XLR 3p + 5p IN/OUT connectors
- Data connection: Art-Net RJ45 IN/OUT
- Power connection: Neutrik powerCON TRUE1 IN connector
- Dimensions (WxHxD): 535x913x403mm
- Weight: 57kg

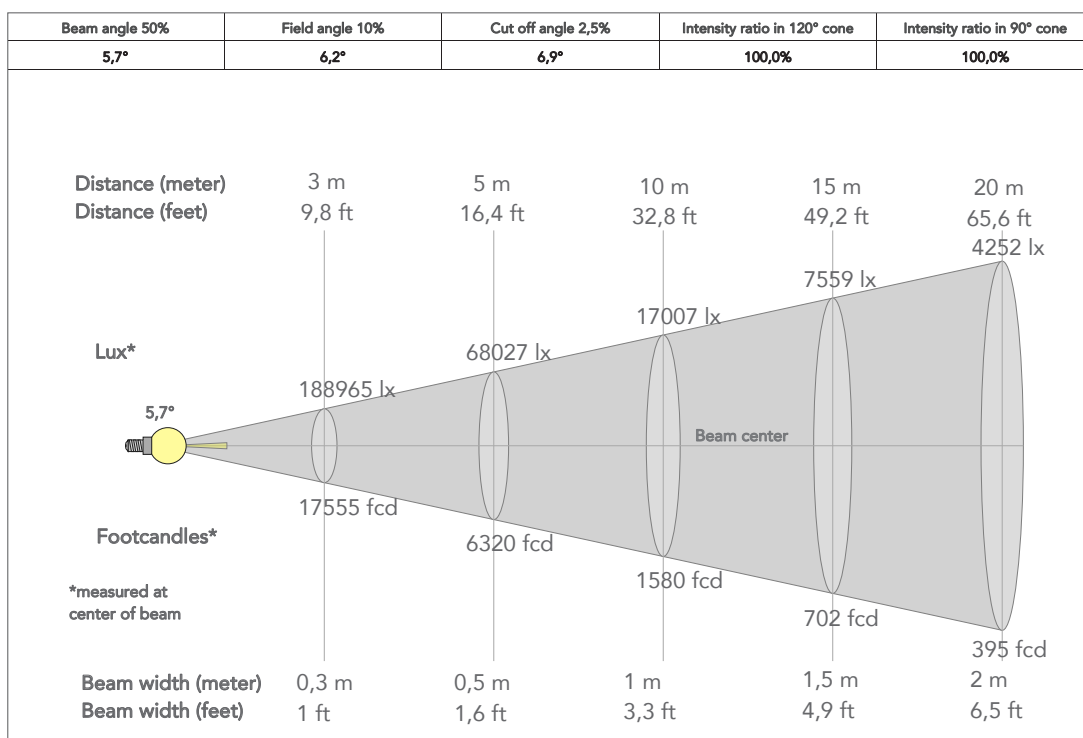
## CERTIFICATIONS / APPROVALS

- Certifications / Approvals: CE, UKCA, RCM

- |              |   |
|--------------|---|
| ▪ 9533FXWL03 | Ass. 3x2.5mm TH07 cable, SHUKO plug, MENAC3FXW socket, L.3m                 |
| ▪ RSR0670B   | Steel security cable for hanging bodies, inox steel shackle, L=60 cm, black |
| ▪ C6016B     | Quick-trigger slim clamp, 250Kg load, 48-51mm tubes, M10 bolt incl, Black   |
| ▪ FCLRA3000  | Flight case for 1 RA3000PROFILE   |
| ▪ UPBOX1UP5  | Firmware uploader kit, USB IN, 5pin XLR DMX OUT, USB OUT                    |

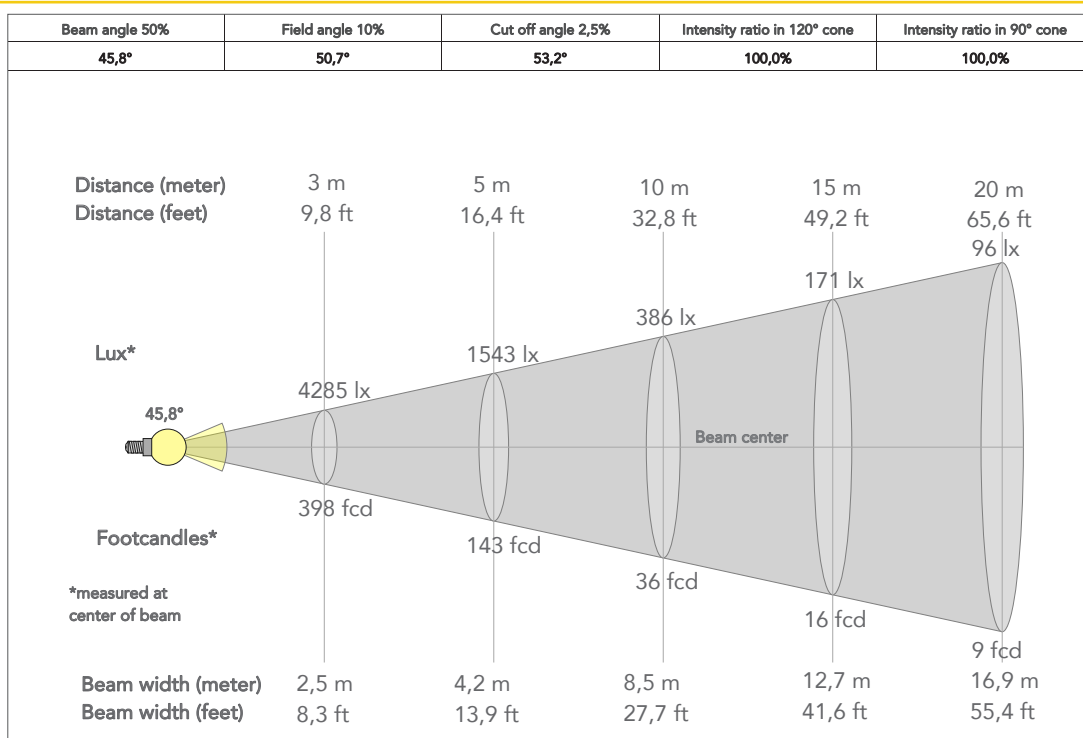
## PRESET FULL ON

Beam angle 50%: 6°

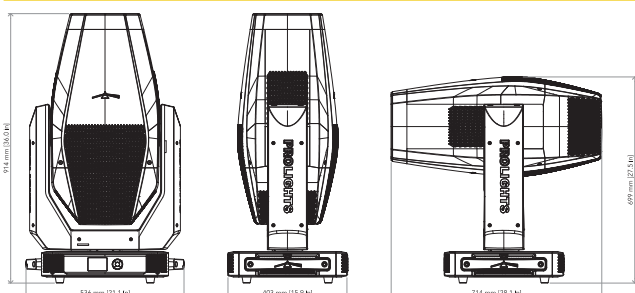


## PRESET FULL ON

Beam angle 50%: 50°



## TECHNICAL DRAWINGS



## CERTIFICATIONS / APPROVALS



Visit our website  
for specifications and  
tech documentations