

OmegaPix 39T

3,9 mm pixel pitch outdoor rental LED screen

ORDER CODE: OMEGAX39T



OmegaPix 39T is a revolutionary outdoor 3,9 mm LED screen rental panel. Specially designed to offer advanced mechanical features, more creative configurations and enhanced video image quality.

MAIN FEATURES

- 3,9 mm pixel pitch outdoor rental LED screen
- Seamless 90° angles
- Curve configurations, concave and convex
- Fly bar hanging/stacking
- New Novastar A8s with 18bit+, Clearview and image rotation

TECHNICAL SPECIFICATION

VIDEO

- Driver chip type: MBI 5151
- LED source: Nationstar SMD1921 black frame
- Pixel pitch: 3,9mm
- Panel resolution: 128x128pixels
- Module resolution: 64x64pixels
- Luminous flux: 5.000nit
- Contrast: 3.000:1
- Grayscale: 18 bit
- Refresh rate \geq : 3.840Hz
- Drive Mode: 1/8 scan, constan current
- Vertical viewing angle: 120°
- Horizontal viewing angle: 140°
- LED density: 65.536LED/sqm
- Dead Pixel Ratio: <0,002
- LED avg life span: 100.000

ELECTRICAL

- Power input/output: IPKON Seetronic IN/OUT
- Power supply: AC 110/230 V 50/60 Hz
- Max power consumption (panel): 210W
- Avg power consumption (panel): 70W
- Max power consumption (sqm): 840W
- Avg power consumption (sqm): 280W
- Standby power consumption (pannello): 16W
- Max rated current/panel:: AC 220 V / 0,91 A
- Working temperature: -20°C / +50°C
- Working humidity: 10~90 RH%

CONTROL

- Receiving card type: A8S
- Other controllers type: rotation, 18bit+, clearview, mapping, firmware copy, RCFGX restore, calibration restore
- Control protocol: Novastar
- Signal input: IP data Seetronic IN
- Signal output: IP data Seetronic OUT

MECHANICS

- Magnetic LED modules: not available
- Other specifics: curve configurations, climbable, rear panel swapping, corner protection for transport, velcro strips for gapless mounting
- Module size (WxH): 250x250mm
- Panel size(WxHxD): 500x500x90,6mm
- Vertical hanging system: built-in aliscap clamp support
- Cooling: natural cooling of the peculiar chassis and to absence of fans
- Connection: seamless locking system
- Curvability: concave 2°, 5°, 10° - convex 2°, 5°
- Body: die-cast aluminium housing
- Color: black
- IP rating: IP65 (front and rear)
- Panel weight: 9kg
- Weight per square meter: 36kg
- Hanging Panel Quantity \leq : 20
- Compliant Standard: CE, EMC, UL

ACCESSORIES & RELATED PRODUCTS

▪ OMEGAX39C45LT	45° L outdoor LED mod, SMD1921 BB, p.3,9mm, 50x50cm, 128x128pix, 5.000 nit, 9 kg	▪ OXCJ88	Cabinet curve plate concave, 2°
▪ OMEGAX39C45RT	45° R outdoor LED mod, SMD1921 BB, p.3,9mm, 50x50cm, 128x128pix, 5.000 nit, 9 kg	▪ OXCJ85	Cabinet curve plate concave, 5°
▪ OXFCM8039	Flightcase for 8 pcs OMEGAX39T LED-display, 1.200x600x806 mm	▪ OXCJ80	Cabinet curve plate concave, 10°
▪ OXDCL01	Data cable for OMEGAX LED display series assembled with RJ45, L.1 m	▪ OXCJ92	Cabinet curve plate convex, 2°
▪ OXACL01	Power cable for OMEGAX and DELTAX LED display series L.1 m	▪ OXCJ95	Cabinet curve plate convex, 5°
▪ OXHGB01	Fly bar and GroundBar for OMEGAX26B and OMEGAX39T systems, 1 column	▪ OXCJB	Ground system back horizontal support for OMEGAPIX series LED wall
▪ OXHGB02	Fly bar and GroundBar for OMEGAX26B and OMEGAX39T systems, 2 column	▪ OXFCS100	Rigging/ground-stack structure flightcase OMEGAX-DELTAX LED-display, 100cm
▪ OXBS21PLUS	Back wide vertical support 2 in 1	▪ OXFCS200	Rigging/ground-stack structure flightcase OMEGAX-DELTAX LED-display, 200cm
▪ OXBS41PLUS	Back wide vertical support 4 in 1	▪ OXFCS	Spare part flightcase for OMEGAX-DELTAX series LED-display
▪ OXBS21	Back narrow vertical support 2 in 1	▪ NOVAMCTRLR5	Video processor sender, res. 3840x1080, 8xRJ45 out, 4.6 kg
▪ OXBS41	Back narrow vertical support 4 in 1	▪ OXXJ	Metal joint used to connect 4 pcs OMEGAX26B, OMEGAX39B or OMEGAX39T, M10 hole
▪ OXBSC	Back support connectors	▪ OMEGAXDOLLY	Dolly for transport 24 cabinets OMEGAX39T (6 layers by 4 cabinets)

ACCESSORIES



OMEGAX39C45RT



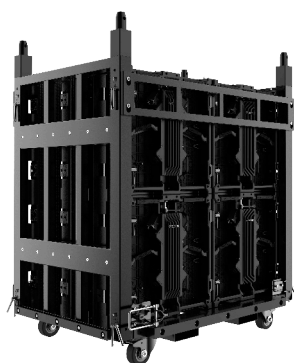
OMEGAX39C45LT



OXFCM8039



OXFCSP



OMEGAXDOLLY



OXHGB01



OXHGB02



OXHGB01C45L/R

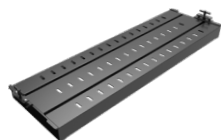


OXCJ80°/85°/88°

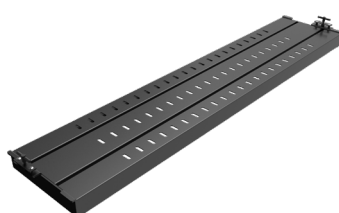
OXCJ90°/92°



OXBSC



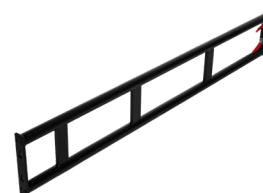
OXGBMP02



OXGBMP03



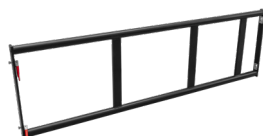
OXBS21



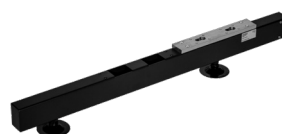
OXBS41



OXBS21PLUS



OXBS41PLUS

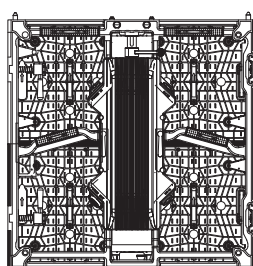
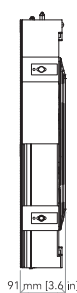
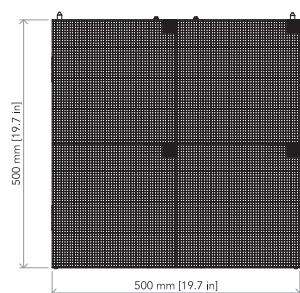


OXCJB



OXCJBUPG

TECHNICAL DRAWINGS



For more product
info and downloads
visit our website

